

RESEARCH ARTICLE

Open Access

Impact of psychosocial factors on cardiovascular morbimortality: a prospective cohort study

Cília Mejía-Lancheros¹, Ramón Estruch^{2,3,4}, Miguel-Angel Martínez-González^{3,5}, Jordi Salas-Salvadó^{2,3,6}, Olga Castañer^{2,7}, Dolores Corella^{2,3,8}, Fernando Arós^{3,9}, Enrique Gómez-Gracia^{3,10}, Miquel Fiol^{2,11}, José Lapetra^{2,12}, Lluís Serra-Majem^{3,13}, Xavier Pintó^{3,14}, Emilio Ros^{2,15}, Javier Díez-Espino¹⁶, Josep Basora^{2,3,17}, José-V Sorlí^{2,3,8,18}, Rosa-Maria Lamuela-Raventós^{2,3,19}, Valentina Ruiz-Gutiérrez^{2,3,20}, and Miguel-Ángel Muñoz^{1,21,22*} on behalf of the PREDIMED Study Investigators

Abstract

Background: Whilst it is well known that psychosocial determinants may contribute to cardiovascular diseases (CVD), data from specific groups are scarce. The present study aims to determine the contribution of psychosocial determinants in increasing the risk of cardiovascular events (myocardial infarction and stroke), and death from CVD, in a high risk adult population.

Methods: Longitudinal prospective study of 7263 patients (57.5% women), mean age 67.0 (SD 6.2) free from CVD but at high risk, with a median follow-up of 4.8 years (from October 2003 to December 2010). The Hazard Ratios (HRs) of cardiovascular events (myocardial infarction, stroke, and death from cardiovascular causes) related to educational attainment, diagnosed depression (based on medical records), and low social support (number of people living in the household) were estimated by multivariate Cox regression models.

Results: Stroke incidence was associated with low educational level in the whole population (HR: 1.83, 95% CI: 1.09–3.09), and especially in men (HR: 2.11, 95% CI 1.09–4.06). Myocardial infarction and CVD mortality were not associated with any of the psychosocial factors considered.

Conclusion: Adults with low educational level had a higher risk of stroke. Depression and low social support were not associated with CVD incidence.

Trial registration: Clinical trial registration information unique identifier: ISRCTN35739639.

Keywords: Stroke, Acute myocardial infarction, Cardiovascular death, Educational level, Socioeconomic position, Depression, Social support, Health inequalities

Background

Cardiovascular disease (CVD) remains the leading cause of mortality worldwide, and in most developed countries is the major origin of disability among elderly people. In 2008, heart attacks and strokes were responsible for 7.3 and 6.2 million deaths, respectively [1]. Its incidence has been strongly related with classic risk factors (hypertension, dyslipidemia, and type 2 diabetes), and poor lifestyles (smoking, physical inactivity, and unhealthy diet)

[2,3]. In recent decades, inadequate psychosocial and living conditions have also been found to be linked to CVD [4,5]. Individual conditions such as low socioeconomic status, weak social support, depression, and residing in disadvantaged neighborhoods may contribute to socioeconomic inequalities in cardiovascular health [4-9]. Their roles, however, are not yet entirely clear [8,9] and, in some contexts, not taken into consideration. In Spain, where socioeconomic health disparity is not as pronounced as in some other European countries [10], and CVD incidence is one of the lowest in the world [1,11,12], there are few studies which have evaluated the effect of psycho-social factors [13].

* Correspondence: mamunoz.bcn.ics@gencat.cat

¹Department of Paediatrics, Obstetrics, Gynaecology and Preventive Medicine, Universitat Autònoma de Barcelona, Bellaterra, Spain

²¹Institut Català de la Salut, Barcelona, Spain

Full list of author information is available at the end of the article

Study aims

The present study aimed at determining whether adverse psychosocial conditions such as lower educational level, depression, and weak social support contribute to increasing the risk of cardiovascular events (myocardial infarction and stroke) and death from CVD in an adult population at high cardiovascular risk.

Methods

Study design and population

This is a longitudinal, prospective study embedded within the PREDIMED Study (Prevention with Mediterranean diet) carried out from October 2003 to December 2010, in Spain. Details of PREDIMED study enrollment, design, population, methods, and main results have been described elsewhere [14]. For the purpose of this article, we analyzed 7263 participants (women and men) aged 55–80 years old, at high cardiovascular risk, but free from cardiovascular disease at baseline (97.5% of PREDIMED participants), with complete, available data concerning psychosocial risk factors.

Inclusion criteria

participants had to have at least one of the following two conditions: a) Medical diagnosis of type 2 diabetes or receiving insulin or oral hypoglycemic drugs; or having fasting glucose >126 mg/dl or presented casual glucose >200 mg/dl with polyuria, polydipsia, or unexplained weight loss; or glucose > 200 mg/dl in two measurements after an oral glucose tolerance test. b) At least three of the following risk factors: smoking (>1 cig/day during the last month); hypertension (systolic blood pressure >=140 mm Hg or diastolic blood pressure >=90 mmHg or under antihypertensive medication); elevated low-density lipoprotein cholesterol levels (>= 160 mg/dl); low high-density lipoprotein cholesterol levels (<= 40 mg/dl); overweight (body mass index >= 25 kg/m²); or a family history of premature coronary heart disease (CHD) (definite myocardial infarction or sudden death before 55 years in father or male 1st-degree relative, or before 65 years in mother or female 1st-degree relative). If the HDL-cholesterol level was >=60 mg/dL, one risk factor was subtracted.

Exclusion criteria

Participants with any of the following were excluded: documented history of previous cardiovascular disease or severe medical conditions (digestive disease with fat intolerance, advanced malignancy, major neurological, psychiatric or endocrine disease); immunodeficiency; illegal drug use; problematic alcohol intake (chronic alcoholism or total daily alcohol intake >80 g/d); body mass index > 40 kg/m²; difficulties or major inconvenience to change dietary habits; impossibility of following a Mediterranean-type

diet or understanding the recommendations of the protocol; and lack of autonomy.

Data were collected from medical records, clinical evaluations, and face to face interviews. Validated questionnaires were administered in order to obtain information on nutritional habits [15,16]. Blood samples for laboratory tests were gathered. All participants gave written informed consent. The study was approved by the Institutional Review Board of Hospital Clinic (Barcelona, Spain), and registered in the Current Controlled Trials (number: ISRCTN35739639, <http://www.controlled-trials.com/ISRCTN35739639>).

Study variables

Psychosocial conditions

Educational level: Educational level was used as a proxy of socioeconomic position (SP) since it is considered a strong determinant of social status that may condition employment and income opportunities [17]. For the purpose of the study, educational attainment in the bivariate analysis was classified into three groups: high education (secondary or university studies), primary education (completed primary school), and less than primary education. In the multivariate analysis, educational level was divided into two groups: high education (secondary or university studies) and low education (up to primary school).

Social support: Social support in the household was considered to be low when participants were living alone. Living alone has been reported as a valid proxy to evaluate social support, and has been found to be an independent social risk factor for adverse cardiovascular event outcome [18].

Depression: Information regarding history of diagnosis of depression was self-reported by participants during a face to face interview at the inclusion visit and further confirmed in clinical records. In Spain, the diagnosis of depression is carried out by both psychiatrists and GPs following the American Psychological Association clinical criteria (DSM-IV) or other mental health scales (e.g. the Beck Depression Inventory).

Other co-variables: socio-demographic variables: Age (years) and gender. Smoking status: Never smoked, former smoker, and current smoker. Alcohol intake: High alcohol consumption (Alcohol consumption more than 20 gr. daily in men and 10 gr. daily in women). Body mass index (BMI): Expressed as weight in kilograms divided by height in meters squared (Kg/m²). Cardiovascular risk factors: Hypertension (Medical diagnosis of hypertension or receiving at least one of the following antihypertensive drugs: angiotensin-converting-enzyme inhibitor (ACE inhibitors), diuretics, calcium channel blockers, angiotensin II receptor antagonists, β -blockers, α -blockers, or other antihypertensive drugs); Diabetes (medical diagnosis of Type 2 diabetes or receiving insulin and/or oral hypoglycemic drugs); Dyslipidemia (medical diagnosis of dyslipidemia or

receiving lipid lowering therapy); Family history of premature coronary heart disease (CHD). Mediterranean dietary intervention: (i) Low fat Mediterranean diet (control diet): dietary recommendation which highlighted the consumption of lean meats, low-fat dairy products, cereals, potatoes, pasta, rice, fruit and vegetables. The use of olive oil for cooking and dressing and consumption of nuts, fatty meats, sausages, and fatty fish were discouraged. (ii) Mediterranean diet enriched with extra-virgin olive oil (EVOO): positive dietary recommendation about the Mediterranean diet pattern emphasizing the abundant use of olive oil for cooking and dressing dishes. One liter per week of EVOO was supplied to the participants in this group. (iii) Mediterranean diet enriched with mixed nuts: positive dietary recommendation about the Mediterranean diet pattern with the addition of nuts. Participants received 30 g of mixed nuts per day (15 g of walnuts, 7.5 g of almonds and 7.5 g hazelnuts).

The PREDIMED study dietitians supervised the dietary intervention. Further details about PREDIMED study dietary intervention has been previously published [14].

End points

Composite primary cardiovascular event

The primary end point was a composite variable made up of the first occurrence of cardiovascular death, or myocardial infarction, or stroke (combining ischemic and hemorrhagic). Diagnostic criteria are available in a supplementary appendix of a previously published article [14].

The three cardiovascular events were also considered separately in the analysis in order to individually ascertain the impact of psychosocial factors.

Cardiovascular events were reviewed and confirmed by an Adjudication Committee of the PREDIMED Study consisting of a team of cardiologists, endocrinologists, neurologists, and ophthalmologists. Members of the committee were blinded to the intervention and dietary habits of the participants; for an event to be accepted a consensus was required. Events that had occurred between October 1st, 2003 and December 1st, 2010 were analyzed. Transient Ischemic Attack was not considered as a stroke. All end points were ascertained by regular contacts with participants and/or families, annual revisions of medical records, data from GPs, and consultation of the National Death Index (Spain).

Statistical analyses

Bivariate analysis was performed using chi-square test for analyzing differences among proportions, and t-student or one-way ANOVA for differences among means. Crude Rate/1000 person-year (95% confidence interval: CI) of cardiovascular events was calculated. Crude and adjusted Hazard ratios (HR) with 95% CI were performed by Cox regression models for the analysis of time-dependent

cardiovascular events in relation to psychosocial factors. Multivariate Cox models were adjusted for age, gender, smoking, alcohol consumption, BMI hypertension, type 2 diabetes, dyslipidemia, family history of premature CVD at baseline, and the randomized arm of the Mediterranean dietary intervention during the trial. To assess whether cardiovascular events could be predicted by unfavorable psychosocial factors related to gender, all multivariate adjusted analysis were stratified by sex. The proportional HR assumption from the multivariate Cox models was validated with time-varying tests (Schoenfeld residuals approach) [19]. The global test p-values were ≥ 0.05 .

Participants were considered censored when no event was registered during the study or data had been lost during follow-up. Censoring was assumed to be independent of the main study variables and non-informative. The resulting bias was, however, minimized by our close participant follow-up.

On the other hand our study was right censoring because some events had not occurred when the study ended.

Individuals lacking information concerning their psychosocial risk factors were not included. As this represented an insubstantial percentage (2.5%), their exclusion was not expected to greatly affect the internal and external validity of the observed results.

Results

Main baseline characteristics of study participants

The mean age of participants was 67.0 years (SD 6.2), and 57.5% were women. Regarding psychosocial factors, 74.8% of the participants had only attained primary education and 2.5% had less than primary school, 18.0% had a previous diagnosis of depression, and 10.0% weak social support (living alone in the household). With respect to cardiovascular risk factors, 14.0% (n = 1020) of the participants were currently smokers, 91.1% (n = 6620) had hypertension, 72.1% (n = 5238) diabetes, 77.8% (n = 5648) dyslipidemia, and 22.2% (n = 1615) reported family history of coronary heart disease.

Characteristics of the population regarding psychosocial factors

Participants with primary and less than primary education were more frequently older, women, and overweight. They had low social support and a higher percentage of type 2 diabetes and depression. In contrast, they consumed less alcohol and were less frequently smokers. Participants with weak social support were more commonly older, women, with dyslipidemia, depression and low education, but they were less frequently smokers. Depression was associated with women, overweight, dyslipidemia, family history of coronary heart disease, weak social support, and a low educational level, however, they consumed less alcohol and tobacco (Table 1).

Table 1 Characteristics of participants according to psychosocial factors at baseline

	Education level			p-value	Social support in the household			p-value	Diagnosis of depression		
	High education* (N = 1646) (%)	Primary education (N = 5433) (%)	Less than primary education (N = 184) (%)		Live with other (N = 6535) (%)	Live alone (N = 728) (%)	None (N = 5954) (%)		Yes (N = 1309) (%)	p-value	
Age (mean; SD [†])	64.6 (6.2)	67.7 (6.1)	69.4 (5.0)	<0.001	66.6 (6.1)	70.1 (6.2)	<0.001	67.0 (6.3)	66.8 (6.0)	0.217	
Sex (Women)	37.4	62.6	89.7	<0.001	54.8	82.1	<0.001	52.7	79.8	0.001	
Type of Mediterranean diet											
Low fat diet	29.0	34.0	26.1	0.453	32.4	34.9	0.130	32.2	34.4	0.096	
With extra-Virgin Olive oil	33.8	34.2	42.4		34.7	31.0		34.2	35.1		
With mixed nuts	37.2	31.8	31.0		32.9	34.1		33.6	30.6		
High alcohol consumption [‡]	30.0	18.8	8.2	<0.001	21.5	17.1	0.007	22.5	14.6	<0.001	
Smoking status											
Never smoked	41.4	66.5	84.8	<0.001	59.9	73.9	<0.001	58.4	74.5	<0.001	
Former smoker	36.9	21.5	9.2		25.5	17.0		27.1	13.5		
Current-smoker	21.7	12.0	6.8		14.6	9.1		14.5	12.0		
Body-mass index (Kg/m ²)	29.3 (3.7)	30.1 (3.8)	30.7 (4.1)	<0.001	30.0 (3.8)	30.0 (4.2)	0.743	29.9 (3.8)	30.5 (4.0)	<0.001	
Cardiovascular risk factors [§]											
Hypertension	90.5	91.2	94.6	0.159	91.0	92.6	0.151	91.1	91.4	0.756	
Type 2 diabetes	67.7	73.2	81.0	<0.001	72.1	72.1	0.998	72.1	72.3	0.840	
Dyslipidemia	77.5	77.8	79.9	0.764	77.4	81.2	0.019	77.2	80.5	0.008	
Family history of premature CHD [¶]	23.7	21.9	20.1	0.231	22.4	21.0	0.404	21.6	25.1	0.007	
Living alone	8.3	10.5	12.5	0.022	—	—	—	9.0	14.7	<0.001	
Diagnostic of depression	15.2	18.6	27.7	<0.001	17.1	26.5	<0.001	—	—	—	
Educational level											
High education*	—	—	—		23.1	18.8	0.022	23.4	19.1	<0.001	
Primary education	—	—	—		74.4	78.0		74.3	77.0		
Less than primary education	—	—	—		2.5	3.2		2.2	3.9		

*High education means university studies or secondary school.

[†]Standard deviation.

[‡]Alcohol consumption presented 68 missing values in its denominator. Standard deviation.

[§]Hypertension (Medical diagnosis of hypertension or taking antihypertensive treatment), Type 2 diabetes (Medical diagnosis of diabetes or taking antidiabetic treatment) and Dyslipidemia (Medical diagnosis of dyslipidemia or taking lowering-lipid therapy).

[¶]CHD denotes coronary heart disease.

The median participant follow-up was 4.8 years (inter-quartile range 2.8 to 5.8). In our sample 280 CVD events occurred. Participants with a high educational level had 56 events (7.9 per 1000 person-year) versus 224 (9.2 per 1000 person-year) in those with a low

educational one. Participants with higher social support had 257 CVD events (9.1 per 1000 person-year) versus 23 (7.5 per 1000 person-year) in those living alone. A total of 248 (9.6 per 1000 person-year) CVD events occurred in people without depression versus 32 (5.7 per

Table 2 Incidence and adjusted hazard ratios for cardiovascular events according to psychosocial factors

	Educational level*		Social support in the household		Diagnosis of depression	
	High education (N = 1646)	Low education (N = 5617)	Live with other (N = 6535)	Live alone (N = 728)	No (N = 5954)	Yes (N = 1309)
Person-year of follow-up	7069,0	24280,89	28287,36	3062,56	25751,12	5598,79
Composite primary cardiovascular event						
Number of events	56	224	257	23	248	32
Crude Rate/1000 person-year (95% CI)	7.9 (5.8–10.0)	9.2 (8.0–10.4)	9.1 (8.0–10.2)	7.5 (4.4–10.6)	9.6 (8.4–10.8)	5.7 (3.7–7.7)
Adjusted Hazard Ratio (95% CI) ^{††}	1.00 (ref)	1.16 (0.85–1.57)	1.00 (ref)	0.85 (0.54–1.32)	1.00 (ref)	0.76 (0.52–1.11)
p-value		0.351		0.458		0.155
Myocardial Infarction						
Number of events	24	79	95	8	90	13
Crude Rate/1000 person-year (95% CI)	3.4 (2.0–4.8)	3.3 (2.5–4.0)	3.4 (2.7–4.0)	2.6 (0.8–4.4)	3.5 (2.8–4.2)	2.3 (1.1–3.6)
Adjusted Hazard Ratio (95% CI) ^{††}	1.00 (ref)	1.10 (0.69–1.78)	1.00 (ref)	1.01 (0.48–2.12)	1.00 (ref)	0.89 (0.49–1.62)
p-value		0.686		0.980		0.699
Stroke						
Number of events	17	119	127	9	121	15
Crude Rate/1000 person-year (95% CI)	2.4 (1.3–3.5)	4.9 (4.0–5.8)	4.5 (3.7–5.3)	2.9 (1.0–4.9)	4.7 (3.9–5.5)	2.7 (1.3–4.0)
Adjusted Hazard Ratio (95% CI) ^{††}	1.00 (ref)	1.83 (1.09–3.09)	1.00 (ref)	0.56 (0.28–1.12)	1.00 (ref)	0.66 (0.38–1.15)
p-value		0.023		0.102		0.145
Cardiovascular Death						
Number of events	25	58	73	10	73	10
Crude Rate/1000 person-year (95% CI)	3.5 (2.2–4.9)	2.4 (1.8–3.0)	2.6 (2.0–3.2)	3.3 (1.2–5.3)	2.8 (2.2–3.5)	1.8 (0.7–2.9)
Adjusted Hazard Ratio (95% CI) ^{††}	1.00 (ref)	0.63 (0.38–1.03)	1.00 (ref)	1.21 (0.60–2.46)	1.00 (ref)	0.93 (0.47–1.84)
p-value		0.064		0.598		0.832

*High education means university studies or secondary school; Low education: up to primary studies.

[†]Multivariable models were adjusted by: age, gender, smoking, alcohol consumption, body-mass index, hypertension, type 2 diabetes, dyslipidemia and family history of premature coronary heart disease, and type Mediterranean diet intervention.

^{††}Test of proportional-hazard assumption (p-value based on the scaled Schoenfeld residuals): Composite primary cardiovascular event model (specific p-value for Educational level: 0.529, Social support: 0.765 and Depression: 0.877); Myocardial infarction model (0.611, 0.717 and 0.914); Stroke model (p-values = 0.204, 0.598 and 0.411); Cardiovascular death model (p-values = 0.810, 0.831 and 0.129).

1000 person-year) in those with depression (Table 2). Low educational level was associated with an increased risk of stroke (adjusted Hazard Ratio (HR): 1.83, 95% CI: 1.09–3.09) (Table 2, Figure 1). The risk of stroke was higher in men (Adjusted HR: 2.11, 95% CI: 1.09–4.06) than in women (adjusted HR: 1.46, 95% CI: 0.62–3.43) (Table 3).

A Mediterranean diet with EVOO or nuts showed a protective combined cardiovascular effect. Current and former smokers had a higher risk of suffering cardiovascular events. Hypertensive individuals tended to have a greater risk of experiencing a cardiovascular event. Diabetics presented more risk of stroke (statistical significance at the limit point: p-value: 0.052). No higher risk for participants with dyslipidemia and family history of premature CHD was found (Table 4).

Discussion

In our study it was observed that an adult population at high cardiovascular risk, with low education level, had an increased risk of stroke.

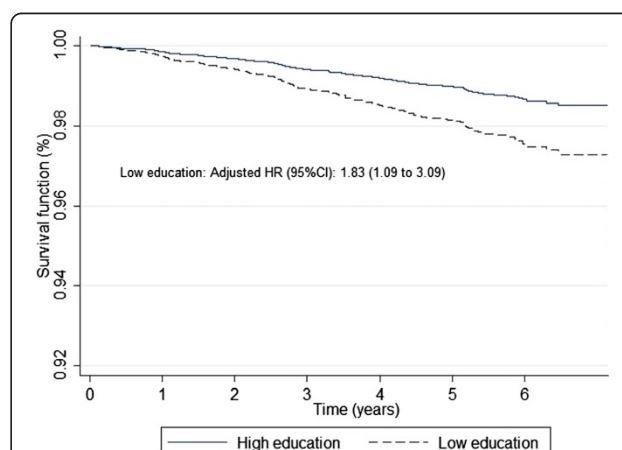


Figure 1 Survival function of stroke adjusted according to education level based on Cox proportional hazard model. The Cox model was adjusted by Sex, age, smoking, alcohol consumption, body mass index, hypertension, type 2 diabetes, dyslipidemia, family history of premature cardiovascular disease, and type of Mediterranean diet intervention. High education means university education or secondary school, and low education denotes primary education.

Table 3 Adjusted hazard ratios for cardiovascular events according to psychosocial factors stratified by gender

	Composite primary cardiovascular event		Myocardial infarction		Stroke		Cardiovascular death	
	Adjusted HR (95% CI) ^{†‡}	p-value	Adjusted HR (95% CI) ^{†‡}	p-value	Adjusted HR (95% CI) ^{†‡}	p-value	Adjusted HR (95% CI) ^{†‡}	p-value
Men								
Educational level*								
High education	1.00 (ref)		1.00 (ref)		1.00 (ref)		1.00 (ref)	
Low education	1.25 (0.87–1.80)	0.223	1.34 (0.76–2.35)	0.308	2.11 (1.09–4.06)	0.026	0.65 (0.36–1.16)	0.148
Social support in the household								
Live with others	1.00 (ref)		1.00 (ref)		1.00 (ref)		1.00 (ref)	
Live alone	0.74 (0.30–1.61)	0.512	0.74 (0.18–3.05)	0.682	0.33 (0.46–2.39)	0.272	1.53 (0.47–4.98)	0.477
Diagnosis of Depression								
No	1.00 (ref)		1.00 (ref)		1.00 (ref)		1.00 (ref)	
Yes	0.76 (0.40–1.46)	0.414	0.50 (0.16–1.60)	0.241	0.56 (0.17–1.79)	0.327	1.42 (0.56–3.62)	0.460
Women								
Educational level*								
High education	1.00 (ref)		1.00 (ref)		1.00 (ref)		1.00 (ref)	
Low education	0.97 (0.56–1.70)	0.922	0.63 (0.27–1.50)	0.295	1.46 (0.62–3.43)	0.383	0.56 (0.22–1.39)	0.211
Social support in the household								
Live with others	1.00 (ref)		1.00 (ref)		1.00 (ref)		1.00 (ref)	
Live alone	0.81 (0.48–1.37)	0.437	1.12 (0.45–2.79)	0.810	0.54 (0.25–1.16)	0.114	1.04 (0.43–2.54)	0.926
Diagnosis of Depression								
No	1.00 (ref)		1.00 (ref)		1.00 (ref)		1.00 (ref)	
Yes	0.76 (0.48–1.22)	0.256	1.19 (0.57–2.48)	0.650	0.71 (0.38–1.33)	0.281	0.71 (0.27–1.88)	0.495

*High education means university studies or secondary school; Low education: up to primary studies.

[†]Multivariable models were adjusted by: age, smoking, alcohol consumption, body-mass index, hypertension, type 2 diabetes, dyslipidemia and family history of premature coronary heart disease, and type Mediterranean diet intervention.

[‡]Global test of proportional-hazard assumption (p-value based on the scaled Schoenfeld residuals) men: Composite primary cardiovascular event model (0.172); Myocardial infarction model (0.723); Stroke model (0.260); Cardiovascular death model (0.369); women: Global test of proportional-hazard assumption (p-value based on the scaled Schoenfeld residuals) women: Composite primary cardiovascular event model (0.553); Myocardial infarction model (0.320); Stroke model (0.870); Cardiovascular death model (0.458).

Educational level was employed as a measure to evaluate socioeconomic position (SP) because it tends to remain stable throughout life. It is strongly related to the possibility of greater social and material opportunities by influencing future employment and income, and the adoption of healthy lifestyles [17]. As a proxy of SP, educational level has been widely used in a number of cardiovascular research studies [8,20,21].

Although, in general, Spain has one of the lowest incidences of cardiovascular diseases, our results linking socioeconomic level and stroke concur with findings from other studies performed in Anglo-Saxon and Scandinavian countries [21-23].

Classic stroke risk factors and harmful lifestyles are likely to be more prevalent among socioeconomically deprived groups [6,22]. In some studies, the socioeconomic gradient observed in the relationship between SP and stroke was partially mediated by traditional risk and psychological factors [24,25]. In our population, however, the association between stroke and educational level was

independent of the cardiovascular risk factor profile and unhealthy lifestyle, as has previously been observed [26].

CVD mortality is declining in Spain yet we observed a high prevalence of poor management of traditional risk factors, and a low rate of proper treatment for the population at risk. Findings that are in agreement with studies carried out on the population attended by the Health System in Catalunya, a region in Spain [27,28].

Strong primary healthcare models play a key role in reducing socioeconomic health inequalities [29]. The Spanish system, for instance is both free and universal with GPs acting as gatekeepers to specialist care. Yet we are of the opinion that, in contrast to other countries where health expenditure has been found to be inversely associated with stroke incidence [30,31], inequality regarding accessibility to health services had a negligible effect on CVD incidence in our population. Indeed, in a previous study we found no differences in the preventive treatment received according to educational level which could justify social inequalities in the incidence of CVD [32].

Table 4 Adjusted hazard ratios for cardiovascular outcomes within all covariables include in the final multivariable models

	Composite primary cardiovascular event		Myocardial infarction		Stroke		Cardiovascular death	
	HR (95% CI) ^{†‡}	p-value	HR (95% CI) ^{†‡}	p-value	HR (95% CI) ^{†‡}	p-value	HR (95% CI) ^{†‡}	p-value
Age (years)	1.08 (1.06–1.10)	<0.001	1.04 (1.00–1.07)	0.034	1.09 (1.05–1.12)	<0.001	1.15 (1.11–1.19)	<0.001
Type of Mediterranean diet								
With extra-Virgin Olive oil	1.00 (ref)		1.00 (ref)		1.00 (ref)		1.00 (ref)	
With mixed nuts	0.97 (0.74–1.35)	0.984	0.98 (0.60–1.60)	0.938	0.76 (0.49–1.22)	0.277	1.37 (0.80–2.34)	0.255
Low fat diet	1.42 (1.07–1.88)	0.014	1.35 (0.84–2.15)	0.205	1.44 (0.98–2.12)	0.062	1.38 (0.80–2.38)	0.242
High alcohol consumption	0.85 (0.63–1.15)	0.292	0.59 (0.35–1.00)	0.052	1.17 (0.77–1.77)	0.472	0.98 (0.58–1.66)	0.949
Smoking status								
Never smoked	1.00 (ref)		1.00 (ref)		1.00 (ref)		1.00 (ref)	
Former smoker	1.45 (1–04–2.03)	0.031	1.47 (0.84–2.56)	0.176	1.14 (0.69–1.86)	0.615	2.27 (1.22– 4.24)	0.010
Current-smoker	1.94 (1–33–2.84)	0.001	2.18 (1.20–3.97)	0.011	1.46 (0.82–2.58)	0.197	2.51 (1.20–5.22)	0.014
Body-mass index (Kg/m ²)	1.01 (0.97–1.04)	0.661	1.01 (0.96–1.07)	0.697	1.00 (0.95–1.04)	0.875	1.03 (0.96–1.09)	0.421
Hypertension	1.79 (1.06–3.02)	0.030	1.53 (0.70–3.32)	0.284	2.19 (0.96–4.99)	0.063	2.22 (0.69–7.08)	0.179
Type 2 diabetes	1.30 (0.98–1.74)	0.071	1.23 (0.78–1.96)	0.374	1.53 (1.00–2.35)	0.052	1.21 (0.71–2.05)	0.477
Dyslipidaemia	0.91 (0.70–1.18)	0.468	0.82 (0.54–1.26)	0.376	0.94 (0.64–1.38)	0.762	0.89 (0.55–1.44)	0.630
Family history of premature CHD [§]	1.24 (0.92–1.68)	0.155	1.56 (0.98–2.48)	0.060	1.25 (0.82–1.91)	0.304	0.70 (0.34–1.40)	0.313

[†]All Hazard Ratios are adjusted by sex and psychosocial factors (educational level, depression and social support in the household).

[‡]Global test of proportional-hazard assumption (p-value based on the scaled Schoenfeld residuals): Composite primary cardiovascular event model (0.471); Myocardial infarction model (0.758); Stroke model (0.303); Cardiovascular death model (0.107).

[§]CHD denotes coronary heart disease.

The fact that the other psychosocial factors considered, such as depression and low social support, were not found to be related to CVD remains to be elucidated. Through the understanding of social disparities in stroke it would be possible to more effectively address social and clinical actions for cardiovascular prevention in the most disadvantaged social groups.

The Spanish population tends to use the health system quite often, as a result, the probability of being treated for comorbid conditions such as depression is high and the effect of this condition on stroke incidence could be reduced by proper treatment. The number of people living alone among our participants was low. It is possible that a longer follow-up or a larger sample might demonstrate some relationship between living alone and CVD incidence. It should also be taken into account that in the Mediterranean countries, families still play an important role in the care of elderly people; therefore, the effect of living alone could be lower than in other countries.

Strengths and limitations

Unfortunately, no other socioeconomic indicators were available to carry out a sensitivity analysis. Educational level has, however, been found to be a reliable indication of socioeconomic position [17]. With respect to evaluating the effect of social support on cardiovascular outcomes, we took into consideration the number of people living in

the home as household size has proven to be a valid proxy [18]. We were, therefore, unable to assess this effect on institutionalized patients or those lacking autonomy. Moreover, since history of depression was self-reported it is possible that the real proportion of depressive patients was under-registered.

Although there are peculiarities in the pathogenesis of hemorrhagic and ischemic stroke, their prevention and management are quite similar, and previous studies have found a relationship between low SP, measured by a deprivation index, for both types. We could not differentiate between hemorrhagic and ischemic stroke because we only had aggregated data [33]. It could be useful in the future to carry out studies to demonstrate whether differences between ischemic and hemorrhagic stroke are due to socioeconomic status.

We are aware that, since several end points have been considered in the analysis and, multiple comparisons among different subgroups of participants may increase type I error. Nevertheless, since our study specifically tested the relationship between psychosocial determinants and cardiovascular events we did not carry out multiple analyses other than those needed to answer the main question.

Conclusions

In a population at high cardiovascular risk, the incidence of stroke was higher in those with lower educational

level. History of depression and low social support were not associated with CVD incidence.

Abbreviations

CVD: Cardiovascular diseases; SD: Standard deviation; HR: Hazard ratios; CI: Confidence interval; SES: Socioeconomic status; GPs: General practitioners; BMI: Body mass index; CHD: Coronary heart disease; ACE: Angiotensin-converting-enzyme; EVOO: Extra-virgin olive oil.

Competing interests

Dr. Estruch reports as serving on the board of, and receiving lecture fees from, the Research Foundation on Wine and Nutrition (FIVIN); serving on the boards of the Beer and Health Foundation and the European Foundation for Alcohol Research (ERAB); receiving lecture fees from Cerveceros de España and Sanofi-Aventis; and receiving grant support through his institution from Novartis. Dr. Ros reports as serving on the board of, and receiving travel support, as well as grant support through his institution, from the California Walnut Commission; serving on the board of the Flora Foundation (Unilever); serving on the board of, and receiving lecture fees from, Roche; serving on the board of, and receiving grant support through his institution from, Amgen; receiving consulting fees from Damm and Abbott Laboratories; receiving consulting fees and lecture fees, as well as grant support through his institution, from Merck; receiving lecture fees from Danone, Pace, AstraZeneca, and Rottapharm; receiving lecture fees and payment for the development of educational presentations, as well as grant support through his institution, from Ferrer; receiving payment for the development of educational presentations from Recordati; and receiving grant support through his institution from Sanofi-Aventis, Takeda, Daiichi Sankyo, Nutrexp, Feiraco, Unilever, and Karo Bio. Dr. Salas-Salvadó reports as serving on the board of, and receiving grant support through his institution, from the International Nut and Dried Fruit Council; reports as serving on the board of Institute Danone Spain; receiving consulting fees from Danone; and receiving grant support through his institution from Eroski and Nestlé. Dr. Arós reports receiving payment for the development of educational presentations from Menarini and AstraZeneca. Dr. Lamuela-Raventós reports as serving on the board of, and receiving lecture fees from, FIVIN; receiving lecture fees from Cerveceros de España; and receiving lecture fees and travel support from PepsiCo. Dr. Serra-Majem reports as serving on the boards of the Mediterranean Diet Foundation and the Beer and Health Foundation. Dr. Pintó reports as serving on the board of, and receiving grant support through his institution from the Residual Risk Reduction Initiative (R3i) Foundation; serving on the board of Omegafor; serving on the board of and receiving payment for the development of educational presentations, as well as grant support through his institution, from Ferrer; receiving consulting fees from Abbott Laboratories; receiving lecture fees, as well as grant support through his institution, from Merck and Roche receiving lecture fees from Danone and Esteve; receiving payment for the development of educational presentations from Menarini; and receiving grant support through his institution from Sanofi-Aventis, Kowa, Unilever, Boehringer Ingelheim, and Karo Bio. No other potential conflict of interest relevant to this article was reported.

Authors' contributions

CM-L and MAM conceived and designed the study. They also analyzed and interpreted the study data, and wrote the first draft of the manuscript. RE, MAM-G, JS-S, OC, DC, FA, EG-G, MF, JL, LS-M, XP, ER, JD-E, JB, JVS, RML-R,VR-G, assisted in the acquisition of data and provided valuable, intellectual contributions to the manuscript draft. All authors have approval the final version submitted for publication.

Acknowledgements

The authors acknowledge the contribution of Stephanie Lonsdale for the English review and edition.

Funding

Instituto de Salud Carlos III, and Centro de Investigación Biomédica en Red de Fisiopatología de la Obesidad y Nutrición, and Centro Nacional de Investigaciones Cardiovasculares, Fondo de Investigación Sanitaria-Fondo Europeo de Desarrollo Regional, Ministerio de Ciencia e Innovación, Fundación Mapfre 2010, Consejería de Salud de la Junta de Andalucía, Public Health Division of the Department of Health of the Autonomous Government of Catalonia, Generalitat Valenciana, and the Regional Government of Navarra. None of the institutions described above have

influenced the design, collection, analysis, and interpretation of data; the writing of the manuscript; and the decision to submit the manuscript for publication.

Author details

¹Department of Paediatrics, Obstetrics, Gynaecology and Preventive Medicine, Universitat Autònoma de Barcelona, Bellaterra, Spain. ²CIBER Fisiopatología de la Obesidad y Nutrición (CIBERObn), Instituto de Salud Carlos III, Madrid, Spain. ³PREDIMED (Prevención con Dieta Mediterránea) Network (RD 06/0045), Instituto de Salud Carlos III, Madrid, Spain. ⁴Department of Internal Medicine of Hospital Clinic, IDIBAPS, University of Barcelona, Barcelona, Spain. ⁵Preventive Medicine and Public Health, University of Navarra, Pamplona, Spain. ⁶Human Nutrition Department, Hospital Universitari Sant Joan, Institut d'Investigació Sanitària Pere Virgili, Universitat Rovira i Virgili, Reus, Spain. ⁷Cardiovascular Risk and Nutrition Research Group of Institute Hospital del Mar (IMIM), Barcelona, Spain. ⁸Department of Preventive Medicine, University of Valencia, Valencia, Spain. ⁹Department of Cardiology, University Hospital of Alava, Vitoria, Spain. ¹⁰Department of Preventive Medicine, University of Malaga, Malaga, Spain. ¹¹Institute of Health Sciences (IUNICS), University of Balearic Islands, and Hospital Son Espases, Palma de Mallorca, Spain. ¹²Department of Family Medicine, Primary Care Division of Seville, San Pablo Health Center, Seville, Spain. ¹³Department of Clinical Sciences, University of Las Palmas de Gran Canaria, Las Palmas, Spain. ¹⁴Lipids and Vascular Risk Unit, Internal Medicine, Hospital Universitario de Bellvitge, Hospitalet de Llobregat, Barcelona, Spain. ¹⁵Lipid Clinic, Department of Endocrinology and Nutrition of Hospital Clinic, Institut d'Investigacions Biomèdiques August Pi I Sunyer, University of Barcelona, Barcelona, Spain. ¹⁶Centro de Salud de Tafalla, Servicio Navarro de Salud, University of Navarra, Pamplona, Spain. ¹⁷Primary Care Division, Institut Català de la Salut, Institut d'Investigació en Atenció Primària IDIAP Jordi Gol, Tarragona-Reus, Spain. ¹⁸Primary Care Division, Valencia Institute of Health, Valencia, Spain. ¹⁹Department of Nutrition and Food Science, School of Pharmacy, Xarxa de Referència en Tecnologia dels Aliments, Instituto de Investigación en Nutrición y Seguridad Alimentaria, University of Barcelona, Barcelona, Spain. ²⁰Instituto de la Grasa, Consejo Superior de Investigaciones Científicas, Sevilla, Spain. ²¹Institut Català de la Salut, Barcelona, Spain. ²²Institut d'Investigació en Atenció Primària IDIAP-Jordi Gol, Barcelona, Spain.

Received: 27 June 2014 Accepted: 22 September 2014

Published: 3 October 2014

References

1. World Health Organization: **Global Atlas on Cardiovascular Disease Prevention and Control**. [http://whqlibdoc.who.int/publications/2011/9789241564373_eng.pdf]
2. Wilson PW, D'Agostino RB, Levy D, Belanger AM, Silbershatz H, Kannel WB: **Prediction of coronary heart disease using risk factor categories**. *Circulation* 1998, **97**:1837-1847.
3. Dans T, Avezum A, Lanás F, McQueen M, Budaj A, Pais P, Varigos J, Lisheng L, INTERHEART Study Investigators: **Effect of potentially modifiable risk factors associated with myocardial infarction in 52 countries (the INTERHEART study): case-control study**. *Lancet* 2004, **364**:937-952.
4. Hemingway H, Marmot M: **Evidence based cardiology: psychosocial factors in the aetiology and prognosis of coronary heart disease. Systematic review of prospective cohort studies**. *BMJ* 1999, **318**:1460-1467.
5. Diez Roux AV: **Residential environments and cardiovascular risk**. *J Urban Health* 2003, **80**:569-589.
6. Kaplan GA, Keil JE: **Socioeconomic factors and cardiovascular disease: a review of the literature**. *Circulation* 1993, **88**:1973-1998.
7. Rozanski A, Blumenthal JA, Davidson KW, Saab PG, Kubzansky L: **The epidemiology, pathophysiology, and management of psychosocial risk factors in cardiac practice: the emerging field of behavioral cardiology**. *J Am Coll Cardiol* 2005, **45**:637-651.
8. Allen CL, Bayraktutan U: **Risk factors for ischaemic stroke**. *Int J Stroke* 2008, **3**:105-116.
9. Eller NH, Netterstrom B, Gyntelberg F, Kristensen TS, Nielsen F, Steptoe A, Theorell T: **Work-related psychosocial factors and the development of ischemic heart disease: a systematic review**. *Cardiol Rev* 2009, **17**:83-97.
10. Marmot M, Allen J, Bell R, Bloomer E, Goldblatt P, Consortium for the European Review of Social Determinants of Health and the Health Divide:

- WHO European review of social determinants of health and the health divide. *Lancet* 2012, **380**:1011–1029.
11. Diaz-Guzman J, Egido JA, Gabriel-Sanchez R, Barbera-Comes G, Fuentes-Gimeno B, Fernandez-Perez C: **Stroke and transient ischemic attack incidence rate in Spain: the IBERICTUS study.** *Cerebrovasc Dis* 2012, **34**:272–281.
 12. European Commission, Eurostat: **Diseases of the circulatory system.** In *Health statistics Atlas on mortality in the European Union, 2009 edition.* Luxembourg: Office for Official Publications of the European Communities; 2009:114–139.
 13. Gonzalez-Zobl G, Grau M, Munoz MA, Martí R, Sanz H, Sala J, Masiá R, Rohlf s I, Ramos R, Marrugat J, Elosua R, Researchers of the REGICOR study: **Socioeconomic status and risk of acute myocardial infarction. Population-based case–control study.** *Rev Esp Cardiol* 2010, **63**:1045–1053.
 14. Estruch R, Ros E, Salas-Salvado J, Covas MI, Corella D, Arós F, Gómez-Gracia E, Ruiz-Gutiérrez V, Fiol M, Lapetra J, Lamuela-Raventos RM, Serra-Majem L, Pintó X, Basora J, Muñoz MA, Sorlí JV, Martínez-González MA, PREDIMED Study Investigators: **Primary prevention of cardiovascular disease with a Mediterranean diet.** *N Engl J Med* 2013, **368**:1279–1290.
 15. Fuente-Arrillaga C, Ruiz ZV, Bes-Rastrollo M, Sampson L, Martínez-González MA: **Reproducibility of an FFQ validated in Spain.** *Public Health Nutr* 2010, **13**:1364–1372.
 16. Martínez-González MA, Fernández-Jarne E, Serrano-Martínez M, Wright M, Gómez-Gracia E: **Development of a short dietary intake questionnaire for the quantitative estimation of adherence to a cardioprotective Mediterranean diet.** *Eur J Clin Nutr* 2004, **58**:1550–1552.
 17. Galobardes B, Shaw M, Lawlor DA, Lynch JW, Davey SG: **Indicators of socioeconomic position (part 1).** *J Epidemiol Community Health* 2006, **60**:7–12.
 18. Udell JA, Steg PG, Scirica BM, Smith SC, Ohman EM, Eagle KA, Goto S, Cho JI, Bhatt DL, for the Reduction of Atherothrombosis for Continued Health (REACH) Registry Investigators: **Living Alone and Cardiovascular Risk in Outpatients at Risk of or With Atherothrombosis.** *Arch Intern Med* 2012, **172**:1086–1095.
 19. Grambsch PM, Therneau TM: **Proportional hazards tests and diagnostics based on weighted residuals.** *Biometrika* 1994, **81**:515–526.
 20. Liu L, Xue F, Ma J, Ma M, Long Y, Newschaffer CJ: **Social position and chronic conditions across the life span and risk of stroke: a life course epidemiological analysis of 22,847 American adults in ages over 50.** *Int J Stroke* 2013, **8**(Suppl A100):50–55.
 21. Addo J, Ayerbe L, Mohan KM, Crichton S, Sheldenkar A, Chen R, Wolfe CD, McKevitt C: **Socioeconomic status and stroke: an updated review.** *Stroke* 2012, **43**:1186–1191.
 22. Grimaud O, Bejot Y, Heritage Z, Vallée J, Durier J, Cadot E, Giroud M, Chauvin P: **Incidence of stroke and socioeconomic neighborhood characteristics: an ecological analysis of Dijon stroke registry.** *Stroke* 2011, **42**:1201–1206.
 23. Heeley EL, Wei JW, Carter K, Islam MS, Thrift AG, Hankey GJ, Cass A, Anderson CS: **Socioeconomic disparities in stroke rates and outcome: pooled analysis of stroke incidence studies in Australia and New Zealand.** *Med J Aust* 2011, **195**:10–14.
 24. Avendano M, Kawachi I, Van LF, Boshuizen HC, Mackenbach JP, Van den Bos GA, Fay ME, Berkman LF: **Socioeconomic status and stroke incidence in the US elderly: the role of risk factors in the EPESE study.** *Stroke* 2006, **37**:1368–1373.
 25. Kerr GD, Slavin H, Clark D, Coupar F, Langhorne P, Stott DJ: **Do vascular risk factors explain the association between socioeconomic status and stroke incidence: a meta-analysis.** *Cerebrovasc Dis* 2011, **31**:57–63.
 26. Morris RW, Whincup PH, Emberson JR, Lampe FC, Walker M, Shaper AG: **North–south gradients in Britain for stroke and CHD: are they explained by the same factors?** *Stroke* 2003, **34**:2604–2609.
 27. Catalán-Ramos A, Verdú JM, Grau M, Iglesias-Rodal M, Del Val García JL, Consola A, Comin E, GPC-ICS Group: **Population prevalence and control of cardiovascular risk factors: What electronic medical records tell us.** *Aten Primaria* 2014, **46**:15–24.
 28. Baena-Díez JM, Félix FJ, Grau M, Cabrera de León A, Sanz H, Leal M, Elosua R, Rodríguez-Pérez M del C, Guembe MJ, Torán P, Vega-Alonso T, Ortiz H, Pérez-Castán JF, Frontera-Juan G, Lapetra J, Tormo MJ, Segura A, Fernández-Bergés D, Marrugat J: **Risk factor treatment and control in relation to coronary disease risk in the Spanish population of the DARIOS Study.** *Rev Esp Cardiol* 2011, **64**:766–773.
 29. Starfield B: **Primary care: an increasingly important contributor to effectiveness, equity, and efficiency of health services.** *SESPAS report 2012.* *Gac Sanit* 2012, **26**(Suppl 1):20–26.
 30. Kapral MK, Wang H, Mamdani M, Tu JV: **Effect of socioeconomic status on treatment and mortality after stroke.** *Stroke* 2002, **33**:268–273.
 31. Thrift AG, Arabshahi S: **Is stroke incidence in low- to middle-income countries driven by economics?** *Int J Stroke* 2012, **7**:307–308.
 32. Mejía-Lancheros C, Estruch R, Martínez-González MA, Salas-Salvado J, Corella D, Gómez-Gracia E, Fiol M, Lapetra J, Covas MI, Arós F, Serra-Majem L, Pintó X, Basora J, Sorlí JV, Muñoz MA, PREDIMED Study Investigators: **Socioeconomic Status and Health Inequalities for Cardiovascular Prevention Among Elderly Spaniards.** *Rev Esp Cardiol* 2013, **66**:803–811.
 33. Cesaroni G, Agabiti N, Forastiere F, Perucci CA: **Socioeconomic differences in stroke incidence and prognosis under a universal healthcare system.** *Stroke* 2009, **40**:2812–2819.

doi:10.1186/1471-2261-14-135

Cite this article as: Mejía-Lancheros et al.: Impact of psychosocial factors on cardiovascular morbimortality: a prospective cohort study. *BMC Cardiovascular Disorders* 2014 **14**:135.

Submit your next manuscript to BioMed Central and take full advantage of:

- Convenient online submission
- Thorough peer review
- No space constraints or color figure charges
- Immediate publication on acceptance
- Inclusion in PubMed, CAS, Scopus and Google Scholar
- Research which is freely available for redistribution

Submit your manuscript at
www.biomedcentral.com/submit

