

# Roman Open Data

<http://www.romanopendata.eu>

Xavi Gimenez, Guillem Rull, Jordi Pérez González, Alessandro Mosca, Bernardo Rondelli and José Remesal Rodríguez

xavier.gimenez@siriscadematic.com

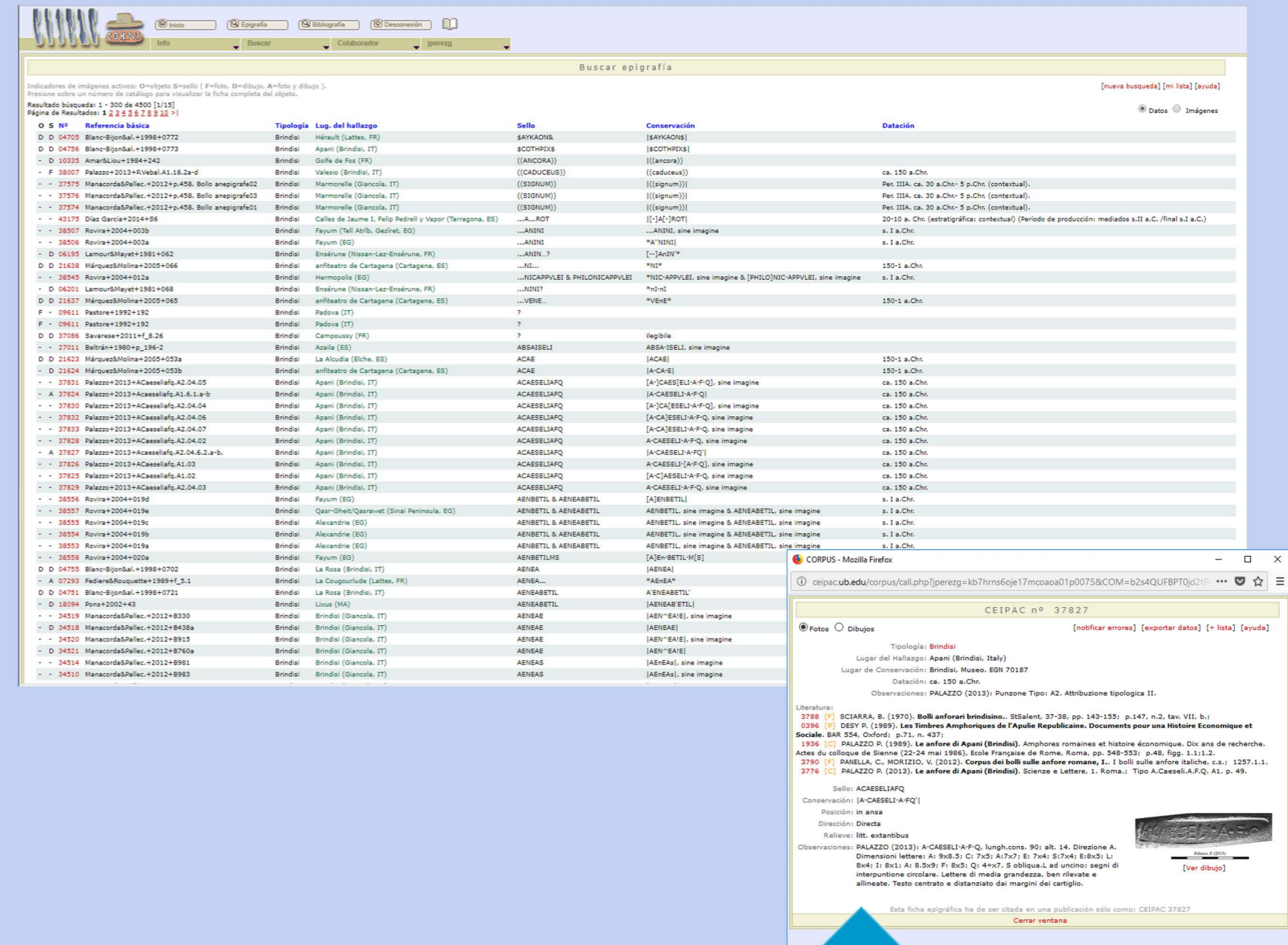
guillem.rull@siriscadematic.com

jperez@ub.edu

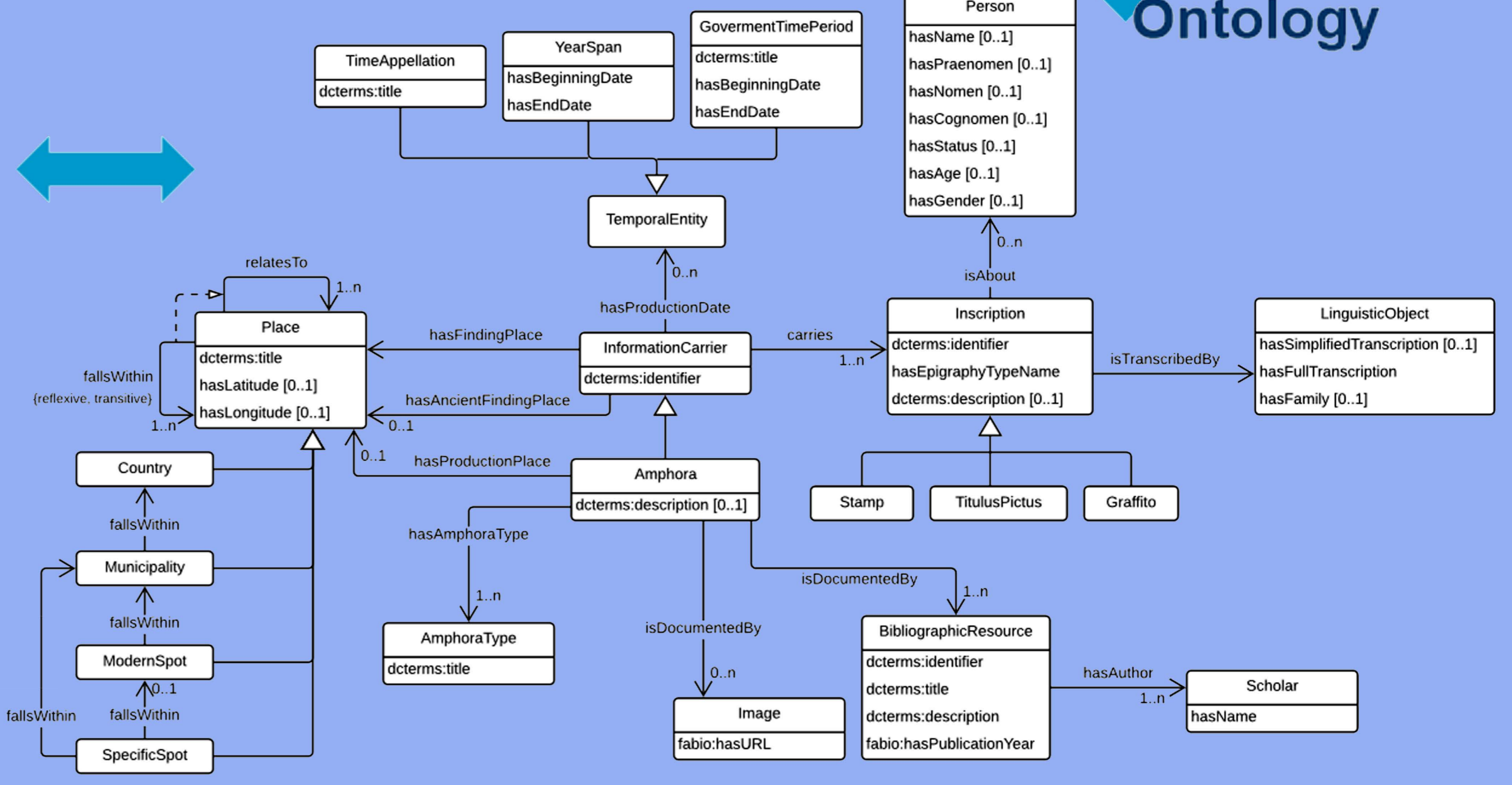
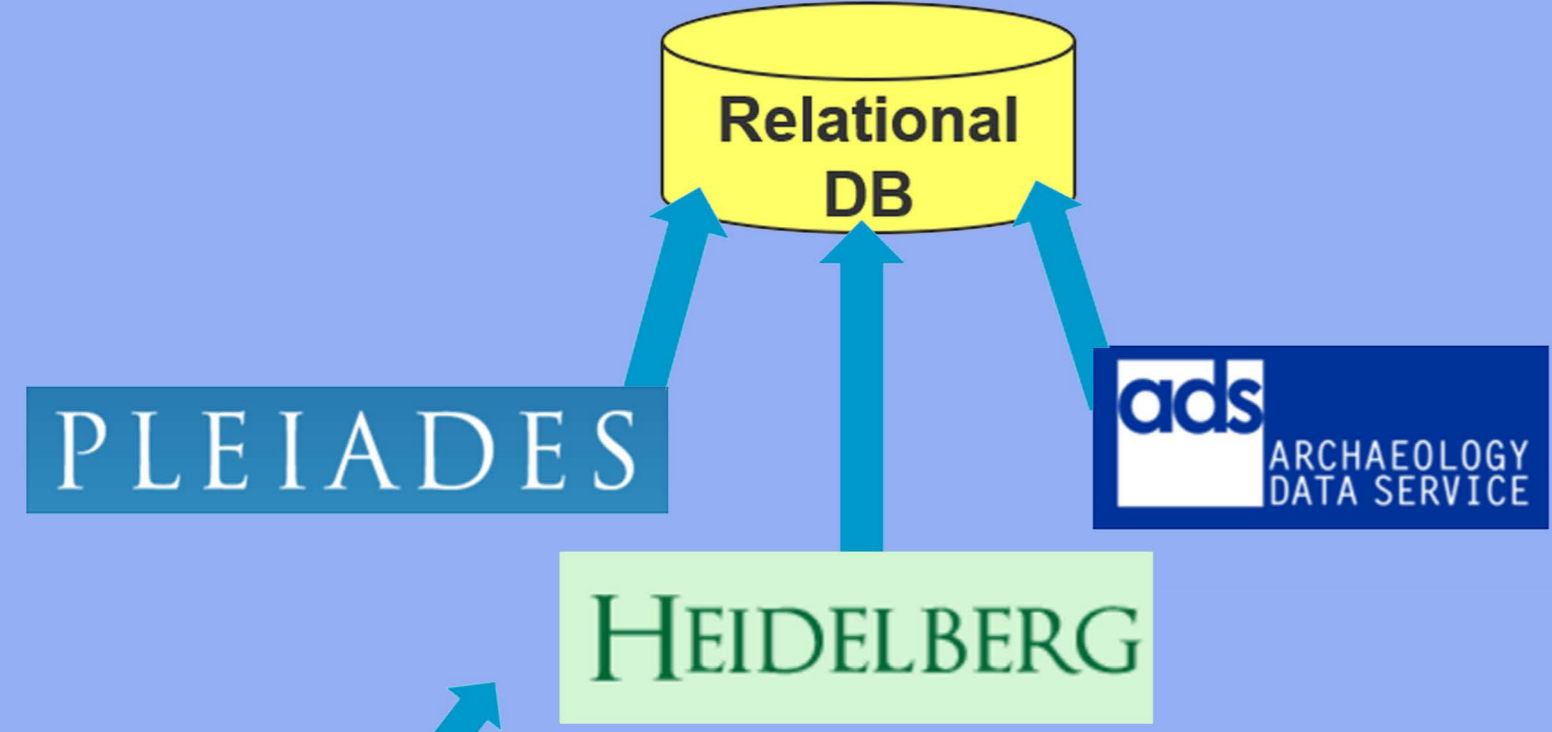
alessandro.mosca@siriscadematic.com

bernardo.rondelli@siriscadematic.com

remesal@ub.edu



## ontop + Mappings

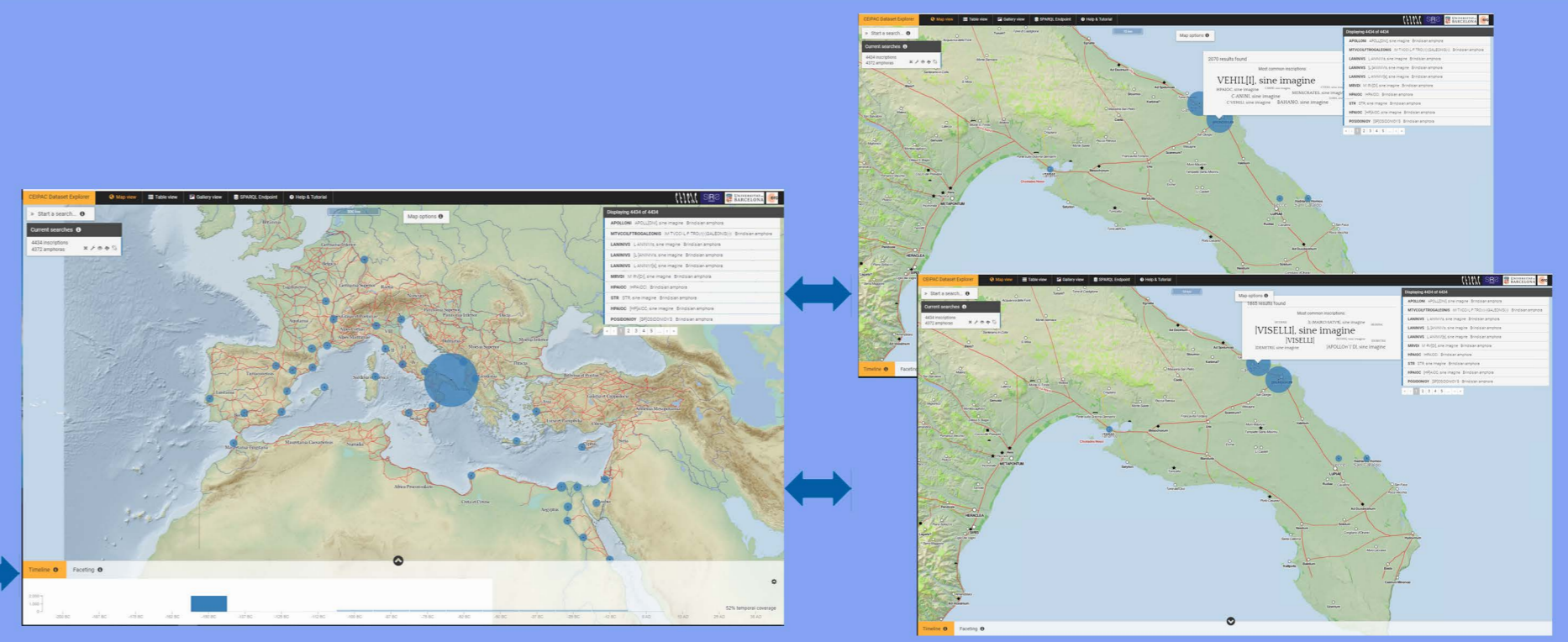
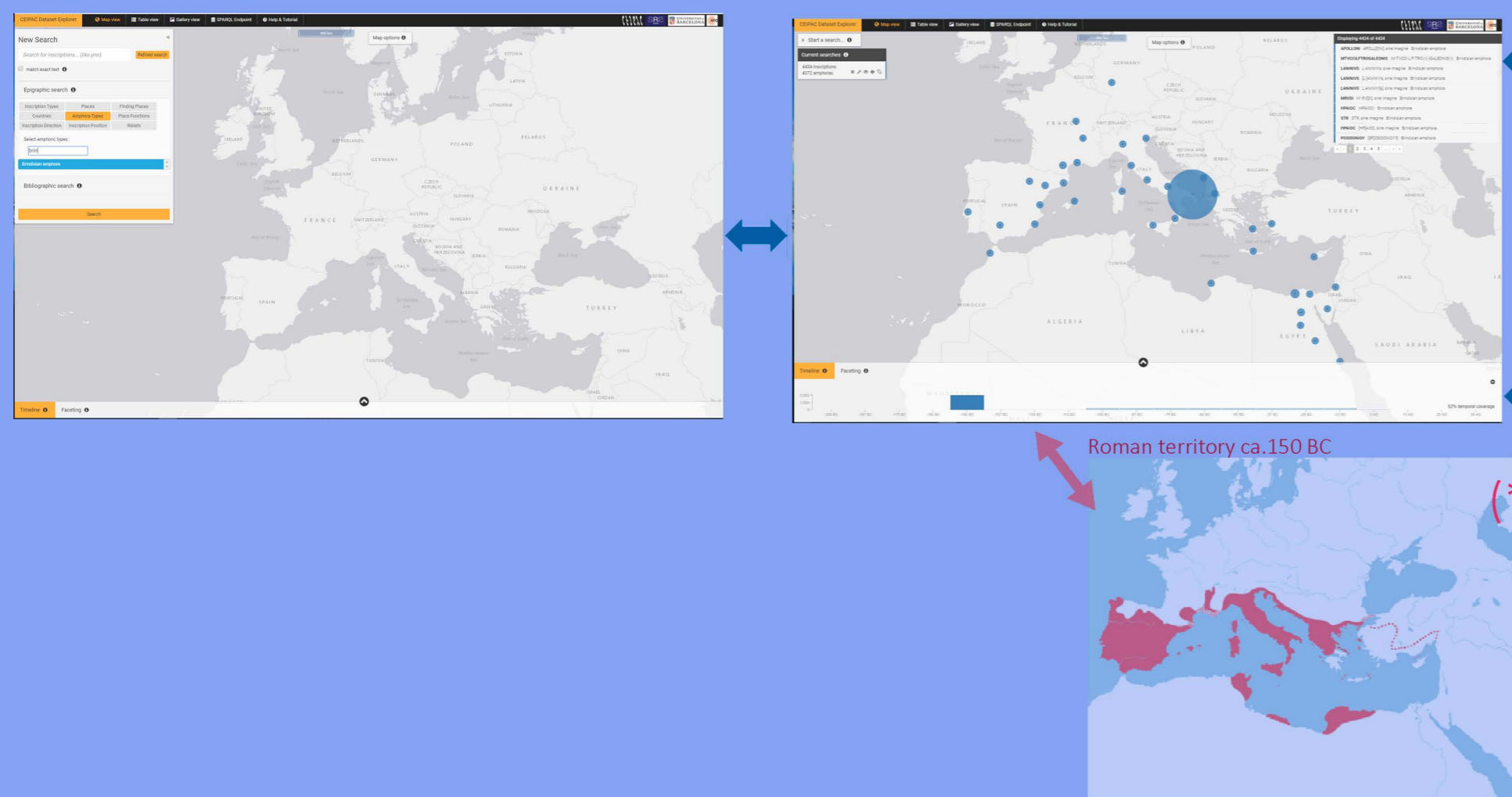


```

EPNet: Production and Distribution of Food during the Roman Empire: Economic and Political Dynamics
11) select
12)   ?x rdf:type ?type .
13)   ?x rdfs:label ?label .
14)   ?x rdfs:comment ?comment .
15)   ?x rdfs:isDefinedBy ?property .
16)   ?x rdfs:isDefinedBy ?class .
17)   ?x rdfs:isDefinedBy ?individual .
18)   ?x rdfs:isDefinedBy ?literal .
19)   ?x rdfs:isDefinedBy ?uri .
20)   ?x rdfs:isDefinedBy ?iri .
21)   ?x rdfs:isDefinedBy ?iri .
22)   ?x rdfs:isDefinedBy ?iri .
23)   ?x rdfs:isDefinedBy ?iri .
24)   ?x rdfs:isDefinedBy ?iri .
25)   ?x rdfs:isDefinedBy ?iri .
26)   ?x rdfs:isDefinedBy ?iri .
27)   ?x rdfs:isDefinedBy ?iri .
28)   ?x rdfs:isDefinedBy ?iri .
29)   ?x rdfs:isDefinedBy ?iri .
30)   ?x rdfs:isDefinedBy ?iri .
31)   ?x rdfs:isDefinedBy ?iri .
32)   ?x rdfs:isDefinedBy ?iri .
33)   ?x rdfs:isDefinedBy ?iri .
34)   ?x rdfs:isDefinedBy ?iri .
35)   ?x rdfs:isDefinedBy ?iri .
36)   ?x rdfs:isDefinedBy ?iri .
37)   ?x rdfs:isDefinedBy ?iri .
38)   ?x rdfs:isDefinedBy ?iri .
39)   ?x rdfs:isDefinedBy ?iri .
40)   ?x rdfs:isDefinedBy ?iri .
41)   ?x rdfs:isDefinedBy ?iri .
42)   ?x rdfs:isDefinedBy ?iri .
43)   ?x rdfs:isDefinedBy ?iri .
44)   ?x rdfs:isDefinedBy ?iri .
45)   ?x rdfs:isDefinedBy ?iri .
46)   ?x rdfs:isDefinedBy ?iri .
47)   ?x rdfs:isDefinedBy ?iri .
48)   ?x rdfs:isDefinedBy ?iri .
49)   ?x rdfs:isDefinedBy ?iri .
50)   ?x rdfs:isDefinedBy ?iri .
51)   ?x rdfs:isDefinedBy ?iri .
52)   ?x rdfs:isDefinedBy ?iri .
53)   ?x rdfs:isDefinedBy ?iri .
54)   ?x rdfs:isDefinedBy ?iri .
55)   ?x rdfs:isDefinedBy ?iri .
56)   ?x rdfs:isDefinedBy ?iri .
57)   ?x rdfs:isDefinedBy ?iri .
58)   ?x rdfs:isDefinedBy ?iri .
59)   ?x rdfs:isDefinedBy ?iri .
60)   ?x rdfs:isDefinedBy ?iri .
61)   ?x rdfs:isDefinedBy ?iri .
62)   ?x rdfs:isDefinedBy ?iri .
63)   ?x rdfs:isDefinedBy ?iri .
64)   ?x rdfs:isDefinedBy ?iri .
65)   ?x rdfs:isDefinedBy ?iri .
66)   ?x rdfs:isDefinedBy ?iri .
67)   ?x rdfs:isDefinedBy ?iri .
68)   ?x rdfs:isDefinedBy ?iri .
69)   ?x rdfs:isDefinedBy ?iri .
70)   ?x rdfs:isDefinedBy ?iri .
71)   ?x rdfs:isDefinedBy ?iri .
72)   ?x rdfs:isDefinedBy ?iri .
73)   ?x rdfs:isDefinedBy ?iri .
74)   ?x rdfs:isDefinedBy ?iri .
75)   ?x rdfs:isDefinedBy ?iri .
76)   ?x rdfs:isDefinedBy ?iri .
77)   ?x rdfs:isDefinedBy ?iri .
78)   ?x rdfs:isDefinedBy ?iri .
79)   ?x rdfs:isDefinedBy ?iri .
80)   ?x rdfs:isDefinedBy ?iri .
81)   ?x rdfs:isDefinedBy ?iri .
82)   ?x rdfs:isDefinedBy ?iri .
83)   ?x rdfs:isDefinedBy ?iri .
84)   ?x rdfs:isDefinedBy ?iri .
85)   ?x rdfs:isDefinedBy ?iri .
86)   ?x rdfs:isDefinedBy ?iri .
87)   ?x rdfs:isDefinedBy ?iri .
88)   ?x rdfs:isDefinedBy ?iri .
89)   ?x rdfs:isDefinedBy ?iri .
90)   ?x rdfs:isDefinedBy ?iri .
91)   ?x rdfs:isDefinedBy ?iri .
92)   ?x rdfs:isDefinedBy ?iri .
93)   ?x rdfs:isDefinedBy ?iri .
94)   ?x rdfs:isDefinedBy ?iri .
95)   ?x rdfs:isDefinedBy ?iri .
96)   ?x rdfs:isDefinedBy ?iri .
97)   ?x rdfs:isDefinedBy ?iri .
98)   ?x rdfs:isDefinedBy ?iri .
99)   ?x rdfs:isDefinedBy ?iri .
100)  ?x rdfs:isDefinedBy ?iri .
  
```



example: Brindisian amphoras



Start a search...  
...Brindisi olive oil amphoras with epigraphy.

Case studies:

- Workshops of Giancola and Apani: Nearly 400 new epigraphs found there. We can visualize the most prominent stamps produced by each workshop (e.g. VEHLI in Apani or VISELLI in Giancola) and how these were distributed along the Roman territory.
- Conquered Roman territories ca. 150 BC (\*): We can see that the distribution of the amphoras covers most of these territories. There are three major concentrations in Hispania, Gaul and Asia, most likely amphoras to be consumed by either the Romans displaced there or by the indigenous elite.
- Egypt: While the territory does not yet belong politically to Rome, we can visualize the existence of commercial activity due to the first Italo-Roman merchants settled in Egyptian territory, who provided themselves with products being commercialized there.

### PROJECT FUNDED BY

- Economic and Political Networks (EPNet Project) (ERC-2013-ADG-340828)
- Relaciones Interprovinciales en el Imperio Romano.
- Producción y comercio de alimentos hispanos (Provinciae Baetica et Tarraconensis) (HAR2017-85635-P)
- Centro para el Estudio de la Interdependencia Provincial en la Antigüedad Clásica (CEIPAC) (2017 SGR 512)

### References

- Calvanese D., Liuzzo P., Mosca A., Remesal J., Rezk M., Rull G. (2016) Ontology-based data integration in EPNet: Production and distribution of food during the Roman Empire, in Engineering Applications of Artificial Intelligence. Volume 51, pages 212-229.
- Remesal, J., Aguilera Martín A., García Sánchez M., Martín-Arroyo Sánchez D.-J., Pérez González J., Revilla Calvo V. (2015) Centro para el Estudio de la Interdependencia Provincial en la Antigüedad Clásica (CEIPAC), in Pyrenae, Núm. 50, pages 245-275.
- Remesal J., Díaz-Guilera A., Rondelli B., Rubio X., Aguilera A., Martín-Arroyo D., Mosca A., Rull G. (2015) The EPNet Project. Production and distribution of food during the Roman Empire: economics and political dynamics, in Information Technologies for Epigraphy and Cultural Heritage. Proceedings of the First EAGLE International Conference. Europeana Eagle project. Convegni, Studi umanistici-Antichistica. Sapienza. Università Editrice. pages 455-464.