



original reports

Predicting Outcomes in Men With Metastatic Nonseminomatous Germ Cell Tumors (NSGCT): Results From the IGCCCG Update Consortium

Silke Gillessen, MD^{1,2,3}; Nicolas Sauv , MSc⁴; Laurence Collette, PhD⁴; Gedske Daugaard, MD⁵; Ronald de Wit, MD⁶; Costantine Albany, MD⁷; Alexey Tryakin, MD^{8,9}; Karim Fizazi, MD¹⁰; Olof Stahl, MD¹¹; Jourik A. Gietema, MD¹²; Ugo De Giorgi, MD¹³; Fay H. Cafferty, PhD¹⁴; Aaron R. Hansen, MD¹⁵; Torgrim Tandstad, MD¹⁶; Robert A. Huddart, MD¹⁷; Andrea Necchi, MD¹⁸; Christopher J. Sweeney, DM¹⁹; Xavier Garcia-Del-Muro, MD²⁰; Daniel Y. C. Heng, MD²¹; Anja Lorch, DM^{22,23}; Michal Chovanec, MD²⁴; Eric Winquist, MD²⁵; Peter Grimison, MD²⁶; Darren R. Feldman, MD^{27,28}; Angelika Terbuch, MD²⁹; Marcus Hentrich, MD³⁰; Carsten Bokemeyer, MD³¹; Helene Negaard, MD³²; Christian Fankhauser, MD³³; Jonathan Shamash, MD³⁴; David J. Vaughn, MD³⁵; Cora N. Sternberg, MD³⁶; Axel Heidenreich, MD³⁷; and J rg Beyer, MD³⁸; for the International Germ Cell Cancer Classification Update Consortium

abstract

PURPOSE The classification of the International Germ Cell Cancer Collaborative Group (IGCCCG) plays a pivotal role in the management of metastatic germ cell tumors but relies on data of patients treated between 1975 and 1990.

MATERIALS AND METHODS Data on 9,728 men with metastatic nonseminomatous germ cell tumors treated with cisplatin- and etoposide-based first-line chemotherapy between 1990 and 2013 were collected from 30 institutions or collaborative groups in Europe, North America, and Australia. Clinical trial and registry data were included. Primary end points were progression-free survival (PFS) and overall survival (OS). The survival estimates were updated for the current era. Additionally, a novel prognostic model for PFS was developed in 3,543 patients with complete information on potentially relevant variables. The results were validated in an independent data set.

RESULTS Compared with the original IGCCCG publication, 5-year PFS remained similar in patients with good prognosis with 89% (87%-91%) versus 90% (95% CI, 89 to 91), but the 5-year OS increased from 92% (90%-94%) to 96% (95%-96%). In patients with intermediate prognosis, PFS remained similar with 75% (71%-79%) versus 78% (76%-80%) and the OS increased from 80% (76%-84%) to 89% (88%-91%). In patients with poor prognosis, the PFS increased from 41% (95% CI, 35 to 47) to 54% (95% CI, 52 to 56) and the OS from 48% (95% CI, 42 to 54) to 67% (95% CI, 65 to 69). A more granular prognostic model was developed and independently validated. This model identified a new cutoff of lactate dehydrogenase at a 2.5 upper limit of normal and increasing age and presence of lung metastases as additional adverse prognostic factors. An online calculator is provided (<https://www.eortc.org/IGCCCG-Update>).

CONCLUSION The IGCCCG Update model improves individual prognostication in metastatic nonseminomatous germ cell tumors. Increasing age and lung metastases add granularity to the original IGCCCG classification as adverse prognostic factors.

J Clin Oncol 39:1563-1574.   2021 by American Society of Clinical Oncology

Licensed under the Creative Commons Attribution 4.0 License

ASSOCIATED CONTENT

Appendix

Data Supplement

Protocol

Author affiliations and support information (if applicable) appear at the end of this article.

Accepted on February 1, 2021 and published at ascopubs.org/journal/jco on April 6, 2021; DOI <https://doi.org/10.1200/JCO.20.03296>

INTRODUCTION

About half of the patients with nonseminomatous germ cell tumors (GCT) (nonseminomatous germ cell tumors [NSGCT]) present with metastatic disease. Their cure rate is highly variable depending on histology, primary tumor location, tumor marker levels, and metastatic sites. In 1997, the International Germ Cell Cancer Collaborative Group (IGCCCG) published a classification, which became the accepted international standard and replaced all previous ones.¹

In recent years, improved survival rates in metastatic NSGCT have been reported, possibly because of

improved diagnostic tools, improved supportive care, introduction of the IGCCCG prognostic classification and tailored treatment according to this classification, better guideline adherence with standard use of cisplatin- and etoposide-based first-line treatments, more stringent use of postchemotherapy surgery, improved salvage treatments, and centralized management at dedicated expert centers or a combination of these factors.²⁻⁷

According to the original IGCCCG classification, metastatic NSGCT are split into good, intermediate, and poor prognostic categories based on levels of alpha-fetoprotein (AFP), human chorionic gonadotropin

(hCG), and lactate dehydrogenase (LDH) as well as the presence of nonpulmonary visceral metastases (NPVM). In addition, all primary mediastinal NSGCT are classified as poor, irrespective of other factors.¹ However, patients included in the original IGCCCG analysis were treated between 1975 and 1990, and not all had received cisplatin or etoposide, which would be the treatment backbone for metastatic NSGCT today.^{3,7}

The IGCCCG Update Consortium collected data on metastatic NSGCT with two major goals: first, to validate the original IGCCCG criteria and update survival probabilities in a modern cohort and second, to explore additional prognostic factors that may add granularity to the original IGCCCG prognostic groups and explain some of the heterogeneities found within the groups of the original IGCCCG classification.⁸

MATERIALS AND METHODS

The IGCCCG Update Consortium

The IGCCCG Update Consortium consisted of 30 institutions or collaborative groups in Europe, North America, and Australia. Potential contributors were identified through contact between peers, supplemented by a PUBMED search. The principal investigators of individual trials were invited to participate in the initiative based on a written data sharing agreement.

In addition, the coordinators of national cooperative groups in GCT or principal physicians at large cancer centers were contacted with respect to the availability of national or local cancer registries in electronic format. Investigators were asked to contribute consecutive patients. The Protocol (online only) and the list of collected data items are available in the Data Supplement (online only).

Data Collection

The purpose of the collaboration was to establish a common electronic database with data of patients with metastatic GCT treated between 1990 and 2013: the IGCCCG Update Data Warehouse. To ensure appropriate representation of patients and because trials often limit eligibility to specific IGCCCG prognostic groups, structured data from national registries, databases, or large cohorts of single center data on consecutively treated patients who fulfilled the Protocol data and eligibility requirements were collected in addition to data from clinical trials.

After signing of the data sharing agreements, patient-level data were aggregated, normalized, and harmonized. Data were processed centrally and stored in a secure format at the headquarters of the European Organisation of Research and Treatment of Cancer in Brussels, Belgium.

Patients and Data

Thirty participating members of the IGCCCG consortium provided anonymized data on consecutive adult male

patients with metastatic NSGCT or primary retroperitoneal or mediastinal NSGCT also when not metastatic.

All patients had to receive cisplatin- and etoposide-based conventional-dose first-line treatment or upfront high-dose chemotherapy requiring stem-cell support for NSGCT. Patients with prior chemotherapy for metastatic disease, those included in the original IGCCCG analysis, and patients with primary GCT of the brain were ineligible. Patients treated with conventional chemotherapy had to receive minimum three cycles; patients with less than three cycles were allowed, provided that there was enough evidence that at least three cycles were intended. The treatment intended to be given to the patients was recorded where available, and treatments actually given otherwise.

Data items included the original IGCCCG group, age, date of metastatic diagnosis, and primary site; levels of serum AFP, hCG, and LDH at diagnosis and before chemotherapy, and the presence and location of metastases. The type and number of chemotherapy cycles were obtained, and progression status, vital status, cause of death, and disease status at last follow-up were recorded.

Trials and Cohorts

We asked for electronic databases of studies and cohorts comprising a minimum of 100 eligible patients for inclusion in the warehouse. Only databases of first-line chemotherapy as described in the patient eligibility criteria were included. Retrospective data of first-line treatments of patients who were primarily referred for relapse were not included, because it would have artificially inflated the progression probabilities in the data warehouse.

End Points

Primary end points were progression-free survival (PFS) and overall survival (OS). OS was defined as the time from start of chemotherapy to death of any cause. PFS was defined from start of chemotherapy to progression, defined by radiological progression, unequivocal tumor marker increase, or death, whichever came first. PFS was used for the prognostic model training.

Statistical Methods

All patients with available PFS and/or OS information were used to update the survival probabilities. Kaplan-Meier estimates were used to update survival estimates according to the original IGCCCG. 95% CI are provided via log-log transform.^{9,10}

To build a new prognostic model allowing for individual prediction, an analysis set consisting of eligible patients with all considered explanatory variables was created. These variables were the prechemotherapy AFP and hCG as continuous variables and LDH levels times upper limit of normal (ULN), site of primary tumor, age (in years) as a continuous variable, presence of NPVM and presence of lung metastases. Patients with unspecified other primary tumor site were excluded. The increase in risk because of

AFP and hCG elevations was modeled only for unequivocal marker elevation, defined as AFP > 30 ng/mL and hCG > 5U/L, respectively. Values below those thresholds were considered equivocal and were grouped with values < ULN. Studies forming the analysis set were split into six major clusters based on geographical considerations to account for some of the heterogeneities between patient populations. Details on these clusters are given in the Data Supplement.

Two thirds of studies forming each cluster were included in the training set, whereas the remaining studies formed the independent validation set. Because of the lower number of events for OS, the prognostic IGCCCG Update model was developed for PFS, based on all patients in the training set with complete PFS information. Both end points were administratively censored at 3 years to harmonize duration of follow-up across data sources since most events had occurred by this time (Appendix, online only).

All candidate variables were used for model building. Continuous variables were assessed for linearity based on graphical checks and transformed or categorized if warranted. The experts from the steering committee identified a priori the most likely clinically relevant interactions to be considered as the interactions between the presence of NPVM and the level of the prechemotherapy markers (AFP, hCG, and LDH). These interactions were globally tested at the 5% significance level.

The final IGCCCG Update model is defined in two parts: (1) The prognostic score, which models the prognostic impact of each covariate on PFS. The prognostic score of the final IGCCCG Update model was obtained by incorporating all candidate variables in a Cox proportional hazards model, stratified on the six clusters previously specified. (2) The baseline hazard, which models the risk of progression as a function of time for patients who had baseline levels of all prognostic factors entered in the model. The baseline hazard for the final IGCCCG Update model was taken as the average of the six cluster-specific baseline hazard using a Royston-Parmar parametric model, with the score previously obtained as sole covariate.¹¹

The performance of the final IGCCCG Update model was investigated in the training and validation set. Overall performance over time was assessed using an integrated Brier score (IBS), which integrates the apparent estimate of the prediction error over 3 years.¹² Prediction accuracy was assessed via calibration plots, whereas the discriminative ability of the prognostic score was evaluated using time-dependent area under the curve (AUC).¹³

The final IGCCCG Update model was graphically represented via nomograms.

All analyses were performed using SAS version 9.4 (Cary, NC), R software (version 3.6.0), and Stata version 13 (StataCorp, Texas).

RESULTS

Patient Characteristics

In total, data on 13,684 patients with GCT were received, of whom 12,179 (89%) were eligible. Of these patients, 9,728 had been diagnosed as NSGCT based on histology and/or unequivocal AFP elevations. Reasons for ineligibility are listed in the CONSORT diagram (Fig 1). The original IGCCCG groups could be calculated in 9,576 of 9,728 (98%) patients, whose data were used to update OS probabilities. Among them, 7,313 patients were initially recorded in local or national cohorts, whereas 2,263 came from clinical trial databases. Because of inconsistent or missing data, 9,420 (99%) patients were used to update PFS probabilities.

Disease progression occurred in 2,190 patients, and 1,352 patients died. The PFS median follow-up was 6.4 years (7.4 years for cohorts and 3.8 years for trials), and 81% had been followed for at least 3 years from start of chemotherapy (87% for cohorts and 64% for trials).

The analysis set consisted of 4,955 patients with NSGCT, in whom potentially relevant covariates were available. The analysis set was split between a training set of 3,570 patients (72%, 3,543 with PFS information) and a validation set of 1,385 patients (28%, 1,360 with PFS information).

Table 1 shows the baseline characteristics of the 4,955 patients in the analysis set, divided between training and validation sets. Slightly more patients in the validation set had NPVM (poor prognosis IGCCCG) compared with the training set. Additionally, the patients in the validation set were treated more recently compared with patients in the training set (83.6% of patients in the validation set were treated after 2,000 v 60.5% in the training set). Finally, 97.6% of all trial patients were allocated to the training set.

A comparison between patients included or not included in the prognostic model analysis set showed that the most common reason for exclusion was missing information about LDH (75.8%) (Data Supplement) and that there were no differences in PFS or OS between patients included in or excluded from the analysis set (Data Supplement).

Updated Outcomes by Original IGCCCG

Table 2 shows the updated 5-year OS and PFS probabilities in the present series as compared with those in the original IGCCCG publication.¹ Corresponding Kaplan-Meier curves of OS and PFS are presented in Figures 2A and 2B.

The 5-year OS significantly improved for all IGCCCG groups, as shown by the nonoverlapping confidence intervals. In contrast, 5-year PFS significantly improved only for poor IGCCCG patients.

New Prognostic IGCCCG Update Model for Individual Prediction of PFS

The training set for the prognostic model included 3,543 patients with complete information on potentially important

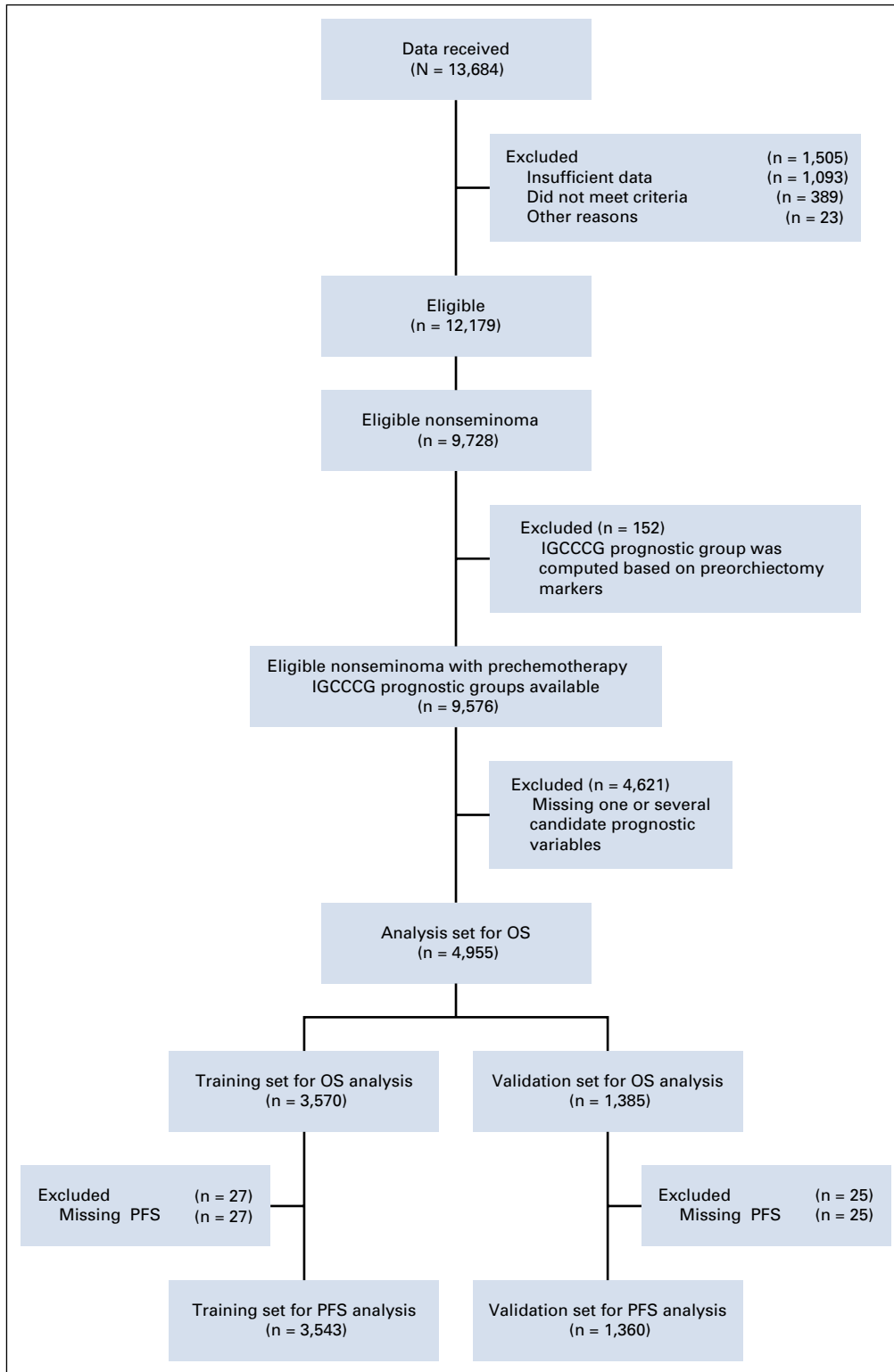


FIG 1. CONSORT diagram. IGCCCG, International Germ Cell Cancer Collaborative Group; OS, overall survival; PFS, progression-free survival.

TABLE 1. Baseline Characteristics for Patients in the Analysis Set

Baseline Characteristics	Analysis Set		Total (N = 4,955)
	Training (n = 3,570)	Validation (n = 1,385)	
	n (%)	n (%)	n (%)
Age at diagnosis of metastatic disease (years)			
Median	28	30	29
Range	15-70	15-70	15-70
Q1-Q3	23-35	24-36	24-35
Original IGCCCG prognostic groups			
Good	1,711 (47.9)	554 (40.0)	2,265 (45.7)
Intermediate	1,047 (29.3)	445 (32.1)	1,492 (30.1)
Poor	812 (22.7)	386 (27.9)	1,198 (24.2)
Progression-free survival status			
No progression	2,762 (77.4)	1,038 (74.9)	3,800 (76.7)
Progression in the first 3 years	668 (18.7)	279 (20.1)	947 (19.1)
Progression after 3 years	113 (3.2)	43 (3.1)	156 (3.1)
Missing	27 (0.8)	25 (1.8)	52 (1.0)
Overall survival status			
Alive	3,087 (86.5)	1,192 (86.1)	4,279 (86.4)
Death in the first 3 years	394 (11.0)	151 (10.9)	545 (11.0)
Death after 3 years	89 (2.5)	42 (3.0)	131 (2.6)
Location of primary tumor			
Gonadal	3,315 (92.9)	1,278 (92.3)	4,593 (92.7)
Retroperitoneal	123 (3.4)	57 (4.1)	180 (3.6)
Mediastinal	132 (3.7)	50 (3.6)	182 (3.7)
Presence of lung metastases			
No	2,159 (60.5)	852 (61.5)	3,011 (60.8)
Yes	1,411 (39.5)	533 (38.5)	1,944 (39.2)
Presence of NPVM			
No	3,161 (88.5)	1,167 (84.3)	4,328 (87.3)
Yes	409 (11.5)	218 (15.7)	627 (12.7)
Prechemotherapy AFP levels (ng/mL)			
Median	49.8	31.0	42.2
Range	0.0-2,007,390.0	0.0-2,420,000.0	0.0-2,420,000.0
Q1-Q3	6.0-585.6	4.4-525.3	5.0-571.1
Prechemotherapy AFP levels (categorized)			
< 1,000 ng/mL	2,832 (79.3)	1,085 (78.3)	3,917 (79.1)
1,000-10,000 ng/mL	523 (14.6)	195 (14.1)	718 (14.5)
> 10,000 ng/mL	215 (6.0)	105 (7.6)	320 (6.5)
Prechemotherapy HCG levels (U/L)			
Median	43.0	31.0	40.0
Range	0.0-35,000,000.0	0.0-121,23,105.0	0.0-350,00,000.0
Q1-Q3	3.0-1,092.0	2.0-916.0	2.0-1,052.0
Prechemotherapy HCG levels (categorized)			
< 5,000 IU/L	2,952 (82.7)	1,125 (81.2)	4,077 (82.3)

(continued on following page)

TABLE 1. Baseline Characteristics for Patients in the Analysis Set (continued)

Baseline Characteristics	Analysis Set		
	Training (n = 3,570)	Validation (n = 1,385)	Total (N = 4,955)
	n (%)	n (%)	n (%)
5,000-50,000 IU/L	315 (8.8)	128 (9.2)	443 (8.9)
> 50,000 IU/L	303 (8.5)	132 (9.5)	435 (8.8)
Prechemotherapy LDH (×ULN)			
Median	1.1	1.3	1.2
Range	0.0-121.5	0.1-72.0	0.0-121.5
Q1-Q3	0.8-2.2	0.8-2.9	0.8-2.4
Prechemotherapy LDH (categorized)			
≤ 2.5× ULN	2,802 (78.5)	984 (71.0)	3,786 (76.4)
> 2.5× ULN	768 (21.5)	401 (29.0)	1,169 (23.6)
Type of treatment			
Conventional chemotherapy regimen	3,377 (94.6)	1,353 (97.7)	4,730 (95.5)
3× BEP	1,076 (30.1)	582 (42.0)	1,658 (33.5)
3× EP or more	144 (4.0)	23 (1.7)	167 (3.4)
4× BEP or more	1,503 (42.1)	579 (41.8)	2,082 (42.0)
3× VIP or more	20 (0.6)	53 (3.8)	73 (1.5)
3× TBEP or more	194 (5.4)	23 (1.7)	217 (4.4)
3× TIP or more	2 (0.1)	4 (0.3)	6 (0.1)
BEP + VIP and/or TIP (minimum three cycles total)	25 (0.7)	2 (0.1)	27 (0.5)
BEP + EP (minimum three cycles total)	277 (7.8)	12 (0.9)	289 (5.8)
CBOP/BEP	39 (1.1)	64 (4.6)	103 (2.1)
GETUG13 dose dense	0 (0.0)	10 (0.7)	10 (0.2)
BOP/VIP	97 (2.7)	1 (0.1)	98 (2.0)
High-dose chemotherapy regimen ^a	193 (5.4)	32 (2.3)	225 (4.5)
HD-CE	19 (0.5)	25 (1.8)	44 (0.9)
HD-CEC	3 (0.1)	2 (0.1)	5 (0.1)
HD-CEI	2 (0.1)	0 (0.0)	2 (0.0)
HD-VIP	155 (4.3)	4 (0.3)	159 (3.2)
HD-not further specified	14 (0.4)	1 (0.1)	15 (0.3)
Year of treatment			
< 1995	392 (11.0)	61 (4.4)	453 (9.1)
1995-1999	1,020 (28.6)	166 (12.0)	1,186 (23.9)
2000-2004	756 (21.2)	357 (25.8)	1,113 (22.5)
2005-2009	781 (21.9)	474 (34.2)	1,255 (25.3)
2010-2013	621 (17.4)	327 (23.6)	948 (19.1)
Type of study			
Trial	1,192 (33.4)	33 (2.4)	1,225 (24.7)
Cohort	2,378 (66.6)	1,352 (97.6)	3,730 (75.3)

Abbreviations: AFP, alpha-fetoprotein; BEP, bleomycin, etoposide, and cisplatin; BOP, bleomycin, vincristine, and cisplatin; CBOP, carboplatin, bleomycin, vincristine, and cisplatin; CE, carboplatin, and etoposide; CEC, carboplatin, etoposide, and cyclophosphamide; CEI, carboplatin, etoposide, and ifosfamide; EP, etoposide and cisplatin; HCG, human chorionic gonadotropin; HD, high-dose; IGCCCG, International Germ Cell Cancer Collaborative Group; LDH, lactate dehydrogenase; NPVM, nonpulmonary visceral metastases; TBEP, paclitaxel, bleomycin, etoposide, and cisplatin; TIP, paclitaxel, ifosfamide, and cisplatin; ULN, upper limit of normal; VIP, etoposide, ifosfamide, and cisplatin.

^aAny patient who received at least one cycle of high-dose chemotherapy was classified among the high-dose chemotherapy regimen categories (eg, someone receiving 2× BEP + 1× HD-VIP was classified as HD-VIP).

TABLE 2. Update of IGCCCG Survival Probabilities

Original IGCCCG Prognostic Groups	Original IGCCCG Survival Estimates (1997)		Updated Estimates Based on Patients With Nonseminoma With Prechemotherapy IGCCCG Prognostic Groups Available	
	5-Year PFS (95% CI)	5-Year OS (95% CI)	5-Year PFS (95% CI)	5-Year OS (95% CI)
Good	89 (87 to 91)	92 (90 to 94)	90 (89 to 91)	96 (95 to 96)
Intermediate	75 (71 to 79)	80 (76 to 84)	78 (76 to 80)	89 (88 to 91)
Poor	41 (35 to 47)	48 (42 to 54)	54 (52 to 56)	67 (65 to 69)

Abbreviations: IGCCCG, International Germ Cell Cancer Collaborative Group; OS, overall survival; PFS, progression-free survival.

prognostic variables. Graphical assessment of linearity (Data Supplement) showed that the effect of age on progression was linear, whereas the effect of AFP and hCG was log-linear (log-2 transformation).

The ULN of LDH proved to have a relationship with PFS akin to a three-step function with cut points located close to 1× ULN and 2.5× ULN (Data Supplement). As such, it was categorized, using the single threshold of 2.5× ULN, based on clinical relevance.

All candidate interactions were included in the model (global test $P < .0001$).

The final IGCCCG Update model is presented in Table 3. Consistent with the original classification, the presence of NPVM (hazard ratio [HR] = 6.61 [95% CI, 4.62 to 9.46]) and a mediastinal primary tumor (HR = 2.68 [95% CI, 2.04 to 3.53]) were the most important prognostic factors. The IGCCCG Update model also highlights two new adverse prognostic variables. Every decade-of-life increase translates into a 25% increase in the risk of progression. The presence of lung metastases translates into a 62% increase

in the risk of progression compared with patients without lung metastases. The final IGCCCG Update model was robust across year of treatment, geographical region, and trial versus nontrial patients (data not shown).

Nomograms for Calculating Prognosis

For improved readability, the graphical representation of the final IGCCCG Update model is presented in two separate nomograms: one for patients with NPVM and the other for patients without NPVM. These are shown in Figure 3 and made available as a web application (<https://www.eortc.org/IGCCCG-Update>).¹⁴

Performance of the IGCCCG Update Prognostic Model

The IBS is a measure of prediction error ranging from 0 (perfect accuracy) to 1 (totally inaccurate). The IBS in the training set was 0.10.

The time-dependent 3-year AUC was 0.76 (95% CI, 0.73 to 0.78), showing the ability of the prognostic score to accurately rank patients' risk of progression based on their baseline prognostic factors (Data Supplement). The final

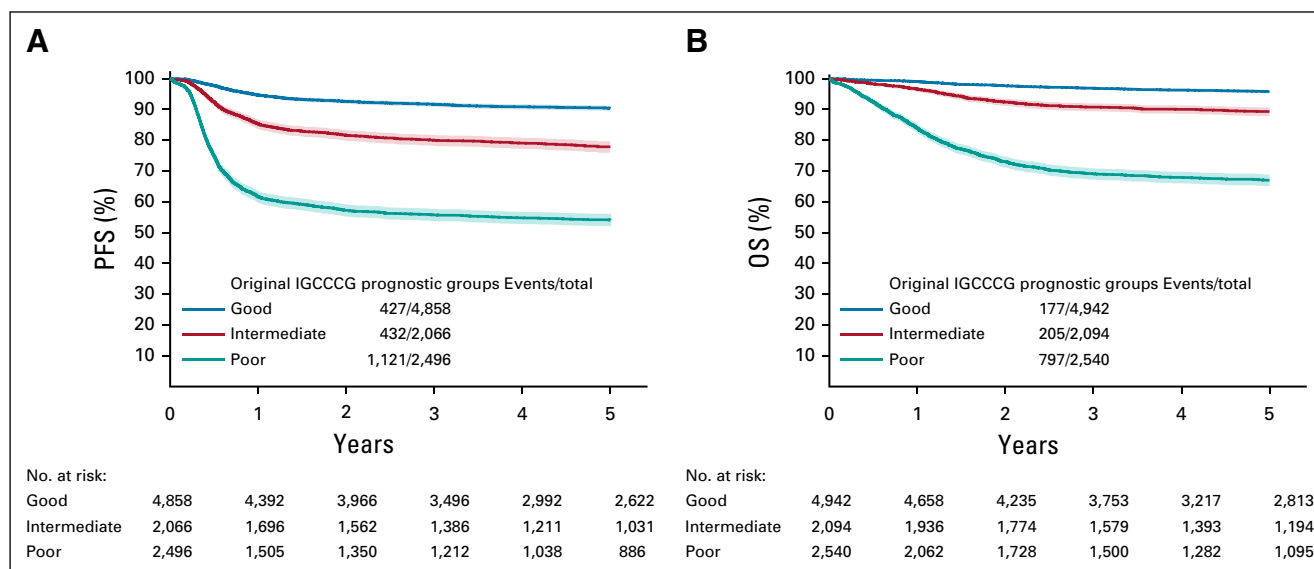


FIG 2. Survival probabilities and 95% CI according to original IGCCCG prognostic groups for (A) PFS and (B) OS. IGCCCG, International Germ Cell Cancer Collaborative Group; OS, overall survival; PFS, progression-free survival.

TABLE 3. Hazard Ratios of the Final Prognostic Model

Variables	Values of Interacting Variables Used for Computation	Hazard Ratio	95% CI
Age (10 years increase)		1.25	1.15 to 1.36
Mediastinal primary		2.68	2.04 to 3.53
Presence of lung metastases		1.62	1.36 to 1.92
Presence of NPVM	AFP levels ≤ 30 ng/mL	6.61	4.62 to 9.46
	HCG levels ≤ 5 U/L		
	LDH ≤ 2.5× ULN		
LDH > 2.5× ULN	Absence of NPVM	1.46	1.18 to 1.81
	Presence of NPVM	1.01	0.74 to 1.36
Doubling of AFP levels (for values > 30 ng/mL)	Absence of NPVM	1.12	1.09 to 1.16
	Presence of NPVM	1.02	0.98 to 1.06
Doubling of HCG levels (for values > 5 U/L)	Absence of NPVM	1.07	1.05 to 1.09
	Presence of NPVM	1.02	0.99 to 1.04

Abbreviations: AFP, alpha-fetoprotein, HCG, human chorionic gonadotropin, LDH, lactate dehydrogenase, NPVM, nonpulmonary visceral metastases; ULN, upper limit of normal.

IGCCCG Update model also demonstrated excellent calibration to predict 3-year PFS in the training set (Data Supplement).

Independent Validation

In the validation set, the IGCCCG Update model had an IBS of 0.11, a 3-year AUC of 0.74 (95% CI, 0.70 to 0.77), and equally good calibration (Data Supplement).

DISCUSSION

The international IGCCCG Update Consortium database is the largest source of information on metastatic GCT worldwide. In this report, we analyzed the data of 9,728 patients with metastatic NSGCT treated between 1990 and 2013. The majority of patients in the database were treated according to international guidelines with three cycles of bleomycin, etoposide, and cisplatin or four cycles of EP in patients with good prognosis and four cycles of bleomycin, etoposide, and cisplatin or equivalent conventional-dose regimens in patients with intermediate and poor prognosis.^{15,16} Only a minority of patients received dose-intensified regimen such as dose-dense or high-dose chemotherapy.¹⁷⁻²⁰

Compared with the results of the original IGCCCG cohort, in this modern series, patients with NSGCT from all prognostic groups experienced substantially improved OS. The differences were most striking in patients with poor prognosis GCT, in whom OS and PFS improved by 19% and 13%, respectively. By contrast, PFS among patients with good and intermediate prognosis NSGCT was only slightly better than that in the original IGCCCG report. This suggests that improved first-line treatment (chemotherapy and surgery) might have had the greatest impact on patients with poor prognosis NSGCT, whereas all prognostic groups benefitted from more effective salvage strategies.

This large multicenter database capturing modern type treatments over a period of more than 20 years confirms previous smaller series that also reported better outcomes in more recently treated patients with NSGCT.^{2,5,19,21} These improvements might have resulted from stage migration because of earlier diagnosis and better diagnostic tools, improved supportive care, superiority of cisplatin- and etoposide-based first-line treatment over other combinations, use of upfront dose-intensified regimens, more stringent use and higher quality of postchemotherapy surgery, better salvage strategies in nonresponding or relapsing patients, more stringent guideline adherence, centralization of care at experienced expert centers, or a combination of these factors.^{2-7,16} Additionally, the availability of the original IGCCCG classification itself helped to resolve the confusion from heterogenous previous classifications and to guide appropriate treatment duration.²² Given 5-year PFS and OS survival probabilities of 78% (95% CI, 77 to 79) and 87% (95% CI, 86 to 87) across all prognostic groups, metastatic NSGCT is, together with seminoma, the most curable metastatic solid cancer in males.

An important finding of the present analysis is that the original IGCCCG classification as published in 1997 still distinguishes three prognostic groups among patients with metastatic NSGCT with significantly different PFS and OS probabilities. However, our model highlights the considerable heterogeneity in prognosis within the original IGCCCG groups, as shown in the Data Supplement. Moreover, we identified increasing age and the presence of lung metastases as additional adverse prognostic factors that could explain some of these heterogeneities. Additionally, the strong negative prognostic impact of marker elevation seen in patients without NPVM becomes much less relevant when NPVM is present.

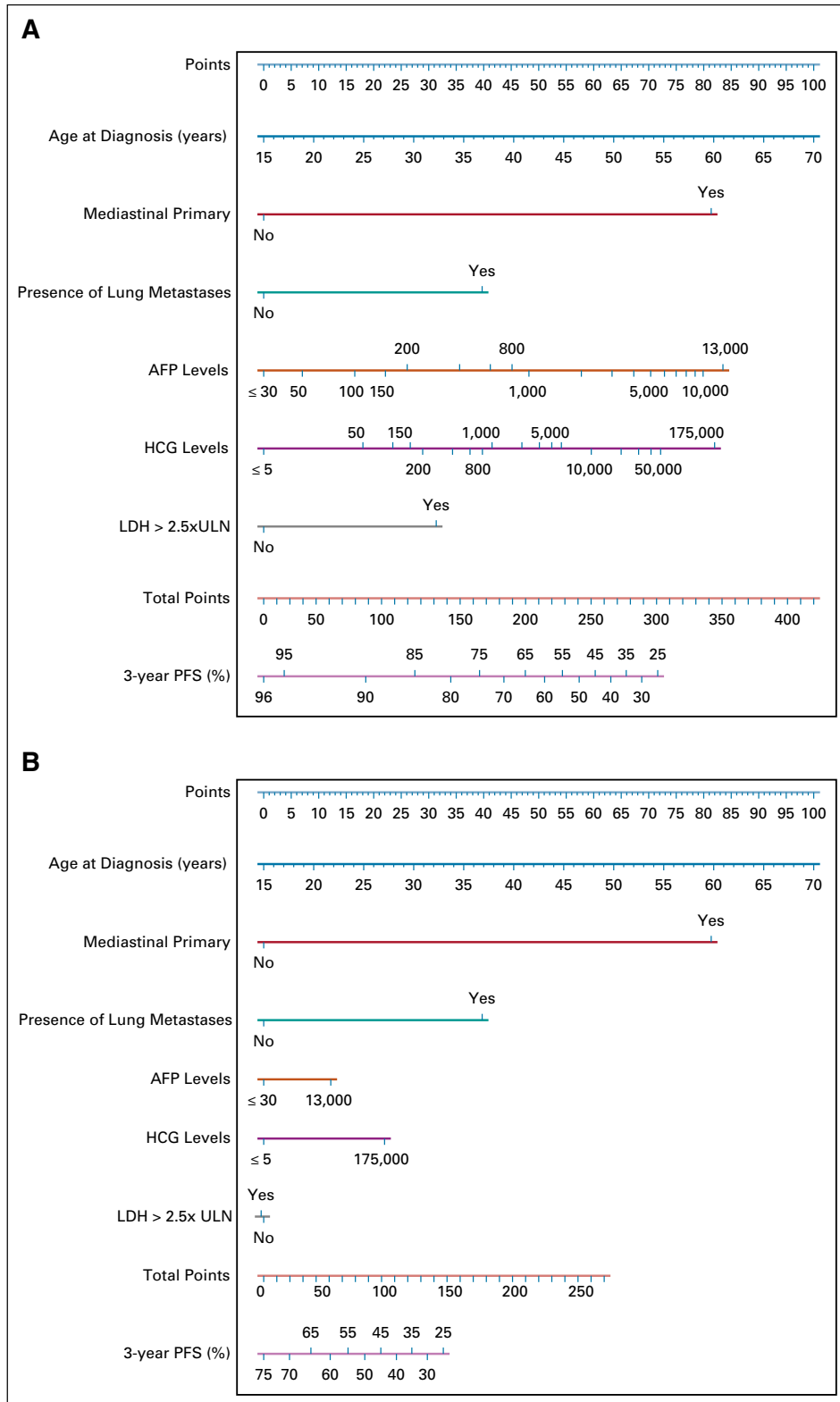


FIG 3. Nomograms of the final prognostic model for patients (A) without NPVM and (B) with NPVM. The extreme values of AFP and HCG markers on the nomograms were truncated to the rounded 95% percentile of the training set (13,000 ng/mL for AFP, 175,000 U/L for HCG). Predicted 3-year PFS below 25% are not shown, as it corresponds to a combination of baseline prognostic factors rarely seen in the training set. AFP, alpha-fetoprotein; HCG, human chorionic gonadotropin; LDH, lactate dehydrogenase; NPVM, nonpulmonary visceral metastases; PFS, progression-free survival; ULN, upper limit of normal.

The original IGCCCG classification used three categories of LDH elevation. Elevations above 10× ULN were infrequent in our series. We found 2.5× ULN to be the most clinically relevant cutoff value having a high specificity.

Our findings confirm reports of smaller studies that also suggested age and the presence of lung metastases as adverse prognostic factors.^{5,23,24} In particular, the new IGCCCG Update model shows that the negative prognostic impact of age can, in some cases, be more important than any other prognostic factor, with the exception of the presence of NPVM and primary mediastinal GCT. The reasons for the adverse prognosis with advanced age are unknown and seem to be not related to an increased treatment-related mortality. In our series, there was no evidence that patients' age influenced the choice of treatment. Dose reductions or treatment delays may be responsible for the adverse effect of age, but these particular data were not collected. Focusing on the treatment of older patients with germ cell tumor should therefore become a priority for further prospective studies.

Inadequate tumor marker decline is another validated adverse prognostic factor that identified patients with poor prognosis NSGCT who benefitted from treatment intensification.¹⁹ However, postchemotherapy marker decline was not captured in sufficient numbers in the IGCCCG Update database to be incorporated in the multivariate IGCCCG Update model.

As available trial data used the original IGCCCG classification for treatment stratification, we suggest that this

classification remains the reference standard for treatment decisions in daily practice. However, a nomogram adding the two new variables, presence of lung metastases and age, as well as a new LDH cutoff of 2.5× ULN instead of 1.5× ULN allows for an improved and more granular individual prognostic assessment in patients with first-line metastatic NSGCT. Although this tool appears more complex than the original IGCCCG classification, it can be easily accessed via a web-based application (<https://www.eortc.org/IGCCCG-Update>).¹⁴ In future trials, patients with a particularly favorable prognosis in the nomogram may be subjected to de-escalation strategies to further reduce treatment burden in patients likely to be cured. In contrast, trials evaluating dose-escalation strategies should be pursued in patients with the worst prognosis according to the new IGCCCG Update model.

In conclusion, OS of patients with first-line metastatic NSGCT has improved over the last 20 years. However, despite these improvements, more than 30% of patients with poor prognostic features may still die of their disease. The original IGCCCG classification retains its relevance as a reference for treatment decisions in daily practice. The new IGCCCG Update model includes age and lung metastases as additional adverse prognostic factors and uses a single cutoff of LDH at 2.5× ULN. A web-based calculator (<https://www.eortc.org/IGCCCG-Update>) based on the results of the IGCCCG Update analysis allows improved and more granular individual prognostic assessment¹⁴ and can help to shape strategies for future trials.

AFFILIATIONS

¹Oncology Institute of Southern Switzerland (IOSI), Bellinzona, Switzerland

²Universita della Svizzera Italiana, Lugano, Switzerland

³University of Manchester, Manchester, United Kingdom

⁴European Organisation for Research and Treatment of Cancer, Brussels, Belgium

⁵Rigshospitalet, Copenhagen University Hospital, Copenhagen, Denmark

⁶Erasmus MC Cancer Institute, Rotterdam, the Netherlands

⁷Indiana University Melvin and Bren Simon Cancer Center, Indianapolis, IN

⁸N.N. Blokhin Russian Cancer Research Center, Moscow, Russian Federation

⁹Research Institute of Oncology at Bashkir State Medical University, Ufa, Russian Federation

¹⁰Institut Gustave Roussy, University of Paris Saclay, Villejuif, France

¹¹Department of Oncology, Skåne University Hospital, Lund, Sweden

¹²University Medical Center Groningen, Groningen, the Netherlands

¹³Istituto Scientifico Romagnolo per lo Studio e la Cura dei Tumori (IRST) IRCCS, Meldola, Italy and the Italian Germ Cell Cancer Group (IGG)

¹⁴Medical Research Council Clinical Trials Unit, University College London (UCL), London, United Kingdom

¹⁵Division of Medical Oncology and Hematology, Princess Margaret Cancer Centre, University Health Network, Toronto, Ontario, Canada

¹⁶The Cancer Clinic, St Olavs University Hospital and Department of Clinical and Molecular Medicine, The Norwegian University of Science and Technology, Trondheim, Norway

¹⁷Institute of Cancer Research, Sutton, United Kingdom

¹⁸Fondazione IRCCS Istituto Nazionale dei Tumori, Milan, Italy. Current Affiliation: Vita-Salute San Raffaele University and IRCCS San Raffaele Hospital and Scientific Institute, Milan, Italy

¹⁹Department of Medical Oncology, Dana-Farber Cancer Institute, Boston, MA

²⁰Catalan Institute of Oncology, IDIBELL Institute of Research, University of Barcelona, Barcelona, Spain

²¹Tom Baker Cancer Centre, University of Calgary, Calgary, Alberta, Canada

²²Department of Medical Oncology and Hematology, University Hospital Zurich, Zurich, Switzerland

²³Department of Urology, University Hospital Dusseldorf, Dusseldorf, Germany

²⁴2nd Department of Oncology, Faculty of Medicine, Comenius University and National Cancer Institute, Bratislava, Slovakia

²⁵Division of Medical Oncology, Western University and London Health Sciences Centre, London, Ontario, Canada

²⁶Australian and New Zealand Urogenital and Prostate Cancer Trials Group, Sydney, Australia

²⁷Memorial Sloan Kettering Cancer Center, New York, NY

²⁸Weill Medical College of Cornell University, New York, NY

²⁹Division of Oncology, Department of Internal Medicine, Medical University of Graz, Graz, Austria

³⁰Department of Hematology and Oncology, Red Cross Hospital, University of Munich, Munich, Germany

³¹Department of Oncology, Hematology and BMT with Section Pneumology, University Medical Center Hamburg-Eppendorf, Hamburg, Germany

³²Department of Oncology, Oslo University Hospital, Oslo, Norway

³³University of Zurich, Zurich, Switzerland

³⁴St Bartholomew's Hospital, London, United Kingdom

³⁵University of Pennsylvania, Philadelphia, PA

³⁶Medical Oncology, San Camillo Forlanini Hospital, Rome, Italy. Current Affiliation: Englander Institute for Precision Medicine, Weill Cornell Medicine, New York-Presbyterian, NY

³⁷Department of Urology, Uro-Oncology, Robot-Assisted and Specialized Urologic Surgery, University Hospital Cologne, Cologne, Germany

³⁸University Department of Medical Oncology, Inselspital, University Hospital, University of Bern, Bern, Switzerland

CORRESPONDING AUTHOR

Silke Gillessen, MD, Oncology Institute of Southern Switzerland (IOSI), Ospedale San Giovanni, Via Gallino 12, CH-6500 Bellinzona, Switzerland; e-mail: Silke.GillessenSommer@eoc.ch.

PRIOR PRESENTATION

Presented at the 2019 ESMO Conference in Barcelona, Spain.

SUPPORT

Supported by grants and donations from the EORTC Genito-urinary Cancer Group, the Swiss Cancer Foundation and Movember.

AUTHORS' DISCLOSURES OF POTENTIAL CONFLICTS OF INTEREST

Disclosures provided by the authors are available with this article at DOI <https://doi.org/10.1200/JCO.20.03296>.

REFERENCES

- Mead GM: International Germ Cell Consensus Classification: A prognostic factor-based staging system for metastatic germ cell cancers. *J Clin Oncol* 15: 594-603, 1997
- Fankhauser CD, Sander S, Roth L, et al: Improved survival in metastatic germ-cell cancer. *Ann Oncol* 29:347-351, 2018
- Gilligan T, Lin DW, Aggarwal R, et al: Testicular cancer, version 2.2020. *J Natl Compr Cancer Netw* 17:1529-1554, 2019
- Collette L, Sylvester RJ, Stenning SP, et al: Impact of the treating institution on survival of patients with "poor- prognosis" metastatic nonseminoma. *J Natl Cancer Inst* 91:839-846, 1999
- Kier MG, Lauritsen J, Mortensen MS, et al: Prognostic factors and treatment results after bleomycin, etoposide, and cisplatin in germ cell cancer: A population-based study. *Eur Urol* 71:290-298, 2017
- Tandstad T, Kollmannsberger CK, Roth BJ, et al: Practice makes perfect: The rest of the story in testicular cancer as a model curable neoplasm. *J Clin Oncol* 35: 3525-3528, 2017
- Honecker F, Aparicio J, Berney D, et al: ESMO consensus conference on testicular germ cell cancer: Diagnosis, treatment and follow-up. *Ann Oncol* 29: 1658-1686, 2018
- Necchi A, Ross JS, Spiess PE: Improving the prognostic ability for personalized therapeutic approaches in nonseminomatous germ cell tumors. *J Clin Oncol* 37: 2314-2316, 2019
- Lachin JM: *Biostatistical Methods: The Assessment of Relative Risks* (ed 4). Hoboken, NJ, Wiley & Sons, 2011
- Collett D: *Modelling Survival Data in Medical Research* (ed 3). New York, Chapman and Hall/CRC, 2015
- Royston P, Parmar MKB: Flexible parametric proportional-hazards and proportional-odds models for censored survival data, with application to prognostic modelling and estimation of treatment effects. *Stat Med* 21:2175-2197, 2002
- Mogensen UB, Ishwaran H, Gerds TA: Evaluating random forests for survival analysis using prediction error curves. *J Stat Softw* 50:1-23, 2012
- Heagerty PJ, Zheng Y: Survival model predictive accuracy and ROC curves. *Biometrics* 61:92-105, 2005
- IGCCCG Update calculator. <https://www.eortc.org/IGCCCG-Update>
- Culine S, Kerbrat P, Kramar A, et al: Refining the optimal chemotherapy regimen for good-risk metastatic nonseminomatous germ-cell tumors: A randomized trial of the Genito-Urinary Group of the French Federation of Cancer Centers (GETUG T93BP). *Ann Oncol* 18:917-924, 2007
- Williams SD, Birch R, Einhorn LH, et al: Treatment of disseminated germ-cell tumors with cisplatin, bleomycin, and either vinblastine or etoposide. *N Engl J Med* 316:1435-1440, 1987

AUTHOR CONTRIBUTIONS

Conception and design: Silke Gillessen, Laurence Collette, Gedske Daugaard, Ronald de Wit, Costantine Albany, Karim Fizazi, Torgrim Tandstad, Robert A. Huddart, Christopher J. Sweeney, Jörg Beyer

Financial support: Silke Gillessen, Jörg Beyer

Administrative Support: Silke Gillessen, Nicolas Sauv , Laurence Collette, J rg Beyer

Provision of study materials or patients: Gedske Daugaard, Ronald de Wit, Karim Fizazi, Olof Stahl, Jourik A. Gietema, Fay H. Cafferty, Torgrim Tandstad, Robert A. Huddart, Christopher J. Sweeney, Xavier Garcia-Del-Muro, Daniel Y. C. Heng, Anja Lorch, Eric Winquist, Peter Grimison, Darren R. Feldman, Marcus Hentrich, Carsten Bokemeyer, Helene Negaard, Christian Fankhauser, Jonathan Shamash, David J. Vaughn, Axel Heidenreich, J rg Beyer

Collection and assembly of data: Silke Gillessen, Nicolas Sauv , Laurence Collette, Ronald de Wit, Costantine Albany, Alexey Tryakin, Karim Fizazi, Olof Stahl, Jourik A. Gietema, Ugo De Giorgi, Fay H. Cafferty, Aaron R. Hansen, Torgrim Tandstad, Robert A. Huddart, Andrea Necchi, Christopher J. Sweeney, Xavier Garcia-Del-Muro, Daniel Y. C. Heng, Anja Lorch, Michal Chovanec, Eric Winquist, Peter Grimison, Darren R. Feldman, Angelika Terbuch, Carsten Bokemeyer, Helene Negaard, Christian Fankhauser, Jonathan Shamash, David J. Vaughn, Cora N. Sternberg, Axel Heidenreich, J rg Beyer

Data analysis and interpretation: Silke Gillessen, Nicolas Sauv , Laurence Collette, Ronald de Wit, Costantine Albany, Alexey Tryakin, Karim Fizazi, Ugo De Giorgi, Torgrim Tandstad, Robert A. Huddart, Christopher J. Sweeney, Xavier Garcia-Del-Muro, Daniel Y. C. Heng, Darren R. Feldman, Carsten Bokemeyer, Cora N. Sternberg, J rg Beyer

Manuscript writing: All authors

Final approval of manuscript: All authors

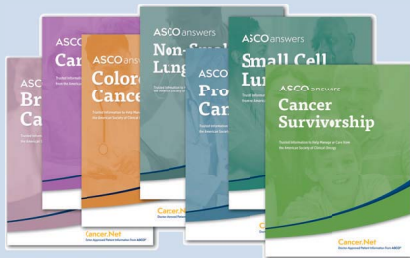
Accountable for all aspects of the work: All authors

ACKNOWLEDGMENT

We sincerely thank Nicolas Sauv  who developed the web-based IGCCCG update calculator.

17. Daugaard G, Skoneczna I, Aass N, et al: A randomized phase III study comparing standard dose BEP with sequential high-dose cisplatin, etoposide, and ifosfamide (VIP) plus stem-cell support in males with poor-prognosis germ-cell cancer. An Intergroup Study of EORTC, GTCSG, and Grupo Germinal (EO). *Ann Oncol* 22:1054-1061, 2011
18. Olofsson SE, Tandstad T, Jerkeman M, et al: Population-based study of treatment guided by tumor marker decline in patients with metastatic nonseminomatous germ cell tumor: A report from the Swedish-Norwegian testicular cancer group. *J Clin Oncol* 29:2032-2039, 2011
19. Fizazi K, Pagliaro L, Laplanche A, et al: Personalised chemotherapy based on tumour marker decline in poor prognosis germ-cell tumours (GETUG 13): A phase 3, multicentre, randomised trial. *Lancet Oncol* 15:1442-1450, 2014
20. Huddart RA, Gabe R, Cafferty FH, et al: A randomised phase 2 trial of intensive induction chemotherapy (CBOP/BEP) and standard BEP in poor-prognosis germ cell tumours (MRC TE23, CRUK 05/014, ISRCTN 53643604). *Eur Urol* 67:534-543, 2015
21. SonneveldDJA, HoekstraHJ, Van Der GraafWTA, et al: Improved long term survival of patients with metastatic nonseminomatous testicular germ cell carcinoma in relation to prognostic classification systems during the cisplatin era. *Cancer* 91:1304-1315, 2001
22. Beyer J: Prognostic factors in metastatic germ-cell cancer. *Andrology* 7:475-478, 2019
23. Adra N, Althouse SK, Liu H, et al: Prognostic factors in patients with poor-risk germ-cell tumors: A retrospective analysis of the Indiana University experience from 1990 to 2014. *Ann Oncol* 27:875-879, 2016
24. Necchi A, Pond GR, Nicolai N, et al: A suggested prognostic reclassification of intermediate and poor-risk nonseminomatous germ cell tumors. *Clin Genitourin Cancer* 15:306-312.e3, 2017

ASCO Answers – The Ideal Take-Home Patient Education Resource



ASCO has created helpful resources to support your patients and their caregivers. **ASCO Answers** patient education materials provide trusted information on cancer types, diagnosis, treatment, side effects, and coping in three convenient formats: fact sheets, topic-specific booklets, and comprehensive, patient-friendly guides.

ASCO Answers can be purchased from the ASCO Store at **cancer.net/estore**. Free domestic shipping. Members save 20%.

Cancer.Net[™]
 Doctor-Approved Patient Information from ASCO®

AUTHORS' DISCLOSURES OF POTENTIAL CONFLICTS OF INTEREST**Predicting Outcomes in Men With Metastatic Nonseminomatous Germ Cell Tumors (NSGCT): Results From the IGCCCG Update Consortium**

The following represents disclosure information provided by authors of this manuscript. All relationships are considered compensated unless otherwise noted. Relationships are self-held unless noted. I = Immediate Family Member, Inst = My Institution. Relationships may not relate to the subject matter of this manuscript. For more information about ASCO's conflict of interest policy, please refer to www.asco.org/rwc or ascopubs.org/jco/authors/author-center.

Open Payments is a public database containing information reported by companies about payments made to US-licensed physicians ([Open Payments](#)).

Silke Gillessen

Consulting or Advisory Role: Astellas Pharma, Janssen, Bayer, Orion Pharma GmbH, Tolero Pharmaceuticals, MSD Oncology, Roche, Amgen, Pfizer

Speakers' Bureau: Janssen-Cilag

Patents, Royalties, Other Intellectual Property: Method for biomarker (WO 3752009138392 A1)

Travel, Accommodations, Expenses: ProteoMedix

Other Relationship: ProteoMediX, Aranda Pharma

Gedske Daugaard

Consulting or Advisory Role: Sanofi/Aventis, Astellas Pharma, Bayer, MSD Oncology, Bristol-Myers Squibb/Pfizer

Travel, Accommodations, Expenses: Astellas Pharma

Ronald De Wit

Honoraria: Sanofi, Merck Sharp and Dohme

Consulting or Advisory Role: Sanofi, Merck Sharp and Dohme, Janssen, Bayer, Astellas Pharma

Research Funding: Sanofi, Bayer

Travel, Accommodations, Expenses: Bayer

Costantine Albany

Stock and Other Ownership Interests: Advaxis

Honoraria: Sanofi, AstraZeneca, Seattle Genetics

Consulting or Advisory Role: Seattle Genetics, AstraZeneca/MedImmune

Speakers' Bureau: Sanofi

Research Funding: Astex Pharmaceuticals, Merck, Bristol-Myers Squibb, Lilly, Bayer

Travel, Accommodations, Expenses: Sanofi

Alexey Tryakin

Consulting or Advisory Role: BioCad, Roche/Genentech, Bristol-Myers Squibb, Eisai, Merck Sharp and Dohme

Speakers' Bureau: Bayer Health, BioCad, Lilly, Merck Serono, Sanofi, Amgen, Bristol-Myers Squibb, Eisai, Merck Sharp and Dohme

Travel, Accommodations, Expenses: Novartis, BioCad, Bayer, Veropharm, Sanofi

Karim Fizazi

Honoraria: Janssen, Sanofi, Astellas Pharma, Bayer

Consulting or Advisory Role: Janssen Oncology, Bayer, Astellas Pharma, Sanofi, Orion Pharma GmbH, Curevac, AstraZeneca, ESSA, Amgen, Bristol-Myers Squibb, Clovis Oncology

Travel, Accommodations, Expenses: Janssen, MSD

Olof Stahl

Honoraria: Bayer

Jourik Gietema

Research Funding: Roche/Genentech, Abbvie, Siemens

Ugo De Giorgi

Consulting or Advisory Role: Pfizer, Janssen, Astellas Pharma, Sanofi, Bristol-Myers Squibb, Bayer, Ipsen, Merck, MSD, PharmaMar, Novartis

Research Funding: Sanofi, AstraZeneca, Roche

Travel, Accommodations, Expenses: Bristol-Myers Squibb, Ipsen, Janssen, Pfizer, Roche

Aaron Hansen

Consulting or Advisory Role: Merck, GlaxoSmithKline, Bristol-Myers Squibb, Eisai

Research Funding: Karyopharm Therapeutics, Merck, Bristol-Myers Squibb, Boehringer Ingelheim, GlaxoSmithKline, Roche/Genentech, Janssen, AstraZeneca/MedImmune, Astellas Pharma, Macrogenics

Robert Huddart

Employment: Aspen Parkside Hospital

Leadership: Cancer Clinic London Limited liability partnership

Honoraria: Janssen Oncology

Consulting or Advisory Role: Bristol-Myers Squibb, Roche, Merck Sharp and Dohme, Janssen Oncology, Nektar, Bayer

Speakers' Bureau: Roche, MSD, Roche

Research Funding: Merck Sharp and Dohme, Roche, Bristol-Myers Squibb, Janssen

Patents, Royalties, Other Intellectual Property: Royalties for drug discovery from Janssen

Travel, Accommodations, Expenses: Janssen Oncology, Roche/Genentech, MSD Oncology, Nektar

Andrea Necchi

Employment: Bayer

Stock and Other Ownership Interests: Bayer

Honoraria: Roche, Merck, AstraZeneca, Janssen, Foundation Medicine, Bristol-Myers Squibb

Consulting or Advisory Role: Merck Sharp and Dohme, Roche, Bayer, AstraZeneca, Clovis Oncology, Janssen, Incyte, Seattle Genetics/Astellas, Bristol-Myers Squibb, Rainier Therapeutics, GlaxoSmithKline, Ferring

Research Funding: Merck Sharp and Dohme, AstraZeneca, Ipsen

Travel, Accommodations, Expenses: Roche, Merck Sharp and Dohme, AstraZeneca, Janssen, Rainier Therapeutics

Other Relationship: Bayer

Christopher Sweeney

Stock and Other Ownership Interests: Leuchemix

Consulting or Advisory Role: Sanofi, Janssen Biotech, Astellas Pharma, Bayer, Genentech/Roche, AstraZeneca, Pfizer, Amgen, Celgene, Lilly

Research Funding: Janssen Biotech, Astellas Pharma, Sanofi, Bayer, Dendreon, Pfizer

Patents, Royalties, Other Intellectual Property: Leuchemix, Parthenolide, Dimethylaminoparthenolide. Exelixis: Abiraterone plus cabozantinib combination

Xavier Garcia Del Muro

Consulting or Advisory Role: Pfizer, Bristol-Myers Squibb, Ipsen, Roche, Lilly, PharmaMar, EUSA Pharma, GlaxoSmithKline

Speakers' Bureau: Pfizer, Bristol-Myers Squibb, Astellas Pharma, Eisai

Research Funding: AstraZeneca

Travel, Accommodations, Expenses: Pfizer, Roche

Daniel Heng

Consulting or Advisory Role: Pfizer, Novartis, Bristol-Myers Squibb, Janssen, Astellas Pharma, Ipsen, Eisai, Merck

Research Funding: Pfizer, Novartis, Exelixis, Bristol-Myers Squibb, Ipsen

Anja Lorch

Honoraria: MSD Oncology, Merck, MSD

Consulting or Advisory Role: Bristol-Myers Squibb, Novartis, AstraZeneca, Roche, MSD Oncology, Janssen Oncology, Ipsen, Merck, Pfizer

Travel, Accommodations, Expenses: Ipsen, AstraZeneca

Eric Winquist

Honoraria: Merck, Bayer, Eisai, Amgen, Roche

Research Funding: Roche/Genentech, Merck, Pfizer, Eisai, Ayala Pharmaceuticals

Peter Grimison

Research Funding: Tilray, Pfizer, MSD, Gilead Sciences, Boston Biomedical, Tigermed, Halozyme, Specialised Therapeutics, Medimmune, Pfizer, ASLAN Pharmaceuticals, Genentech, Eisai, Five Prime Therapeutics, QED Therapeutics, Janssen-Cilag

Darren Feldman

Research Funding: Novartis, Seattle Genetics, Decibel Therapeutics, Astellas Pharma

Other Relationship: UpToDate

Angelika Terbuch

Research Funding: Roche, AstraZeneca, MSD, Bristol-Myers Squibb

Marcus Hentrich

Consulting or Advisory Role: Amgen, Janssen-Cilag, Sanofi, Hexal, Jazz Pharmaceuticals, Takeda

Speakers' Bureau: Amgen, Janssen-Cilag, Sanofi, Takeda, Bristol-Myers Squibb, Gilead Sciences

Travel, Accommodations, Expenses: Celgene, Janssen-Cilag, Takeda

Carsten Bokemeyer

Honoraria: Merck KGaA, Sanofi, Roche, Bayer, Bristol-Myers Squibb, AstraZeneca, Merck Sharp and Dohme

Consulting or Advisory Role: Lilly/ImClone, Merck Serono, Sanofi, Bayer Schering Pharma, Merck Sharp and Dohme, GSO, AOK Health Insurance

Research Funding: Abbvie, ADC Therapeutics, Agile Therapeutics, Alexion Pharmaceuticals, Amgen, Apellis Pharmaceuticals, Astellas Pharma, AstraZeneca, Bayer, BerGenBio, Blueprint Medicines, Bristol-Myers Squibb, Boehringer Ingelheim, Celgene, Daiichi Sankyo, Eisai, Gilead Sciences, Glycotope GmbH, GlaxoSmithKline, Incyte, iOMEDICO, Isofol Medical, Janssen-Cilag, Karyopharm Therapeutics, Lilly, Millennium, MSD, Nektar, Novartis, Rafael Pharmaceuticals, Roche, Springworks Therapeutics, Taiho Pharmaceutical

Travel, Accommodations, Expenses: Merck Serono, Sanofi, Pfizer, Bristol-Myers Squibb

Jonathan Shamash

Speakers' Bureau: Pfizer/EMD Serono

David Vaughn

Research Funding: Merck Sharp and Dohme, Roche/Genentech, Astellas Pharma

Cora Sternberg

Consulting or Advisory Role: Bayer, MSD, Pfizer, Roche, Incyte, AstraZeneca, Merck, Medscape, UroToday, Astellas Pharma, Genzyme, Immunomedics, Foundation Medicine

Axel Heidenreich

Honoraria: Amgen, Astellas Pharma, Bayer, Ferring, Ipsen, Janssen-Cilag, Sanofi, Takeda

Consulting or Advisory Role: Astellas Pharma, Bayer, Janssen-Cilag, Clovis Oncology, BMS Global, AstraZeneca, MSD Oncology

Speakers' Bureau: Amgen, Astellas Pharma, Bayer, Ipsen, Johnson and Johnson, Sanofi, Takeda, Pfizer

Research Funding: Astellas Pharma, Bayer, Sanofi, Bristol-Myers Squibb

Joerg Beyer

Honoraria: Roche, Janssen Oncology, AstraZeneca, Astellas Pharma, Bayer, Ipsen

No other potential conflicts of interest were reported.

APPENDIX

We thank the following centers, research groups, and cancer registries who contributed data to the International Germ Cell Cancer Collaborative Group Update Consortium data warehouse:

Australia

Australian and New Zealand Urogenital and Prostate Cancer Trials Group, Sydney and investigators of the P3BEP study (ACTRN12613000496718) and New Zealand Urogenital and Prostate Good prognosis GCT study (ACTRN12605000142639) trials;

Canada

Princess Margaret Cancer Centre, University Health Network, Toronto, Ontario; Indiana Tom Baker Cancer Centre, University of Calgary, Calgary, Alberta; Western University and London Health Sciences Centre, London, Ontario.

Europe

Belgium The European Organisation for Research and Treatment of Cancer (EORTC) Genito-Urinary Cancer Group and investigators of the EORTC 30895, EORTC 30941, EORTC 30974, and EORTC 30983 trials; The EORTC Headquarters, Brussels.

Austria. Medical University of Graz.

Denmark. Rigshospitalet Copenhagen and contributors to the Danish Germ Cell Cancer Registry.

France. Institut Gustave Roussy, University of Paris Saclay, Villejuif; Groupe d'Étude des Tumeurs Uro-Génitales (GETUG) and investigators of the GETUG-13, S99 and T93 trials.

Germany. Universitätsklinikum Düsseldorf, Düsseldorf; Universitätsklinikum Köln/Köln University Hospital, Köln; The Red Cross, University of Munich, Munich; University Medical Center Hamburg-Eppendorf, Hamburg; The German Testicular Cancer Study Group and investigators of the HDVIP protocol (DOI: 10.1200/JCO.2003.09035).

Italy. San Camillo Forlanini Hospital, Rome; Fondazione IRCCS Istituto Nazionale dei Tumori, Milano; The Italian Germ Cell Cancer Group (IGG).

Norway and Sweden. The Norwegian University of Science and Technology, Trondheim, Norway; Oslo University Hospital, Oslo, Norway; Skåne University Hospital, Lund, Sweden; The Swedish and Norwegian Testicular Cancer Group (SWENOTECA).

Slovakia. National Cancer Institute, Bratislava.

Spain. Hospital Universitario Morales Meseguer-IMIB, Murcia; Universidad Católica San Antonio de Murcia (UCAM), Murcia; Institut Català d'Oncologia, Barcelona; The Spanish Germ Cell Cancer Group and contributors of the SGCCCG registry and of the "chemotherapy versus radiotherapy study" (DOI: 10.1200/JCO.2007.15.9103)

Switzerland. University of Zürich, Zürich.

The Netherlands. University Medical Center Groningen, Groningen.

The United Kingdom

The Institute of Cancer Research, Sutton; The Medical Research Council Testicular Cancer Study Group and investigators of the MRC TE13 and TE20 studies; St Bartholomew's Hospital, London.

Russia

N.N. Blokhin Russian Cancer Research Center, Moscow, Russian Federation.

The United States of America

Indiana University, Melvin and Bren Simon Cancer Center, Indianapolis, Indiana; Dana-Farber Cancer Institute—Harvard Medical School, Boston, Massachusetts; University of Pennsylvania, Perelman Center for Advanced Medicine, Philadelphia, Pennsylvania; Memorial Sloan Kettering Cancer Center, New-York, New-York, USA and investigators of the MSKCC0747 and MSKCC94076 studies.