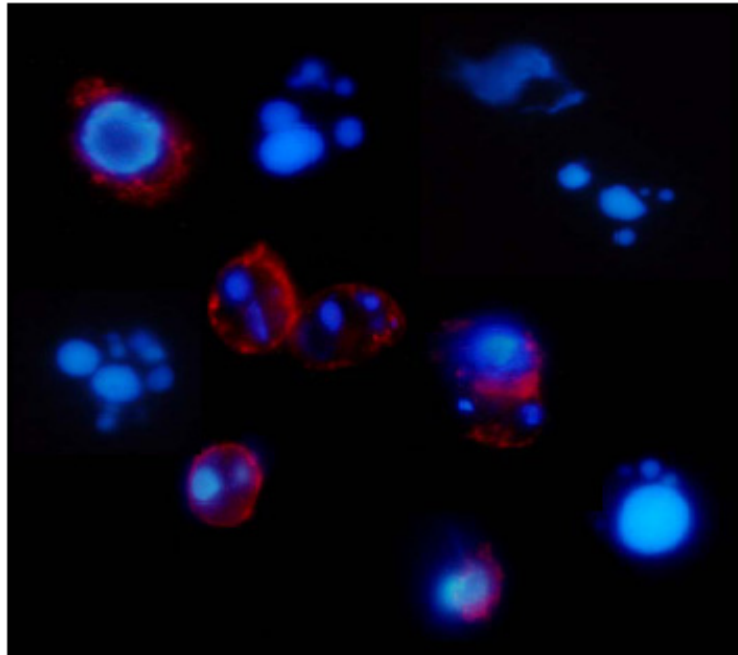


# **Bases moleculares de la apoptosis inducida por drogas en neoplasias linfoides**

---



**Silvia Marcé Torra**

**Facultat de Medicina  
Universitat de Barcelona**

**BIBLIOGRAFÍA**



**-A-**

Acimovic Y and Coe IR: Molecular evolution of the equilibrative nucleoside transporter family: identification of novel family members in prokaryotes and eukaryotes. *Mol.Biol.Evol.* 19 (2002): 2199-2210.

Aguayo C, Casado FJ, Pastor-Anglada M, and Sobrevia L: Effect of hyperglycaemia on cellular localization of human equilibrative nucleoside transporters (hENT) in umbilical vein endothelial cells. 536p (2001):

Aguiar RC, Sill H, Goldman JM, and Cross NC: The commonly deleted region at 9p21-22 in lymphoblastic leukemias spans at least 400 kb and includes p16 but not p15 or the IFN gene cluster. *Leukemia* 11 (1997): 233-238.

Alessi-Severini S, Gati WP, Belch AR, and Paterson AR: Intracellular pharmacokinetics of 2-chlorodeoxyadenosine in leukemia cells from patients with chronic lymphocytic leukemia. *Leukemia* 9 (1995): 1674-1679.

Allen PD, Bustin SA, and Newland AC: The role of apoptosis (programmed cell death) in haemopoiesis and the immune system. *Blood Rev.* 7 (1993): 63-73.

Ambrosini G, Adida C, and Altieri DC: A novel anti-apoptosis gene, survivin, expressed in cancer and lymphoma. *Nat.Med.* 3 (1997): 917-921.

Anderson CN and Tolkovsky AM: A role for MAPK/ERK in sympathetic neuron survival: protection against a p53-dependent, JNK-independent induction of apoptosis by cytosine arabinoside. *J.Neurosci.* 19 (1999): 664-673.

Andritsos L and Khoury H: Chronic lymphocytic leukemia. *Curr.Treat.Options.Oncol.* 3 (2002): 225-231.

Argatoff LH, Connors JM, Klasa RJ, Horsman DE, and Gascoyne RD: Mantle cell lymphoma: a clinicopathologic study of 80 cases. *Blood* 89 (1997): 2067-2078.

**-B-**

Bae J, Leo CP, Hsu SY, and Hsueh AJ: MCL-1S, a splicing variant of the antiapoptotic BCL-2 family member MCL-1, encodes a proapoptotic protein possessing only the BH3 domain. *J.Biol.Chem.* 275 (2000): 25255-25261.

Bailly JD, Skladanowski A, Bettaieb A, Mansat V, Larsen AK, and Laurent G: Natural resistance of acute myeloid leukemia cell lines to mitoxantrone is associated with lack of apoptosis. *Leukemia* 11 (1997): 1523-1532.

Bakhshi A, Jensen JP, Goldman P, Wright JJ, McBride OW, Epstein AL, and Korsmeyer SJ: Cloning the chromosomal breakpoint of t(14;18) human lymphomas: clustering around JH on chromosome 14 and near a transcriptional unit on 18. *Cell* 41 (1985): 899-906.

Baldwin SA, Mackey JR, Cass CE, and Young JD: Nucleoside transporters: molecular biology and implications for therapeutic development. *Mol.Med.Today* 5 (1999): 216-224.

## Bibliografia

---

Baldwin SA, Beal PR, Yao SY, King AE, Cass CE, and Young JD: The equilibrative nucleoside transporter family, SLC29. *Pflugers Arch.* 447 (2004): 735-743.

Baldwin SA, Yao SY, Hyde RJ, Ng AM, Foppolo S, Barnes K, Ritzel MW, Cass CE, and Young JD: Functional characterisation of novel human and mouse equilibrative nucleoside transporters (hENT3 and mENT3) located in intracellular membranes. *J.Biol.Chem.* 280 (2005): 15880-15887.

Banin S, Moyal L, Shieh S, Taya Y, Anderson CW, Chessa L, Smorodinsky NI, Prives C, Reiss Y, Shiloh Y, and Ziv Y: Enhanced phosphorylation of p53 by ATM in response to DNA damage. *Science* 281 (1998): 1674-1677.

Barinaga M: Signaling path may lead to better heart-failure therapies. *Science* 280 (1998): 383-

Batova A, Diccianni MB, Omura-Minamisawa M, Yu J, Carrera CJ, Bridgeman LJ, Kung FH, Pullen J, Amylon MD, and Yu AL: Use of alanosine as a methylthioadenosine phosphorylase-selective therapy for T-cell acute lymphoblastic leukemia in vitro. *Cancer Res* 59 (1999): 1492-1497.

Batova A, Cottam H, Yu J, Diccianni MB, Carrera CJ, and Yu AL: EFA (9- $\beta$ -D-erythrofuranosyladenine) is an effective salvage agent for methylthioadenosine phosphorylase-selective therapy of T-cell acute lymphoblastic leukemia with L-alanosine. *Blood* 107 (2006): 898-903.

Bea S, Ribas M, Hernandez JM, Bosch F, Pinyol M, Hernandez L, Garcia JL, Flores T, Gonzalez M, Lopez-Guillermo A, Piris MA, Cardesa A, Montserrat E, Miro R, and Campo E: Increased number of chromosomal imbalances and high-level DNA amplifications in mantle cell lymphoma are associated with blastoid variants. *Blood* 93 (1999): 4365-4374.

Bea S, Lopez-Guillermo A, Ribas M, Puig X, Pinyol M, Carrio A, Zamora L, Soler F, Bosch F, Stilgenbauer S, Colomer D, Miro R, Montserrat E, and Campo E: Genetic imbalances in progressed B-cell chronic lymphocytic leukemia and transformed large-cell lymphoma (Richter's syndrome). *Am.J.Pathol.* 161 (2002): 957-968.

Becattini B, Sareth S, Zhai D, Crowell KJ, Leone M, Reed JC, and Pellicchia M: Targeting apoptosis via chemical design: inhibition of bid-induced cell death by small organic molecules. *Chem.Biol.* 11 (2004): 1107-1117.

Behrmann I, Wallner S, Komyod W, Heinrich PC, Schuierer M, Buettner R, and Bosserhoff AK: Characterization of methylthioadenosine phosphorylase (MTAP) expression in malignant melanoma. *Am.J.Pathol.* 163 (2003): 683-690.

Bellosillo B, Colomer D, Pons G, and Gil J: Mitoxantrone, a topoisomerase II inhibitor, induces apoptosis of B-chronic lymphocytic leukaemia cells. *Br.J.Haematol.* 100 (1998): 142-146.

Bellosillo B, Villamor N, Colomer D, Pons G, Montserrat E, and Gil J: In vitro evaluation of fludarabine in combination with cyclophosphamide and/or mitoxantrone in B-cell chronic lymphocytic leukemia. *Blood* 94 (1999): 2836-2843.

Bellosillo B, Villamor N, Lopez-Guillermo A, Marce S, Esteve J, Campo E, Colomer D, and Montserrat E: Complement-mediated cell death induced by rituximab in B-cell

lymphoproliferative disorders is mediated in vitro by a caspase-independent mechanism involving the generation of reactive oxygen species. *Blood* 98 (2001): 2771-2777.

Bellosillo B, Villamor N, Lopez-Guillermo A, Marce S, Bosch F, Campo E, Montserrat E, and Colomer D: Spontaneous and drug-induced apoptosis is mediated by conformational changes of Bax and Bak in B-cell chronic lymphocytic leukemia. *Blood* 100 (2002): 1810-1816.

Belt JA, Marina NM, Phelps DA, and Crawford CR: Nucleoside transport in normal and neoplastic cells. *Adv.Enzyme Regul.* 33 (1993): 235-252.

Bentz M, Plesch A, Bullinger L, Stilgenbauer S, Ott G, Muller-Hermelink HK, Baudis M, Barth TF, Moller P, Lichter P, and Dohner H: t(11;14)-positive mantle cell lymphomas exhibit complex karyotypes and share similarities with B-cell chronic lymphocytic leukemia. *Genes Chromosomes.Cancer* 27 (2000): 285-294.

Bergman AM, Pinedo HM, Peters GJ: Determinants of resistance to 2',2'-difluorodeoxycytidine (gemcitabine). *Drug Resist Updat* 5 (2002): 19-33.

Bernal A, Pastore RD, Asgary Z, Keller SA, Cesarman E, Liou HC, and Schattner EJ: Survival of leukemic B cells promoted by engagement of the antigen receptor. *Blood* 98 (2001): 3050-3057.

Bertoni F, Conconi A, Cogliatti SB, Schmitz SF, Ghielmini M, Cerny T, Fey M, Pichert G, Bertolini F, Ponzoni M, Baldini L, Jones C, Auer R, Zucca E, Cavalli F, and Cotter FE: Immunoglobulin heavy chain genes somatic hypermutations and chromosome 11q22-23 deletion in classic mantle cell lymphoma: a study of the Swiss Group for Clinical Cancer Research. *Br.J.Haematol.* 124 (2004): 289-298.

Binet JL, Auquier A, Dighiero G, Chastang C, Piguët H, Goasguen J, Vaugier G, Potron G, Colona P, Oberling F, Thomas M, Tchernia G, Jacquillat C, Boivin P, Lesty C, Duault MT, Monconduit M, Belabbès S, and Gremy F: A new prognostic classification of chronic lymphocytic leukemia derived from a multivariate survival analysis. *Cancer* 48 (1981): 198-206.

Bingle CD, Craig RW, Swales BM, Singleton V, Zhou P, and Whyte MK: Exon skipping in Mcl-1 results in a bcl-2 homology domain 3 only gene product that promotes cell death. *J.Biol.Chem.* 275 (2000): 22136-22146.

Blagosklonny MV and Pardee AB: Exploiting cancer cell cycling for selective protection of normal cells. *Cancer Res.* 61 (2001): 4301-4305.

Bonifacino JS and Traub LM: Signals for sorting of transmembrane proteins to endosomes and lysosomes. *Annu.Rev.Biochem.* 72 (2003): 395-447.

Bosch F, Jares P, Campo E, Lopez-Guillermo A, Piris MA, Villamor N, Tassies D, Jaffe ES, Montserrat E, Rozman C, and Cardesa A: PRAD-1/cyclin D1 gene overexpression in chronic lymphoproliferative disorders: a highly specific marker of mantle cell lymphoma. *Blood* 84 (1994): 2726-2732.

Bosch F, Lopez-Guillermo A, Campo E, Ribera JM, Conde E, Piris MA, Vallespi T, Woessner S, and Montserrat E: Mantle cell lymphoma: presenting features, response to therapy, and prognostic factors. *Cancer* 82 (1998): 567-575.

## Bibliografia

---

Bosch F, Ferrer A, Lopez-Guillermo A, Gine E, Bellosillo B, Villamor N, Colomer D, Cobo F, Perales M, Esteve J, Altes A, Besalduch J, Ribera JM, Montserrat E: Fludarabine, cyclophosphamide and mitoxantrone in the treatment of resistant or relapsed chronic lymphocytic leukaemia. *Br J Haematol.* 119 (2002): 976-984.

Bouillet P, Metcalf D, Huang DC, Tarlinton DM, Kay TW, Kontgen F, Adams JM, and Strasser A: Proapoptotic Bcl-2 relative Bim required for certain apoptotic responses, leukocyte homeostasis, and to preclude autoimmunity. *Science* 286 (1999): 1735-1738.

Buckley S, Driscoll B, Barsky L, Weinberg K, Anderson K, and Warburton D: ERK activation protects against DNA damage and apoptosis in hyperoxic rat AEC2. *Am.J.Physiol* 277 (1999): L159-L166.

Bullrich F, Rasio D, Kitada S, Starostik P, Kipps T, Keating M, Albitar M, Reed JC, and Croce CM: ATM mutations in B-cell chronic lymphocytic leukemia. *Cancer Res.* 59 (1999): 24-27.

Byrd JC, Peterson BL, Morrison VA, Park K, Jacobson R, Hoke E, Vardiman JW, Rai K, Schiffer CA, and Larson RA: Randomized phase 2 study of fludarabine with concurrent versus sequential treatment with rituximab in symptomatic, untreated patients with B-cell chronic lymphocytic leukemia: results from Cancer and Leukemia Group B 9712 (CALGB 9712). *Blood* 101 (2003): 6-14.

Byrd JC, Stilgenbauer S, and Flinn IW: Chronic lymphocytic leukemia. *Hematology.(Am.Soc.Hematol.Educ.Program.)* (2004): 163-183.

### -C-

Caligaris-Cappio F: B-chronic lymphocytic leukemia: a malignancy of anti-self B cells. *Blood* 87 (1996): 2615-2620.

Caligaris-Cappio F and Hamblin TJ: B-cell chronic lymphocytic leukemia: a bird of a different feather. *J.Clin.Oncol.* 17 (1999): 399-408.

Caligaris-Cappio F: Role of the microenvironment in chronic lymphocytic leukaemia. *Br.J.Haematol.* 123 (2003): 380-388.

Calin GA, Dumitru CD, Shimizu M, Bichi R, Zupo S, Noch E, Aldler H, Rattan S, Keating M, Rai K, Rassenti L, Kipps T, Negrini M, Bullrich F, and Croce CM: Frequent deletions and down-regulation of micro- RNA genes miR15 and miR16 at 13q14 in chronic lymphocytic leukemia. *Proc.Natl.Acad.Sci.U.S.A* 99 (2002): 15524-15529.

Calin GA, Ferracin M, Cimmino A, Di Leva G, Shimizu M, Wojcik SE, Iorio MV, Visone R, Sever NI, Fabbri M, Iuliano R, Palumbo T, Pichiorri F, Roldo C, Garzon R, Sevignani C, Rassenti L, Alder H, Volinia S, Liu CG, Kipps TJ, Negrini M, and Croce CM: A MicroRNA signature associated with prognosis and progression in chronic lymphocytic leukemia. *N.Engl.J.Med.* 353 (2005): 1793-1801.

Camacho E, Hernandez L, Hernandez S, Tort F, Bellosillo B, Bea S, Bosch F, Montserrat E, Cardesa A, Fernandez PL, and Campo E: ATM gene inactivation in mantle cell lymphoma

mainly occurs by truncating mutations and missense mutations involving the phosphatidylinositol-3 kinase domain and is associated with increasing numbers of chromosomal imbalances. *Blood* 99 (2002): 238-244.

Campas C, Lopez JM, Santidrian AF, Barragan M, Bellosillo B, Colomer D, and Gil J: Acadesine activates AMPK and induces apoptosis in B-cell chronic lymphocytic leukemia cells but not in T lymphocytes. *Blood* 101 (2003): 3674-3680.

Campo E, Raffeld M, and Jaffe ES: Mantle-cell lymphoma. *Semin.Hematol.* 36 (1999): 115-127.

Campo E: Genetic and molecular genetic studies in the diagnosis of B-cell lymphomas I: mantle cell lymphoma, follicular lymphoma, and Burkitt's lymphoma. *Hum.Pathol.* 34 (2003): 330-335.

Carter BZ, Gronda M, Wang Z, Welsh K, Pinilla C, Andreeff M, Schober WD, Nefzi A, Pond GR, Mawji IA, Houghten RA, Ostresh J, Brandwein J, Minden MD, Schuh AC, Wells RA, Messner H, Chun K, Reed JC, and Schimmer AD: Small-molecule XIAP inhibitors derepress downstream effector caspases and induce apoptosis of acute myeloid leukemia cells. *Blood* 105 (2005): 4043-4050.

Cass CE, Dahlig E, Lau EY, Lynch TP, and Paterson AR: Fluctuations in nucleoside uptake and binding of the inhibitor of nucleoside transport, nitrobenzylthioinosine, during the replication cycle of HeLa cells. *Cancer Res.* 39 (1979): 1245-1252.

Cass CE, Young JD, Baldwin SA, Cabrita MA, Graham KA, Griffiths M, Jennings LL, Mackey JR, Ng AM, Ritzel MW, Vickers MF, and Yao SY: Nucleoside transporters of mammalian cells. *Pharm.Biotechnol.* 12 (1999): 313-352.

Catovsky D, Fooks J, and Richards S: Prognostic factors in chronic lymphocytic leukaemia: the importance of age, sex and response to treatment in survival. A report from the MRC CLL 1 trial. MRC Working Party on Leukaemia in Adults. *Br.J.Haematol.* 72 (1989): 141-149.

Chai J, Du C, Wu JW, Kyin S, Wang X, and Shi Y: Structural and biochemical basis of apoptotic activation by Smac/DIABLO. *Nature* 406 (2000): 855-862.

Chatterjee S, Berger SJ, and Berger NA: Poly(ADP-ribose) polymerase: a guardian of the genome that facilitates DNA repair by protecting against DNA recombination. *Mol.Cell Biochem.* 193 (1999): 23-30.

Chen L, Willis SN, Wei A, Smith BJ, Fletcher JI, Hinds MG, Colman PM, Day CL, Adams JM, and Huang DC: Differential targeting of prosurvival Bcl-2 proteins by their BH3-only ligands allows complementary apoptotic function. *Mol.Cell* 17 (2005): 393-403.

Chiarle R, Budel LM, Skolnik J, Frizzera G, Chilosi M, Corato A, Pizzolo G, Magidson J, Montagnoli A, Pagano M, Maes B, Wolf-Peeters C, and Inghirami G: Increased proteasome degradation of cyclin-dependent kinase inhibitor p27 is associated with a decreased overall survival in mantle cell lymphoma. *Blood* 95 (2000): 619-626.

Chiorazzi N and Ferrarini M: B cell chronic lymphocytic leukemia: lessons learned from studies of the B cell antigen receptor. *Annu.Rev.Immunol.* 21 (2003): 841-894.



## Bibliografia

---

Chiorazzi N, Rai KR, and Ferrarini M: Chronic lymphocytic leukemia. *N.Engl.J.Med.* 352 (2005): 804-815.

Chipuk JE, Kuwana T, Bouchier-Hayes L, Droin NM, Newmeyer DD, Schuler M, and Green DR: Direct activation of Bax by p53 mediates mitochondrial membrane permeabilization and apoptosis. *Science* 303 (2004): 1010-1014.

Chittenden T, Flemington C, Houghton AB, Ebb RG, Gallo GJ, Elangovan B, Chinnadurai G, and Lutz RJ: A conserved domain in Bak, distinct from BH1 and BH2, mediates cell death and protein binding functions. *EMBO J.* 14 (1995): 5589-5596.

Chiu D, Ma K, Scott A, and Duronio V: Acute activation of Erk1/Erk2 and protein kinase B/akt proceed by independent pathways in multiple cell types. *FEBS J.* 272 (2005): 4372-4384.

Chou TC and Talalay P: Quantitative analysis of dose-effect relationships: the combined effects of multiple drugs or enzyme inhibitors. *Adv.Enzyme Regul.* 22 (1984): 27-55.

Chow L, Lai R, Dabbagh L, Belch A, Young JD, Cass CE, and Mackey JR: Analysis of human equilibrative nucleoside transporter 1 (hENT1) protein in non-Hodgkin's lymphoma by immunohistochemistry. *Mod.Pathol.* 18 (2005): 558-564.

Christopher SA, Diegelman P, Porter CW, and Kruger WD: Methylthioadenosine phosphorylase, a gene frequently codeleted with p16(cdkN2a/ARF), acts as a tumor suppressor in a breast cancer cell line. *Cancer Res.* 62 (2002): 6639-6644.

Clarke ML, Mackey JR, Baldwin SA, Young JD, Cass CE. The role of membrane transporters in cellular resistance to anticancer nucleoside drugs. *Cancer Treat Res* 112 (2002): 27-47.

Cleary ML and Sklar J: Nucleotide sequence of a t(14;18) chromosomal breakpoint in follicular lymphoma and demonstration of a breakpoint-cluster region near a transcriptionally active locus on chromosome 18. *Proc.Natl.Acad.Sci.U.S.A* 82 (1985): 7439-7443.

Coe I, Zhang Y, McKenzie T, and Naydenova Z: PKC regulation of the human equilibrative nucleoside transporter, hENT1. *FEBS Lett.* 517 (2002): 201-205.

Coe IR, Griffiths M, Young JD, Baldwin SA, and Cass CE: Assignment of the human equilibrative nucleoside transporter (hENT1) to 6p21.1-p21.2. *Genomics* 45 (1997): 459-460.

Cory S and Adams JM: The Bcl2 family: regulators of the cellular life-or-death switch. *Nat.Rev.Cancer* 2 (2002): 647-656.

Cory S, Huang DC, and Adams JM: The Bcl-2 family: roles in cell survival and oncogenesis. *Oncogene* 22 (2003): 8590-8607.

Crawford CR, Patel DH, Naeve C, and Belt JA: Cloning of the human equilibrative, nitrobenzylmercaptapurine riboside (NBMPR)-insensitive nucleoside transporter ei by functional expression in a transport-deficient cell line. *J.Biol.Chem.* 273 (1998): 5288-5293.

Crespo M, Bosch F, Villamor N, Bellosillo B, Colomer D, Rozman M, Marce S, Lopez-Guillermo A, Campo E, and Montserrat E: ZAP-70 expression as a surrogate for immunoglobulin-variable-region mutations in chronic lymphocytic leukemia. *N.Engl.J.Med.* 348 (2003): 1764-1775.

Crompton M: The mitochondrial permeability transition pore and its role in cell death. *Biochem.J.* 341 ( Pt 2) (1999): 233-249.

Cross TG, Scheel-Toellner D, Henriquez NV, Deacon E, Salmon M, and Lord JM: Serine/threonine protein kinases and apoptosis. *Exp.Cell Res.* 256 (2000): 34-41.

**-D-**

Damaraju VL, Damaraju S, Young JD, Baldwin SA, MacKey J, Sawyer MB, and Cass CE: Nucleoside anticancer drugs: the role of nucleoside transporters in resistance to cancer chemotherapy. *Oncogene* 22 (2003): 7524-7536.

Damle RN, Ghiotto F, Valetto A, Albesiano E, Fais F, Yan XJ, Sison CP, Allen SL, Kolitz J, Schulman P, Vinciguerra VP, Budde P, Frey J, Rai KR, Ferrarini M, and Chiorazzi N: B-cell chronic lymphocytic leukemia cells express a surface membrane phenotype of activated, antigen-experienced B lymphocytes. *Blood* 99 (2002): 4087-4093.

Danial NN and Korsmeyer SJ: Cell death: critical control points. *Cell* 116 (2004): 205-219.

Datta SR, Brunet A, and Greenberg ME: Cellular survival: a play in three Akts. *Genes Dev.* 13 (1999): 2905-2927.

De IP, Capranico G, and Zunino F: The role of topoisomerase II in drug resistance. *Life Sci.* 48 (1991): 2195-2205.

Deveraux QL and Reed JC: IAP family proteins--suppressors of apoptosis. *Genes Dev.* 13 (1999): 239-252.

Dicker F, Kater AP, Fukuda T, and Kipps TJ: Fas-ligand (CD178) and TRAIL synergistically induce apoptosis of CD40-activated chronic lymphocytic leukemia B cells. *Blood* 105 (2005): 3193-3198.

Doctor KS, Reed JC, Godzik A, and Bourne PE: The apoptosis database. *Cell Death.Differ.* 10 (2003): 621-633.

Dohner H, Fischer K, Bentz M, Hansen K, Benner A, Cabot G, Diehl D, Schlenk R, Coy J, Stilgenbauer S, and .: p53 gene deletion predicts for poor survival and non-response to therapy with purine analogs in chronic B-cell leukemias. *Blood* 85 (1995): 1580-1589.

Dohner H, Stilgenbauer S, Benner A, Leupolt E, Krober A, Bullinger L, Dohner K, Bentz M, and Lichter P: Genomic aberrations and survival in chronic lymphocytic leukemia. *N.Engl.J.Med.* 343 (2000): 1910-1916.

Du C, Fang M, Li Y, Li L, and Wang X: Smac, a mitochondrial protein that promotes cytochrome c-dependent caspase activation by eliminating IAP inhibition. *Cell* 102 (2000): 33-42.

## Bibliografia

---

Duflot S, Calvo F, Casado FJ, Enrich C, and Pastor-Anglada M: Concentrative nucleoside transporter (rCNT1) is targeted to the apical membrane through the hepatic transcytotic pathway. *Exp.Cell.Res.*(submitted) 2002):

Dunham A, Matthews LH, Burton J, Ashurst JL, Howe KL, Ashcroft KJ, Beare DM, Burford DC, Hunt SE, Griffiths-Jones S, et al: The DNA sequence and analysis of human chromosome 13. *Nature* 428 (2004): 522-528.

### -E-

Earnshaw WC, Martins LM, and Kaufmann SH: Mammalian caspases: structure, activation, substrates, and functions during apoptosis. *Annu.Rev.Biochem.* 68 (1999): 383-424.

Efferth T, Miyachi H, Drexler HG, and Gebhart E: Methylthioadenosine phosphorylase as target for chemoselective treatment of T-cell acute lymphoblastic leukemic cells. *Blood Cells Mol.Dis.* 28 (2002): 47-56.

Ellis RE, Yuan JY, and Horvitz HR: Mechanisms and functions of cell death. *Annu.Rev.Cell Biol.* 7 (1991): 663-698.

Erhardt P, Schremser EJ, and Cooper GM: B-Raf inhibits programmed cell death downstream of cytochrome c release from mitochondria by activating the MEK/Erk pathway. *Mol.Cell Biol.* 19 (1999): 5308-5315.

Erlacher M, Michalak EM, Kelly PN, Labi V, Niederegger H, Coultas L, Adams JM, Strasser A, and Villunger A: BH3-only proteins Puma and Bim are rate-limiting for gamma-radiation- and glucocorticoid-induced apoptosis of lymphoid cells in vivo. *Blood* 106 (2005): 4131-4138.

Evan G and Littlewood T: A matter of life and cell death. *Science* 281 (1998): 1317-1322.

### -F-

Fadeel B, Hassan Z, Hellstrom-Lindberg E, Henter JI, Orrenius S, and Zhivotovsky B: Cleavage of Bcl-2 is an early event in chemotherapy-induced apoptosis of human myeloid leukemia cells. *Leukemia* 13 (1999): 719-728.

Fais F, Ghiotto F, Hashimoto S, Sellars B, Valetto A, Allen SL, Schulman P, Vinciguerra VP, Rai K, Rassenti LZ, Kipps TJ, Dighiero G, Schroeder HW, Jr., Ferrarini M, and Chiorazzi N: Chronic lymphocytic leukemia B cells express restricted sets of mutated and unmutated antigen receptors. *J.Clin.Invest* 102 (1998): 1515-1525.

Fang NY, Greiner TC, Weisenburger DD, Chan WC, Vose JM, Smith LM, Armitage JO, Mayer RA, Pike BL, Collins FS, and Hacia JG: Oligonucleotide microarrays demonstrate the highest frequency of ATM mutations in the mantle cell subtype of lymphoma. *Proc.Natl.Acad.Sci.U.S.A* 100 (2003): 5372-5377.

Fang X, Parkinson FE, Mowles DA, Young JD, and Cass CE: Functional characterization of a recombinant sodium-dependent nucleoside transporter with selectivity for pyrimidine nucleosides (cNT1rat) by transient expression in cultured mammalian cells. *Biochem.J.* 317 ( Pt 2) (1996): 457-465.

Farre X, Guillen-Gomez E, Sanchez L, Hardisson D, Plaza Y, Lloberas J, Casado FJ, Palacios J, and Pastor-Anglada M: Expression of the nucleoside-derived drug transporters hCNT1, hENT1 and hENT2 in gynecologic tumors. *Int.J.Cancer* 112 (2004): 959-966.

Fedier A, Schlamming M, Schwarz VA, Haller U, Howell SB, and Fink D: Loss of atm sensitises p53-deficient cells to topoisomerase poisons and antimetabolites. *Ann.Oncol.* 14 (2003): 938-945.

Franklin RA and McCubrey JA: Kinases: positive and negative regulators of apoptosis. *Leukemia* 14 (2000): 2019-2034.

Fujise K, Zhang D, Liu J, and Yeh ET: Regulation of apoptosis and cell cycle progression by MCL1. Differential role of proliferating cell nuclear antigen. *J.Biol.Chem.* 275 (2000): 39458-39465.

Furman RR, Asgary Z, Mascarenhas JO, Liou HC, and Schattner EJ: Modulation of NF-kappa B activity and apoptosis in chronic lymphocytic leukemia B cells. *J.Immunol.* 164 (2000): 2200-2206.

#### **-G-**

Galmarini CM, Mackey JR, and Dumontet C: Nucleoside analogues: mechanisms of drug resistance and reversal strategies. *Leukemia* 15 (2001): 875-890.

Galmarini CM, Mackey JR, and Dumontet C: Nucleoside analogues and nucleobases in cancer treatment. *Lancet Oncol.* 3 (2002a): 415-424.

Galmarini CM, Thomas X, Calvo F, Rousselot P, Jafaari AE, Cros E, and Dumontet C: Potential mechanisms of resistance to cytarabine in AML patients. *Leuk.Res.* 26 (2002b): 621-629.

Galmarini CM, Thomas X, Calvo F, Rousselot P, Rabilloud M, El Jaffari A, Cros E, and Dumontet C: In vivo mechanisms of resistance to cytarabine in acute myeloid leukaemia. *Br.J.Haematol.* 117 (2002c): 860-868.

Galton DA: The pathogenesis of chronic lymphocytic leukemia. *Can.Med.Assoc.J.* 94 (1966): 1005-1010.

Gandhi V, Nowak B, Keating MJ, and Plunkett W: Modulation of arabinosylcytosine metabolism by arabinosyl-2-fluoroadenine in lymphocytes from patients with chronic lymphocytic leukemia: implications for combination therapy. *Blood* 74 (1989): 2070-2075.

Garcia-Castellano JM, Villanueva A, Healey JH, Sowers R, Cordon-Cardo C, Huvos A, Bertino JR, Meyers P, and Gorlick R: Methylthioadenosine phosphorylase gene deletions are common in osteosarcoma. *Clin.Cancer Res.* 8 (2002): 782-787.

Garcia-Marco JA, Price CM, and Catovsky D: Interphase cytogenetics in chronic lymphocytic leukemia. *Cancer Genet.Cytogenet.* 94 (1997): 52-58.

Gati WP, Paterson AR, Larratt LM, Turner AR, and Belch AR: Sensitivity of acute leukemia cells to cytarabine is a correlate of cellular es nucleoside transporter site content measured by flow cytometry with SAENTA-fluorescein. *Blood* 90 (1997): 346-353.

Gati WP, Paterson AR, Belch AR, Chlumecky V, Larratt LM, Mant MJ, and Turner AR: Es nucleoside transporter content of acute leukemia cells: role in cell sensitivity to cytarabine (araC). *Leuk.Lymphoma* 32 (1998): 45-54.

Gozzetti A, Marotta G, Lenoci M, Crupi R, Tozzuoli D, Calabrese S, Forconi F, Fabbri A, and Lauria F: Trisomy 12 and t(14;22)(q32;q11) in a patient with B-cell chronic lymphocytic leukemia. *Hematology.* 9 (2004): 405-407.

Gray JH, Owen RP, and Giacomini KM: The concentrative nucleoside transporter family, SLC28. *Pflugers Arch.* 447 (2004): 728-734.

Green DR and Reed JC: Mitochondria and apoptosis. *Science* 281 (1998): 1309-1312.

Green DR and Evan GI: A matter of life and death. *Cancer Cell* 1 (2002): 19-30.

Gridelli C, Aapro M, Ardizzoni A, Balducci L, De MF, Kelly K, Le CT, Manegold C, Perrone F, Rosell R, Shepherd F, De PL, Di MM, and Langer C: Treatment of advanced non-small-cell lung cancer in the elderly: results of an international expert panel. *J.Clin.Oncol.* 23 (2005): 3125-3137.

Griffith DA and Jarvis SM: Nucleoside and nucleobase transport systems of mammalian cells. *Biochim.Biophys.Acta* 1286 (1996): 153-181.

Griffiths M, Beaumont N, Yao SY, Sundaram M, Boumah CE, Davies A, Kwong FY, Coe I, Cass CE, Young JD, and Baldwin SA: Cloning of a human nucleoside transporter implicated in the cellular uptake of adenosine and chemotherapeutic drugs. *Nat.Med.* 3 (1997): 89-93.

Gronbaek K, Nedergaard T, Andersen MK, thor SP, Guldborg P, Moller P, Zeuthen J, Ebbe HN, Hou-Jensen K, and Ralfkiaer E: Concurrent disruption of cell cycle associated genes in mantle cell lymphoma: a genotypic and phenotypic study of cyclin D1, p16, p15, p53 and pRb. *Leukemia* 12 (1998): 1266-1271.

Guipaud O, Deriano L, Salin H, Vallat L, Sabatier L, Merle-Beral H, and Delic J: B-cell chronic lymphocytic leukaemia: a polymorphic family unified by genomic features. *Lancet Oncol.* 4 (2003): 505-514.

Gurbuxani S, Xu Y, Keerthivasan G, Wickrema A, and Crispino JD: Differential requirements for survivin in hematopoietic cell development. *Proc.Natl.Acad.Sci.U.S.A* 102 (2005): 11480-11485.

Gutierrez-Puente Y, Zapata-Benavides P, Tari AM, and Lopez-Berestein G: Bcl-2-related antisense therapy. *Semin.Oncol.* 29 (2002): 71-76.

**-H-**

Hallek M, Wanders L, Ostwald M, Busch R, Senekowitsch R, Stern S, Schick HD, Kuhn-Hallek I, and Emmerich B: Serum beta(2)-microglobulin and serum thymidine kinase are independent predictors of progression-free survival in chronic lymphocytic leukemia and immunocytoma. *Leuk.Lymphoma* 22 (1996): 439-447.

Hamilton SR, Yao SY, Ingram JC, Hadden DA, Ritzel MW, Gallagher MP, Henderson PJ, Cass CE, Young JD, and Baldwin SA: Subcellular distribution and membrane topology of the mammalian concentrative Na<sup>+</sup>-nucleoside cotransporter rCNT1. *J.Biol.Chem.* 276 (2001): 27981-27988.

Hammarsund M, Corcoran MM, Wilson W, Zhu C, Einhorn S, Sangfelt O, and Grander D: Characterization of a novel B-CLL candidate gene--DLEU7--located in the 13q14 tumor suppressor locus. *FEBS Lett.* 556 (2004): 75-80.

Hanada M, Delia D, Aiello A, Stadtmauer E, and Reed JC: bcl-2 gene hypomethylation and high-level expression in B-cell chronic lymphocytic leukemia. *Blood* 82 (1993): 1820-1828.

Hanada M, Feng J, and Hemmings BA: Structure, regulation and function of PKB/AKT--a major therapeutic target. *Biochim.Biophys.Acta* 1697 (2004): 3-16.

Hanahan D and Weinberg RA: The hallmarks of cancer. *Cell* 100 (2000): 57-70.

Hannon GJ: RNA interference. *Nature* 418 (2002): 244-251.

Harasawa H, Yamada Y, Kudoh M, Sugahara K, Soda H, Hirakata Y, Sasaki H, Ikeda S, Matsuo T, Tomonaga M, Nobori T, and Kamihara S: Chemotherapy targeting methylthioadenosine phosphorylase (MTAP) deficiency in adult T cell leukemia (ATL). *Leukemia* 16 (2002): 1799-1807.

Hegde R, Srinivasula SM, Ahmad M, Fernandes-Alnemri T, and Alnemri ES: Blk, a BH3-containing mouse protein that interacts with Bcl-2 and Bcl-xL, is a potent death agonist. *J.Biol.Chem.* 273 (1998): 7783-7786.

Helleday T, Bryant HE, and Schultz N: Poly(ADP-ribose) Polymerase (PARP-1) in Homologous Recombination and as a Target for Cancer Therapy. *Cell Cycle* 4 (2005):

Hellerbrand C, Muhlbauer M, Wallner S, Schuierer M, Behrmann I, Bataille F, Scholmerich J, and Bosserhoff AK: Promotor-hypermethylation is causing functional relevant downregulation of methylthioadenosine phosphorylase (MTAP) expression in hepatocellular carcinoma. *Carcinogenesis* 2005):

Herishanu Y, Kay S, Rogowski O, Pick M, Naparstek E, Deutsch VR, and Polliack A: T-cell ZAP-70 overexpression in chronic lymphocytic leukemia (CLL) correlates with CLL cell ZAP-70 levels, clinical stage and disease progression. *Leukemia* 19 (2005): 1289-1291.

Hernandez L, Fest T, Cazorla M, Teruya-Feldstein J, Bosch F, Peinado MA, Piris MA, Montserrat E, Cardesa A, Jaffe ES, Campo E, and Raffold M: p53 gene mutations and protein

overexpression are associated with aggressive variants of mantle cell lymphomas. *Blood* 87 (1996): 3351-3359.

Hernandez L, Hernandez S, Bea S, Pinyol M, Ferrer A, Bosch F, Nadal A, Fernandez PL, Palacin A, Montserrat E, and Campo E: c-myc mRNA expression and genomic alterations in mantle cell lymphomas and other nodal non-Hodgkin's lymphomas. *Leukemia* 13 (1999): 2087-2093.

Hernandez L, Bea S, Pinyol M, Ott G, Katzenberger T, Rosenwald A, Bosch F, Lopez-Guillermo A, Montserrat E and Campo E: CDK4 and MDM2 gene alterations mainly occur in highly proliferative and aggressive mantle cell lymphomas with wild-type INK4a/ARF locus. *Cancer Res.* 65 (2005): 2199-2206.

Hinds PW, Dowdy SF, Eaton EN, Arnold A, and Weinberg RA: Function of a human cyclin gene as an oncogene. *Proc.Natl.Acad.Sci.U.S.A* 91 (1994): 709-713.

Hipp S, Ringshausen L, Oelsner M, Bogner C, Peschel C, Decker T: Inhibition of the mammalian target of rapamycin and the induction of cell cycle arrest in mantle cell lymphoma cells. *Haematologica* 90 (2005): 1433-1434.

Hofmann WK, de Vos S, Tsukasaki K, Wachsmann W, Pinkus GS, Said JW, and Koeffler HP: Altered apoptosis pathways in mantle cell lymphoma detected by oligonucleotide microarray. *Blood* 98 (2001): 787-794.

Houlston RS, Catovsky D, and Yuille MR: Genetic susceptibility to chronic lymphocytic leukemia. *Leukemia* 16 (2002): 1008-1014.

Houlston RS, Sellick G, Yuille M, Matutes E, and Catovsky D: Causation of chronic lymphocytic leukemia--insights from familial disease. *Leuk.Res.* 27 (2003): 871-876.

Hsu YT, Wolter KG, and Youle RJ: Cytosol-to-membrane redistribution of Bax and Bcl-X(L) during apoptosis. *Proc.Natl.Acad.Sci.U.S.A* 94 (1997): 3668-3672.

Huang P and Plunkett W: Action of 9-beta-D-arabinofuranosyl-2-fluoroadenine on RNA metabolism. *Mol.Pharmacol.* 39 (1991a): 449-455.

Huang P, Chubb S, Hertel LW, Grindey GB, and Plunkett W: Action of 2',2'-difluorodeoxycytidine on DNA synthesis. *Cancer Res.* 51 (1991b): 6110-6117.

Huang P, Sandoval A, Van Den NE, Keating MJ, and Plunkett W: Inhibition of RNA transcription: a biochemical mechanism of action against chronic lymphocytic leukemia cells by fludarabine. *Leukemia* 14 (2000): 1405-1413.

Huang QQ, Yao SY, Ritzel MW, Paterson AR, Cass CE, and Young JD: Cloning and functional expression of a complementary DNA encoding a mammalian nucleoside transport protein. *J.Biol.Chem.* 269 (1994): 17757-17760.

Hutter G, Scheubner M, Zimmermann Y, Kalla J, Katzenberger T, Hubler K, Roth S, Hiddemann W, Ott G, and Dreyling M: Differential effect of epigenetic alterations and genomic deletions of CDK inhibitors [p16(INK4a), p15(INK4b), p14(ARF)] in mantle cell lymphoma. *Genes Chromosomes.Cancer* 2005):

Hyde RJ, Cass CE, Young JD, and Baldwin SA: The ENT family of eukaryote nucleoside and nucleobase transporters: recent advances in the investigation of structure/function relationships and the identification of novel isoforms. *Mol.Membr.Biol.* 18 (2001): 53-63.

**-I-**

Illei PB, Rusch VW, Zakowski MF, and Ladanyi M: Homozygous deletion of CDKN2A and codeletion of the methylthioadenosine phosphorylase gene in the majority of pleural mesotheliomas. *Clin.Cancer Res.* 9 (2003): 2108-2113.

Irmeler M, Thome M, Hahne M, Schneider P, Hofmann K, Steiner V, Bodmer JL, Schroter M, Burns K, Mattmann C, Rimoldi D, French LE, and Tschopp J: Inhibition of death receptor signals by cellular FLIP. *Nature* 388 (1997): 190-195.

Irwin MS and Kaelin WG: p53 family update: p73 and p63 develop their own identities. *Cell Growth Differ.* 12 (2001): 337-349.

Ishii M, Nakazawa K, Wada H, Nishioka J, Nakatani K, Yamada Y, Kamihira S, Kusunoki M, and Nobori T: Methylthioadenosine phosphorylase gene is silenced by promoter hypermethylation in human lymphoma cell line DHL-9: another mechanism of enzyme deficiency. *Int.J.Oncol.* 26 (2005): 985-991.

Izban KF: Pathology. *Arch.Pathol.Lab Med.* 124 (2000): 1854-

**-J-**

Jaffe ES, Harris NL, Stein H, and Vardiman JW: World Health Organization Classification of Tumours. Pathology and Genetics of Tumours of Haematopoietic and Lymphoid Tissues. 2001:

Janiak F, Leber B, and Andrews DW: Assembly of Bcl-2 into microsomal and outer mitochondrial membranes. *J.Biol.Chem.* 269 (1994): 9842-9849.

Jennings CD and Foon KA: Recent advances in flow cytometry: application to the diagnosis of hematologic malignancy. *Blood* 90 (1997): 2863-2892.

Jesenberger V and Jentsch S: Deadly encounter: ubiquitin meets apoptosis. *Nat.Rev.Mol.Cell Biol.* 3 (2002): 112-121.

Jiang A and Clark EA: Involvement of Bik, a proapoptotic member of the Bcl-2 family, in surface IgM-mediated B cell apoptosis. *J.Immunol.* 166 (2001): 6025-6033.

Johnson AJ, Mone AP, Abhyankar V, and Byrd JC: Advances in the therapy of chronic lymphocytic leukemia. *Curr.Opin.Hematol.* 10 (2003): 297-305.



### -K-

Karin M and Lin A: NF-kappaB at the crossroads of life and death. *Nat.Immunol.* 3 (2002): 221-227.

Kater AP, Dicker F, Mangiola M, Welsh K, Houghten R, Ostresh J, Nefzi A, Reed JC, Pinilla C, and Kipps TJ: Inhibitors of XIAP sensitize CD40-activated chronic lymphocytic leukemia cells to CD95-mediated apoptosis. *Blood* 106 (2005): 1742-1748.

Keating MJ, Chiorazzi N, Messmer B, Damle RN, Allen SL, Rai KR, Ferrarini M, and Kipps TJ: Biology and treatment of chronic lymphocytic leukemia. *Hematology.(Am.Soc.Hematol.Educ.Program.)* (2003): 153-175.

Kerr JF, Wyllie AH, and Currie AR: Apoptosis: a basic biological phenomenon with wide-ranging implications in tissue kinetics. *Br.J.Cancer* 26 (1972): 239-257.

Kerr JF, Winterford CM, and Harmon BV: Apoptosis. Its significance in cancer and cancer therapy. *Cancer* 73 (1994): 2013-2026.

Khoury JD, Medeiros LJ, Rassidakis GZ, McDonnell TJ, Abruzzo LV, and Lai R: Expression of Mcl-1 in mantle cell lymphoma is associated with high-grade morphology, a high proliferative state, and p53 overexpression. *J.Pathol.* 199 (2003): 90-97.

Kienle DL, Korz C, Hosch B, Benner A, Mertens D, Habermann A, Krober A, Jager U, Lichter P, Dohner H, and Stilgenbauer S: Evidence for distinct pathomechanisms in genetic subgroups of chronic lymphocytic leukemia revealed by quantitative expression analysis of cell cycle, activation, and apoptosis-associated genes. *J.Clin.Oncol.* 23 (2005): 3780-3792.

Kitada S, Andersen J, Akar S, Zapata JM, Takayama S, Krajewski S, Wang HG, Zhang X, Bullrich F, Croce CM, Rai K, Hines J, and Reed JC: Expression of apoptosis-regulating proteins in chronic lymphocytic leukemia: correlations with *In vitro* and *In vivo* chemoresponses. *Blood* 91 (1998): 3379-3389.

Kitada S, Zapata JM, Andreeff M, and Reed JC: Bryostatins and CD40-ligand enhance apoptosis resistance and induce expression of cell survival genes in B-cell chronic lymphocytic leukaemia. *Br.J.Haematol.* 106 (1999): 995-1004.

Kitada S, Pedersen IM, Schimmer AD, and Reed JC: Dysregulation of apoptosis genes in hematopoietic malignancies. *Oncogene* 21 (2002): 3459-3474.

Klionsky DJ and Emr SD: Autophagy as a regulated pathway of cellular degradation. *Science* 290 (2000): 1717-1721.

Krajewski S, Krajewska M, Shabaik A, Wang HG, Irie S, Fong L, and Reed JC: Immunohistochemical analysis of *in vivo* patterns of Bcl-X expression. *Cancer Res.* 54 (1994): 5501-5507.

Krammer PH: CD95's deadly mission in the immune system. *Nature* 407 (2000): 789-795.

Krober A, Seiler T, Benner A, Bullinger L, Bruckle E, Lichter P, Dohner H, and Stilgenbauer S: V(H) mutation status, CD38 expression level, genomic aberrations, and survival in chronic lymphocytic leukemia. *Blood* 100 (2002): 1410-1416.

Kroemer G: The mitochondrion as an integrator/coordinator of cell death pathways. *Cell Death.Differ.* 5 (1998): 547-

Krueger A, Schmitz I, Baumann S, Krammer PH, and Kirchhoff S: Cellular FLICE-inhibitory protein splice variants inhibit different steps of caspase-8 activation at the CD95 death-inducing signaling complex. *J.Biol.Chem.* 276 (2001): 20633-20640.

Kutzki O, Park HS, Ernst JT, Orner BP, Yin H, and Hamilton AD: Development of a potent Bcl-x(L) antagonist based on alpha-helix mimicry. *J.Am.Chem.Soc.* 124 (2002): 11838-11839.

**-L-**

Lai Y, Tse CM, and Unadkat JD: Mitochondrial expression of the human equilibrative nucleoside transporter 1 (hENT1) results in enhanced mitochondrial toxicity of antiviral drugs. *J.Biol.Chem.* 279 (2004): 4490-4497.

Lang TT, Selner M, Young JD, and Cass CE: Acquisition of human concentrative nucleoside transporter 2 (hcnt2) activity by gene transfer confers sensitivity to fluoropyrimidine nucleosides in drug-resistant leukemia cells. *Mol.Pharmacol.* 60 (2001): 1143-1152.

Larrayoz IM, Casado FJ, Pastor-Anglada M, and Lostao MP: Electrophysiological characterization of the human Na(+)/nucleoside cotransporter 1 (hCNT1) and role of adenosine on hCNT1 function. *J.Biol.Chem.* 279 (2004): 8999-9007.

Leu JI, Dumont P, Hafey M, Murphy ME, and George DL: Mitochondrial p53 activates Bak and causes disruption of a Bak-Mcl1 complex. *Nat.Cell Biol.* 6 (2004): 443-450.

Li LY, Luo X, and Wang X: Endonuclease G is an apoptotic DNase when released from mitochondria. *Nature* 412 (2001): 95-99.

Li Q, Xue YQ, Jiang HY, Pan JL, Wu YF, and Yang YB: [Genomic abnormalities detected by panel fluorescence in situ hybridization in chronic lymphocytic leukaemia]. *Zhonghua Yi.Xue.Yi.Chuan Xue.Za Zhi.* 22 (2005): 324-326.

Liao MJ and Van Dyke T: Critical role for Atm in suppressing V(D)J recombination-driven thymic lymphoma. *Genes Dev.* 13 (1999): 1246-1250.

Lindsten T, Ross AJ, King A, Zong WX, Rathmell JC, Shiels HA, Ulrich E, Waymire KG, Mahar P, Frauwirth K, Chen Y, Wei M, Eng VM, Adelman DM, Simon MC, Ma A, Golden JA, Evan G, Korsmeyer SJ, MacGregor GR, and Thompson CB: The combined functions of proapoptotic Bcl-2 family members bak and bax are essential for normal development of multiple tissues. *Mol.Cell* 6 (2000): 1389-1399.

## Bibliografia

---

Lithgow T, van DR, Bertram JF, and Strasser A: The protein product of the oncogene bcl-2 is a component of the nuclear envelope, the endoplasmic reticulum, and the outer mitochondrial membrane. *Cell Growth Differ.* 5 (1994): 411-417.

Liu X, Kim CN, Yang J, Jemmerson R, and Wang X: Induction of apoptotic program in cell-free extracts: requirement for dATP and cytochrome c. *Cell* 86 (1996): 147-157.

Locksley RM, Killeen N, and Lenardo MJ: The TNF and TNF receptor superfamilies: integrating mammalian biology. *Cell* 104 (2001): 487-501.

Lostao MP, Mata JF, Larrayoz IM, Inzillo SM, Casado FJ, and Pastor-Anglada M: Electrogenic uptake of nucleosides and nucleoside-derived drugs by the human nucleoside transporter 1 (hCNT1) expressed in *Xenopus laevis* oocytes. *FEBS Lett.* 481 (2000): 137-140.

Lotfi K, Mansson E, Chandra J, Wang Y, Xu D, Knaust E, Spasokoukotskaja T, Liliemark E, Eriksson S, and Albertioni F: Pharmacological basis for cladribine resistance in a human acute T lymphoblastic leukaemia cell line selected for resistance to etoposide. *Br.J.Haematol.* 113 (2001): 339-346.

Lu X, Gong S, Monks A, Zaharevitz D, and Moscow JA: Correlation of nucleoside and nucleobase transporter gene expression with antimetabolite drug cytotoxicity. *J.Exp.Ther.Oncol.* 2 (2002): 200-212.

Luo X, Budihardjo I, Zou H, Slaughter C, and Wang X: Bid, a Bcl2 interacting protein, mediates cytochrome c release from mitochondria in response to activation of cell surface death receptors. *Cell* 94 (1998): 481-490.

### -M-

M'kacher R, Bennaceur A, Farace F, Lauge A, Plassa LF, Wittmer E, Dossou J, Violot D, Deutsch E, Bourhis J, Stoppa-Lyonnet D, Ribrag V, Carde P, Parmentier C, Bernheim A, and Turhan AG: Multiple molecular mechanisms contribute to radiation sensitivity in mantle cell lymphoma. *Oncogene* 22 (2003): 7905-7912.

Mackey JR, Mani RS, Selner M, Mowles D, Young JD, Belt JA, Crawford CR, and Cass CE: Functional nucleoside transporters are required for gemcitabine influx and manifestation of toxicity in cancer cell lines. *Cancer Res.* 58 (1998): 4349-4357.

Mackey JR, Yao SY, Smith KM, Karpinski E, Baldwin SA, Cass CE, and Young JD: Gemcitabine transport in xenopus oocytes expressing recombinant plasma membrane mammalian nucleoside transporters. *J.Natl.Cancer Inst.* 91 (1999): 1876-1881.

Mackey JR, Jennings LL, Clarke ML, Santos CL, Dabbagh L, Vsianska M, Koski SL, Coupland RW, Baldwin SA, Young JD, and Cass CE: Immunohistochemical variation of human equilibrative nucleoside transporter 1 protein in primary breast cancers. *Clin.Cancer Res.* 8 (2002): 110-116.

Magnac C, Porcher R, Davi F, Nataf J, Payelle-Brogard B, Tang RP, Oppezio P, Levy V, Dighiero G, and Jhenaum-Cymbalista F: Predictive value of serum thymidine kinase level for Ig-V mutational status in B-CLL. *Leukemia* 17 (2003): 133-137.

Mansson E, Paul A, Lofgren C, Ullberg K, Paul C, Eriksson S, and Albertioni F: Cross-resistance to cytosine arabinoside in a multidrug-resistant human promyelocytic cell line selected for resistance to doxorubicin: implications for combination chemotherapy. *Br.J.Haematol.* 114 (2001): 557-565.

Martinez A, Bellosillo B, Bosch F, Ferrer A, Marce S, Villamor N, Ott G, Montserrat E, Campo E, and Colomer D: Nuclear survivin expression in mantle cell lymphoma is associated with cell proliferation and survival. *Am.J.Pathol.* 164 (2004): 501-510.

Martinez N, Camacho FI, Algara P, Rodriguez A, Dopazo A, Ruiz-Ballesteros E, Martin P, Martinez-Climent JA, Garcia-Conde J, Menarguez J, Solano F, Mollejo M, and Piris MA: The molecular signature of mantle cell lymphoma reveals multiple signals favoring cell survival. *Cancer Res.* 63 (2003): 8226-8232.

Martinez-Climent JA, Vizcarra E, Sanchez D, Blesa D, Marugan I, Benet I, Sole F, Rubio-Moscardo F, Terol MJ, Climent J, Sarsotti E, Tormo M, Andreu E, Salido M, Ruiz MA, Prosper F, Siebert R, Dyer MJ, and Garcia-Conde J: Loss of a novel tumor suppressor gene locus at chromosome 8p is associated with leukemic mantle cell lymphoma. *Blood* 98 (2001): 3479-3482.

Martins LM, Iaccarino I, Tenev T, Gschmeissner S, Totty NF, Lemoine NR, Savopoulos J, Gray CW, Creasy CL, Dingwall C, and Downward J: The serine protease Omi/HtrA2 regulates apoptosis by binding XIAP through a reaper-like motif. *J.Biol.Chem.* 277 (2002): 439-444.

Marzo I, Brenner C, Zamzami N, Jurgensmeier JM, Susin SA, Vieira HL, Prevost MC, Xie Z, Matsuyama S, Reed JC, and Kroemer G: Bax and adenine nucleotide translocator cooperate in the mitochondrial control of apoptosis. *Science* 281 (1998): 2027-2031.

Mavromatis BH and Cheson BD: Novel therapies for chronic lymphocytic leukemia. *Blood Rev.* 18 (2004): 137-148.

McDonnell TJ, Beham A, Sarkiss M, Andersen MM, and Lo P: Importance of the Bcl-2 family in cell death regulation. *Experientia* 52 (1996): 1008-1017.

Mellor H and Parker PJ: The extended protein kinase C superfamily. *Biochem.J.* 332 ( Pt 2) (1998): 281-292.

Mihara M, Erster S, Zaika A, Petrenko O, Chittenden T, Pancoska P, and Moll UM: p53 has a direct apoptogenic role at the mitochondria. *Mol.Cell* 11 (2003): 577-590.

Milburn CC, Deak M, Kelly SM, Price NC, Alessi DR, and Van Aalten DM: Binding of phosphatidylinositol 3,4,5-trisphosphate to the pleckstrin homology domain of protein kinase B induces a conformational change. *Biochem.J.* 375 (2003): 531-538.

Molica S and Alberti A: Prognostic value of the lymphocyte doubling time in chronic lymphocytic leukemia. *Cancer* 60 (1987): 2712-2716.

## Bibliografia

---

Molina-Arcas M, Bellosillo B, Casado FJ, Montserrat E, Gil J, Colomer D, and Pastor-Anglada M: Fludarabine uptake mechanisms in B-cell chronic lymphocytic leukemia. *Blood* 101 (2003): 2328-2334.

Monni O, Oinonen R, Elonen E, Franssila K, Teerenhovi L, Joensuu H, and Knuutila S: Gain of 3q and deletion of 11q22 are frequent aberrations in mantle cell lymphoma. *Genes Chromosomes.Cancer* 21 (1998): 298-307.

Montserrat E and Rozman C: Chronic lymphocytic leukemia: present status. *Ann.Oncol.* 6 (1995): 219-235.

Montserrat E, Sanchez-Bisono J, Vinolas N, and Rozman C: Lymphocyte doubling time in chronic lymphocytic leukaemia: analysis of its prognostic significance. *Br.J.Haematol.* 62 (1986): 567-575.

Moshynska O, Sankaran K, Pahwa P, and Saxena A: Prognostic significance of a short sequence insertion in the MCL-1 promoter in chronic lymphocytic leukemia. *J.Natl.Cancer Inst.* 96 (2004): 673-682.

Mowen KA, Tang J, Zhu W, Schurter BT, Shuai K, Herschman HR, and David M: Arginine methylation of STAT1 modulates IFN $\alpha$ /beta-induced transcription. *Cell* 104 (2001): 731-741.

Muchmore SW, Sattler M, Liang H, Meadows RP, Harlan JE, Yoon HS, Nettesheim D, Chang BS, Thompson CB, Wong SL, Ng SL, and Fesik SW: X-ray and NMR structure of human Bcl-xL, an inhibitor of programmed cell death. *Nature* 381 (1996): 335-341.

Munzert G, Kirchner D, Stobbe H, Bergmann L, Schmid RM, Dohner H, and Heimpel H: Tumor necrosis factor receptor-associated factor 1 gene overexpression in B-cell chronic lymphocytic leukemia: analysis of NF-kappa B/Rel-regulated inhibitors of apoptosis. *Blood* 100 (2002): 3749-3756.

**-N-**

Nakamura N and Abe M: Richter syndrome in B-cell chronic lymphocytic leukemia. *Pathol.Int.* 53 (2003): 195-203.

Nakanishi C and Toi M: Nuclear factor-kappaB inhibitors as sensitizers to anticancer drugs. *Nat.Rev.Cancer* 5 (2005): 297-309.

Nakano K and Vousden KH: PUMA, a novel proapoptotic gene, is induced by p53. *Mol.Cell* 7 (2001): 683-694.

Nencioni A, Hua F, Dillon CP, Yokoo R, Scheiermann C, Cardone MH, Barbieri E, Rocco I, Garuti A, Wesselborg S, Belka C, Brossart P, Patrone F, and Ballestrero A: Evidence for a protective role of Mcl-1 in proteasome inhibitor-induced apoptosis. *Blood* 105 (2005): 3255-3262.

Nevins JR: Toward an understanding of the functional complexity of the E2F and retinoblastoma families. *Cell Growth Differ.* 9 (1998): 585-593.

Newmeyer DD and Ferguson-Miller S: Mitochondria: releasing power for life and unleashing the machineries of death. *Cell* 112 (2003): 481-490.

Newton AC: Protein kinase C: structural and spatial regulation by phosphorylation, cofactors, and macromolecular interactions. *Chem.Rev.* 101 (2001): 2353-2364.

**-O-**

O'Gorman DM and Cotter TG: Molecular signals in anti-apoptotic survival pathways. *Leukemia* 15 (2001): 21-34.

O'Reilly LA, Print C, Hausmann G, Moriishi K, Cory S, Huang DC, and Strasser A: Tissue expression and subcellular localization of the pro-survival molecule Bcl-w. *Cell Death.Differ.* 8 (2001): 486-494.

Obata T, Endo Y, Murata D, Sakamoto K, Sasaki T. The molecular targets of antitumor 2'-deoxycytidine analogues. *Curr Drug Targets* 4 (2003): 305-313.

Oda E, Ohki R, Murasawa H, Nemoto J, Shibue T, Yamashita T, Tokino T, Taniguchi T, and Tanaka N: Noxa, a BH3-only member of the Bcl-2 family and candidate mediator of p53-induced apoptosis. *Science* 288 (2000): 1053-1058.

Oei SL, Keil C, and Ziegler M: Poly(ADP-ribosylation) and genomic stability. *Biochem.Cell Biol.* 83 (2005): 263-269.

Oliver FJ, de la RG, Rolli V, Ruiz-Ruiz MC, de Murcia G, and Murcia JM: Importance of poly(ADP-ribose) polymerase and its cleavage in apoptosis. Lesson from an uncleavable mutant. *J.Biol.Chem.* 273 (1998): 33533-33539.

Oltersdorf T, Elmore SW, Shoemaker AR, Armstrong RC, Augeri DJ, Belli BA, Bruncko M, Deckwerth TL, Dinges J, Hajduk PJ, Joseph MK, Kitada S, Korsmeyer SJ, Kunzer AR, Letai A, Li C, Mitten MJ, Nettesheim DG, Ng S, Nimmer PM, O'Connor JM, Oleksijew A, Petros AM, Reed JC, Shen W, Tahir SK, Thompson CB, Tomaselli KJ, Wang B, Wendt MD, Zhang H, Fesik SW, and Rosenberg SH: An inhibitor of Bcl-2 family proteins induces regression of solid tumours. *Nature* 435 (2005): 677-681.

Orsini E, Pasquale A, Maggio R, Calabrese E, Mauro FR, Giammartini E, Guarini A, and Foa R: Phenotypic and functional characterization of monocyte-derived dendritic cells in chronic lymphocytic leukaemia patients: influence of neoplastic CD19 cells in vivo and in vitro. *Br.J.Haematol.* 125 (2004): 720-728.

Oscier DG, Gardiner AC, Mould SJ, Glide S, Davis ZA, Ibbotson RE, Corcoran MM, Chapman RM, Thomas PW, Coppleson JA, Orchard JA, and Hamblin TJ: Multivariate analysis of prognostic factors in CLL: clinical stage, IGVH gene mutational status, and loss or mutation of the p53 gene are independent prognostic factors. *Blood* 100 (2002): 1177-1184.

## Bibliografia

---

Oscier D, Fegan C, Hillmen P, Illidge T, Johnson S, Maguire P, Matutes E, and Milligan D: Guidelines on the diagnosis and management of chronic lymphocytic leukaemia. *Br.J.Haematol.* 125 (2004): 294-317.

Ott G, Kalla J, Ott MM, Schryen B, Katzenberger T, Muller JG, and Muller-Hermelink HK: Blastoid variants of mantle cell lymphoma: frequent bcl-1 rearrangements at the major translocation cluster region and tetraploid chromosome clones. *Blood* 89 (1997): 1421-1429.

**-P-**

Packham G and Stevenson FK: Bodyguards and assassins: Bcl-2 family proteins and apoptosis control in chronic lymphocytic leukaemia. *Immunology* 114 (2005): 441-449.

Pastor-Anglada M, Felipe A, and Casado FJ: Transport and mode of action of nucleoside derivatives used in chemical and antiviral therapies. *Trends Pharmacol.Sci.* 19 (1998): 424-430.

Pastor-Anglada M, Molina-Arcas M, Casado FJ, Bellosillo B, Colomer D, and Gil J: Nucleoside transporters in chronic lymphocytic leukaemia. *Leukemia* 18 (2004): 385-393.

Payelle-Brogard B, Magnac C, Alcover A, Roux P, and Dighiero G: Defective assembly of the B-cell receptor chains accounts for its low expression in B-chronic lymphocytic leukaemia. *Br.J.Haematol.* 118 (2002): 976-985.

Pei XY, Dai Y, and Grant S: The proteasome inhibitor bortezomib promotes mitochondrial injury and apoptosis induced by the small molecule Bcl-2 inhibitor HA14-1 in multiple myeloma cells. *Leukemia* 17 (2003): 2036-2045.

Pennycooke M, Chaudary N, Shuralyova I, Zhang Y, and Coe IR: Differential expression of human nucleoside transporters in normal and tumor tissue. *Biochem.Biophys.Res.Commun.* 280 (2001): 951-959.

Pepper C, Hoy T, and Bentley DP: Bcl-2/Bax ratios in chronic lymphocytic leukaemia and their correlation with in vitro apoptosis and clinical resistance. *Br.J.Cancer* 76 (1997): 935-938.

Perez-Galan P, Roue G, Villamor N, Montserrat E, Campo E, and Colomer D: The proteasome inhibitor bortezomib induces apoptosis in mantle-cell lymphoma through generation of ROS and Noxa activation independent of p53 status. *Blood* 107 (2006): 257-264.

Petersen AJ, Brown RD, Gibson J, Pope B, Luo XF, Schutz L, Wiley JS, and Joshua DE: Nucleoside transporters, bcl-2 and apoptosis in CLL cells exposed to nucleoside analogues in vitro. *Eur.J.Haematol.* 56 (1996): 213-220.

Petiniot LK, Weaver Z, Barlow C, Shen R, Eckhaus M, Steinberg SM, Ried T, Wynshaw-Boris A, and Hodes RJ: Recombinase-activating gene (RAG) 2-mediated V(D)J recombination is not essential for tumorigenesis in Atm-deficient mice. *Proc.Natl.Acad.Sci.U.S.A* 97 (2000): 6664-6669.

Petros AM, Medek A, Nettesheim DG, Kim DH, Yoon HS, Swift K, Matayoshi ED, Oltersdorf T, and Fesik SW: Solution structure of the antiapoptotic protein bcl-2. *Proc.Natl.Acad.Sci.U.S.A* 98 (2001): 3012-3017.

Pettitt AR: Mechanism of action of purine analogues in chronic lymphocytic leukaemia. *Br.J.Haematol.* 121 (2003): 692-702.

Pham LV, Tamayo AT, Yoshimura LC, Lo P, and Ford RJ: Inhibition of constitutive NF-kappa B activation in mantle cell lymphoma B cells leads to induction of cell cycle arrest and apoptosis. *J.Immunol.* 171 (2003): 88-95.

Pim D, Massimi P, Dilworth SM, and Banks L: Activation of the protein kinase B pathway by the HPV-16 E7 oncoprotein occurs through a mechanism involving interaction with PP2A. *Oncogene* 2005):

Pinyol M, Hernandez L, Cazorla M, Balbin M, Jares P, Fernandez PL, Montserrat E, Cardesa A, Lopez-Otin C, and Campo E: Deletions and loss of expression of p16INK4a and p21Waf1 genes are associated with aggressive variants of mantle cell lymphomas. *Blood* 89 (1997): 272-280.

Pinyol M, Cobo F, Bea S, Jares P, Nayach I, Fernandez PL, Montserrat E, Cardesa A, and Campo E: p16(INK4a) gene inactivation by deletions, mutations, and hypermethylation is associated with transformed and aggressive variants of non-Hodgkin's lymphomas. *Blood* 91 (1998): 2977-2984.

Pinyol M, Hernandez L, Martinez A, Cobo F, Hernandez S, Bea S, Lopez-Guillermo A, Nayach I, Palacin A, Nadal A, Fernandez PL, Montserrat E, Cardesa A, and Campo E: INK4a/ARF locus alterations in human non-Hodgkin's lymphomas mainly occur in tumors with wild-type p53 gene. *Am.J.Pathol.* 156 (2000): 1987-1996.

Pistoia V: Production of cytokines by human B cells in health and disease. *Immunol.Today* 18 (1997): 343-350.

Plunkett W, Huang P, Xu YZ, Heinemann V, Grunewald R, and Gandhi V: Gemcitabine: metabolism, mechanisms of action, and self-potential. *Semin.Oncol.* 22 (1995): 3-10.

Pressacco J, Wiley JS, Jamieson GP, Erlichman C, and Hedley DW: Modulation of the equilibrative nucleoside transporter by inhibitors of DNA synthesis. *Br.J.Cancer* 72 (1995): 939-942.

Puthalakath H, Huang DC, O'Reilly LA, King SM, and Strasser A: The proapoptotic activity of the Bcl-2 family member Bim is regulated by interaction with the dynein motor complex. *Mol.Cell* 3 (1999): 287-296.

Puthalakath H, Villunger A, O'Reilly LA, Beaumont JG, Coultas L, Cheney RE, Huang DC, and Strasser A: Bmf: a proapoptotic BH3-only protein regulated by interaction with the myosin V actin motor complex, activated by anoikis. *Science* 293 (2001): 1829-1832.

Puthalakath H and Strasser A: Keeping killers on a tight leash: transcriptional and post-translational control of the pro-apoptotic activity of BH3-only proteins. *Cell Death.Differ.* 9 (2002): 505-512.



### -Q-

Quintanilla-Martinez L, Thieblemont C, Fend F, Kumar S, Pinyol M, Campo E, Jaffe ES, and Raffeld M: Mantle cell lymphomas lack expression of p27Kip1, a cyclin-dependent kinase inhibitor. *Am.J.Pathol.* 153 (1998): 175-182.

### -R-

Raff MC: Social controls on cell survival and cell death. *Nature* 356 (1992): 397-400.

Rai K and Hallek M: Future prospects for alemtuzumab (MabCampath). *Med.Oncol.* 19 Suppl (2002): S57-S63.

Rai KR, Sawitsky A, Cronkite EP, Chanana AD, Levy RN, and Pasternack BS: Clinical staging of chronic lymphocytic leukemia. *Blood* 46 (1975): 219-234.

Rasheed ZA and Rubin EH: Mechanisms of resistance to topoisomerase I-targeting drugs. *Oncogene* 22 (2003): 7296-7304.

Rawstron AC, Green MJ, Kuzmicki A, Kennedy B, Fenton JA, Evans PA, O'Connor SJ, Richards SJ, Morgan GJ, Jack AS, and Hillmen P: Monoclonal B lymphocytes with the characteristics of "indolent" chronic lymphocytic leukemia are present in 3.5% of adults with normal blood counts. *Blood* 100 (2002): 635-639.

Reed JC: Molecular biology of chronic lymphocytic leukemia: implications for therapy. *Semin.Hematol.* 35 (1998a): 3-13.

Reed JC: Bcl-2 family proteins. *Oncogene* 17 (1998b): 3225-3236.

Reed JC, Kitada S, Kim Y, and Byrd J: Modulating apoptosis pathways in low-grade B-cell malignancies using biological response modifiers. *Semin.Oncol.* 29 (2002): 10-24.

Reed JC: Apoptosis-targeted therapies for cancer. *Cancer Cell* 3 (2003): 17-22.

Reed JC and Pellecchia M: Apoptosis-based therapies for hematologic malignancies. *Blood* 106 (2005): 408-418.

Reiman T, Graham KA, Wong J, Belch AR, Coupland R, Young J, Cass CE, and Mackey JR: Mechanisms of resistance to nucleoside analogue chemotherapy in mantle cell lymphoma: a molecular case study. *Leukemia* 16 (2002): 1886-1887.

Ritzel MW, Yao SY, Huang MY, Elliott JF, Cass CE, and Young JD: Molecular cloning and functional expression of cDNAs encoding a human Na<sup>+</sup>-nucleoside cotransporter (hCNT1). *Am.J.Physiol* 272 (1997): C707-C714.

Ritzel MW, Yao SY, Ng AM, Mackey JR, Cass CE, and Young JD: Molecular cloning, functional expression and chromosomal localization of a cDNA encoding a human Na<sup>+</sup>/nucleoside cotransporter (hCNT2) selective for purine nucleosides and uridine. *Mol.Membr.Biol.* 15 (1998): 203-211.

Ritzel MW, Ng AM, Yao SY, Graham K, Loewen SK, Smith KM, Ritzel RG, Mowles DA, Carpenter P, Chen XZ, et al: Molecular identification and characterization of novel human and mouse concentrative Na<sup>+</sup>-nucleoside cotransporter proteins (hCNT3 and mCNT3) broadly selective for purine and pyrimidine nucleosides (system cib). *J.Biol.Chem.* 276 (2001): 2914-2927.

Robak T: Therapy of chronic lymphocytic leukemia with purine analogs and monoclonal antibodies. *Transfus.Apher.Sci.* 32 (2005): 33-44.

Rosenwald A, Wright G, Wiestner A, Chan WC, Connors JM, Campo E, Gascoyne RD, Grogan TM, Muller-Hermelink HK, Smeland EB, et al: The proliferation gene expression signature is a quantitative integrator of oncogenic events that predicts survival in mantle cell lymphoma. *Cancer Cell* 3 (2003): 185-197.

Rozman C, Montserrat E, Rodriguez-Fernandez JM, Ayats R, Vallespi T, Parody R, Rios A, Prados D, Morey M, Gomis F, and .: Bone marrow histologic pattern--the best single prognostic parameter in chronic lymphocytic leukemia: a multivariate survival analysis of 329 cases. *Blood* 64 (1984): 642-648.

Rozman C and Montserrat E: Chronic lymphocytic leukemia. *N.Engl.J.Med.* 333 (1995): 1052-1057.

Rubio-Moscardo F, Climent J, Siebert R, Piris MA, Martin-Subero JI, Nielander I, Garcia-Conde J, Dyer MJ, Terol MJ, Pinkel D, and Martinez-Climent JA: Mantle-cell lymphoma genotypes identified with CGH to BAC microarrays define a leukemic subgroup of disease and predict patient outcome. *Blood* 105 (2005): 4445-4454.

**-S-**

Salaverria I, Perez-Galan P, Colomer D, and Campo E: Mantle cell lymphoma: from pathology and molecular pathogenesis to new therapeutic perspectives. *Haematologica* 91 (2006): 11-16.

Salvesen GS: Caspases and apoptosis. *Essays Biochem.* 38 (2002): 9-19.

Sampath D, Rao VA, and Plunkett W: Mechanisms of apoptosis induction by nucleoside analogs. *Oncogene* 22 (2003): 9063-9074.

Sanz C, Benito A, Inohara N, Ekhterae D, Nunez G, and Fernandez-Luna JL: Specific and rapid induction of the proapoptotic protein Hrk after growth factor withdrawal in hematopoietic progenitor cells. *Blood* 95 (2000): 2742-2747.

## Bibliografia

---

Sattler M, Liang H, Nettesheim D, Meadows RP, Harlan JE, Eberstadt M, Yoon HS, Shuker SB, Chang BS, Minn AJ, Thompson CB, and Fesik SW: Structure of Bcl-xL-Bak peptide complex: recognition between regulators of apoptosis. *Science* 275 (1997): 983-986.

Saxena A, Viswanathan S, Moshynska O, Tandon P, Sankaran K, and Sheridan DP: Mcl-1 and Bcl-2/Bax ratio are associated with treatment response but not with Rai stage in B-cell chronic lymphocytic leukemia. *Am.J.Hematol.* 75 (2004): 22-33.

Scaffidi C, Schmitz I, Krammer PH, and Peter ME: The role of c-FLIP in modulation of CD95-induced apoptosis. *J.Biol.Chem.* 274 (1999): 1541-1548.

Schimmer AD, Welsh K, Pinilla C, Wang Z, Krajewska M, Bonneau MJ, Pedersen IM, Kitada S, Scott FL, Bailly-Maitre B, Glinsky G, Scudiero D, Sausville E, Salvesen G, Nefzi A, Ostresh JM, Houghten RA, and Reed JC: Small-molecule antagonists of apoptosis suppressor XIAP exhibit broad antitumor activity. *Cancer Cell* 5 (2004): 25-35.

Schlegelberger B, Zwingers T, Harder L, Nowotny H, Siebert R, Vesely M, Bartels H, Sonnen R, Hopfinger G, Nader A, Ott G, Muller-Hermelink K, Feller A, and Heinz R: Clinicopathogenetic significance of chromosomal abnormalities in patients with blastic peripheral B-cell lymphoma. Kiel-Wien-Lymphoma Study Group. *Blood* 94 (1999): 3114-3120.

Schlette E, Rassidakis GZ, Canoz O, and Medeiros LJ: Expression of bcl-3 in chronic lymphocytic leukemia correlates with trisomy 12 and abnormalities of chromosome 19. *Am.J.Clin.Pathol.* 123 (2005): 465-471.

Schliep S, Decker T, Schneller F, Wagner H, and Hacker G: Functional evaluation of the role of inhibitor of apoptosis proteins in chronic lymphocytic leukemia. *Exp.Hematol.* 32 (2004): 556-562.

Schmid M, Malicki D, Nobori T, Rosenbach MD, Campbell K, Carson DA, and Carrera CJ: Homozygous deletions of methylthioadenosine phosphorylase (MTAP) are more frequent than p16INK4A (CDKN2) homozygous deletions in primary non-small cell lung cancers (NSCLC). *Oncogene* 17 (1998): 2669-2675.

Schrader C, Meusers P, Brittinger G, Teymoortash A, Siebmann JU, Janssen D, Parwaresch R, and Tiemann M: Topoisomerase IIalpha expression in mantle cell lymphoma: a marker of cell proliferation and a prognostic factor for clinical outcome. *Leukemia* 18 (2004): 1200-1206.

Schroers R, Griesinger F, Trumper L, Haase D, Kulle B, Klein-Hitpass L, Sellmann L, Duhrsen U, and Durig J: Combined analysis of ZAP-70 and CD38 expression as a predictor of disease progression in B-cell chronic lymphocytic leukemia. *Leukemia* 19 (2005): 750-758.

Schuler M and Green DR: Mechanisms of p53-dependent apoptosis. *Biochem.Soc.Trans.* 29 (2001): 684-688.

Schwartz LM and Osborne BA: Ced-3/ICE: evolutionarily conserved regulation of cell death. *Bioessays* 16 (1994): 387-389.

Scorrano L, Ashiya M, Buttle K, Weiler S, Oakes SA, Mannella CA, and Korsmeyer SJ: A distinct pathway remodels mitochondrial cristae and mobilizes cytochrome c during apoptosis. *Dev.Cell* 2 (2002): 55-67.

Shan D, Ledbetter JA, and Press OW: Apoptosis of malignant human B cells by ligation of CD20 with monoclonal antibodies. *Blood* 91 (1998): 1644-1652.

Sherr CJ and Roberts JM: CDK inhibitors: positive and negative regulators of G1-phase progression. *Genes Dev.* 13 (1999): 1501-1512.

Sherr CJ: The Pezcoller lecture: cancer cell cycles revisited. *Cancer Res.* 60 (2000): 3689-3695.

Shimizu S, Narita M, and Tsujimoto Y: Bcl-2 family proteins regulate the release of apoptogenic cytochrome c by the mitochondrial channel VDAC. *Nature* 399 (1999): 483-487.

Shimizu S, Konishi A, Kodama T, and Tsujimoto Y: BH4 domain of antiapoptotic Bcl-2 family members closes voltage-dependent anion channel and inhibits apoptotic mitochondrial changes and cell death. *Proc.Natl.Acad.Sci.U.S.A* 97 (2000): 3100-3105.

Shinjo T, Kuribara R, Inukai T, Hosoi H, Kinoshita T, Miyajima A, Houghton PJ, Look AT, Ozawa K, and Inaba T: Downregulation of Bim, a proapoptotic relative of Bcl-2, is a pivotal step in cytokine-initiated survival signaling in murine hematopoietic progenitors. *Mol.Cell Biol.* 21 (2001): 854-864.

Sindelarova L, Michalova K, Zemanova Z, Ransdorfova S, Brezinova J, Pekova S, Schwarz J, Karban J, and Cmunt E: Incidence of chromosomal anomalies detected with FISH and their clinical correlations in B-chronic lymphocytic leukemia. *Cancer Genet.Cytogenet.* 160 (2005): 27-34.

Slee EA, Adrain C, and Martin SJ: Serial killers: ordering caspase activation events in apoptosis. *Cell Death.Differ.* 6 (1999a): 1067-1074.

Slee EA, Harte MT, Kluck RM, Wolf BB, Casiano CA, Newmeyer DD, Wang HG, Reed JC, Nicholson DW, Alnemri ES, Green DR, and Martin SJ: Ordering the cytochrome c-initiated caspase cascade: hierarchical activation of caspases-2, -3, -6, -7, -8, and -10 in a caspase-9-dependent manner. *J.Cell Biol.* 144 (1999b): 281-292.

Slee EA, Zhu H, Chow SC, MacFarlane M, Nicholson DW, and Cohen GM: Benzyloxycarbonyl-Val-Ala-Asp (OMe) fluoromethylketone (Z-VAD.FMK) inhibits apoptosis by blocking the processing of CPP32. *Biochem.J.* 315 ( Pt 1) (1996): 21-24.

Solenthaler M, Matutes E, Brito-Babapulle V, Morilla R, and Catovsky D: p53 and mdm2 in mantle cell lymphoma in leukemic phase. *Haematologica* 87 (2002): 1141-1150.

Solomou EE, Sfikakis PP, Kotsi P, Papaioannou M, Karali V, Vervessou E, Hoffbrand AV, and Panayiotidis P: 13q deletion in chronic lymphocytic leukemia: characterization of E4.5, a novel chromosome condensation regulator-like guanine nucleotide exchange factor. *Leuk.Lymphoma* 44 (2003): 1579-1585.

Spratlin J, Sangha R, Glubrecht D, Dabbagh L, Young JD, Dumontet C, Cass C, Lai R, and Mackey JR: The absence of human equilibrative nucleoside transporter 1 is associated with reduced survival in patients with gemcitabine-treated pancreas adenocarcinoma. *Clin.Cancer Res.* 10 (2004): 6956-6961.

## Bibliografia

---

Stahl M, Dijkers PF, Kops GJ, Lens SM, Coffey PJ, Burgering BM, and Medema RH: The forkhead transcription factor FoxO regulates transcription of p27Kip1 and Bim in response to IL-2. *J.Immunol.* 168 (2002): 5024-5031.

Stam RW, den Boer ML, Meijerink JP, Ebus ME, Peters GJ, Noordhuis P, Janka-Schaub GE, Armstrong SA, Korsmeyer SJ, and Pieters R: Differential mRNA expression of Ara-C-metabolizing enzymes explains Ara-C sensitivity in MLL gene-rearranged infant acute lymphoblastic leukemia. *Blood* 101 (2003): 1270-1276.

Stamatopoulos K, Kosmas C, Belessi C, Kyriazopoulos P, Papadaki T, Anagnostou D, and Loukopoulos D: Molecular analysis of bcl-1/IgH junctional sequences in mantle cell lymphoma: potential mechanism of the t(11;14) chromosomal translocation. *Br.J.Haematol.* 105 (1999): 190-197.

Stambolic V, Suzuki A, de la Pompa JL, Brothers GM, Mirtsos C, Sasaki T, Ruland J, Penninger JM, Siderovski DP, and Mak TW: Negative regulation of PKB/Akt-dependent cell survival by the tumor suppressor PTEN. *Cell* 95 (1998): 29-39.

Stankovic T, Hubank M, Cronin D, Stewart GS, Fletcher D, Bignell CR, Alvi AJ, Austen B, Weston VJ, Fegan C, Byrd PJ, Moss PA, and Taylor AM: Microarray analysis reveals that. *Blood* 103 (2004): 291-300.

Stankovic T, Stewart GS, Fegan C, Biggs P, Last J, Byrd PJ, Keenan RD, Moss PA, and Taylor AM: Ataxia telangiectasia mutated-deficient B-cell chronic lymphocytic leukemia occurs in pregerminal center cells and results in defective damage response and unrepaired chromosome damage. *Blood* 99 (2002): 300-309.

Stankovic T, Weber P, Stewart G, Bedenham T, Murray J, Byrd PJ, Moss PA, and Taylor AM: Inactivation of ataxia telangiectasia mutated gene in B-cell chronic lymphocytic leukaemia. *Lancet* 353 (1999): 26-29.

Stevenson FK and Caligaris-Cappio F: Chronic lymphocytic leukemia: revelations from the B-cell receptor. *Blood* 103 (2004): 4389-4395.

Stilgenbauer S, Winkler D, Ott G, Schaffner C, Leupolt E, Bentz M, Moller P, Muller-Hermelink HK, James MR, Lichter P, and Dohner H: Molecular characterization of 11q deletions points to a pathogenic role of the ATM gene in mantle cell lymphoma. *Blood* 94 (1999): 3262-3264.

Stilgenbauer S, Bullinger L, Lichter P, and Dohner H: Genetics of chronic lymphocytic leukemia: genomic aberrations and V(H) gene mutation status in pathogenesis and clinical course. *Leukemia* 16 (2002): 993-1007.

Susin SA, Lorenzo HK, Zamzami N, Marzo I, Snow BE, Brothers GM, Mangion J, Jacotot E, Costantini P, Loeffler M, Larochette N, Goodlett DR, Aebersold R, Siderovski DP, Penninger JM, and Kroemer G: Molecular characterization of mitochondrial apoptosis-inducing factor. *Nature* 397 (1999): 441-446.

Susin SA, Daugas E, Ravagnan L, Samejima K, Zamzami N, Loeffler M, Costantini P, Ferri KF, Irinopoulou T, Prevost MC, Brothers G, Mak TW, Penninger J, Earnshaw WC, and Kroemer G: Two distinct pathways leading to nuclear apoptosis. *J.Exp.Med.* 192 (2000): 571-580.

**-T-**

Takayama S, Bimston DN, Matsuzawa S, Freeman BC, Imae-Sempe C, Xie Z, Morimoto RI, and Reed JC: BAG-1 modulates the chaperone activity of Hsp70/Hsc70. *EMBO J.* 16 (1997): 4887-4896.

Thome M, Schneider P, Hofmann K, Fickenscher H, Meinkoth E, Neipel F, Mattmann C, Burns K, Bodmer JL, Schroter M, Scaffidi C, Krammer PH, Peter ME, and Tschopp J: Viral FLICE-inhibitory proteins (FLIPs) prevent apoptosis induced by death receptors. *Nature* 386 (1997): 517-521.

Thornberry NA, Bull HG, Calaycay JR, Chapman KT, Howard AD, Kostura MJ, Miller DK, Molineaux SM, Weidner JR, Aunins J, and J. Drenth: A novel heterodimeric cysteine protease is required for interleukin-1 beta processing in monocytes. *Nature* 356 (1992): 768-774.

Thornton PD, Gruszka-Westwood AM, Hamoudi RA, Atkinson S, Kaczmarek P, Morilla RM, Hilditch BL, A'Hern R, Matutes E, and Catovsky D: Characterisation of TP53 abnormalities in chronic lymphocytic leukaemia. *Hematol.J.* 5 (2004): 47-54.

Townsend PA, Cutress RI, Sharp A, Brimmell M, and Packham G: BAG-1: a multifunctional regulator of cell growth and survival. *Biochim.Biophys.Acta* 1603 (2003): 83-98.

Tsimberidou AM and Keating MJ: Richter syndrome: biology, incidence, and therapeutic strategies. *Cancer* 103 (2005): 216-228.

Tsujimoto Y, Finger LR, Yunis J, Nowell PC, and Croce CM: Cloning of the chromosome breakpoint of neoplastic B cells with the t(14;18) chromosome translocation. *Science* 226 (1984): 1097-1099.

Tsujimoto Y, Gorham J, Cossman J, Jaffe E, and Croce CM: The t(14;18) chromosome translocations involved in B-cell neoplasms result from mistakes in VDJ joining. *Science* 229 (1985): 1390-1393.

**-V-**

Vaux DL and Strasser A: The molecular biology of apoptosis. *Proc.Natl.Acad.Sci.U.S.A* 93 (1996): 2239-2244.

Verhagen AM, Ekert PG, Pakusch M, Silke J, Connolly LM, Reid GE, Moritz RL, Simpson RJ, and Vaux DL: Identification of DIABLO, a mammalian protein that promotes apoptosis by binding to and antagonizing IAP proteins. *Cell* 102 (2000): 43-53.

Verma S, Zhao LJ, and Chinnadurai G: Phosphorylation of the pro-apoptotic protein BIK: mapping of phosphorylation sites and effect on apoptosis. *J.Biol.Chem.* 276 (2001): 4671-4676.

## Bibliografia

---

Vousden KH and Lu X: Live or let die: the cell's response to p53. *Nat.Rev.Cancer* 2 (2002): 594-604.

### -W-

Wajant H: The Fas signaling pathway: more than a paradigm. *Science* 296 (2002): 1635-1636.

Walensky LD, Kung AL, Escher I, Malia TJ, Barbuto S, Wright RD, Wagner G, Verdine GL, and Korsmeyer SJ: Activation of apoptosis in vivo by a hydrocarbon-stapled BH3 helix. *Science* 305 (2004): 1466-1470.

Wang J, Su SF, Dresser MJ, Schaner ME, Washington CB, and Giacomini KM: Na(+)-dependent purine nucleoside transporter from human kidney: cloning and functional characterization. *Am.J.Physiol* 273 (1997): F1058-F1065.

Wang JL, Liu D, Zhang ZJ, Shan S, Han X, Srinivasula SM, Croce CM, Alnemri ES, and Huang Z: Structure-based discovery of an organic compound that binds Bcl-2 protein and induces apoptosis of tumor cells. *Proc.Natl.Acad.Sci.U.S.A* 97 (2000): 7124-7129.

Wang X: The expanding role of mitochondria in apoptosis. *Genes Dev.* 15 (2001): 2922-2933.

Wang Z, Cuddy M, Samuel T, Welsh K, Schimmer A, Hanai F, Houghten R, Pinilla C, and Reed JC: Cellular, biochemical, and genetic analysis of mechanism of small molecule IAP inhibitors. *J.Biol.Chem.* 279 (2004): 48168-48176.

Ward JL, Sherali A, Mo ZP, and Tse CM: Kinetic and pharmacological properties of cloned human equilibrative nucleoside transporters, ENT1 and ENT2, stably expressed in nucleoside transporter-deficient PK15 cells. Ent2 exhibits a low affinity for guanosine and cytidine but a high affinity for inosine. *J.Biol.Chem.* 275 (2000): 8375-8381.

Wei MC, Zong WX, Cheng EH, Lindsten T, Panoutsakopoulou V, Ross AJ, Roth KA, MacGregor GR, Thompson CB, and Korsmeyer SJ: Proapoptotic BAX and BAK: a requisite gateway to mitochondrial dysfunction and death. *Science* 292 (2001): 727-730.

Weisenburger DD and Armitage JO: Mantle cell lymphoma-- an entity comes of age. *Blood* 87 (1996): 4483-4494.

Welzel N, Le T, Marculescu R, Mitterbauer G, Chott A, Pott C, Kneba M, Du MQ, Kusec R, Drach J, Raderer M, Mannhalter C, Lechner K, Nadel B, and Jaeger U: Templated nucleotide addition and immunoglobulin JH-gene utilization in t(11;14) junctions: implications for the mechanism of translocation and the origin of mantle cell lymphoma. *Cancer Res.* 61 (2001): 1629-1636.

Wheatley SP and McNeish IA: Survivin: a protein with dual roles in mitosis and apoptosis. *Int.Rev.Cytol.* 247 (2005): 35-88.

Widmann C, Gibson S, and Johnson GL: Caspase-dependent cleavage of signaling proteins during apoptosis. A turn-off mechanism for anti-apoptotic signals. *J.Biol.Chem.* 273 (1998): 7141-7147.

Wierda WG, Kipps TJ, and Keating MJ: Novel immune-based treatment strategies for chronic lymphocytic leukemia. *J.Clin.Oncol.* 23 (2005): 6325-6332.

Wiestner A: More ZAP for chronic lymphocytic leukemia (CLL). *Blood* 105 (2005): 1839-1840.

Wiley JS, Jones SP, Sawyer WH, and Paterson AR: Cytosine arabinoside influx and nucleoside transport sites in acute leukemia. *J.Clin.Invest* 69 (1982): 479-489.

Willis SN, Chen L, Dewson G, Wei A, Naik E, Fletcher JI, Adams JM, and Huang DC: Proapoptotic Bak is sequestered by Mcl-1 and Bcl-xL, but not Bcl-2, until displaced by BH3-only proteins. *Genes Dev.* 19 (2005): 1294-1305.

Witzig TE: Current treatment approaches for mantle-cell lymphoma. *J.Clin.Oncol.* 23 (2005): 6409-6414.

Wright AM, Gati WP, and Paterson AR: Enhancement of retention and cytotoxicity of 2-chlorodeoxyadenosine in cultured human leukemic lymphoblasts by nitrobenzylthioinosine, an inhibitor of equilibrative nucleoside transport. *Leukemia* 14 (2000): 52-60.

Wright AM, Paterson AR, Sowa B, Akabutu JJ, Grundy PE, and Gati WP: Cytotoxicity of 2-chlorodeoxyadenosine and arabinosylcytosine in leukaemic lymphoblasts from paediatric patients: significance of cellular nucleoside transporter content. *Br.J.Haematol.* 116 (2002): 528-537.

Wu X and Deng Y: Bax and BH3-domain-only proteins in p53-mediated apoptosis. *Front Biosci.* 7 (2002): d151-d156.

**-Y-**

Yang Y, Fang S, Jensen JP, Weissman AM, and Ashwell JD: Ubiquitin protein ligase activity of IAPs and their degradation in proteasomes in response to apoptotic stimuli. *Science* 288 (2000): 874-877.

Yardley DA: Integrating gemcitabine into breast cancer therapy. *Oncology (Williston.Park)* 18 (2004): 37-48.

Yu J, Batova A, Shao L, Carrera CJ, and Yu AL: Presence of methylthioadenosine phosphorylase (MTAP) in hematopoietic stem/progenitor cells: its therapeutic implication for MTAP (-) malignancies. *Clin.Cancer Res.* 3 (1997): 433-438.

Yuan J, Shaham S, Ledoux S, Ellis HM, and Horvitz HR: The *C. elegans* cell death gene *ced-3* encodes a protein similar to mammalian interleukin-1 beta-converting enzyme. *Cell* 75 (1993): 641-652.

Yuan J: Transducing signals of life and death. *Curr.Opin.Cell Biol.* 9 (1997): 247-251.



## Bibliografia

---

Yuille MR, Matutes E, Marossy A, Hilditch B, Catovsky D, and Houlston RS: Familial chronic lymphocytic leukaemia: a survey and review of published studies. *Br.J.Haematol.* 109 (2000): 794-799.

### -Z-

Zha J, Harada H, Osipov K, Jockel J, Waksman G, and Korsmeyer SJ: BH3 domain of BAD is required for heterodimerization with BCL-XL and pro-apoptotic activity. *J.Biol.Chem.* 272 (1997): 24101-24104.

Zha J, Weiler S, Oh KJ, Wei MC, and Korsmeyer SJ: Posttranslational N-myristoylation of BID as a molecular switch for targeting mitochondria and apoptosis. *Science* 290 (2000): 1761-1765.

Zhao R, Gish K, Murphy M, Yin Y, Notterman D, Hoffman WH, Tom E, Mack DH, and Levine AJ: Analysis of p53-regulated gene expression patterns using oligonucleotide arrays. *Genes Dev.* 14 (2000): 981-993.

Zhao WL, Daneshpouy ME, Mounier N, Briere J, Leboeuf C, Plassa LF, Turpin E, Cayuela JM, Ameisen JC, Gisselbrecht C, and Janin A: Prognostic significance of bcl-xL gene expression and apoptotic cell counts in follicular lymphoma. *Blood* 103 (2004): 695-697.

Zhou P, Qian L, Kozopas KM, and Craig RW: Mcl-1, a Bcl-2 family member, delays the death of hematopoietic cells under a variety of apoptosis-inducing conditions. *Blood* 89 (1997): 630-643.

Zong WX, Lindsten T, Ross AJ, MacGregor GR, and Thompson CB: BH3-only proteins that bind pro-survival Bcl-2 family members fail to induce apoptosis in the absence of Bax and Bak. *Genes Dev.* 15 (2001): 1481-1486.

Zou H, Henzel WJ, Liu X, Lutschg A, and Wang X: Apaf-1, a human protein homologous to *C. elegans* CED-4, participates in cytochrome c-dependent activation of caspase-3. *Cell* 90 (1997): 405-413.