

UNIVERSITAT DE BARCELONA

DEPARTAMENT DE CIENCIAS

MORFOLÓGIQUES I

ODONTO-ESTOMATOLOGIA

TESIS DOCTORAL

**"ESTUDIO RUGOSIMÉTRICO DE LA
SUPERFICIE DE LA CERÁMICA
FELDESPÁTICA UTILIZADA EN LA
ELABORACIÓN DE RESTAURACIONES
CERAMO-METÁLICAS"**

PRESENTADA POR EL LICENCIADO EN

MEDICINA Y CIRUGÍA:

JOSÉ MARÍA ANGLADA CANTARELL

DIRECTORES:

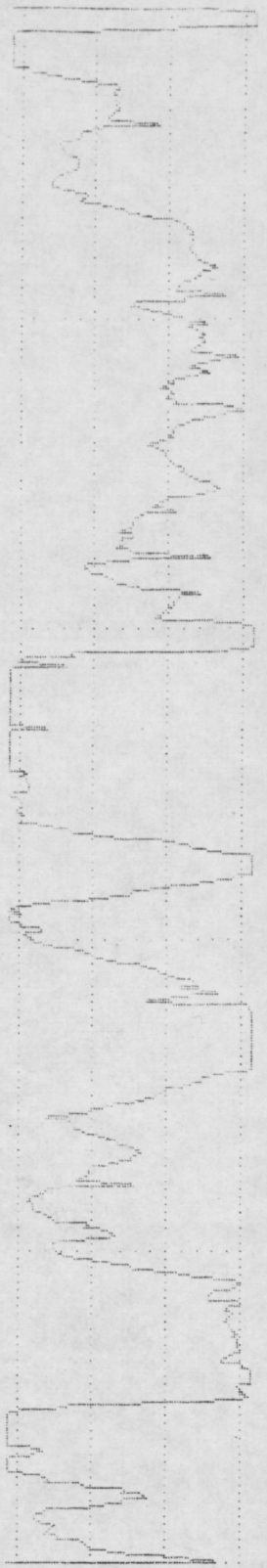
PROF. F. J. GASCÓN MAYORDOMO (E.P.D.)

PROF. J. SALSENCH CABRÉ

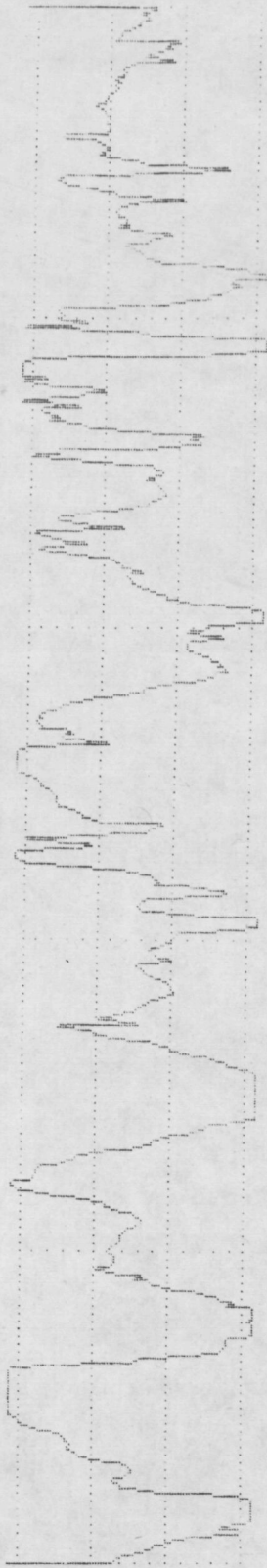
BARCELONA JUNIO 1992



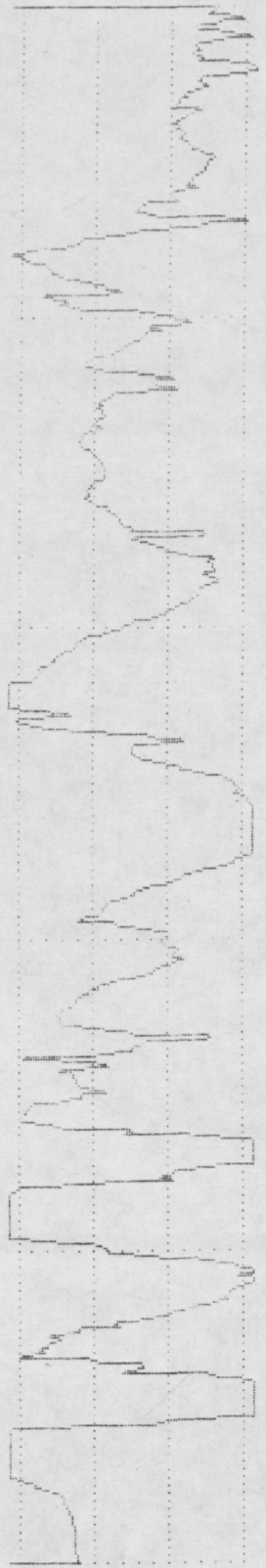
APENDICE



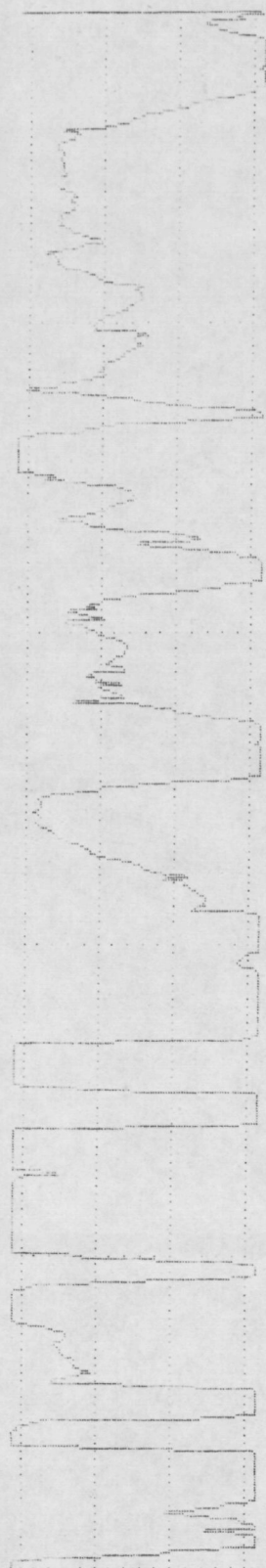
PERTHOMETER M4P
 OBJ. IPB 10
 DAT.
 #
 LT 4.8 MM
 RA 5.64 μM
 RZ 27.20 μM
 RMRX 40.00 μM
 RPM 14.84 μM
 PC<1.3> 025 /CM



PERTHOMETER M4P
 OBJ. IPB 16
 DAT.
 #
 LT 4.8 MM
 RA 4.35 μM
 RZ 22.14 μM
 RMRX 27.52 μM
 RPM 11.93 μM
 PC<1.3> 037 /CM



PERTHOMETER M4P
 OBJ. IPB ΔC
 DAT.
 #
 LT 4.8 MM
 RA 5.19 μM
 RZ 26.56 μM
 RMRX 58.24 μM
 RPM 15.29 μM
 PC<1.3> 027 /CM



PERTHOMETER M4P
 OBJ. IPB 20
 DAT.
 #
 LT 4.8 MM
 RA 8.15 μM
 RZ 36.73 μM
 RMRX 53.12 μM
 RPM 21.88 μM
 PC<1.3> 022 /CM

PERTHOMETER M4F
 DAT.
 OBJ. IPB 2b
 #
 LT 4.8 MM
 RA 5.23 MM
 RZ 25.40 MM
 RMAX 44.80 MM
 RPM 11.96 MM
 PC<1.3> 040 /CM

PERTHOMETER M4F
 DAT.
 OBJ. IPB 2c
 #
 LT 4.8 MM
 RA 4.75 MM
 RZ 25.28 MM
 RMAX 33.60 MM
 RPM 14.84 MM
 PC<1.3> 045 /CM

PERTHOMETER M4F
 DAT.
 OBJ. IPB 3a
 #
 LT 4.8 MM
 RA 6.07 MM
 RZ 26.68 MM
 RMAX 33.60 MM
 RPM 13.12 MM
 PC<1.3> 020 /CM

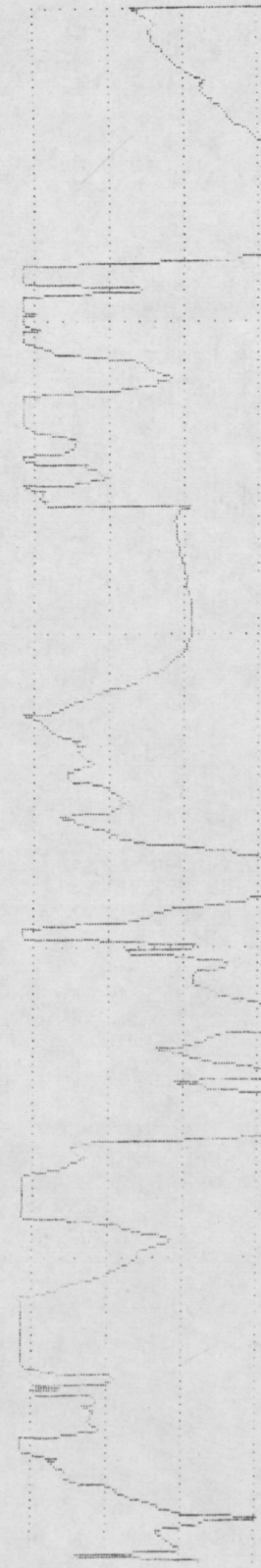
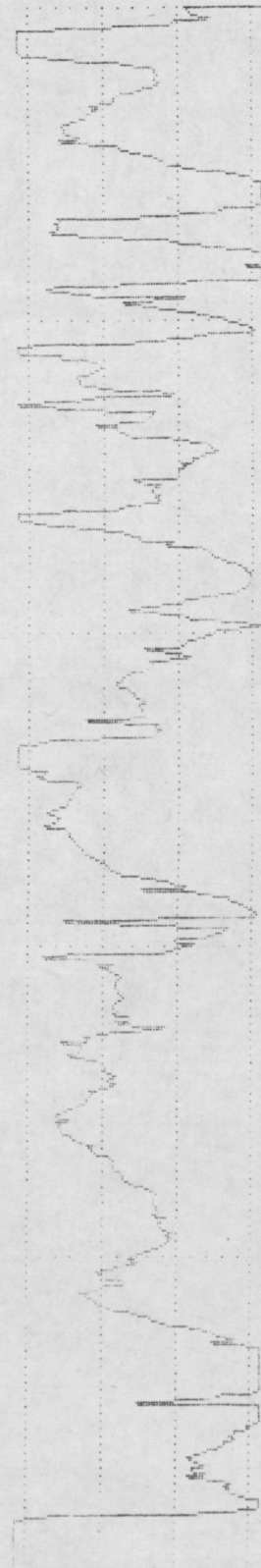
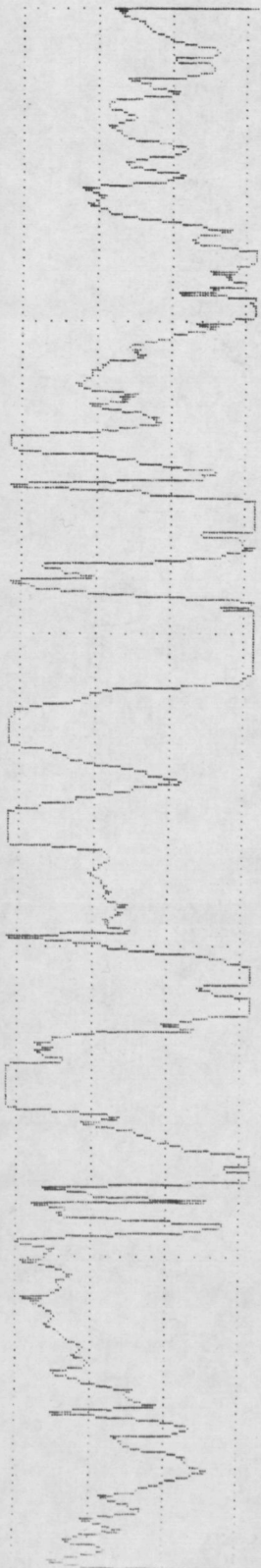
PERTHOMETER M4F
 DAT.
 OBJ. IPB 3b
 #
 LT 4.8 MM
 RA 7.56 MM
 RZ 30.78 MM
 RMAX 46.08 MM
 RPM 16.25 MM
 PC<1.3> 027 /CM

VER 5 MM
 HOR LC .80 MM

VER 5 MM
 HOR LC .80 MM

VER 5 MM
 HOR LC .80 MM

VER 5 MM
 HOR LC .80 MM



PERTHOMETER M4P
DAT.
OBJ. IPB 3c

LT 4.8 MM
RA 6.14 UM
RZ 29.88 UM
RMAX 40.64 UM
RPM 18.04 UM
PC<1.3> 025 /CM

PERTHOMETER M4P
DAT.
OBJ. IPB 4a

LT 4.8 MM
RA 6.24 UM
RZ 30.91 UM
RMAX 47.68 UM
RPM 18.04 UM
PC<1.3> 042 /CM

PERTHOMETER M4P
DAT.
OBJ. IPB 4b

LT 4.8 MM
RA 5.79 UM
RZ 27.32 UM
RMAX 37.76 UM
RPM 14.65 UM
PC<1.3> 045 /CM

PERTHOMETER M4P
DAT.
OBJ. IPB 4c

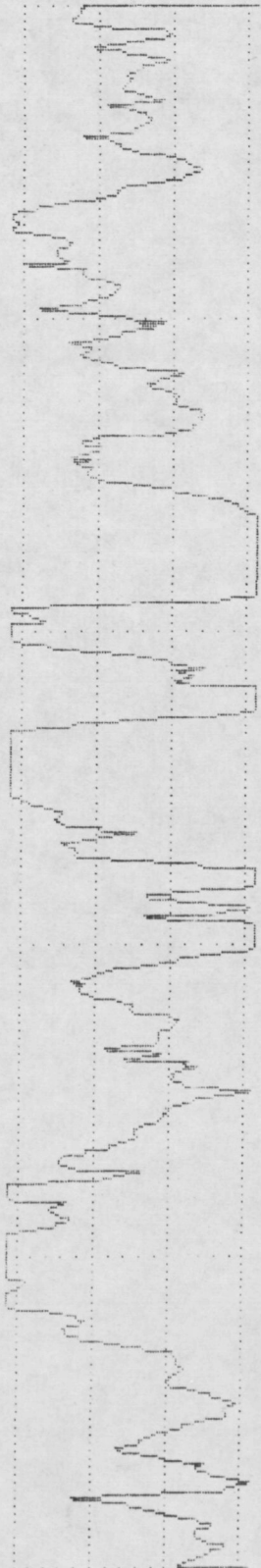
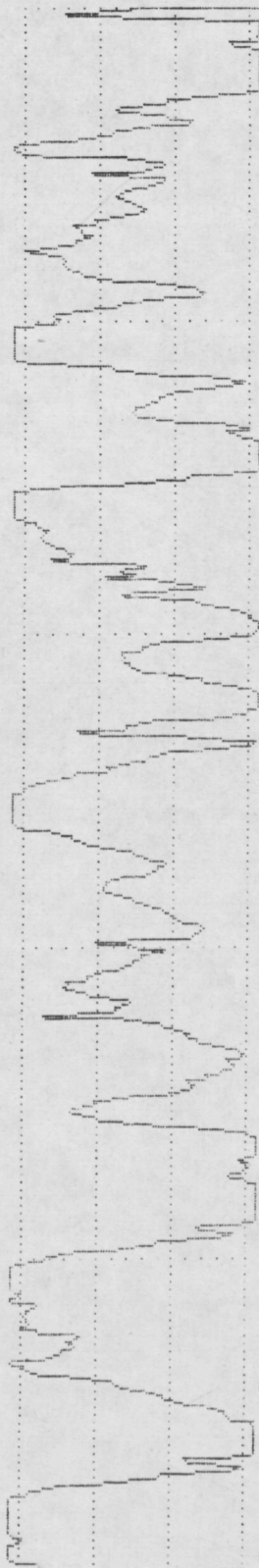
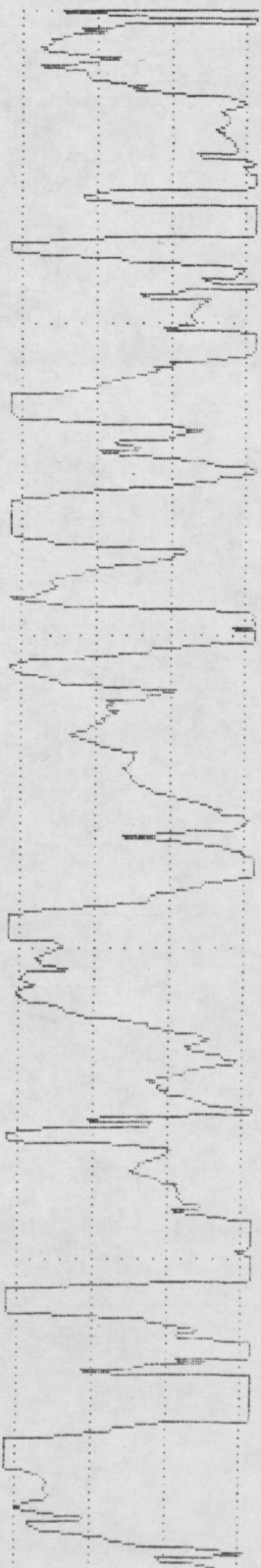
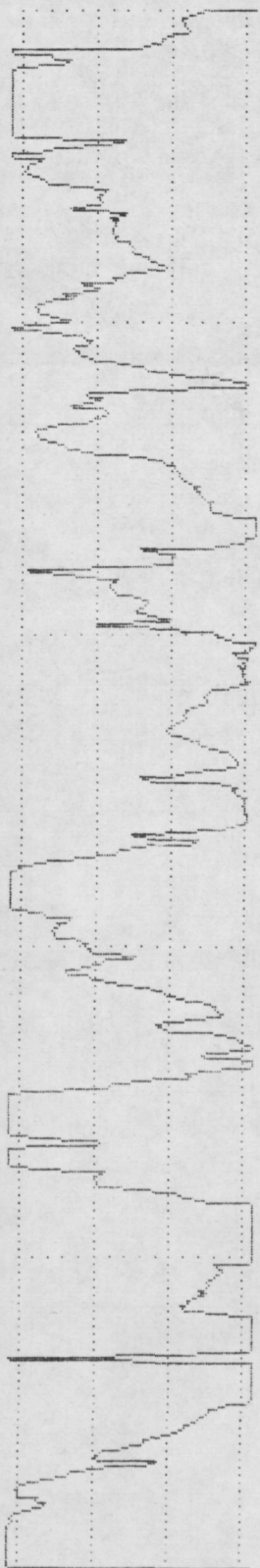
LT 4.8 MM
RA 5.26 UM
RZ 26.68 UM
RMAX 37.76 UM
RPM 15.61 UM
PC<1.3> 037 /CM

VER 5 UM
HOR LC .80 MM

VER 5 UM
HOR LC .80 MM

VER 5 UM
HOR LC .80 MM

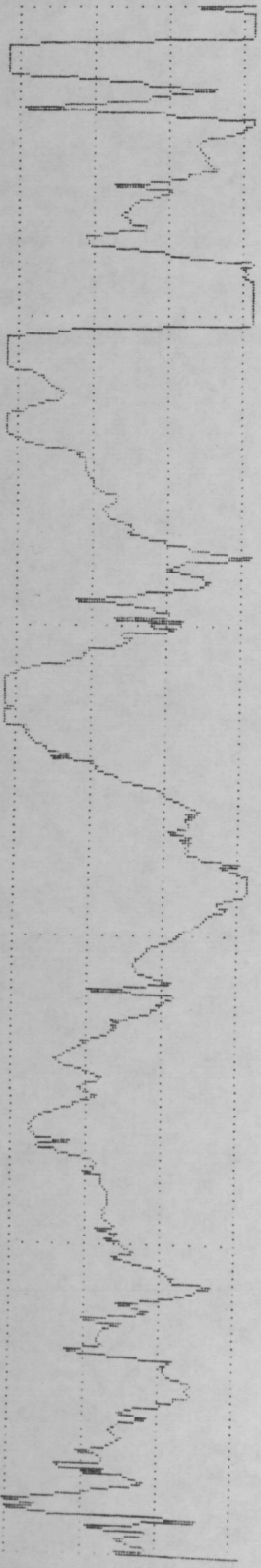
VER 5 UM
HOR LC .80 MM



PERTHOMETER M4P
DAT.
OBJ. IPB 5a

LT 4.8 MM
RA 4.34 UM
RZ 22.59 UM
RMAX 35.84 UM
RPM 12.28 UM
PC<1.3> 040 /CM

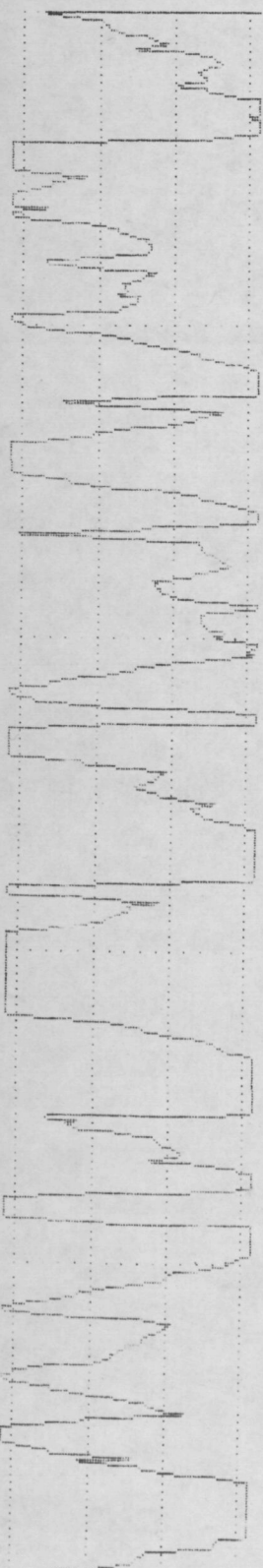
VER 5 UM
HOR LC .80 MM



PERTHOMETER M4P
DAT.
OBJ. IPB 5b

LT 4.8 MM
RA 6.73 UM
RZ 32.76 UM
RMAX 37.12 UM
RPM 16.89 UM
PC<1.3> 040 /CM

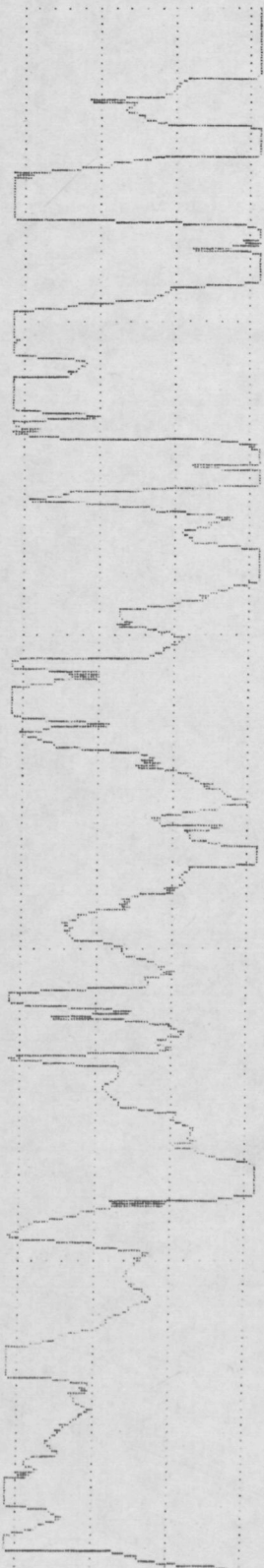
VER 5 UM
HOR LC .80 MM



PERTHOMETER M4P
DAT.
OBJ. IPB 5c

LT 4.8 MM
RA 6.93 UM
RZ 36.67 UM
RMAX 64.32 UM
RPM 18.24 UM
PC<1.3> 030 /CM

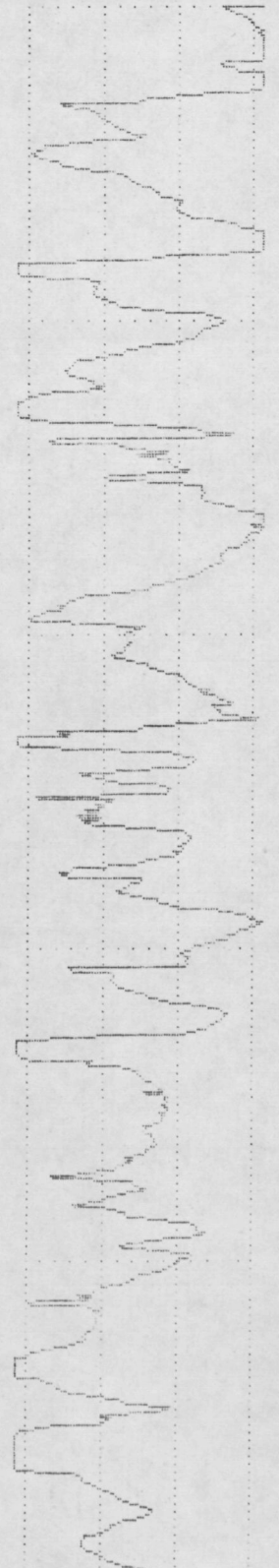
VER 5 UM
HOR LC .80 MM



PERTHOMETER M4P
DAT.
OBJ. IPB 6a

LT 4.8 MM
RA 4.23 UM
RZ 23.61 UM
RMAX 37.12 UM
RPM 14.91 UM
PC<1.3> 042 /CM

VER 5 UM
HOR LC .80 MM



PERTHOMETER M4P
DAT.
OBJ. IPB 6b

LT 4.8 MM
RA 5.75 UM
RZ 33.92 UM
RMAX 57.92 UM
RPM 16.96 UM
PC<1.3> 030 /CM

PERTHOMETER M4P
DAT.
OBJ. IPB 6c

LT 4.8 MM
RA 5.84 UM
RZ 29.37 UM
RMAX 36.80 UM
RPM 17.60 UM
PC<1.3> 030 /CM

PERTHOMETER M4P
DAT.
OBJ. IPB 7a

LT 4.8 MM
RA 5.36 UM
RZ 30.46 UM
RMAX 48.32 UM
RPM 14.84 UM
PC<1.3> 037 /CM

PERTHOMETER M4P
DAT.
OBJ. IPB 7b

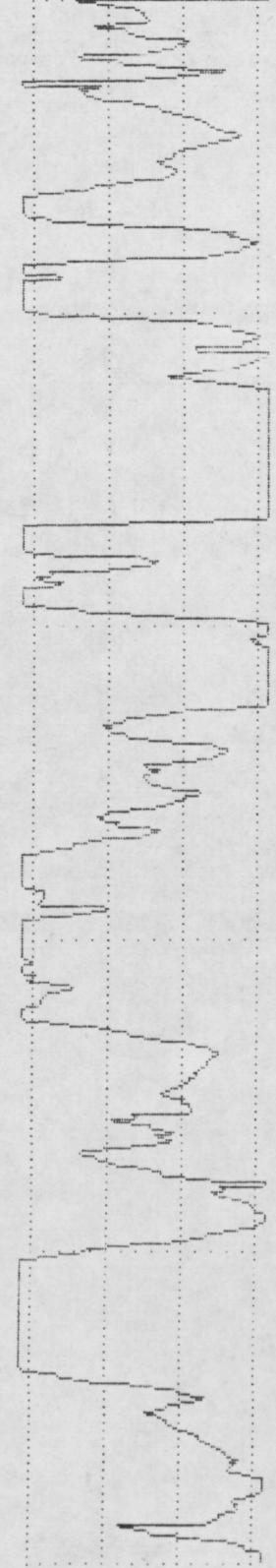
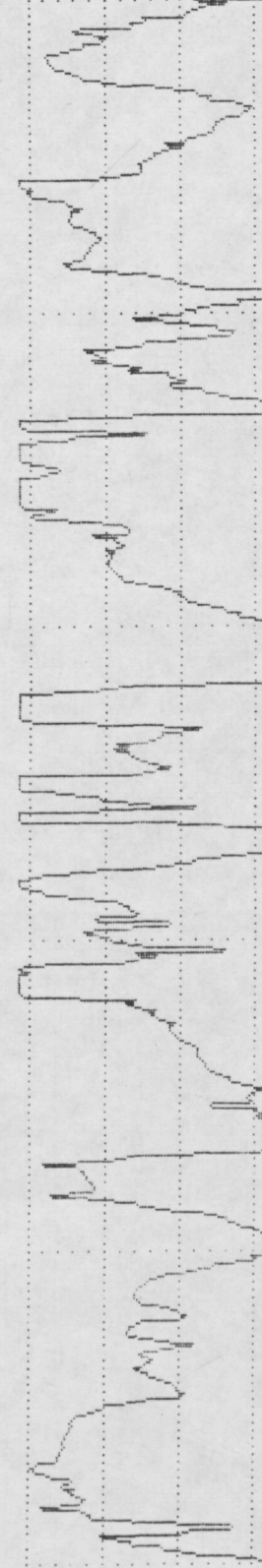
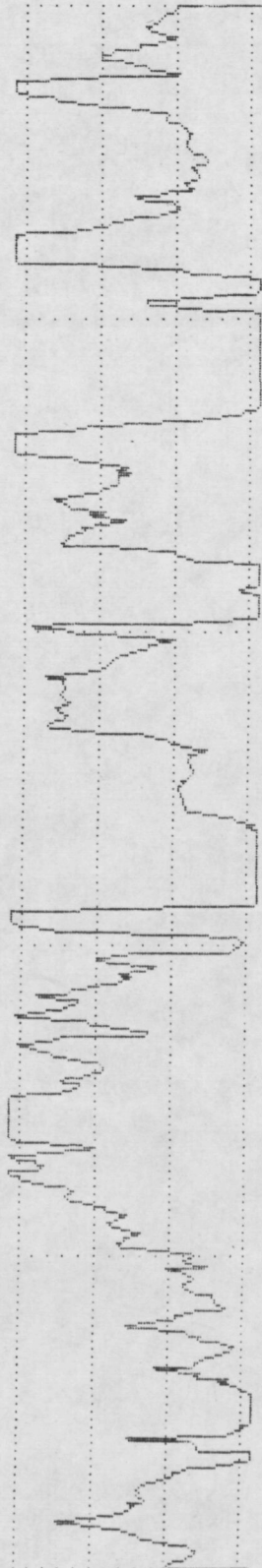
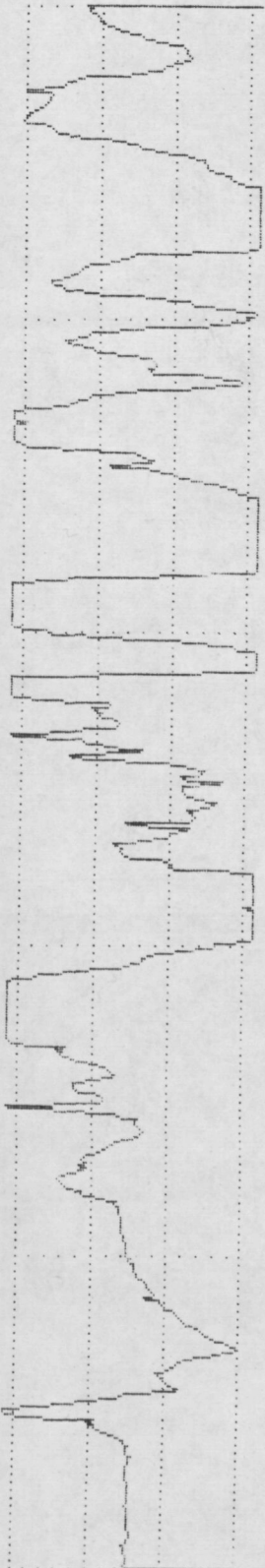
LT 4.8 MM
RA 7.26 UM
RZ 34.36 UM
RMAX 49.60 UM
RPM 20.03 UM
PC<1.3> 032 /CM

VER 5 UM
HOR LC .80 MM

VER 5 UM
HOR LC .80 MM

VER 5 UM
HOR LC .80 MM

VER 5 UM
HOR LC .80 MM



PERTHOMETER M4P
 DAT.
 OBJ. IPB 7c
 #
 LT 4.8 MM
 RA 6.94 UM
 RZ 31.74 UM
 RMAX 49.60 UM
 RPM 14.40 UM
 PC<1.3> 020 /CM

PERTHOMETER M4P
 DAT.
 OBJ. IPB 8a
 #
 LT 4.8 MM
 RA 7.57 UM
 RZ 37.95 UM
 RMAX 54.40 UM
 RPM 21.56 UM
 PC<1.3> 045 /CM

PERTHOMETER M4P
 DAT.
 OBJ. IPB 8b
 #
 LT 4.8 MM
 RA 8.29 UM
 RZ 38.52 UM
 RMAX 48.64 UM
 RPM 20.03 UM
 PC<1.3> 042 /CM

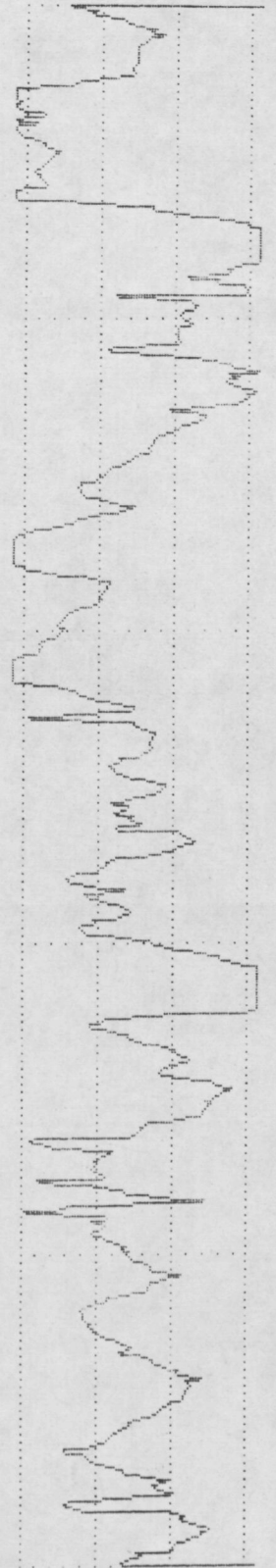
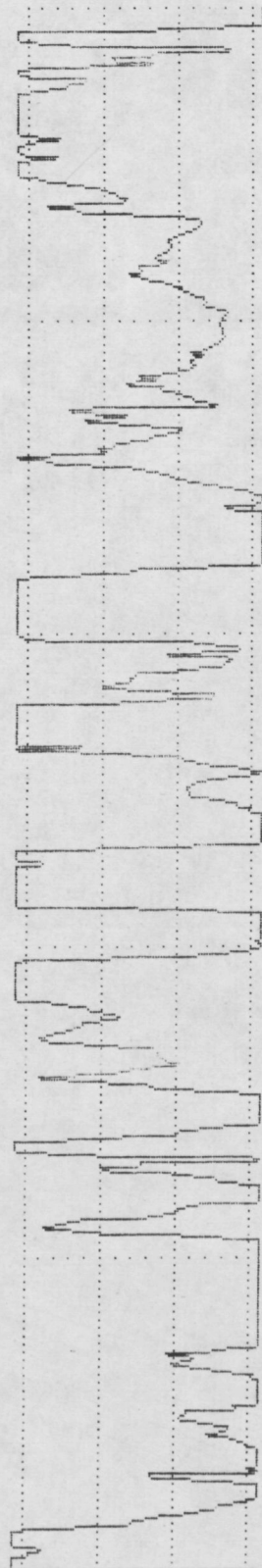
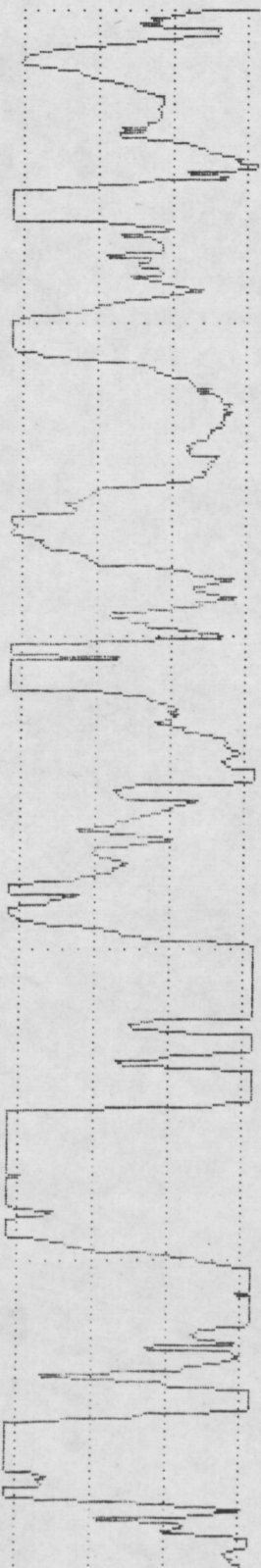
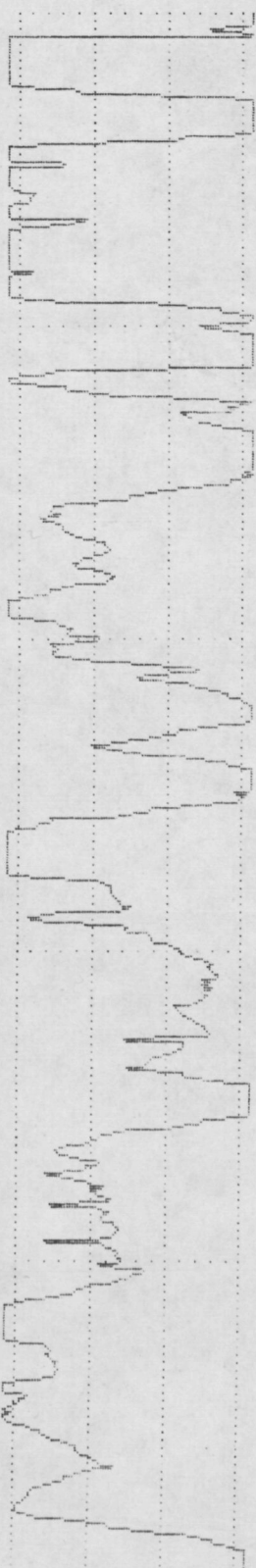
PERTHOMETER M4P
 DAT.
 OBJ. IPB 8c
 #
 LT 4.8 MM
 RA 3.93 UM
 RZ 19.84 UM
 RMAX 26.88 UM
 RPM 9.98 UM
 PC<1.3> 037 /CM

VER 5 UM
 HOR LC .80 MM

VER 5 UM
 HOR LC .80 MM

VER 5 UM
 HOR LC .80 MM

VER 5 UM
 HOR LC .80 MM



PERTHOMETER M4P
 DAT.
 OBJ. IPB 9a
 #
 LT 4.8 MM
 RA 6.05 UM
 RZ 24.70 UM
 RMAX 35.20 UM
 RPM 13.88 UM
 PC<1.3> 035 /CM

PERTHOMETER M4P
 DAT.
 OBJ. IPB 9b
 #
 LT 4.8 MM
 RA 9.24 UM
 RZ 38.01 UM
 RMAX 46.40 UM
 RPM 20.09 UM
 PC<1.3> 035 /CM

PERTHOMETER M4P
 DAT.
 OBJ. IPB 9c
 #
 LT 4.8 MM
 RA 5.97 UM
 RZ 33.21 UM
 RMAX 48.64 UM
 RPM 18.04 UM
 PC<1.3> 037 /CM

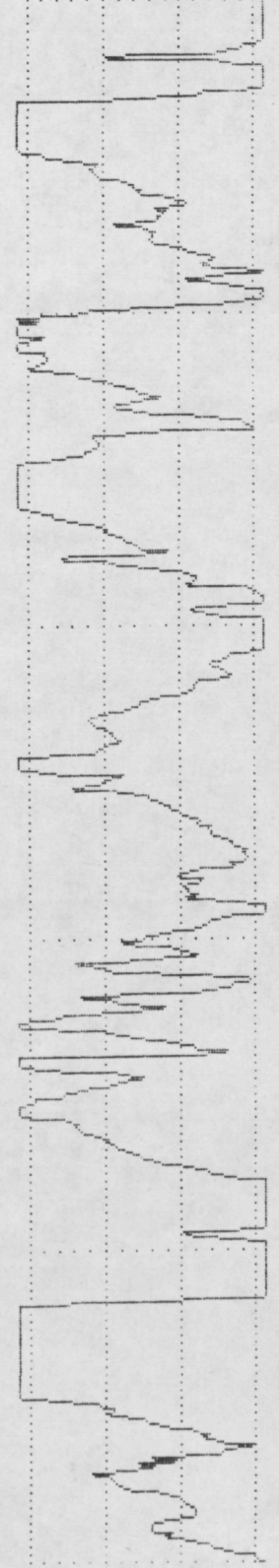
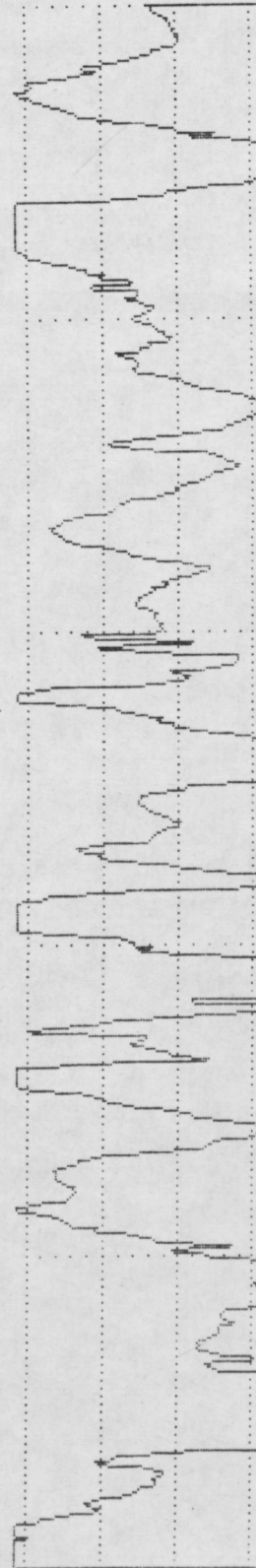
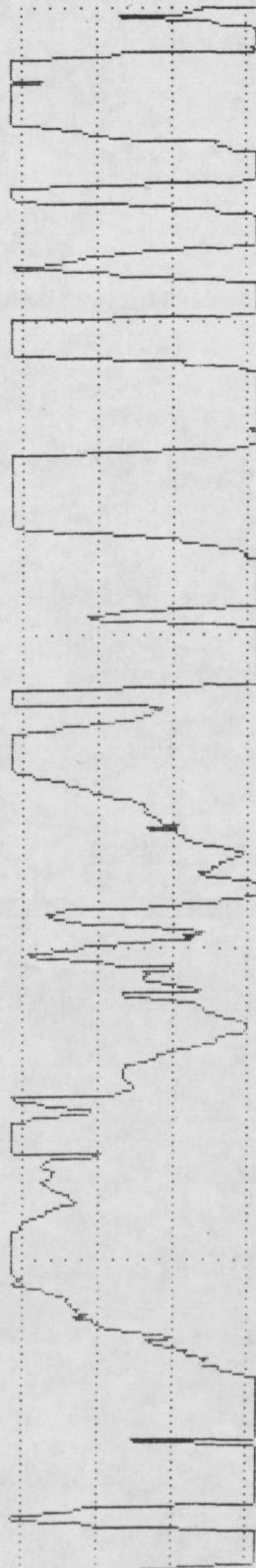
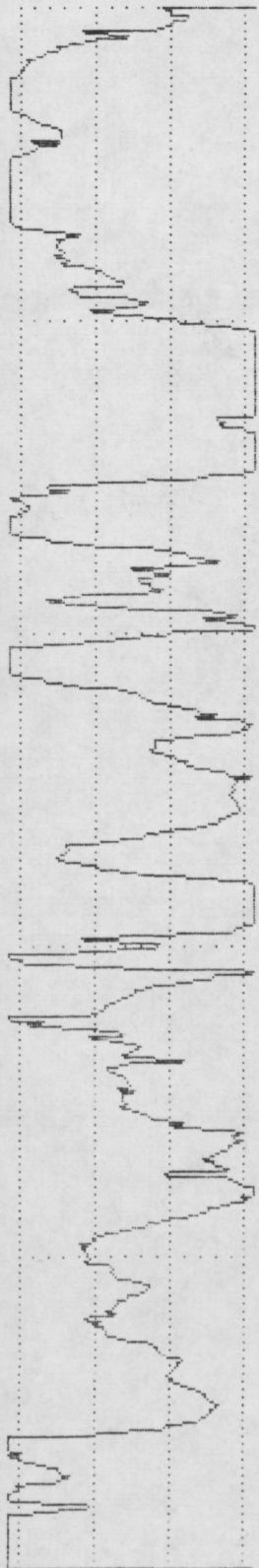
PERTHOMETER M4P
 DAT.
 OBJ. IPB 10a
 #
 LT 4.8 MM
 RA 6.66 UM
 RZ 36.67 UM
 RMAX 51.52 UM
 RPM 18.43 UM
 PC<1.3> 037 /CM

VER 5 UM
 HOR LC .80 MM

VER 5 UM
 HOR LC .80 MM

VER 5 UM
 HOR LC .80 MM

VER 5 UM
 HOR LC .80 MM



PERTHOMETER M4P
DAT.
OBJ. IPB 10b

LT 4.8 MM
RA 6.87 UM
RZ 36.54 UM
RMAX 48.00 UM
RPM 20.41 UM
PC<1.3> 035 /CM

PERTHOMETER M4P
DAT.
OBJ. IPB 10c

LT 4.8 MM
RA 6.06 UM
RZ 38.14 UM
RMAX 49.92 UM
RPM 22.52 UM
PC<1.3> 037 /CM

PERTHOMETER M4P
DAT.
OBJ. IPB 11a

LT 4.8 MM
RA 8.15 UM
RZ 36.28 UM
RMAX 53.44 UM
RPM 16.51 UM
PC<1.3> 027 /CM

PERTHOMETER M4P
DAT.
OBJ. IPB 11b

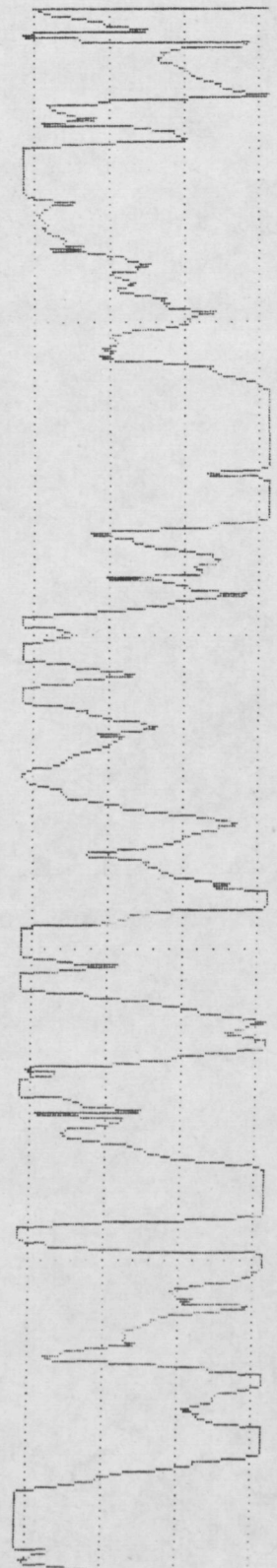
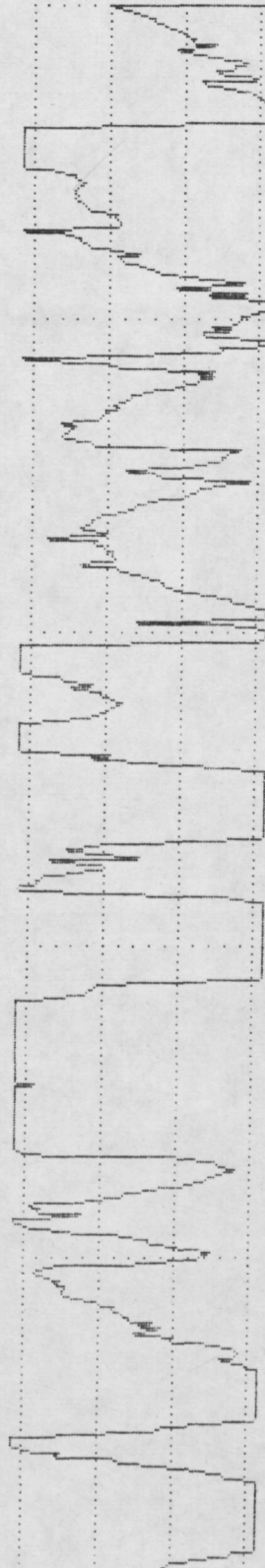
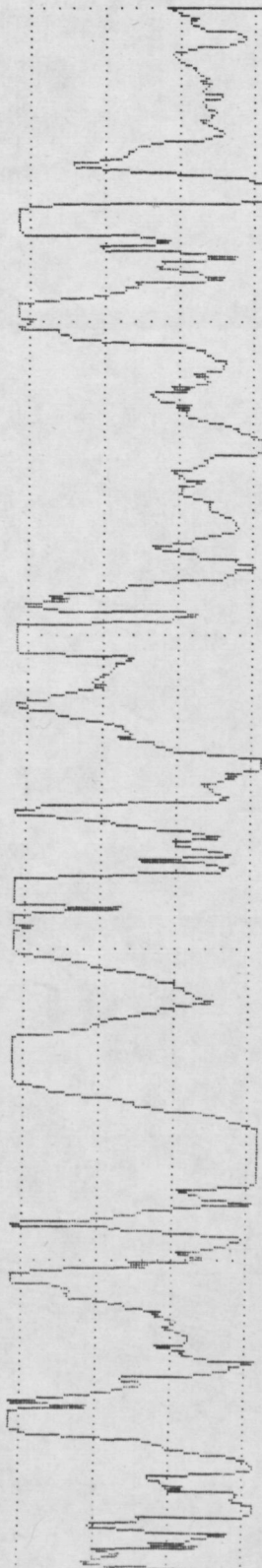
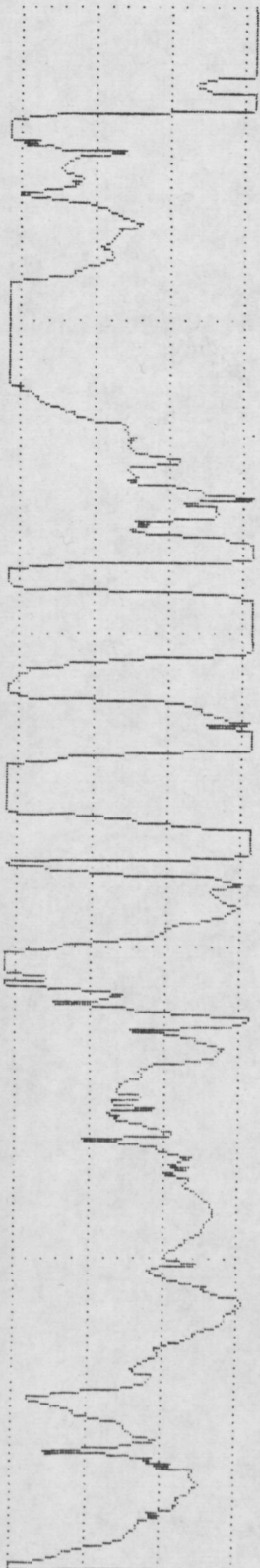
LT 4.8 MM
RA 6.60 UM
RZ 32.70 UM
RMAX 37.76 UM
RPM 18.75 UM
PC<1.3> 032 /CM

VER 5 UM
HOR LC .80 MM

VER 5 UM
HOR LC .80 MM

VER 5 UM
HOR LC .80 MM

VER 5 UM
HOR LC .80 MM



PERTHOMETER M4P
DAT.
OBJ. IPB 11c

LT 4.8 MM
RA 5.23 MM
RZ 29.37 MM
RMAX 38.72 MM
RPM 12.86 MM
PC<1.3> 040 /CM

PERTHOMETER M4P
DAT.
OBJ. IPB 12a

LT 4.8 MM
RA 6.65 MM
RZ 37.76 MM
RMAX 49.28 MM
RPM 20.73 MM
PC<1.3> 040 /CM

PERTHOMETER M4P
DAT.
OBJ. IPB 12b

LT 4.8 MM
RA 6.79 MM
RZ 32.51 MM
RMAX 47.04 MM
RPM 14.72 MM
PC<1.3> 032 /CM

PERTHOMETER M4P
DAT.
OBJ. IPB 12c

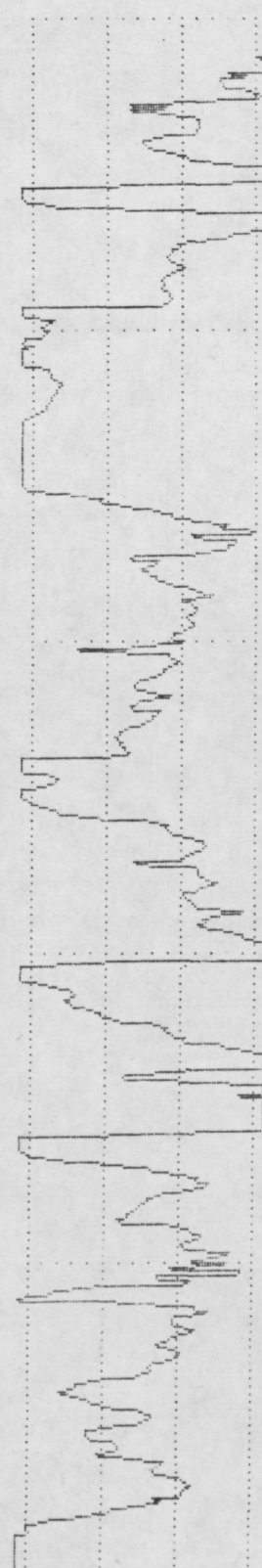
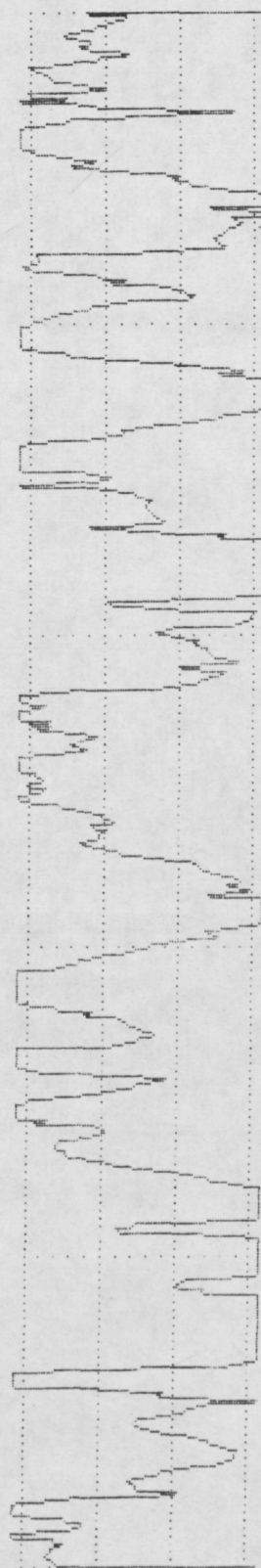
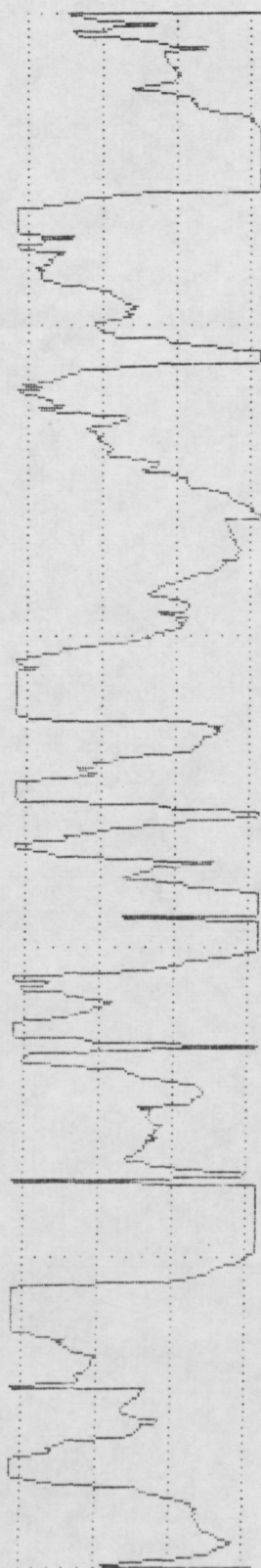
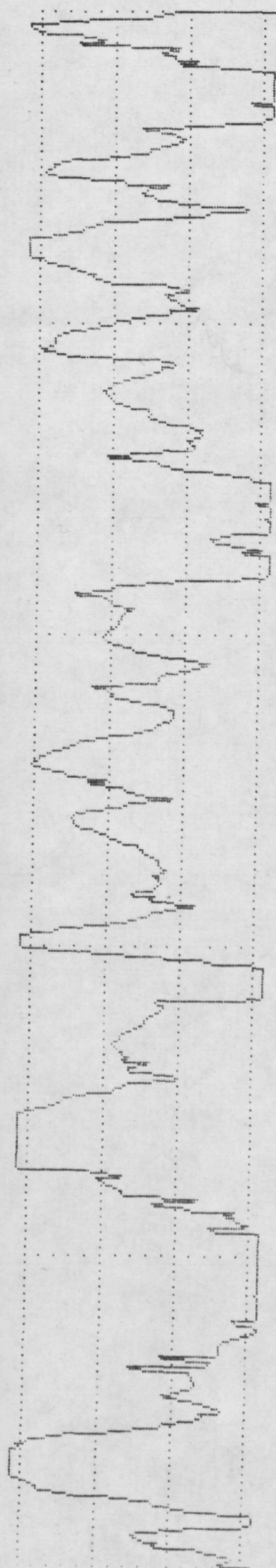
LT 4.8 MM
RA 5.24 MM
RZ 28.41 MM
RMAX 39.36 MM
RPM 16.89 MM
PC<1.3> 040 /CM

VER 5 MM
HOR LC .80 MM

VER 5 MM
HOR LC .80 MM

VER 5 MM
HOR LC .80 MM

VER 5 MM
HOR LC .80 MM



PERTHOMETER M4P
DAT.
OBJ. IPB 13a

LT 4.8 MM
RA 4.20 UM
RZ 20.35 UM
RMAX 28.16 UM
RPM 12.09 UM
PC<1.3> 027 /CM

PERTHOMETER M4P
DAT.
OBJ. IPB 13b

LT 4.8 MM
RA 4.00 UM
RZ 18.94 UM
RMAX 27.84 UM
RPM 9.60 UM
PC<1.3> 035 /CM

PERTHOMETER M4P
DAT.
OBJ. IPB 13c

LT 4.8 MM
RA 5.50 UM
RZ 27.00 UM
RMAX 42.24 UM
RPM 14.14 UM
PC<1.3> 042 /CM

PERTHOMETER M4P
DAT.
OBJ. IPB 14a

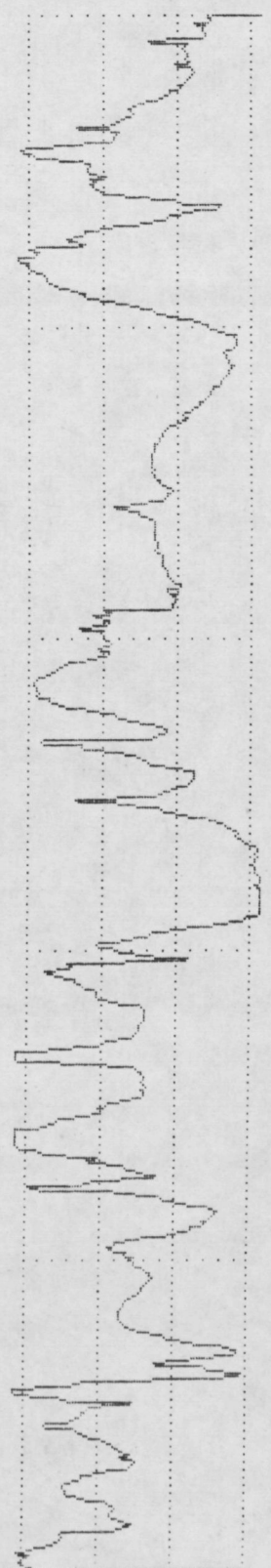
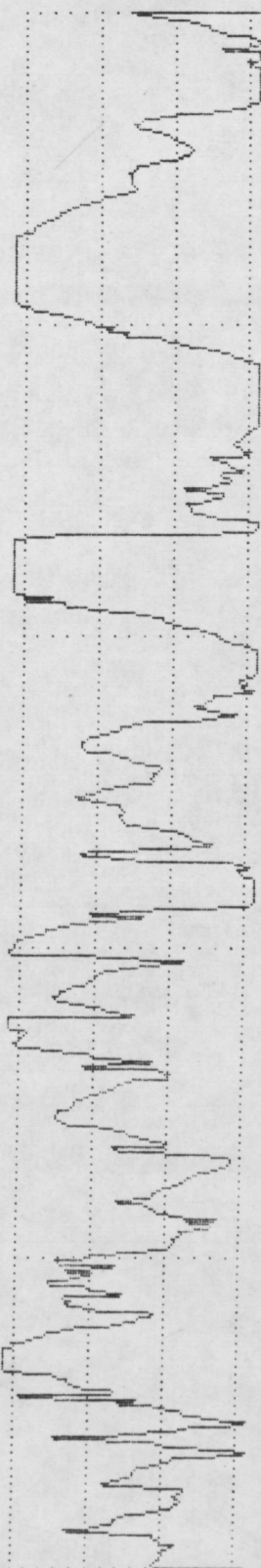
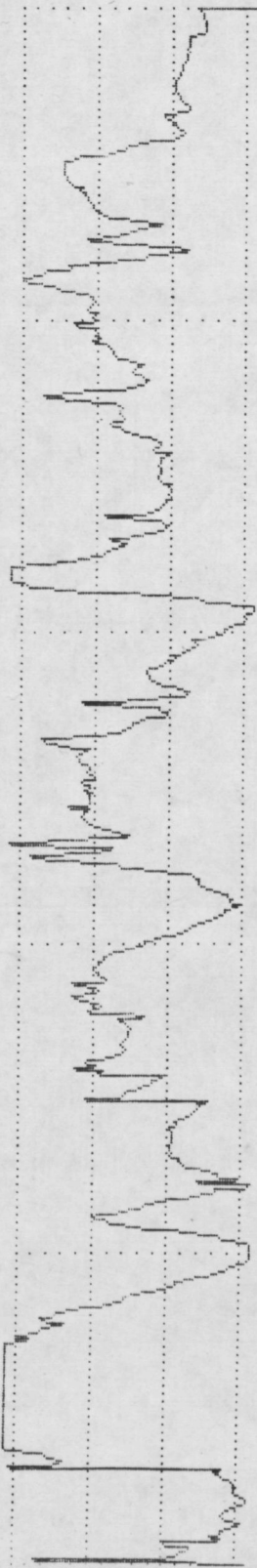
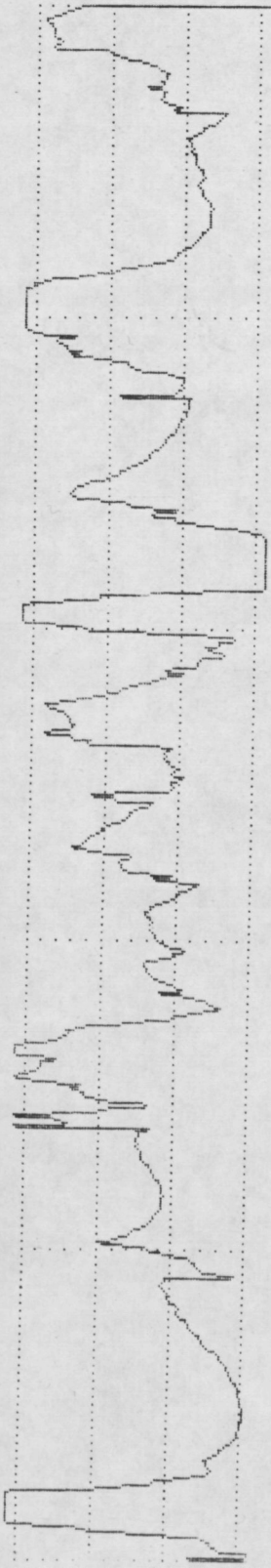
LT 4.8 MM
RA 3.52 UM
RZ 16.25 UM
RMAX 19.84 UM
RPM 9.02 UM
PC<1.3> 030 /CM

VER 5 UM
HOR LC .80 MM

VER 5 UM
HOR LC .80 MM

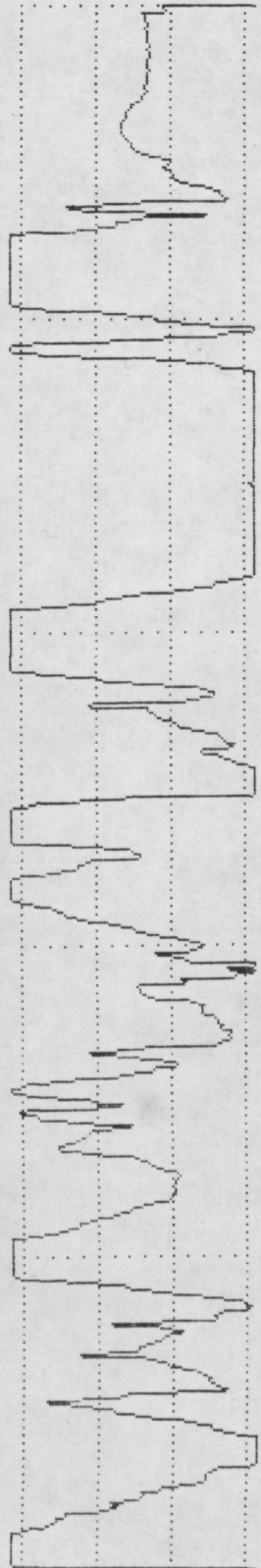
VER 5 UM
HOR LC .80 MM

VER 5 UM
HOR LC .80 MM



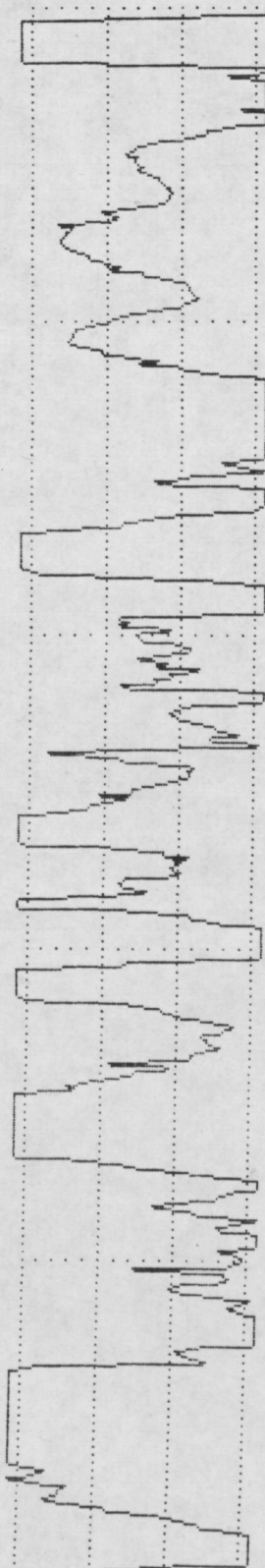
PERTHOMETER M4P
 DAT.
 OBJ. IPB 14b
 #
 LT 4.8 MM
 RA 6.43 UM
 RZ 31.29 UM
 RMAX 49.92 UM
 RPM 18.62 UM
 PC<1.3> 035 /CM

VER 5 UM
 HOR LC .80 MM



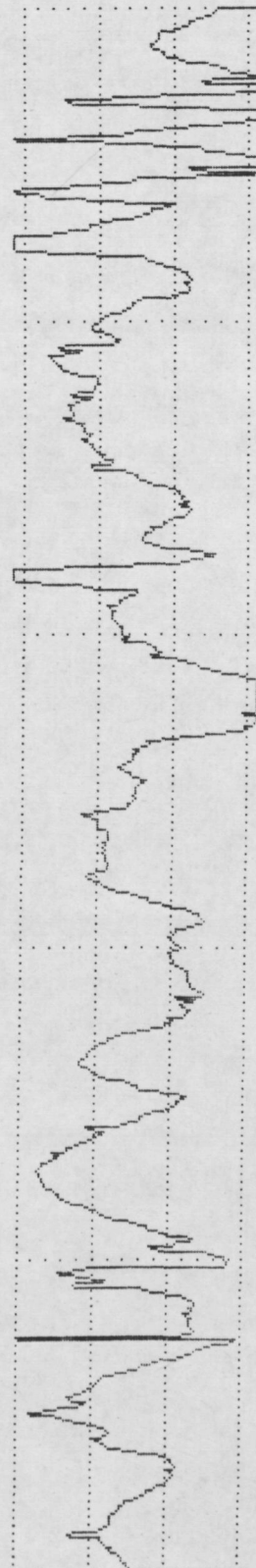
PERTHOMETER M4P
 DAT.
 OBJ. IPB 14c
 #
 LT 4.8 MM
 RA 7.88 UM
 RZ 42.68 UM
 RMAX 62.40 UM
 RPM 23.23 UM
 PC<1.3> 040 /CM

VER 5 UM
 HOR LC .80 MM



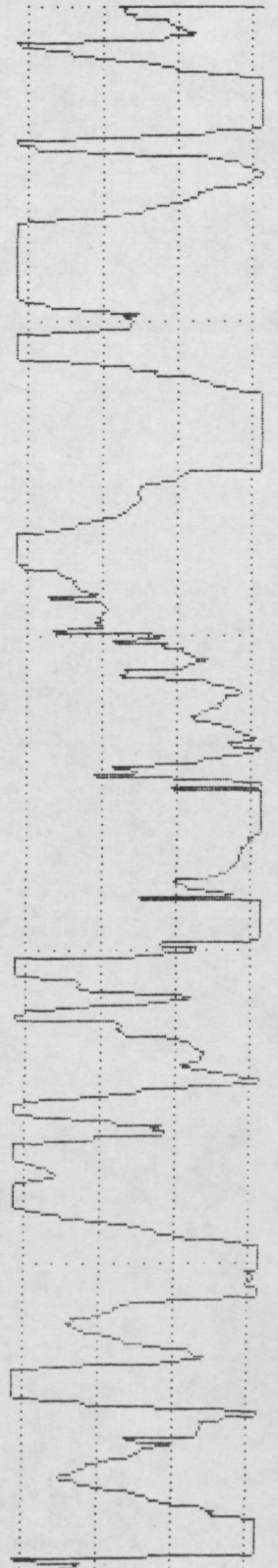
PERTHOMETER M4P
 DAT.
 OBJ. IPB 15a
 #
 LT 4.8 MM
 RA 3.37 UM
 RZ 18.40 UM
 RMAX 29.44 UM
 RPM 9.05 UM
 PC<1.3> 035 /CM

VER 5 UM
 HOR LC .80 MM



PERTHOMETER M4P
 DAT.
 OBJ. IPB 15b
 #
 LT 4.8 MM
 RA 7.89 UM
 RZ 42.04 UM
 RMAX 51.20 UM
 RPM 18.88 UM
 PC<1.3> 037 /CM

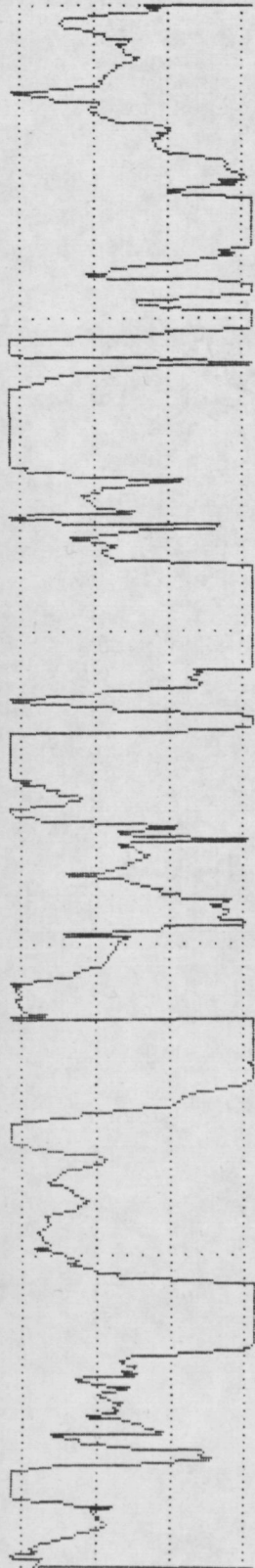
VER 5 UM
 HOR LC .80 MM



PERTHOMETER M4P
DAT.
OBJ. IPB 15c

LT 4.8 MM
RA 6.83 UM
RZ 35.52 UM
RMAX 41.92 UM
RPM 14.78 UM
PC<1.3> 042 /CM

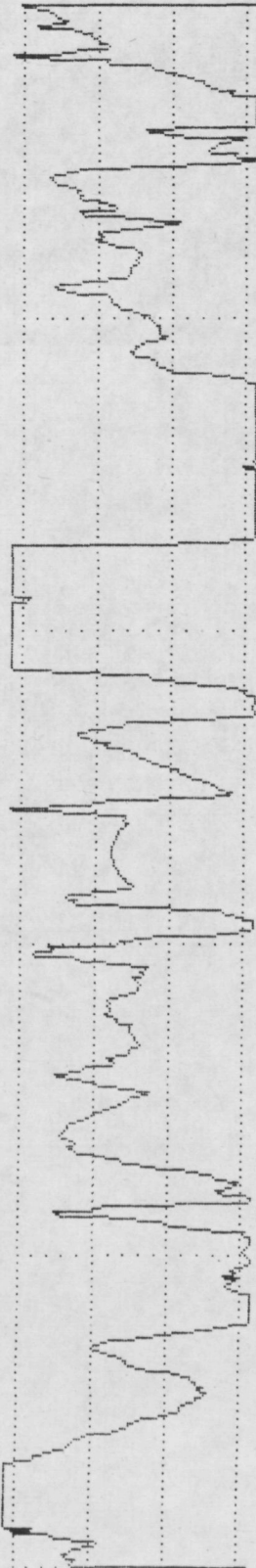
VER 5 UM
HOR LC .80 MM



PERTHOMETER M4P
DAT.
OBJ. IPB 16a

LT 4.8 MM
RA 6.60 UM
RZ 31.04 UM
RMAX 47.04 UM
RPM 16.44 UM
PC<1.3> 032 /CM

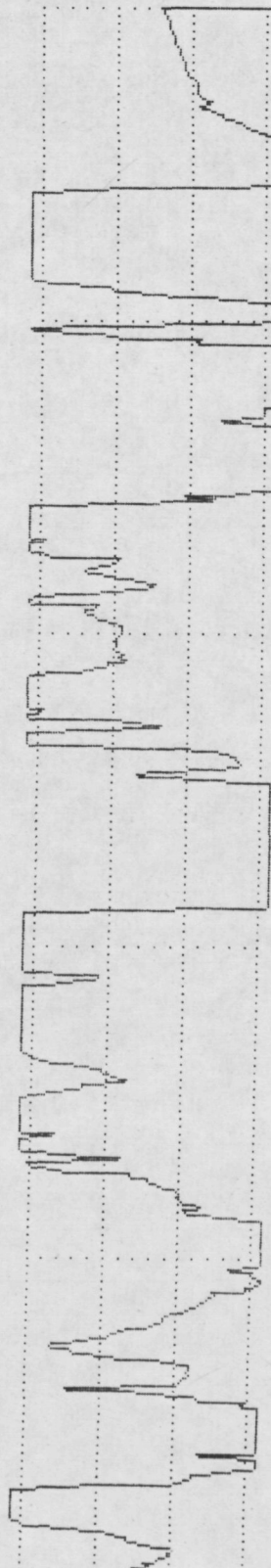
VER 5 UM
HOR LC .80 MM



PERTHOMETER M4P
DAT.
OBJ. IPB 16b

LT 4.8 MM
RA 10.89 UM
RZ 50.36 UM
RMAX 66.88 UM
RPM 26.43 UM
PC<1.3> 022 /CM

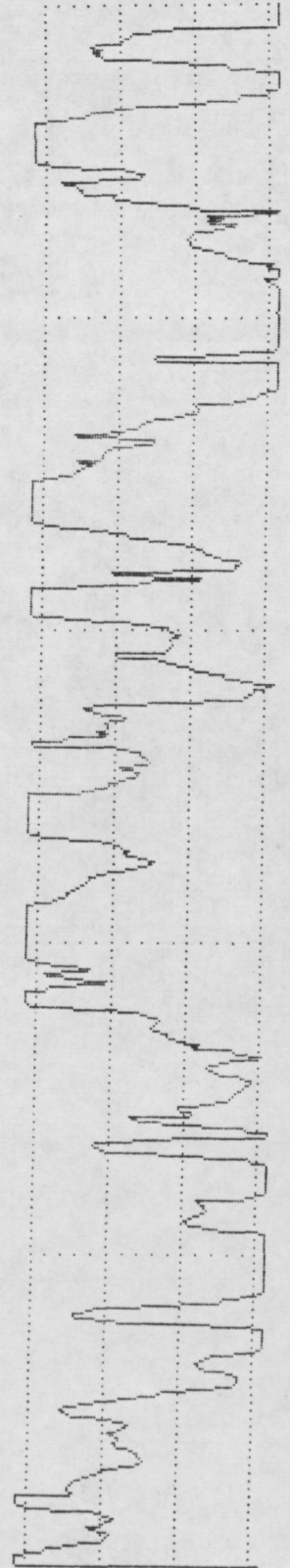
VER 5 UM
HOR LC .80 MM



PERTHOMETER M4P
DAT.
OBJ. IPB 16c

LT 4.8 MM
RA 6.46 UM
RZ 36.92 UM
RMAX 55.68 UM
RPM 19.71 UM
PC<1.3> 030 /CM

VER 5 UM
HOR LC .80 MM



PERTHOMETER M4P
DAT.
OBJ. IPB 17a

LT 4.8 MM
RA 8.02 UM
RZ 35.64 UM
RMAX 47.68 UM
RPM 17.21 UM
PC<1.3> 035 /CM

PERTHOMETER M4P
DAT.
OBJ. IPB 17b

LT 4.8 MM
RA 5.76 UM
RZ 40.19 UM
RMAX 46.08 UM
RPM 22.78 UM
PC<1.3> 035 /CM

PERTHOMETER M4P
DAT.
OBJ. IPB 17c

LT 4.8 MM
RA 6.43 UM
RZ 30.94 UM
RMAX 34.72 UM
RPM 16.99 UM
PC<1.3> 035 /CM

PERTHOMETER M4P
DAT.
OBJ. IPB 18a

LT 4.8 MM
RA 7.89 UM
RZ 43.52 UM
RMAX 51.52 UM
RPM 22.46 UM
PC<1.3> 045 /CM

VER 5 UM
HOR LC .80 MM

VER 5 UM
HOR LC .80 MM

VER 5 UM
HOR LC .80 MM

VER 5 UM
HOR LC .80 MM

