

UNIVERSITAT DE BARCELONA

DEPARTAMENT DE CIENCIAS

MORFOLÓGIQUES I

ODONTO-ESTOMATOLOGIA

TESIS DOCTORAL

**"ESTUDIO RUGOSIMÉTRICO DE LA
SUPERFICIE DE LA CERÁMICA
FELDESPÁTICA UTILIZADA EN LA
ELABORACIÓN DE RESTAURACIONES
CERAMO-METÁLICAS"**

PRESENTADA POR EL LICENCIADO EN

MEDICINA Y CIRUGÍA:

JOSÉ MARÍA ANGLADA CANTARELL

DIRECTORES:

PROF. F. J. GASCÓN MAYORDOMO (E.P.D.)

PROF. J. SALSENCH CABRÉ

BARCELONA JUNIO 1992



J. Anglada

PERTHOMETER M4P
 DAT.
 OBJ. VIA 5a
 #
 LT 4.8 MM
 RA 2.06 UM
 RZ 9.36 UM
 RMAX 12.00 UM
 RPM 4.89 UM
 PC<1.3> 015 /CM

PERTHOMETER M4P
 DAT.
 OBJ. VIA 5b
 #
 LT 4.8 MM
 RA 1.81 UM
 RZ 8.32 UM
 RMAX 8.88 UM
 RPM 4.56 UM
 PC<1.3> 022 /CM

PERTHOMETER M4P
 DAT.
 OBJ. VIA 5c
 #
 LT 4.8 MM
 RA 1.55 UM
 RZ 6.78 UM
 RMAX 15.36 UM
 RPM 3.13 UM
 PC<1.3> 010 /CM

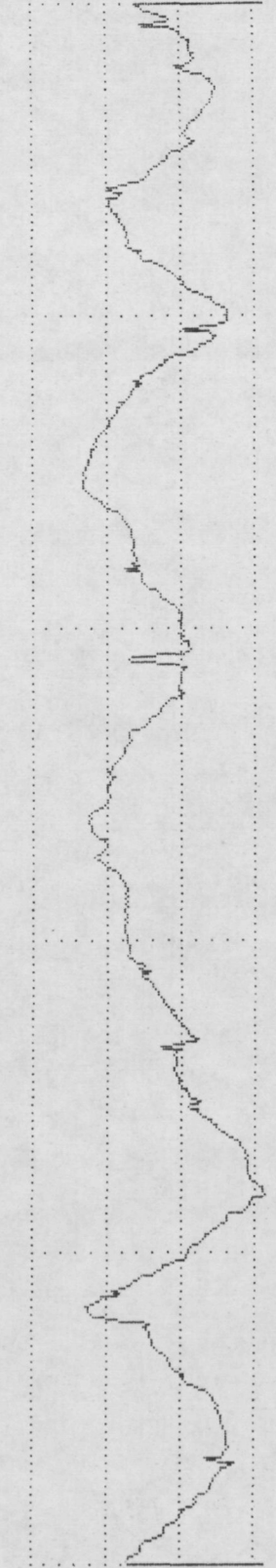
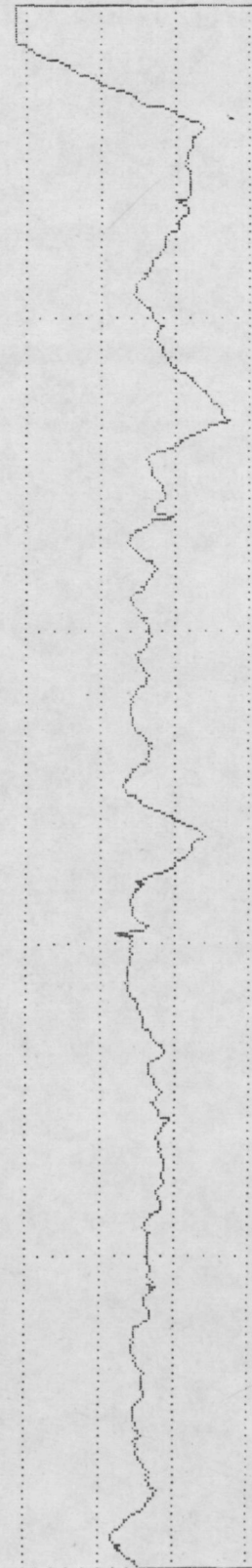
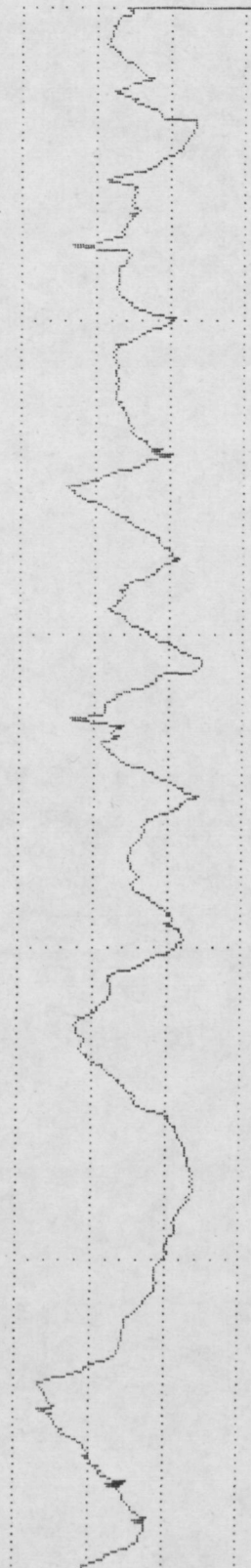
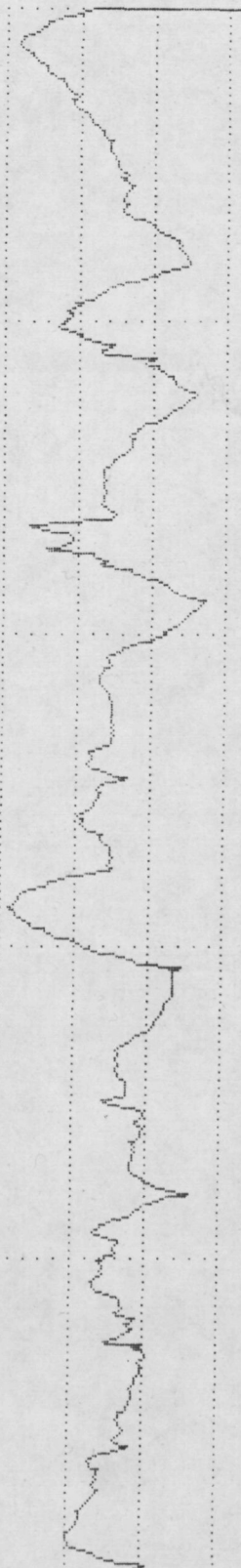
PERTHOMETER M4P
 DAT.
 OBJ. VIA 6a
 #
 LT 4.8 MM
 RA 2.64 UM
 RZ 8.89 UM
 RMAX 10.16 UM
 RPM 3.18 UM
 PC<1.3> 015 /CM

VER 5 UM
 HOR LC .80 MM

VER 5 UM
 HOR LC .80 MM

VER 5 UM
 HOR LC .80 MM

VER 5 UM
 HOR LC .80 MM



PERTHOMETER M4P
 DAT.
 OBJ. VIA 6b
 #
 LT 4.8 MM
 RA 2.08 UM
 RZ 6.70 UM
 RMAX 8.88 UM
 RPM 3.64 UM
 PC<1.3> 007 /CM

PERTHOMETER M4P
 DAT.
 OBJ. VIA 6c
 #
 LT 4.8 MM
 RA 2.51 UM
 RZ 9.74 UM
 RMAX 16.08 UM
 RPM 4.65 UM
 PC<1.3> 007 /CM

PERTHOMETER M4P
 DAT.
 OBJ. VIA 7a
 #
 LT 4.8 MM
 RA 3.44 UM
 RZ 11.39 UM
 RMAX 13.12 UM
 RPM 5.34 UM
 PC<1.3> 012 /CM

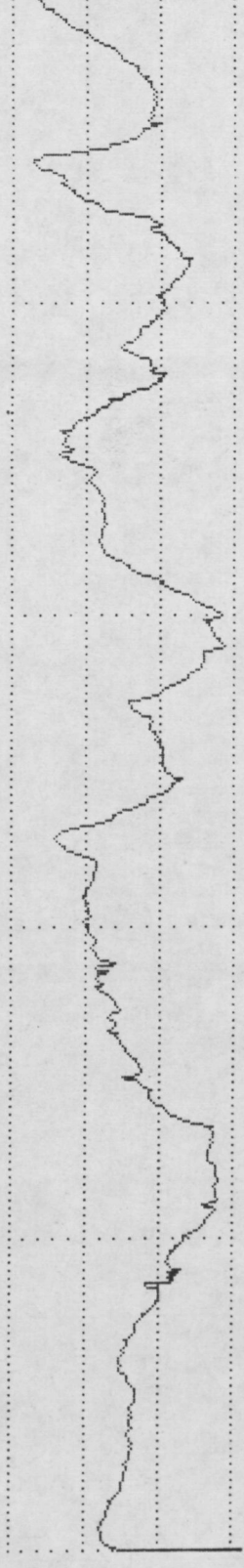
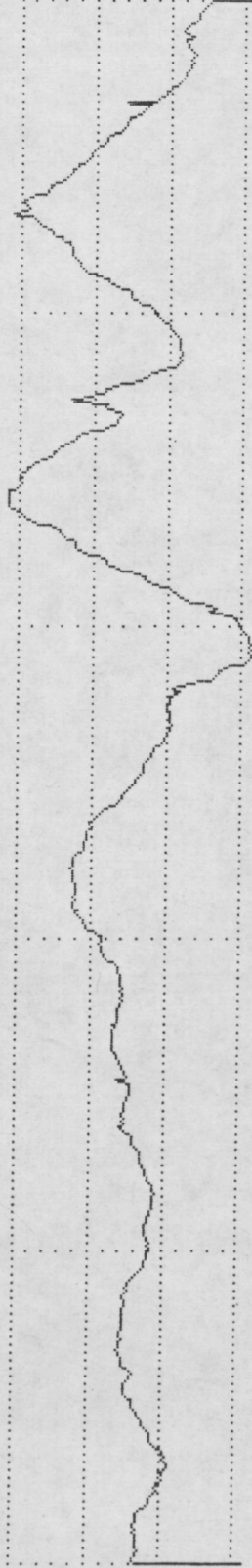
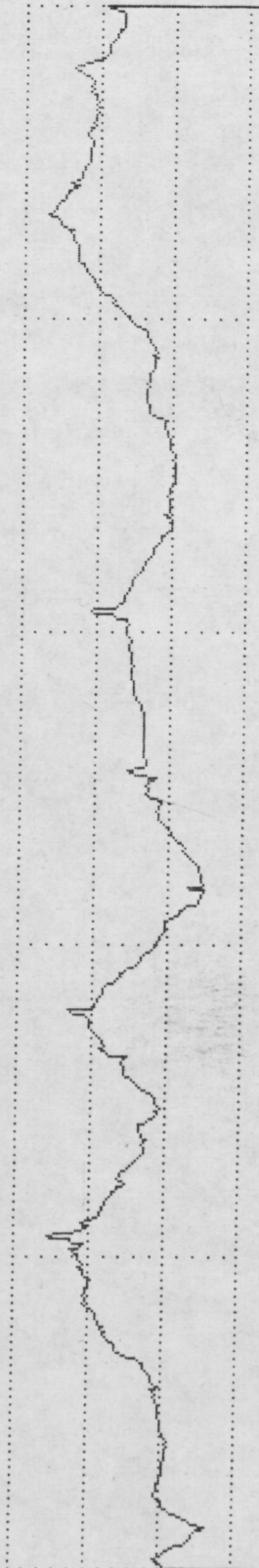
PERTHOMETER M4P
 DAT.
 OBJ. VIA 7b
 #
 LT 4.8 MM
 RA 2.44 UM
 RZ 9.52 UM
 RMAX 11.36 UM
 RPM 3.90 UM
 PC<1.3> 010 /CM

VER 5 UM
 HOR LC .80 MM

VER 5 UM
 HOR LC .80 MM

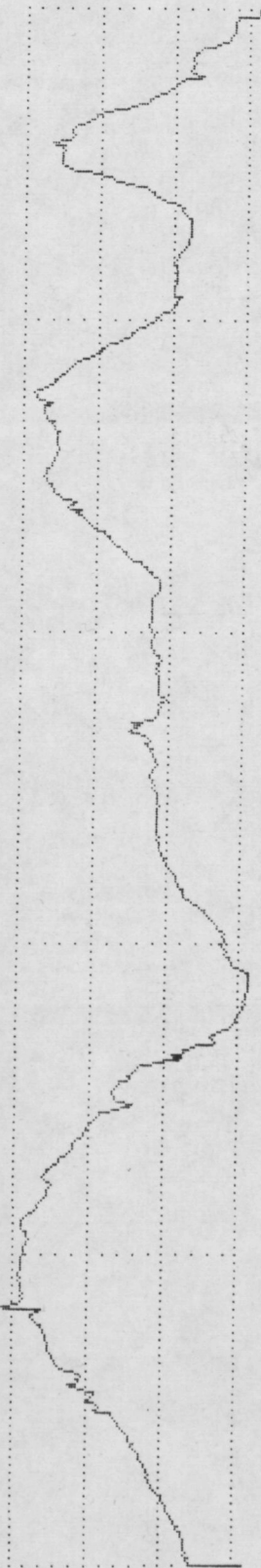
VER 5 UM
 HOR LC .80 MM

VER 5 UM
 HOR LC .80 MM



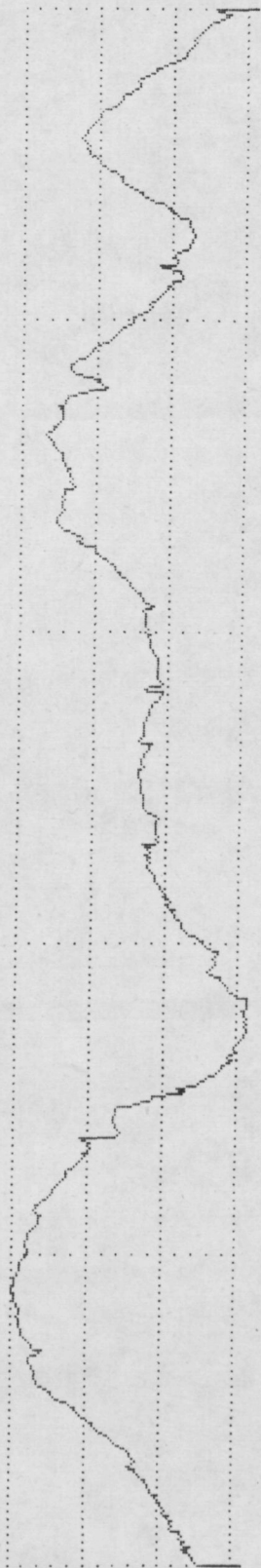
PERTHOMETER M4P
 DAT.
 OBJ. VIA 7c
 #
 LT 4.8 MM
 RA 3.60 UM
 RZ 11.93 UM
 RMAX 16.08 UM
 RPM 5.74 UM
 PC<1.3> 007 /CM

VER 5 UM
 HOR LC .80 MM



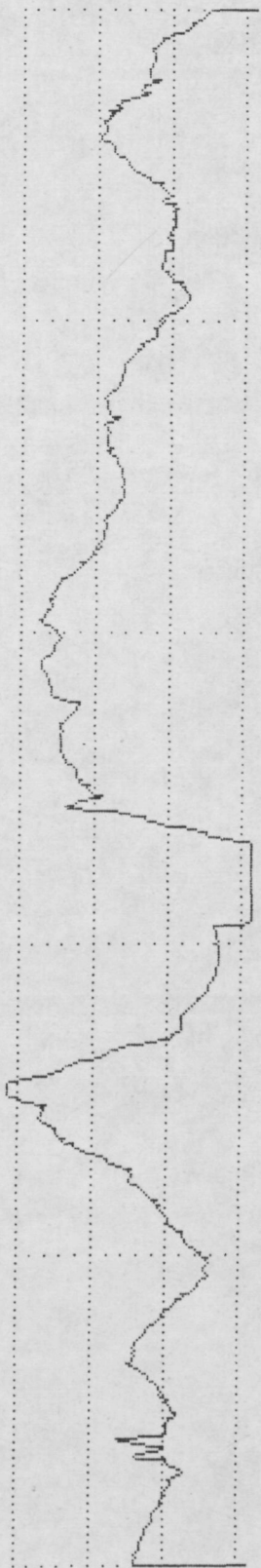
PERTHOMETER M4P
 DAT.
 OBJ. VIA 8a
 #
 LT 4.8 MM
 RA 3.41 UM
 RZ 10.12 UM
 RMAX 15.44 UM
 RPM 4.89 UM
 PC<1.3> 007 /CM

VER 5 UM
 HOR LC .80 MM



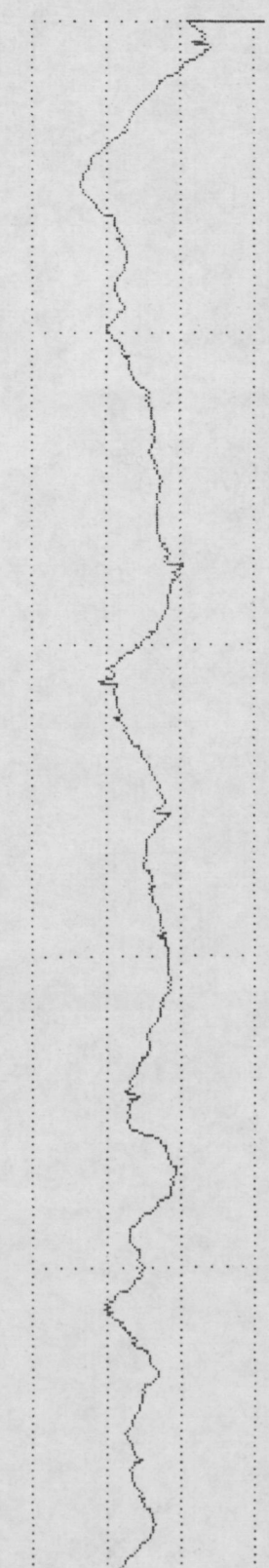
PERTHOMETER M4P
 DAT.
 OBJ. VIA 8b
 #
 LT 4.8 MM
 RA 3.43 UM
 RZ 11.74 UM
 RMAX 20.32 UM
 RPM 5.21 UM
 PC<1.3> 010 /CM

VER 5 UM
 HOR LC .80 MM



PERTHOMETER M4P
 DAT.
 OBJ. VIA 8c
 #
 LT 4.8 MM
 RA 1.22 UM
 RZ 5.08 UM
 RMAX 8.80 UM
 RPM 2.75 UM
 PC<1.3> 012 /CM

VER 5 UM
 HOR LC .80 MM



PERTHOMETER M4P
 DAT.
 OBJ. VIA 9a
 #
 LT 4.8 MM
 RA 2.62 UM
 RZ 7.69 UM
 RMAX 10.08 UM
 RPM 4.04 UM
 PC<1.3> 007 /CM

PERTHOMETER M4P
 DAT.
 OBJ. VIA 9b
 #
 LT 4.8 MM
 RA 2.41 UM
 RZ 9.23 UM
 RMAX 13.92 UM
 RPM 5.13 UM
 PC<1.3> 017 /CM

PERTHOMETER M4P
 DAT.
 OBJ. VIA 9c
 #
 LT 4.8 MM
 RA 2.48 UM
 RZ 6.36 UM
 RMAX 12.80 UM
 RPM 2.68 UM
 PC<1.3> 015 /CM

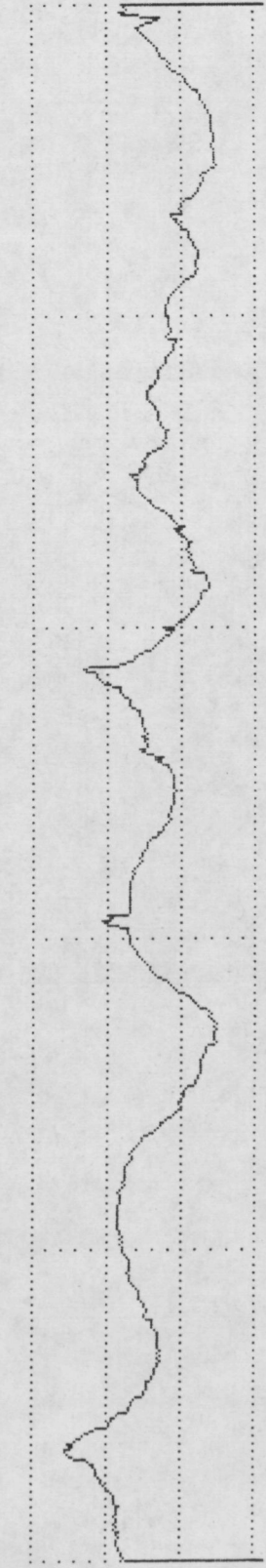
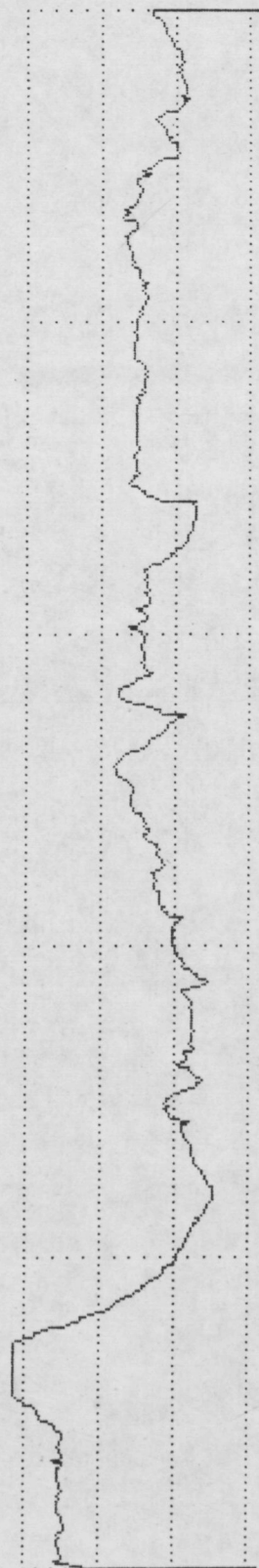
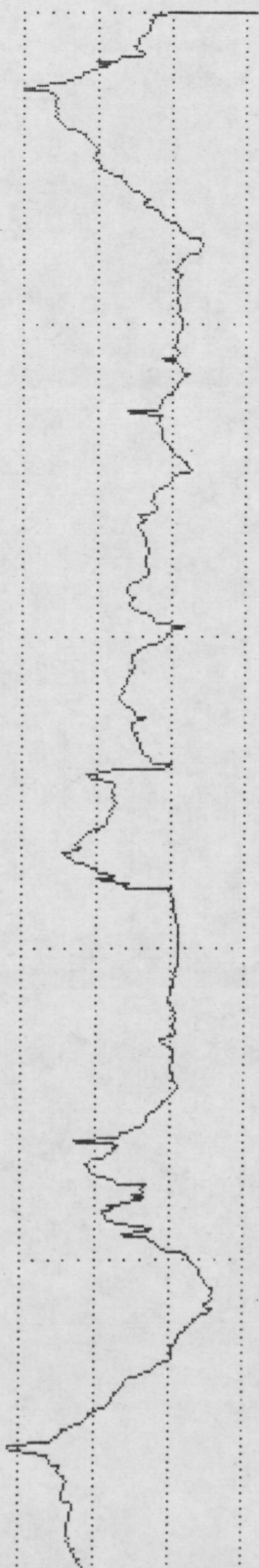
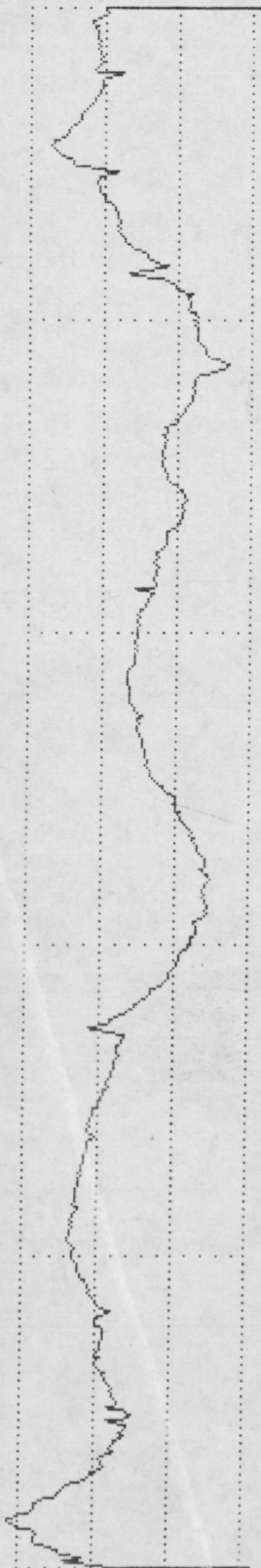
PERTHOMETER M4P
 DAT.
 OBJ. VIA 10a
 #
 LT 4.8 MM
 RA 1.92 UM
 RZ 6.32 UM
 RMAX 6.80 UM
 RPM 2.89 UM
 PC<1.3> 012 /CM

VER 5 UM
 HOR LC .80 MM

VER 5 UM
 HOR LC .80 MM

VER 5 UM
 HOR LC .80 MM

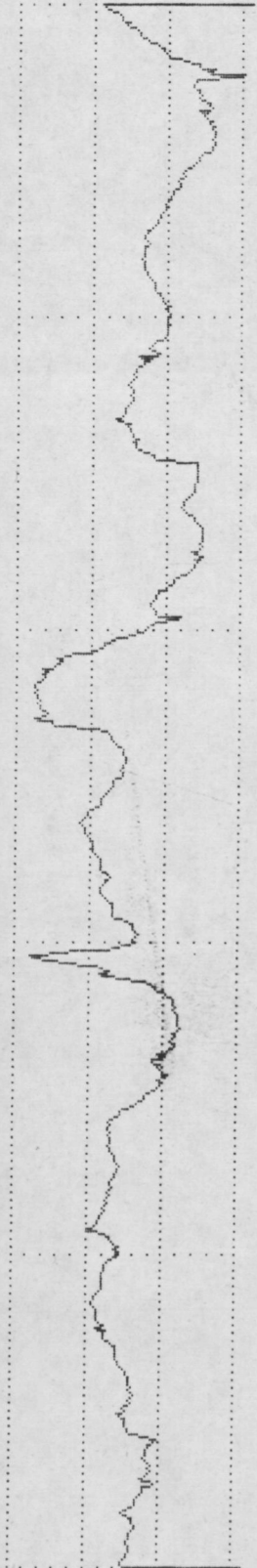
VER 5 UM
 HOR LC .80 MM



PERTHOMETER M4P
DAT.
OBJ. VIA 10b

LT 4.8 MM
RA 2.07 UM
RZ 7.53 UM
RMAX 10.24 UM
RPM 3.68 UM
PC<1.3> 010 /CM

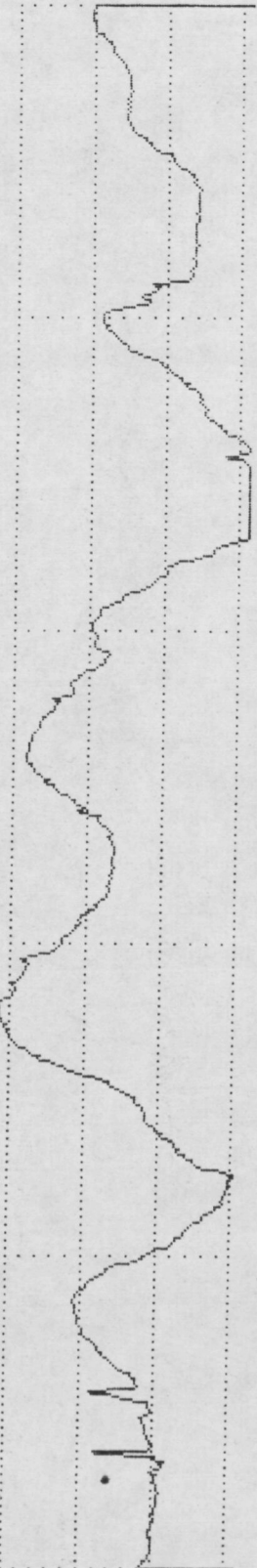
VER 5 UM
HOR LC .80 MM



PERTHOMETER M4P
DAT.
OBJ. VIA 10c

LT 4.8 MM
RA 3.56 UM
RZ 10.08 UM
RMAX 16.32 UM
RPM 4.73 UM
PC<1.3> 012 /CM

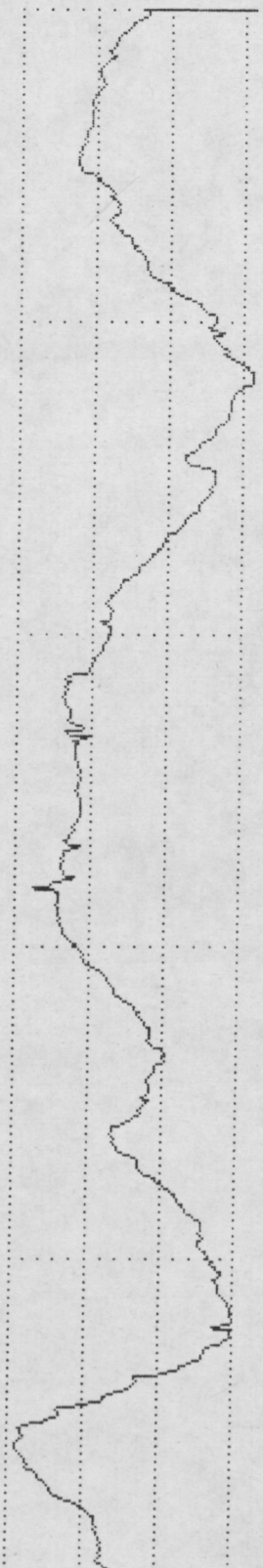
VER 5 UM
HOR LC .80 MM



PERTHOMETER M4P
DAT.
OBJ. VIA 11a

LT 4.8 MM
RA 3.38 UM
RZ 10.40 UM
RMAX 14.56 UM
RPM 4.57 UM
PC<1.3> 010 /CM

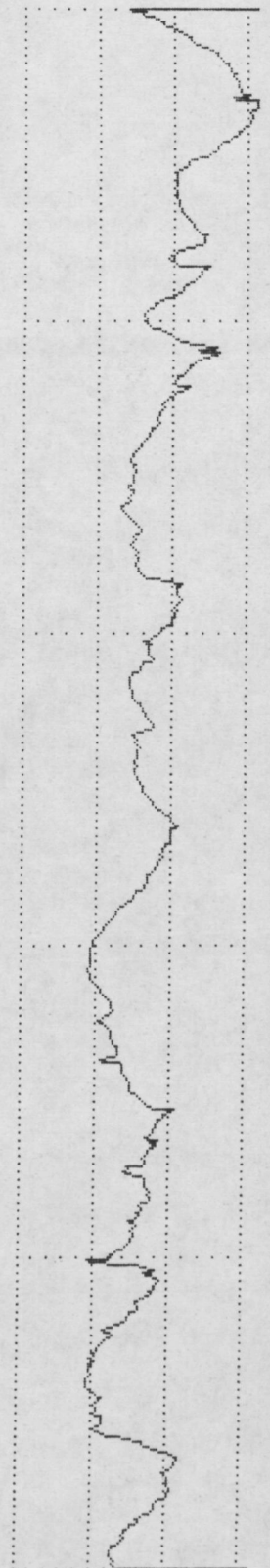
VER 5 UM
HOR LC .80 MM



PERTHOMETER M4P
DAT.
OBJ. VIA 11b

LT 4.8 MM
RA 1.92 UM
RZ 6.60 UM
RMAX 8.88 UM
RPM 2.04 UM
PC<1.3> 012 /CM

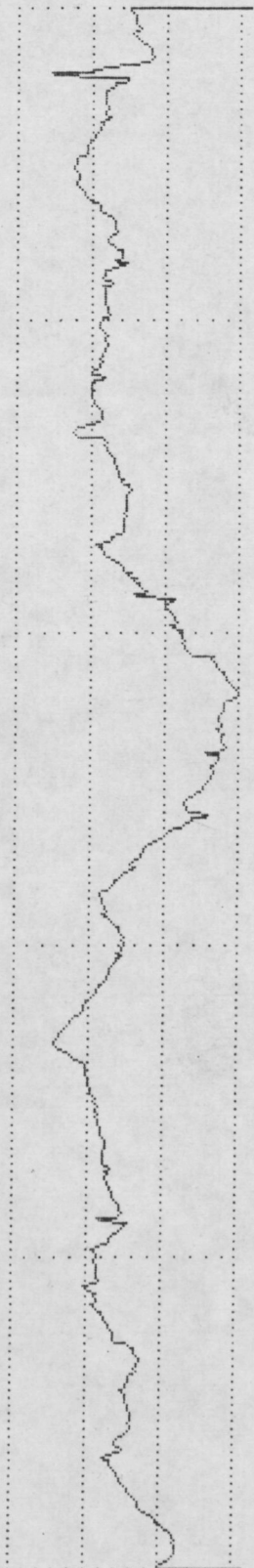
VER 5 UM
HOR LC .80 MM



PERTHOMETER M4P
DAT.
OBJ. Via 11c

LT 4.8 MM
RA 2.08 UM
RZ 7.00 UM
RMAX 9.44 UM
RPM 3.72 UM
PC<1.3> 007 /CM

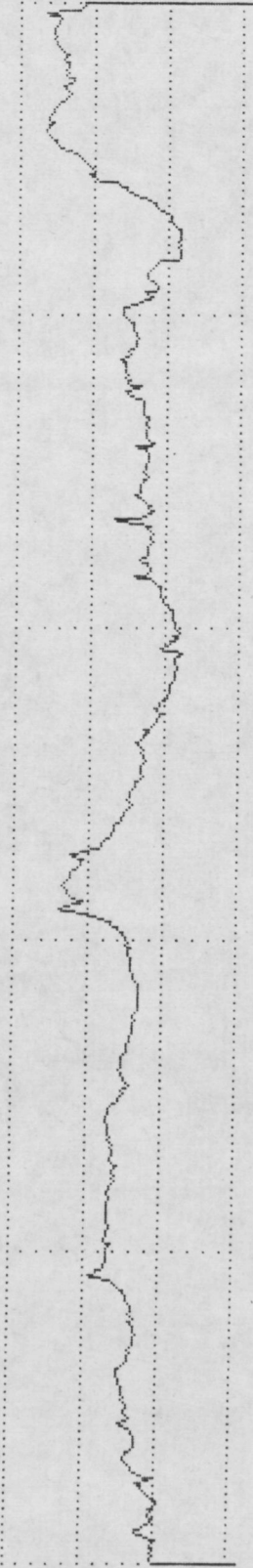
VER 5 UM
HOR LC .80 MM



PERTHOMETER M4P
DAT.
OBJ. Via 12a

LT 4.8 MM
RA 1.60 UM
RZ 5.68 UM
RMAX 9.20 UM
RPM 2.99 UM
PC<1.3> 010 /CM

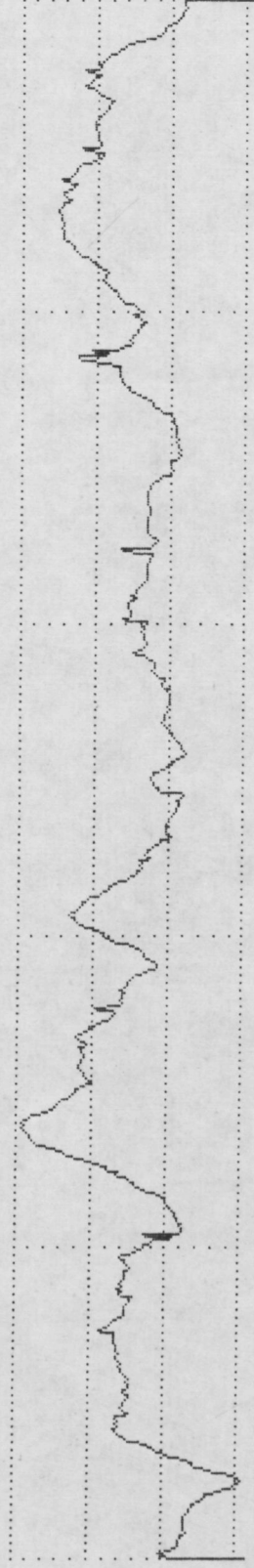
VER 5 UM
HOR LC .80 MM



PERTHOMETER M4P
DAT.
OBJ. Via 12b

LT 4.8 MM
RA 2.17 UM
RZ 8.81 UM
RMAX 10.96 UM
RPM 4.51 UM
PC<1.3> 017 /CM

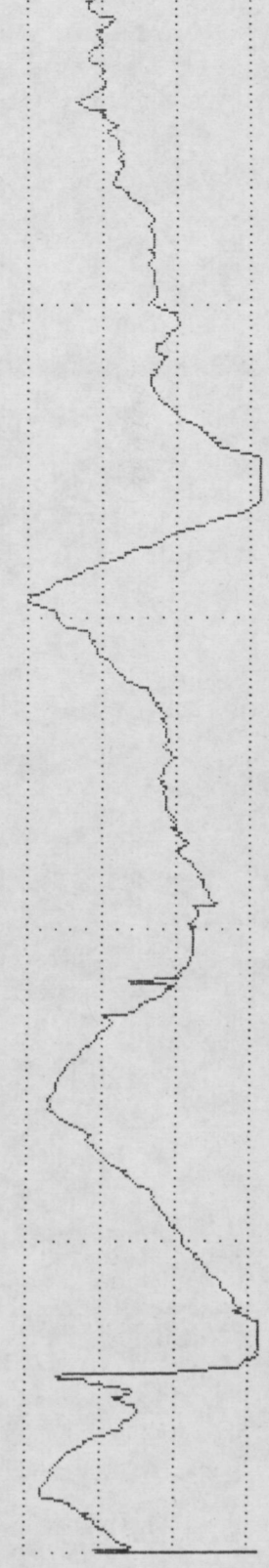
VER 5 UM
HOR LC .80 MM



PERTHOMETER M4P
DAT.
OBJ. Via 12c

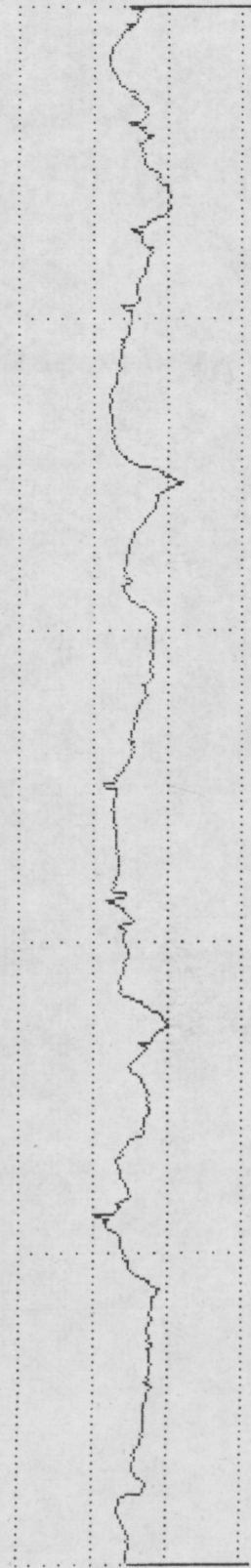
LT 4.8 MM
RA 3.24 UM
RZ 12.09 UM
RMAX 18.88 UM
RPM 6.08 UM
PC<1.3> 010 /CM

VER 5 UM
HOR LC .80 MM



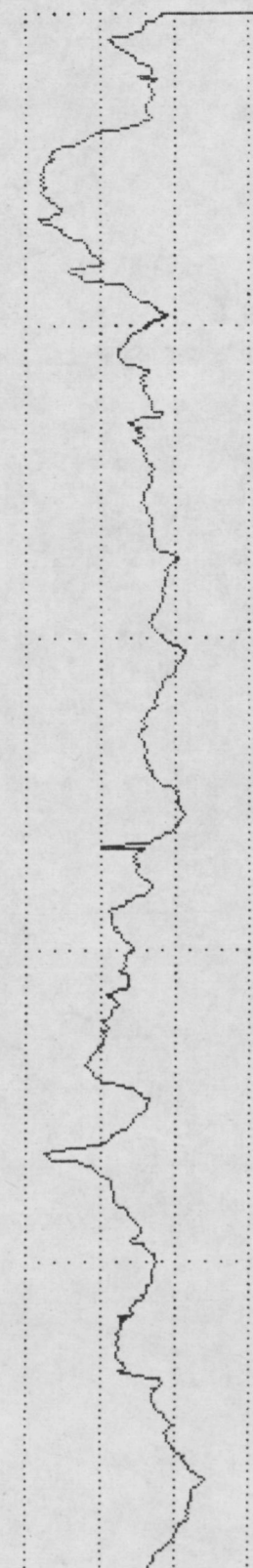
PERTHOMETER M4P
 DAT.
 OBJ. Via 13a
 #
 LT 4.8 MM
 RA 0.86 UM
 RZ 4.02 UM
 RMAX 5.00 UM
 RPM 1.68 UM
 PC<1.3> 015 /CM

VER 5 UM
 HOR LC .80 MM



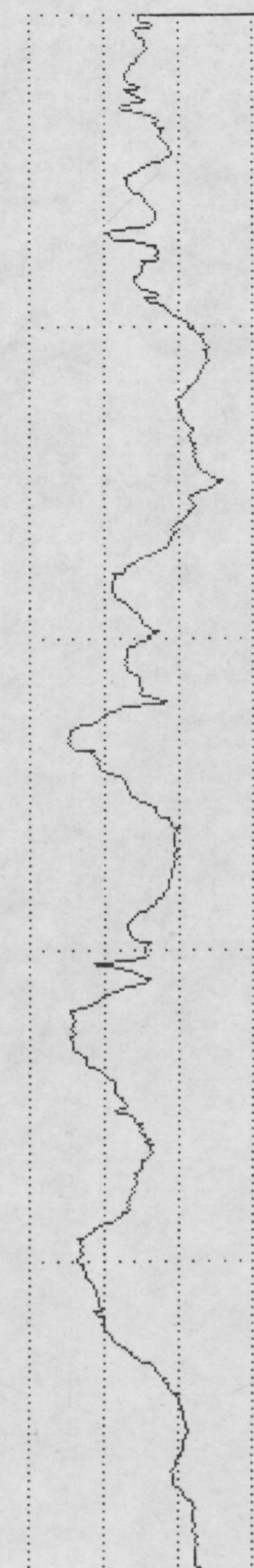
PERTHOMETER M4P
 DAT.
 OBJ. Via 13b
 #
 LT 4.8 MM
 RA 1.71 UM
 RZ 6.40 UM
 RMAX 8.80 UM
 RPM 3.76 UM
 PC<1.3> 020 /CM

VER 5 UM
 HOR LC .80 MM



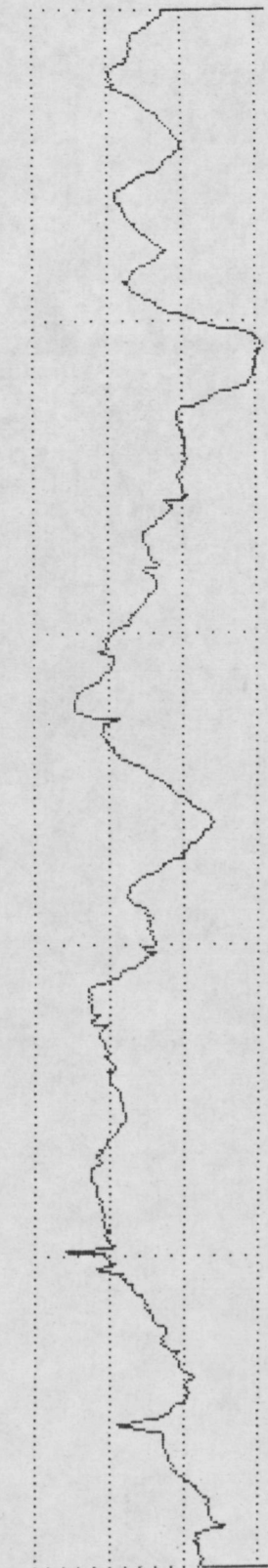
PERTHOMETER M4P
 DAT.
 OBJ. Via 13c
 #
 LT 4.8 MM
 RA 1.98 UM
 RZ 6.86 UM
 RMAX 8.32 UM
 RPM 3.76 UM
 PC<1.3> 017 /CM

VER 5 UM
 HOR LC .80 MM



PERTHOMETER M4P
 DAT.
 OBJ. Via 14a
 #
 LT 4.8 MM
 RA 2.21 UM
 RZ 8.03 UM
 RMAX 10.16 UM
 RPM 3.74 UM
 PC<1.3> 015 /CM

VER 5 UM
 HOR LC .80 MM



PERTHOMETER M4P
DAT.
OBJ. VIA 14b

LT 4.8 MM
RA 2.24 UM
RZ 8.01 UM
RMAX 11.44 UM
RPM 4.52 UM
PC<1.3> 012 /CM

PERTHOMETER M4P
DAT.
OBJ. VIA 14c

LT 4.8 MM
RA 1.94 UM
RZ 9.28 UM
RMAX 13.60 UM
RPM 5.00 UM
PC<1.3> 017 /CM

PERTHOMETER M4P
DAT.
OBJ. VIA 15a

LT 4.8 MM
RA 0.84 UM
RZ 4.40 UM
RMAX 5.84 UM
RPM 1.76 UM
PC<1.3> 017 /CM

PERTHOMETER M4P
DAT.
OBJ. VIA 15b

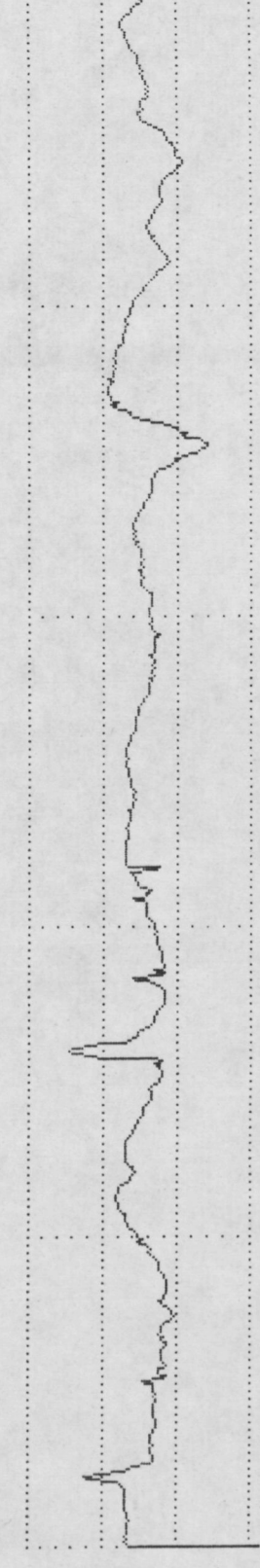
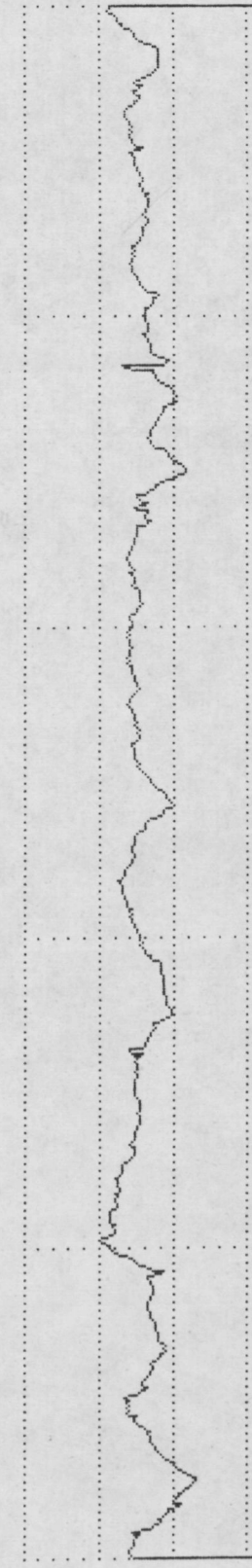
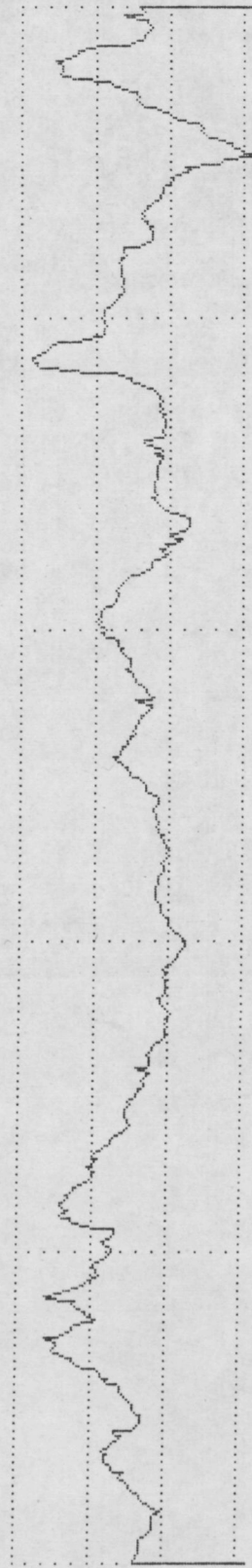
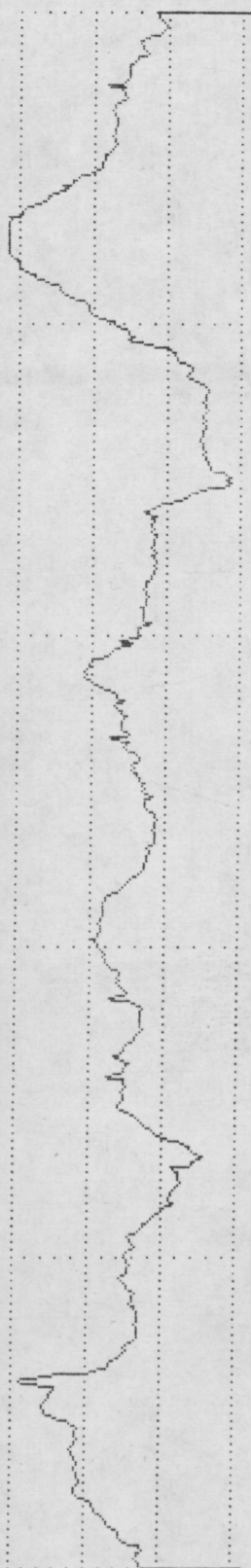
LT 4.8 MM
RA 0.99 UM
RZ 5.20 UM
RMAX 6.80 UM
RPM 2.72 UM
PC<1.3> 015 /CM

VER 5 UM
HOR LC .80 MM

VER 5 UM
HOR LC .80 MM

VER 5 UM
HOR LC .80 MM

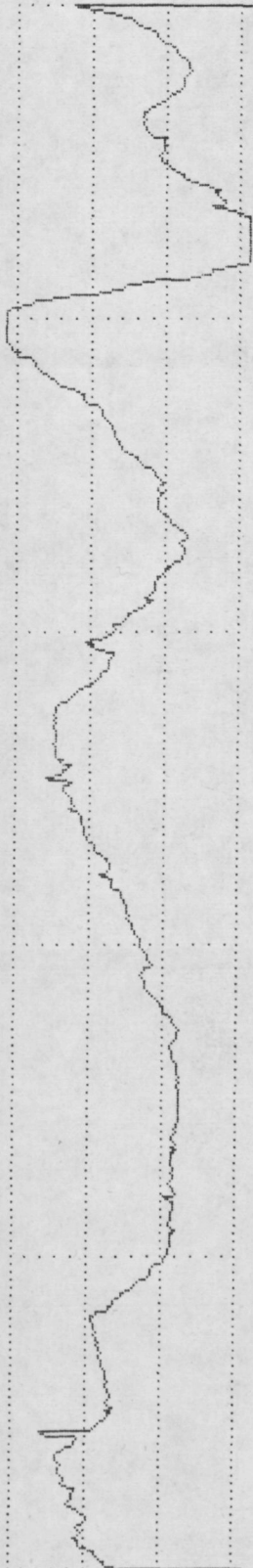
VER 5 UM
HOR LC .80 MM



PERTHOMETER M4P
DAT.
OBJ. VIA 15c

LT 4.8 MM
RA 3.09 UM
RZ 10.78 UM
RMAX 20.48 UM
RPM 6.33 UM
PC<1.3> 007 /CM

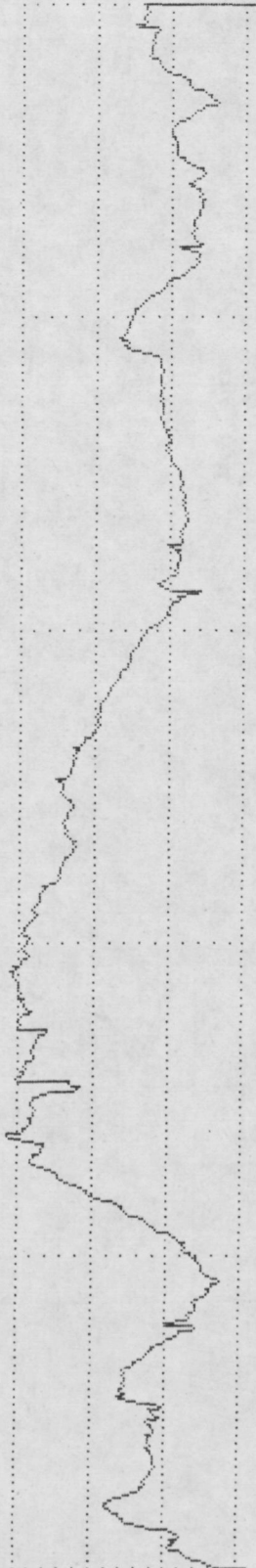
VER 5 UM
HOR LC .80 MM



PERTHOMETER M4P
DAT.
OBJ. VIA 16a

LT 4.8 MM
RA 3.41 UM
RZ 8.09 UM
RMAX 13.20 UM
RPM 3.80 UM
PC<1.3> 010 /CM

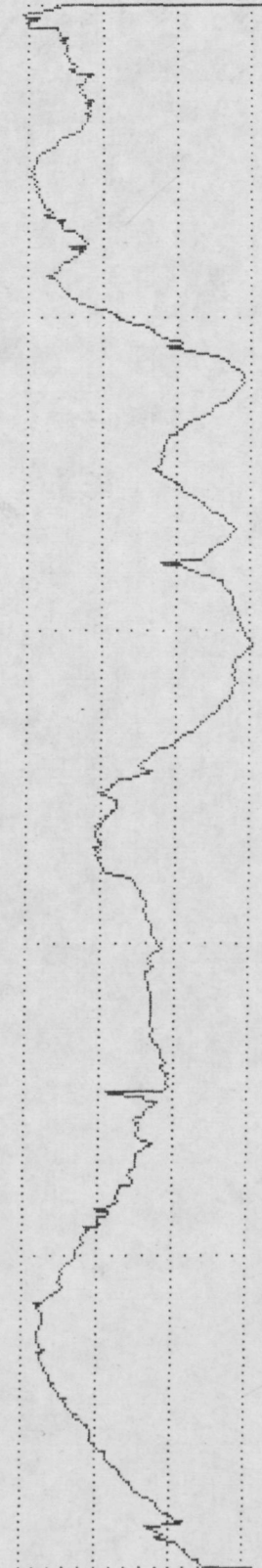
VER 5 UM
HOR LC .80 MM



PERTHOMETER M4P
DAT.
OBJ. VIA 16b

LT 4.8 MM
RA 3.54 UM
RZ 9.04 UM
RMAX 11.52 UM
RPM 4.73 UM
PC<1.3> 007 /CM

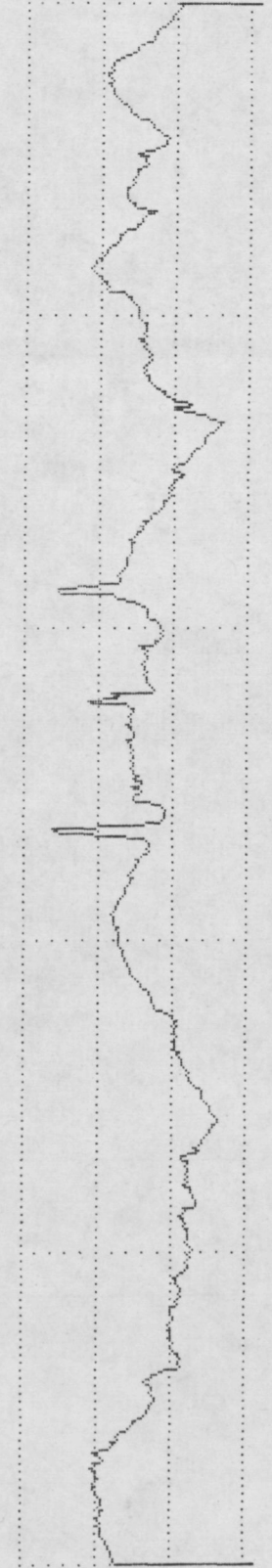
VER 5 UM
HOR LC .80 MM



PERTHOMETER M4P
DAT.
OBJ. VIA 16c

LT 4.8 MM
RA 1.81 UM
RZ 7.68 UM
RMAX 11.20 UM
RPM 3.66 UM
PC<1.3> 020 /CM

VER 5 UM
HOR LC .80 MM



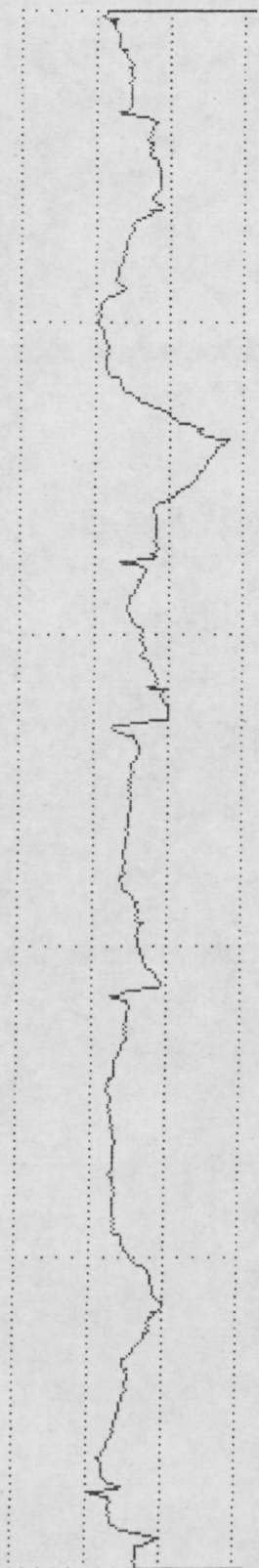
PERTHOMETER M4P
 DAT.
 OBJ. VIA 17a
 #
 LT 4.8 MM
 RA 3.07 UM
 RZ 11.96 UM
 RMAX 20.80 UM
 RPM 6.62 UM
 PC<1.3> 010 /CM

VER 5 UM
 HOR LC .80 MM



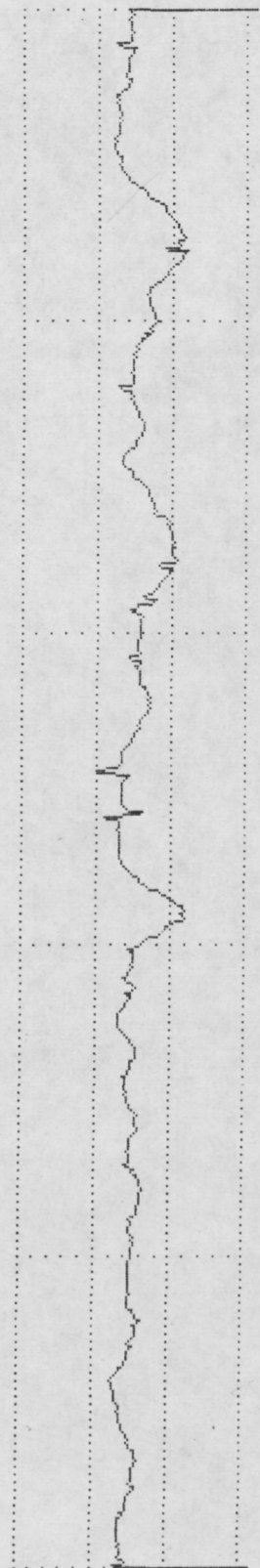
PERTHOMETER M4P
 DAT.
 OBJ. VIA 17b
 #
 LT 4.8 MM
 RA 1.11 UM
 RZ 5.10 UM
 RMAX 8.96 UM
 RPM 2.01 UM
 PC<1.3> 012 /CM

VER 5 UM
 HOR LC .80 MM



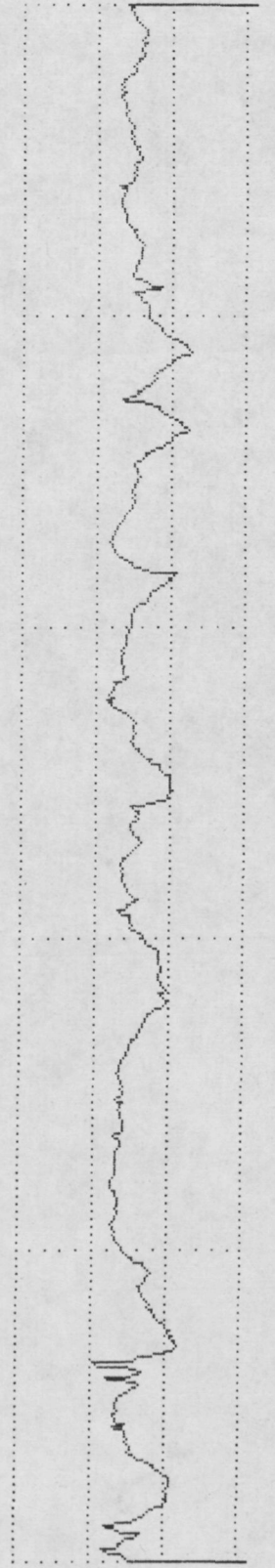
PERTHOMETER M4P
 DAT.
 OBJ. VIA 17c
 #
 LT 4.8 MM
 RA 0.76 UM
 RZ 3.71 UM
 RMAX 6.04 UM
 RPM 1.57 UM
 PC<1.3> 010 /CM

VER 5 UM
 HOR LC .80 MM



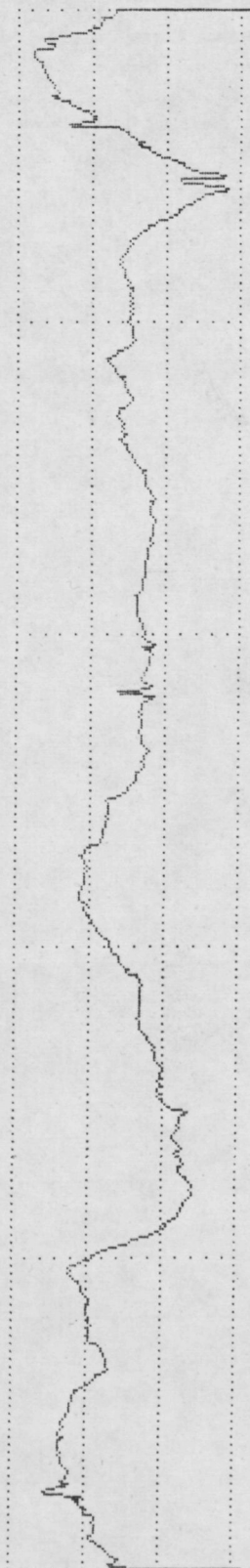
PERTHOMETER M4P
 DAT.
 OBJ. VIA 18a
 #
 LT 4.8 MM
 RA 0.92 UM
 RZ 4.42 UM
 RMAX 5.56 UM
 RPM 1.74 UM
 PC<1.3> 027 /CM

VER 5 UM
 HOR LC .80 MM



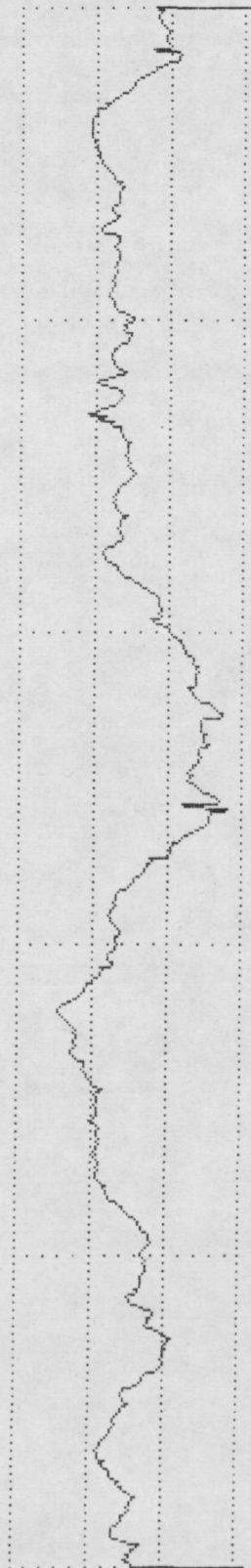
PERTHOMETER M4P
 DAT.
 OBJ. VIA 18b
 #
 LT 4.8 MM
 RA 2.04 UM
 RZ 6.89 UM
 RMAX 13.36 UM
 RPM 3.90 UM
 PC<1.3> 010 /CM

VER 5 UM
 HOR LC .80 MM



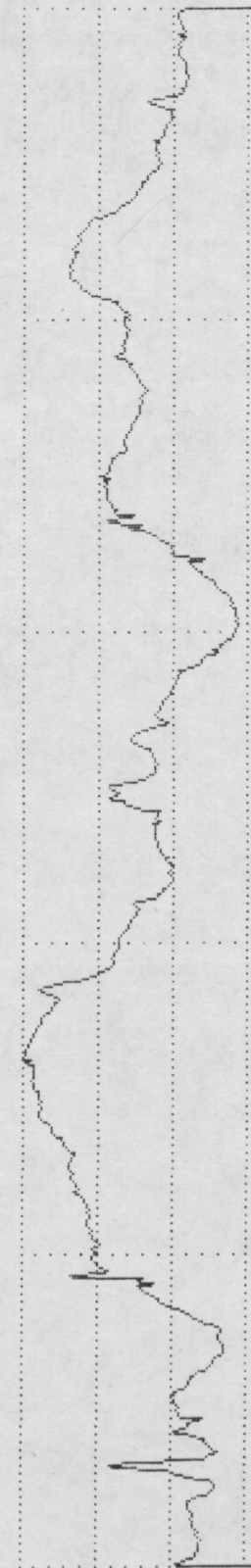
PERTHOMETER M4P
 DAT.
 OBJ. VIA 18c
 #
 LT 4.8 MM
 RA 1.90 UM
 RZ 6.17 UM
 RMAX 7.84 UM
 RPM 2.91 UM
 PC<1.3> 010 /CM

VER 5 UM
 HOR LC .80 MM



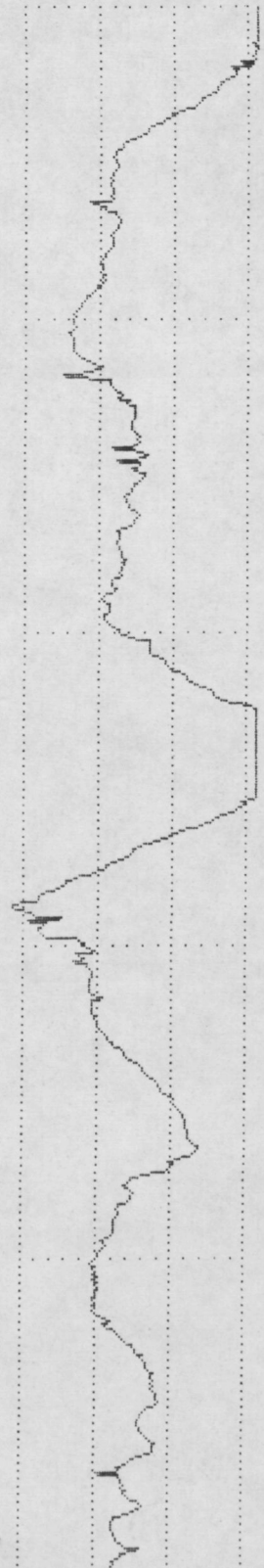
PERTHOMETER M4P
 DAT.
 OBJ. VIA 19a
 #
 LT 4.8 MM
 RA 2.99 UM
 RZ 8.81 UM
 RMAX 10.32 UM
 RPM 4.20 UM
 PC<1.3> 012 /CM

VER 5 UM
 HOR LC .80 MM



PERTHOMETER M4P
 DAT.
 OBJ. VIA 19b
 #
 LT 4.8 MM
 RA 2.95 UM
 RZ 10.97 UM
 RMAX 20.96 UM
 RPM 4.99 UM
 PC<1.3> 015 /CM

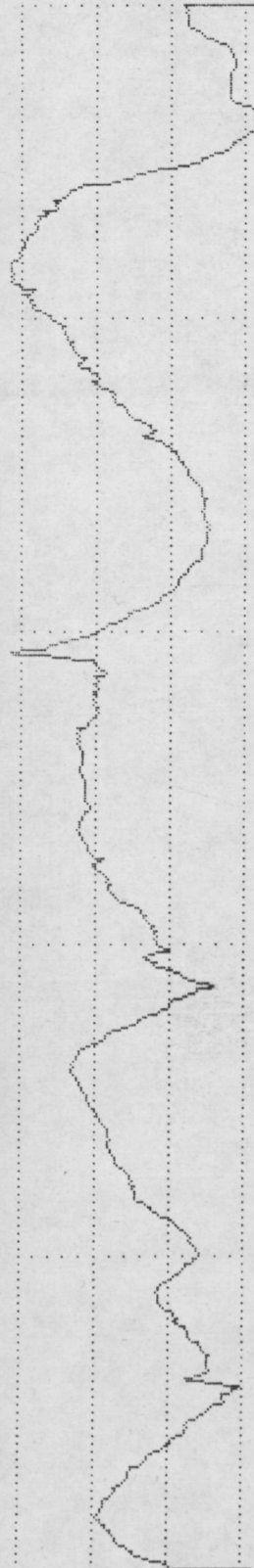
VER 5 UM
 HOR LC .80 MM



PERTHOMETER M4P
DAT.
OBJ. VIA 19c

LT 4.8 MM
RA 3.49 UM
RZ 12.03 UM
RMAX 18.40 UM
RPM 6.30 UM
PC<1.3> 010 /CM

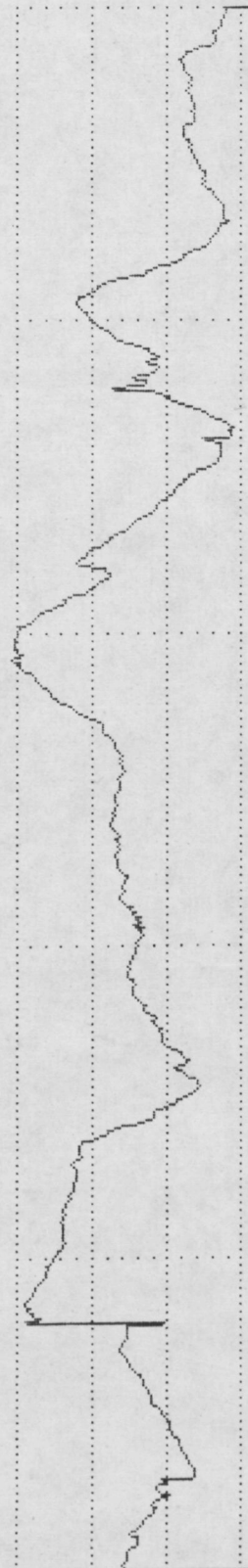
VER 5 UM
HOR LC .80 MM



PERTHOMETER M4P
DAT.
OBJ. VIA 20a

LT 4.8 MM
RA 3.02 UM
RZ 10.99 UM
RMAX 14.64 UM
RPM 6.33 UM
PC<1.3> 012 /CM

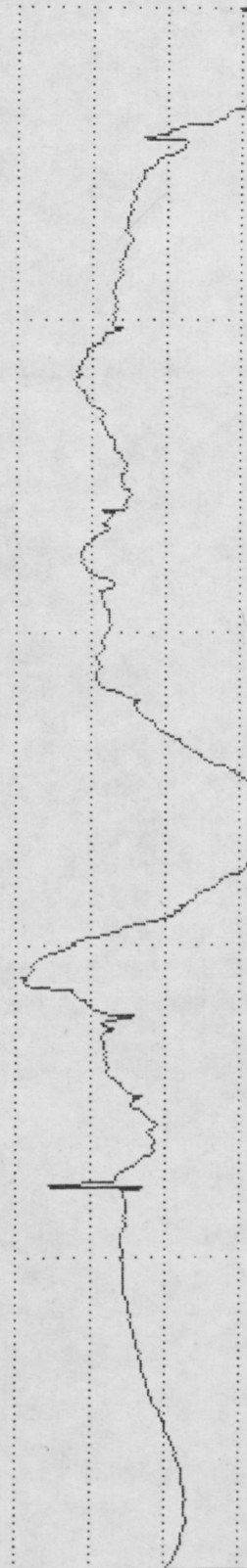
VER 5 UM
HOR LC .80 MM



PERTHOMETER M4P
DAT.
OBJ. VIA 20b

LT 4.8 MM
RA 3.01 UM
RZ 9.24 UM
RMAX 15.68 UM
RPM 3.23 UM
PC<1.3> 007 /CM

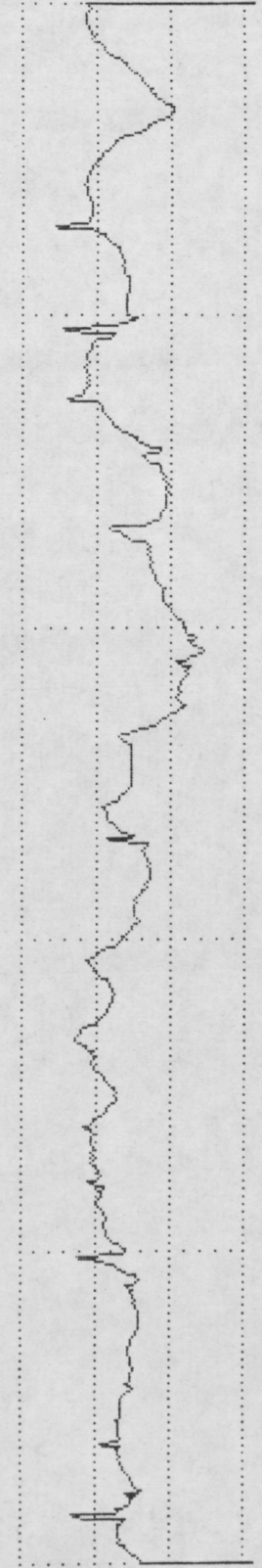
VER 5 UM
HOR LC .80 MM



PERTHOMETER M4P
DAT.
OBJ. VIA 20c

LT 4.8 MM
RA 1.64 UM
RZ 6.35 UM
RMAX 8.24 UM
RPM 4.14 UM
PC<1.3> 010 /CM

VER 5 UM
HOR LC .80 MM



PERTHOMETER M4P
DAT.
OBJ. IPG 1a

LT 4.8 MM
RA 0.62 MM
RZ 1.82 MM
RMAX 3.10 MM
RPM 0.81 MM
PC<1.3> 002 /CM

PERTHOMETER M4P
DAT.
OBJ. IPG 1b

LT 4.8 MM
RA 0.41 MM
RZ 1.24 MM
RMAX 2.06 MM
RPM 0.62 MM
PC<1.3> 002 /CM

PERTHOMETER M4P
DAT.
OBJ. IPG 1c

LT 4.8 MM
RA 0.19 MM
RZ 0.71 MM
RMAX 1.23 MM
RPM 0.43 MM
PC<1.3> 000 /CM

PERTHOMETER M4P
DAT.
OBJ. IPG 2a

LT 4.8 MM
RA 0.29 MM
RZ 1.11 MM
RMAX 1.68 MM
RPM 0.41 MM
PC<1.3> 002 /CM

VER 5 MM
HOR LC .80 MM

VER 5 MM
HOR LC .80 MM

VER 5 MM
HOR LC .80 MM

VER 5 MM
HOR LC .80 MM

