



# Exploración de aguas subterráneas en el Arco Seco de Panamá (Sector de Las Tablas) mediante métodos geofísicos

Alberto Caballero

**ADVERTIMENT.** La consulta d'aquesta tesi queda condicionada a l'acceptació de les següents condicions d'ús: La difusió d'aquesta tesi per mitjà del servei TDX ([www.tdx.cat](http://www.tdx.cat)) i a través del Dipòsit Digital de la UB ([diposit.ub.edu](http://diposit.ub.edu)) ha estat autoritzada pels titulars dels drets de propietat intel·lectual únicament per a usos privats emmarcats en activitats d'investigació i docència. No s'autoritza la seva reproducció amb finalitats de lucre ni la seva difusió i posada a disposició des d'un lloc aliè al servei TDX ni al Dipòsit Digital de la UB. No s'autoritza la presentació del seu contingut en una finestra o marc aliè a TDX o al Dipòsit Digital de la UB (framing). Aquesta reserva de drets afecta tant al resum de presentació de la tesi com als seus continguts. En la utilització o cita de parts de la tesi és obligat indicar el nom de la persona autora.

**ADVERTENCIA.** La consulta de esta tesis queda condicionada a la aceptación de las siguientes condiciones de uso: La difusión de esta tesis por medio del servicio TDR ([www.tdx.cat](http://www.tdx.cat)) y a través del Repositorio Digital de la UB ([diposit.ub.edu](http://diposit.ub.edu)) ha sido autorizada por los titulares de los derechos de propiedad intelectual únicamente para usos privados enmarcados en actividades de investigación y docencia. No se autoriza su reproducción con finalidades de lucro ni su difusión y puesta a disposición desde un sitio ajeno al servicio TDR o al Repositorio Digital de la UB. No se autoriza la presentación de su contenido en una ventana o marco ajeno a TDR o al Repositorio Digital de la UB (framing). Esta reserva de derechos afecta tanto al resumen de presentación de la tesis como a sus contenidos. En la utilización o cita de partes de la tesis es obligado indicar el nombre de la persona autora.

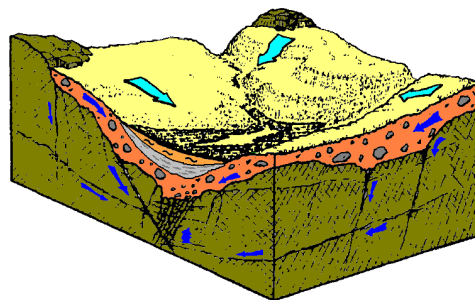
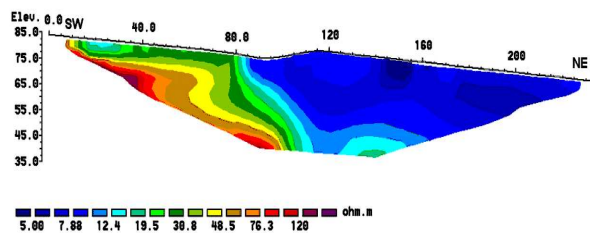
**WARNING.** On having consulted this thesis you're accepting the following use conditions: Spreading this thesis by the TDX ([www.tdx.cat](http://www.tdx.cat)) service and by the UB Digital Repository ([diposit.ub.edu](http://diposit.ub.edu)) has been authorized by the titular of the intellectual property rights only for private uses placed in investigation and teaching activities. Reproduction with lucrative aims is not authorized nor its spreading and availability from a site foreign to the TDX service or to the UB Digital Repository. Introducing its content in a window or frame foreign to the TDX service or to the UB Digital Repository is not authorized (framing). Those rights affect to the presentation summary of the thesis as well as to its contents. In the using or citation of parts of the thesis it's obliged to indicate the name of the author.

Facultat de Geologia  
Departament de Geoquímica, Petrologia i Prospecció Geològica

**TESIS DOCTORAL**

**EXPLORACIÓN DE AGUAS SUBTERRÁNEAS EN  
EL ARCO SECO DE PANAMÁ (SECTOR DE LAS  
TABLAS) MEDIANTE MÉTODOS GEOFÍSICOS**

**ALBERTO CABALLERO**



**Barcelona, 2009**

# **Capítulo 8**

## **Referencias**



- Abratis, M., Wörner, G., 2001. Ridge collision, slab-window formation, and the flux of Pacific asthenosphere into the Caribbean realm. *Geology* 29, 127– 130.
- Adamek S., Frohlich C., Pennington W. 1988. Seismicity of the Caribbean-Nazca Boundary: Constraints on Microplate Tectonics of the Panamá Region. *Journal of Geophysical Research* 93, (B3), 2053-2075.
- Angelillo, V., Cervera, G., Chapellier, D., 1991. La gravimétrie expéditive appliquée à la recherche d'aquifères en zone aride. Cas de la nappe alluviale du Teloua (Agadez, Niger). *Geoexploration*, 27: 179–192.
- Arabelos D. y Tziavos I. N. (1996). Combination of ERS-1 and TOPEX altimetry for precise geoid and gravity recovery in the Mediterranean Sea. *Geophysical Journal International*, 125: 285-302.
- Aravena R. 2001. Comunicación Personal.
- Armbrust G. A., Chlumsky G. F., Meyer K. L., Sandefur R. L. 2003. Mineral Reserve Audit Quema-Project Republic of Panama. Internal Report. 88 págs.
- Avila E. A., Brouard U. M., Iriso J. V., Benito J. A. P., González A. B. E., García S. I., Pagán P. M. 2004. Electrical Resistivity Tomography as a Technique for Studying and Modelling Saline Water Intrusion. 18 SWIM. Cartagena 2004, Spain. (Ed. Araguás, Custodio and Manzano). IGME. 341-351.
- Barckhausen U., Ranero C. R., Huene R. V., Cande S. C., Roeser H. A. 2001. Revised tectonic boundaries in the Cocos Plate off Costa Rica: Implications for the segmentation of the convergent margin and for plate tectonic models. *Journal of Geophysical Research* 106 (B9), 19207–19220.
- Barckhausen, U., Ranero, C.R., von Huene, R., Cande, S.C., Roeser, H.A., 2001. Revised tectonic boundaries in the Cocos Plate off Costa Rica; implications for the segmentation of the convergent margin and for plate tectonic models. *J. Geophys. Res.* 106, 19207–19220.
- Barker R. 1992. A simple algorithm for electrical imaging of the subsurface. *First Break* 10 (2), 53-62
- Barker R. D. 1981. The Offset Wenner of Electrical Resistivity Sounding and its Use with a multicore Cable. *Geophysical Prospecting* 29 (1), 128-143.
- Bhattacharya P. K., Patra H. P. 1968. Direct current geoelectric Principles and interpretation. Elsevier publishing company, Amsterdam.

- Bhattacharyya B. K, Sweeney R. E. and Godson R. H., 1979. Integration of aeromagnetic data acquired at different times with varying elevation and line spacings. *Geophysics*, 44 (4): 742-752.
- Boonchaisuk S., Vachiratienchai C., Siripunvaraporn W. 2008. Two-dimensional direct current (DC) resistivity inversion: Data space Occam's approach. *Physics of the Earth and Planetary Interiors* 168, 204–211.
- Bowin C. O. 1976. The Caribbean: Gravity Field and Plate Tectonics. Geological Society of America Special Paper 169, V-79.
- Bowin C., 1976. Caribbean gravity field and plate tectonics. Geological Society of America, Special Paper 169, 79 p.
- Buchs, D. 2008. Late Cretaceous to Eocene geology of the South Central American forearc area (southern Costa Rica and western Panama): Initiation and evolution of an intra-oceanic convergent margin. Tesis Doctoral, Faculté des géosciences et de l'environnement de l'Université de Lausanne.
- Caballero A., Jaén J., Bayard C., Zorita M., Perez L., Camacho A. E., Vergara E., Salinas P., Luque N., Piersol J., Santamaría L. 2003. Caracterización Preliminar del Acuífero de Las Tablas y Alrededores. Universidad de Panamá-Vicerrectoría de Investigación y Postgrado. Reporte de Investigación. 52 págs.
- Cady 1980. Calculation of gravity and magnetic anomalies of finite-lengthright polygonal prisms. *Geophysics*, 45(10): 1507-1512
- Camacho A. E. 2003. Sismotectónica del extremo Norte de la Zona de Fractura de Panamá. *Tecnociencia* 5 (2),139-151.
- Camacho A. E. 2005. Los Terremotos en el Istmo de Panamá. Laboratorio de Geofísica e Hidrogeología. Universidad de Panamá. 10 págs.
- Camacho A. E., Viquez V. 1993. Historical seismicity of the North Panama Deformed Belt. *Revista Geología de America Central* 15, 49-64.
- Camacho E., Lindholm C., Dahle A., Bungum H. 1997. Seismic hazard assessment in Panama. *Engineering Geology* 48, 1-6.
- Carpenter E. W. 1955. Some notes concerning the Wenner configuration. *Geophysical Prospecting* 3 (4), 388-402.
- Carpenter E. W., Habberjam G.M. 1956. A tripotential method of resistivity prospecting. *Geophysics* 21, 455-469.

- Casas A., Himi M., Diaz Y., Pinto V., Font X., Tapias J. C. 2008. Assessing Aquifer Vulnerability to pollutants by electrical resistivity Tomography (ERT) at a nitrate vulnerable zone in NE Spain. *Environmental Geology* 54, 515-520.
- Case J. E. 1974. Oceanic Crust Forms Basement of Eastern Panamá. *Geological Society of America Bulletin* 85, 645-652.
- Case J. E., Duran S. L. G., López R., Alfonso R., Moore W. R. 1971. Tectonic Investigation in Western Colombia and eastern Panama. *Geological Society of America Bulletin* 82 (10), 2685-2712.
- Case J. E., Holcombe T. L. 1980. Geologic-Tectonic Map of the Caribbean Region. U.S. Geological Survey Miscellaneous Investigation series Map I -1100, 2 hojas, escala 1:2,500,000.
- Castro, S. 2009. Dirección Regional del IDAAN – Las Tablas. Comunicación personal.
- Christensen N. B. 2000. Difficulties in determining electrical anisotropy in subsurface investigations. *Geophysical Prospecting* 48 (1), 1-19.
- Claerbout J. F., Muir F. 1973. Robust modeling with erratic data. *Geophysics* 38 (1), 826–844.
- Clark A. H., Farrar E., Kents P. 1977. Potassium-Argon Age of the Cerro Colorado Porphyry Copper Deposit, Panamá. *Geology* 72, 1154-1158.
- Comisión de Reforma (C.R.A.). 1968. Catastro Rural de Tierras y Aguas, Volumen IV Aguas. 271 págs.
- Consorcio Empresa Consultora de Ingeniería y Arquitectura, S.A. (ECAISA); Groundwater Development Consultants (LTD). (GDC).1987. Estudio de las Aguas Subterráneas para Riego a base de Pozos Profundos en el Arco Seco de la República de Panamá. Informe de Progreso. 230 págs.
- Constable S. C., Parker R. L., Constable C. G. 1987. Occam's inversion: A practical algorithm for generating smooth models from electromagnetic sounding data. *Geophysics* 52, 289-300.
- Contraloría General de la República de Panamá (CGR)-Instituto Nacional de Estadística y Censo. 2001. Meteorología.
- Contraloría General de la República de Panamá (CGR)-Instituto Nacional de Estadística y Censo. 2009. Panamá en Cifras: años 2004-2008.

- Cowan H. A., Machette M. N., Haller K., Dart R. 1998. Map and database of Quaternary faults and folds in Panamá and Its offshore Regions. International Lithosphere Program, Task Group II-2, Major Active Faults of the World, U.S. Geological Survey. Open File 98-779.
- Custodio E., Llamas M.R. 2001. Hidrología subterránea: Tomo I. Ed. Omega, Barcelona.
- Dahlin T. 1996. 2D resistivity for environmental and engineering application. First Break 14, (7), 275-283.
- Dahlin T., Loke M.H. 1998. Resolution of 2-D Wenner resistivity imagen as assessed by numerical modelling. Journal of Applied geophysics 38, 237-249.
- Davis P. A., Greenhalgh S. A., Merrick N. P. 1980. Resistivity sounding computation with any array using a single digital filter. Bulletin of the Australian Society of Exploration Geophysics 11, 54-62.
- de Boer J. Z., Defant M. J., Stewart R. H., Bellon H. 1991. Evidence for active subduction below western Panama. Geology 19, 649-652.
- de Boer J. Z., Defant M. J., Stewart R. H., Restrepo J. F., Clark L. F., Ramirez A. H. 1988. Quaternary calc-alkaline volcanism in western Panama: Regional variation and implication for the plate tectonic framework. Journal of South American Earth Sciences 4 (3), 275-293.
- Defant M. J., Richerson P. H., de Boer J. Z., Stewart R. H., Maury R. C., Bellon H., Drummond M. S., Feigenson M., Jackson T. E. 1991. Dacite Genesis via both Slab Melting and Differentiation: Petrogenesis of La Yeguada volcanic Complex, Panamá. Journal of Petrology 32 (6), 1001-1142.
- deGroot-Hedlin C., Constable S. 1990. Occam's inversion to generate smooth, two-dimensional models from magnetotelluric data. Geophysics 55, 1613-1624.
- del Giudice D., Recchi G. 1969. Geología del Area del Proyecto Minero de Azuero. Informe Técnico preparado para el Gobierno de la República de Panamá por las Naciones Unidas. 53 págs.
- Dengo G. 1967. Geological Structure of Central America: Studies in Tropical Oceanography: Miami, Florida, Miami University 5, 56- 73. In: Case J. E. 1974. Oceanic Crust Forms Basement of Eastern Panamá. Geological Society of America Bulletin 85, 645-652.



- Denyer P., Baumgartner P. O., Gazel E. 2006. Characterization and Tectonics implications of the Mesozoic-Cenozoic Oceanic Assemblages of Costa Rica and Western Panamá. *Geologica Acta* 4 (1), 219-235.
- Edwards L. S. 1977. A modified pseudosection for resistivity and induced-polarization. *Geophysics* 42, 1020-1036.
- Ellis R. G., Oldenburg D. W. 1994. Applied geophysical inversion. *Geophysical Journal International* 116, 5-11.
- Empresa de transmisión Electrica S.A. (ETESA). 1999. Mapa Hidrogeológico de Panamá. Escala 1:1,000,000. Texto explicativo.
- Empresa de transmisión Electrica, S.A. (ETESA) -2006 - Estadística de lluvias en la zona de Las Tablas.
- Ferenčić A. 1971. Metallogenic provinces and epochs in southern Central America. *Mineralium Deposita* 6 (1), 77-88. DOI 10.1007/ BF00207119.
- Ferenčić A. 1970. Porphyry Copper Mineralization in Panamá. *Mineralium Deposita* 5 (4), 383-389. DOI 10.1007/ BF00206735.
- Fisher D. M., Gardner T. W., Marshall J. S., Sak P. B., Protti M. 1998. Effect of subducting sea-floor roughness on forearc kinematics, Panama Pacific coast, Costa Rica. *Geology* 26, 467-470.
- Fisher S. P., Pessagno E. A. 1965. Upper Cretaceous strata of northwestern Panamá. *American Association of Petroleum Geologist Bulletin* (49), 433-444.
- Fox R. C., Hohmann G. H., Killpack T. J., Rijo L. 1980. Topographic effects in resistivity and induced-polarization surveys. *Geophysics* 45 (1), 75-93.
- Gat J. R. 1981. Isotopic Fractionation. In : *Stable Isotope Hydrology Deuterium and Oxygen-18 in the Water Cycle*. Editado por International Atomic Energy Agencies, Viena, 21-32.
- Ghosh D. P. 1971a. The application of linear filter theory to the direct interpretation of geoelectrical resistivity sounding measurements. *Geophysical Prospecting* 19 (2), 192-217.
- Ghosh D. P. 1971b. Inverse filter coefficients for the computation of apparent resistivity standard curves for a horizontally stratified earth. *Geophysical Prospecting*, 19 (4), 769-775.

- Griffiths D. H.; Barker R. D. 1993. Two-dimensional resistivity imaging and modelling in areas of complex geology. *Journal of Applied Geophysics* 29 (3-4), 211-226.
- Habberjam G. M., Watkings G. E. 1967a. The use of square configuration in resistivity prospecting. *Geophysical Prospecting* 15 (3), 468-479.
- Habberjam G. M., Watkings G. E. 1967b. The reduction of lateral effects in resistivity probing. *Geophysical Prospecting* 15 (2), 221-235.
- Hardy, N.C., 1991. Tectonic evolution of the easternmost Panama Basin: some new data and insights. *J. South Am. Earth Sci.* 4, 261– 269.
- Hardy, N.C., 1991. Tectonic evolution of the easternmost Panama Basin: some new data and insights. *J. South Am. Earth Sci.* 4, 261– 269.
- Himi, M. 2009. Comunicación personal.
- Hobbs B. A., Reading A. M. 1994. Shallow Fault location in coal measures using Offset Wenner resistivity Profiling. *Geophysical Prospecting* 42 (4), 343-356.
- Hoernle K., Bogaard P. van den, Wenner R.; Lissina B., Hauff F., Alvarado G., Garbe-Schönberg D. 2002. Missing history (16-71 ma) of the Galapagos Hot Spot: Implications for the tectonic and Biological evolution of the Americas. *Geology* 30 (9), 795-798.
- Hoernle K., Hauff F., Bogaard P. van den. 2004. 70 m.y. history (139-69 ma) for the Caribbean large igneous province. *Geology* 32 (8), 697-700.
- Hoffmann R., Dietrich P. 2004. An approach to determine equivalent solutions to the geoelectrical 2D inversion problem. *Journal of Applied Geophysics* 56, 79–91.
- Hoversten G.M., Dey A., Morrison H. F. 1982. Comparison of Five Least-Squares Inversion Techniques in Resistivity Sounding. *Geophysical Prospecting* 30 (5), 688-715.
- Huggett R. J. - 2003 - *Fundamentals of Geomorphology: Routledge Fundamentals of Physical Geography*. Ed. Routledge, London.
- Huntoon P. W. , Lundy D. A. 1977. Fracture-Controlled Ground-Water Circulation and Well Siting in the Vicinity of Laramie, Wyoming. *Ground Water* 7 (5), 463-469.
- IAEA. 2001. <http://www.iaea.org/worldatom/Reference/Databases/>

- Inmann J.R.-1975- Resistivity inversion with ridge regression. *Geophysics* 40 (5), 798-817.
- Johnston, S.T., Thorkelson, D.J., 1997. Cocos– Nazca slab window beneath Central America. *Earth and Planetary Science Letters*, 146, 465–474.
- Kellog J.N., Vega V. 1995. Tectonic development of Panamá, Costa Rica, and the Colombian Andes: Constrains from Global Positioning Systems geodetic studies and gravity. In: *Geologic and tectonic development of the Caribbean Plate boundary in Southern Central America*. (ed. P. Mann), Geological Society of America Special Paper 295,75-90.
- Kellogg, J.N., y Vega, V. (1995) Tectonic development of Panama, Costa Rica, and the Colombian Andes: Constraints from Global Positioning System geodetic studies and gravity, En: *Geologic and Tectonic Development of the Caribbean plate boundary in southern Central America*, vol. 295, Geological Society of America Special Paper, (editor P. Mann), pp. 75-90.
- Kesler E. S., Sutter J., Issigonis M. J., Jones L. M., Walker R. L. 1977. Evolution of Porphyry Cooper Mineralization in an Oceanic Arc: Panamá. *Economic Geology* 72, 1142-1153.
- Kesler S. E. 1978. Metallogenesis of the Caribbean region. *Journal of the Geological Society* 135 (4), 429-441. DOI: 10.1144/gsjgs.135.4.0429.
- Kirsch R. 2006. *Groundwater Geophysics*. Ed. Springer Verlag, Berlin.
- Koefoed O. 1970. A fast method for determining the layer distribution from the raised kernel function in geoelectrical sounding. *Geophysical Prospecting* 18 (4), 564 – 570.
- Koefoed O. 1976. Progress in the direct interpretation of resistivity soundings: An algorithm. *Geophysical Prospecting* 24 (2), 233-240.
- Koefoed O. 1979. *Geosounding Principles-1: Resistivity Sounding Measurements*. Methods in Geochemistry and Geophysics, 14. Elsevier, Amsterdam.
- Kolarsky R. A., and Mann P. 1995. Structure and neotectonics of an oblique-subduction margin, southwestern Panama. In: *Geologic and tectonic development of the Caribbean Plate boundary in Southern Central America*. (ed. P. Mann), Geological Society of America Special Paper 295, 131-157.

- Kolarsky, R. A., Mann P., Monechi S. 1995. Stratigraphic development of southwestern Panama as determined from integration of marine seismic data and onshore geology. In: Geologic and tectonic development of the Caribbean Plate boundary in Southern Central America. (ed. P. Mann), Geological Society of America Special Paper 295, 159-200.
- Kondolf M. G., Montgomery D. R., Piégay H., Schmitt L. 2003. Geomorphics classification of rivers and streams. In: Tools in fluvial geomorphology. Ed. G. M. Kondolf & H. Piégay, ed. Wiley, West Sussex, 171-204.
- Larsson I. 1985. Aguas Subterráneas en rocas duras-Proyecto 8.6 del programa Hidrológico Internacional. (ed. Ingemar Larsson), Unesco, Paris.
- Loke M. 2004. Tutorial: 2-D and 3-D electrical imaging surveys. 136 págs.
- Loke M. H., Acworth I., Dahlin T. 2003. A comparison of smooth and blocky inversion methods in 2D electrical imaging surveys. *Exploration Geophysics*, 34, 182-187.
- Loke M. H., Barker R. D. 1996. Rapid least-squares inversion of apparent resistivity pseudosections by a quasi-Newton method. *Geophysical Prospecting* 44 (1) 131-152.
- Londale P., Klitgord K. D. 1978. Structure and tectonic history of the eastern Panamá Basin. *Geological Society of America Bulletin* 89, 981-999.
- Lonsdale, P., Klitgord, K.D., 1978. Structure and tectonic history of the eastern Panama Basin. *Geol. Soc. Amer. Bull.* 89, 981–999. Wilson, D.S., 1996. Fastest known spreading on the Miocene Cocos – Pacific plate boundary. *Geophysical Research Letters*, 23, 3003– 3006.
- Lowrie A., Aitken T., Grim P., McRaney L. 1979. Fossil spreading center and faults within the Panamá Fracture Zone. *Marine Geophysical Research* 4, 153-166.
- Lozano Tena M. V., Sánchez Fabre M. 1997. Documentos básicos para la realización de mapas geomorfológicos. In: *Cartografía Geomorfológica Básica y Aplicada*, (ed. J. L. Peña Manné), Geoforma Ediciones, Logroño.
- MacDonald A. M., Burleigh J., Burgess W. G. 1999. Estimating transmissivity from surface resistivity soundings: an example from the Thames Gravels. *Quarterly Journal of Engineering Geology* 32, 199-205.

- Maillet R. 1947. The fundamental equations of electrical prospecting. *Geophysics* 12 (4), 529-556.
- Mann P. y Kolarsky R.A., 1995. Panama Deformed Belt: Structure, Age and Neotectonic Significance, En: *Geologic and Tectonic Development of the Caribbean plate boundary in southern Central America*, vol. 295, Geological Society of America Special Paper, (editor P. Mann), pp. 111-130.
- Mann P., Burke K. 1984. Neotectonics of the Caribbean. *Review of Geophysics and Space Physics* 22 (4), 309-362.
- Marshall J. S., Fisher D. M. 2000. Central Costa Rica deformed belt: Kinematics of diffuse faulting across the western Panama block. *Tectonics* 19 (3), 468-492.
- Marshall J. S., Idleman B. D., Gardner T. W., Fisher D. M. 2003. Landscape evolution within a retreating volcanic arc, Costa Rica. *Geology* 31 (5), 419-422.
- Martínez P. E., Martínez P., Castaño S. 2006. *Fundamentos de Hidrogeología*. Ediciones Mundi-Prensa, Barcelona.
- Martorana R., Fiandaca G., Casas Ponsati A., Cosentino P. L. 2009. Comparative tests on different multi-electrode arrays using models in near-surface geophysics. *Journal of Geophysics and Engineering* 6, 1–20. doi:10.1088/1742-2132/6/1/001.
- McGillivray P. R., Oldenburg D. W. 1990. Methods for calculating Frechet derivatives and sensitivities for nonlinear inverse problem: A comparative study: *Geophysical Prospecting* 38 (5) 499–524.
- McMillan, I., Gansa, P.B., Alvarado, G.(2004) Middle Miocene to present plate tectonic history of the southern Central American Volcanic Arc. *Tectonophysics*, 392: 325– 348
- Medeiro W. E., Lima O. A. L. 1990. A geoelectrical investigation for ground water in Crystalline Terrains of Central Bahía, Brazil. *Ground Water* 28 (4), 518-523.
- Merrick N. P. 1974. The pole-multidipole method of geoelectrical sounding. *Bulletin of the Australian Society of Exploration Geophysicists* 5, 221-235.
- Ministerio de Comercio e Industrias de la República de Panamá – Dirección General de Recursos Minerales, (MICI). 1991. *Mapa Geológico de Panamá*. Escala: 1:250,000.

- Ministerio de Comercio e Industrias de la República de Panamá, (MICI). 1999. Agua. Agua potable. Definiciones y Requisitos Generales. Reglamento Técnico DGNTI-COPANIT. 41 págs.
- Ministerio de Comercio e Industrias de la República de Panamá, (MICI). 1988. Informe Final-Parte I: Geología y ocurrencias de minerales en tres sectores de Panamá. Elaborado por Swedish Geological Internacional. 50 págs.
- Ministerio de Obras Públicas-Instituto Geográfico Nacional Tommy Guardia (MOP). 2007. Atlas Nacional de la República de Panamá.
- Molnar P., Sykes L. R. 1969. Tectonics of the Caribbean and Middle America regions from Focal Mechanism and Seismicity. Geological Society of America Bulletin 80, 1639-1684.
- Monteiro Santos F.A., Sultan S.A., Represas P., El Sorady A. L. 2006. Joint inversion of gravity and geoelectrical data for groundwater and structural investigation: application to the northwestern part of Sinai, Egypt. Geophysical Journal International 165, 705–718.
- Montero W. 2001. Neotectónica de la región central de Costa Rica: Frontera Oeste de la Microplaca de Panamá. Revista Geológica de América Central 4, 29-56.
- Morelli, C. Gantor, T. Honkasalo, R.K. McConnell, J.G. Tanner, B. Szabo, V. Votila and C.T. Whalen, 1971. The International Gravity Standardisation Net, Pub. Spec. No. 4, Bull. Géodésique.
- Nativ R., Halleran A., Hunley A. 1997. Evidence for Ground-Water Circulation in the Brine-Filled Aquitard, Oak Ridge, Tennessee. Ground Water 35 (4), 647-659.
- Nettleton, L.L., 1954. Regional, residuals and structures. Geophysics, 19, 1-22.
- Nyquist J. E., Peake J. S., Roth, M. J. S. 2007. Comparison of an optimized resistivity array with dipole-dipole soundings in karst terrain. Geophysics 72 (4), 139–144.
- Okaya D. A., Ben-Avraham Z. 1987. Structure of the continental margin of southwestern Panamá. Geological Society of American Bulletin 99, 792-802.
- Olayinka A. I., Weller A. 1997. The inversion of geoelectrical data for hydrogeological applications in crystalline basement areas of Nigeria. Journal of Applied Geophysics 37, 103-115.

- Olayinka A. I., Yamaranci U. 2000. Use of block inversion in the 2-D interpretation of apparent resistivity data and its comparison with smooth inversion. *Journal of Applied Geophysics* 45, 63-81.
- Olayinka A. I., Yamaranci U. 2002. Smooth and sharp-boundary inversion of two dimensional pseudosection data in presence of a decrease in resistivity with depth. *European Journal of environmental and Engineering Geophysics* 7, 139-165.
- Orellana E. 1982. *Prospección Geoeléctrica en Corriente Continua*, vol. 1. Segunda edición, ed. Paraninfo, Madrid.
- Payne B. R. 1983. Introduction. In: *Guidebook on Nuclear Techniques in Hydrogeology*, Editado por IAEA VIENA pp. 1-15.
- Piersol J. 2005. *Evaluating Groundwater Supply Sustainable Capacity and Pollution Threats for an Urban Well Field in a Semi-Arid Coastal Region: Aguadulce, Panama*. Masters Thesis, University of Waterloo.
- Pindell J., Kennan L. 2009. Tectonic evolution of the Gulf of Mexico, Caribbean and northern South America in the mantle reference frame: an update. In: *The Geology and evolution of the region between North and South America* James K., Lorente, M.A., Pindel J. (ed.) . Geological Society of London, Special Publication, Preprint.
- Plata T. J.L. 2000. Técnicas convencionales de geofísica de superficie aplicadas a la hidrogeología. In: *Actualidad de las Técnicas Geofísicas aplicadas en hidrogeología* (ed. Alarcón M. Olmo & López Geta J.A.), ITGM, España, 21-32.
- Porsani M. J., Niwas S., Ferreira N. 2001. Robust inversion of vertical electrical sounding data using a multiple reweighted least-squares method. *Geophysical Prospecting* 49, 255-264.
- Pratt T. L., Holmes M., Schweig E. S., Gombert J., Cowan H.A. 2003. High resolution seismic imaging of faults beneath Limón Bay, northern Panama Canal, Republic of Panama. *Tectonophysics* 368, 211–227. doi: 10.1016/S0040-1951(03)00159-8
- Rapp R.H., Wang Y.M y Pavlis N.K. (1991) *The Ohio State 1991 geopotential and sea surface topography harmonic coefficient models*. Report 410. Dept. Geod. Sci. Surveying. Ohio State University, Columbus.

- Reynolds J. M. 1997. An Introduction to Applied and Environmental Geophysics. Ed. Wiley and Sons, New York.
- Rijo L., Pelton W. H., Feitosa E. C., Ward S. H. 1977. Interpretation of apparent resistivity data from Apodi Valley, Rio Grande Do Norte, Brazil. *Geophysics* 4 (4), 811-822.
- Robain H., Albouy Y., Dabas M., Descloitres M, Camerlynck C., Mechler P., Tabbagh A. 1999. The location of infinite electrodes in pole-pole electrical surveys: consequences for 2D imaging. *Journal of Applied Geophysics* 41, 313-333.
- Rubio A. 1947. Notas sobre geología de Panamá. Imprenta Nacional, Ministerio de Educación de Panamá. 47 págs.
- Samani N., Pasandi N. 2003. A Single Recovery Type curve from Theis' exact solution. *Ground Water* 41 (5), 602-607.
- Sandwell, D.T. & Smith, W.H.F., 1997a. Marine gravity anomaly from Geosat and ERS-1 satellite altimetry. *Jour. Geophys. Res.*, 102, 10039-10054.
- Sandwell, D.T. & Smith, W.H.F., 1997b. Exploring the ocean basins with satellite altimeter data. Disponible en Internet a través de la dirección siguiente: [www.ngdc.noaa.gov/mgg/bathymetry/predicted/explore.HTML](http://www.ngdc.noaa.gov/mgg/bathymetry/predicted/explore.HTML).
- Sasaky Y. 1989. Two-dimensional joint inversion of magnetotelluric and dipole-dipole resistivity data. *Geophysics* 54, 254-262.
- Sasaky Y. 1992. Resolution of resistivity tomography inferred from numerical simulation. *Geophysical Prospecting* 40 (4), 453-463.
- Scales J. A., Gersztenkorn A. 1988. Robust Methods in inverse theory. *Inverse Problems* 4, 1071-1091.
- Seaton W. J., Burbey T. J. 2000. Aquifer characterization in the Blue Ridge Physiographic Province using resistivity Profiling and Borehole Geophysics: Geologic Analysis. *Journal of environmental and Engineering Geophysics* 5 (3), 45-58.
- Seaton W. J., Burbey T. J. 2002. Evaluation of two-dimensional resistivity methods in a fractured crystalline-rock terrane. *Journal of Applied Geophysics* 51, 21-41.
- Sharma P. V. 1997 *Environmental and engineering geophysics*. Cambridge University press, Cambridge.



- Silver E. A., Reed D. L., Tagudin J. E., Heil D. J. 1990 Implications of the North and South Panamá thrust belts for the origin of the Panamá orocline. *Tectonics* 9, 261-281.
- Sjunnesson L., Svendenius M. 2004 Investigation of the groundwater situation in Pesé stream area, Panama. MSc Thesis, Royal Institute of Technology, Stockholm.
- Slichter L. B. 1933. The interpretation of resistivity method for horizontal structure. *Physics* 4, 307–322.
- Standard Methods for the Examination of Water and Wastewater. 2000. American Public Health Association/American Water Works Association/Water Environment Federation, Washington, DC.
- Stefanescu S., Schlumberger C., Schlumberger M. 1930. Sur la distribution électrique potentielle autour d'une prise de terre ponctuelle dans un terrain à couches horizontales, homogènes et isotropes. *Journal de Physique et le Radium* 1 (4), 132-140. DOI: 10.1051/jphysrad:0193000104013200
- Strahler, A. N. 1952. Dynamic Basis of Geomorphology. *Bulletin of the Geological Society of America* 63, 932-938.
- Talwani, M., Worzel, J.L., y Landisman, M. 1959. Rapid Gravity Computations for Two-Dimensional Bodies with application to the Mendocino Submarine Fracture Zone. *Journal of Geophysical Research*, 64, 49-61.
- Telford W. M., Geldart L. P., Sheriff R.E. 1994. *Applied Geophysics-Second edition*. Cambridge University Press, New York.
- Terry R. A. 1956. A geological reconnaissance of Panamá. *California Academic of Science Occasional Paper* 23. 91 págs.
- Theis C. V. 1935. The Relation between Lowering of the Piezometric Surface and the Rate and Duration of Discharge of a Well Using Groundwater Storage. *Transaction, American Geophysical Union* 16, 519-524.
- Tomascak P. B., Ryan J. G., Defant M. J. 2000. Lithium Isotope evidence for light element decoupling in the Panama Subarc mantle. *Geology* 28 (6), 507-510.
- Tournon J., Triboulet C., Azema J. 1989. Amphibolites from Panama: anticlockwise P-T paths from a Pre-upper Cretaceous metamorphic basement in Isthmian Central America. *Journal of metamorphic Geology* 7, 539-546.

- Trenkamp R., Kellog J., Freymueller J., Mora H. 2002. Wide plate margin deformation, southern Central America and Northwestern South America, CASA GPS observations. *Journal of South American Earth Science* 15, 157-171.
- Vallejos A., Pulido-Bosch A., Martín-Rosales W., Calvache M. L. 1997. Contribution of environmental isotopes to the knowledge of complex hydrologic systems. A case study: Sierra de Gador (SE Spain). *Earth Surface Processes and Landforms* 22, 1157–1168.
- Van Andel T. J., Heath G. R., Malfait B. T., Heinrichs D. F., Ewing J. I. 1971 Tectonics of the Panamá Basin, Eastern Equatorial Pacific. *Geological Society of America Bulletin* 82, 1489-1508.
- Vasicek J. M., Frey H.V., Thomas H. H. 1988. Satellite Magnetic Anomalies and the Middle America Trench. *Tectonophysics* 154, 19-24.
- Vergara Muñoz A. 1988. Tectonic Patterns of the Panama Block Deduced from Seismicity, Gravitational data and Earthquake Mechanisms: implications to the Seismic Hazard. *Tectonophysics* 154, 253-267.
- Vergara Muñoz A. 1989 Assessment of earthquake hazard in Panamá based on seismotectonic regionalization. *Natural Hazards* 2 (2), 115-31. DOI: 10.1007/BF00141386
- Vergara Muñoz A. 1990. Some aspects of the seismic hazard in Panama City . *Natural Hazards* 3 (3), 233-248. DOI:10.1007/BF00124579.
- Wadge G., Burke K. 1983. Neogene Caribbean plate rotation and associated Central American Tectonic evolution. *Tectonics* 2, 633-643.
- Wait J. R. 1982. *Geo-electromagnetism*. Academic Press, New York.
- Werner R., Hoernle K., van den Bogaard P., Ranero C., von Huene R., Korich D. 1999. Drowned 14-m.y.-old Galapagos Archipelago off the coast of Costa Rica; implications for tectonic and evolutionary models. *Geology* 27 (6), 499-502.
- White P. A., Scott D. M. 1988. Examination of sounding curve extrapolation use by the Offset Wenner System. *Geophysical Prospecting* 36 (2) 194-200.
- Willman M., Carrera J., Sánchez-Vila X., Vázquez-Suñe E. 2007. On the meaning of Transmissivity values obtained from recovery test. *Hydrogeology Journal* 15, 833-842.

- Wilson, D.S., 1996. Fastest known spreading on the Miocene Cocos – Pacific plate boundary. *Geophys. Res. Lett.* 23, 3003– 3006.
- Wilson, D.S., Hey, R.N., 1995. History of rift propagation and magnetization intensity for the Cocos–Nazca spreading center. *J. Geophys. Res.* 100, 10041– 10056.
- Wing R. S., MacDonald H. C. 1973. Radar Geology; Petroleum Exploration Technique, Eastern Panama and Northwestern Colombia. *American Association of Petroleum Geologist Bulletin* 57 (5), 825-840.
- Woodring W. P. 1966. The Panamá Land Bridge as sea Barrier. *Proceedings of the American Philosophical Society* 110 (6), 426-433.
- Yale, M.M., Sandwell, D.T. y Smith, W.H.F., 1995. Comparison o along-track resolution of stacked Geosat, ERS 1 and TOPEX satellite altimeters. *Jour. Geophys. Res.*, 100, B-8, 15117-15127.