

REVIEW

Open Access



Living together in biofilms: the microbial cell factory and its biotechnological implications

Mercedes Berlanga^{1*} and Ricardo Guerrero^{2,3}

Abstract

In nature, bacteria alternate between two modes of growth: a unicellular life phase, in which the cells are free-swimming (planktonic), and a multicellular life phase, in which the cells are sessile and live in a biofilm, that can be defined as surface-associated microbial heterogeneous structures comprising different populations of microorganisms surrounded by a self-produced matrix that allows their attachment to inert or organic surfaces. While a unicellular life phase allows for bacterial dispersion and the colonization of new environments, biofilms allow sessile cells to live in a coordinated, more permanent manner that favors their proliferation. In this alternating cycle, bacteria accomplish two physiological transitions via differential gene expression: (i) from planktonic cells to sessile cells within a biofilm, and (ii) from sessile to detached, newly planktonic cells. Many of the innate characteristics of biofilm bacteria are of biotechnological interest, such as the synthesis of valuable compounds (e.g., surfactants, ethanol) and the enhancement/processing of certain foods (e.g., table olives). Understanding the ecology of biofilm formation will allow the design of systems that will facilitate making products of interest and improve their yields.

Keywords: Biofilms as cell factories, Living together, Surfactants, Protein BIsA, Synthetic microbial communities

Background

Our perception of bacteria as unicellular life forms can be attributed to the axenic (“pure”) culture paradigm. While suspensions of bacteria growing in liquid medium have enabled the discovery of the main features of microbial physiology and genetics, in nature bacteria rarely grow as axenic planktonic cultures. Instead, they predominantly exist as communities of sessile cells that develop as biofilms [1–3]. The term “biofilm,” coined by Bill Costerton in 1978, refers to heterogeneous structures comprising different populations of microorganisms surrounded by a matrix (mostly of exopolysaccharides) that allows their attachment to inert (e.g., rocks, glass, plastic) or organic (e.g., skin, cuticle, mucosa) surfaces [4]. Although most natural or environmental biofilms are highly diverse multi microbial communities, the basic biology of biofilm development has been studied using single-species biofilms [5].

Biofilm formation is a nearly universal bacterial trait and has several general characteristics. Thus, biofilm development can be divided into three distinct stages: attachment, maturation (active sessile cells), and release [6, 7]. In relation with the properties of the surfaces, the factors of a surface that determine initial bacterial attachment are its charge, hydrophobicity, and roughness [8].

Biofilms do not grow forever: rather, the release of previously sessile cells is an intrinsic part of the surface-associated mode of life and it leads to the formation of new biofilms, often at distant sites [9]. Bacteria are released from biofilms via desorption, detachment, and dispersion. Desorption is the direct transfer of bacteria from the biofilm surface to the surrounding medium; it usually occurs in the early stages of biofilm development. Detachment involves external forces, such as abrasion, grazing, and erosion that are sufficient to disrupt the biofilm’s structure. In dispersion, regulatory systems enable physiological changes that facilitate the release of cells from the biofilm to the medium [9]. Thus, while desorption and attachment are passive forms of “escape,” dispersion is an active process [9].

*Correspondence: mberlanga@ub.edu

¹ Section Microbiology, Department of Biology, Health and Environment, Faculty of Pharmacy and Food Sciences, University of Barcelona, Av. Joan XXIII, s/n, 08028 Barcelona, Spain

Full list of author information is available at the end of the article



Biofilms offer bacteria several ecological and physiological advantages: Biofilms constitute a protective physical barrier to nonspecific and specific host defenses during infection; they confer tolerance to antimicrobial agents (disinfectants and antibiotics) by reducing diffusion of those toxic compounds; and they effectively reduce the grazing by protozoa [10–13]. Those protective benefits of biofilms depend on their inherent structure (matrix), and on the gene expression patterns of sessile cells [12, 14].

The structure and composition (up to 97 % water) of the biofilm matrix protect cells from desiccation [15]. By providing a stable physical environment for cell to cell contact (conjugation) or the incorporation of external DNA (transformation), biofilms facilitate horizontal gene transfer among the large number of individuals residing within them [12, 16–18].

The benefits of living together

The structural integrity of a biofilm depends upon the extracellular matrix (ECM) produced by its constituent microorganisms. The ECM of bacterial biofilms is a complex mixture of exopolysaccharides, nucleic acids, proteins, and other compounds. Indeed the composition of the ECM may be as diverse as that of the biofilms themselves, and it contributes significantly to the organization of the community [3, 19]. Microorganisms in biofilms are metabolically and functionally integrated consortia that can adopt specific spatial configurations; the presence and localization of the different cell types is therefore dynamic [20]. The consumption by these different cell types of resources (e.g., H_2 , H_2S , NH_3 , several organic compounds), electron acceptors (such as O_2 , SO_4^{2-} , NO_3^- , CO_2 , etc.), waste products, and other substances generated by microorganisms in the biofilm establishes the driving forces that lead to the formation of the chemical gradients that allow molecular diffusion [21–23].

Microbial consortia have played important roles throughout the history of life on Earth, from the microbial mats (a type of biofilm) that were probably the first ecosystems in the early Archean (about 3850–3500 million years ago), to the complex microbiota of the intestinal tract of different animals [21, 24]. Cell to cell communication is ubiquitously employed by individual microorganisms as well as microbial communities to coordinate different physiological processes and to initiate cooperative activities that depend on the production and secretion of small diffusible auto inducers (quorum sensing signals), such as acyl-homoserine lactones, and oligopeptides [25]. Interactions mediated by inducers form the basis of quorum-sensing, which governs many important physiological processes, such as biofilm development (attachment-maturation-detachment), biodegradation of pollutants, changes in virulence, and

regulation of metabolic pathways (e.g., antibiotic production, exopolysaccharide secretion, and biosurfactant biosynthesis) [25, 26].

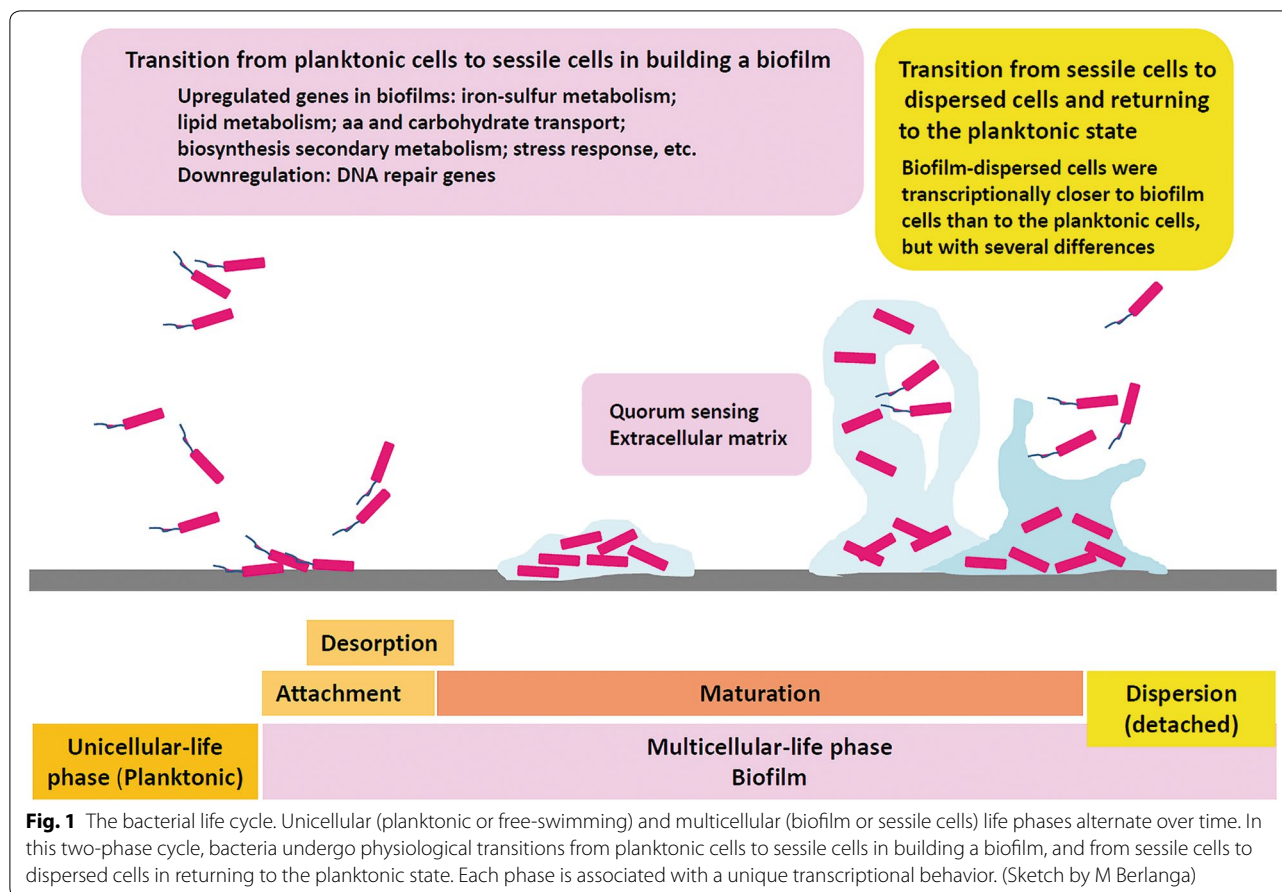
From the human perspective, microbial biofilms can be detrimental or beneficial. Biofilms hinder industrial processes by causing biofouling, reducing heat transfer, and increasing corrosion. In addition, because they often contain pathogenic and spoilage bacteria resistant to cleaning and disinfecting agents, they pose a risk to public health and compromise the quality of food and non-food products [27, 28]. In the medical setting, biofilms cause infections, especially within implants, in the urinary tract and periodontal tissue, and may complicate diseases, such as cystic fibrosis [29, 30]. The difficulty in eradicating these infections reflects the antimicrobial tolerance of bacteria protected within biofilms. In fact, the antimicrobial resistance of biofilm bacteria is 100- to 1000-fold higher than that of planktonic cells [31].

In this review, however, we focus on the beneficial applications of biofilms in the biotechnological production of organic compounds and the modification of several foods. We also consider the possible use of artificially engineered biofilms with increased capabilities designed to yield value-added products.

Phenotypic transition of free-living cells to attached cells and to detached cells

The bacterial life cycle can be divided into two distinct life phases: unicellular (planktonic) and multicellular (biofilm or sessile cells) [22]. Alternation between the two phases requires the transition from planktonic cells to sessile cells to initiate biofilm formation and from sessile cells to detached cells to allow a return to the planktonic state [32] (Fig. 1).

Comparisons of the different whole transcriptomes and/or metabolomes obtained in *Klebsiella* [33], *Acinetobacter* [34], *Haemophilus* [35], *Listeria* [36], and *Streptococcus* [37] have shown that each life phase is associated with a unique transcriptional behavior. The differences in gene expression between planktonic cells and biofilm communities include the up-regulation and down-regulation of distinct sets of genes [38]. For example, genes involved in iron-sulfur metabolism, lipid metabolism, amino acid and carbohydrate transport, biosynthesis of secondary metabolites, and stress response are up-regulated during biofilm formation [33, 38], as are genes encoding efflux system components [34]. In the case of iron metabolism, the iron concentration in the medium is an important environmental signal that induces the expression of adhesion factors, which are critical to the attachment stage of biofilm development. Accordingly, several genes involved in iron acquisition are over-expressed in the biofilm compared to planktonic cells.



The down-regulation of DNA repair genes in biofilm cells indicates that the frequency of spontaneous mutations, and therefore of novel genetic traits, is elevated within the biofilm [38].

Cells dispersed from biofilms are transcriptionally closer to their parent cells than to planktonic cells and display specific phenotypes with a high adaptive ability allowing the colonization of new environments [33]. However, biofilm cells and newly dispersed cells also differ, for example, in their relative expression of genes involved in the SOS response, which are overexpressed in cells of the planktonic growth mode [33, 38].

Using the unique features of biofilms in biotechnological applications

As noted above, the ECM of bacterial biofilms is a complex mixture of exopolysaccharides, nucleic acids, proteins and other compounds that mediate surface adhesion, cell to cell communication, self-organization within the biofilm, structural integrity, nutrient acquisition, and the antibiotic resistance of the bacterial community. Some of the compounds present in the biofilm ECM may be of biotechnological utility for, among

others, the cosmetics, food, and pharmaceutical industries. In the following text we examine the potential applications of biofilm surfactants (rhamnolipids) and the biofilm protein BslA.

Microbial surfactants are surface-active metabolites that reduce surface and interfacial tension [39]. They are produced by microorganisms growing on a variety of substrates and have a diverse group of chemical structures, including glycolipids, lipopeptides and lipoproteins, fatty acids, neutral lipids, and phospholipids, in the form of polymers and particles [40]. Surfactants participate in several key biological functions in different microorganisms, such as substrate uptake [41], modification of the microbial cell surface [41], cell motility [41], and biofilm development [42–45].

Among the better-studied biosurfactants are rhamnolipids, produced mainly by *Pseudomonas aeruginosa*. In this species, rhamnolipids play an essential role in the different stages of biofilm development and therefore in the establishment of the biofilm phase of life [46]. Rhamnolipids are extracellular secondary metabolites with surface-active properties under the control of two inter-related quorum-sensing systems: *las* and *rhl* [47]. Low

concentrations of rhamnolipids alter cell-surface properties by increasing the hydrophobicity of the cell, which increases its surface affinity and therefore its initial surface adherence [40, 48, 49]. However, the overproduction of rhamnolipids inhibits biofilm formation, blocks cellular aggregation, and diminishes secondary colonization onto preformed biofilms by planktonic bacteria [43]. After adhesion, low concentrations of rhamnolipids are sufficient to facilitate the aggregation of *P. aeruginosa* and therefore the initial formation of a microcolony [50]. Later on, in mushroom-shaped mature biofilms, rhamnolipid biosurfactants maintain fluid channels in an open state and thereby support the biofilm itself, by ensuring the flow of nutrients and oxygen into the community and the efflux of waste products [43]. Davey et al. [43] reported that mutants defective in rhamnolipid production were unable to maintain water channels. Finally, the active process of dispersion, in which cell detachment occurs during the late stages of biofilm formation, is also actively mediated by rhamnolipids [51].

Biosurfactants have been the subject of increasing attention because of their lower toxicity and higher biodegradability compared to their synthetic chemical counterparts [47, 52]. Despite their many commercial applications (e.g., as agents for emulsion, wetting, foaming, phase dispersion), their large-scale production has not been possible because of the low yields and high production costs [39]. Better knowledge of the genetics and regulatory pathways underlying surfactant expression is needed to improve the production of biosurfactants [47].

In the laboratory, *Bacillus subtilis* forms complex colonies on the surface of agar plates and floating biofilms (pellicles) at the air/liquid interface [53, 54]. The persistent resistance to liquid wetting and gas penetration of *B. subtilis* biofilms is probably due to the presence of the surface-active protein BslA in the biofilm matrix. In vivo, amphiphilic BslA localizes to the biofilm surface [55]. BslA is a member of the family of hydrophobin proteins and its core is structurally similar to that of proteins of the immunoglobulin superfamily [53] (Fig. 2). BslA is important for proper biofilm development, but unlike exopolysaccharides and the amyloid protein TasA it is not directly involved in cell cluster formation [56]. Moreover, it is synthesized only after the production of exopolysaccharide and amyloid fibers. The disruption of BslA production results in the loss of surface repellency and alters the surface microstructure of the biofilm [56].

Purified BslA is soluble in aqueous solution, but in air/water, oil/water or solid interfaces it forms a viscoelastic interfacial proteinaceous film [57]. Hydrophobins such as BslA may have applications in the food or cosmetic industry, as stabilizers. For example, ice cream is a mixture of air, fat, milk proteins, sugar, and water. During ice

cream production, BslA protein can be used to combine the air, fat, and water, thus yielding a stable mixture and allowing ice cream to stay frozen for longer periods of time, even in hot weather. BslA also retards the growth of ice crystals, ensuring that a smooth texture is maintained [58].

Biofilms as cell factories

Biofilms could also be used for the production of various chemicals, whether by fermentation (ethanol, butanol, lactic acid, and succinic acid) or during wastewater treatment or bioremediation. Thus far, the biofilms used to obtain industrial products are typically those of single species, which allows the controlled growth conditions needed to maximize the production of the desired compound [59–61].

In biofilms intended for industrial applications (biofilm reactors), microbial cells are fixed on different supports by adsorption, entrapment, or covalent bond formation. Adsorption uses the natural ability of bacterial cells to adhere to a support (such as charcoal, resin, vermiculite, sand particles, polypropylene). Entrapment consists of active cell immobilization in a polymer matrix (such as agar, alginate, polyacrylamide, chitosan, gelatin, collagen), whereas a prerequisite for covalent binding to surfaces is the presence of coupling agents that promote adhesion to the support [61]. Generally, the most commonly used biofilm bioreactors are fixed by adsorption, as is the case in continuous stirred tank reactors, packed bed reactors, fluidized bed reactors, and airlift reactors [59, 62–64]. In all of these, an appropriate reactor design and the correct solid support are essential to achieve homogeneous distribution of the biofilm and therefore enhance a stable production in the biofilm reactor [61]. Table 1 compares the production by adsorption-fixed biofilm reactors vs. planktonically growing cells of several compounds and shows the higher production rates of biofilms reactors. Indeed, the advantages of biofilm reactors include their ability to retain 5 to 10 times more biomass per unit volume of reactor, thereby increasing production rates, reducing the risk of cell washout at high dilution rates during continuous fermentation, and eliminating the need for re-inoculation during repeated-batch fermentation [59, 61]. Additionally, biofilms provide a stable environment for the microorganisms enclosed within them, and their ECMs confer a higher resistance to extreme conditions of pH and temperature and the presence of toxic substances [61, 62].

In contrast to natural or laboratory-produced biofilms (obtained by adhesion to carrier surfaces) or reactor biofilms (obtained by adsorption to a support), cells immobilized or entrapped, e.g., on alginate or agar, do not undergo an adhesion step. Consequently, the changes in

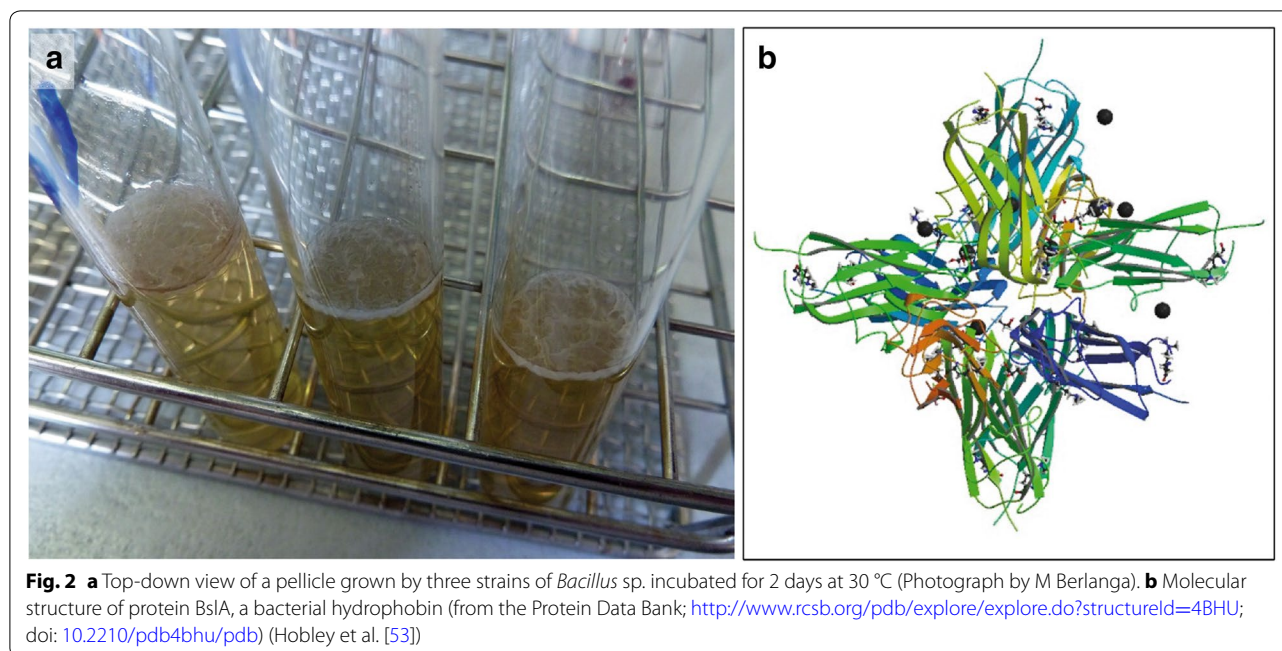


Table 1 Comparison of the synthesis of products by biofilm reactors (adhesion to different supports) vs. planktonically growing cells

| Species | Product synthesized | Productivity of the biofilm (g/l/h) | Productivity of planktonically growing cells (g/l/h) | Reference |
|------------------------------------|---------------------|-------------------------------------|--|-----------|
| <i>Zymomonas mobilis</i> | Ethanol | 105 | <4 | [113] |
| <i>Zymomonas mobilis</i> | Ethanol | 536 | 5 | [114] |
| <i>Zymomonas mobilis</i> | Ethanol | 13.40 | 0.43 | [115] |
| <i>Saccharomyces cerevisiae</i> | Ethanol | 76 | 5 | [114] |
| <i>Clostridium acetobutylicum</i> | Butanol | 1.53 | ~0.22 | [116] |
| <i>Actinobacillus succinogenes</i> | Succinic acid | 8.8 | 7.0 | [117] |

gene expression that normally follow adhesion are absent [33, 65].

The immobilization of cells in alginate beads, could be used as a model for artificial biofilms, for several reasons: (i) protein expression: expression patterns in artificially immobilized microorganisms support the existence of a specific behavior in immobilized cells, as it is observed on “authentic” biofilms [66, 67]. (ii) Porous matrix and gradient formation: cell distribution in the beads depends on bead formation, but generally there was a greater presence of cells on the surfaces of the alginate beads than in their cores. The porosity of the beads is related to the type and concentration of the alginate. Therefore, cells located at the center of the beads may face aeration and nutritional limitations [68]. (iii) Detached cells: expanding colonies near the surface of the gel will eventually touch the gel surface and pieces of biomass could be released.

In beads, it seems that dispersed cells are an eruption of entire microcolonies at once into the surrounding medium [66, 69–71] (Fig. 3). (iv) Phenotypical characteristics of the detached cells: Detached or dispersed cells from “authentic” biofilm exhibited an enhanced ability to adhere to endothelial cells [72] and other surfaces [73], similarly as it has been observed in dispersed cells from the alginate beads [74]. In *Halomonas venusta*, the surface properties (Lewis-acid or electron acceptor–donator character of the cells and their hydrophobicity) of the dispersed cells clearly differ from those of planktonic cells, and in consequence they may explain their better adhesion on polystyrene [74].

Cells immobilized on alginate beads have been used in the degradation and biotransformation of pollutants [75], the preservation of cell viability [76], and the production of enzymes [77, 78], probiotics [79] and other value

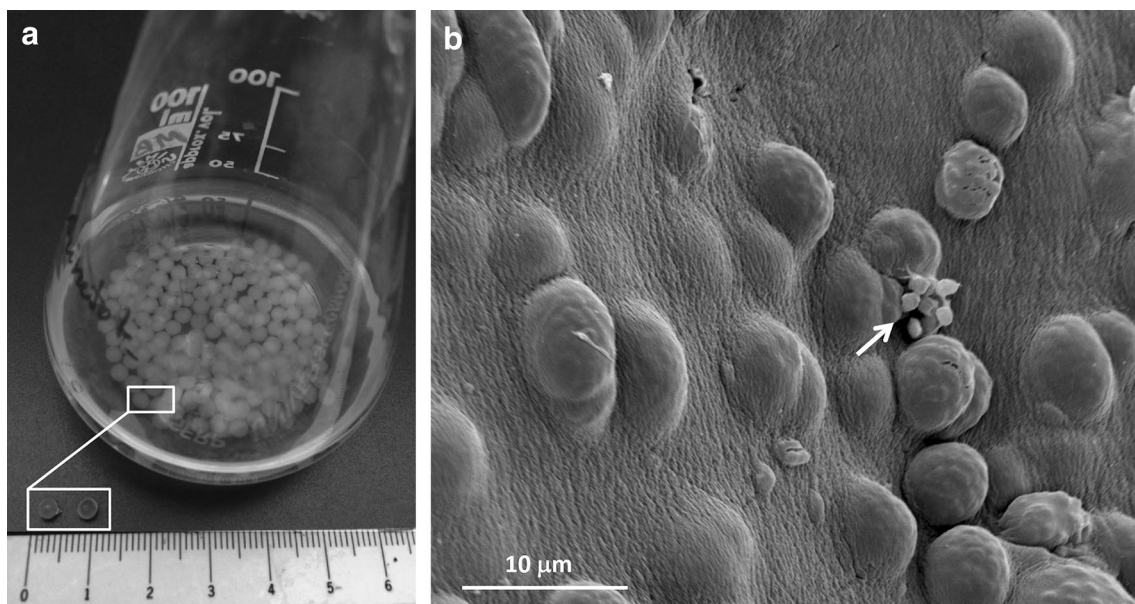


Fig. 3 **a** Alginate beads (2 mm in diameter, see highlighted rectangle) in an erlenmeyer flask containing 50 ml of tryptic soy broth diluted 30-fold. (Photograph by M Berlanga) **b** Scanning electron micrograph of *Halomonas* immobilized cells after 24 h of incubation. (From [74], with permission). Arrow individual cell protruding from the bumps produced by the presence of microcolonies on the surface of the bead and about to detach

products such as poly- β -hydroxyalkanoates (PHA) [69]. Dispersed cells of *Halomonas* growing in alginate beads which produces poly- β -hydroxyalkanoates (PHA), accumulate higher concentrations of these compounds than their counterparts growing planktonically, in the same unbalanced stress-inducing culture medium [69]. As established cell factories, biofilm-detached cells could be a better alternative for PHA production than planktonic cells.

Biofilms in food: the case study of table olives

Olives are a fruit that contains a bitter component (oleuropein), sugar (2.6–6.0 %), and high oil content (12–30 %), in proportions that change according to the degree of maturity and variety of the olive. Because olives are not palatable directly after their harvest, they must be treated before they can be sold to consumers. Treatments to obtain table olives include alkaline processing of green olives (“Spanish style”), alkaline oxidation of ripe olives (“Californian style”), and direct immersion in brine (“natural olives”) [80]. All of these treatments include immersion of the olives in brine (7–10 % NaCl solution) that is gradually enriched with nutrients from the olive mesocarp, which serves as the substrate for microorganisms to initiate fermentation. The final product has improved sensory characteristics and can then be marketed [81].

Fermentation depends on the activities of a mixed community of microorganisms that form a biofilm on the skin of the olives [80]. Depending on the initial conditions,

lactic acid bacteria (LAB) grow spontaneously on treated olives, although they can be substituted by yeasts, such as *Candida*, *Pichia*, and *Saccharomyces* [80, 82], in truly natural olives. The main microbial genus isolated from table olives is *Lactobacillus*. Other, albeit quantitatively less important genera of LAB isolated from olives are *Enterococcus*, *Pediococcus*, *Leuconostoc*, and *Lactococcus* [81]. LAB metabolizes sugars, mainly converting them to lactic acid. They play key roles in the preservation of many foods and contribute to improving sensory properties such as texture and flavor [83].

During the fermentation of “Spanish-style” green olives, LAB and yeasts form an authentic biofilm with an exopolysaccharide matrix [84, 85]. In a scanning electron microscopy study, Grounta and Panagou [86] showed the formation of biofilms on oxidized Greek black olives, while Benítez-Cabello et al. [80] described the formation of microbial biofilms on the epidermis of directly brined “natural” green olives.

The fermentation ecosystem of truly natural olives, like that of treated olives, consists of a complex mixture of gram-negative bacteria, LAB, and yeasts [87]. Gram-negative bacteria are very important during the initial phase of the process and reach a maximum abundance on the second day after the olives have been placed in brine. Thereafter, the abundances of LAB or yeasts, or both, depending on the nature of the fermentation, gradually increase, replacing the gram-negative bacteria and consuming the nutrients in the medium while excreting

lactic or citric acids and volatile compounds [81, 87]. Among the latter, the most abundant is ethanol, followed by methanol, whereas propanol, 2-butanol, ethyl acetate, acetaldehyde, and dimethyl sulfide are detected in lower amounts [88]. Ethanol is the precursor of ethyl esters, with ethyl acetate as the most important with respect to the palatability of olives. Both propanol, which originates mainly from yeast metabolism, and ethanol contribute to the secondary odor of fermented olives [89]. Thus, regardless of the olive processing method, biofilm-forming microorganisms determine the quality, safety, flavor, and taste of the final product. Other examples of popular foods that depend on the microbial activities of complex biofilms on the surface of the fruit are cocoa [90] and coffee [91].

Looking into the future: designing synthetic microbial communities for biotechnological processes

The metabolic capabilities of microorganisms have been the basis for many major biotechnological advances, most of which have made use of genetically modified single microbial strains [92, 93]. Newly acquired properties and therefore the biosynthesis of compounds of interest may depend on interference with innate metabolism, genetic instability, and the production of undesirable side-products [93, 94]. However, the number of new properties that can be incorporated into a single microorganism is limited [92]. In natural communities, microbial populations interact constantly with each other, establishing complex ecological webs [95]. The wide-ranging metabolic plasticity of microbial communities includes the efficient catalysis of many processes, by combining the metabolic pathways and enzymatic systems of the different resident organisms [24, 96].

Synthetic biology is an emerging field of research in which engineering strategies are used to program biological systems. It is based on the systematic characterization of the genetic and metabolic pathways present in microbial consortia and an understanding of the molecular mechanisms underlying their interactions. In the design of engineered bacterial consortia, three fundamental aspects must be taken into account: (i) the type of ecological interaction (e.g., commensalism, mutualism, competition, predation, or parasitism) to be established [92, 93, 96]; and (ii) the interactions between two or more microbial strains that are needed to stabilize and optimize the synthetic consortia for bioprocessing applications [94, 97–99]. Stabilization and functionality may be related distribution of microbial strains inside the biofilm [98, 99].

Cross-feeding is a common element in commensalistic and mutualistic interactions [93]. In a commensalistic

interaction, organism A benefits from the interaction, for example, by scavenging several products released by organism B, which is neither positively nor negatively affected by this activity. In a mutualistic interaction, organisms A and B benefit, for example, by exchanging metabolites or by removing one another's inhibitory substances. Axenic cultivation disrupts these mutualistic interactions and may be one of the reasons for the low cultivation efficiency of environmental microorganisms [93]. By contrast, cultivation strategies that preserve microbial interactions have led to much higher cultivation efficiencies [100, 101]. However, microorganisms also compete with their neighbors for space and resources. In competition, as in predator–prey or parasitic interactions, only one partner benefits, while the other is adversely affected. Competition is related to the rapid uptake of nutrients and conversion into biomass for one member of the competing populations, with the balance depending on the environmental conditions. Amensalism is a special type of competitive interaction between two populations in which one population adversely affects the other without being affected itself. For example, population A can excrete several compounds into the surrounding environment, such as acids, alcohols, bacteriocins and antibiotics, that are effective inhibitors of the growth of population B [102].

A challenge in synthetic biology is to coordinate several populations to produce a value-added product at higher yield [94, 99]. Consortia are frequently unstable basically because co-evolution of constituent members may affect their interactions, which are the basis of collective metabolic functionality. This realization shows the necessity to better identify the key components that influence the stable coexistence of microorganisms. Christian et al. [103] used the KEGG database and extracted 447 organism-specific metabolic-networks and then performed pairwise comparisons by integrating metabolic networks. The work simulates the metabolic cooperation of two organisms and at different conditions to prove their stability and efficiency. Others authors also modeled other ecosystem based also on metabolic networks [96, 104]. But, once an artificial community has been created or modelled, it needs to be combined with experimental work. Such models can then be further refined through experimental data by modifying the parameters of the system for the optimum functioning. Different media formulations (based on carbon, nitrogen, sulfur and phosphorus) can affect how two microbes will ultimately interact [105]. Microorganisms can even be genetically manipulated to achieve new interaction types [106, 107].

Several synthetic communities have been used for the synthesis of different products in the industry. Industrially ethanol biosynthesis is produced by the fermentation of

glucose or sucrose from sugar cane or beets. But alternative sources of sugar have been investigated, such as lignocellulosic substrates. Co-cultures of *Zymomonas mobilis* and *Candida tropicalis* were able to transform enzymatically hydrolyzed lignocellulosic biomass into ethanol with a yield of 97.7 % [108]. Synthetic microbial communities consisting of *Ketogulonicigenium vulgare* and *Bacillus megaterium* have been used in industry to produce 2-keto-gulonic acid (2-KGA), the precursor of vitamin C [109]. In this process, *K. vulgare* is the 2-KGA producing strain and *B. megaterium* acts as a companion strain that secretes some metabolites (such as L-glycine, L-proline, L-threonine, and L-isoleucine) to stimulate the growth of *K. vulgare* and, thus, to enhance 2-KGA production [110].

The success achieved thus far with synthetic microbial communities has demonstrated that genetic circuitries can be engineered to construct efficient cellular factories [92]. Xia et al. [111] described a consortium of *Escherichia coli* strains that could simultaneously utilize glucose, xylose, arabinose, and acetate. However, the efficient microbial utilization of lignocellulosic hydrolysates has remained challenging because in addition to multiple sugars lignocellulose contains growth inhibitors, such as acetic acid (or acetate). Nonetheless, in an engineered yeast consortium the utilization of cellulosic substrates was exploited to increase the production of ethanol [112].

We conclude this review by emphasizing the importance of detailed studies of biofilm ecology, such as their populations, the interactions among these populations, their functionality, and community and ECM structure, to achieve a complete understanding of microbial systems. This, in turn, will allow their successful application to obtain value-added products. Indeed, a biofilm is much more than the sum of its integrative parts.

Authors' contributions

MB and RG wrote the paper. Both authors read and approved the final manuscript.

Author details

¹ Section Microbiology, Department of Biology, Health and Environment, Faculty of Pharmacy and Food Sciences, University of Barcelona, Av. Joan XXIII, s/n, 08028 Barcelona, Spain. ² Laboratory of Molecular Microbiology and Antimicrobials, Department of Pathology and Experimental Therapeutics, Faculty of Medicine, University of Barcelona-IDIBELL, Barcelona, Spain. ³ Barcelona Knowledge Hub, Academia Europaea, Barcelona, Spain.

Acknowledgements

Not applicable.

Competing interests

Both authors declare that they have no competing interests.

Availability of data and materials

Data sharing not applicable to this article as no datasets were generated.

Funding

This work was supported by Grant CGL2009-08922 (Spanish Ministry of Science and Technology) to RG.

Received: 19 August 2016 Accepted: 23 September 2016

Published online: 01 October 2016

References

- Kolter R. Biofilms in lab and nature: a molecular geneticist's voyage to microbial ecology. *Int Microbiol*. 2010;13:1–7.
- Sachs JL, Hollowed AC. The origins of cooperative bacterial communities. *mBio*. 2012. doi:10.1128/mBio.00099-12.
- Hobley L, Harkins C, MacPhee CE, Stanley-Wall NR. Giving structure to the biofilm matrix: an overview of individual strategies and emerging common themes. *FEMS Microbiol Rev*. 2015. doi:10.1093/femsre/fuv015.
- Costerton JW, Lewandowski Z, Caldwell DE, Korber DR, Lappin-Scott HM. Microbial biofilms. *Annu Rev Microbiol*. 1995. doi:10.1146/annurev.mi.49.100195.003431.
- Vlamakis H, Chai Y, Beauregard P, Losick R, Kolter R. Sticking together: building a biofilm the *Bacillus subtilis* way. *Nat Rev Microbiol*. 2013. doi:10.1038/nrmicro2960.
- Rollet C, Gal L, Guzzo J. Biofilm-detached cells, a transition from a sessile to planktonic phenotype: a comparative study of adhesion and physiological characteristics in *Pseudomonas aeruginosa*. *FEMS Microbiol Lett*. 2009. doi:10.1111/j.1574-6968.2008.01415.
- Peter H, Ylla I, Gudasz C, Romani AM, Sabater S, Tranvik LJ. Multifunctionality and diversity in bacterial biofilms. *PLoS ONE*. 2011. doi:10.1371/journal.pone.0023225.
- Palmer J, Flint S, Brooks J. Bacterial cell attachment, the beginning of a biofilm. *J Ind Microbiol Biotechnol*. 2009. doi:10.1007/s10295-007-0234-4.
- Petrova OE, Sauer K. Escaping the biofilm in more than one way: desorption, detachment or dispersion. *Curr Opin Microbiol*. 2016. doi:10.1016/j.mib.2016.01.004.
- Matz C, Kjelleberg S. Off the hook—how bacteria survive protozoan grazing. *Trends Microbiol*. 2005;13:302–7.
- Lee KWK, Periasamy S, Mukherjee M, Xie C, Kjelleberg S, Rice SA. Biofilm development and enhanced stress resistance of a model, mixed-species community biofilm. *ISME J*. 2014. doi:10.1038/ismej.2013.194.
- Burrølle M, Ren D, Bjarnsholt T, Sørensen SJ. Interactions in multi-species biofilms: do they actually matter? *Trends Microbiol*. 2014. doi:10.1016/j.tim.2013.12.004.
- Young KD. The selective value of bacterial shape. *Microbiol Mol Biol Rev*. 2006;70:660–703.
- Martin M, Hölscher T, Dragos A, Cooper VS, Kovács AT. Laboratory evolution of microbial interactions in bacterial biofilms. *J Bacteriol*. 2016. doi:10.1128/JB.01018-15.
- Flemming HC, Wingender J. The biofilm matrix. *Nat Rev Microbiol*. 2010. doi:10.1038/nrmicro2415.
- Merod RT, Wuertz S. Extracellular polymeric substance architecture influences natural genetic transformation of *Acinetobacter baylyi* in biofilms. *Appl Environ Microbiol*. 2014;80:7752–7.
- Meerveen E, De Weirtdt R, Van Coillie E, Devlieghere F, Hernan L, Boon N. Biofilm models for the food industry: hot spots for plasmid transfer? *Pathog Dis*. 2014;70:332–8.
- Kouzel N, Oldewurtel ER, Maier B. Gene transfer efficiency in gonococcal biofilms: role of biofilm age, architecture, and pilin antigenic variation. *J Bacteriol*. 2015;197:2422–31.
- Turnbull L, Toyofuku M, Hynen AL, Kurosawa M, Pessi G, Petty NK, Osvath SR, Cárcamo-Oyarce G, et al. Explosive cell lysis as a mechanism for the biogenesis of bacterial membrane vesicles and biofilms. *Nat Commun*. 2016. doi:10.1038/ncomms11220.
- Guerrero R, Berlanga M. From the cell to the ecosystem: the physiological evolution of symbiosis. *Evol Biol*. 2015. doi:10.1007/s11692-015-9360-5.
- Guerrero R, Piqueras M, Berlanga M. Microbial mats and the search for minimal ecosystems. *Int Microbiol*. 2002;5:177–88.
- Van Gestel J, Vlamakis H, Kolter R. Division of labor in biofilms: the ecology of cell differentiation. *Microbiol Spectr*. 2015. doi:10.1128/microbiolspec.MB-0002-2014.

23. Stewart PS, Franklin MJ. Physiological heterogeneity in biofilms. *Nat Rev Microbiol*. 2008;6:199–210. doi:[10.1038/nrmicro1838](https://doi.org/10.1038/nrmicro1838).
24. Berlanga M, Guerrero R. The holobiont concept: the case of xylophagous termites and cockroaches. *Symbiosis*. 2016. doi:[10.1007/s13199-016-0388-9](https://doi.org/10.1007/s13199-016-0388-9).
25. Zhang W, Li C. Exploring quorum sensing interfering strategies in Gram-negative bacteria for the enhancement of environmental applications. *Front Microbiol*. 2016. doi:[10.3389/fmicb.2015.01535](https://doi.org/10.3389/fmicb.2015.01535).
26. Grandclément C, Tannières M, Moréra S, Dessaux Y, Faure D. Quorum sensing quenching: role in nature and applied developments. *FEMS Microbiol Rev*. 2016. doi:[10.1093/femsre/fuv038](https://doi.org/10.1093/femsre/fuv038).
27. Araújo PA, Mergulhão F, Melo L, Simões M. The ability of an antimicrobial agent to penetrate a biofilm is not correlated with its killing or removal efficiency. *Biofouling*. 2014. doi:[10.1080/08927014.2014.904294](https://doi.org/10.1080/08927014.2014.904294).
28. Bridier A, Sanchez-Vizuete P, Guilbaud M, Piard J-C, Naïtali M, Briandet R. Biofilm-associated persistence of food-borne pathogens. *Food Microbiol*. 2014. doi:[10.1016/j.fm.2014.04.015](https://doi.org/10.1016/j.fm.2014.04.015).
29. Bryers JD. Medial biofilms. *Biotechnol Bioeng*. 2008;100:1–18. doi:[10.1002/bit.21838](https://doi.org/10.1002/bit.21838).
30. Lebeaux D, Chauhan A, Rendueles O, Beloin C. From in vitro to in vivo models of bacterial biofilm-related infections. *Pathogens*. 2013. doi:[10.3390/pathogens2020288](https://doi.org/10.3390/pathogens2020288).
31. Olsen I. Biofilm-specific antibiotic tolerance and resistance. *Eur J Clin Microbiol Infect Dis*. 2015. doi:[10.1007/s10096-015-2323](https://doi.org/10.1007/s10096-015-2323).
32. McDougald D, Rice SA, Barraud N, Steinberg PD, Kjelleberg S. Should we stay or should we go: mechanisms and ecological consequences for biofilm dispersal. *Nat Rev Microbiol*. 2012;10:39–50.
33. Guilhen C, Charbonnel N, Parisot N, Gueguen N, Iltis A, Forestier C, Balestrino D. Transcriptional profiling of *Klebsiella pneumoniae* defines signatures for planktonic, sessile and biofilm-dispersed cells. *BMC Genom*. 2016. doi:[10.1186/s12864-016-2557-x](https://doi.org/10.1186/s12864-016-2557-x).
34. Rumbo-Feal S, Gómez MJ, Gayoso C, Álvarez-Fraga L, Cabral MP, Aransay AM, Rodríguez-Ezpeleta N, Fullaondo A, et al. Whole transcriptome analysis of *Acinetobacter baumannii* assessed by RNA-sequencing reveals different mRNA expression profiles in Biofilm compared to planktonic cells. *PLoS ONE*. 2013. doi:[10.1371/journal.pone.0072968](https://doi.org/10.1371/journal.pone.0072968).
35. Post DMB, Held JM, Ketterer MR, Philips NJ, Sahu A, Apicella MA, Gibson BW. Comparative analyses of proteins from *Haemophilus influenzae* biofilm and planktonic populations using metabolic labeling and mass spectrometry. *BMC Microbiol*. 2014. doi:[10.1186/s12866-014-0329-9](https://doi.org/10.1186/s12866-014-0329-9).
36. European Listeria Genome Consortium, Trémoulet F, Duché O, Namane A, Martinie B, Labadie JC. Comparison of protein patterns of *Listeria monocytogenes* grown in biofilm or in planktonic mode by proteomic analysis. *FEMS Microbiol Lett*. 2002;210:25–31.
37. Liu J, Ling J-Q, Wu CD. Physiological properties of *Streptococcus mutants* UA159 biofilm-detached cells. *FEMS Microbiol Lett*. 2013. doi:[10.1111/1574-6968.12066](https://doi.org/10.1111/1574-6968.12066).
38. Nakamura Y, Yamamoto N, Kino Y, Yamamoto N, Kamai S, Mori H, Kurokawa K, Nakashima N. Establishment of a multi-species biofilm model and metatranscriptomic analysis of biofilm and planktonic cell communities. *Appl Microbiol Biotechnol*. 2016. doi:[10.1007/s00253-016-7532-6](https://doi.org/10.1007/s00253-016-7532-6).
39. Mukherjee S, Das P, Sen R. Towards commercial production of microbial surfactants. *Trends Biotechnol*. 2006. doi:[10.1016/j.tibtech.2006.09.005](https://doi.org/10.1016/j.tibtech.2006.09.005).
40. Nickzad A, Déziel E. The involvement of rhamnolipids in microbial cell adhesion and biofilm development—an approach for control? *Lett Appl Microbiol*. 2014. doi:[10.1111/lam.12211](https://doi.org/10.1111/lam.12211).
41. Chrzanowski Ł, Ławniczak Ł, Czaczyk K. Why do microorganisms produce rhamnolipids? *World J Microbiol Biotechnol*. 2012;28:401–19.
42. Mireles JR, Toguchi A, Harshey RM. *Salmonella enterica* serovar typhimurium swarming mutants with altered biofilm-forming abilities: surfactin inhibits biofilm formation. *J Bacteriol*. 2001;183:5848–54.
43. Davey ME, Caiazza NC, O'Toole GA. Rhamnolipid surfactant production affects biofilm architecture in *Pseudomonas aeruginosa* PAO1. *J Bacteriol*. 2003;185:1027–36.
44. Kearns DB. A field guide to bacterial swarming motility. *Nat Rev Microbiol*. 2010;8:634–44.
45. Glick R, Gilmour C, Tremblay J, Satanower S, Avidan O, Déziel E, Greenberg EP, Poole K, et al. Increase in rhamnolipid synthesis under iron-limiting conditions influences surface motility and biofilm formation in *Pseudomonas aeruginosa*. *J Bacteriol*. 2010. doi:[10.1128/JB.01601-09](https://doi.org/10.1128/JB.01601-09).
46. Lequette Y, Greenberg EP. Timing and localization of rhamnolipid synthesis gene expression in *Pseudomonas aeruginosa* biofilms. *J Bacteriol*. 2005;187:37–44.
47. Dusane DH, Zinjarde SS, Venugopalan VP, Mclean RJ, Weber MM, Rahman PKSM. Quorum sensing: implications on rhamnolipid biosurfactant production. *Biotechnol Gen Eng Rev*. 2010;27:159–84.
48. Al-Tahhan RA, Sandrin TR, Bodour AA, Maier RM. Rhamnolipid-induced removal of lipopolysaccharide from *Pseudomonas aeruginosa*: effect on cell surface properties and interaction with hydrophobic substrates. *Appl Microbiol Biotechnol*. 2000;66:3262–8.
49. Raya A, Sodagari M, Pinzon NM, He X, Zhang Newby BM, Ju LK. Effects of rhamnolipids and shear on initial attachment of *Pseudomonas aeruginosa* PAO1 in glass flow chambers. *Environ Sci Pollut Res Int*. 2010;17:1529–38.
50. Pamp SJ, Tolker-Nielsen T. Multiple roles of biosurfactants in structural biofilm development by *Pseudomonas aeruginosa*. *J Bacteriol*. 2007;189:2531–9.
51. Wang J, Yu B, Tian D, Ni M. Rhamnolipid but not motility is associated with the initiation of biofilm seeding dispersal of *Pseudomonas aeruginosa* strain PA17. *J Biosci*. 2013;38:149–56.
52. Fariq A, Saeed A. Production and biomedical applications of probiotic biosurfactants. *Curr Microbiol*. 2016. doi:[10.1007/s00284-015-0978](https://doi.org/10.1007/s00284-015-0978).
53. Hobbey L, Ostrowski A, Rao FV, Bromley KM, Porter M, Prescott AR, MacPhee CE, van Aalten DMF, Stanley-Wall NR. BslA is a self-assembling bacterial hydrophobin that coats the *Bacillus subtilis* biofilm. *Proc Natl Acad Sci USA*. 2013. doi:[10.1073/pnas.1306390110](https://doi.org/10.1073/pnas.1306390110).
54. Romero D, Kolter R. Functional amyloids in bacteria. *Int Microbiol*. 2014;17:65–73.
55. Kovács AT, van Gestel J, Kuipers OP. The protective layer of biofilm: a repellent function for new class of amphiphilic proteins. *Mol Microbiol*. 2012. doi:[10.1111/j.1365-2958.2012.08101](https://doi.org/10.1111/j.1365-2958.2012.08101).
56. Kobayashi K, Iwano M. BslA (YuaB) forms a hydrophobic layer on the surface of *Bacillus subtilis* biofilms. *Mol Microbiol*. 2012. doi:[10.1111/j.1365-2958.2012.08094](https://doi.org/10.1111/j.1365-2958.2012.08094).
57. Bromley KM, Morris RJ, Hobbey L, Brandani G, Gillespie RM, McCluskey M, Zachariae U, Marenduzzo D, Stanley-Wall NR, MacPhee CE. Interfacial self-assembly of a bacterial hydrophobin. *Proc Natl Acad Sci USA*. 2015;112:5419–24.
58. Stanley-Wall N, MacPhee CE. Connecting the dots between bacterial biofilms and ice cream. *Phys Biol*. 2015. doi:[10.1088/1478-3975/12/6/063001](https://doi.org/10.1088/1478-3975/12/6/063001).
59. Queshi N, Annous BA, Ezeji TC, Karcher P, Maddox IS. Biofilms reactors for industrial bioconversion processes: employing potential of enhanced reaction rates. *Microb Cell Fact*. 2005. doi:[10.1186/1475-2859-4-24](https://doi.org/10.1186/1475-2859-4-24).
60. Maksimova YG. Microbial biofilms in biotechnological processes. *Appl Biochem Microbiol*. 2014;50:750–60.
61. Ercan D, Demirci A. Current and future trends for biofilm reactors for fermentation processes. *Crit Rev Biotechnol*. 2015. doi:[10.3109/07388551.2013.793170](https://doi.org/10.3109/07388551.2013.793170).
62. Rosche B, Li XZ, Hauer B, Schmid A, Buehler K. Microbial biofilms: a concept for industrial catalysis? *Trends Biotechnol*. 2009. doi:[10.1016/j.tibtech.2009.08.001](https://doi.org/10.1016/j.tibtech.2009.08.001).
63. Cheng K-C, Demirci A, Cathmark JM. Advances in biofilm reactors for production of value-added products. *Appl Microbiol Biotechnol*. 2010. doi:[10.1007/s00253-010-2622-3](https://doi.org/10.1007/s00253-010-2622-3).
64. Halan B, Buehler K, Schmid A. Biofilms as living catalysts in continuous chemical synthesis. *Trends Biotechnol*. 2012. doi:[10.1016/j.tibtech.2012.05.003](https://doi.org/10.1016/j.tibtech.2012.05.003).
65. Monds RD, O'Toole GA. The development model of microbial biofilms: ten years of a paradigm up for review. *Trends Microbiol*. 2009;17:73–87.
66. Junter G-A, Coquet L, Vilain S, Jouenne T. Immobilized-cell physiology: current data and potentialities of proteomics. *Enzyme Microb Technol*. 2002;31:201–12.
67. Knudsen GM, Nielsen M-B, Grassby T, Danino-Appleton V, Thomsen LE, Colquhoun IJ, Brocklehurst TF, Olsen JE, Hinton JCD. A third mode of surface-associated growth: immobilization of *Salmonella enterica* serovar Typhimurium modulates the RpoS-directed transcriptional programme. *Environ Microbiol*. 2012;14:1855–75.

68. Selimoglu SM, Elibol M. Alginate as an immobilization material for Mab production via encapsulated hybridoma cells. *Crit Rev Biotechnol*. 2010;30:145–59.
69. Berlanga M, Miñana-Galbis D, Domènch Ò, Guerrero R. Enhanced polyhydroxyalkanoates accumulation by *Halomonas* spp. in artificial biofilms of alginate beads. *Int Microbiol*. 2012. doi:10.2436/20.1501.01.172.
70. Lefebvre J, Vincent J-C. Control of the biomass heterogeneity in immobilized cell systems. Influence of initial cell and substrate concentrations, structure thickness, and type of bioreactors. *Enzyme Microb Technol*. 1997;20:536–43.
71. Hüsken LE, Tramper J, Wijffels RN. Growth and eruption of gel-entrapped microcolonies. In: Wijffels RH, Buitelaar RM, Bucke C, Tramper J, editors. *Immobilized cells: basics and applications*. Netherlands: Elsevier; 1996. p. 336–40.
72. Uppuluri P, Chaturvedi AK, Srinivasan A, Banerjee M, Ramasubramaniam AK, Kohler JR, et al. Dispersion as an important step in the *Candida albicans* biofilm developmental cycle. *PLoS Pathog*. 2010;6:e1000828.
73. Rollet C, Gal L, Guzzo J. Biofilm-detached cells, a transition from a sessile to a planktonic phenotype: a comparative study of adhesion and physiological characteristics in *Pseudomonas aeruginosa*. *FEMS Microbiol Lett*. 2009;290:135–42.
74. Berlanga M, Domènch Ò, Guerrero R. Biofilm formation on polystyrene in detached vs. planktonic cells of polyhydroxyalkanoate-accumulating *Halomonas venusta*. *Int Microbiol*. 2014. doi:10.2436/20.1501.01.223.
75. Ahamad PYA, Kunhi AAM. Enhanced degradation of phenol by *Pseudomonas* sp. CP4 entrapped in agar and calcium alginate beads in batch and continuous processes. *Biodegradation*. 2011;22:253–65.
76. Huang H-Y, Tang Y-J, King V-A-E, Chou J-W, Tsen J-H. Properties of *Lactobacillus reuteri* chitosan-calcium-alginate encapsulation under simulated gastrointestinal conditions. *Int Microbiol*. 2015. doi:10.2436/20.1501.01.235.
77. Zhang Y-W, Prabhu P. Alginate immobilization of recombinant *Escherichia coli* whole cells harboring L-arabinose isomerase for L-ribulose production. *Bioprocess Biosyst Eng*. 2010;33:741–8.
78. Darah I, Nisha M, Lim S-H. Polygalacturonase production by calcium alginate immobilized *Enterobacter aerogenes* NBO2 cells. *Appl Biochem Biotechnol*. 2015. doi:10.1007/s12010-014-1447-4.
79. Atia A, Gomaa A, Fliss I, Beysac E, Garrait G, Subirade M. A prebiotic matrix for encapsulation of probiotics: physicochemical and microbiological study. *J Microencapsulation*. 2016. doi:10.3109/02652048.2015.1134688.
80. Benítez-Cabello A, Romero-Gil V, Rodríguez-Gómez F, Garrido-Fernández A, Jiménez-Díaz R, Arroyo-López FN. Evaluation and identification of poly-microbial biofilms on natural Green Gordal table olives. *Anton van Leeuwen*. 2015. doi:10.1007/s10482-015-0515-2.
81. Hurtado A, Reguant C, Bordons A, Rozès N. Lactic acid bacteria from fermented table olives. *Food Microbiol*. 2012. doi:10.1016/j.fm.2012.01.006.
82. Arroyo-López FN, Romero-Gil V, Bautista-Gallego J, Rodríguez-Gómez F, Jiménez-Díaz R, García-García P, Querol A, Garrido-Fernández A. Yeasts in table olive processing: desirable or spoilage microorganisms? *Int J Food Microbiol*. 2012;160:42–9.
83. Chapot-Chartier M-P, Kulakauskas S. Cell wall structure and function in lactic acid bacteria. *Microb Cell Fact*. 2014;13(Suppl 1):S9. doi:10.1186/1475-2859-13-S1-S9.
84. Arroyo-López FN, Bautista-Gallego J, Domínguez-Manzano J, Romero-Gil V, Rodríguez-Gómez F, García-García P, Garrido-Fernández A, Jiménez-Díaz R. Formation of lactic acid bacteria-yeasts communities on the olive surface during Spanish-style Manzanilla fermentations. *Food Microbiol*. 2012;32:295–301.
85. Domínguez-Manzano J, Olmo-Ruiz C, Bautista-Gallego J, Arroyo-López FN, Garrido-Fernández A, Jiménez-Díaz R. Biofilm formation on abiotic and biotic surfaces during Spanish style green table olive fermentation. *Int J Food Microbiol*. 2012;157:230–8.
86. Grounta A, Panagou EZ. Mono and dual species biofilm formation between *Lactobacillus pentosus* and *Pichia membranifaciens* on the surface of black olives under different sterile brine conditions. *Ann Microbiol*. 2014;64:1757–67.
87. Botta C, Cocolin L. Microbial dynamics and biodiversity in table olive fermentation: culture-dependent and -independent approaches. *Front Microbiol*. 2012. doi:10.3389/fmicb.2012.00245.
88. Grounta A, Doulgeraki AI, Nychas G-JE, Panagou EZ. Biofilm formation on *Conservolea* natural Black olives during single and combined inoculation with a functional *Lactobacillus pentosus* starter culture. *Food Microbiol*. 2016. doi:10.1016/j.fm.2015.12.002.
89. Osborne JP, Mira de Orduña R, Pilone GJ, Liu SQ. Acetaldehyde metabolism by wine lactic acid bacteria. *FEMS Microbiol Lett*. 2000;191:51–5.
90. Lima LJR, Almeida MH, Nout MJN, Zwietering MH. *Theobroma cacao* L., “The food of the Gods”: quality determinants of commercial cocoa beans, with particular reference to the impact of fermentation. *Crit Rev Food Sci Nutr*. 2011. doi:10.1080/10408391003799913.
91. Lee LW, Cheong MW, Curran P, Yu B, Liu SQ. Coffee fermentation and flavor—an intricate and delicate relationship. *Food Chem*. 2015. doi:10.1016/j.foodchem.2015.03.124.
92. Escalante AE, Rebollada-Gómez M, Benítez M, Travisano M. Ecological perspectives on synthetic biology: insights from microbial population biology. *Front Microbiol*. 2015. doi:10.3389/fmicb.2015.00143.
93. Jagmann N, Philipp B. Design of synthetic microbial communities for biotechnological production processes. *J Biotechnol*. 2014;184:209–18.
94. Shong J, Jimenez Diaz MR, Collins CH. Towards synthetic microbial consortia for bioprocessing. *Curr Opin Biotechnol*. 2012;23:798–802.
95. Faust K, Raes J. Microbial interactions: from networks to models. *Nat Rev Microbiol*. 2012;10:538–50.
96. Großkopf T, Soyer OS. Synthetic microbial communities. *Curr Opin Microbiol*. 2014;18:72–7.
97. Haruta S, Kato S, Yamamoto K, Igarashi Y. Intertwined interspecies relationships: approaches to untangle the microbial network. *Environ Microbiol*. 2009;11:2963–9.
98. Pandhal J, Noirel J. Synthetic microbial ecosystems for biotechnology. *Biotechnol Lett*. 2014. doi:10.1007/s10529-014-1480-y.
99. Song H, Ding M-Z, Jia X-Q, Ma Q, Yuan Y-J. Synthetic microbial consortia: from systematic analysis to construction and applications. *Chem Soc Rev*. 2014. doi:10.1039/c4cs00114a.
100. Kaeberlein T, Lewis K, Epstein SS. Isolating “uncultivable” microorganisms in pure culture in a simulated natural environment. *Science*. 2002;296:1127–9.
101. Gich F, Janys MA, König M, Overmann J. Enrichment of previously uncultured bacteria from natural complex communities by adhesion to solid surfaces. *Environ Microbiol*. 2012;14:2984–97.
102. Sieuwerts S, de Bok FAM, Hugenholtz J, van Hylckama Vlieg JET. Unraveling microbial interactions in food fermentations: from classical to genomics approaches. *Appl Environ Microbiol*. 2008. doi:10.1128/AEM.00113-08.
103. Christian N, Handorf T, Ebenhoeh O. Metabolic synergy: increasing biosynthetic capabilities by network cooperation. *Genome Inform Ser*. 2007;18:320–9.
104. Kato S, Haruta S, Cui ZJ, Ishii M, Igarashi Y. Network relationships of bacteria in a stable mixed culture. *Microb Ecol*. 2008;56:403–11.
105. Klitgord N, Segre D. Environments that induce synthetic microbial ecosystems. *PLoS Comput Biol*. 2010;6:e1001002.
106. Mitri S, Foster KR. A genotypic view of social interactions in microbial communities. *Annu Rev Genet*. 2013. doi:10.1146/annurev-genet-111212-133307.
107. Kerner A, Park J, Williams A, Lin XN. A programmable *Escherichia coli* consortium via tunable symbiosis. *PLoS ONE*. 2012;7:e34032.
108. Patle S, Lal B. Ethanol production from hydrolysed agricultural wastes using mixed culture of *Zymomonas mobilis* and *Candida tropicalis*. *Biotechnol Lett*. 2007;29:1839–43.
109. Ma Q, Zhou J, Zhang WW, Meng XX, Sun JW, Yuan YJ. Integrated proteomic and metabolomics analysis of an artificial microbial community for two-step production of vitamin C. *PLoS ONE*. 2011;6:e26108.
110. Liu L, Chen K, Zhang J, Liu L, Chen J. Gelatin enhances 2-keto-L-gulononic acid production based on *Ketogulonigenium vulgare* genome annotation. *J Biotechnol*. 2011. doi:10.1016/j.jbiotec.2011.08.007.
111. Xia T, Eiteman MA, Altman E. Simultaneous utilization of glucose, xylose and arabinose in the presence of acetate by a consortium of *Escherichia coli* strains. *Microb Cell Fact*. 2012;11:77.
112. Goyal G, Tsai S-L, Madan B, DaSilva NA, Chen W. Simultaneous cell growth and ethanol production from cellulose by an engineered yeast

- consortium displaying a functional mini-cellulosome. *Microb Cell Fact*. 2011;10:89.
113. Bland RR, Chen HC, Jewell WJ, Bellamy WD, Zall RR. Continuous high rate production of ethanol by *Zymomonas mobilis* in an attached film expanded bed fermentor. *Biotechnol Lett*. 1982;4:323–8.
 114. Kunduru MR, Pometto AL. Continuous ethanol production by *Zymomonas mobilis* and *Saccharomyces cerevisiae* in biofilm reactors. *J Ind Microbiol Biotechnol*. 1996;16:249–56.
 115. Todhanakasem T, Sangsutthiseree A, Areerat K, Young GM, Thanonkeo P. Biofilm production by *Zymomonas mobilis* enhances ethanol production and tolerance to toxic inhibitors from rice bran hydrolysate. *New Biotechnol*. 2014;31:451–9.
 116. Forberg C, Haggstrom L. Control of cell adhesion and activity during continuous production of acetone and butanol with adsorbed cells. *Enz Microbial Technol*. 1985;7:230–4.
 117. Urbance SE, Pometto AL, DiSpirito AA, Denli Y. Evaluation of succinic acid continuous and repeat-batch biofilm fermentation by *Actinobacillus succinogenes* using plastic composite support bioreactors. *Appl Microbiol Biotechnol*. 2004;65:664–70.

Submit your next manuscript to BioMed Central
and we will help you at every step:

- We accept pre-submission inquiries
- Our selector tool helps you to find the most relevant journal
- We provide round the clock customer support
- Convenient online submission
- Thorough peer review
- Inclusion in PubMed and all major indexing services
- Maximum visibility for your research

Submit your manuscript at
www.biomedcentral.com/submit

