

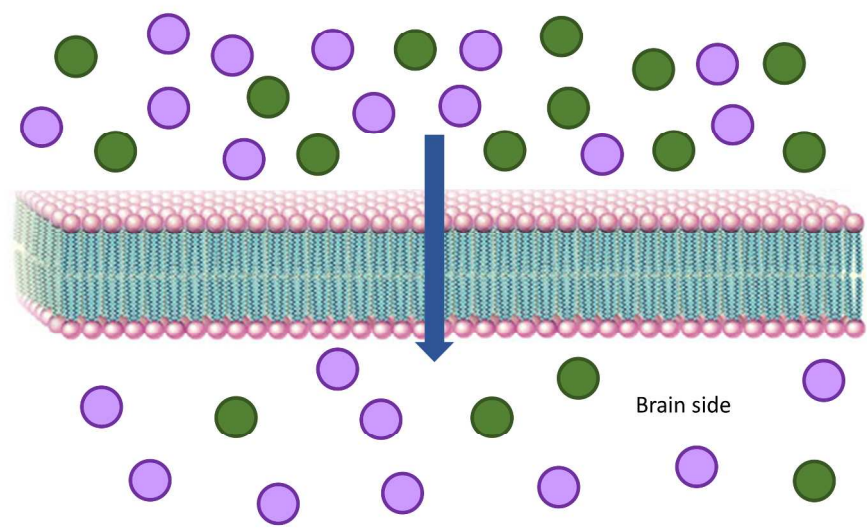
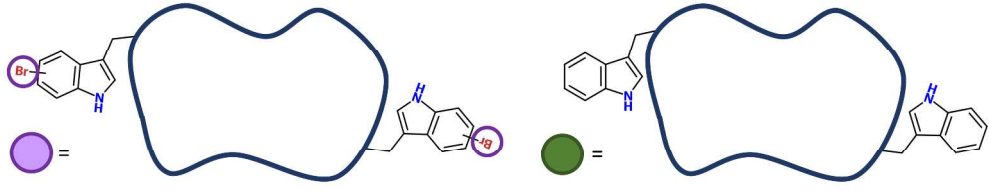
Biopolymers

BROMOTRYPTOPHANS AND THEIR INCORPORATION IN CYCLIC AND BICYCLIC PRIVILEGED PEPTIDES

Journal:	<i>Biopolymers</i>
Manuscript ID	BIP-2017-0166.R2
Wiley - Manuscript type:	Original Article
Date Submitted by the Author:	n/a
Complete List of Authors:	Garcia-Pindado, Julia; Institute for Research in Biomedicine (IRB Barcelona), Barcelona Institute of Science and Technology (BIST) Willemse, Tom; Vrije Universiteit Brussel, Departments of Chemistry and Bio-engineering Sciences; University of Antwerp, Organic Synthesis Goss, Rebecca; University of St Andrews, School of Chemistry and BSRC Maes, Bert; University of Antwerp, Organic Synthesis Giralt, Ernest; Institut de Recerca Biomedica, chemistry Ballet, Steven; Vrije Universiteit Brussel, Departments of Chemistry and Bio-engineering Sciences Teixidó, Meritxell; Institute for Research in Biomedicine (IRB Barcelona), Barcelona Institute of Science and Technology (BIST)
Keywords:	solid-phase peptide synthesis, tryptophan, bromination, on-resin Miyaura and Suzuki cross-coupling, PAMPA and biostability

SCHOLARONE™
Manuscripts

1
2
3
4
5
6
7
8
9
10
11
12
13
14
15
16
17
18
19
20
21
22
23
24
25
26
27
28
29
30
31
32
33
34
35
36
37
38
39
40
41
42
43
44
45
46
47
48
49
50
51
52
53
54
55
56
57
58
59
60



260x260mm (300 x 300 DPI)

BROMOTRYPTOPHANS AND THEIR INCORPORATION IN CYCLIC AND BICYCLIC PRIVILEGED PEPTIDES

Júlia García-Pindado^a, Tom Willemse^{b,c}, Rebecca Goss^d, Bert U. W. Maes^c, Ernest Giralt^{a,e*}, Steven Ballet^{b*}, Meritxell Teixidó^{a*}

^a Institute for Research in Biomedicine (IRB Barcelona), Barcelona Institute of Science and Technology (BIST), 08028, Barcelona, Spain

^b Research Group of Organic, Departments of Chemistry and Bioengineering Sciences, Vrije Universiteit Brussel, 1050, Brussels, Belgium

^c Organic Synthesis, University of Antwerp, B-2020, Antwerp, Belgium

^d School of Chemistry and BSRC, University of St Andrews, KY16 9ST, St Andrews, United Kingdom

^e Department of Organic Chemistry, University of Barcelona, 08028, Barcelona, Spain

ABSTRACT:

While revisiting biologically active natural peptides, the importance of the tryptophan residue became clear. In this article, the incorporation of this amino acid, brominated at different positions of the indole ring, into cyclic peptides was successfully achieved. These products demonstrated improved properties in terms of passive diffusion, permeability across membranes, biostability in human serum and cytotoxicity. Moreover, these brominated tryptophans at positions 5, 6 or 7 proved to be compatible as building blocks to prepare bicyclic stapled peptides by performing on-resin Suzuki-Miyaura cross-coupling reactions.

Keywords: solid-phase peptide synthesis; tryptophan; bromination; on-resin Miyaura and Suzuki-Miyaura cross-coupling; PAMPA; biostability

INTRODUCTION:

The relevance of the amino acid tryptophan is widely known in the field of natural products, as this particular building block represents an important biosynthetic precursor for some bioactive compounds such as alkaloids¹. Additionally, a common feature of membrane-spanning proteins is their preference for aromatic amino acids, namely tyrosine or tryptophan^{2,3}. Aromatic, as well as charged, amino acids may act as an anchor for these proteins while they also participate in interfacial interactions⁴. The indole ring of tryptophan can display π -cation interactions, which are known to be of high importance in biological systems and are of increasing interest in medicinal chemistry. These interactions are present in 65% of the protein interfaces⁵ and are considered to be real driving forces in biological processes. Stability and folding of proteins⁶ along with specific drug-receptor interactions⁷ have been related to π -cation interactions.

The presence of tryptophan in peptides and proteins is crucial for their biological activity despite their low natural abundance (less than 1% of amino acids)⁸. At the beginning of the 21st century, novel substitution patterns within tryptophan were discovered, thus providing structures that are not directly accessible for ribosomes, including post-translationally modified analogues. Ribosomally synthesized and post-translationally modified peptides (RiPPs) comprise constrained peptides with improved

1
2
3 pharmacological properties such as higher stability, functionality and target recognition⁹. Those
4 biologically active peptides are formed through a rich variety of post-translational modification
5 chemistries, some of them involving tryptophan derivatization. Position 3 of tryptophan can, for
6 example, be isoprenylated in bacteria with a farnesyl moiety or geranyl group, yielding a tricyclic
7 proline-like core in the latter case¹⁰. Another unusual modification is produced in bacteria with
8 metalloenzymes able to crosslink Lys and Trp side chains, to form macrocyclic peptides¹¹. Within RiPPs,
9 lanthipeptides, for instance, constitute an abundant family, some of which possess antimicrobial
10 activities. Of note, a unique 5-ClTrp moiety, inserted through biocatalysis, is present in a clinical
11 candidate with antimicrobial bioactivity. Here, the chlorine substituent is responsible for its increased¹².

12
13
14 Tryptophan's scarce presence in proteins might be the ideal opportunity for selective derivatization,
15 although it can also suffer from a poor accessibility when aiming at conjugation. For this latter strategy,
16 tryptophan can be introduced by recombinant engineering. Trp can be abolished in a living organism via
17 a surrogate noncanonical amino acid named L-β-(thieno[3,2-*b*]pyrrolyl)alanine ([3,2]Tpa)¹³. This
18 modification was later implemented in bioactive peptides by genetic code engineering¹⁴. The specific
19 reactivity of this amino acid is an important challenge to overcome when addressing protein
20 bioconjugation. Trp side chain labeling can be reached using malonaldehydes in harsh reaction
21 conditions or by means of metallocarbenoids¹⁵. A relevant example was described by Hansen *et al.*¹⁶,
22 performing chemo- and regioselective ethynylation of Trp-containing proteins. In addition to the
23 outstanding selectivity obtained, the alkyne substituent can serve as a handle to undergo click chemistry
24 or Pd-catalyzed Sonogashira reactions. Owing to the great interest in tryptophan bioconjugation and the
25 raised concerns of the current methods, novel strategies continuously appear. Interestingly, a transition
26 metal-free tryptophan-selective bioconjugation of proteins has recently been described¹⁷.

27
28
29
30 Natural cyclizations involving the Trp side chain mainly take place through 5-membered ring formation.
31 For example, the Savige-Fontana tryptathionylation, gives way to a rigid bicyclic peptide cross-link
32 utilizing Trp and Cys side chains¹⁸. Iodine-mediated Cys deprotection and formation of the Trp-Cys
33 thioether bridge provided an analogous result¹⁹. Nevertheless, we developed an alternative strategy
34 which involves conjugation and cyclization at the 6-membered ring. Given the broad interest in Trp-
35 based chemistry, new synthetic strategies have been applied for the derivatization of the indole ring of
36 tryptophan. Among all possible derivatization products, the halotryptophan motif is especially relevant
37 due to its presence in natural bioactive compounds^{20,21}. Introduction of halogens at different positions
38 of the indole ring of tryptophan opens a gateway to new peptides with interesting properties.
39 Moreover, access to these building blocks is realized by biotransformation of readily available starting
40 materials.²² The potential fine-tuning of some properties such as the membrane permeability,
41 biostability in human serum or fluorescence is highly significant in the future application of these
42 building blocks in peptides. In addition to halogens, other interesting groups such as a cyano, azido or
43 hydroxyl function are also quite relevant, and all of them can be obtained from the same precursor,
44 namely a boronated Trp²³.

45
46
47 Introduction of some Trp analogues in catalytic proteins has proved to be advantageous²⁴. In this
48 context, Trp has, for example, demonstrated its involvement in the catalysis of ligninolytic peroxidases²⁵.

49
50
51 Of relevance to this work, halogenated peptides, as well as borylated ones, can also be used as synthetic
52 precursors for Suzuki-Miyaura reactions. Taking advantage of the previously established methodology
53 for on-resin Suzuki-Miyaura cross-coupling reactions^{22,26,27}, bicyclic tryptophan-stapled peptides can be
54 prepared as privileged peptide scaffolds involved in membrane transport.

METHODS:

Protected amino acids were supplied by Iris Biotech (Marktredwitz, Germany). Wang[®] resin was obtained from PCAS BioMatrix Inc. (Quebec, Canada). DIEA, DIPCDI and ninhydrin were purchased from Fluka Chemika (Buchs, Switzerland) and HOAt from GL Biochem Shanghai Ltd. (Shanghai, China). Solvents for SPPS, such as DMF and DCM, were purchased from SDS (Barcelona, Spain) and trifluoroacetic acid (TFA) from Scharlau (Barcelona, Spain). Other chemical reagents were acquired from Aldrich (Milwaukee, WI) with the highest commercially available purity. Syringes of 20 ml for SPPS and Eppendorf tubes were provided by Scharlau and Falcon tubes by Deltalab. PAMPA plates and system solution were supplied by pION (Woburn, MA USA), and porcine polar brain lipid extract (PBLEP) by Avantis Polar Lipids (Alabaster, AL). The basic instruments used were a lyophilizer (Virtis, Frezmobile 25 EL), oven (Selecta, Digitronic), vortex [Merck EuroLab, MELB1719 (EU)], magnetic stirrer (IKA, RCT basic), centrifuge (Eppendorf, 5415R), GUTBOX™ (pION Aqueous Boundary Layer Thickness @ Double-Sink™), pipettes (Gilson, Pipetman P2, P20, P200, P1000) and Shimadzu UV-2501 PC UV-VIS spectrophotometer.

Characterization of the peptides and purity assessment**HPLC-analytical scale**

HPLC analyses were performed on a Waters Alliance 2695 with an automated injector and a photodiode array detector 2998 Waters (Waters, Milford, MA) using a SunFire™ C₁₈ column, 3.5 μm, 4.6x100 mm. EmpowerPro 2 software was used to process the data. Detection was performed at 220 nm. The analyses were carried out with a linear gradient of CH₃CN (0.036% TFA) in H₂O (0.045% TFA) over 8 min at a flow rate of 1 ml/min. High performance liquid chromatography purification was performed in a Waters system with 2545 binary gradient module, a 2767 manager collector, and a 2998 photodiode array detector with MassLynx 4.1 software. The column used was a Sunfire™ C18, 3.5 μm, 10 × 150 mm, 100 Å from Waters. The solvents were prepared as CH₃CN (0.1% TFA) and H₂O (0.1% TFA). The flow rate was 10 ml/min. Analytical HPLC analyses were performed to validate the correct purification of the peptide. Purity and identity was assessed by analytical UPLC-MS. Different gradients were explored to assess separation of the peak corresponding to the product from the impurities.

UPLC

UPLC analyses were performed on a Waters Acquity with an automated injector and a photodiode array detector Waters (Waters, Milford, MA) using a BEH C₁₈ column, 1.7 μm, 2.1x50 mm. Data was processed with an EmpowerPro 3 software. Detection was performed at 220 nm. The analyses were carried out with linear gradients CH₃CN, UPLC grade, (0.036% TFA) in H₂O (0.045% TFA) over 2 min at a flow rate of 0.61 ml/min.

UPLC-ESI-MS

UPLC-MS analyses were performed on a Waters Acquity with an automated injector and a photodiode array detector Waters (Waters, Milford, MA) coupled to an electrospray ion source ESI-MS Micromass ZQ. A BEH C₁₈ column, 1.7 μm, 2.1x50 mm was used. Data were processed with Masslynx 4.1 software. The instrument was operated in the positive ESI (+) ion mode. Detection was performed at 220 nm and the analyses were carried out with linear gradients CH₃CN, UPLC grade, (0.07% formic acid) in H₂O (0.1% formic acid) over 2 min at a flow rate of 0.61 ml/min. Samples were introduced, in a volume (1-100 μL) whose absorbance unit was between 0.2-0.4, into the mass spectrometer ion source directly through an UPLC autosampler.

MALDI-TOF MS

Mass spectrometry characterization of some peptides was carried out using a MALDI-TOF Applied Biosystem 4700. 1 μL of the peptide in a solution with a concentration around 1 mg/mL was mixed with 1 μL of α -cyano-4-hydroxycinnamic acid (ACH) matrix, and then seeded on the MALDI plate and air-dried. For the matrix, 10 mg/mL solution of ACH was prepared in $\text{CH}_3\text{CN}/\text{H}_2\text{O}$ 1:1 (v/v) with 0.1% TFA.

LTQ-FT MS

Some of the peptides were analysed using a high-resolution mass spectrometer to obtain their exact mass. Samples were dissolved in 200 μL of $\text{H}_2\text{O}:\text{CH}_3\text{CN}$ and diluted in $\text{H}_2\text{O}:\text{CH}_3\text{CN}$ 1% formic acid for MS analysis. The analysis was performed in a LTQ-FT Ultra (Thermo Scientific) and the samples were introduced by automated nanoelectrospray. A NanoMate (Advion BioScience, Ithaca, NY, USA) infused the samples through the ESI Chip, which consists of 400 nozzles in a 20x20 array. Spray voltage was 1.7 kV and delivery pressure was 0.3 psi. MS conditions were: NanoESI, positive ionization, capillary temperature 200 $^\circ\text{C}$, tube lens 119 V, ion spray voltage 2 kV and m/z 100-2000 amu.

NMR

^1H NMR and ^{13}C NMR spectra were recorded on a Bruker Avance DRX 250 console and a Bruker Avance II 500 console at 250 or 63 MHz and 500 or 126 MHz, respectively. The deuterated solvent is mentioned for each product and spectrum. Chemical shifts (δ) are presented in parts per million (ppm), while coupling constants (J) are given in Hertz (Hz).

General method for the solid-phase peptide synthesis

Solid-phase peptide syntheses were performed at different scales between 100 and 500 μmol s. L-amino acids were used except for D-proline. Peptide elongations were carried out in 20-ml polypropylene syringes, each fitted with a polypropylene porous disk. Solvents and soluble reagents were removed by filtration. Washings between steps were performed with DMF (3x30 s) and DCM (3x30 s) using 10 ml of solvent/g resin each time. During couplings, the resin was stirred using an orbital shaker.

Amino acid H-(XBr)Trp-OH x=5,6 or 7

The halotryptophans were prepared according to a reported biotransformation method²² and obtained as HCl salts. Briefly, the indole substrate (2 mmol) and serine (1.25 equiv., 2.5 mmol) were suspended in 100 ml buffer (100 mM potassium phosphate, adjusted to pH 7.8 using 10 M potassium hydroxide). The cell lysate (3 ml), obtained as described in Smith *et al.*²² was transferred to dialysis tubing and gently placed in the reaction mixture. The reaction was incubated at 37 $^\circ\text{C}$ while shaking at 180 rpm for 48 hours. The cellulose tubing was removed and washed with water. Unreacted indole was recovered by extraction with ethyl acetate (2 x 50 ml) and the aqueous phase was concentrated under reduced pressure to approximately 50 ml. The crude halotryptophans were purified by reverse-phase (RP) column chromatography with 97:3 and 0.5:99.5 methanol:water used as mobile phases. The reverse-phase column was packed in methanol and conditioned by passing 50 ml of 20 %, 40 %, 60 %, 80 % and 100 % water in methanol through the column sequentially, never allowing the column to run dry. A further 250 ml water was passed through the column, after which the concentrated aqueous phase was loaded onto the column. 500 ml water was passed through the column to remove salts, serine, and pyridoxal phosphate (PLP). Halotryptophans were eluted by passing 250 ml methanol through the column, following which the solvent was removed under vacuum. The sample was then treated twice with 20 ml 0.1 M hydrochloric acid to convert the tryptophan to the hydrochloride salt, removing the solvent under reduced pressure. The salt was then dissolved in 50 - 100 ml water and lyophilised to obtain the purified L-halotryptophan as a colourless, pink, yellow, or tan powder.

- **Characterization of 5-bromotryptophan**²²

HPLC t_R : 10.7 min; MS (ESI): $[M+H, ^{79}\text{Br}]^+_{\text{expected}} = 283$; $[M+H, ^{79}\text{Br}]^+_{\text{found}} = 283$, $[M+H, ^{81}\text{Br}]^+_{\text{expected}} = 285$; $[M+H, ^{81}\text{Br}]^+_{\text{found}} = 285$; $^1\text{H NMR}$ (300 MHz, D_2O): δ 7.67 (1H, d, $J = 1.8$), 7.30 (1H, d, $J = 8.7$), 7.25 - 7.19 (2H, m), 4.23 (1H, dd, $J = 7.1, 5.5$), 3.32 (1H, dd, $J = 15.4, 5.4$), 3.24 (1H, dd, 15.4, 7.2); $^{13}\text{C NMR}$ (75 MHz, D_2O): 172.3, 135.2, 128.5, 126.8, 124.9, 120.8, 113.8, 112.3, 106.3, 55.6, 26.0.

- **Characterization of 6-bromotryptophan**²²

HPLC t_R : 10.8 min; MS (ESI): $[M+H, ^{79}\text{Br}]^+_{\text{expected}} = 283$; $[M+H, ^{79}\text{Br}]^+_{\text{found}} = 283$, $[M+H, ^{81}\text{Br}]^+_{\text{expected}} = 285$; $[M+H, ^{81}\text{Br}]^+_{\text{found}} = 285$; $^1\text{H NMR}$ (300 MHz, D_2O): δ 7.55 (1H, d, $J = 1.7$), 7.39 (1H, d, $J = 8.5$), 7.18 (1H, s), 7.15 (1H, dd, $J = 8.5, 1.7$), 4.24 (1H, dd, $J = 7.0, 5.5$), 3.35 (1H, dd, $J = 15.4, 5.5$), 3.27 (1H, dd, $J = 15.4, 7.1$); $^{13}\text{C NMR}$ (75 MHz, D_2O): δ 172.3, 137.3, 126.2, 125.8, 122.6, 119.8, 115.2, 114.8, 106.9, 53.6, 26.0.

- **Characterization of 7-bromotryptophan**²²

HPLC t_R : 10.7 min; HRMS (ESI): 283.0077 calcd. for $\text{C}_{11}\text{H}_{11}^{79}\text{BrN}_2\text{O}_2$; $[M+H, ^{79}\text{Br}]^+_{\text{found}} = 283.0057$; 285.0057 calcd. for $\text{C}_{11}\text{H}_{11}^{81}\text{BrN}_2\text{O}_2$; $[M+H, ^{81}\text{Br}]^+_{\text{found}} = 285.0045$. $^1\text{H NMR}$ (300 MHz, D_2O): δ 7.54 (1H, dd, $J = 8.0, 0.8$), 7.36 (1H, dd, $J = 7.6, 0.6$), 7.26 (1H, s), 6.99 (1H, t, $J = 7.8$), 4.25 (1H, dd, $J = 5.5, 7.1$), 3.38 (1H, dd, $J = 5.3, 15.7$), 3.29 (1H, dd, $J = 7.0, 15.5$); $^{13}\text{C NMR}$ (75 MHz, D_2O): δ 172.4, 135.1, 128.2, 126.2, 124.8, 121.0, 117.9, 108.1, 104.8, 53.7, 26.2.

Amino acid derivatization Fmoc-(XBr)Trp-OH x=5,6 or 7

The Fmoc-protected building blocks were synthesized according to the following procedure²⁸: The corresponding bromotryptophan hydrochloride salt (500 mg, 1.57 mmol) was dissolved with Na_2CO_3 (1.2 equiv., 1.89 mmol) in 10 ml H_2O . To this was added a solution of Fmoc-OSu (1.1 equiv., 1.72 mmol) in 10 ml dioxane. The reaction mixture was stirred overnight at room temperature. Reaction completion was checked by HPLC and the mixture was concentrated. The resulting aqueous phase was acidified with 1 N HCl (pH = 1) and extracted with DCM (4x 30 ml). The combined organic phase was washed with 1 N HCl, dried over MgSO_4 and concentrated by rotary evaporation. The resultant crude was triturated with a mixture of DCM/hexane and filtered over a glass frit. The obtained pink solid was further purified with flash column chromatography (DCM/MeOH/AcOH 97:2:1, for r_{ref} see individual compound) and concentrated to obtain white solids.

- **Characterization of Fmoc-5-bromotryptophan**²⁸

HPLC t_R : 18.9 min; TLC r_{ref} : 0.19 (DCM/MeOH/AcOH 97:2:1); HRMS (ESI): 529.0556 calcd. for $\text{C}_{26}\text{H}_{20}^{81}\text{BrN}_2\text{O}_4\text{NaH}_p^+$; $[M+H]^+_{\text{found}} = 529.0552$; $^1\text{H-NMR}$ (500 MHz, DMSO-d_6): δ 12.65 (1H, br s), 11.06 (1H, s), 7.87 (2H, d, $J = 7.7$ Hz), 7.75 (1H, d, $J = 1.3$ Hz), 7.70 (1H, d, $J = 8.1$ Hz), 7.63 (2H, dd, $J = 15.6$ Hz, 7.5 Hz), 7.39 (2H, q, $J = 7.1$ Hz), 7.22-7.32 (4H, M), 7.17 (1H, dd, $J = 8.5$ Hz, 1.7 Hz), 4.14-4.22 (4H, M), 3.15 (2H, dd, $J = 14.5$ Hz, 4.6 Hz), 2.99 (2H, dd, $J = 14.5$ Hz, 9.8 Hz); Yield: 561 mg (71%)

- **Characterization of Fmoc-6-bromotryptophan**²⁸

HPLC t_R : 18.9 min; TLC r_{ref} : 0.16 (DCM/MeOH/AcOH 97:2:1); HRMS (ESI): 529.0556 calcd. for $\text{C}_{26}\text{H}_{20}^{81}\text{BrN}_2\text{O}_4\text{NaH}_p^+$; $[M+H]^+_{\text{found}} = 529.0579$; $^1\text{H-NMR}$ (500 MHz, DMSO-d_6): δ 12.66 (1H, br s), 10.98 (1H, s), 7.87 (2H, d, $J = 7.5$ Hz), 7.62-66 (3H, M), 7.51 (2H, M), 7.37-41 (2H, M), 7.27 (2H, M), 7.19 (1H, d, $J = 2.3$ Hz), 7.09 (1H, dd, $J = 8.3$ Hz, 1.4 Hz), 4.15-4.22 (4H, M), 3.16 (1H, dd, $J = 14.5$ Hz, 4.5 Hz), 2.99 (1H, dd, $J = 14.5$ Hz, 9.8 Hz); Yield: 589 mg (75%)

- **Characterization of Fmoc-7-bromotryptophan**²⁸

HPLC t_R : 19.3 min; TLC r_{ref} : 0.22 (DCM/MeOH/AcOH 97:2:1); HRMS (ESI): 529.0556 calcd. for $\text{C}_{26}\text{H}_{20}^{81}\text{BrN}_2\text{O}_4\text{NaH}_p^+$; $[M+H]^+_{\text{found}} = 529.0511$; $^1\text{H-NMR}$ (500 MHz, DMSO-d_6): δ 12.71 (1H, br s), 11.09 (1H, s), 7.86 (2H, d, $J = 7.5$ Hz), 7.70 (1H, d, $J = 8.1$ Hz), 7.64 (1H, d, $J = 7.5$ Hz), 7.61 (1H, d, $J = 7.5$ Hz), 7.58 (1H, d, $J = 7.9$ Hz), 7.39 (2H, m), 7.24-7.31 (4H, M), 6.93 (1H, t, $J = 7.7$ Hz), 4.19-4.24 (2H, M), 4.17 (2H, m), 3.19 (1H, dd, $J = 14.5$ Hz, 4.3 Hz), 3.19 (1H, dd, $J = 14.5$ Hz, 10.4 Hz); Yield: 592 mg (75%)

Amino acid derivatization pNZ-(XBr)Trp-OH x=5,6 or 7

The derivatized amino acid was prepared from H-(XBr)Trp-OH. *p*-Nitrobenzyl chloroformate (1 equiv.) was dissolved in dioxane (3 ml). Sodium azide (1.2 equiv.), previously dissolved in H₂O (2 ml), was added to this solution. This mixture was vigorously stirred at room temperature for 3 h. The amino acid, dissolved in dioxane (16 ml) and 2% aq. NaHCO₃ (16 ml), was then introduced dropwise. The mixture was allowed to react for 24 h at room temperature. The pH was kept at 9-10 and readjusted when needed. Completion of the reaction was monitored by thin layer chromatography (TLC).

The crude product was separated in H₂O/methyl-*tert*-butyl ether (MTBE) 1:1 (100 ml), and the aqueous phase was extracted with MTBE (2x50 ml). The pH was adjusted to 4 with aqueous HCl 12 N. The products precipitated as yellow pale solids which were finally filtered, washed, resuspended in H₂O and lyophilized.

Cleavage conditions

Peptides were cleaved from the CTC resin using a mixture of 2% TFA in DCM (6x1 min) and from the Wang resin with 99:0.5:0.5 TFA/H₂O/TIS. The compounds were then filtrated and washed with DCM. After evaporating under vacuum, they were dissolved in CH₃CN:H₂O and lyophilized.

Head-to-tail cyclization in solution

Cyclic peptides were prepared by treatment of the linear precursors with PyBOP (2 equiv.), HOAt (1 equiv.), DIEA (6 equiv.) in DCM/1% DMF (final concentration 1 mM) at room temperature for 24-48 h. A final purification step by semipreparative HPLC on a C₁₈ column was required to obtain the pure cyclic peptides.

Characterization of the final peptides:**cyclo(Lys-(5&)Trp-Lys-(5&)Trp-D-Pro)**

In the manuscript, we follow for brevity the nomenclature described in Spengler *et al.*²⁹

The peptide was prepared using the standard methodology of García-Pindado *et al.*²⁶ *p*NZ-(5Br)Trp-OH and Fmoc-(5Br)Trp-OH were used as the second and fourth amino acid, respectively. The synthesis was performed on solid-phase using Fmoc/*t*Bu chemistry. Miyaura borylation was carried out on-resin at the tripeptide level to form the boronic acid of the tryptophan derivative. Once the pentapeptide was obtained, the on-resin Suzuki reaction yielded the desired stapled peptide, bridged between the two tryptophan moieties. UPLC t_R (G 0-100% CH₃CN/H₂O in 2 min): 1.45 min; UPLC-MS t_R (G 0-100% CH₃CN/H₂O in 2 min): 1.68 min, [M+H⁺]_{expected}= 710.90, [M+H⁺]_{found}= 709.30, yield (synthesis+purification): 2%

cyclo(Lys-(6&)Trp-Lys-(6&)Trp-D-Pro)

The peptide was prepared using the standard methodology of García-Pindado *et al.*²⁶ *p*NZ-(6Br)Trp-OH and Fmoc-(6Br)Trp-OH were used as the second and fourth amino acid, respectively. The synthesis was performed on solid-phase using Fmoc/*t*Bu chemistry. Miyaura borylation was carried out on-resin at the tripeptide level to form the boronic acid of the tryptophan derivative. Once the pentapeptide was obtained, on-resin Suzuki reaction yielded the desired stapled peptide between the two tryptophans.

UPLC t_R (G 0-100% CH₃CN/H₂O in 2 min): 1.44 min; UPLC-MS t_R (G 0-100% CH₃CN/H₂O in 2 min): 1.69 min, [M+H⁺]_{expected}= 710.90, [M+H⁺]_{found}= 709.80, (synthesis+purification): 5%

cyclo(Lys-(7&)Trp-Lys-(7&)Trp-D-Pro)

The peptide was prepared using the standard methodology of García-Pindado *et al.*²⁶ *p*NZ-(7Br)Trp-OH and Fmoc-(7Br)Trp-OH were used as the second and fourth amino acids, respectively. The synthesis was

performed on solid-phase using Fmoc/tBu chemistry. Miyaura borylation was carried out on-resin at the tripeptide level to form the boronic acid of the tryptophan derivative. Once the pentapeptide was obtained, on-resin Suzuki reaction yielded the desired stapled peptide between the two tryptophans. UPLC t_R (G 0-100% CH₃CN/H₂O in 2 min): 1.75 min; UPLC-MS t_R (G 0-100% CH₃CN/H₂O in 2 min): 1.75 min, $[M+H]^+$ _{expected} = 710.90, $[M+H]^+$ _{found} = 709.70, yield (synthesis+purification): 3%

cyclo(Lys-(5Br)Trp-Lys-(5Br)Trp-D-Pro)

The peptide was prepared from D-Pro-2-chlorotrityl resin (1 equiv.= 0.58 mmol). Fmoc-(5Br)Trp-OH and Fmoc-Lys(Boc)-OH residues (3 equiv.) were attached using DIPCDI (2 equiv. for Trp and 3 equiv. for Lys) and HOAt (2 equiv. for Trp and 3 equiv. for Lys) as coupling agents. Cleavage of the sequence from the resin with TFA/DCM 2:98 provided the desired peptide. Subsequently, the general cyclization method was used. Boc removal was performed with TFA/DCM 1:1 solution. The mixture was stirred at room temperature for 2 h. The reaction was monitored by TLC (AcOEt/DCM 1:1) using the ninhydrin staining solution. The solvent was evaporated and the crude product was dissolved in H₂O/ CH₃CN 1:1 and lyophilized. UPLC t_R (G 0-100% CH₃CN/H₂O in 2 min): 1.35 min; UPLC-MS t_R (G 0-100% CH₃CN/H₂O in 2 min): 1.42 min, $[M+H]^+$ _{expected} = 884.69, $[M+H]^+$ _{found} = 883.93, HRMS (ESI): 882.22962 calcd. for C₃₉H₅₀N₉O₅Br₂; $[M+H]^+$ _{found} = 882.22829; yield (synthesis + purification): 15%

cyclo(Lys-(6Br)Trp-Lys-(6Br)Trp-D-Pro)

This peptide was prepared from D-Pro-2-chlorotrityl resin (1 equiv.= 0.58 mmol). Fmoc-(6Br)Trp-OH and Fmoc-Lys(Boc)-OH residues (3 equiv.) were attached using DIPCDI (2 equiv. for Trp and 3 equiv. for Lys) and HOAt (2 equiv. for Trp and 3 equiv. for Lys) as coupling agents. Cleavage of the sequence with TFA/DCM 2:98 provided the desired peptide. The general cyclization method was used. Boc removal was performed with TFA/DCM 1:1 solution. The mixture was stirred at room temperature for 2 h. The reaction was monitored by TLC (AcOEt/DCM 1:1) using the ninhydrin staining solution. The solvent was evaporated and the crude product was dissolved in H₂O/ CH₃CN 1:1 and lyophilized. UPLC t_R (G 0-100% CH₃CN/H₂O in 2 min): 1.35 min; UPLC-MS t_R (G 0-100% CH₃CN/H₂O in 2 min): 1.42 min, $[M+H]^+$ _{expected} = 884.69, $[M+H]^+$ _{found} = 883.99, HRMS (ESI): 882.22962 calcd. for C₃₉H₅₀N₉O₅Br₂; $[M+H]^+$ _{found} = 882.22969; yield (synthesis + purification): 15%

cyclo(Lys-(7Br)Trp-Lys-(7Br)Trp-D-Pro)

This peptide was prepared from D-Pro-2-chlorotrityl resin (1 equiv.= 0.58 mmol). Fmoc-(7Br)Trp-OH and Fmoc-Lys(Boc)-OH residues (3 equiv.) were attached using DIPCDI (2 equiv. for Trp and 3 equiv. for Lys) and HOAt (2 equiv. for Trp and 3 equiv. for Lys) as coupling agents. Cleavage of the sequence with TFA/DCM 2:98 provided the desired peptide. The general cyclization method was used. Boc removal was performed with TFA/DCM 1:1 solution. The mixture was stirred at room temperature for 2 h. The reaction was monitored by TLC (AcOEt/ DCM 1:1) using the ninhydrin staining solution. The solvent was evaporated and the crude product was dissolved in H₂O/ CH₃CN 1:1 and lyophilized. UPLC t_R (G 0-100% CH₃CN/H₂O in 2 min): 1.35 min; UPLC-MS t_R (G 0-100% CH₃CN/H₂O in 2 min): 1.42 min, $[M+H]^+$ _{expected} = 884.69, $[M+H]^+$ _{found} = 883.99, HRMS (ESI): 882.22962 calcd. for C₃₉H₅₀N₉O₅Br₂; $[M+H]^+$ _{found} = 882.22973; yield (synthesis + purification): 10%

H-Lys-Trp-Lys-Trp-D-Pro-OH

This peptide was prepared from D-Pro-2-chlorotrityl resin (1 equiv.= 0.58 mmol). Fmoc-Trp(Boc)-OH and Fmoc-Lys(Boc)-OH residues (3 equiv.) were attached using DIPCDI (3 equiv.) and HOAt (3 equiv.) as coupling agents. Cleavage of the sequence with TFA/DCM 95:5 provided the desired peptide. The mixture was evaporated and the crude product was dissolved in H₂O/CH₃CN 1:1 and lyophilized. UPLC

t_R (G 0-100% CH₃CN/H₂O in 2 min): 1.26 min; UPLC-MS t_R (G 0-100% CH₃CN/H₂O in 2 min): 1.18 min, [M+H⁺]_{expected}= 744.90, [M+H⁺]_{found}=744.10, HRMS (ESI): 744.41916 calcd. for C₃₉H₅₄N₉O₆; [M+H⁺]_{found}=744.41898; yield (synthesis + purification): 60%

cyclo(-Lys-Trp-Lys-Trp-D-Pro)

This peptide was prepared from D-Pro-2-chlorotrytil resin (1 equiv.=mmol). Fmoc-Trp(Boc)-OH and Fmoc-Lys(Boc)-OH residues (3 equiv.) were attached using DIPCDI (3 equiv.) and HOAt (3 equiv.) as coupling agents. Cleavage of the sequence with TFA/DCM 2:98 provided the desired peptide. Cyclization was performed with the general method followed by Boc removal with TFA/DCM 1:1 solution. The mixture was stirred at room temperature for 2 h. The reaction was monitored by TLC (AcOEt/DCM 1:1) using the ninhydrin staining solution. The solvent was evaporated and the crude product was dissolved in H₂O/CH₃CN 1:1 and lyophilized. UPLC t_R (G 0-100% CH₃CN/H₂O in 2 min): 1.40 min; UPLC-MS t_R (G 0-100% CH₃CN/H₂O in 2 min): 1.25 min, [M+H⁺]_{expected}= 726.90, [M+H⁺]_{found}=726.70, HRMS (ESI): 726.40859 calcd. for C₃₉H₅₂N₉O₅; [M+H⁺]_{found}=726.40721; yield (synthesis + purification): 50%

Parallel artificial membrane permeability assay (PAMPA)

The PAMPA was used to measure the capacity of the peptides to cross membranes (such as the BBB) by passive diffusion. The effective permeability (P_e) of the compounds was determined at an initial concentration of 200 μ M. The buffer solution was prepared from a concentrated commercial one, supplied by pION. Following the manufacturer's instructions, system solution was adjusted to pH 7.4 using a 0.5 M NaOH solution. The peptides were dissolved in a mixture of buffer solution with 20% of 1-propanol used as co-solvent. The PAMPA sandwich was separated, and the donor well was filled with 195 μ L of the compound solution of interest. A magnetic stirrer was placed in each well. The acceptor plate was put into the donor plate, ensuring that the underside of the membrane was in contact with the buffer. Then, 4 μ L of a mixture of phospholipids from a porcine polar brain extract (20 mg/ml) in dodecane (composition: 12.6% phosphatidylcholine (PC), 33.1% phosphatidylethanolamine (PE), 18.5% phosphatidylserine (PS), 4.1% phosphatidylinositol (PI), 0.8% phosphatidic acid and 30.9% of other compounds) was added to the filter of each well, followed by 200 μ L of buffer solution. The plate was then covered and incubated at room temperature in a saturated humidity atmosphere for 4 h under orbital agitation at 25 μ m of unstirred water layer (UWL). After this period, 165 μ L/well of the solution from the donor and acceptor plates was transferred to the HPLC vials, except for the bicyclic compound, for which all the fractions were pooled. 100 μ L of each linear, stapled and cyclic acceptor samples and 80 μ L of the bicyclic acceptor were injected into the HPLC apparatus. Transport was also confirmed by HPLC-MS, which indicated that the integrity of the peptides was preserved. Regarding the donor and initial time samples, the linear compound was injected at 1 μ L, the linear stapled peptide at 20 μ L, the head-to-tail cyclic peptide at 10 μ L, and the bicyclic peptide at 5 μ L. The bicyclic acceptor was injected again at 1 and 5 μ L owing to the initial large absorbance obtained. The effective permeability after 4 h was calculated using *equation 1* and the percentage of transport using *equation 2*.

$$T(\%) = \frac{C_A(t)}{C_D(t_0)} \cdot 100 \quad \text{[Equation 1]}$$

$$P_e = \frac{-218.3}{t} \cdot \log \left[1 - \frac{2 \cdot C_A(t)}{C_D(t_0)} \right] \cdot 10^{-6} \text{ cm/s} \quad \text{[Equation 2]}$$

1
2
3 where t is time (h), $C_A(t)$ is the peptide concentration in the acceptor well at time t , and $C_D(t_0)$ is the
4 peptide concentration in the donor well at 0 h. Membrane retention (%R) was calculated from the
5 difference between the total starting amount of peptide and the amount of peptide in the donor and
6 acceptor wells at the end of the assay after 4 h.
7

8 **Stability in human serum**

9 Peptides at a final concentration of 3 mM were dissolved in HBSS and incubated at 37 °C in the presence
10 of 90% human serum for 24 h. At different incubation times (30 min, 1 h, 3 h, 6 h, 10 h, 12 h and 24 h),
11 50 μ L aliquots were treated with 200 μ L of MeOH to precipitate serum proteins. After 30 min of
12 centrifugation at 4 °C, the supernatant was filtered and then analysed by HPLC to calculate the
13 percentage of intact peptide in the sample.
14
15

16 **Cytotoxicity, XTT assay**

17 5000 HeLa cells were seeded in 96-well plates 24 h before starting the assay. After this period, cells with
18 peptides at 200 μ M and 500 μ M in DMEM (1 mg/ml glucose) supplemented with 10% serum were
19 incubated for 24 h. Then, medium with peptides was removed and the XTT reagent was added to a final
20 concentration of 0.5 mg/ml. After a 3 h incubation, absorbance was measured at 475 nm. The same
21 measure was performed after 6 h incubation. Cell viability was calculated by dividing the absorbance of
22 wells treated with a given peptide by the absorbance of the untreated wells. The 6h incubation values
23 were used for the calculations, since an absorbance higher than 2 is required to reach the plateau zone
24 of fluorescence. Measurements were performed in triplicate. As a negative control, cells were incubated
25 with medium and as positive control 1% of DMSO was introduced.
26
27
28

29 **RESULTS AND DISCUSSION:**

30
31 Encouraged by the notorious presence of halogenated tryptophans in natural products^{9,10}, we aimed to
32 study the effects of introducing this particular motif in a small size peptide sequence, containing five
33 amino acids.
34
35

36 **Design of the peptides**

37 Within the current study, the core sequence was selected based on positive results obtained with a
38 previously studied 'Phe analogue', i.e. H-Lys-Phe-Lys-Phe-D-Pro-OH. We selected a pentapeptide
39 scaffold to carry out the cyclization since this number of amino acids yields macrocycles with some
40 rigidity, after amide bond formation between the *N*- and *C*- termini. D-Proline was selected as *C*-
41 terminal amino acid (i.e., anchorage point to the resin) to favor cyclization in solution by inducing a turn
42 conformation³⁰. Lysine incorporation provided good results in terms of passive diffusion permeability
43 and poor membrane retention, as well as non-cytotoxicity in HeLa cells²⁵. In this study, the
44 phenylalanines were substituted by tryptophans that were suitably decorated with bromine, to yield
45 head-to-tail cyclized and brominated peptides. Herein, the incorporation of Trp could positively
46 influence peptide conformation and stability³¹. Moreover, the biaryl staple between two phenylalanines
47 was extensively studied in our group and could be successfully replaced with a staple involving positions
48 5-5, 6-6 or 7-7 of two tryptophans. It is also worth mentioning that Trp-containing peptides with
49 antimicrobial, and hence possibly membrane interfering, properties were reported^{22,32}.
50
51

52 Head-to-tail cyclic pentapeptides displaying two tryptophans, brominated at the same position (5,5; 6,6
53 or 7,7 of the indole ring) were synthesized using standard Fmoc/*t*Bu solid-phase peptide synthesis. We
54 decided to introduce two identically substituted bromotryptophans to evaluate the potential effect of
55 the indole substitution. The selected core sequence was exactly the same for all the peptides, i.e. H-Lys-
56
57
58
59
60

Trp-Lys-Trp-D-Pro-OH. Cyclization, as well as incorporation of a D-amino acid may prevent proteolytic degradation of the peptidic scaffold, a common disadvantage of peptide therapeutics.

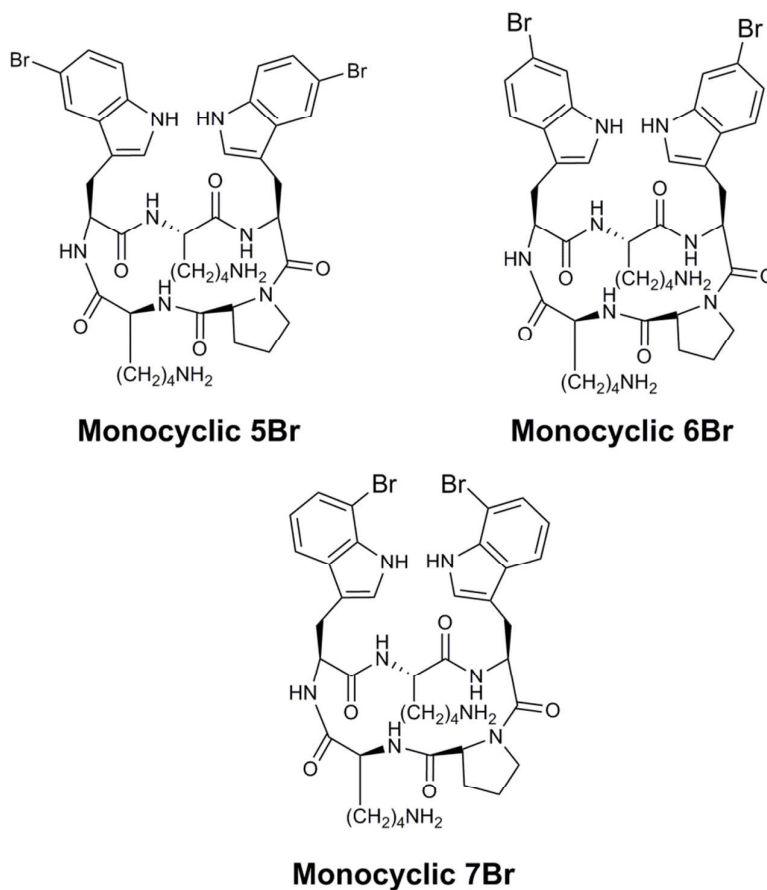
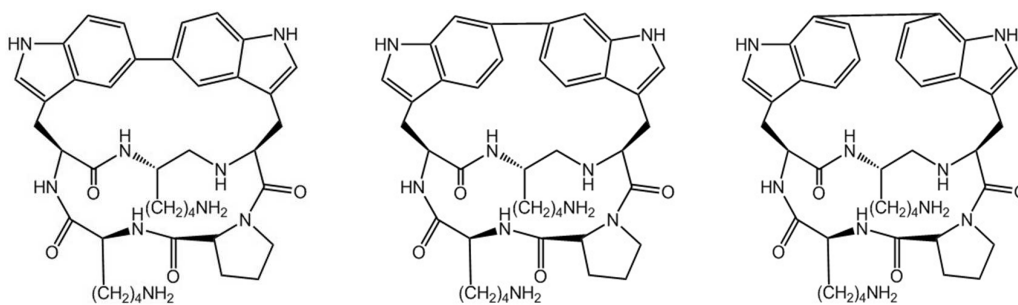


FIGURE 1. Cyclic pentapeptides with (5,5), (6,6) and (7,7) bromotryptophans, named Monocyclic 5Br, Monocyclic 6Br and Monocyclic 7Br, respectively.

To determine the impact of bromine substitution, two control peptides were also prepared: cyclo(Lys-Trp-Lys-Trp-D-Pro) and H-Lys-Trp-Lys-Trp-D-Pro-OH; a head-to-tail cyclized peptide and a linear version with non-brominated tryptophans, resp. Furthermore, we carried out the synthesis of bicyclic peptides using the halogenated tryptophans as precursors to undergo Suzuki-Miyaura conversions in view of a Trp-Trp crosslink.



Bicyclic 5,5**Bicyclic 6,6****Bicyclic 7,7**

FIGURE 2. Bicyclic pentapeptides with stapling between positions 5-5, 6-6 or 7-7 of tryptophan.

Bicyclic peptides have demonstrated to be privileged scaffolds that display improved pharmacological properties and prominent activities towards relevant biological targets³³. Using our previously developed methodology for the preparation of bicyclic biaryl-containing pentapeptides¹¹, we decided to prepare bicyclic peptides stapled between two tryptophans, at positions 5-5, 6-6 and 7-7 of the indole rings, taking advantage of the Suzuki-Miyaura reaction.

Briefly, the bicyclic peptides were prepared using a modified Fmoc/*t*Bu strategy and applying Wang resin as solid support. At the tripeptide level, on-resin borylation was carried out using Trt as the temporary protecting group and *p*NZ as the 'permanent' one. Once the tryptophan was borylated through a Miyaura borylation, Trt was removed and the peptide was elongated on the solid support. The pentapeptide was then subjected to an on-resin Suzuki-Miyaura reaction, having Boc as temporary protecting group and *p*NZ as the more permanent orthogonal one. Cleavage of the stapled precursor was carried out providing the peptide with side chain protecting groups on both lysines. After performing a pre-purification of the peptide and subsequent head-to-tail cyclization, removal of *p*NZ was performed in solution yielding the desired stapled bicyclic peptide (Figure 3).

Furthermore, this new construct presents an interesting motif (i.e., two stapled tryptophans) that could be used when trying to target surface recognition, as was demonstrated for the biaryl feature^{11,12}, due to the possible π -cation interactions with the tryptophan staple.

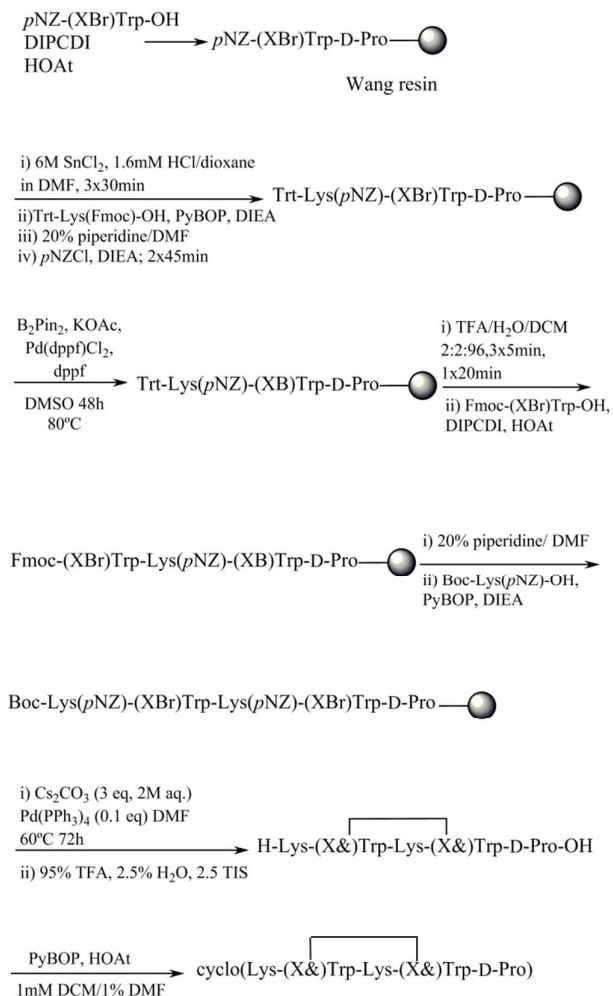


FIGURE 3. General methodology to synthesize 'Trp-Trp stapled' peptides based on the general methodology described by García-Pindado *et al.*¹¹ X=5,6,7 denotes the position of Br in the indole of Trp. '&' corresponds to the cyclized positions (5-5, 6-6 or 7-7) between the two tryptophans.

Once the compounds were prepared, we aimed to evaluate their properties in terms of passive diffusion permeability, resistance towards proteolytic degradation and cytotoxicity.

Passive diffusion permeability

Owing to the special interest in peptide-based CNS drugs, these compounds were studied by PAMPA (Parallel Artificial Membrane Permeability Assay). The assay allows unveiling the potential passive diffusion permeability of these compounds across a mimic of the blood-brain barrier (BBB). We tested the three bromine-containing cyclic peptides and the bicyclic ones together with the two controls, obtaining the following results (Table 1, Figure 4). Propranolol was used as positive control of the assay. Cyclization of the linear peptide gave way to an enhanced permeability, also when performed in conjunction with the introduction of bromine at any of the studied positions of the indole ring of tryptophan.

P_e represents the permeability of the investigated compounds across the artificial BBB, while T stands for the percentage of transport of the peptides in the assay. These parameters allow to understand whether the tested compound show a relevant permeability through passive diffusion. An effective permeability higher than $1 \cdot 10^{-6}$ cm/s correlates with a good transport prediction *in vivo*³⁴.

Upon comparison of the four head-to-tail cyclic peptides we observed an enhanced permeability when incorporating 5Br-Trp and 6Br-Trp, while in case of 7Br-Trp the permeability was slightly lower. These results demonstrated that halogens can be incorporated in a peptide and, in selected cases, this improves passive diffusion permeability. This tendency was previously reported by Malakoutikhak *et al.*³⁵ Nonetheless, it is worth noting the significant differences in the transport depending on the halogen position at the tryptophans, thus implying subtle changes in the properties of the bromine-containing cyclic peptides.

TABLE 1. Effective permeability and transport of the cyclic brominated peptides, bicyclic peptides, the cyclo(Lys-Trp-Lys-Trp-D-Pro) reference, and linear H-Lys-Trp-Lys-Trp-D-Pro-OH after 4 h assayed by PAMPA.

Compound	$P_e(\times 10^6)$ cm/s	T(%) (4 h)
Monocyclic 5Br: cyclo(K(5Br)WK(5Br)Wp)	4.7 ± 0.4	8.9 ± 0.7
Monocyclic 6Br: cyclo(K(6Br)WK(6Br)Wp)	4.6 ± 0.1	8.9 ± 0.2
Monocyclic 7Br: cyclo(K(7Br)WK(7Br)Wp)	1.3 ± 0.6	2.6 ± 1.1
Head-to-tail cyclic: cyclo(KWKWp)	2.7 ± 0.2	5.3 ± 0.2
Linear: H-KWKWp-OH	$0.1 \pm 3 \cdot 10^{-3}$	0.2 ± 10^{-2}
Bicyclic 5,5: cyclo(K(5&)WK(5&)Wp)	3.8 ± 1.9	7.4 ± 2.4
Bicyclic 6,6: cyclo(K(6&)WK(6&)Wp)	3.7 ± 0.6	7.2 ± 1.0
Bicyclic 7,7: cyclo(K(7&)WK(7&)Wp)	7.6 ± 1.0	13.7 ± 1.5

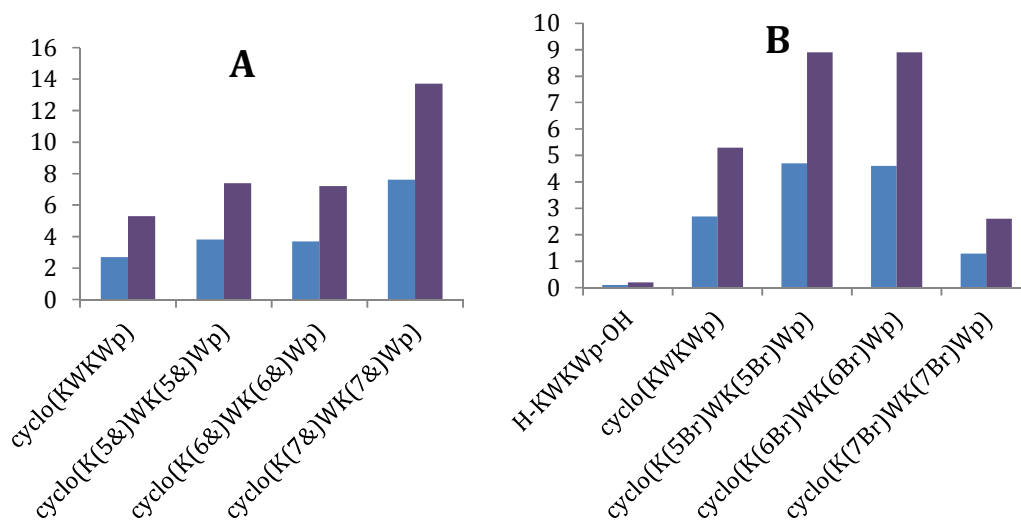


FIGURE 4. Effective permeability and transport after 4h in PAMPA. A) Comparison of cyclo(KWKWp) with the bicyclic peptides and B) Comparison of cyclo(KWKp) and linear H-KWKp-OH with the brominated peptides. In blue $P_e(\times 10^6)$ cm/s and in purple T(%) (4h).

The bicyclic peptides did show a different behavior in terms of permeability. While bicyclic 5,5 and 6,6 displayed a slightly lower value of permeability, as compared to the monocyclic versions, bicyclic 7,7 demonstrated to have the highest BBB permeability. Therefore, we could not correlate the incorporation of the stapled constraint to an increased transport. The differences can arise from the constraint of the structures between the aromatic residues involved in the stapling.

Regarding membrane retention, we did not observe a significant value for any of the head-to-tail cyclic versions. On the contrary, the linear control was mostly retained on the membrane. This result was not surprising since tryptophans as well as *N*- and *C*- termini are described to interact with membranes. Therefore, cyclization is suggested to be a tool to avoid high membrane retention **due to the absence of these termini. However, this strategy could lead to lower transport of the final compounds owing to the loss of both polar groups.**

Cell viability assay

We were especially concerned by the potential cytotoxicity of these peptides due to the presence of two bromines. Therefore, an XTT assay was performed at two different concentrations (200 μ M and 500 μ M) in HeLa cells.

As shown in Figure 5, no cytotoxicity could be directly attributed to the presence of bromine incorporation since complete cell survival was detected for both Monocyclic 6Br and Monocyclic 7Br peptides. Nevertheless, a relevant cell death was observed at 500 μ M for Cyclic 5Br peptide. Again, we observed a significantly different behavior of the bromine-containing peptides depending on the halogen substitution. Due to the obtained results, we discarded Monocyclic 5Br for the following studies.

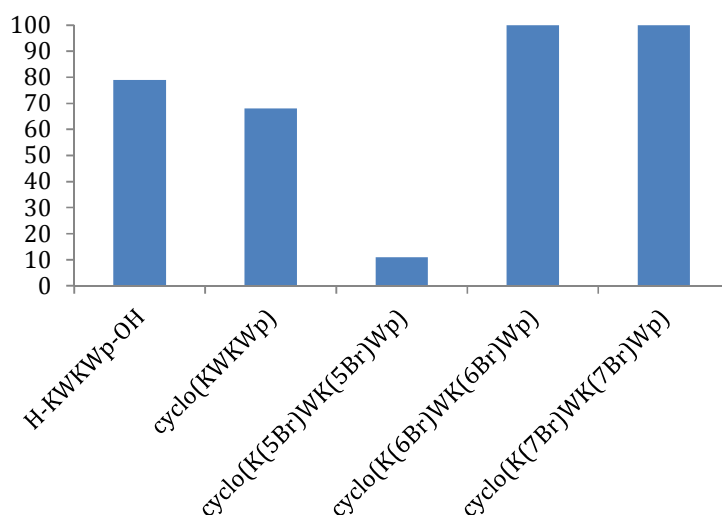


FIGURE 5. Cell viability assay at a concentration of 500 μ M of the peptides.

The high cytotoxicity of the Monocyclic 5Br peptide was an unexpected result that could be attributed to an altered conformation of the sequence. Depending on the brominated positions at the indole, the final peptide conformation can be significantly different. Computational studies on conformation distribution would be interesting in order to improve our knowledge about this result. It is also relevant to highlight that natural halogenation or hydroxylation of tryptophan occurs in both the 5- and 6-positions.

Protease resistance in human serum

As previously mentioned, head-to-tail cyclization is a well-known strategy used to improve peptide biostability in human serum. After having prepared these compounds, it became interesting to determine which effect the incorporation of bromine shows in terms of protease resistance. Therefore, the peptides were incubated in human serum for 24 h and the different time-point aliquots were analyzed by HPLC to determine half-life times. We observed that all of the head-to-tail cyclized peptides,

including the cyclic control, were stable for more than 3 h in human serum. Even though the incorporation of bromine could not be linked to increased serum stability, the insertion of bromotryptophan amino acids did not lead to a more rapid degradation of the cyclic peptide analogues. Here, the linear peptide was used as positive control of the assay, displaying a half-life close to 1 h.

Earlier studies of our group²⁶ demonstrated that the incorporation of an extra cyclization increases considerably the biostability in human serum. The published results demonstrated outstanding values of protease resistance, which can be quite beneficial. Nonetheless, owing to the minimum amount of the bicyclic peptides obtained, these were not subjected to stability assays.

CONCLUSIONS

This piece of work illustrates how the incorporation of bromotryptophan amino acids in cyclic peptides enables to improve passive diffusion permeability devoid of cytotoxicity, and presents an adequate resistance towards protease degradation. Not only can these compounds be of interest for biological purposes, but also the bromotryptophan motif can be used to prepare stapled bicyclic peptides, known as privileged scaffolds for recognition of protein surfaces.

ACKNOWLEDGEMENTS

This work was supported by MINECO-FEDER (BIO2016-75327-R) and the Generalitat de Catalunya (XRB and 2014-SGR-521). Júlia García was supported by an FPU grant (AP2012-6464). IRB Barcelona is the recipient of a Severo Ochoa Award of Excellence from MINECO. The IWT Flanders and Janssen Pharmaceutica are thanked for providing financial support of T.W. B.U.W.M ad S.B. thank the Research Foundation Flanders (FWO Vlaanderen; Scientific Research Network (WOG)).

¹ Segraves, N. L.; Crews, P.; *J. Nat. Prod.* **2005**, *68*, 1484-1488.

² Petersen, F. N. R.; Jensen, M. O.; Nielsen, C. H.; *Biophysical Journal* **2005**, *89*, 3985-3996.

³ Schiffer, M.; Chang, C. -H.; Stevens, F. J.; *Protein Eng.* **1992**, *5*, 213-214.

⁴ Yau, W. -M.; Wimley, W. C.; Gawrish, K.; White, S. H.; *Biochemistry* **1998**, *37*, 14713-14718.

⁵ Ma, J. C.; Dougherty, D. A.; *Chem. Rev.* **1997**, *97*, 1303-1324.

⁶ Gromiha, M. M.; *Polymer* **2005**, *46*, 983-990.

⁷ Yang, B.; Wright, J.; Eldefrawi, M. E.; Pou, S.; MacKerell Jr., A.D.; *J. Am. Chem. Soc.* **1994**, *116*, 8722-8732.

⁸ Harries, W. E. C.; Khademi, S.; Stroud, R. M.; *International Congress Series* **2007**, *1304*, 15-21.

⁹ Arnison *et al.* *Nat. Prod. Rep.* **2013**, *30*, 108-160.

¹⁰ Okada, M.; Sugita, T.; Abe, I.; *Beilstein JOC* **2017**, *13*, 338-346.

¹¹ Schramma, K. R.; Seyedsayamdost, M. R.; *ACS Chem. Biol.* **2017**, *12*, 922-927.

¹² Ortega, M. A.; Cogan, D. P.; Mukherjee, S.; Garg, N.; Li, B.; Thibodeaux, G. N.; Maffioli, S.; Donadio, S.; Sosio, M.; Escano, J.; Smith, L.; Nair, S. K.; van der Donk, W. A.; *ACS Chem. Biol.* **2017**, *12*, 548-557.

¹³ Hoesl, M. G.; Oehm, S. S.; Durkin, P.; Darmon, E.; Peil, L.; Aerni, H.-R.; Rappsilber, J.; Rinehart, J.; Leach, D.; Söll, D.; Budisa, N.; *Angew. Chem. Int. Ed.* **2015**, *54*, 10030-10034.

¹⁴ Kuthning, A.; Durkin, P.; Oehm, S.; Hoesl, M. G.; Budisa, N.; Süßmuth, R.; *Scientific Reports* **2016**, *6*, #33447.

¹⁵ Koniev, O.; Wagner, A.; *Chem. Soc. Rev.* **2015**, *44*, 5495-5551.

¹⁶ Hansen, M. B.; Hubálek, F.; Skrydstrup, T.; Hoeg-Jensen, T.; *Chem. Eur. J.* **2016**, *22*, 1572-1576.

¹⁷ Seki, Y.; Ishiyama, T.; Sasaki, D.; Abe, J.; Sohma, Y.; Oisaki, K.; Kanai, M.; *JACS* **2016**, *318*, 10798-10801.

¹⁸ May, J. P.; Fournier, P.; Patrick, B. O.; Perrin, D. M.; *Chem. Eur. J.* **2008**, *14*, 3410-3417.

¹⁹ Schuresko, L. A.; Lockey, R. S.; *Angew. Chem.. Int. Ed.* **2007**, *46*, 3547-3549.

²⁰ Nettleton, D. E.; Doyle, T. W.; Krishnan, B.; *Tetrahedron Lett.* **1985**, *26*, 4011-4014.

²¹ El-Banna, N.; Winkelmann, G.; *J. Appl. Microbiol.* **1998**, *85*, 69-78.

²² Smith, D. R. M.; Willemse, T.; Gkotsi, D. S.; Schepens, W.; Maes, B. U. W.; Ballet, S.; Goss, R. J. M.; *Org. Lett.* **2014**, *16*, 2622-2625.

²³ Bartoccini, F.; Bartolucci, S.; Mari, M.; Piersanti, G.; *Org. Biomol. Chem.* **2016**, *14*, 10095-10100.

²⁴ Agostini, F.; Völler, J.-S.; Kokschi, B.; Acevedo-Rocha, C. G.; Kubyskhin, V.; Budisa, N.; *Angew. Chem. Int. Ed.* **2017**, *56*, 9680-9703.

- 1
2
3
4
5
6
7
8
9
10
11
12
13
14
15
16
17
18
19
20
21
22
23
24
25
26
27
28
29
30
31
32
33
34
35
36
37
38
39
40
41
42
43
44
45
46
47
48
49
50
51
52
53
54
55
56
57
58
59
60
-
- ²⁵ Acebes, S.; Ruiz-Dueñas, F. J.; Toubes, M.; Sáez-Jiménez, V.; Pérez-Boada, M.; Lucas, M. F.; Martínez, A. T.; Guallar, V.; *J. Phys. Chem.* **2017**, *121*, 3946-3954.
- ²⁶ García-Pindado, J.; Royo, S.; Teixidó, M.; Giralt, E.; *J. Pept. Sci.* **2017**, *23*, 294-302.
- ²⁷ Willemse, T.; Schepens, W.; van Vlijmen, H. W. T.; Maes, B. U. W.; Ballet, S.; *Catalysts* **2017**, *7*, 74.
- ²⁸ Willemse, T.; van Imp, K.; Goss, R. J. M.; van Vlijmen, H. W. T.; Schepens, W.; Maes, B. U. W.; Ballet, S.; *ChemCatChem* **2015**, *7*, 2055-2070.
- ²⁹ Spengler, J.; Jiménez, J. C.; Burger, K.; Giralt, E.; Albericio, F.; *J. Peptide Res.* **2005**, *65*, 550.
- ³⁰ Klose, J.; Ehrlich, A.; Bienert, M.; *Letters in Peptide Science* **1998**, *5*, 129-131.
- ³¹ Mahalakshmi, R.; Sengupta, A.; Raghothama, S.; Shamala, N.; Balaram, P.; *Biopolymers* **2007**, *88*, 36-53.
- ³² Bittner, S.; Scherzer, R.; Harlev, E.; *Amino Acids* **2007**, *33*, 19-42.
- ³³ Feliu, L.; Planas, M.; *Int. J. Pept. Res. Ther.* **2005**, *11*, 53.
- ³⁴ Di, L.; Kerns, E. H.; Fan, K.; McConnell, O. J.; Carter, G. T.; *Eur. J. Med. Chem.* **2003**, *38*, 223-232.
- ³⁵ Malakoutikhah, M.; Guixer, B.; Arranz-Gibert, P.; Teixidó, M.; Giralt, E.; *ChemMedChem.* **2014**, *9*, 1594-1601.

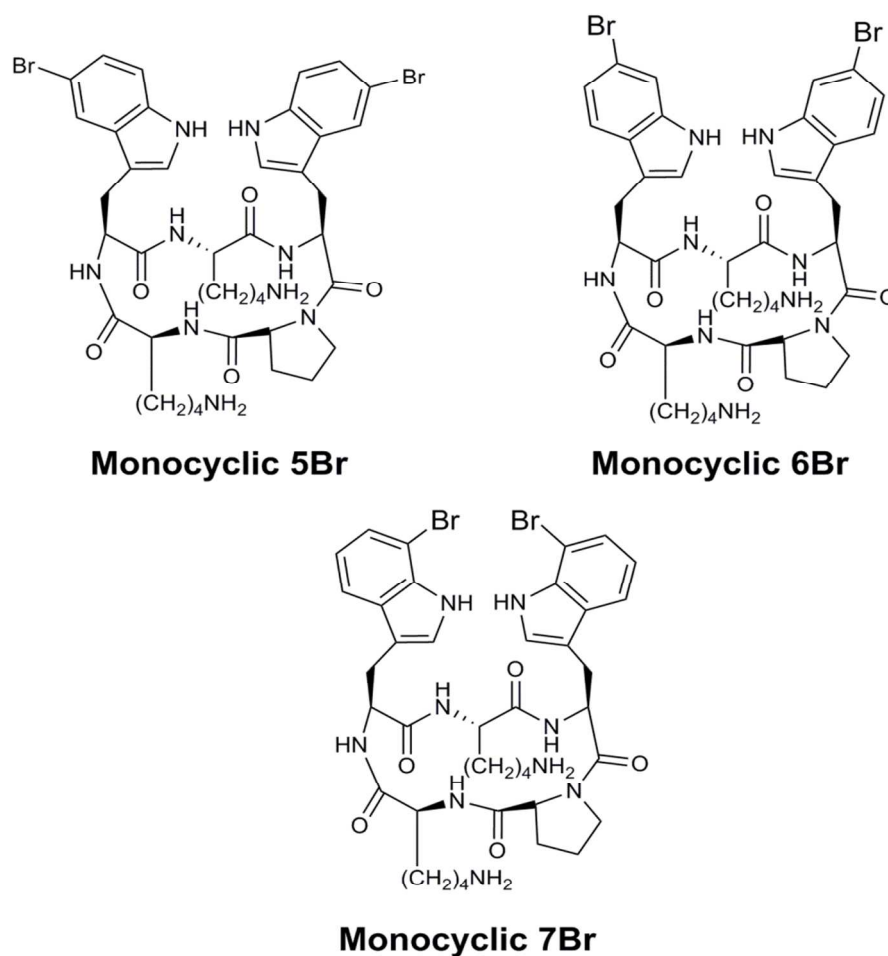


FIGURE 1. Cyclic pentapeptides with (5,5), (6,6) and (7,7) bromotryptophans, named Monocyclic 5Br, Monocyclic 6Br and Monocyclic 7Br, respectively.

455x455mm (300 x 300 DPI)

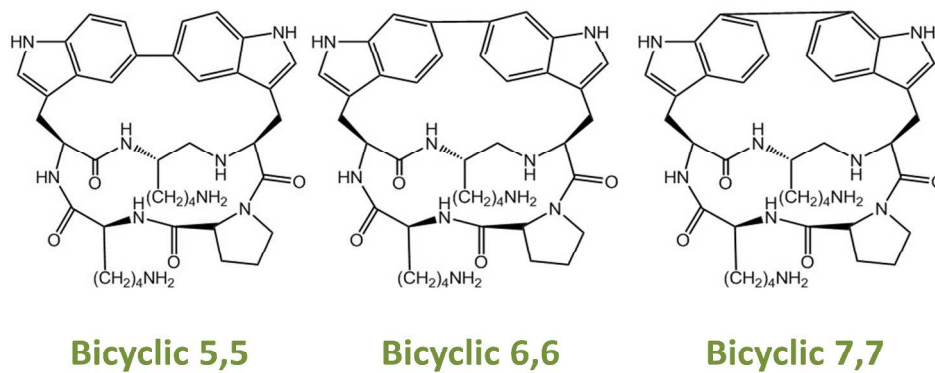
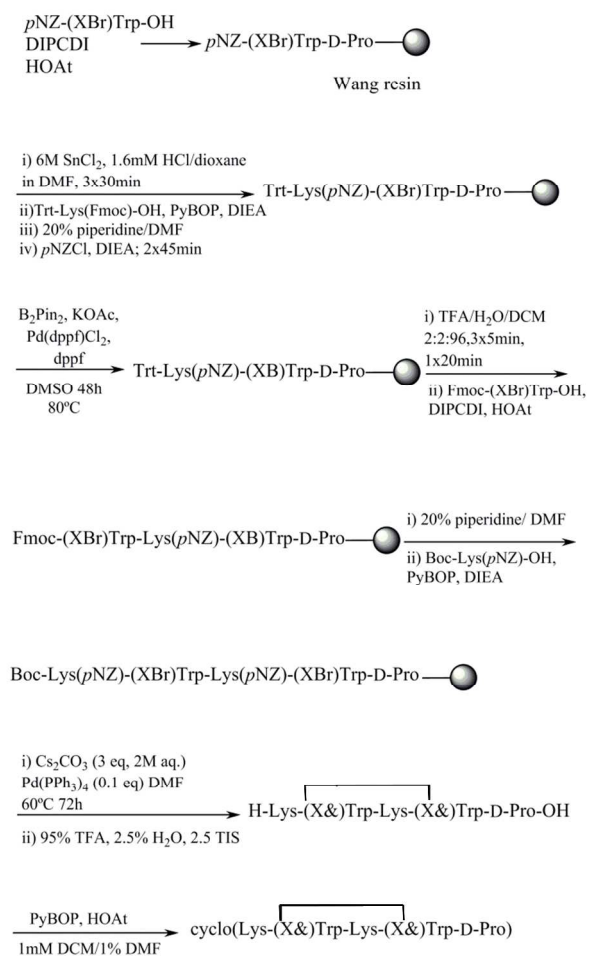


FIGURE 2. Bicyclic pentapeptides with stapling between positions 5-5, 6-6 or 7-7 of tryptophan.

455x455mm (300 x 300 DPI)



39
40
41
42
43
44
45
46
47
48
49
50
51
52
53
54
55
56
57
58
59
60

FIGURE 3. General methodology to synthesize 'Trp-Trp stapled' peptides based on the general methodology described by García-Pindado *et al.* 11 X=5,6,7 denotes the position of Br in the indole of Trp. '&' corresponds to the cyclized positions (5-5, 6-6 or 7-7) between the two tryptophans.

455x455mm (300 x 300 DPI)

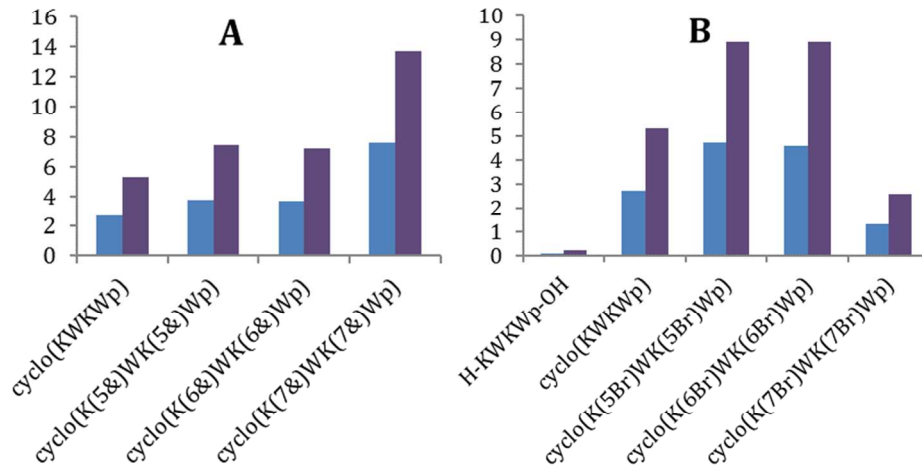


FIGURE 4. Effective permeability and transport after 4h in PAMPA. A) Comparison of cyclo(KWKWp) with the bicyclic peptides and B) Comparison of cyclo(KWKp) and linear H-KWKp-OH with the brominated peptides. In blue Pe(x10⁶) cm/s and in purple T(%) (4h).

455x455mm (300 x 300 DPI)

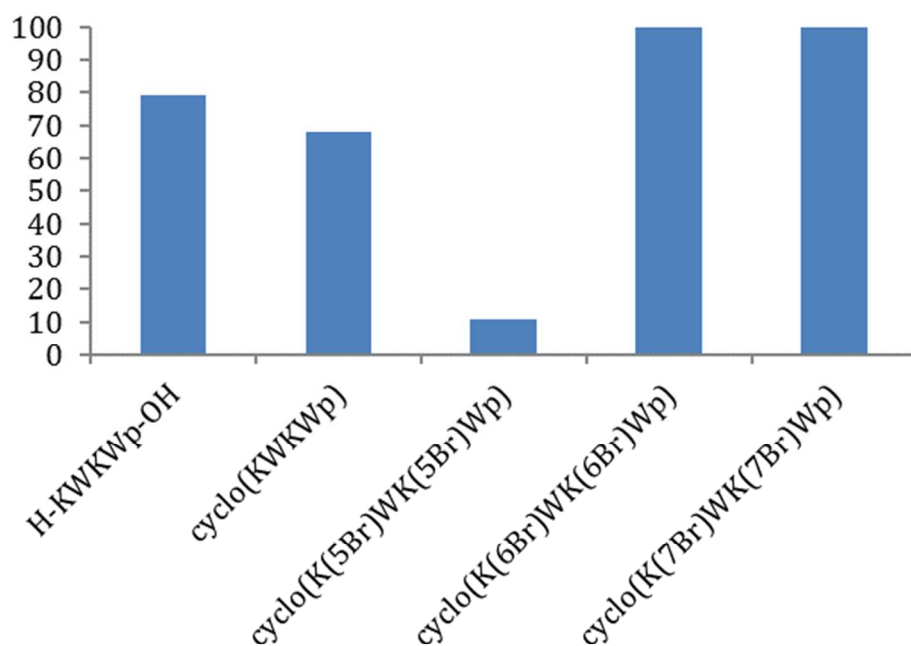


FIGURE 5. Cell viability assay at a concentration of 500 μM of the peptides.

455x455mm (300 x 300 DPI)

Compound	$P_e(\times 10^6)$ cm/s	T(%) (4 h)
Monocyclic 5Br: cyclo(K(5Br)WK(5Br)Wp)	4.7 ± 0.4	8.9 ± 0.7
Monocyclic 6Br: cyclo(K(6Br)WK(6Br)Wp)	4.6 ± 0.1	8.9 ± 0.2
Monocyclic 7Br: cyclo(K(7Br)WK(7Br)Wp)	1.3 ± 0.6	2.6 ± 1.1
Head-to-tail cyclic: cyclo(KWKWp)	2.7 ± 0.2	5.3 ± 0.2
Linear: H-KWKWp-OH	$0.1 \pm 3 \cdot 10^{-3}$	0.2 ± 10^{-2}
Bicyclic 5,5: cyclo(K(5&)WK(5&)Wp)	3.8 ± 1.9	7.4 ± 2.4
Bicyclic 6,6: cyclo(K(6&)WK(6&)Wp)	3.7 ± 0.6	7.2 ± 1.0
Bicyclic 7,7: cyclo(K(7&)WK(7&)Wp)	7.6 ± 1.0	13.7 ± 1.5

TABLE 1. Effective permeability and transport of the cyclic brominated peptides, bicyclic peptides, the cyclo(Lys-Trp-Lys-Trp-D-Pro) reference, and linear H-Lys-Trp-Lys-Trp-D-Pro-OH after 4 h assayed by PAMPA.

455x455mm (300 x 300 DPI)