

# THE CRAI OF THE UNIVERSITY OF BARCELONA

Learning and Research  
Resources Center (CRAI)





# Summary

---

**01**  
**The University  
of Barcelona**

---

---

**02**  
**How the CRAI  
was formed**

---

---

**03**  
**CRAI libraries  
and CRAI units**

---

---

**04**  
**The UB and CRAI  
in figures**

---

---

**05**  
**CRAI Identity**

---

---

**06**  
**Strategy  
and Quality**

---



Image: Mundet Campus CRAI Library



01

# The University of Barcelona





# The University of Barcelona offers its users...



Image: Historic Building of the University of Barcelona



**Library  
services**



**Teaching  
support**



**Research  
support**

**16 CRAI libraries and 7 CRAI transversal  
units work to make it possible**





02

# How the CRAI was formed



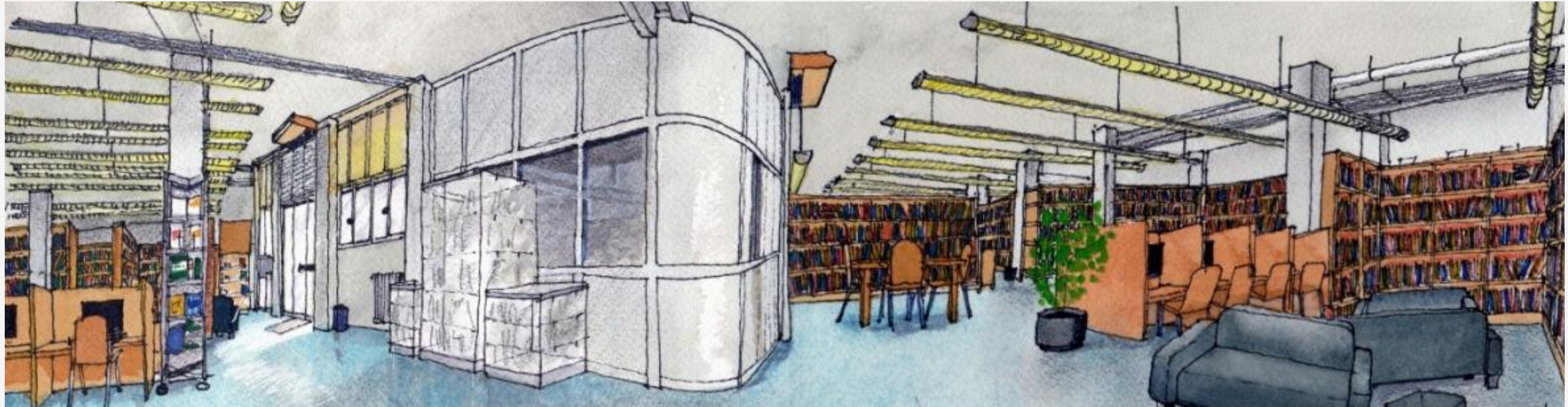


Image: Drawing of the Information and Audiovisual Media CRAI Library. Antoni Morell i Mestre

## The beginnings

The CRAI was created at the beginning of 2004 to adapt the UB libraries to the requirements of the European Higher Education Area (EHEA) and the European Research Area (ERA), which is based on **learning, research, development** and **innovation**.

In this way, the library, teaching support and research services are integrated into a single space, facilitating access to information and new technologies in a more dynamic environment adapted to the needs of users.





03

# CRAI libraries and CRAI units



# CRAI libraries

Of the **16 CRAI libraries**, **14** hold collections for specific faculties or campuses, and **2** are **heritage libraries** (the Rare Book and Manuscript CRAI Library and the Pavelló de la República CRAI Library).

Bellvitge Campus



Biology



Clínic Campus



Earth Sciences



Economics and Business



Fine Arts



Information and Audiovisual Media



Law



Mathematics and Computer Science



Mundet Campus



Pavelló de la República



Pharmacy and Food Science



Philology and Communication



Philosophy, Geography and History



Physics and Chemistry



Rare Book and Manuscript







# Heritage libraries

## Rare Book and Manuscript CRAI Library

This library holds the University's collection of rare books and manuscripts, as well as part of the general heritage collection. The valuable works in the collection come from the expropriation of Barcelona's convent libraries in 1836, and from several donations.

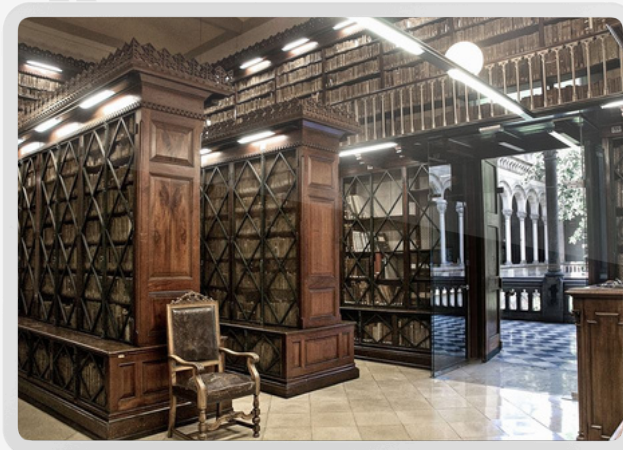


Image: Rare Book and Manuscript CRAI Library

## Pavelló de la República CRAI Library

This library houses one of the most important collections and archives in the world about the Spanish Second Republic, the Civil War, exile, Francoism and Spain's democratic transition. The building is a copy of the Pavelló de la República constructed for the 1937 World's Fair in Paris.

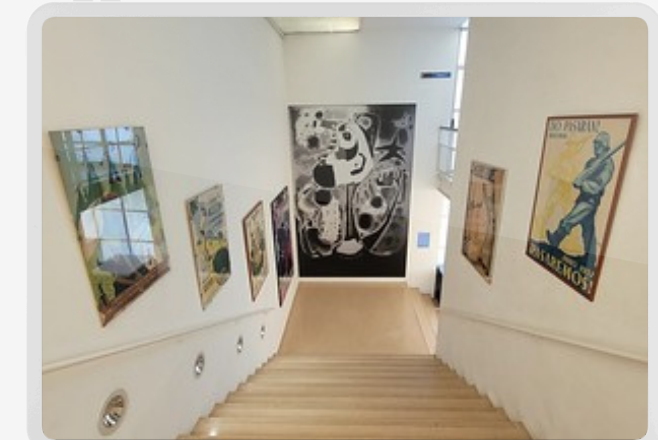


Image: Pavelló de la República CRAI Library



# Rare Book and Manuscript CRAI Library Collections

The unique collection of this heritage library supports the UB's students, teachers and researchers, as well as the academic community of other national and international institutions. It consists of:

**11,270 engravings**



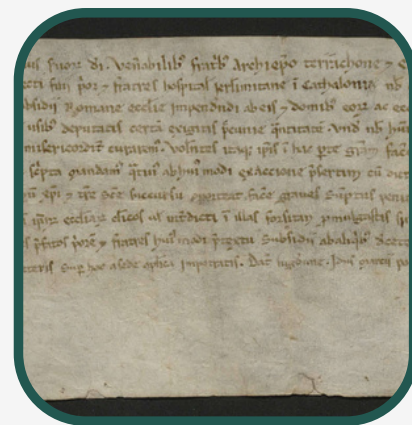
**1,185 incunabula**



**2,180 manuscripts**



**890 parchments**



**130,000 printed books  
(dating from the 16th century to 1829)**







# CRAI Pavelló de la República Library Collections

The library contains an extensive collection of historically important documents and archives:

**230**

**archive collections**



**2,200**

**audiovisual items**



**11,000**

**journal titles**



**110,000**

**monographs and pamphlets**



**420**

**pennants**



**14,200**

**posters**



**1,000 stamps and**

**300 banknotes**

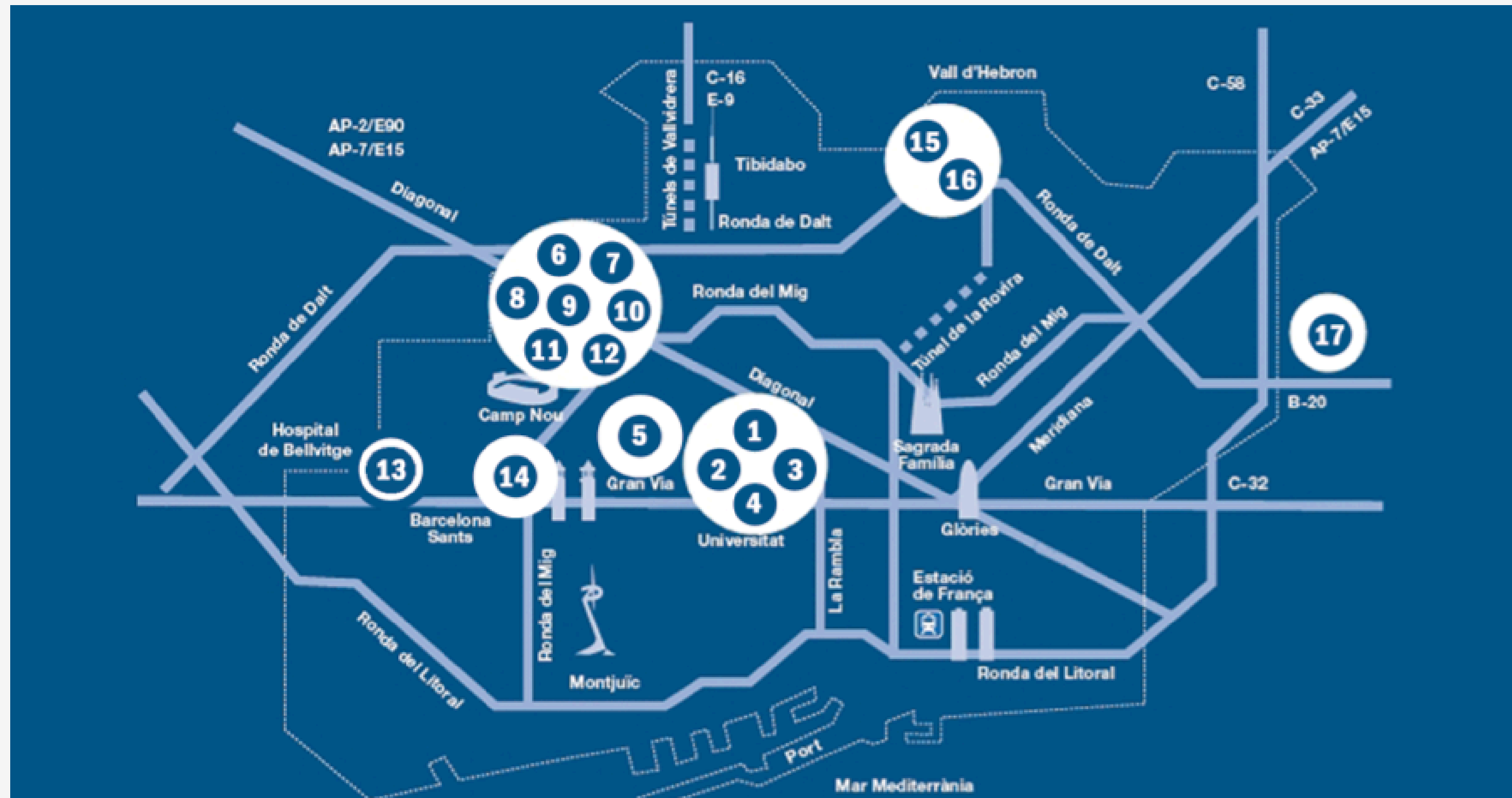


**20,000**

**stickers**



# Location of CRAI libraries



- |   |  |   |  |
|---|--|---|--|
| 1. Rare Book and Manuscript CRAI Library          | 5. Clínic Campus CRAI Library          | 9. Physics and Chemistry CRAI Library                                     | 13. Bellvitge Campus CRAI Library                                |
| 2. Philology and Communication CRAI Library       | 6. Economics and Business CRAI Library | 10. Biology CRAI Library  | 14. Information and Audiovisual Media CRAI Library               |
| 3. Mathematics and Computer Science CRAI Library  | 7. Law CRAI Library                    | 11. Fine Arts CRAI Library  | 15. Mundet Campus CRAI Library                                   |
| 4. Philosophy, Geography and History CRAI Library | 8. Earth Sciences CRAI Library         | 12. Pharmacy and Food Science CRAI Library -<br>Diagonal Knowledge Campus | 16. Pavelló de la República CRAI Library                         |
|   |  |   | 17. Pharmacy and Food Science CRAI Library -<br>Torribera Campus |

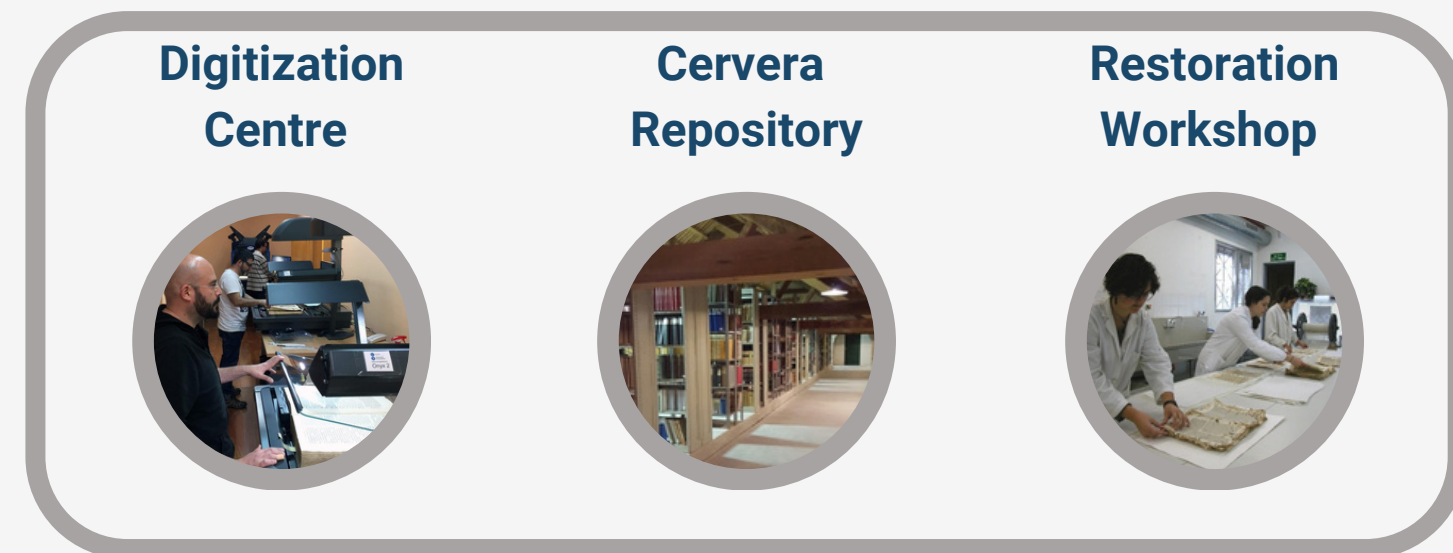




# CRAI units

The CRAI is made up of a **Director**, **7 transversal units**, the **Plant Biodiversity Resource Centre (CeDocBiV)** and the **16 CRAI libraries**.

The Collection Management Unit manages the **Digitization Centre (CEDI)**, the **Cervera Repository** and the **Restoration Workshop**.



**Director**



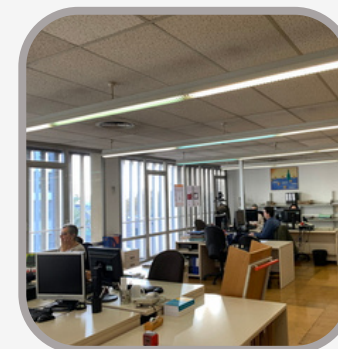
**CeDocBiV**



**Administration**



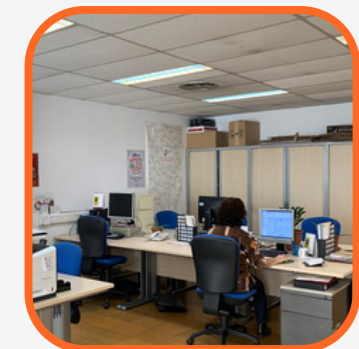
**Collection Management**



**Project**



**Research**



**Teaching**



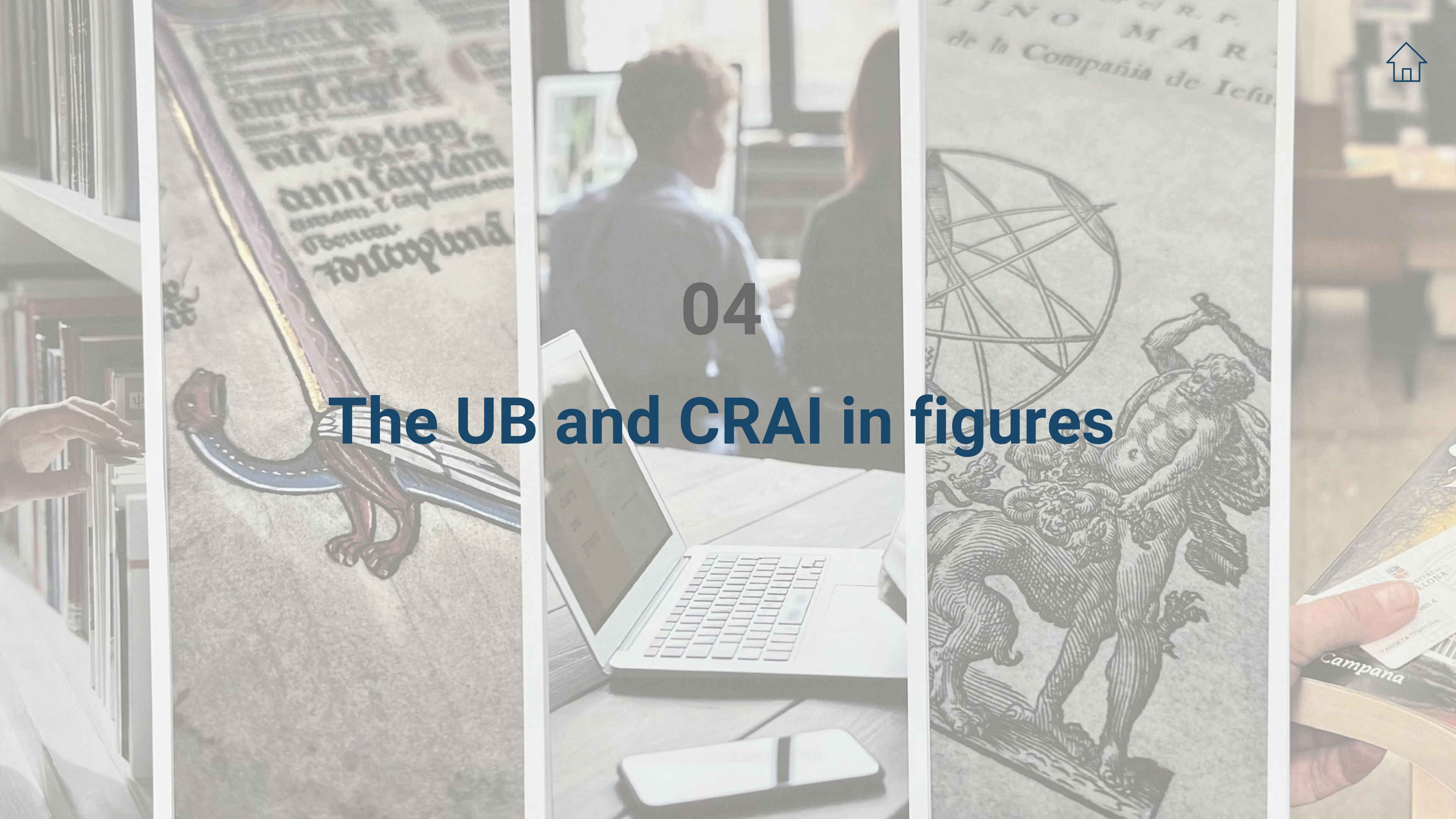
**Technical Processing**



**User Services**







04

# The UB and CRAI in figures





# The University of Barcelona in figures



## Structure

**17** faculties and **10** affiliated centres  
**666,990 m<sup>2</sup>** of constructed area



## Studies

**74** bachelor's degrees  
**170** university master's degrees  
**47** doctoral programmes  
**1.147** postgraduate courses



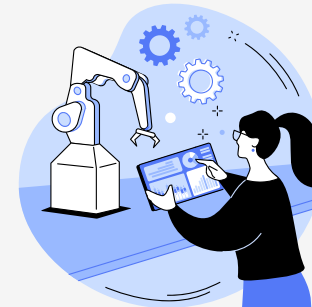
## Groups

**6,479** teachers and researchers  
**2,669** PTGAS members  
**14,181** UB Alumni members  
**41,020** bachelor's degree students  
**5,622** university master's degree students  
**5,238** trainee researchers  
**11,920** postgraduate students



## Budget and RDI

**+ €529 m** total budget  
**+ €196 m** in research funds secured



## Research data

**7,768** scientific publications  
**745** doctoral theses read  
**241** research groups  
**1,443** active research projects



## Internationalization

**11,453** international students  
**128** student nationalities  
**2,266** international students at the UB  
**1,502** UB students at foreign universities and institutions  
**3,027** agreements with foreign universities and institutions  
**501** international teachers and researchers



# The CRAI in figures



## CRAI staff

**232** librarians and technical staff  
**68** interns



## Budget

**€5,641,679 m** invested in information resources



## Facilities

**38,571 m<sup>2</sup>** of constructed area  
**6,706** seats  
**3,864** connection points  
**97** workrooms with **749** spaces  
**12** computer rooms with **258** spaces



## Services

**6,558** interlibrary loan requests processed  
**1,505,574** article downloads  
**466,570** e-book searches and downloads  
**1,959,437** catalogue queries  
**13,617** training course attendees  
**4,283** queries resolved by the User support service (SAU)



## Information resources

**959,608** e-books  
**120,967** e-journals  
**323** databases  
**1,628,822** books  
**36,660** journals



## Open science

**42,737** journal articles in the institutional repository  
**1,224** grants to publish in open access  
**80,502** open access documents published  
**11,461** doctoral theses in the institutional repository





05

# CRAI Identity





# Our identity

At the CRAI we work with a vocational commitment to **cooperation** and **service**, adapting innovatively to the emergence of new technology for the benefit of our users and institutions, seeking to achieve **excellence** in the provision of **quality services**.



Image: CRAI staff teaching a training course at the Faculty of Economics and Business

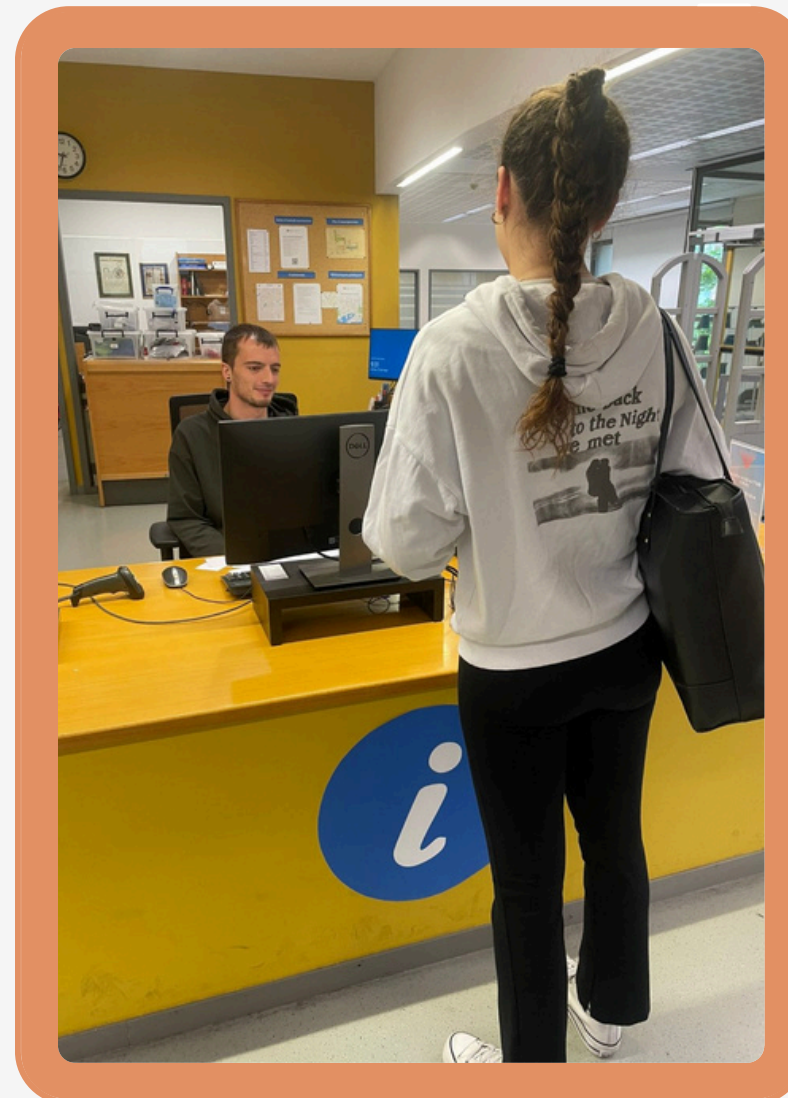


Image: User support at the Philosophy, Geography and History CRAI Library



Image: Exhibition at the Mundet Campus CRAI Library





# We are



## Advisers

We provide information and support for the dissemination of scientific knowledge.

campus  
virtual

ORCiD  
Connecting research and researchers

researchid

# SIRA

Sistema d'Informació de Recerca i Avaluació



# We are



## Open Science

We promote open access and open science, disseminating the scientific knowledge generated at the UB.





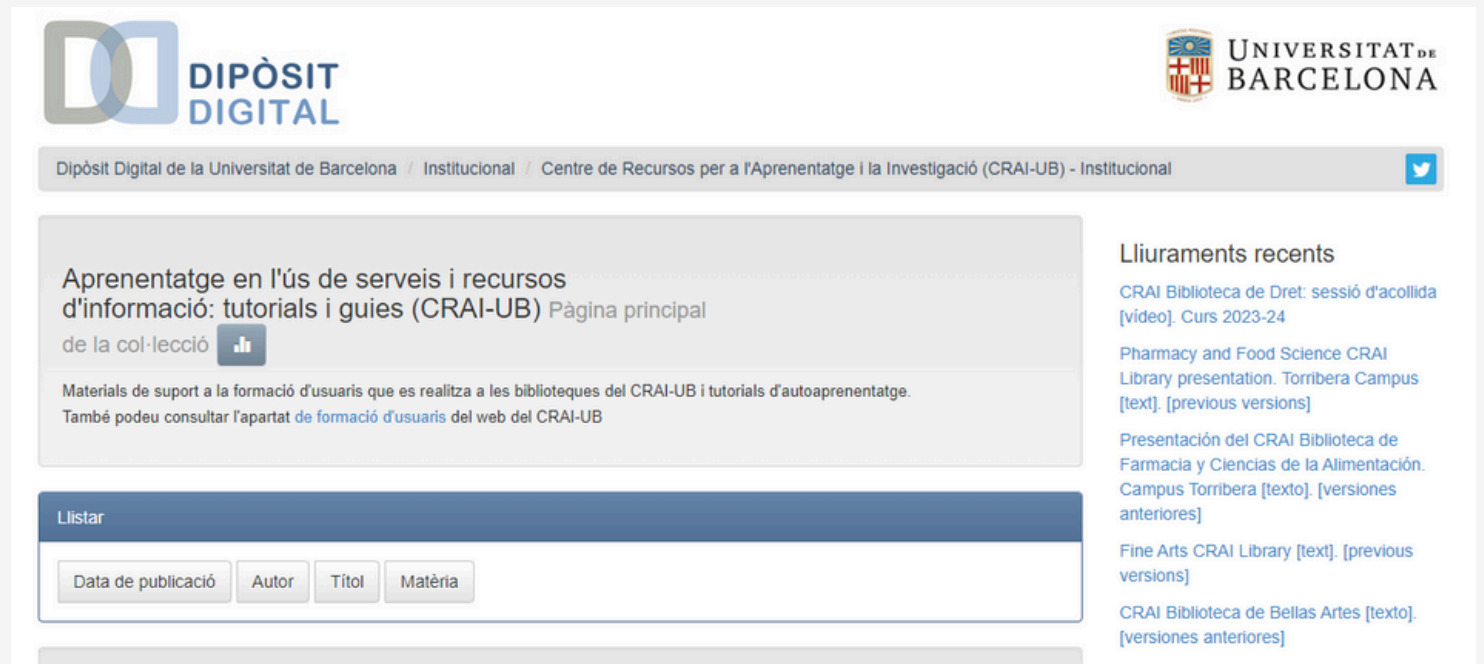


# We are



# Content creators

Each year we compile a report on our activities and publish all the documents created by the CRAI in the UB's Digital Repository.







# We are



# Digital

Part of our collection is digitized in different repositories, and many of our digital information resources are accessible through **Cercabib**.





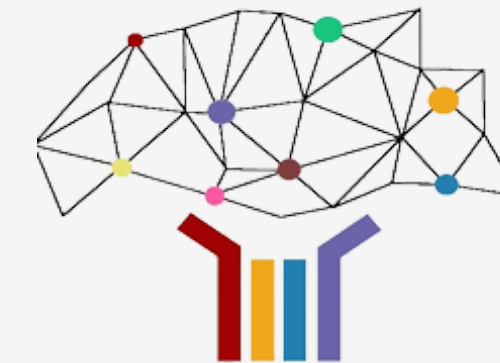


# We are



# Innovative

We constantly renew and adapt our facilities and offer resources about LKT/ICT tools.



**EspaiCrea**  
*Campus Clínic*











# We are

## Digitization Center (CEDI)



## Restoration Workshop



## CeDocBiV UB's Virtual Herbarium



# Preservers

We work for the conservation and preservation of our valuable bibliographic and documentary heritage.



# We are



# Social

We establish various channels of communication with our users through social media, providing information about our collections and services.





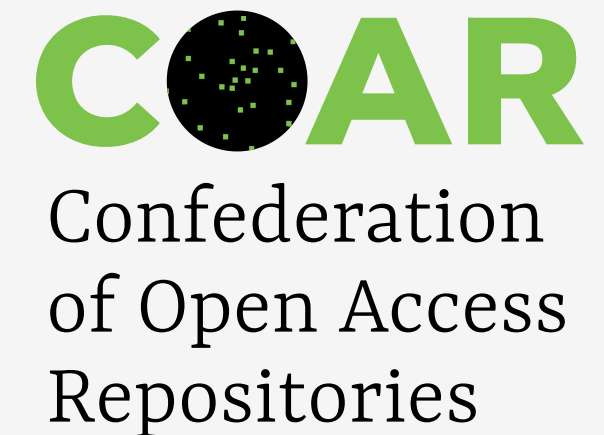


## We are



## Partners

We are a member of the **CSUC** (University Services Consortium of Catalonia) and **REBIUN** (Network of Spanish University Libraries) and of numerous other professional organizations and associations.





# We are



# Solidarity

We collaborate with different associations involved in specific activities and campaigns.







# We are



# Team

We are a team of information professionals that work to guarantee the quality of our services.



## INNOVA CRAI



**10a JORNADA  
DE BONES PRÀCTIQUES  
DEL CRAI DE LA UB**

**CONSERVAR EL PATRIMONI:  
UNA ESTRATÈGIA DE PRESENT PER AL FUTUR**  
#10jbpCRAIUB

 Facultat de Filosofia, Geografia i Història  
Sala Jane Addams | 4a planta

 27 de juny de 2023 | 10 h

 Amb assistència virtual via Teams





06

# Strategy and Quality







# Our strategy

The CRAI's policies, general strategy and quality structures are specified in the strategic plan, which defines our **purpose, vision, and values**. It also describes our **process management system** and establishes a **regulatory framework** for management and services. We operate with a process-based model, pursuing specific strategic lines and targeting areas for improvement.

We were the first Catalan university service to receive the **EFQM 500+ European Seal of Excellence**, in 2018.





## We continue to work and improve...



### Constant improvement

Each year, we evaluate our work and suggest areas for improvement.



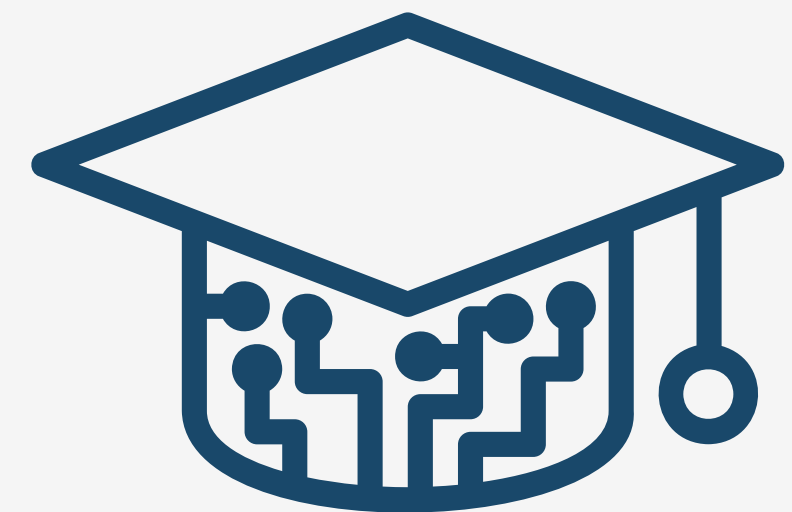
### Regulatory framework

We adapt to change in society, creating specific action plans.



### Transformative agreements

We sign agreements to publish in open access at no cost to researchers.



### New technologies

We offer support for the use of new technologies through LKT/ICT tools.





# Thank you!



CRAI Universitat de Barcelona, October 2025