

## 1 **Role of theobromine in cocoa's metabolic properties in healthy rats**

2 Mariona Camps-Bossacoma<sup>†</sup>, Mar Garcia-Aloy<sup>‡</sup>, Sandra Saldaña-Ruiz<sup>†</sup>, Trinitat Cambras<sup>†</sup>, Raúl  
3 González-Domínguez<sup>‡</sup>, Àngels Franch<sup>†</sup>, Francisco J. Pérez-Cano<sup>†\*</sup>, Cristina Andres-Lacueva<sup>‡</sup>,  
4 Margarida Castell<sup>†</sup>

5 <sup>†</sup>Secció de Fisiologia, Departament de Bioquímica i Fisiologia, Facultat de Farmàcia i Ciències de  
6 l'Alimentació, Universitat de Barcelona (UB), Barcelona; Institut de Recerca en Nutrició i  
7 Seguretat Alimentària (INSA-UB), Barcelona, Spain

8 <sup>‡</sup>Biomarkers and Nutrimentalomics Laboratory, Departament de Nutrició, Ciències de  
9 l'Alimentació i Gastronomia, XaRTA, INSA-UB, Facultat de Farmàcia i Ciències de l'Alimentació,  
10 UB, Barcelona; CIBER de Fragilidad y Envejecimiento (CIBERFES), Instituto de Salud Carlos III,  
11 Barcelona, Spain

12 E-mails: marionacamps@ub.edu; margarcia@ub.edu; ssaldana1@hotmail.com; cambras@ub.edu;  
13 raul.gonzalez@ub.edu; angelsfranch@ub.edu; franciscoperez@ub.edu; candres@ub.edu;  
14 margaridacastell@ub.edu

15 \*Address correspondence: franciscoperez@ub.edu; Tel.: +34 93 402 45 05

16

## 18 **Abstract**

19 Cocoa is rich in polyphenols and methylxanthines and it has been reported that its consumption,  
20 among other properties, has beneficial effects on metabolism. This study aimed to investigate the  
21 role of theobromine in cocoa's metabolic properties in healthy rats. In addition to morphometric  
22 measurements, biochemical markers of lipids and glucose metabolism and gene expression of  
23 molecules related to immune cells in adipose and hepatic tissues were assessed after 7 or 18 days of  
24 diet. Additionally, a metabolomic analysis was carried out at day 7. This study revealed the  
25 presence of six discriminant metabolites in plasma due to the diets. Moreover, the results showed  
26 that theobromine is the main responsible factor for cocoa's effects on body weight gain as well as  
27 on lipid and glucose metabolism. The effects on body weight and lipids appeared as early as after 7  
28 days of diet, whereas those affecting glucose metabolism required a longer intervention.

29 **Keywords:** body weight; cholesterol; HDL-cholesterol; fat; ghrelin; glucose; methylxanthine

30

## 32 INTRODUCTION

33 Cocoa is a product obtained from the seeds of the *Theobroma cacao* L. tree, which contains fiber,  
34 proteins, carbohydrates, lipids, minerals, vitamins, polyphenols and methylxanthines<sup>1,2</sup>. Within  
35 polyphenols, cocoa mainly contains flavonoids, the most important ones being the flavan-3-ols,  
36 such as epicatechin, catechin and procyanidins. Otherwise, theobromine (3,7-dimethylxanthine) is  
37 the methylxanthine found in the highest concentration in cocoa<sup>3</sup>.

38 In recent years, cocoa has increasingly attracted attention because of its potential health effects<sup>4</sup>.  
39 Cocoa's anti-inflammatory, antioxidant, anti-allergy and anti-obesity properties have been reported;  
40 its intake also influences mood, intestinal microbiota, the cardiovascular system and, interestingly,  
41 the metabolic profile<sup>4-9</sup>. Within the role of cocoa in metabolic properties, it has been shown that  
42 cocoa consumption has a beneficial effect on obesity as well as in the improvement of glucose,  
43 lipids and insulin levels<sup>8,10,11</sup>. Preclinical studies evidenced that the consumption of a 10% cocoa-  
44 enriched diet for 9 weeks in diabetic Zucker rats lowered glucose and insulin levels, and improved  
45 glucose tolerance and insulin resistance<sup>12</sup>. Similarly, the administration of 8% cocoa powder to  
46 mice with high-fat-diet-induced obesity reduced body weight (BW) gain, and insulin resistance<sup>11</sup>.  
47 Likewise, mice fed with high-fat-diet treated with a cocoa polyphenol concentrate decreased  
48 adipose tissue mass and plasma triglycerides (TG), and consequently the BW gain, without  
49 modifications in plasma glucose and cholesterol levels<sup>13</sup>. Otherwise, obese diabetic rats fed a cocoa  
50 extract enriched with polyphenols and methylxanthines for 4 weeks showed reduced plasma total  
51 cholesterol, TG and low-density lipoprotein cholesterol<sup>14</sup>. Apart from the cocoa metabolic effects in  
52 rodents, interventional studies in humans have reinforced the role of cocoa in body metabolism.  
53 Thus, overweight/obese premenopausal women consuming a sugar-free natural cocoa beverage and  
54 dark chocolate twice a day for 18 weeks, decreased plasma glucose and insulin concentrations<sup>15</sup>,  
55 and a similar population consuming dark chocolate for 7 days had higher HDL cholesterol (HDL-c)  
56 and reduced the abdomen circumference<sup>16</sup>. Moreover, Martínez-López et al. reported that the

57 consumption of a soluble cocoa product increased serum HDL-c whereas anthropometric  
58 parameters were unaffected<sup>17</sup>.

59 In our previous studies developed in rats, we detected that the administration of a diet containing  
60 10% cocoa was associated with a lower BW gain<sup>18-21</sup>. More recently, we have shown that the  
61 attenuating effect on antibody production and the lowering of BW gain in rats fed cocoa were  
62 similar to that observed in rats receiving theobromine alone<sup>22</sup>. These results prompted us to consider  
63 whether theobromine may also contribute to the effects of cocoa intake on glucose and lipid  
64 metabolism. For this reason, the present study aimed to establish the role of theobromine in  
65 metabolic cocoa's properties. Apart from comparing the metabolic profile induced by cocoa and  
66 theobromine diets, rat physical activity was measured and an untargeted metabolomics study was  
67 carried out.

## 68 **MATERIALS AND METHODS**

### 69 **Reagents and biological material**

70 Cocoa powder was obtained from Idilia Foods S.L. (formerly Nutrexp S.L., Barcelona, Spain),  
71 theobromine was purchased from Sigma-Aldrich (Madrid, Spain) and AIN-93M diet and basal mix  
72 by Harlan Teklad (Madison, USA). Ketamine was from Merial Laboratories S.A. (Barcelona,  
73 Spain) and xylazine from Bayer A.G. (Leverkusen, Germany). Polymerase Chain Reaction (PCR)  
74 TaqMan® primers were provided by Applied Biosystems (Weiterstadt, Germany). Rats were  
75 obtained from Janvier Labs (Saint-Berthevin Cedex, France).

### 77 **Experimental design**

78 Forty 3-wk-old Lewis rats were maintained at the animal facilities of the Faculty of Pharmacy and  
79 Food Science (University of Barcelona) and kept under controlled conditions of temperature and  
80 humidity in a 12h:12h light:dark cycle. This study was conducted in accordance with institutional  
81 guidelines for the Care and Use of Laboratory Animals and was approved by the Ethical Committee

82 for Animal Experimentation of the University of Barcelona and the Catalonia Government  
83 (CEEA/UB ref. 380/13 and DAAM 5988, respectively). The rats were distributed according to diet  
84 into three groups (n=12–14 each one): reference group (RF group) fed standard diet (AIN-93M),  
85 cocoa group (CC group) fed a diet containing 10% (w/w) cocoa powder (with a content of 2.5%  
86 theobromine), and the theobromine group (TB group) fed a 0.25% theobromine diet, which had the  
87 same amount of theobromine as that provided in the CC group. Diets containing cocoa and  
88 theobromine were prepared in our own laboratory, mixing ingredients (Teklad diets, Envigo,  
89 Indianapolis, USA) in the required quantities to provide the same amount of energy, micronutrients  
90 and macronutrients as the standard diet (Supporting Table 1). After mixing, food pellets were made  
91 and dried. The animals had access to food and water *ad libitum* throughout the study.  
92 Rats were housed in cages (2–3 rats in each cage). During some periods (days 5 to 7 and days 9 to  
93 14), animals were individually housed in order to establish their motor activity. The nutritional  
94 intervention lasted for 7 or 18 days (**Figure 1**). After these periods, rats were deprived of food for  
95 18 h and were then euthanized for sample collection.

#### 96 **Data and sample collection**

97 Food and water intake (FI and WI, respectively) were monitored throughout the study. BW, body  
98 length (BL), and rectal body temperature were determined just before euthanasia. Body mass index  
99 (BMI), Lee index and food efficiency were also calculated. On days 8 and 19, inguinal and  
100 retroperitoneal adipose tissues, heart, liver, right kidney, small intestine and large intestine (colon  
101 and caecum) were collected and weighted. Moreover, plasma was obtained and stored at -80 °C  
102 until processing. At day 8, inguinal adipose tissue and liver were kept at -80 °C until mRNA  
103 quantification and/or biochemical variables determination.

#### 104 **Biochemical determinations in plasma and liver**

105 Plasma total cholesterol, HDL-c, TG, and glucose concentrations were determined by specific  
106 colorimetric kits (Química Clínica Aplicada S.A., Spain), following the manufacturer's instructions  
107 adapted to a microplate. Absorbance was measured at 505 nm (microplate Tecan photometer, Tecan

108 Group Ltd, Männedorf, Switzerland). LDL cholesterol (LDL-c) concentration was estimated by  
109 means of the Friedewald formula ( $\text{LDL-c} = \text{total cholesterol} - (\text{HDL-c} + \text{TG}/5)$ ). In order to measure  
110 hepatic TG, frozen liver tissue samples were homogenized with a Polytron® (Kinematica, Lucerne,  
111 Switzerland) in isopropanol (1 mL/50 mg liver), kept for 1 h at 4 °C and then centrifuged (1313 g, 4  
112 °C, 5 min). Supernatants were used for TG determination.

### 113 **Metabolic hormones determination**

114 Plasma ghrelin, glucagon, glucagon-like peptide (GLP-1) and leptin were evaluated after fasting in  
115 19-day samples, with the Bio-Plex Pro™ Diabetes Assay (Bio-Rad Laboratories, Madrid, Spain).  
116 The lower and upper limits of quantification were: 159.58–155595.25 pg/mL (ghrelin),  
117 23.43–1316.37 pg/mL (glucagon), 8.44–1999.39 pg/mL (GLP-1) and 123.73–130750.77 pg/mL  
118 (leptin). Plasma insulin was measured using an ultra-sensitive ELISA kit (Ultra Sensitive Rat  
119 Insulin ELISA kit) from Crystal Chem (Downers Grove, IL, USA) according to the manufacturer's  
120 instructions.

### 121 **Fecal fat content and pH determinations**

122 Feces collected from the whole of day 7 were humidified and submitted to near infrared  
123 spectroscopy to determine the fat content by means of an InfraAlyzer 500 (Bran+Luebbe,  
124 Norderstedt, Germany). Furthermore, fecal pH determination was performed in feces from days 7  
125 and 18 using a surface pH electrode (Crison Instruments, SA, Barcelona, Spain).

### 126 **Gene expression quantification**

127 In liver and adipose tissue samples, we determined the gene expression of molecules expressed in  
128 particular immune cells, such as CD11b (monocytes, neutrophils, natural killer cells, granulocytes  
129 and macrophages), CD11c (monocytes, granulocytes, some B cells, dendritic cells and  
130 macrophages), CD68 (monocytes and macrophages), CD4 (predominant on T helper cells, but also  
131 in macrophages, monocytes and dendritic cells), CD8 $\alpha$  (predominant on cytotoxic T cells and in  
132 natural killer cells and dendritic cells) and Foxp3 (regulatory T cells). In addition, we quantified the  
133 gene expression of pro-inflammatory cytokines, such as interleukine (IL)-1 $\beta$ , TNF $\alpha$ , IL-6, MCP-1

134 and IFN $\gamma$ , anti-inflammatory cytokines, such as IL-4 and IL-10, and the transcription factors NF- $\kappa$ B  
135 (involved in inflammation) and PPAR- $\gamma$  (present in adipose tissue and macrophages and involved in  
136 inflammation regulation). For this, liver and adipose tissue samples were homogenized in a lysing  
137 matrix tube (MP Biomedicals, Illkirch, France) by a FastPrep-24 equipment (MP Biomedicals, 30 s,  
138 at 6.5 m/s). Total RNA was extracted using the RNeasy<sup>®</sup> mini kit (Qiagen, Madrid, Spain)  
139 following the manufacturer's directions. The NanoPhotometer (BioNova Scientific, CA, USA) was  
140 used to determine RNA concentration. A thermal cycler PTC-100 Programmable Thermal  
141 Controller with TaqMan<sup>®</sup> Reverse Transcription Reagents (Applied Biosystems, AB, Weiterstadt,  
142 Germany) was applied to obtain cDNA. Subsequently, a PCR quantitative assay was carried out  
143 (ABI Prism 7900 HT, AB) using the following specific PCR TaqMan<sup>®</sup> primers: CD11b  
144 (Rn00709342\_m1, Inventoried (I)), CD11c (Rn01511082\_m1, I), CD68 (Rn01495634\_m1, I), CD4  
145 (Rn00562286\_m1, I), CD8 $\alpha$  (Rn00580577\_m1, I), FoxP3 (Rn01525092\_m1, I), IL-1 $\beta$   
146 (Rn00580432\_m1), IL-10 (Rn00563409\_m1, I), IL-6 (Rn01410330\_m1, I), TNF $\alpha$   
147 (Rn99999017\_m1, I), NF- $\kappa$ B (Rn01399572\_m1, I), IFN $\gamma$  (Rn00694078\_m1, I) PPAR $\gamma$   
148 (Rn00440945\_m1, I), MCP-1 (Rn00580555\_m1, I). The relative amount of target mRNA was  
149 normalized using  $\beta$ -actin (Rn00667869\_m1, I) or HPRT1 (Rn01527840\_m1, I) as housekeeping  
150 genes and the  $2^{-\Delta\Delta C_t}$  method, as previously described<sup>23</sup>. The gene expression obtained was  
151 calculated giving the 1 value to the mean results from the RF group.

## 152 **Metabolomic analyses**

153 The untargeted metabolomics analyses were performed on plasma samples collected after 7 days of  
154 intervention with a high-performance liquid chromatography coupled to electrospray ionization and  
155 quadrupole time-of-flight mass spectrometry (HPLC-ESI-QToF-MS) as previously published<sup>24</sup>.  
156 Detailed description is given as Supporting Information (Supporting Table 2).

## 157 **Motor activity measurement**

158 Spontaneous motor activity of each animal was continuously recorded on days 5 to 7 and 9 to 14 by  
159 means of activity meters placed outside the cage that used two perpendicular crossed infrared beams

160 situated 6 cm above the floor of the cage. Each beam interruption represented an activity count that  
161 was registered and stored in 15-min data bins for further analysis. Total daily activity was  
162 calculated as well as the nocturnal and diurnal activity separately. Results are expressed as the mean  
163 values (counts every 15 minutes).

#### 164 **Statistical analysis**

165 Data were evaluated with the software package SPSS 22.0 (IBM Statistical Package for the Social  
166 Sciences, version 22.0, Chicago, IL, USA) by using the parametric test one-way ANOVA followed  
167 by Bonferroni's post hoc test or the nonparametric tests Kruskal–Wallis and Mann–Whitney U in  
168 accordance with its homogeneity of variance (Levene test) and distribution (Shapiro–Wilk test).  
169 Significant differences were established when  $P \leq 0.05$ .

170 Significant mass features selected after multi- and univariate statistical analyses of the  
171 metabolomics dataset were identified by a multistep procedure as specified in Supporting  
172 Information. Untargeted metabolomics data were analyzed by multivariate statistical methods using  
173 SIMCA-P+ 13.0 software (Umetrics, Umea, Sweden). Particular statistical analysis for these data is  
174 expanded in the Supporting Information.

175 The metabolites identified by the untargeted metabolomics analysis were correlated with the results  
176 from BW gain, BMI, Lee index, FI, WI, inguinal, retroperitoneal, small and large intestine tissue  
177 weights, fecal fat, plasma total cholesterol, HDL-c and LDL-c concentrations and hepatic TG  
178 levels. For this, after a log-transformation of results, Spearman's correlation analyses were  
179 performed. The Benjamini–Hochberg method was used to adjust p-values for multiple testing  
180 considering a 5% false discovery rate.

## 181 **RESULTS**

### 182 **Morphometric variables**

183 Morphometric changes were already detected after 7 days of the experimental diets (**Table 1**).  
184 Specifically, the animals from the CC and TB groups had lower BW gain ( $P < 0.001$ ). Moreover, the



185 rats fed CC and TB diets for 18 days presented lower body length than those of the RF group  
186 ( $P < 0.001$ ). Decreased BMI was found in the CC and TB groups ( $P < 0.05$ ) on days 8 and 19 and,  
187 additionally, on day 8 the Lee index in both interventional groups was lower than in the RF animals  
188 ( $P < 0.05$ ). In any case, no differences were detected between CC and TB groups, the changes being  
189 almost identical between them.

190 In spite of the lower values in morphometric changes, mean FI did not decrease in the CC or TB  
191 groups, but mean WI increased in both interventional groups compared to the RF one ( $P < 0.001$ )  
192 (**Table 1**). With regard to food efficiency, the CC and TB groups showed lower values than the RF  
193 animals, which was already evidenced after one single week of diet ( $P < 0.05$ ) (**Table 1**).

#### 194 **Body temperature and spontaneous physical activity**

195 Rectal temperature was measured at days 7 and 18. There were no changes in body temperature  
196 between the considered groups at any of the studied time points (**Table 1**). Moreover, motor activity  
197 was individually measured between days 5 to 7 and days 9 to 14. In the first period, cocoa diet  
198 decreased diurnal motor activity compared to the RF group (**Figure 2a–b**) without statistically  
199 significant changes when considering the whole day. In the second period, higher activity was  
200 observed in animals fed cocoa diet than in those from the RF group, both in diurnal and nocturnal  
201 determinations. The activity in the TB group did not achieve a significant modification compared to  
202 RF animals (**Figure 2c–d**).

#### 203 **Relative organ and tissue weights**

204 After euthanasia on days 8 or 19, some organs and adipose tissues were collected and weighed  
205 (**Table 1**). Animals from the CC and TB groups showed lower relative retroperitoneal fat weight at  
206 both time points ( $P < 0.05$ ), although the relative inguinal fat weight was lower only in the TB group  
207 after 18 days of diet. The rats fed cocoa for 18 days had higher relative heart weight ( $P < 0.05$ ). In  
208 the two studied time points no changes in the relative kidney weight were observed. However, the  
209 CC and TB groups had lower relative liver weight than the RF group ( $P < 0.01$ ), the TB value being  
210 even lower than that of the CC group after 18 days of diet ( $P < 0.05$ ). On the other hand, the relative

211 small and large intestinal weights were higher after 7 and 18 days of the two experimental diets in  
212 comparison to the RF group ( $P<0.05$ ) (**Table 1**).

### 213 **Fecal fat and pH values**

214 Fecal fat content, determined after 7 days of diet, was lower in cocoa- and theobromine-fed animals  
215 in comparison to the RF group ( $P<0.01$ ), and even the rats from the CC group showed less fecal fat  
216 levels than the TB group ( $P<0.05$ ) (**Figure 3**). Otherwise, cocoa diet lowered fecal pH detected at  
217 day 18 in comparison to the RF and TB groups ( $P<0.05$ ) (**Figure 3**).

### 218 **Cholesterol and triglyceride concentrations**

219 After 7 days of diet, the total plasma cholesterol concentrations in both CC and TB groups were  
220 about 15% lower than those detected in the RF group ( $P<0.05$ ) (**Table 2**). Nevertheless, no  
221 differences were detected later. Similar results were observed in LDL-c content. Interestingly,  
222 HDL-c values increased by 24–41% in the CC and TB groups at both studied time points ( $P<0.05$ )  
223 (**Table 2**). Moreover, plasma TG concentrations from the TB group were significantly lower after  
224 18 days of diet ( $P<0.01$ ) (**Table 2**) while hepatic TG concentrations decreased after both cocoa and  
225 theobromine diets, this already observable just after one week of diet ( $P<0.001$ ) (**Table 2**).

### 226 **Liver and adipose tissue gene expression**

227 The influence of diets containing cocoa or theobromine on the gene expression of some immune  
228 molecules in hepatic and adipose tissues was quantified after one week of diet (**Figures 4 and 5**).

229 With regard to the liver (**Figure 4**), cocoa-enriched diet reduced the gene expression of CD11c and  
230 CD4 without inducing significant changes in CD11b, CD68, Foxp3, TNF- $\alpha$ , NF- $\kappa$ B and PPAR- $\gamma$ .

231 Moreover, both CC and TB groups showed lower mRNA levels of CD8 $\alpha$ , IL-10 and IL-1 $\beta$  with  
232 respect to the RF group. The TB group had higher TNF- $\alpha$  and NF- $\kappa$ B hepatic gene expressions than  
233 the RF and CC groups ( $P<0.05$ ). In this tissue, the mRNA levels of IL-4, IL-6, MCP-1 were  
234 undetectable in any of the considered groups.

235 With regard to adipose tissue (**Figure 5**), the gene expression of CD11b, CD11c, Foxp3, IFN- $\gamma$ ,  
236 TNF- $\alpha$ , IL-4, and IL-6 was undetectable. Both nutritional interventions induced an upregulation of

237 the CD68 and MCP-1 gene expression and a downregulation of the CD4 expression with respect to  
238 the RF group ( $P < 0.05$ ). Moreover, animals fed cocoa had higher gene expression of IL-10 and  
239 IL-1 $\beta$  whereas the TB group showed lower gene expression of CD8 $\alpha$  in comparison to the RF  
240 animals. No changes in NF- $\kappa$ B and PPAR- $\gamma$  expressions were found in the CC and TB groups.

#### 241 **Glucose metabolism**

242 After 7 days of diet, the plasma glucose concentrations in fasting conditions were similar within  
243 groups, however, after 18 days, the CC and TB groups had higher plasma glucose concentrations  
244 than the RF group (**Table 2**). At this later time point, plasma ghrelin, glucagon, GLP-1, leptin and  
245 insulin concentrations were determined (**Figure 6**). The rats from CC and TB groups showed higher  
246 ghrelin concentrations and lower glucagon levels than the RF group ( $P < 0.01$  and  $P < 0.05$ ,  
247 respectively). In fasting conditions, GLP-1 and leptin levels were below the limit of detection in the  
248 three experimental groups. There was no difference in plasma insulin levels among the studied  
249 groups, although a tendency to decrease ( $P = 0.092$ ) was observed after both experimental diets.

#### 250 **Metabolomic analyses**

251 The metabolomic analyses are detailed in the supporting information (Supporting Information  
252 Figure S1 and Tables S3 and S4). As mentioned in the Material and Methods section, only features  
253 showing high correlation coefficients ( $|p(\text{corr})| > 0.75$ ) in all models developed during the leave-  
254 one-out procedure were included in the list of discriminating metabolites explaining the differences  
255 between groups, which were then submitted to the metabolite identification procedure. A total of  
256 185 features fulfilled this criteria, 135 features from the ESI(+) data set and 50 features from the  
257 ESI(-) data set. The scores plot of the three-group PLS-DA models with non-OSC filtered data  
258 using the selected features revealed higher differences (displayed through PC1) between the REF  
259 group and the other two groups, followed by differences between the animals supplemented with  
260 cocoa and those supplemented with theobromine (PC2), indicating that each diet induced a different  
261 metabolomic pattern (**Figure 7**). Among the features selected as significant, eight of them were  
262 assigned to the six compounds that were identified as discriminant metabolites. They were related

263 to at least one of the study groups: theobromine, pantothenic acid, glycocholic acid, citrulline, 5-(2'-  
264 carboxyethyl)-4,6-dihydroxypicolinate (CEDHP), and 5-hydroxyindoleacetic acid (HIAA) (**Figure**  
265 **8**). Mass features of these compounds are listed in the Supporting Information Table S5.  
266 Theobromine was an exogenous metabolite only found in the CC and TB groups and, as expected,  
267 there were no differences between the two experimental diets. As endogenous metabolites, the CC  
268 and TB groups showed higher concentrations of pantothenic acid and glycocholic acid than the RF  
269 group ( $p < 0.05$ ). Moreover, the TB group exhibited higher levels of citrulline compared with the RF  
270 group, and higher levels of CEDHP in comparison to both the RF and CC groups ( $P < 0.05$ ). Finally,  
271 the intake of both cocoa- and theobromine-enriched diets induced lower levels of HIAA than those  
272 in the RF group.

### 273 **Correlations between morphometric and biochemical data, and the discriminant metabolites**

274 In order to determine the relationship between the discriminant metabolites and morphometric and  
275 biochemical significant results obtained at the same time point, correlations between both data were  
276 carried out (**Figure 9**). Theobromine plasma concentration correlated negatively with BMI,  
277 retroperitoneal fat weight and hepatic TG, whereas it correlated positively with WI, small and large  
278 intestine weights as well as with plasma HDL-c levels. Almost similarly, the plasma concentrations  
279 of pantothenic acid negatively correlated with BW gain, BMI, food efficiency and hepatic TG while  
280 it correlated directly with higher WI and small intestine weight.

281 Moreover, the more plasma concentration of glycocholic acid detected, the lower the fecal fat  
282 observed. Likewise, higher citrulline concentrations correlated with higher levels of HDL-c. The  
283 amount of the metabolite CEDHP correlated positively with the large intestinal relative weight and  
284 negatively with plasma TG. Regarding the metabolite HIAA, found in lower concentrations in the  
285 CC and TB groups, it positively correlated with lower BW gain, BMI, fecal fat content, total  
286 cholesterol, LDL-c and plasma TG. Otherwise, HIAA correlated negatively with WI and small and  
287 large intestinal relative weights.

288 Regarding the Lee index, FI and inguinal fat weight, no significant correlation was detected with  
289 any of the studied metabolites.

## 290 **DISCUSSION**

291 Previous studies have reported the effect of cocoa on metabolism<sup>8,11-13,25,26</sup>. However, the exact  
292 compound responsible for such effect and the length needed to achieve such benefits still remain  
293 unknown and are a topic of debate. Although polyphenols and methylxanthines are recognized  
294 bioactive compounds in cocoa<sup>3</sup>, a vast number of studies have associated the cocoa role in  
295 metabolism only with its polyphenol content. In the current study, we evidence the importance of  
296 theobromine in the metabolic properties of cocoa as well as its rapid effects.

297 Rats fed with 10% cocoa that consumed a similar or even higher amount of food than the RF group,  
298 underwent a lower body weight gain as early as after 7 days of diet, which was accompanied by  
299 lower BMI and Lee's index. Importantly, theobromine on its own produced similar actions. Cocoa  
300 effects on body weight increase have already been reported both in animal models and humans<sup>11-  
301 13,15,27</sup> and it has been postulated that cocoa is a weight loss accelerator<sup>28</sup>. Our results concerning  
302 body temperature and motor activity demonstrated that, at least after the first week of diet, there  
303 was no increase in the metabolic rate. The metabolomic analyses carried out after 7 days of diet  
304 showed that BMI inversely correlated with the plasma concentrations of theobromine, which is in  
305 line with a previous study showing a negative association of BMI with the amount of theobromine  
306 in urine of rats fed cocoa for 3 weeks<sup>29</sup>. On the other hand, we found a higher water intake in  
307 animals fed cocoa or theobromine, data that correlated directly with the plasma concentrations of  
308 theobromine. This higher water intake could be a consequence of the theobromine's diuretic  
309 actions<sup>30</sup> in order to compensate the high volume of excreted urine. Overall, these results allow us  
310 to conclude that cocoa theobromine content is an important cocoa metabolite involved in the body  
311 weight homeostasis.

312 In line with a reduced body weight gain and BMI, rats fed cocoa or theobromine diets had a lower  
313 amount of retroperitoneal fat after 7 and 18 days of diet. These results agree with those reported in  
314 high-fat-fed obese mice fed 8% cocoa powder<sup>11</sup> and with a study carried out in European  
315 adolescents reporting that higher chocolate consumption was related with lower fatness<sup>31</sup>. After 7  
316 days of diet, as observed by correlations after metabolomic analyses, the higher the plasma  
317 theobromine concentration, the lower the amount of retroperitoneal fat found. Thus, it can be  
318 suggested that these cocoa effects on adipose tissue could be due to its theobromine content.  
319 However, the proportion of inguinal fat in the theobromine group at day 19 was lower than that in  
320 the cocoa group, suggesting that other cocoa compounds (polyphenols and/or fiber) could attenuate  
321 this particular effect. On the other hand, adipose tissue is an immune organ that links metabolism  
322 and immunity<sup>32</sup>. In this sense, it has been described that cocoa intake decreased macrophage  
323 infiltration in adipose tissue in obese mice<sup>11</sup>. However, in this tissue, we have detected a higher  
324 gene expression of CD68 and MCP-1 (molecules present in macrophages and involved in their  
325 recruitment, respectively) after cocoa and theobromine intake, and higher IL-1 $\beta$  gene expression in  
326 cocoa-fed rats. These discrepancies could be due to the status of the animals – healthy status in the  
327 current study and obese status in the first described case<sup>11</sup> – which had already shown an increased  
328 macrophage infiltration before cocoa intake. Nevertheless, although some macrophage-related  
329 molecules increased, other transcriptional factors related to macrophage or immune activation, such  
330 as NF- $\kappa$ B and PPAR- $\gamma$ , were not modified by cocoa or theobromine diets, and, interestingly, the  
331 cocoa diet increased the adipocyte gene expression of the anti-inflammatory cytokine IL-10.  
332 Similarly, the gene expression of CD4 was down-regulated by cocoa and theobromine intake, and  
333 that of CD8 only by the theobromine diet. Both CD4 and CD8 are mainly related to lymphocytes  
334 and their decrease suggests that there was lower lymphocyte infiltration into the fat. In short, results  
335 of adipocyte gene expression suggest that cocoa, partially due to its theobromine content, may be  
336 involved in avoiding the low-grade inflammatory status observed in obesity<sup>32</sup>. Nevertheless,  
337 because the effect in fat gene expression of both cocoa- and theobromine-enriched diets differed in

338 some molecules, the role of other cocoa bioactive compounds such as polyphenols or fiber cannot  
339 be discarded.

340 Fecal samples obtained after 7 days of cocoa or theobromine diet also provided significant results  
341 regarding fat content. We found that the fecal fat content in animals fed theobromine and cocoa  
342 decreased. These results do not agree with those reported in obese mice fed a cocoa diet<sup>11</sup> or in  
343 obese animals fed with other phytotherapeutic diets<sup>33</sup>. This disagreement could again be due to the  
344 different status of the animals or to the different technique used. Nevertheless, we observed that the  
345 two experimental diets exerted a similar effect, although it was more obvious in the cocoa group,  
346 suggesting the role of other compounds present in the whole cocoa diet in fat excretion.

347 A relevant outcome observed in the current study was the influence of cocoa and theobromine on  
348 plasma lipids such as cholesterol. Although we found that cocoa diet decreased plasma  
349 concentrations of total cholesterol and LDL-c, after 7 days of diet, this effect was not longer  
350 detected. In fact, it has been reported that in rats fed a high-fat diet with 12.5% cocoa for 21 days<sup>34</sup>  
351 no decrease was seen in either plasma cholesterol or LDL-c levels, which also agree with studies  
352 carried out in humans<sup>35,36</sup>. Nevertheless, both the cocoa diet and the diet containing only  
353 theobromine increased plasma HDL-c levels. Similar effects have been reported in humans after a  
354 nutritional intervention with cocoa<sup>35,36</sup> and with rats fed a high-fat diet plus cocoa<sup>34</sup>. The increase in  
355 HDL-c concentration correlated with the plasma levels of theobromine. In partial agreement with  
356 this, a recent study in humans taking 500 mg/day theobromine for 4 weeks<sup>37</sup> demonstrates that  
357 theobromine consumption tended to increase fasting plasma HDL-c concentrations. Overall, the  
358 current results indicate that in the reported beneficial effects of cocoa intake on plasma lipids,  
359 theobromine from cocoa content plays a relevant role. Although the results obtained from the cocoa  
360 diet agree with a previous study showing a downregulation of colonic *Adipoq* gene expression,  
361 which is involved in lipid metabolism<sup>38</sup>, further studies must be carried out to establish the effects  
362 of both cocoa and theobromine on key enzymes related to lipid metabolism.

363 On the other hand, cocoa diet and its methylxanthine alone influence the hepatic tissue. After one  
364 week of both diets there was a reduction in hepatic triglycerides and changes in the gene expression  
365 of several molecules. These results on hepatic triglycerides are in line with those reported in adult  
366 mice fed with a high-fat diet plus 8% cocoa<sup>11</sup>, although the effects obtained here were more  
367 obvious, which could be due to the use of younger animals fed a standard diet, the higher cocoa  
368 proportion and/or the cocoa's composition. Anyway, despite the fact that the effect of cocoa in the  
369 suppression of hepatic fatty acid synthesis and transport systems in mesenteric white adipose tissue  
370 has been reported<sup>34</sup>, the influence of cocoa on hepatic triglycerides deserves a more in-depth study.  
371 We also studied the hepatic gene expression of molecules involved in promoting or inhibiting  
372 inflammation. Although both diets decreased the gene expression of the pro-inflammatory cytokine  
373 IL-1 $\beta$  and cocoa intake down-regulated CD11c expression, there was a decrease in the expression  
374 of the anti-inflammatory IL-10 and theobromine intake increased the gene expression of TNF- $\alpha$  and  
375 NF- $\kappa$ B, promoting inflammation. On the other hand, CD4 and CD8 molecule gene expressions  
376 were down-regulated by cocoa and/or theobromine, suggesting lower lymphocyte presence in the  
377 liver. Overall, the results of the hepatic genes studied do not clarify whether immune mechanisms  
378 were involved in the effects of cocoa on the liver. Moreover, the intake of cocoa and theobromine  
379 did not show identical effects on the molecules considered, indicating that other bioactive  
380 compounds included in the whole cocoa diet can enhance or attenuate that of theobromine alone.

381 As previous studies demonstrated the influence of a cocoa diet on glucose metabolism<sup>12</sup>, we also  
382 tested plasma glucose concentrations, which did not vary after 7 days of diet but increased in the  
383 18-day samples in a similar way in both cocoa- and theobromine-fed animals. Therefore, we  
384 determined insulin concentrations, as well as hormones associated with glucose metabolism at this  
385 time point. The current study revealed that cocoa and theobromine on its own increased ghrelin  
386 levels and decreased glucagon concentration, as already reported in rats fed 10% cocoa<sup>29</sup>. Ghrelin,  
387 also known as the hunger hormone, is a multifaceted hormone secreted by the stomach, which is  
388 influenced by the BMI, glucose and insulin levels, among other factors<sup>39</sup>. Ghrelin is involved in the



389 inhibition of insulin secretion and contributes to glucose homeostasis, apart from regulating energy  
390 homeostasis<sup>40</sup>. Otherwise, glucagon is a hormone produced in the  $\alpha$  cells of the pancreatic islets  
391 stimulated by low levels of glucose<sup>41</sup>. From our results obtained in fasting samples after 18 days of  
392 cocoa or theobromine diets, we can suggest that the higher ghrelin secretion might be due to  
393 stimulation from the lower BMI and could increase plasma glucose concentration, whereas it  
394 decreased glucagon levels and tended to decrease plasma insulin. The discrepancy between the  
395 current results and previous studies that show the antidiabetic effects of a cocoa diet could be due to  
396 the age of the rats at the beginning of the nutritional intervention as well as the use of healthy rather  
397 than diabetic animals. In fact, a study in humans taking dark chocolate found decreased plasma  
398 glucose concentrations when  $BMI \geq 25 \text{ kg/m}^2$  but no changes when  $BMI < 25 \text{ kg/m}^2$ <sup>42</sup>. Although  
399 further studies are required to check the importance of age and the existence of diabetes/overweight  
400 in the cocoa/theobromine effects, our findings suggest that theobromine plays an important role in  
401 the influence of cocoa on glucose metabolism. In this sense, it has been reported that cocoa intake  
402 produces a downregulation of colonic *Adipoq* gene expression involved in glucose metabolism as  
403 well as that of lipids, as has been mentioned above<sup>38</sup>.

404 Finally, it is important to highlight the levels of endogenous discriminant metabolites found after  
405 cocoa and/or theobromine intake and their correlations with some outcomes obtained after 7 days of  
406 diet. Higher plasma pantothenic acid was correlated with lower body weight gain, BMI, food  
407 efficiency and hepatic triglycerides, and higher water intake and small intestine weight. The  
408 pantothenic acid (vitamin B5) is a precursor for the coenzyme A (CoA) and acyl carrier protein,  
409 involved in the metabolism of steroids, fatty acids and phosphatides<sup>43</sup>. CoA is found in the pathway  
410 of cholesterol synthesis, amino acid catabolism, and is a crucial substrate in the oxidation of fatty  
411 acids<sup>44</sup>. The higher levels of pantothenic acid in cocoa and theobromine groups might be associated  
412 with an enhanced fatty-acid metabolism that would partially explain the lower body weight gain and  
413 the decrease in hepatic triglycerides as well as plasma cholesterol levels. Also related to the lipid  
414 metabolism, we found a negative correlation between the elevated glycocholic acid levels in cocoa

415 and theobromine groups and their reduced fecal fat content. As glycocholic acid is an indirect  
416 cholesterol-derived bile acid<sup>45</sup>, it can be suggested that a high amount of glycocholic in plasma  
417 could promote lipid metabolism.

418 On the other hand, plasma citrulline concentrations were directly associated with those of HDL-c.  
419 Citrulline is a nonessential amino acid, precursor of arginine. In particular, from arginine and  
420 different cofactors NO-synthase produced NO with release of citrulline<sup>46</sup>. Although with the current  
421 results we cannot evidence the exact pathway affected by the citrulline increase, it has been  
422 reported, in agreement with the current results, that the supplementation of L-citrulline is associated  
423 with increased HDL-c levels<sup>47</sup>.

424 The metabolite 5-(2'-carboxyethyl)-4,6-dihydroxypicolinate (CEDHP) was found in higher plasma  
425 concentrations in those animals receiving theobromine. This compound was derived from the  
426 tryptophan metabolism and comes from the kynurenine pathway. Our results are in line with the  
427 increased kynurenine production observed after black tea consumption<sup>48</sup>. In particular, CEDHP  
428 levels inversely correlated with plasma triglycerides, suggesting the involvement of this pathway,  
429 which is beneficial for the triglyceridemia status. Another metabolite indicating the implication of  
430 this pathway is the HIAA, which is the only one that was found in lower concentrations after cocoa  
431 and theobromine intake in comparison with the animals fed standard diet. HIAA was associated  
432 with a lot of changes found after cocoa or theobromine consumption, such as body weight increase,  
433 water intake, small and large intestine weights, fecal fat content and with plasma cholesterol and  
434 hepatic triglyceride levels. HIAA is involved in the tryptophan metabolism system, as it is a  
435 breakdown product of serotonin and considered as a marker for the endogenous serotonin  
436 turnover<sup>49</sup>. In fact, higher urinary HIAA excretion in rats has been reported after cocoa intake and  
437 has been related to cocoa tryptophan degradation by gut microbiota<sup>29</sup>. Therefore, it can be suggested  
438 that the changes in the microbiota induced by cocoa and theobromine would reduce the absorption  
439 of tryptophan that will be found in lower plasma concentrations after one week of diets containing  
440 both products. Interestingly, such lower absorption seems related to lower plasma cholesterol and

441 triglyceride concentrations. In this line, it has been shown that severe tryptophan restriction  
442 decreased body weight, body fat and lean mass in obese-prone rats<sup>50</sup>.

443 In conclusion, from the results obtained in rats fed cocoa or only theobromine, we can conclude that  
444 this methylxanthine is the main factor responsible for cocoa's effects on body weight gain as well as  
445 on the lipid and glucose metabolism. These effects on body weight and lipids appeared as early as  
446 after 7 days of diet, whereas those affecting glucose metabolism require a longer intervention.

## 447 Abbreviations

448 AB, Applied Biosystems; BL, body length; BMI, body mass index; BW, body weight; CC, cocoa  
449 group; CEDHP, 5-(2'-carboxyethyl)-4,6-dihydroxypicolinate; CoA, coenzyme A; FI, food intake;  
450 GLP-1, glucagon-like peptide; HDL-c, high-density lipoprotein cholesterol; HIAA,  
451 hydroxyindoleacetic acid; HPLC-ESI-QToF-MS, high-performance liquid chromatography coupled  
452 to electrospray ionization and quadrupole time-of-flight mass spectrometry; IL, interleukin; LDL-c,  
453 low-density lipoprotein cholesterol; OSC-PLS-DA, partial least squares discriminant analysis with  
454 orthogonal signal correction; PCA, principal components analyses; PCR, polymerase chain  
455 reaction; QC, quality control; RF, reference group; TB; theobromine group; TG, triglycerides; WI,  
456 water intake

## 457 Acknowledgments

458 The authors would like to thank Idilia Foods S.L. for providing the cocoa powder. RGD thanks the  
459 “Juan de la Cierva” program from MINECO (FJCI-2015-26590). The authors would like to thank  
460 Marc Bitlloch and Silvia Plana for their help in the laboratory work.

## 461 Funding sources

462 This study was supported by a grant from INSA-UB (FRI-2014) and from the Spanish Ministry of  
463 Economy and Competitiveness (AGL2011-24279). MGA, RGD and CAL also thanks  
464 the SGR2017-1556 from the Generalitat de Catalunya's Agency AGAUR.

## 465 References

- 466 (1) Katz, D. L.; Doughty, K.; Ali, A. Cocoa and Chocolate in Human Health and Disease.  
467 *Antioxid. Redox Signal.* **2011**, *15*, 2779–2811.
- 468 (2) Di Mattia, C. D.; Sacchetti, G.; Mastrocola, D.; Serafini, M. From Cocoa to Chocolate: The

- 469 Impact of Processing on in Vitro Antioxidant Activity and the Effects of Chocolate on  
470 Antioxidant Markers in Vivo. *Front. Immunol.* **2017**, *8*, 1207.
- 471 (3) Franco, R.; Oñatibia-Astibia, A.; Martínez-Pinilla, E. Health Benefits of Methylxanthines in  
472 Cacao and Chocolate. *Nutrients* **2013**, *5*, 4159–4173.
- 473 (4) Magrone, T.; Russo, M. A.; Jirillo, E. Cocoa and Dark Chocolate Polyphenols: From Biology  
474 to Clinical Applications. *Front. Immunol.* **2017**, *8*, 1–13.
- 475 (5) Camps-Bossacoma, M.; Massot-Cladera, M.; Abril-Gil, M.; Franch, A.; Pérez-Cano, F. J.;  
476 Castell, M. Cocoa Diet and Antibody Immune Response in Preclinical Studies. *Front. Nutr.*  
477 **2017**, *4*, 1–14.
- 478 (6) Camps-Bossacoma, M.; Pérez-Cano, F. J.; Franch, À.; Castell, M. Gut Microbiota in a Rat  
479 Oral Sensitization Model: Effect of a Cocoa-Enriched Diet. *Oxid. Med. Cell. Longev.* **2017**,  
480 *2017*, 1–12.
- 481 (7) Pérez-Cano, F. J.; Massot-Cladera, M.; Franch, A.; Castellote, C.; Castell, M. The Effects of  
482 Cocoa on the Immune System. *Front. Pharmacol.* **2013**, *4*, 71.
- 483 (8) Ellam, S.; Williamson, G. Cocoa and Human Health. *Annu. Rev. Nutr.* **2013**, *33*, 105–128.
- 484 (9) Loffredo, L.; Perri, L.; Nocella, C.; Violi, F. Antioxidant and Antiplatelet Activity by  
485 Polyphenol-Rich Nutrients: Focus on Extra Virgin Olive Oil and Cocoa. *Br. J. Clin.*  
486 *Pharmacol.* **2017**, *83*, 96–102.
- 487 (10) Grassi, D.; Desideri, G.; Mai, F.; Martella, L.; De Feo, M.; Soddu, D.; Fellini, E.; Veneri, M.;  
488 Stamerra, C. A.; Ferri, C. Cocoa, Glucose Tolerance, and Insulin Signaling: Cardiometabolic  
489 Protection. *J. Agric. Food Chem.* **2015**, *63*, 9919–9926.
- 490 (11) Gu, Y.; Yu, S.; Lambert, J. D. Dietary Cocoa Ameliorates Obesity-Related Inflammation in  
491 High Fat-Fed Mice. *Eur. J. Nutr.* **2014**, *53*, 149–158.
- 492 (12) Cordero-Herrera, I.; Martín, M. Á.; Escrivá, F.; Álvarez, C.; Goya, L.; Ramos, S. Cocoa-Rich  
493 Diet Ameliorates Hepatic Insulin Resistance by Modulating Insulin Signaling and Glucose  
494 Homeostasis in Zucker Diabetic Fatty Rats. *J. Nutr. Biochem.* **2015**, *26*, 704–712.

- 495 (13) Min, S. Y.; Yang, H.; Seo, S. G.; Shin, S. H.; Chung, M. Y.; Kim, J.; Lee, S. J.; Lee, H. J.;  
496 Lee, K. W. Cocoa Polyphenols Suppress Adipogenesis in Vitro and Obesity in Vivo by  
497 Targeting Insulin Receptor. *Int. J. Obes.* **2013**, *37*, 584–592.
- 498 (14) Jalil, A. M. M.; Ismail, A.; Pei, P. C.; Hamid, M.; Kamaruddin, S. H. S. Effects of Cocoa  
499 Extract Containing Polyphenols and Methylxanthines on Biochemical Parameters of Obese-  
500 Diabetic Rats. *J. Sci. Food Agric.* **2009**, *89*, 130–137.
- 501 (15) Nickols-Richardson, S. M.; Piehowski, K. E.; Metzgar, C. J.; Miller, D. L.; Preston, A. G.  
502 Changes in Body Weight, Blood Pressure and Selected Metabolic Biomarkers with an  
503 Energy-Restricted Diet Including Twice Daily Sweet Snacks and Once Daily Sugar-Free  
504 Beverage. *Nutr. Res. Pract.* **2014**, *8*, 695–704.
- 505 (16) Renzo, L. D. I.; Rizzo, M.; Colica, C.; Iacopino, L.; Domino, E.; Sergi, D.; Lorenzo, A. D. E.  
506 Effects of Dark Chocolate in a Population of Normal Weight Obese Women: A Pilot Study.  
507 *Eur. Rev. Med. Pharmacol. Sci.* **2013**, *17*, 2257–2266.
- 508 (17) Martínez-López, S.; Sarriá, B.; Sierra-Cinos, J. L.; Goya, L.; Mateos, R.; Bravo, L. Realistic  
509 Intake of a Flavanol-Rich Soluble Cocoa Product Increases HDL-Cholesterol without  
510 Inducing Anthropometric Changes in Healthy and Moderately Hypercholesterolemic  
511 Subjects. *Food Funct.* **2014**, *5*, 364.
- 512 (18) Massot-Cladera, M.; Costabile, A.; Childs, C. E.; Yaqoob, P.; Franch, À.; Castell, M.; Pérez-  
513 Cano, F. J. Prebiotic Effects of Cocoa Fibre on Rats. *J. Funct. Foods* **2015**, *19*, 341–352.
- 514 (19) Ramiro-Puig, E.; Pérez-Cano, F. J.; Ramos-Romero, S.; Pérez-Berezo, T.; Castellote, C.;  
515 Permanyer, J.; Franch, A.; Izquierdo-Pulido, M.; Castell, M. Intestinal Immune System of  
516 Young Rats Influenced by Cocoa-Enriched Diet. *J. Nutr. Biochem.* **2008**, *19*, 555–565.
- 517 (20) Pérez-Berezo, T.; Franch, A.; Ramos-Romero, S.; Castellote, C.; Pérez-Cano, F. J.; Castell,  
518 M. Cocoa-Enriched Diets Modulate Intestinal and Systemic Humoral Immune Response in  
519 Young Adult Rats. *Mol. Nutr. Food Res.* **2011**, *55 Suppl 1*, S56-66.
- 520 (21) Camps-Bossacoma, M.; Abril-Gil, M.; Saldaña-Ruiz, S.; Franch, À.; Pérez-Cano, F. J.;

- 521 Castell, M. Cocoa Diet Prevents Antibody Synthesis and Modifies Lymph Node  
522 Composition and Functionality in a Rat Oral Sensitization Model. *Nutrients* **2016**, *8*, 242.
- 523 (22) Camps-Bossacoma, M.; Pérez-Cano, F. J.; Franch, À.; Castell, M. Theobromine Is  
524 Responsible for the Effects of Cocoa on the Antibody Immune Status of Rats. *J. Nutr.* **2018**,  
525 *148*, 646–671.
- 526 (23) Camps-Bossacoma, M.; Abril-Gil, M.; Franch, À.; Pérez-Cano, F. J.; Castell, M. Induction of  
527 An Oral Sensitization Model in Rats. *Clin. Immunol. Endocr. Metab. Drugs* **2014**, *1*, 89–101.
- 528 (24) Tulipani, S.; Mora-Cubillos, X.; Jáuregui, O.; Llorach, R.; García-Fuentes, E.; Tinahones, F.  
529 J.; Andres-Lacueva, C. New and Vintage Solutions to Enhance the Plasma Metabolome  
530 Coverage by LC-ESI-MS Untargeted Metabolomics: The Not-so-Simple Process of Method  
531 Performance Evaluation. *Anal. Chem.* **2015**, *87*, 2639–2647.
- 532 (25) Latif, R. Health Benefits of Cocoa. *Curr. Opin. Clin. Nutr. Metab. Care* **2013**, *16*, 669–674.
- 533 (26) Strat, K. M.; Rowley, T. J.; Smithson, A. T.; Tessem, J. S.; Hulver, M. W.; Liu, D.; Davy, B.  
534 M.; Davy, K. P.; Neilson, A. P. Mechanisms by Which Cocoa Flavanols Improve Metabolic  
535 Syndrome and Related Disorders. *J. Nutr. Biochem.* **2016**, *35*, 1–21.
- 536 (27) Rodríguez-Lagunas, M. J.; Vicente, F.; Pereira, P.; Castell, M.; Pérez-Cano, F. J.  
537 Relationship between Cocoa Intake and Healthy Status: A Pilot Study in University Students.  
538 *Molecules* **2019**, *24*, 812.
- 539 (28) Bohannon, J.; Koch, D.; Homm, P.; Driehaus, A. Chocolate with High Cocoa Content as a  
540 Weight-Loss Accelerator. *Int. Arch. Med.* **2015**, *8*, 1–8.
- 541 (29) Massot-Cladera, M.; Mayneris-Perxachs, J.; Costabile, A.; Swann, J. R.; Franch, À.; Pérez-  
542 Cano, F. J.; Castell, M. Association between Urinary Metabolic Profile and the Intestinal  
543 Effects of Cocoa in Rats. *Br. J. Nutr.* **2017**, *117*, 623–634.
- 544 (30) Osswald, H.; Schnermann, J. Methylxanthines and the Kidney. *Handb. Exp. Pharmacol.*  
545 **2011**, *200*, 391–412.
- 546 (31) Cuenca-García, M.; Ruiz, J. R.; Ortega, F. B.; Castillo, M. J. Association between Chocolate

- 547 Consumption and Fatness in European Adolescents. *Nutrition* **2014**, *30*, 236–239.
- 548 (32) Stolarczyk, E. Adipose Tissue Inflammation in Obesity: A Metabolic or Immune Response?  
549 *Curr. Opin. Pharmacol.* **2017**, *37*, 35–40.
- 550 (33) Kim, S.; Lee, M.-S.; Jung, S.; Son, H.-Y.; Park, S.; Kang, B.; Kim, S.-Y.; Kim, I.-H.; Kim,  
551 C.-T.; Kim, Y. Ginger Extract Ameliorates Obesity and Inflammation via Regulating  
552 MicroRNA-21/132 Expression and AMPK Activation in White Adipose Tissue. *Nutrients*  
553 **2018**, *10*, 1567.
- 554 (34) Matsui, N.; Ito, R.; Nishimura, E.; Yoshikawa, M.; Kato, M.; Kamei, M.; Shibata, H.;  
555 Matsumoto, I.; Abe, K.; Hashizume, S. Ingested Cocoa Can Prevent High-Fat Diet-Induced  
556 Obesity by Regulating the Expression of Genes for Fatty Acid Metabolism. *Nutrition* **2005**,  
557 *21*, 594–601.
- 558 (35) Khan, N.; Monagas, M.; Andres-Lacueva, C.; Casas, R.; Urpí-Sardà, M.; Lamuela-Raventós,  
559 R. M.; Estruch, R. Regular Consumption of Cocoa Powder with Milk Increases HDL  
560 Cholesterol and Reduces Oxidized LDL Levels in Subjects at High-Risk of Cardiovascular  
561 Disease. *Nutr. Metab. Cardiovasc. Dis.* **2012**, *22*, 1046–1053.
- 562 (36) Baba, S.; Natsume, M.; Yasuda, A.; Nakamura, Y.; Tamura, T.; Osakabe, N.; Kanegae, M.;  
563 Kondo, K. Plasma LDL and HDL Cholesterol and Oxidized LDL Concentrations Are Altered  
564 in Normo- and Hypercholesterolemic Humans after Intake of Different Levels of Cocoa  
565 Powder. *J. Nutr.* **2007**, *137*, 1436–1441.
- 566 (37) Smolders, L.; Mensink, R. P.; Boekschoten, M. V.; de Ridder, R. J. J.; Plat, J. Theobromine  
567 Does Not Affect Postprandial Lipid Metabolism and Duodenal Gene Expression, but Has  
568 Unfavorable Effects on Postprandial Glucose and Insulin Responses in Humans. *Clin. Nutr.*  
569 **2018**, *37*, 719–727.
- 570 (38) Massot-Cladera, M.; Franch, À.; Castell, M.; Pérez-Cano, F. J. Cocoa Polyphenols and Fiber  
571 Modify Colonic Gene Expression in Rats. *Eur. J. Nutr.* **2017**, *56*, 1871–1885.
- 572 (39) Klok, M. D.; Jakobsdottir, S.; Drent, M. L. The Role of Leptin and Ghrelin in the Regulation



- 573 of Food Intake and Body Weight in Humans: A Review. *Obes. Rev.* **2007**, *8*, 21–34.
- 574 (40) Pradhan, G.; Samson, S. L.; Sun, Y. Ghrelin: Much More than a Hunger Hormone. *Curr.*  
575 *Opin. Clin. Nutr. Metab. Care* **2013**, *16*, 619–624.
- 576 (41) Habegger, K. M.; Heppner, K. M.; Geary, N.; Bartness, T. J.; DiMarchi, R.; Tschöp, M. H.  
577 The Metabolic Actions of Glucagon Revisited. *Nat. Rev. Endocrinol.* **2010**, *6*, 689–697.
- 578 (42) Almoosawi, S.; Tsang, C.; Ostertag, L. M.; Fyfe, L.; Al-Dujaili, E. A. S. Differential Effect  
579 of Polyphenol-Rich Dark Chocolate on Biomarkers of Glucose Metabolism and  
580 Cardiovascular Risk Factors in Healthy, Overweight and Obese Subjects: A Randomized  
581 Clinical Trial. *Food Funct.* **2012**, *3*, 1035–1043.
- 582 (43) Rychlik, M. Pantothenic Acid Quantification by a Stable Isotope Dilution Assay Based on  
583 Liquid Chromatography-Tandem Mass Spectrometry. *Analyst* **2003**, *128*, 832–837.
- 584 (44) Boaz, S. M.; Champagne, C. D.; Fowler, M. A.; Houser, D. H.; Crocker, D. E. Water-Soluble  
585 Vitamin Homeostasis in Fasting Northern Elephant Seals (*Mirounga Angustirostris*)  
586 Measured by Metabolomics Analysis and Standard Methods. *Comp. Biochem. Physiol. - A*  
587 *Mol. Integr. Physiol.* **2012**, *161*, 114–121.
- 588 (45) Zhang, A.; Sun, H.; Yan, G.; Han, Y.; Ye, Y.; Wang, X. Urinary Metabolic Profiling  
589 Identifies a Key Role for Glycocholic Acid in Human Liver Cancer by Ultra-Performance  
590 Liquid-Chromatography Coupled with High-Definition Mass Spectrometry. *Clin. Chim. Acta*  
591 **2013**, *418*, 86–90.
- 592 (46) Curis, E.; Nicolis, I.; Moinard, C.; Osowska, S.; Zerrouk, N.; Bénazeth, S.; Cynober, L.  
593 Almost All about Citrulline in Mammals. *Amino Acids* **2005**, *29*, 177–205.
- 594 (47) Allerton, T. D.; Proctor, D. N.; Stephens, J. M.; Dugas, T. R.; Spielmann, G.; Irving, B. A. L-  
595 Citrulline Supplementation: Impact on Cardiometabolic Health. *Nutrients* **2018**, *10*, 1–24.
- 596 (48) Gostner, J. M.; Becker, K.; Croft, K. D.; Woodman, R. J.; Puddey, I. B.; Fuchs, D.; Hodgson,  
597 J. M. Regular Consumption of Black Tea Increases Circulating Kynurenine Concentrations:  
598 A Randomized Controlled Trial. *BBA Clin.* **2015**, *3*, 31–35.

- 599 (49) Keszthelyi, D.; Troost, F. J.; Masclee, A. A. M. Understanding the Role of Tryptophan and  
600 Serotonin Metabolism in Gastrointestinal Function. *Neurogastroenterol. Motil.* **2009**, *21*,  
601 1239–1249.
- 602 (50) Zapata, R. C.; Singh, A.; Ajdari, N. M.; Chelikani, P. K. Dietary Tryptophan Restriction  
603 Dose-Dependently Modulates Energy Balance, Gut Hormones, and Microbiota in Obesity-  
604 Prone Rats. *Obesity* **2018**, *26*, 730–739.

## 606 Figure captions

607 **Figure 1.** Experimental design. The nutritional intervention lasted for 7 or 18 days. After these  
608 periods, rats were deprived of food for 18 h and were then euthanized.

609 **Figure 2.** Mean motor activity from the three groups of study (white bars represent reference group  
610 (RF), grey bars represent cocoa group (CC), and striped bars represent theobromine group (TB));  
611 during days 5 to 7 (a–b) and days 9 to 14 (c–d). Values are expressed as mean  $\pm$  standard error (n =  
612 6–7). Statistical difference: \*  $p \leq 0.05$  vs RF group by one-way ANOVA.

613 **Figure 3.** Fecal fat content and pH from the three groups of study (white bars represent reference  
614 group (RF), grey bars represent cocoa group (CC), and striped bars represent theobromine group  
615 (TB)). Values are expressed as mean  $\pm$  standard error (n = 6–7). Statistical difference: \*  $p \leq 0.05$  vs  
616 RF group, and  $\delta p \leq 0.05$  vs CC group by one-way ANOVA.

617 **Figure 4.** Liver gene expression. Liver gene expression from the three groups of study (white bars  
618 represent reference group (RF), grey bars represent cocoa group (CC); and striped bars represent  
619 theobromine group (TB)) in the 7 days-lasting experimental design. Values are expressed as mean  $\pm$   
620 standard error (n = 6–7). Statistical difference: \*  $p \leq 0.05$  vs RF group, and  $\delta p \leq 0.05$  vs CC group by  
621 Mann-Whitney U test.

622 **Figure 5.** Adipose tissue gene expression. Liver gene expression from the three groups of study  
623 (white bars represent reference group (RF); grey bars represent cocoa group (CC); and striped bars  
624 represent theobromine group (TB) in the 7-day experimental design. Values are expressed as mean  
625  $\pm$  standard error (n = 6–7). Statistical difference: \*  $p \leq 0.05$  vs RF group by Mann-Whitney U test.

626 **Figure 6.** Metabolic variables. Ghrelin, glucagon and insulin concentration from the three groups of  
627 study (white bars represent reference group (RF), grey bars represent cocoa group (CC), and striped  
628 bars represent theobromine group (TB)) in the 19-day experimental design. Values are expressed as  
629 mean  $\pm$  standard error (n = 6–7). Statistical difference: \*  $p \leq 0.05$  vs RF group by one-way ANOVA.

630 **Figure 7.** OSC-PLS-DA scores plots (PC1 versus PC2) of study samples. Plasma samples from  
631 reference group are indicated in blue, cocoa group in yellow and theobromine group in red.

632 **Figure 8.** Tentatively identified metabolites. Plasma concentrations of exogenous (theobromine)  
633 and endogenous (pantothenic acid, glycocholic acid, citrulline, CEDHP and HIAA) metabolites in  
634 the three groups of study (white bars represent reference group (RF), grey bars represent cocoa  
635 group (CC); and striped bars represent theobromine group (TB)) in the 7-day experimental design.  
636 Values are expressed as mean  $\pm$  standard error (n = 6–7). Statistical difference: \*  $p \leq 0.05$  vs RF  
637 group by one-way ANOVA.

638 **Figure 9.** Heatmap representation of the association between metabolites (in rows) and some  
639 metabolic and biochemical variables (in columns). Blue color indicates a positive correlation and  
640 red color displays a negative correlation. Color intensity and circle size are proportional to the  
641 correlation coefficients. All displayed correlations were statistically significant (FDR < 0.05).

**Table 1. Morphometric measurements.** Initial body weight, body weight gain, body length (with and without tail), body mass index, Lee's index, mean food and water intake, food efficiency, rectal temperature and the relative weight of inguinal and retroperitoneal fat, heart, liver, kidney, small intestine and colon and caecum in the two study time points and from the three groups of study (reference group (RF)); cocoa group (CC), and theobromine group (TB)). Values are expressed as mean  $\pm$  standard error (n = 6–7). Statistical difference: \*  $p \leq 0.05$  vs RF group, and  $\delta p \leq 0.05$  vs CC group by one-way ANOVA.

Variable	7-days diet group			18-days diet group		
	RF	CC	TB	RF	CC	TB
Initial body weight (g)	80.08 $\pm$ 2.25	79.98 $\pm$ 1.86	80.62 $\pm$ 2.17	80.23 $\pm$ 2.81	79.82 $\pm$ 1.99	79.22 $\pm$ 1.14
Body weight gain (g)	35.30 $\pm$ 1.61	23.43 $\pm$ 0.60*	23.03 $\pm$ 0.88*	80.90 $\pm$ 2.98	51.53 $\pm$ 0.65*	52.11 $\pm$ 5.31*
Body length (cm)	28.22 $\pm$ 0.32	27.90 $\pm$ 0.29	27.70 $\pm$ 0.12	29.51 $\pm$ 0.28	26.91 $\pm$ 0.23*	27.10 $\pm$ 0.52*
Body length without tail (cm)	15.03 $\pm$ 0.16	15.23 $\pm$ 0.16	14.98 $\pm$ 0.14	16.50 $\pm$ 0.14	14.96 $\pm$ 0.17*	14.97 $\pm$ 0.23*
Body mass index	0.13 $\pm$ 0.00	0.11 $\pm$ 0.00*	0.12 $\pm$ 0.00*	0.11 $\pm$ 0.01	0.10 $\pm$ 0.00*	0.10 $\pm$ 0.00*
Lee's index	3.11 $\pm$ 0.00	2.93 $\pm$ 0.00*	2.99 $\pm$ 0.00*	2.81 $\pm$ 0.00	2.78 $\pm$ 0.00	2.79 $\pm$ 0.00
Mean food intake (g/100 g rat/day)	15.34 $\pm$ 0.24	16.27 $\pm$ 0.24*	15.11 $\pm$ 0.14 $\delta$	13.75 $\pm$ 0.15	13.77 $\pm$ 0.22	13.46 $\pm$ 0.20
Mean water intake (g/100 g rat/day)	12.20 $\pm$ 0.70	30.10 $\pm$ 1.88*	27.93 $\pm$ 2.78*	11.28 $\pm$ 0.18	20.54 $\pm$ 0.41*	17.67 $\pm$ 1.17* $\delta$
Food efficiency	0.34 $\pm$ 0.01	0.30 $\pm$ 0.01*	0.31 $\pm$ 0.01*	0.35 $\pm$ 0.01	0.30 $\pm$ 0.01*	0.30 $\pm$ 0.00*
Rectal temperature (°C)	35.85 $\pm$ 0.13	36.12 $\pm$ 0.11	36.03 $\pm$ 0.17	36.91 $\pm$ 0.34	37.3 $\pm$ 0.26	36.49 $\pm$ 0.30
<b>Relative weight (%)</b>						

Inguinal fat	0.15 ± 0.02	0.13 ± 0.01	0.11 ± 0.01	0.29 ± 0.03	0.29 ± 0.03	0.19 ± 0.02* <sup>δ</sup>
Retroperitoneal fat	0.13 ± 0.02	0.05 ± 0.02*	0.07 ± 0.02*	0.11 ± 0.01	0.04 ± 0.01*	0.03 ± 0.00*
Heart	0.55 ± 0.02	0.57 ± 0.02	0.54 ± 0.02	0.58 ± 0.01	0.65 ± 0.02*	0.59 ± 0.02
Liver	3.82 ± 0.05	3.66 ± 0.09	3.66 ± 0.05	4.12 ± 0.06	3.80 ± 0.05*	3.46 ± 0.17* <sup>δ</sup>
Kidney (one)	0.48 ± 0.02	0.57 ± 0.03	0.52 ± 0.01	0.49 ± 0.01	0.51 ± 0.01	0.52 ± 0.03
Small intestine	3.31 ± 0.03	3.67 ± 0.07*	3.62 ± 0.05*	4.19 ± 0.12	4.80 ± 0.20*	4.83 ± 0.14*
Colon and caecum	1.49 ± 0.05	2.42 ± 0.13*	2.66 ± 0.13*	0.98 ± 0.03	1.36 ± 0.03*	1.61 ± 0.06* <sup>δ</sup>

**Table 2. Biochemical variables measurements.** Fold increase of total cholesterol, HDL-c, LDL-c, serum and hepatic TG, and glucose from the three groups of study (reference group (RF), cocoa group (CC), theobromine group (TB)) at day 8 and 19. Values are expressed as mean ± standard error (n = 6-7). Statistical difference: \* p≤0.05 vs RF group by one-way ANOVA.

Variable	7-days effect			18-days effect		
	RF	CC	TB	RF	CC	TB
Total cholesterol	1.00 ± 0.06	0.85 ± 0.03*	0.86 ± 0.02*	1.00 ± 0.01	1.04 ± 0.03	0.98 ± 0.02
HDL-c	1.00 ± 0.08	1.41 ± 0.07*	1.39 ± 0.08*	1.00 ± 0.05	1.34 ± 0.05*	1.24 ± 0.09*
LDL-c	1.00 ± 0.07	0.76 ± 0.04*	0.78 ± 0.03*	1.00 ± 0.01	1.00 ± 0.03	0.95 ± 0.03
Plasma TG	1.00 ± 0.08	1.17 ± 0.09	1.13 ± 0.12	1.00 ± 0.11	0.83 ± 0.07	0.54 ± 0.05*
Hepatic TG	1.00 ± 0.02	0.35 ± 0.10*	0.12 ± 0.06*	1.00 ± 0.10	0.35 ± 0.02*	0.34 ± 0.03*
Glucose	1.00 ± 0.06	1.10 ± 0.07	1.02 ± 0.06	1.00 ± 0.23	2.09 ± 0.40*	2.45 ± 0.43*



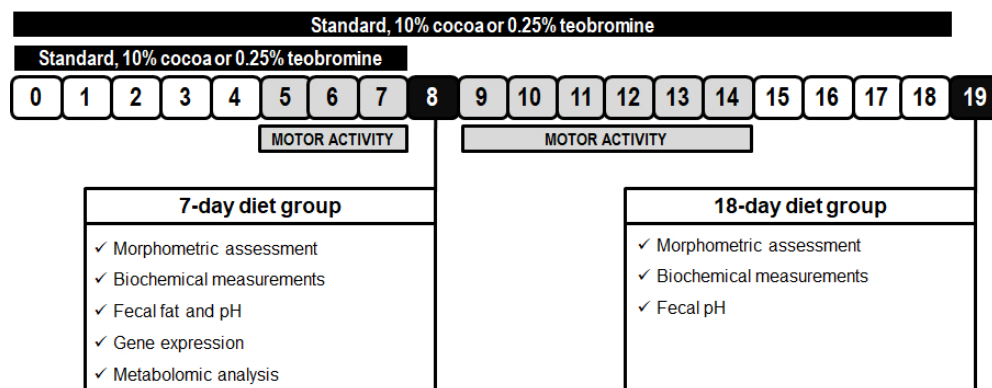


Figure 1

321x143mm (72 x 72 DPI)



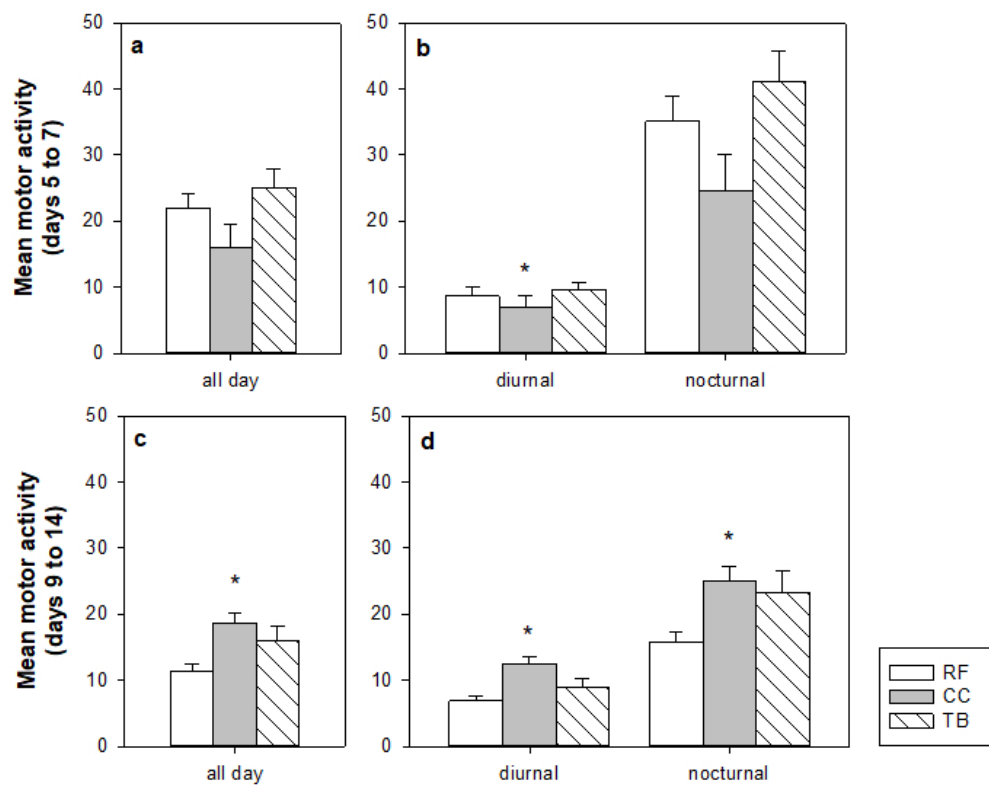


Figure 2

242x200mm (72 x 72 DPI)

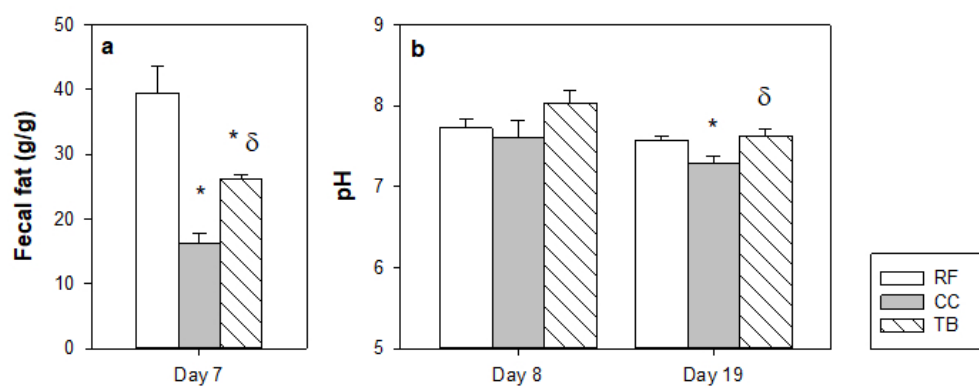


Figure 3

247x104mm (72 x 72 DPI)

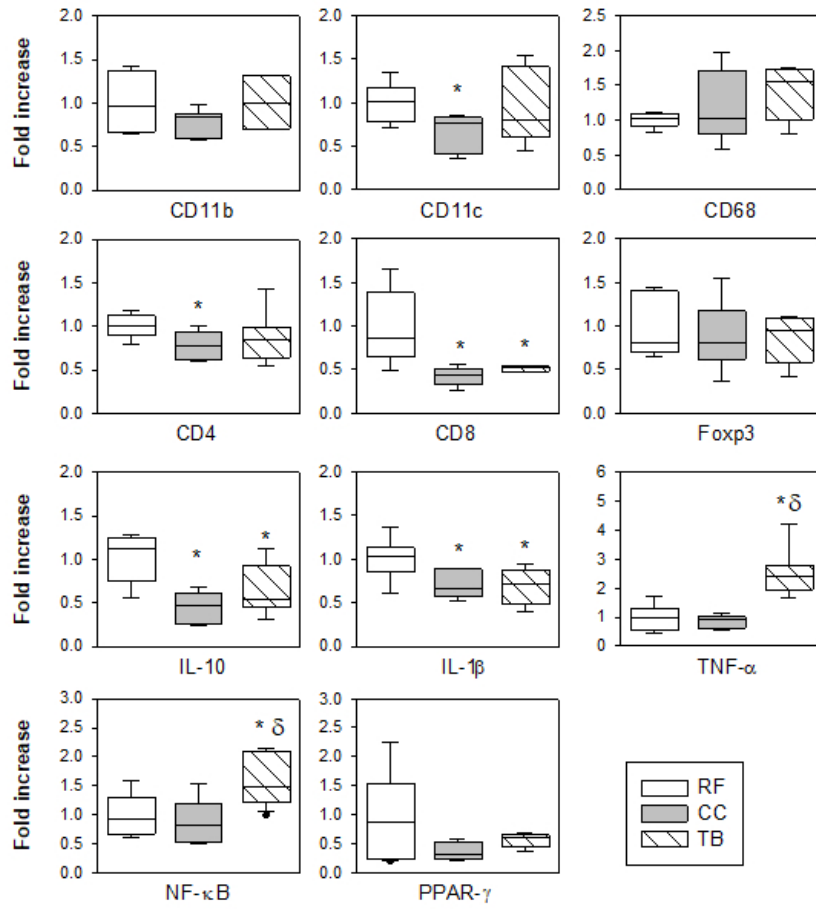


Figure 4

230x222mm (72 x 72 DPI)

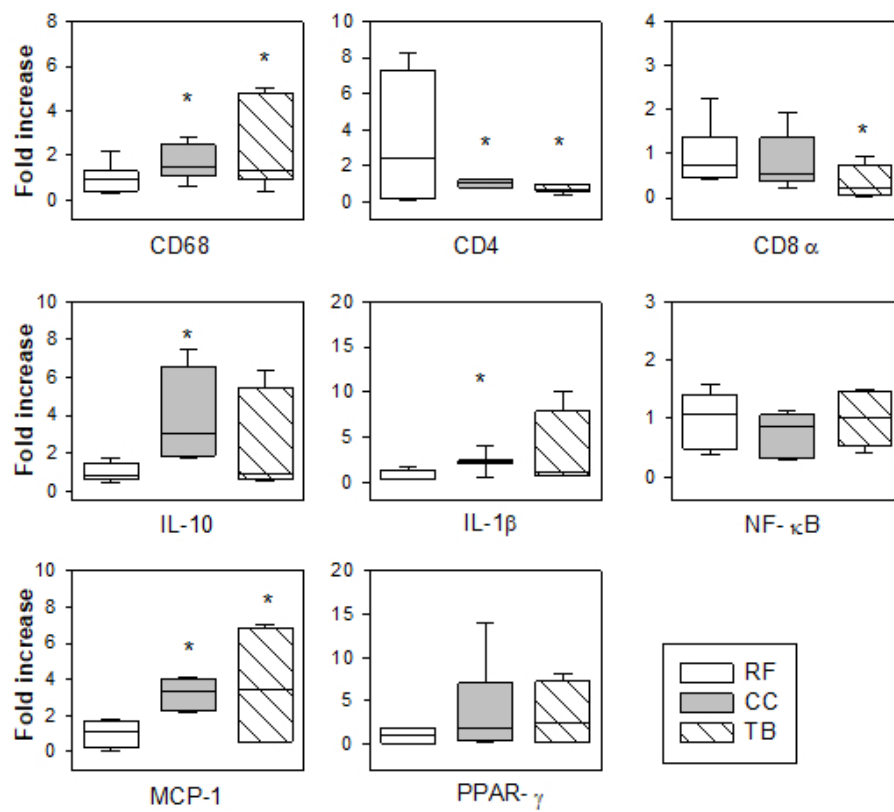


Figure 5

201x164mm (72 x 72 DPI)

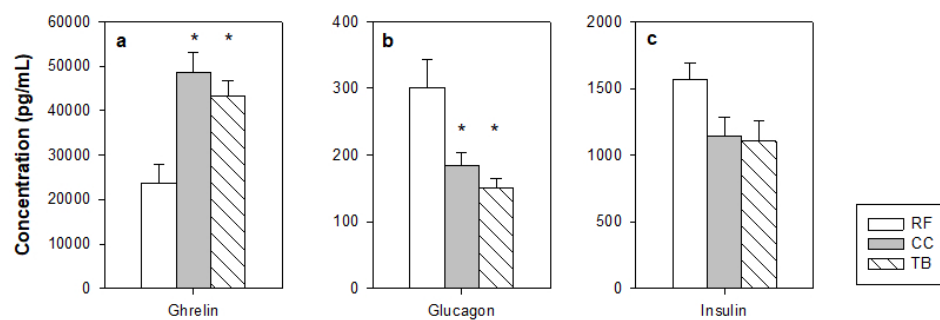


Figure 6

299x128mm (72 x 72 DPI)

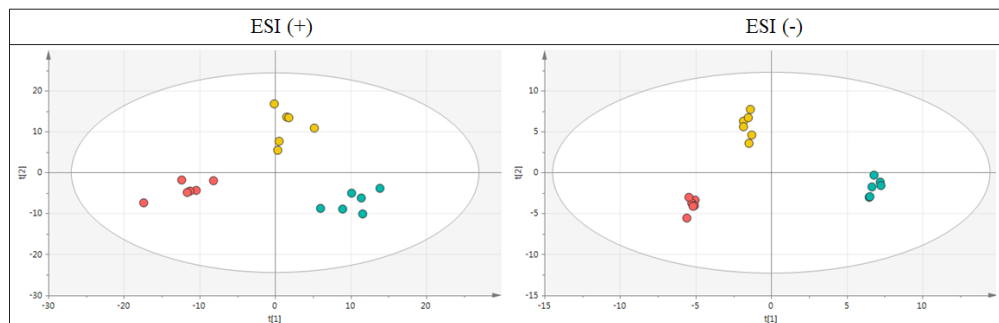


Figure 7

408x130mm (72 x 72 DPI)

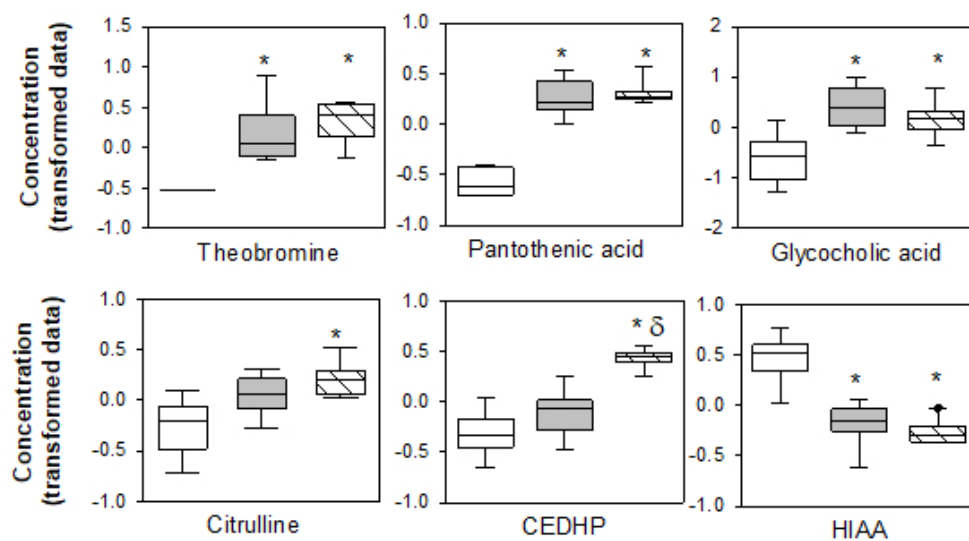


Figure 8

196x109mm (72 x 72 DPI)

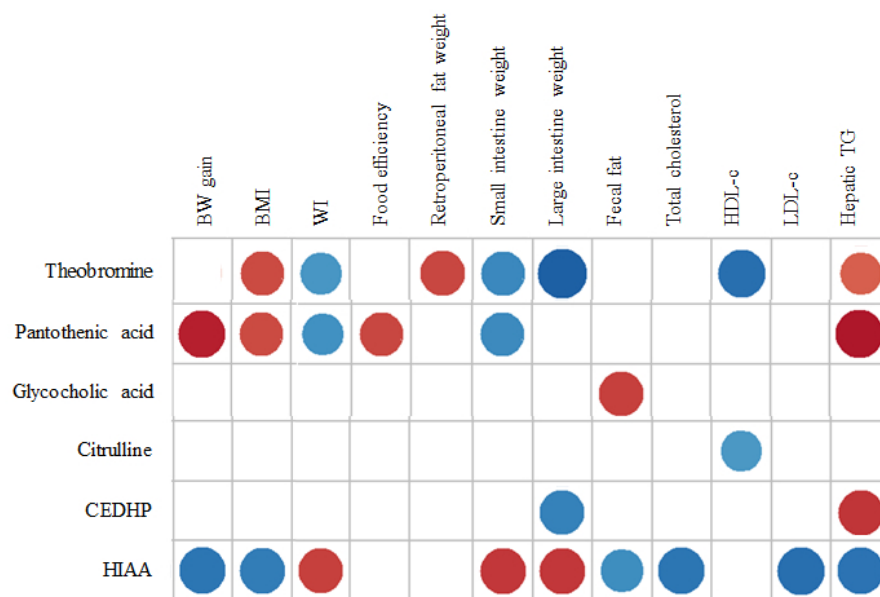


Figure 9

273x178mm (72 x 72 DPI)