

1

2 **Article Title: Interpreting historical, botanical, and geological evidence**  
 3 **to aid preparations for future floods**

4

5 **Article Type:**

6  OPINION

8  PRIMER

10  OVERVIEW

7  ADVANCED REVIEW

9  FOCUS ARTICLE

11  SOFTWARE FOCUS

12 **Authors:**

Bruno Wilhelm*, 0000-0002-0555-1915, University Grenoble Alpes, CNRS, IRD, G-INP, Institute for Geosciences and Environmental research, Grenoble, France, <a href="mailto:bruno.wilhelm@univ-grenoble-alpes.fr">bruno.wilhelm@univ-grenoble-alpes.fr</a>
Juan Antonio Ballesteros Cánovas, Climatic Change Impacts and Risks in the Anthropocene (C-CIA), Institute for Environmental Sciences, University of Geneva, Geneva, Switzerland; Dendrolab.ch, Department of Earth Sciences, University of Geneva, Geneva, Switzerland, <a href="mailto:Juan.Ballesteros@unige.ch">Juan.Ballesteros@unige.ch</a>
Neil Macdonald, Department of Geography and Planning, School of Environmental Sciences, University of Liverpool, Liverpool, UK, <a href="mailto:Neil.Macdonald@liverpool.ac.uk">Neil.Macdonald@liverpool.ac.uk</a>
Willem H.J. Toonen, Department of Geography and Earth Sciences, Aberystwyth University, Penglais Campus, Aberystwyth, Ceredigion, United Kingdom; Egyptology Department, Faculty of Arts, Katholieke Universiteit Leuven, Leuven, Belgium, <a href="mailto:w.h.j.toonen@gmail.com">w.h.j.toonen@gmail.com</a>
Victor Baker, Department of Hydrology and Atmospheric Sciences, University of Arizona, Tucson, Arizona, USA, <a href="mailto:baker@email.arizona.edu">baker@email.arizona.edu</a>
Mariano Barriendos, Department of History and Archaeology, University of Barcelona, 08001 Barcelona, Spain, <a href="mailto:barriendos@telefonica.net">barriendos@telefonica.net</a>
Gerardo Benito, National Museum of Natural Sciences, Spanish Research Council (CSIC), Serrano 115 bis, 28006 Madrid, Spain, <a href="mailto:benito@mncn.csic.es">benito@mncn.csic.es</a>
Achim Brauer - GFZ German Research Centre for Geosciences, Section 5.2 CLimate Dynamics and Landscape Evolution, D-14473 Potsdam, Germany, <a href="mailto:brau@gfz-potsdam.de">brau@gfz-potsdam.de</a>
Juan Pablo Corella, Department of Atmospheric Chemistry and Climate, Institute of Physical Chemistry Rocasolano, CSIC, Serrano 119, 28006, Madrid, Spain, <a href="mailto:pablo.corella@mncn.csic.es">pablo.corella@mncn.csic.es</a>
Rhawn Denniston, Department of Geology, Cornell College, Mount Vernon, Iowa, USA, <a href="mailto:rdenniston@cornellcollege.edu">rdenniston@cornellcollege.edu</a>
Rüdiger Glaser, Geographie, University of Freiburg, Germany, <a href="mailto:Ruediger.glaser@geographie.uni-freiburg.de">Ruediger.glaser@geographie.uni-freiburg.de</a>
Monica Ionita, Alfred Wegener Institute Helmholtz Center for Polar and Marine, <a href="mailto:Monica.Ionita@awi.de">Monica.Ionita@awi.de</a>
Michael Kahle, Geographie, University of Freiburg, Germany, <a href="mailto:michael.kahle@mail.uni-freiburg.de">michael.kahle@mail.uni-freiburg.de</a>
Tao Liu, Department of Hydrology and Atmospheric Sciences J.W. Harshbarger Building, Room 218, 1133 E. James E. Rogers Way, University of Arizona, Tucson, Arizona 85721-0011 USA, <a href="mailto:liutao@email.arizona.edu">liutao@email.arizona.edu</a>

Marc Luetscher - Swiss Institute for Speleology and Karst Studies (SISKA); University of Innsbruck, Institute of Geology, Innsbruck, Austria, <a href="mailto:marc.luetscher@uibk.ac.at">marc.luetscher@uibk.ac.at</a>
Mark Macklin - School of Geography and Lincoln Centre for Water and Planetary Health, University of Lincoln, Brayford Pool, Lincoln, UK; Innovative River Solutions, Institute of Agriculture and Environment, Massey University, Private Bag 11 222, Palmerston North, 4442, New Zealand, <a href="mailto:mmacklin@lincoln.ac.uk">mmacklin@lincoln.ac.uk</a>
Manfred Mudelsee, Climate Risk Analysis, Kreuzstrasse 27, Heckenbeck, 37581 Bad Gandersheim, Germany; Alfred Wegener Institute Helmholtz Centre for Polar and Marine Research, Bussestrasse 24, 27570 Bremerhaven, Germany, <a href="mailto:mudelsee@climate-risk-analysis.com">mudelsee@climate-risk-analysis.com</a>
Samuel Munoz, Department of Geology & Geophysics, Woods Hole Oceanographic Institution, Woods Hole, Massachusetts, USA; Department of Marine & Environmental Sciences, Northeastern University, Boston, Massachusetts USA; Department of Civil & Environmental Engineering, Northeastern University, Boston, Massachusetts USA, <a href="mailto:s.munoz@northeastern.edu">s.munoz@northeastern.edu</a>
Lothar Schulte, Department of Physical and Regional Geography and ICREA, University of Barcelona, Barcelona, Spain, <a href="mailto:schulte@ub.edu">schulte@ub.edu</a>
Scott St. George, Department of Geography, Environment, and Society, University of Minnesota, Minneapolis, Minnesota, USA, <a href="mailto:stgeorge@umn.edu">stgeorge@umn.edu</a>
Markus Stoffel, Climatic Change Impacts and Risks in the Anthropocene (C-CIA), Institute for Environmental Sciences, University of Geneva, Geneva, Switzerland; Dendrolab.ch, Department of Earth Sciences, University of Geneva, Geneva, Switzerland; Department F.-A. Forel for Aquatic and Environmental Sciences, University of Geneva, Geneva, Switzerland, <a href="mailto:Markus.Stoffel@unige.ch">Markus.Stoffel@unige.ch</a>
Wetter Oliver - Historisches Institut und Oeschger Center for Climate Change Research, University of Bern, Bern, Switzerland, <a href="mailto:oliver.wetter@hist.unibe.ch">oliver.wetter@hist.unibe.ch</a>

13

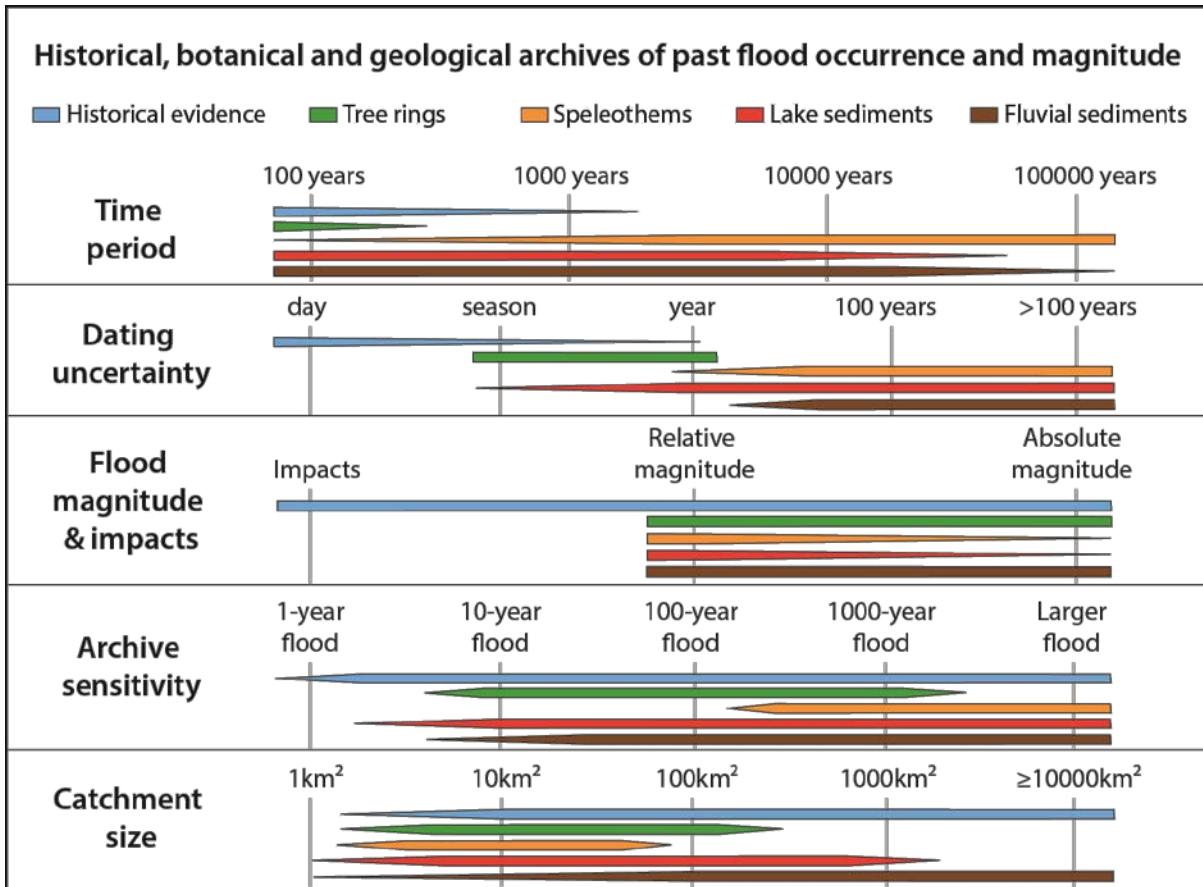
14 Conflict of interest: The authors have declared no conflicts of interest for this article

15 **Abstract**

16 River flooding is among the most destructive of natural hazards globally, causing widespread loss of  
17 life, damage to infrastructure and economic deprivation. Societies are currently under increasing  
18 threat from such floods, predominantly from increasing exposure of people and assets in flood-  
19 prone areas, but also as a result of changes in flood magnitude, frequency and timing. Accurate flood  
20 hazard and risk assessment are therefore crucial for the sustainable development of societies  
21 worldwide. With a paucity of hydrological measurements, evidence from the field offers the only  
22 insight into truly extreme events and their variability in space and time. Historical, botanical and  
23 geological archives have increasingly been recognised as valuable sources of extreme flood event  
24 information. These different archives are here reviewed with a particular focus on the recording  
25 mechanisms of flood information, the historical development of the methodological approaches and  
26 the type of information that those archives can provide. These studies provide a wealthy dataset of  
27 hundreds of historical and palaeoflood series, whose analysis reveals a noticeable dominance of  
28 records in Europe. After describing the diversity of flood information provided by this dataset, we  
29 identify how these records have improved and could further improve flood hazard assessments and,  
30 thereby, flood management and mitigation plans.

31

32 Graphical/Visual Abstract and Caption



33

34 Historical, botanical and geological archives offer unique insight into truly extreme flood events and  
 35 their variability in space and time, thanks to the long timeframe they document. The evidence  
 36 contained within these underutilized archives has the potential to improve flood hazard assessments  
 37 that are crucial for the sustainable development of societies.

38

39 **Introduction**

40 Several regions of the world have recently experienced catastrophic flooding, including central  
 41 Europe, eastern Russia, and northern China in 2013, and the United States and southern Asia in  
 42 2017. Flooding is the most common type of natural disaster (43% of all disasters for period 1994-  
 43 2013; CRED, 2015), affects more people worldwide than any other natural hazards (2.3 billion people  
 44 for the period 1994-2013; *ibid.*), and results in economic losses amounting to approximately 50  
 45 billion USD per year on average (Aon Benfield, 2016). These impacts illustrate the vulnerability of  
 46 modern societies to hydrological extremes, emphasizing the need for improvement in our ability to  
 47 predict the occurrence of such extreme floods (Blöschl et al., 2013).

48 Vulnerability to riverine flooding is growing as a result of increasing exposure of people and  
 49 infrastructure in flood-prone areas (Kundzewicz et al., 2014). Climate change is expected to

50 exacerbate flood hazard through an intensification of the hydrological cycle, which will likely alter  
51 the magnitude, frequency, and/or seasonality of riverine flooding (Seneviratne et al., 2012; Blöschl  
52 et al., 2017), although still considerable uncertainty remains over the direction and strength of these  
53 shifts (Kundzewicz et al., 2016). Accurate assessments of current and projected flood hazard are thus  
54 critical for societies to prepare for future events.

55 Of growing concern to hydrologists is the need to understand flood hazard and its variability through  
56 time and in different catchments (e.g. Hall et al., 2014; Merz et al., 2014). Addressing this need  
57 remains highly challenging because instrumental data recorded at gauging stations are  
58 geographically sparse, discontinuous, affected to varying degrees by human modifications to  
59 drainage networks, and rarely span more than a century (Seneviratne et al., 2012; Hall et al., 2014).  
60 Over the past few decades, the field of palaeoflood hydrology has expanded to include a variety of  
61 historical, botanical, and geological archives that provide critical information describing past floods,  
62 particularly high magnitude events that occurred prior to systematic instrumental records (Baker,  
63 2008). Despite their demonstrated ability to improve estimates of flood risk, historical and  
64 palaeoflood hydrology remains underutilized in flood hazard assessments (Benito et al., 2004;  
65 Kjeldsen et al., 2014). In this study, we (i) provide an overview of available archives that provide  
66 information about past floods and (ii) describe the ability of these archives to improve the  
67 assessment of flood hazards.

## 68 **THE FLOOD ARCHIVE**

69 Hereafter, the various flood archives are described with a particular focus on the recording  
70 mechanisms of flood information, the historical development of the methodological approaches and  
71 the type of information that those archives can provide.

### 72 **Historical documents**

73 Historical records of floods can be found in a wide range of forms, such as annals, chronicles,  
74 memorial books, memoirs, newspapers, journals, diaries, accounting books or weather journals,  
75 pamphlets, flood maps, images (paintings, engravings and photographs) and epigraphic marks  
76 (Brázdil et al., 2006; Glaser et al., 2010). With respect to the generation of these records one needs  
77 to differentiate between individual and institutional origins (Pfister et al., 2009). Individual records  
78 are shaped by the social background, the motivations and preferences of the record producers  
79 (authors). Their temporal scope is limited, at least the one in which they can be considered as  
80 contemporaries to the events they describe, to the lifetime of the observer. Institutional sources on  
81 the other hand are produced by governments or other bodies and institutions, e.g. the church. These  
82 institutional bodies were typically not interested in describing weather and climate or single extreme  
83 events, but kept records in order to document their activities and in doing so, they indirectly  
84 recorded climate and weather related aspects such as floods. The temporal range of historical flood  
85 information found in documentary sources can range from several millennia to the near  
86 contemporary, though the majority of the studies focus on the period since ca. AD 1250 (Brázdil et  
87 al., 2012), reflecting increased preservation and recording frequency. Record preservation and initial  
88 recording are a function of several human factors, including the presence of literate individuals,  
89 purpose or cause of interest in the flood event and document preservation, as such the earliest

90 accounts are often, but not exclusively, based in urban areas with either monastic/religious houses,  
91 political centres or are important trade locations (Sangster et al., 2018).

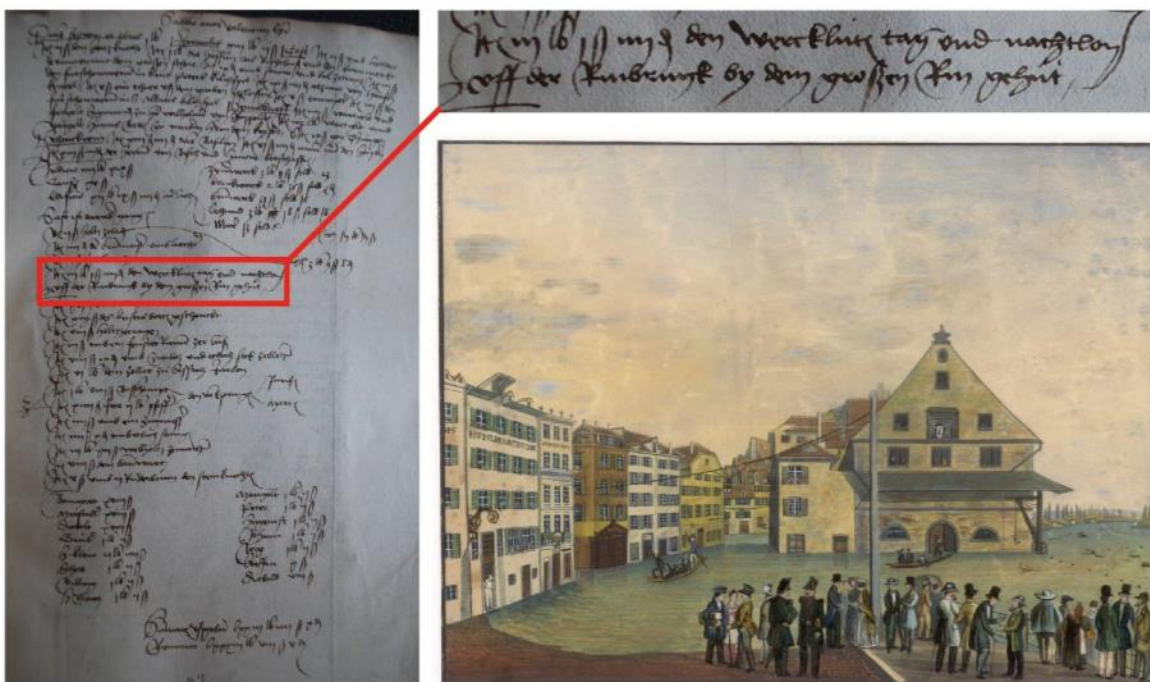
92 Historical flood records have long been of interest, with many city histories written in the eighteenth  
93 and nineteenth centuries across Europe collating records of memorable past flood events, though  
94 these were not verified to current standards. Some of the earliest analytical studies were  
95 undertaken by engineers, in attempting to determine levels for structure design e.g. bridges and  
96 quays or in the aftermath of catastrophic flood events (Pötzsch 1784). The discipline of historical  
97 hydrology has developed extensively within the last couple of decades (Benito et al., 2015a). Early  
98 historical flood studies were often not published, appearing instead as grey literature or internal  
99 reports (e.g. Potter, 1964). The statistical incorporation of historical flood information into flood  
100 frequency analysis was initially addressed by Leese (1973) and developed further by Stedinger and  
101 Cohn (1986), with a later expansion and development of new approaches and techniques for the  
102 analysis of historical and augmented flood series (see Salinas et al., 2016). In recent years, the  
103 development of online databases and resources (e.g. the British Hydrological Society's "Chronology  
104 of British Hydrological Events", <http://cbhe.hydrology.org.uk>; the French "Le répertoire des repères  
105 de crues", <https://www.reperesdecruces.developpement-durable.gouv.fr>; the French-German  
106 "Observatoire Régional des Risques d'inondation", <http://orrion.fr/#>; the Swiss "Euro-Climhist  
107 database", <https://www.euroclimhist.unibe.ch/de> and the international [www.tambora.org](http://www.tambora.org)) have  
108 facilitated greater adoption of historical analysis and reduced the time consuming nature of  
109 historical archive research, though careful analysis of materials are still required. The development  
110 of such databases has been somewhat piecemeal, reflecting national developments and/or projects,  
111 resulting in different forms of database.

112 Whilst many studies focus on a single flood event (e.g. Demarée, 2006), single catchments or  
113 locations (e.g. Kiss and Laszlovszky, 2013), others have examined historical flooding at regional or  
114 national scales (e.g. Macdonald and Sangster, 2017), each providing an opportunity to explore  
115 different questions. Historical records can provide a wealth of information. They stand apart from  
116 palaeohydrological approaches as they contain information on the physical characteristics, but also  
117 often include information concerning the human consequences of floods. Historical sources may  
118 permit a detailed analysis of the development, course and consequences of a single, or multiple  
119 flood events, including information detailing the underlying meteorological causes, type and  
120 dimension of damage and societal impacts and subsequent reactions. The breadth of material  
121 included within the historical records can be assessed at a high spatio-temporal resolution, enabling  
122 such information to be used in the re-evaluation and estimation of risk, vulnerability and resilience.  
123 Where single sites or regions are analyzed over long timescales, additional aspects including flood  
124 magnitudes (Wetter et al., 2011), flood seasonality (Macdonald, 2012), hydraulic channel changes  
125 (Herget and Meurs, 2010), land-use impact (Böhm and Wetzels, 2006) and flood generating  
126 mechanisms (Jacobeit et al., 2003) may be examined through the historical period, improving  
127 current understanding of the largest flood events (Benito et al., 2015a). Institutional records  
128 containing flood information often have significantly increased "observation skills" towards smaller  
129 and "normal" flood events compared to individual records (Wetter, 2017).

130 Methods in historical flood research are based on hermeneutic as well as quantitative approaches  
131 and are interdisciplinary in nature. Following the identification of sources, a critical source analysis

132 by hermeneutic principles is applied, addressing the contemporary socio-political circumstances and  
 133 the authors' intention, education and perception (Himmelsbach et al., 2015). The exercise of  
 134 historical sources critique (e.g. Arnold, 2001) for historical climatological and historical hydrological  
 135 purposes includes the correction of calendar style (Julian to Gregorian) and the distinction between  
 136 contemporary and non-contemporary sources. Non-contemporary sources generally need to be  
 137 treated as sources of substantial lower reliability and should only be included for analysis if they  
 138 provide additional and coherent information based on contemporary sources, of an already known  
 139 event. The information may then be used to either reconstruct water level, extent, discharge (Fig. 1)  
 140 or be coded into semi-quantitative indices, if required, and calibrated with early-instrumental and  
 141 more recent measurements to derive objective and quantitative time series. Whilst there are issues  
 142 concerning spurious and erroneous recording, good archival practice and triangulation help address  
 143 these concerns, improving the reliability of the derived series (Barriendos and Rodrigo, 2006). The  
 144 last two decades have witnessed a rapid expansion in the use of historical flood information in  
 145 understanding extreme flood events. Historical records are a valuable resource that can help bridge  
 146 between instrumental and palaeohydrological data (Benito et al., 2005), providing a mechanism by  
 147 which extreme floods, events of a magnitude which may not have occurred within the instrumental  
 148 period, can be calibrated to those contained within palaeohydrological sequences (Werritty et al.,  
 149 2006). The potential for augmentation of instrumental (often gauged) data with historical  
 150 information provides considerable advantages in risk analysis of extreme events and is increasingly  
 151 being adopted across Europe as good practice (Kjeldsen et al., 2014).

152



153  
 154 **Figure 1.** Compilation of different documentary flood evidence. (Left) Extract from the books of  
 155 weekly expenditures of the City of Basel (Wochenausgabenbücher der Stadt Basel; 1401-1799;  
 156 Basler Staatsarchiv; Signatur: StaBS Finanz G17) which provide indirect information about past floods  
 157 such as flood-related costs for guarding a bridge from driftwood during a flood event (top) “paid 3 lb

158 1 s for day and night wages for the craftsmen on the bridge”. (Right) Painting of the “great Rhine”  
159 flood event of 18 September 1852 by Louis Dubois (Basler Staatsarchiv; Signatur: StaBS XIII 323)

160

## 161 **Tree rings**

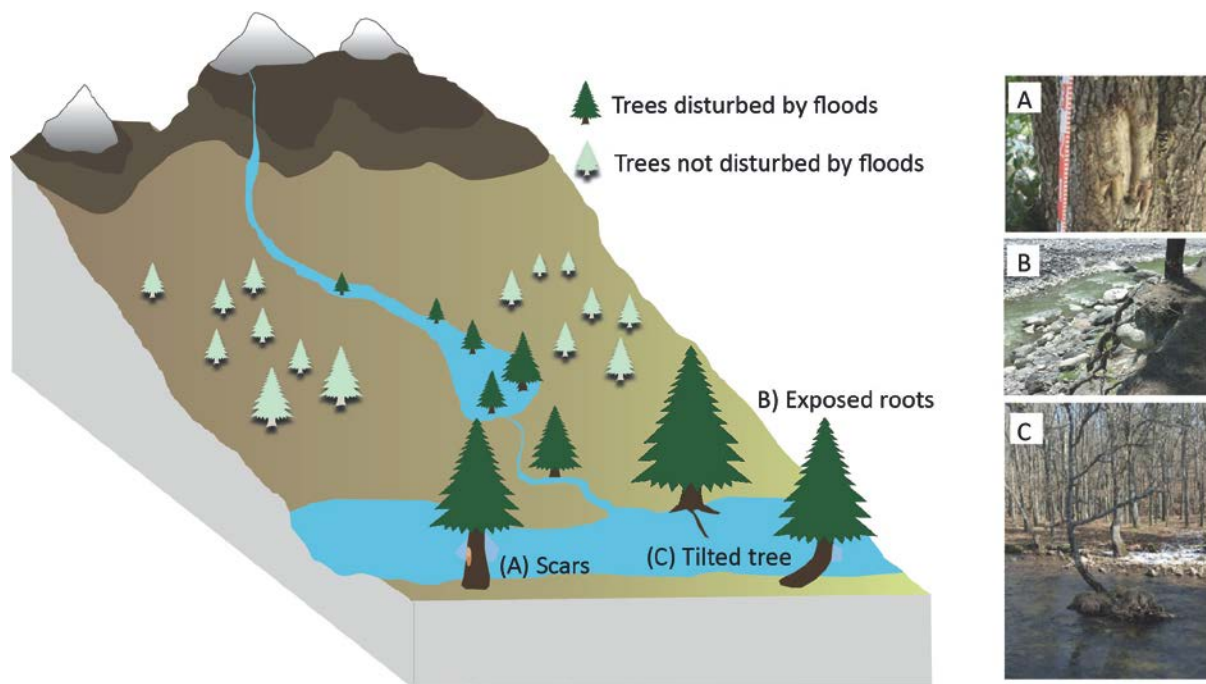
162 Trees preserve evidence of past floods because floodwaters have a direct effect on tree growth,  
163 form and survival. The use of trees as palaeoflood indicators is based on the ‘process–event–  
164 response’ concept outlined by Shroder (1978), where the ‘process’ represents a specific flood, the  
165 ‘event’ is the resulting tree disturbance (i.e. abrasion scars, abnormal stem morphologies, eroded  
166 roots, tilted stems, standing dead trees, etc.) and the ‘response’ refers to the physiological response  
167 of trees to the disturbance, which results in a specific anatomical imprint created within the tree’s  
168 annual growth rings (Stoffel and Corona, 2014; Ballesteros-Canovas et al., 2015a). Scars on tree  
169 trunks are the most common evidence of past flood activity in trees. Scars are caused by the impact  
170 and abrasion of debris and wood transported during floods. Injuries caused by scars leave on tree-  
171 rings a variety of growth and anatomical signatures which depend on the species, such as traumatic  
172 resin ducts, changes in vessel size, callus tissues, etc. (Ballesteros-Canovas et al., 2010, Arbella et  
173 al., 2012). These features can be used to identify the year of past floods, and sometimes even  
174 determine the season of flooding (Stoffel and Corona, 2014). Thus, the height of scars is interpreted  
175 as palaeostage indicator of a flood and can be used to derive peak discharge estimations  
176 (Ballesteros-Canovas et al., 2011a, 2011b). Floods also tilt trees when the hydrodynamic pressure  
177 induced by high flows exceeds the stem elasticity and root-plate system anchorage. Since tilted trees  
178 will compensate their deviation of the vertical growth by forming reaction wood and eccentric  
179 growth (Timell, 1986), they can be used as a proxy for past floods (Sigafos, 1964; Gottesfeld and  
180 Gottesfeld, 1990), but also as a means to estimate flow discharge (Ballesteros-Canovas et al., 2014).  
181 Other palaeoflood evidence recorded by trees include: (i) abrupt decreases in tree-ring widths due  
182 to trees being partially buried by fluvial sediments, which limits their nutrient supplies and ability to  
183 take in water (Friedman et al., 2005; Kogelnig et al., 2013); (ii) wood anatomical changes in roots  
184 caused by their exposure due to bank erosion (Malik, 2006), and (iii) anatomical abnormalities  
185 produced when trees are inundated for several weeks during the early growing season (St. George et  
186 al., 2002; Wertz et al., 2013).

187 The potential for flood-affected trees to act as botanical archives of past floods was first described  
188 by Sigafos (1961) during his work on the Potomac River near Washington, D.C (USA) to extend flow  
189 records for hazard assessments. This approach was then extended to the northern part of California  
190 to provide a 400-year flood chronology (Helly and LaMarche 1973). The extension of flood records  
191 based on tree rings was then used to improve flood frequency analysis (Harrison and Reid 1967). In  
192 the subsequent decades, several efforts have been done to understand the physiological responses  
193 of trees to flooding (Kozlowski, 1997; St. George et al., 2002; St. George and Nielsen, 2003) and the  
194 interactions between geomorphology and riparian trees (see review in Ballesteros-Canovas et al.,  
195 2015a). In northern North America, scarred trees have widely been used to study the effects of ice  
196 jamming on hydrology and hydraulics during early spring floods (Egginton and Day 1977, Tardif and  
197 Bergeron 1997). In the past decade, the use of trees and tree-ring records to provide surrogate flood  
198 information has been expanded geographically (e.g. Zielonka et al. 2008; Therrell and Bialecki, 2014,  
199 Ballesteros-Canovas et al., 2017; Zaginaev et al., 2016). A detailed review of palaeoflood studies  
200 based on tree rings can be found in Ballesteros-Canovas et al. (2015a).

201 Tree rings can provide information about the timing of past flood occurrence (usually with annual  
202 precision, but in some cases resolved to seasonal precision) as well as the flood magnitude. In  
203 temperate and boreal regions where trees form a distinct growth ring each year, it is possible to  
204 date floods through a combination of ring counting and pattern matching. Floods may be dated to a  
205 particular season if the growth anomalies caused by flooding can be resolved to a specific location  
206 within the annual ring: early-earlywood (event occurred during the prior dormant period);  
207 earlywood (event occurred during the earliest stage of growing season); early-latewood (first stage  
208 of the late growing season) and late-latewood (floods took place during the final part of the growing  
209 season; Stoffel and Corona, 2014). In addition to providing annual dates, tree rings have been also  
210 used to estimate flood magnitudes in combination with palaeohydraulic techniques (Gottesfeld,  
211 1996; McCord, 1996). In the recent decades, Ballesteros-Canovas et al. (2011a, 2011b) used two-  
212 dimensional hydraulic models and the height of dated scars on trees to understand the genesis of  
213 scars and its relation to flood peak discharge in contrasting fluvial environments. Ballesteros-  
214 Canovas et al. (2015a) provide information about the scars as a factor of the tree location within the  
215 reach river. Moreover, the degree of deformation of trees has been used as an explanatory variable  
216 to decipher the flood magnitude based on a mechanistic model in different rivers and tree species  
217 (Ballesteros-Canovas et al., 2014).

218 In part because of trees' affinity to riparian environments, tree rings are well suited to provide  
219 information about flood occurrence and magnitude during the past few centuries. The reliability of  
220 tree-based palaeoflood estimates have been tested against historical accounts and instrumental  
221 flood records. In general, the accuracy of this approach depends in part on tree age (Tichavský et al.,  
222 2017) and species (Ballesteros-Canovas et al., 2015b). Because riparian trees can be damaged by  
223 other causes (e.g. human activities), trees must be selected carefully to minimize the influence of  
224 non-flood signals. Moreover, because flood damage can vary between neighboring trees, samples  
225 must be taken from a minimum number of trees to replicate the flood signals and develop reliable  
226 estimates of past flood events (Ballesteros-Canovas et al., 2015a; Corona et al., 2012). Although  
227 sampling approach is the key factor to establish a reliable flood chronology, with regard to estimates  
228 of flood magnitude, the main source of uncertainty is the difference between high water stage of  
229 the flood and the maximum scar height. Further post-event assessments could contribute to range  
230 these uncertainties in different geomorphologic environments (Yanosky and Jarret, 2002) and  
231 improve the efficiency of the sampling procedures to reduce methodological uncertainty in the flow  
232 estimation using palaeostage indicators from trees (see Ballesteros-Canovas et al., 2015a).





233

234 **Figure 2.** Schematic illustration showing the most common ways that riparian trees are disturbed or  
 235 damaged by floods; (A) flood-rafted debris cause trees to form scars because of impact or abrasion,  
 236 (B) floodwaters undercut bankside trees and expose the roots, and (C) tree stems become distorted  
 237 or ‘tilted’ by hydrodynamic pressure from high flows.

238

239 **Speleothems**

240 Speleothems are cave mineral deposits such as stalagmites and flowstones, and are widely used as  
 241 palaeoclimate records (Wong and Breecker, 2015). They also hold potential to serve as precise  
 242 records of past flood events (Denniston and Luetscher, 2017) as they form continuous records over  
 243 centuries to millennia, resist being dissolved or recrystallized, and are well-suited for radiometric  
 244 dating by  $^{238}\text{U}$ - $^{234}\text{U}$ - $^{230}\text{Th}$  disequilibrium analysis (hereafter U-Th). When cave floodwaters submerge  
 245 speleothems, a coating of water-borne detritus may be deposited on growth surfaces (Atkinson,  
 246 1986). After water recedes and speleothem deposition is re-initiated, this detritus is trapped within  
 247 the speleothem along a single growth horizon, thereby preserving a record of the flood event. This  
 248 material can be identified by physical (Denniston et al., 2015) or chemical (Dasgupta et al., 2010)  
 249 contrasts with the speleothem matrix carbonate. However, care must be taken to differentiate  
 250 sediments deposited by flooding from other detrital particles including soot (Gradzinski et al., 2007),  
 251 guano (Martinez-Pillado et al., 2010), iron oxyhydroxide minerals crystallized on stalagmite growth  
 252 surfaces (Gázquez et al., 2014), fine-grained aeolian sediments (Railsback et al., 1999), and soil  
 253 particles transmitted into the cave along fractures that can easily be misinterpreted as flood events  
 254 (Belli et al., 2017).

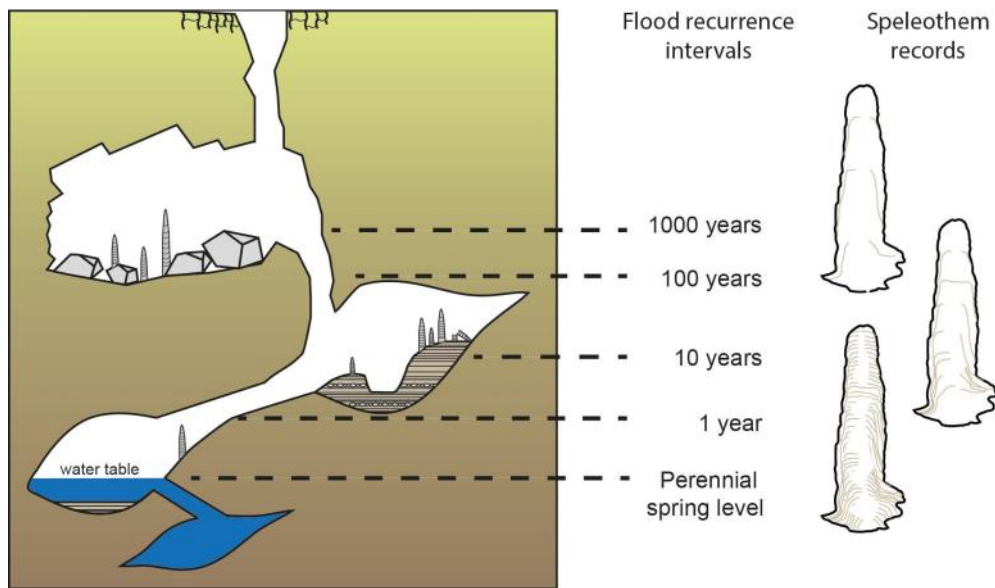
255 Detrital layers within speleothems have been linked to cave flooding events for several decades  
 256 (White, 1976; Atkinson, 1986), but detailed analysis of flood layers began more recently. For  
 257 example, Railsback et al. (1999) integrated a series of visual identification methods including optical  
 258 and scanning electron microscopy to distinguish between fluvial and air-borne grains. Geochemical  
 259 microanalysis has improved on this methodology (Dasgupta et al., 2010; Finné et al., 2015). Together

260 with examination of speleothems, environmental monitoring programs can be used to understand  
261 the rainfall thresholds required to trigger cave flooding (e.g. Maréchal et al., 2008) including  
262 monitoring of discharge at karst springs and water levels inside the associated cave system (Bättig  
263 and Wildberger, 2007).

264 The ages of flood layers are determined using growth models constructed from U-Th dating of the  
265 speleothem carbonate (see Dorale et al., 2004 for details). These dates can be remarkably precise,  
266 with two standard deviation errors less than 1% over the last several hundred thousand years (Wang  
267 et al., 2008). In many speleothems, the largest hindrance to achieving precise U-Th dates typically  
268 involves corrections for Th not produced within the stalagmite but instead incorporated into the  
269 stalagmite when it formed. This “inherited Th” is associated with detritus such as that introduced by  
270 flood-derived sediment. In order to develop a meaningful chronology for individual floods preserved  
271 within a speleothem, multiple precise dates must be obtained, and thus samples for dating must be  
272 milled from intervals with limited detrital components. A balance must struck, therefore, such that  
273 stalagmites record a sufficient number of flood events so as to offer a detailed history of cave  
274 flooding while also allowing extraction of “clean” carbonate for precise age determinations.

275 Information about both flood occurrence and magnitude can be extracted from speleothems. One  
276 attempt to constrain the magnitude of cave floods from the study of a single stalagmite involved two  
277 assumptions: first that the particle size of the sediments transported through the cave was  
278 proportional to the flood magnitude, and second that the larger floods would regress more slowly  
279 than smaller floods, thereby depositing thicker sedimentary packages on stalagmite growth surfaces  
280 (González-Lemos et al., 2015). Multiple flood time series reconstructed from stalagmites growing at  
281 different levels in the same cave would offer the most robust method for determining variations in  
282 flood magnitude (Fig. 3).

283 The ability of individual speleothems to record cave flood events accurately is limited by several  
284 factors including the position of the speleothem relative to flood stage, the hydraulics characterizing  
285 flood recession, the abundance and nature of cave sediment, the geometry of the speleothem  
286 growth surface, and the total energy delivered to the speleothem growth surface by dripwater  
287 following flooding (Denniston et al., 2015). Careful selection of speleothems is critical for identifying  
288 suitable samples for flood layer analysis. The appropriate elevation within the cave is selected  
289 relative to modern flood regimes – too low and too many flood layers may be preserved,  
290 complicating U-Th dating; too high and too few floods are recorded, limiting the utility of flood  
291 reconstruction analysis (Fig. 3). Sampling of stalagmites should always be performed in a manner  
292 designed to minimize damage to caves, and thus broken and down samples are preferred if the  
293 initial growth position is known. However, analysis of an actively growing speleothem may allow  
294 calibration using historical rainfall and/or documented cave flood events. The importance of  
295 replication among coeval speleothems is important due to differential preservation of flood  
296 sediment between samples (Denniston et al., 2015). Stalagmites appear to represent a more reliable  
297 proxy than flowstones given that the latter are typically characterized by complex growth dynamics  
298 and morphology (Boch and Spötl, 2011) and are more likely to incorporate colloidal fractions and  
299 detrital sediment transported by normal water flow (Meyer et al., 2012). Fast growing stalagmites  
300 (i.e.  $\geq 200 \mu\text{m}\cdot\text{yr}^{-1}$ ) exposed to flood recurrence intervals of  $\geq 10$  years therefore represent highly  
301 suitable samples for long-term reconstructions.



302

303 **Figure 3.** Illustration of the flood-recording mechanisms of speleothems in a cave system where  
 304 water table fluctuations in caves can reach several tens of meters, depending on the hydraulic head  
 305 loss in the karst system. Such flows deposit sediments on speleothems, which are preserved when  
 306 flood waters recede and speleothem growth resumes.

307

308 **Lake sediments**

309 Lake sediments are valuable archives of past floods as they constitute the natural sink for sediments  
 310 transported during floods. Flooding events erode the soil in the lake's watershed, mobilizing large  
 311 amounts of sediment that reach the lake basin via diffuse run-off and/or direct river streamflow. The  
 312 distribution and deposition of these sediments in the lake basin then forms discrete flood deposits.  
 313 As these deposits are preserved in the lake sedimentary sequences, they constitute continuous  
 314 archives of past floods (Gilli et al., 2013). Depending on the sediment-laden flow type after entering  
 315 the lake, different depositional mechanisms occur and result in different types of flood deposits  
 316 (Mulder and Chapron, 2011; Wilhelm et al., 2015). Their common feature is the enrichment in  
 317 detrital material from soil erosion. In case of organic-dominated matrix sediments, this usually  
 318 results in strong contrasts (e.g. the color) between the flood deposits and the background sediment  
 319 that make the flood deposit recognition easy under visual description and/or microscopic inspection  
 320 of sediment cores (Gilli et al., 2013, Støren et al., 2010). In case of clastic-minerogenic sediments, the  
 321 contrast is less pronounced and a combination of several textural and geochemical proxies (e.g.  
 322 grain size, elemental composition, density, organic content, carbon/nitrogen ratio, pollen, isotopic  
 323 analyses) is required to reveal flood deposits in the sediment record (Gilli et al., 2013; Schillereff et  
 324 al., 2014). Most flood deposits are also characterized by coarser grain sizes than the matrix (e.g.  
 325 Parris et al., 2010), providing a tool to reconstruct flood magnitudes as the grain size may represent  
 326 the river energy and the discharge (Campbell, 1998; Lapointe et al., 2012). In particular geological or  
 327 geomorphological contexts that induce a relatively homogeneous grain size precluding this approach  
 328 (e.g. Wilhelm et al., 2015), the flood magnitude can be reconstructed through the volume of flood  
 329 triggered sediments (Mulder and Chapron, 2011). If flood sediments are similarly distributed within  
 330 the lake basin between flood events, the thickness of flood deposits measured in a single core may  
 331 be used as a proxy of flood magnitude (Page et al., 1994; Schiefer et al., 2011; Corella et al., 2014;

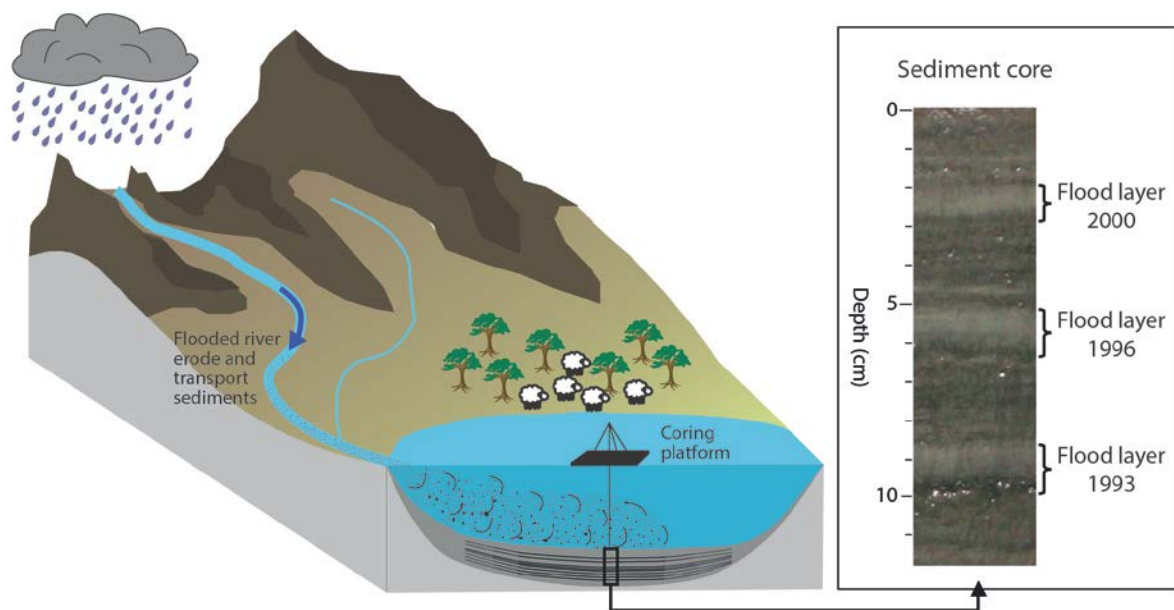
332 Wilhelm et al., 2015). In case of heterogeneous spatial distribution, an adequate spatial coverage  
333 with several cores is required for a reliable assessment of the flood-sediment volume (Jenny et al.,  
334 2014).

335 Lacustrine sediment processes during floods have been documented for the first time at the end of  
336 the nineteenth century by Forel (1885). He described the main sediment-laden flow type that takes  
337 place during floods in Lake Geneva and developed the concept of “plunging river”. This term  
338 corresponds to the plungement of the sediment-laden river waters when entering the lake because  
339 of its higher density than the lake waters. This concept was then further developed almost one  
340 century later by Sturm and Matter (1978) who provide insight of the different flow types and  
341 associated depositional mechanisms of sediments during floods. A few years later, Giovanoli (1990)  
342 introduced the first correlation between discharge and occurrence of sedimentary events in Lake  
343 Geneva and Rodbell et al. (1999) performed the first palaeoflood reconstruction in lake sediments  
344 aiming at documenting past climate variability. Following this approach, Noren et al. (2002) provided  
345 the first regional flood time series covering the entire Holocene from 14 lakes in the northeastern  
346 US. This was the first use of lakes as sources of palaeoflood information, and this approach has been  
347 subsequently applied by many follow-up studies (e.g. Wirth et al., 2013; Arnaud et al., 2016). From  
348 the beginning of the 21st century, methodological aspects have been further developed (Gilli et al.,  
349 2013; Schillereff et al., 2014). A particularly important milestone was the first identification of  
350 hydrological events in varved (i.e. seasonally laminated) lake sediments through the  
351 microstratigraphical position of a detrital layer within an annual couplet (Lamoureux, 1999). This  
352 allowed developing palaeoflood reconstructions at the seasonal scale (e.g. Czymzik et al., 2010;  
353 Swierzyński et al., 2013; Amann et al. 2015; Corella et al., 2016).

354 Lake sediments provide information about past flood occurrence and magnitude. Reconstructing  
355 flood occurrences and frequencies is rather straightforward and mainly based on the recognition of  
356 detrital, event layers and the precision of the chronology. The methods and proxies listed above  
357 allow the identification of event deposits at a millimeter scale. Careful attention is required to  
358 distinguish between event deposits triggered by floods compared to other triggers such as  
359 subaquatic landslides (e.g. Wilhelm et al., 2016a). The precision of the chronology depends on the  
360 dating methods applied (e.g. varve counting, short-lived radionuclides, radiocarbon ages, correlation  
361 with historical events or palaeomagnetic variations, Gilli et al., 2013). While seasonal precision can  
362 be achieved from varved records, most flood records are at decadal to centennial resolution. Flood  
363 magnitude reconstruction requires additional proxies, i.e. layer thickness and grain size, and a  
364 comprehensive understanding of the sedimentary processes of the lake system. Calibration with  
365 instrumental records allows quantitative reconstruction of flood occurrence and magnitude, i.e. to  
366 determine the threshold of precipitation or discharge for detrital layer deposition and the nature of  
367 the relationship between proxy and flood discharge (Jenny et al., 2014; Kämpf et al., 2015). Such  
368 flood records can extend to previous interglacial periods (e.g. Mangili et al., 2005; Brunck et al.,  
369 2016), but most cover the last millennia.

370 During the last two decades, numerous calibration studies and reproducibility tests have been  
371 performed and strongly support the reliability of palaeoflood reconstructions from lake sediments  
372 (e.g. Page et al., 1994; Czymzik et al., 2010; Schiefer et al., 2011; Lapointe et al., 2012; Wilhelm et al.,  
373 2012; Jenny et al., 2014; Corella et al., 2014; Kämpf et al., 2015; Wilhelm et al., 2015). These studies

374 demonstrated that a large variety of different factors influence the sedimentary processes of each  
 375 lake system (e.g. Mulder and Chapron, 2011) and that a comprehensive understanding of these  
 376 processes is crucial for reconstructing past floods. However, only a few of the ca. 80 existing flood  
 377 reconstructions could be calibrated to precipitation and discharge data, because of the scarcity of  
 378 such data and the overlap with the palaeoflood records are often limited by the short instrumental  
 379 period . An alternative option to validate flood records and define a relative flood magnitude is the  
 380 use of historical flood data that extends over longer periods (e.g. Wilhelm et al., 2012; 2016b).  
 381 Changes of the sedimentary processes in the watershed may bias the sedimentary flood evidence  
 382 record by modifying the deposition threshold or the relationship between discharge and sediment  
 383 supply through time. Such changes often depend on anthropogenic activities and associated land-  
 384 use changes (e.g. Giguet-Covex et al., 2014) or vegetation cover that control potential surface  
 385 erosion. Hence, information on anthropogenic activities is essential to reliably interpret flood time  
 386 series (for the methods see e.g. Etienne et al., 2013; Mills et al., 2016).



387  
 388 **Figure 4.** Schema of the flood-recording mechanisms of lake sediments (left) and photo of a  
 389 sediment core from Lago Maggiore (Southern Alps, Italy) showing typical flood layers (right).

390 **Fluvial sediments**

391 Alluvial deposits of rivers represent an unwritten flood record (Jones et al., 2010). Floods rise and fall  
 392 and leave behind a sediment signature. These deposits include sequences or couplets both of coarse  
 393 material from peak discharges and fine material from waning flows or inter-flood discharges. Unit  
 394 thickness may relate to flood duration and magnitude, but also to intra-flood sediment loadings.  
 395 Sediment spillage into low-energetic fluvial zones (channel margins and overbank zones) can result  
 396 in the formation and preservation of flood archives. Table 1 lists flood recording riverine  
 397 sedimentary environments that have been used to provide data for event-scale flood histories, in  
 398 some cases back to the early Holocene. They are variably available within river catchments, and  
 399 Figure 1 illustrates this in terms both of local depositional environment and catchment location.

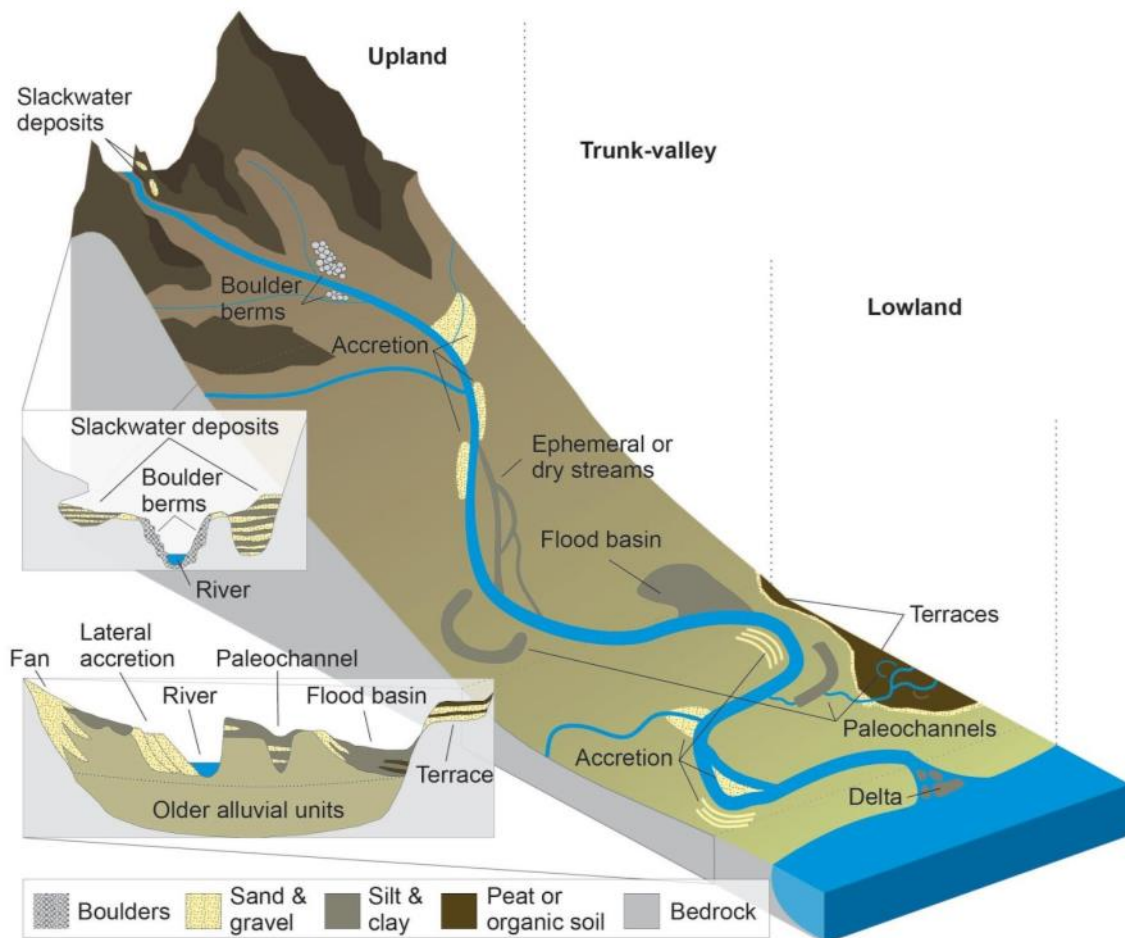
400 Beginning in the first half of the 20th century, fluvial deposits from pre-instrumental floods formed  
401 the basis for discharge estimates that were incorporated into flood-frequency analyses (e.g. Jahns,  
402 1947). The practice of estimating palaeoflood discharges from fluvial sediments and incorporating  
403 these into flood-frequency analyses improved over the late 20th and early 21st century with  
404 advances in hydraulic modelling and statistical techniques (Costa, 1978, Frances, 2004). The advent  
405 of advanced dating techniques greatly expanded the fluvial contexts from which information about  
406 past flood occurrence could be collected. In the early 21st century, databases containing hundreds  
407 of dated flood units were compiled to reconstruct spatiotemporal patterns of flood activity across  
408 catchments of different sizes and regions in relation to historical and Holocene climate variability  
409 and land-use changes (Macklin et al., 2006, 2015, Harden et al., 2010, Benito et al., 2015b).  
410 Improvements in the chronological precision of palaeoflood data derived from fluvial sediments over  
411 the last decade has significantly improved flood hazard assessment, including low-frequency high-  
412 magnitude events and their climatic forcing (section on 'Climate – flood relationships').

413 Ages can be assigned to flood units based on radiocarbon ( $^{14}\text{C}$ ) dating of organic material entrained  
414 in a fluvial deposit or optically-stimulated luminescence (OSL) dating of sandy grains incorporated in  
415 flood sediments. Flood units can also be bracketed by dates to infer ages of flood events (Kochel and  
416 Baker, 1982, Knox, 1993) using age modelling techniques (e.g. Jones et al., 2012, Munoz et al., 2015,  
417 Minderhoud et al., 2016). Other dating techniques that are commonly used to provide flood  
418 chronologies over the last 200-300 years are lichenometry (Macklin et al., 1992a) and radiogenic  
419 isotopes such  $^{210}\text{Pb}$ ,  $^{137}\text{Cs}$  and  $^7\text{Be}$  (Ely et al., 1992, Stokes and Walling, 2003).

420 Flood magnitude estimates can be determined from fluvial sediments in two ways. Firstly, for  
421 boulder berms, lateral and vertically accreted deposits, flood basins, and infilling river channel cut-  
422 offs, the texture (grain-size or geochemical proxy for this) of a flood unit can be related to peak flood  
423 discharge via statistical and/or hydraulic modelling (Macklin et al., 1992a, Knox, 1993, Foulds and  
424 Macklin, 2015, Toonen et al., 2015). Secondly, in gorges or canyons, slackwater deposit elevation  
425 serves as a high-water mark such that a minimum flood magnitude can be estimated using the slope-  
426 area method and/or hydraulic modelling (Kochel and Baker, 1988, Benito et al., 2004).

427 The use of fluvial sediments as palaeoflood archives is context dependent and requires an  
428 understanding of the processes that erode and deposit sediments in a reach or catchment (Toonen  
429 et al., 2017). Fluvial systems are dynamic and can be highly sensitive to climate and land-use change,  
430 which control water and sediment supply as well as channel and floodplain evolution (Knox, 2000;  
431 Benito et al., 2010). A site's suitability for providing information on the frequency and magnitude of  
432 past floods is contingent on establishing the vertical and lateral development of river channels and  
433 floodplains over the period of the flood record and is best evaluated by comparing multiple sites  
434 along a river reach or within a catchment. Riverine sedimentary environments provide an event-  
435 scale record of floods with a temporal precision on the order of years, decades and centuries. They  
436 favour the preservation of higher-magnitude events in the form of distinct depositional units in river  
437 channels, along channel margins, or on floodplains.

438



439

440 **Figure 5.** Illustration of the flood-recording riverine sedimentary environments where event-scale  
 441 palaeoflood records have been reconstructed.

442

Sedimentary environment	References
<b>Channel and channel margin</b>	
Vertical accretion units	Macklin et al., 1992b; Rumsby, 2000
Boulder berms and bars	Macklin et al., 1992a; Rumsby and Macklin, 1994; Maas and Macklin, 2002; Macklin and Rumsby, 2007; Foulds and Macklin, 2015
Lateral accretion units	Brown et al., 2001
<b>Overbank</b>	
Palaeochannel fills	Knox, 2000; Werritty et al., 2006; Jones et al., 2012; Macklin et al., 2015; Munoz et al., 2015; Toonen et al., 2015
Flood-basin incursions	Knox, 1993; Schulte et al., 2009, 2015; Jones et al. 2010; Macklin et al., 2015
Slack water deposits	Kochel and Baker, 1982; Benito et al., 2004; Baker, 2008; Harden et al., 2015

443

444 **Table 1.** Flood recording riverine sedimentary environments where event-scale palaeoflood records  
 445 have been reconstructed. Key publications are listed.

## 446 THE FLOOD-ARCHIVE DATA, THEIR CURRENT AND POTENTIAL USE

447 The study of different archives described previously provides a wealthy dataset of historical and  
448 palaeoflood series from all around the world. The following sections aim to provide an overview of  
449 this dataset, how it has been developed and could be used in the future to improve flood-hazard  
450 assessments.

### 451 **Overview of the available data**

452 A call-for-contribution in the framework of the PAGES Floods Working Group resulted in the  
453 identification of 381 published historical and paleoflood records covering at least the last 100 years.  
454 Most of these records are derived from historical documents (36%) and riverine sediments (33%),  
455 with the final third added from studies of lake sediments and tree rings (29%). A small number of  
456 studies (2%) are provided by relatively new approaches examining speleothems. A large number of  
457 historical documents and riverine sediment studies are not included at this stage, as they focus on  
458 single flood event at a given location. This study only considers flood series constructed from the  
459 various datasets rather than single events, for the purpose of dataset homogeneity allowing data  
460 comparison.

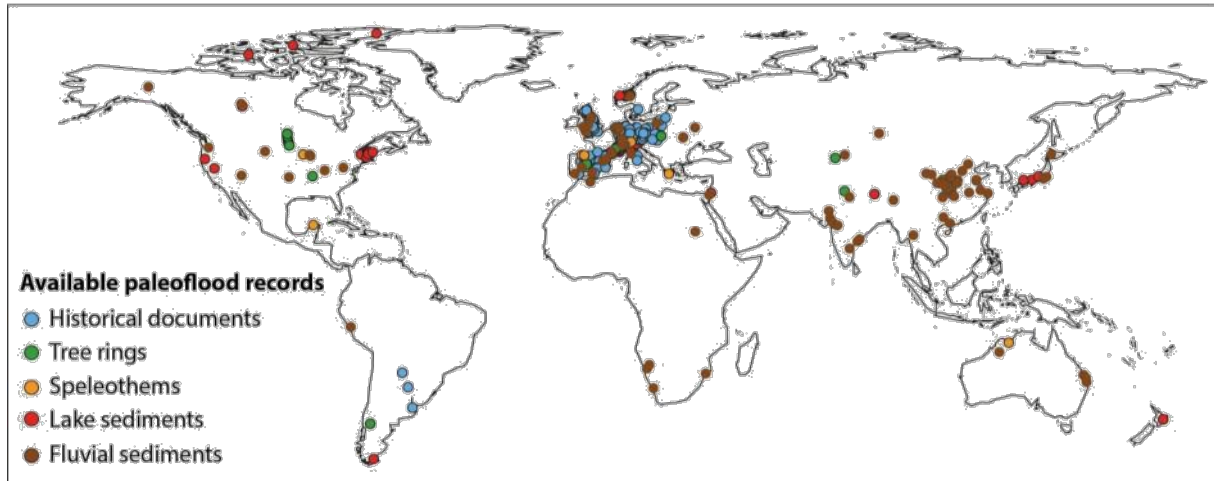
### 461 *Data distribution in space and time*

462 The distribution of the 381 flood records in the world is heterogeneous (Fig. 6). More than 60% of  
463 the records document past flood variability in Europe, while North America and Asia are respectively  
464 covered by 15-20% of the records, with a sparse coverage (6%) in the southern hemisphere  
465 (Oceania, South America and Africa). Recent large events, such as the August 2005 flood in Central  
466 and Western Europe have stimulated palaeoflood research in Europe, recognizing an opportunity to  
467 determine whether recent events are unique in magnitude and recurrence. Moreover, they permit  
468 an evaluation of the role of warmer periods in the occurrence of high-impact events (e.g. Wilhelm et  
469 al., 2012; Glur et al., 2013, Corella et al., 2016). However, improved knowledge of flood hazard is  
470 also required in less well documented regions, such as Asia and Africa; with approximately 13,000  
471 people killed by floods in India, Bangladesh, Pakistan and China between 2007 and 2013 (CRED,  
472 2015). Flood risk is exacerbated by dense populations living in flood-prone areas. However,  
473 adequate flood hazard assessments are limited by the absence of hydrological observations. Using  
474 natural flood archives offers a unique opportunity to provide such missing flood information, as  
475 performed for example in South Africa (Benito et al., 2011), Namibia (Grodek et al., 2013;  
476 Greenbaum et al., 2014), China (Liu et al., 2014) or Western Indian Himalayas (Ballesteros Canovas  
477 et al., 2017). The use of natural archives may be extended to any ungauged basins, thereby, helping  
478 to solve the problematic issue of establishing predictions (e.g. Silvapalan et al., 2003). Beside the  
479 spatial distribution of records, the length of records is critical, as longer records permit greater  
480 understanding of flood variability and recurrence rates related to rare extreme events. However,  
481 uncertainties may also be embedded in longer records as dating uncertainties often increase with  
482 time. Furthermore, changes in river morphology and catchment can change over time, influencing  
483 for instance fluvial dynamics, sediment load and river discharge. Among the 381 records, almost half  
484 (46%) covers the last hundred(s) of years, while 44% span the last millennia. Only a few records  
485 (10%) cover the entire Holocene (i.e. last 11,700 years) or more. The distribution by archive type is  
486 provided in Figure 7. Depending on available archival sources at the studied location, historical flood



487 records often cover the last couple of centuries and, in the best cases, the last millennia (e.g.  
488 Seidlmaier, 2001). Flood reconstructions based on tree rings are often limited to the last century  
489 because this approach requires living trees, whilst geological records (speleothem, lake and fluvial  
490 sediments) cover longer periods, in most cases the last millennia and in rare cases up to the hundred  
491 thousand years. The chronological length of documentary sources reflects preservation and the  
492 presence of recorders (of literate individuals), whilst geological flood records are mostly limited by  
493 technical sampling issues and dating methods.

494



496 **Figure 6.** Global distribution of historical, botanical and geological flood data. Details of this  
497 regularly-updated dataset and its interactive mapping can be found at:  
498 <http://pastglobalchanges.org/ini/wg/floods/data>

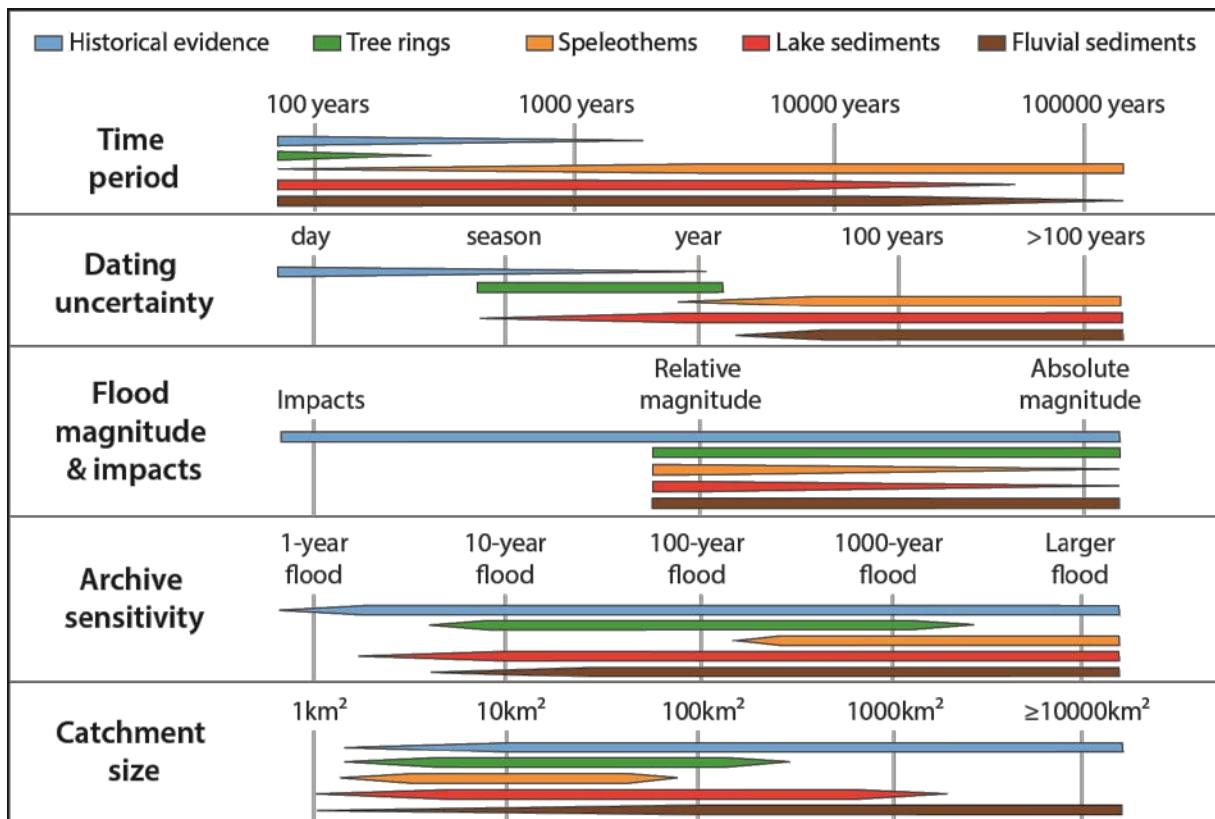
499

#### 500 *Further data characteristics*

501 The nature of flood information depends on archive type and applied methods. To further explore  
502 the available flood data, key characteristics such as dating uncertainties, potential to reconstruct  
503 flood magnitude, archive sensitivity and catchment scale are briefly detailed (Fig. 7).

504 Dating uncertainties in historical records are often minimal as many flood events are typically  
505 reported to a specific day, or at worst related to a month or a year. Tree rings permit past floods to  
506 be resolved to seasonal or annual scales. Among the geological records, lake sediments and  
507 speleothems are sometimes seasonally laminated and may then provide records at the same time  
508 scale. However, in most cases, dating uncertainties of geological records mostly depends on the  
509 dating methods applied and time period of the records. Generally, geological records covering  
510 recent centuries are affected by decadal-scale uncertainties, while records covering millennia are  
511 affected by decadal to century-scale uncertainties. A classical way to reduce these uncertainties is  
512 then to tie flood deposits to historical flood events that are perfectly dated (e.g. Medialdea et al.,  
513 2014; Wilhelm et al., 2017).

514 About half of the data series also contain information about flood magnitudes. Historical documents  
 515 often offer the richest information as they may fully document flood-related impacts on populations  
 516 and flood water levels, which can be used to calculate flood discharges through hydraulic  
 517 reconstructions. The elevation of riverine flood sediments or flood-impacted trees above the river  
 518 similarly permit an estimate of flood water level and thus, flood discharges. A comparable approach  
 519 may also be applied to speleothems (Fig. 3). Lake sediments do not document water level, instead  
 520 alternative approaches have been developed to reconstruct relative event magnitude and even in a  
 521 few cases absolute magnitude.



522  
 523 **Figure 7.** Conceptual diagram with the main characteristics of the different flood archives

524 The frequency and sensitivity at which floods are recorded varies according to archive type (Figure  
 525 7). Historical sources may be particularly rich, as flood events can be recorded at a high frequency  
 526 (sub-annual), with high levels of detail documented for the most severe and catastrophic events.  
 527 Trees growing directly next to rivers are more commonly struck by flood-rafted debris and may not  
 528 survive extreme floods, while those farther away from the main channel (but still located within the  
 529 flood zone) are more likely to survive and record high-magnitude events. Depending on their  
 530 locations, speleothems have the potential to record frequent floods, but their dating may be  
 531 complicated by the relative abundance of detrital material in the slow-growing matrix. Hence,  
 532 paleoflood records from speleothems classically focus on less frequent events (larger than 100-year  
 533 floods). In other geological records such as lake sediments, the frequency of recorded floods will be  
 534 site-specific, mostly depending on the sediment availability in the catchment area. For fluvial  
 535 sedimentary records the frequency of recording floods mainly depends on the chosen site for  
 536 investigation (e.g. its proximity and elevation above normal floods levels), as most regular (annual)

537 events can already produce sedimentary evidences at places near to the river, while the higher and  
538 distal parts of floodplains and valleys are inundated less frequently.

539 Historical documents often record the most severe and catastrophic floods that impacted  
540 communities adjacent to rivers. Whilst the longest series often reflect the greater presence of  
541 literate individuals in urban areas, occasionally smaller sites may also include accounts, as such  
542 accounts can be found across the full range of catchment sizes, but are most common in settlements  
543 adjacent to large rivers. Similarly, the study of fluvial sediments has often been undertaken to  
544 provide information about past events that could be catastrophic if they happen again. By contrast,  
545 records based on tree rings, speleothems or lake sediments mostly provide information about floods  
546 that occurred in relatively small catchment areas, in part reflecting the location of suitable sites (e.g.  
547 caves or lakes).

#### 548 **Towards a more accurate assessment of flood hazard and risk**

##### 549 *Risk related to extreme flooding*

550 Recent natural disasters exemplify what Nassim Taleb (2010) terms “Black Swans,” seemingly  
551 surprising, extreme-impact events that exceed expected possibilities. Taleb (2010) argues that  
552 extreme-event science should place major emphasis on extremes, instead of extrapolating from  
553 large populations of common phenomena, as it is conventionally undertaken in the current flood  
554 frequency paradigm. The latter, by concentrating on the ordinary and the “normal” often relegates  
555 extremes to “outlier” status, and instead focuses attention on statistical analyses of the large  
556 samples available for ordinary cases. Both documentary and natural archives provide a greater  
557 evidence base of extreme events for inclusion in frequency analysis, thereby reducing the reliance  
558 on relatively short instrumental series. Unfortunately, reliance upon conventional measurements  
559 (rarely more than several decades for flood events) means that the range of possible events is  
560 almost always poorly constrained. Even in those rare cases when an extreme appears in a flood  
561 record, its relegation to “outlier” status often leads to minimization of its importance. Conventional  
562 practice must therefore make assumptions about the population of observed and potential flood  
563 events, and consequently the probability for extreme events. Uncertainties often get expressed in  
564 an aleatory sense, relying on assumptions about randomness, informed only by the statistical record  
565 of the small common floods, and thereby ignoring the epistemic uncertainty associated with lack of  
566 knowledge concerning extremes. In considering the 2011 Japanese tsunami the immense economic  
567 loss from that event, arguably the greatest for any natural disaster in human history, was caused by  
568 the refusal/failure of responsible authorities to recognize that a geologically documented event of  
569 similar magnitude (Minoura et al., 2001) actually occurred about 1000 years earlier. This ignored the  
570 certainty that what has actually happened can indeed occur again, something that can only be  
571 realized through an approach that incorporates information on extreme flooding that extends over  
572 time scales of hundreds and thousands of years.

573

574 Natural, archival and instrumental datasets can be brought together for statistical analysis, providing  
575 a clearer perspective on extreme event frequency. Nevertheless, few countries legally require  
576 paleoflood and/or historical flood risk analyses to be undertaken prior to new developments (e.g.

577 building or infrastructure). The rare exceptions in Europe being Spain and the UK, where a review of  
578 natural and archival sources is legally required (Kjeldsen et al., 2014). Though temporally more  
579 limited than the millennial records of paleoflood data (Fig. 7), historical documentary archives  
580 provide detailed accounts of impacts (e.g. costs, damage, loss of life), as well as information on how  
581 communities responded to, and mitigated for, future events. These historical accounts inform the  
582 development and evolution of risk management (Brázdil et al., 2012), by observing how  
583 communities evolved in responding to extreme events. The irony is that the common-sense  
584 recognition that what has actually occurred in the past could happen again has much more potential  
585 to provoke engaged and wise public response than the abstract prognostications provided by  
586 conventional practice, thereby facilitating greater community engagement, improved public  
587 understanding of risk, and better decision making.

#### 588 *Flood-Frequency Analysis*

589 Flood frequency analysis (FFA) is a classical method in hydrology engineering, widely used for flood  
590 hazard mapping and hydraulic infrastructure design. FFA uses statistics to obtain the relationship  
591 between flood quantiles and their non-exceedance probability, i.e. to quantify the risk that a flood  
592 with a given discharge will be reached in a near future. Conventional FFA often uses annual  
593 maximum flood (AMF) records from gauge stations with 10 to 100 years of observations to estimate  
594 for example events exceeded with a chance of at least 1 in 100 for hazard mapping, 1 in 1000-5000  
595 for dam spillway design or even 1 in 10.000 for hazardous flooding in nuclear plants. Historical and  
596 paleoflood data can increase the information length and include the information of extreme events  
597 (Baker, 2008), often missed in gauge records. The combination of systematic (gauge) and non-  
598 systematic (historical and paleoflood) data from the statistical point of view results in a blend of  
599 categorical data with discrete variables measured continuously. The categorical data in extreme flow  
600 analysis are known as peak over a threshold (POT data), while annual series of maximum daily flows  
601 are known as AMF. The inclusion of non-systematic data in FFA consider historical and palaeoflood  
602 data as censored data, which means that for a given event to be registered, it must exceed a certain  
603 value or threshold (Leese, 1973). Thus, all floods that exceed a certain magnitude or threshold ( $X_t$ ) in  
604  $M$  years are known and, therefore, the remaining years in the series were below that discharge  
605 threshold (Francés, 2004; Stedinger and Cohn, 1986). Recent works have seen the development and  
606 inclusion of uncertainty bounds around return frequency estimation from historically augmented  
607 series (Macdonald et al., 2014; Prosdocimi et al., 2017).

608 Although paleoflood data provide a more rational assessment of extreme events, very low-  
609 probability floods could be still missed due to lack of conservation of the palaeoevidence. To address  
610 this point, several studies have been focused on indicators of non-flooded surfaces (elevation  
611 inferred not to have been inundated for a time period) to define non-exceedance discharge  
612 thresholds (Levish et al., 1996; England et al., 2006). Stable alluvial terraces have been also used as  
613 “paleohydrologic bound” or upper limits of flooding over a time interval established by  
614 geochronological means (England et al., 2010; Levish et al., 1996). Evidence for surface stability  
615 typically includes pedogenetic alterations, volcanic tephra, desert varnish disruption or other  
616 features readily affected by flooding. Such bounds can significantly constrain the tail of flood-  
617 frequency distributions and, in many cases, lead to more robust frequency and magnitude estimates  
618 of rare and large floods (e.g. O'Connell et al., 2002). However, a non-exceedance bound does not

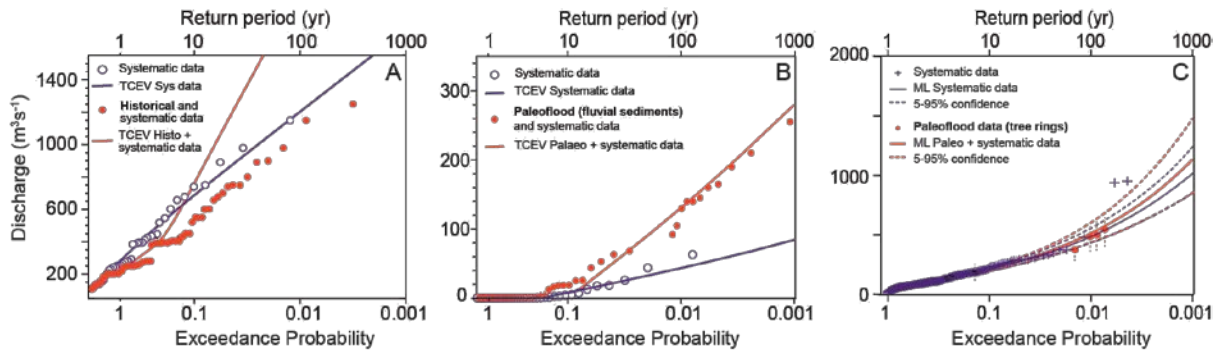
619 imply that the estimated peak discharge has ever occurred or that such a flood is even physically  
620 possible (Levish, 2002).

621 The main assumption of FFA is that the random variable must be independent and identically  
622 distributed (stationary, *iid*) through time. Natural systems oscillate within an unchanging envelope of  
623 variability, resulting in non-stationary hydrological responses (Milly et al., 2008). The temporal  
624 changes (non-stationarity) are often related to natural, low frequency variations of the climate  
625 system or to human impacts on the catchment hydrological parameters, such as land use (Benito et  
626 al., 2004; Francés, 2004; Redmond et al., 2002). Data used in conventional FFA should comply with  
627 the *iid* assumption, specifically related to stationarity. To this end, Lang et al. (1999) developed a  
628 stationarity test for censored series, which has been used on historical (Barriendos et al., 2003;  
629 Naulet et al., 2005; Fig. 8A), fluvial (Benito et al., 2011; Fig. 8B) and lake records (Corella et al., 2016).  
630 For statistical modelling, FFA uses a combination of a cumulative distribution function (e.g., Gumbel,  
631 LP3, GEV, etc.) and a parameter estimation method (Francés, 2004; Ouarda et al., 1998). The  
632 statistical methods used to include censored data in the continuous systematic records are  
633 maximum likelihood estimators (Leese, 1973; Stedinger and Cohn, 1986), the method of expected  
634 moments (Cohn and Stedinger, 1987; England et al., 2003) and Bayesian methods (Kuczera, 1999;  
635 O'Connell, 2005; O'Connell et al., 2002; Reis and Stedinger, 2005). Examples on the application of  
636 FFA using both gauged and paleoflood records can be found for instance in Denlinger et al. (2002),  
637 O'Connor et al. (1994) and Thorndycraft et al. (2005).

638 Regional flood frequency assessment (RFFA) has been also developed and applied to merge non-  
639 systematic and systematic records by flow-index regionalization. This approach is based on the  
640 distribution of flow discharge from different catchments of a homogenous region, which is often  
641 tested using the Hosking and Wallis (1987) algorithm. The RFFA has been used to merge systematic  
642 data and historical (Gaál et al., 2010; Gaume et al., 2010), fluvial (Lam et al., 2016) and tree-ring  
643 (Ballesteros-Canovas et al., 2017; Fig. 8C) data. RFFA enables more flexibility since it allows to  
644 include paleofloods computed far from the reach river where the gauge station is located, which  
645 may maximize the use of paleoflood data in a certain region.

646 The application of FFA and RFFA under non-stationary conditions has been recently developed. To  
647 this end, Generalized Additive Models for Location, Scale and Shape parameters (GAMLSS; Rigby and  
648 Stasinopoulos, 2005) have been used to describe the temporal variation of statistical parameters  
649 (mean, variance) in probability distribution functions (Gumbel, Lognormal, Weibull, Gamma). In non-  
650 stationary series statistical parameters may show changes that can be modelled (as a trend or  
651 smooth function) using time (Villarini et al., 2009) or related to a hydro-climatic index (e.g. Pacific  
652 Decadal Oscillation, North Atlantic Oscillation, Arctic Oscillation) as covariates (Lopez and Frances,  
653 2013). Non-stationary models may be implemented with categorical paleoflood data, once the  
654 driving covariate on parameter change is established (Machado et al., 2015). These changes on  
655 annual probability during past periods may be indicative for flood hazard change under the ongoing  
656 climate change.

657



658

659 **Figure 8.** Examples of Flood Frequency Analysis using systematic (gauge) data only and systematic  
660 data with historical (A, Machado et al. 2015), fluvial (B, Benito et al., 2011) or tree ring data (C,  
661 Ballesteros-Canovas et al., 2017). The distribution functions fitted to these flood datasets are Two  
662 Component Extreme Value (TCEV) and Maximum Likelihood (ML). The inclusion of historical and  
663 paleoflood data modifies the specific return periods and may reduce the uncertainty in discharge for  
664 events with large return periods.

665

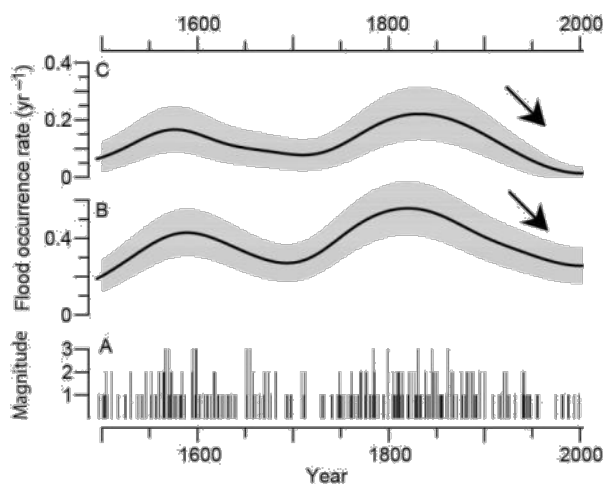
#### 666 *Climate – flood relationships*

667 A key feature of historical and palaeoflood records is the variability in flood recurrence at centennial-  
668 millennial timescales. However, such variations seem difficult to derive from gauge data as a result  
669 of their relative shortness in length. This high variability in flood recurrence was described in terms  
670 of “flood-rich” and “flood-poor” periods, which suggests a non-stationary model of flood occurrence  
671 (Mudelsee et al., 2003; Merz et al., 2014). This non-stationarity is often related to natural, low-  
672 frequency variations of the climate system and/or to human impacts on the catchment hydrological  
673 and erosion processes, such as land use (e.g. Benito et al., 2004; Arnaud et al., 2016). Disentangling  
674 these two factors and their possible interplays through time is a complex issue, requiring a number  
675 of different approaches (Mudelsee et al., 2004; Mills et al., 2016). However, once the role of these  
676 factors is well constrained and the entire chain of recording mechanisms is captured, then historical  
677 and palaeoflood data are highly valuable records to better understand the links between climate  
678 variability and flooding on centennial-millennial timescales. Owing to the shortness and inherent  
679 uncertainties in the records (measurement or reconstruction), it is mandatory to employ adequate  
680 statistical data analytical methods. These deliver accurate estimations of the non-stationary flood  
681 occurrence model and form the basis for making robust attributions about climate and human  
682 influences (Merz et al., 2012).

683 A parametric estimation model for Peak Over Threshold (POT) data is the Generalized Pareto  
684 distribution with time dependences in the three parameters, location, scale, and shape (Coles,  
685 2001). However, due to the increased numbers of parameters to be estimated to describe the non-  
686 stationarity, estimation may become a technical problem, especially if the shape parameter is  
687 allowed to be time-dependent (Mudelsee, 2014). A further deficit of this approach is that the  
688 functional form of the non-stationarities is parametrically prescribed, which may in practice restrict  
689 its usefulness, particularly for long series. The same deficit is shared by the GEV distribution with  
690 time-dependent parameters for block extremes (Coles, 2001). A more flexible, nonparametric

691 estimation model for extreme values is the Poisson point process, which has as estimation target the  
 692 time-dependent occurrence rate (number of events per time unit). The occurrence rate can be  
 693 estimated by means of a kernel technique, and a confidence band can be constructed by means of  
 694 bootstrap resampling (Cowling et al., 1996; Fig. 9). For mathematical details, such as boundary bias  
 695 correction or studentization, see Mudelsee (2014). Statistical tests of the null hypothesis “constant  
 696 occurrence rate” (i.e., stationarity) serve to assess the significance of the estimation result (i.e. the  
 697 trends in occurrence rate). A widely used test employs the logistic model (Frei and Schär, 2001) or an  
 698 even simpler model (Cox and Lewis, 1966). A method not recommended for detecting non-  
 699 stationarities in the extremal part is the trend test after Mann and Kendall, since this is a test for  
 700 changes in the mean, not the extremes. Mudelsee (2014) compared test performances using Monte  
 701 Carlo simulations.

702 Changes in flood frequency over multi-millennial scales have been tied for instance to climatic  
 703 regimes (glacial vs interglacial climates) (Spötl et al., 2011) while changes occurring over multi-  
 704 centennial scales have been linked to changes in atmospheric circulation modes such as the El Niño-  
 705 Southern Oscillation (Denniston et al., 2015; Munoz and Dee, 2017), the North Atlantic Oscillation  
 706 (Mudelsee et al., 2004; Foulds and Macklin, 2015; Schulte et al., 2015; Toonen et al., 2017; Wilhelm  
 707 et al., 2012; Wirth et al., 2013), or the Western Mediterranean Oscillation (Corella et al., 2016).  
 708 Identification of such connections provide a base for potential improvement of hydrological  
 709 projections, mainly if the forcing are predictable or slowly evolving (Merz et al., 2014 and references  
 710 therein). In between these timescales, the solar activity has also been proposed to explain changes  
 711 in flood frequency (Czymzik et al., 2010; Wilhelm et al., 2012; Corella et al., 2014; Benito et al.,  
 712 2015b; Sabatier et al., 2017; Macdonald and Sangster, 2017). Better understand these relationships  
 713 between climate and flooding is important in the context of the ongoing climate change, as the  
 714 warming is expected to impact magnitude, frequency and timing of river floods (Seneviratne et al.,  
 715 2012).



716  
 717 **Figure 9.** Historical winter floods of the Elbe river (A) and occurrence rates with 90% confidence  
 718 band for all floods (magnitude classes 1 to 3; B) and heavy floods only (magnitude classes 2 to 3; C).  
 719 Arrows highlight the downward trends obtained from the statistical test after Cox and Lewis  
 720 (significant at the one sided 90% level) for trend in the flood occurrence rate for the instrumental  
 721 period (1850 to 2002). Modified after Mudelsee et al. (2003).

722

## 723 **Conclusion**

724 Societies are currently under increasing threat from riverine floods, which are among the most  
725 destructive of natural hazards. Accurate flood hazard and risk assessment are therefore crucial for  
726 the sustainable development of societies worldwide. However, they are limited by the paucity of  
727 hydrological measurements. Historical and natural archives offer a valuable opportunity to extent  
728 current flood information in time and space and, moreover, offer the only insight into truly extreme  
729 events. Hence, historical and paleoflood data has considerable, but underutilized potential, to  
730 improve flood hazard assessments and, thereby, flood management and mitigation plans.

731 The development of this ‘field evidence’ approach to various archives makes its application possible  
732 in various settings and ungauged basins. This also results in a greater diversity of reconstructed flood  
733 information related to the specificity of each archive to record flood occurrence and magnitude.  
734 Moreover, the application of this approach by an increasing number of disciplines and/or  
735 communities provides an increasing dataset of global historical and paleoflood series. A challenge  
736 for the coming years is to gather, promote and share all these datasets to favour their use and  
737 integration in flood hazard assessments. For instance, increasingly combinations of historical and  
738 natural datasets can be brought together with instrumental data for statistical analysis, permitting  
739 analysis of non-continuous datasets to better understand extreme event frequency, in so doing  
740 greater confidence can be placed in past event magnitudes. In recognising other sources of  
741 information beyond conventional records, historical and paleoflood datasets often contain evidence  
742 of notable rare extremes, which do not justify the all-too-common assumption that information  
743 concerning extremes does not exist. Where such events exist within conventional datasets natural  
744 and archival sources can dispel claims of uniqueness, unparalleled magnitude or severity that are  
745 often associated with such extreme events. In recognising and engaging with natural and archival  
746 sources, greater understanding can be achieved, communities engaged, facilitating greater and  
747 improved public understanding of the risks presented as well as improved decision making.

748

## 749 **Acknowledgments**

750 This publication is a contribution to the Past Global Changes (PAGES) Floods Working Group. PAGES  
751 is supported by the US National Science Foundation and the Swiss Academy of Sciences. In addition,  
752 the publication has been inspired by the ‘Cross-community workshop on past flood variability’ of the  
753 PAGES Floods Working Group that held in Grenoble, France, June 27-30, 2016. The meeting has been  
754 generously supported by PAGES, Labex OSUG@2020 (Investissements d’avenir – ANR10 LABX56),  
755 European Geosciences Union, Grenoble-INP and Université Grenoble Alpes. The worldwide overview  
756 of historical and paleoflood records shown in Figure 6 was made possible thanks to many  
757 contributors that we warmly thanked. Further contributions are still warmly welcome as they will  
758 enable to update the interactive metadatabase  
759 (<http://pastglobalchanges.org/ini/wg/floods/wp1/data>).

760



761 **References**

- 762 Amann, B., Sönke, S., & Grosjean, M. (2015). A millennial-long record of warm season precipitation and flood frequency for  
 763 the Northwestern Alps inferred from varved lake sediments: implications for the future. *Quaternary Science*  
 764 *Reviews*, 115, 89–100, doi:10.1016/j.quascirev.2015.03.002
- 765 Aon Benfield (2016). 2016 Annual Global Climate and Catastrophe Report, 75p.  
 766 <http://thoughtleadership.aonbenfield.com/Documents/20170117-ab-if-annual-climate-catastrophe-report.pdf>
- 767 Arbellay, E., Fonti, P., & Stoffel, M. (2012). Duration and extension of anatomical changes in wood structure after cambial  
 768 injury. *Journal of Experimental Botany*, 63, 3271–3277, doi:10.1093/jxb/ers050
- 769 Arnaud, F., Poulenard, J., Giguët-Covex, C., Wilhelm, B., Révillon, S., Jenny, J.P., Revel, M., Enters, D., Bajard, M., Fouinat, L.,  
 770 Doyen, E., Simonneau, A., Pignol, C., Chapron, E., Vannière, B. & Sabatier, P. (2016). Erosion under climate and  
 771 human pressures: An alpine lake sediment perspective. *Quaternary Science Reviews*, 152, 1–18,  
 772 doi.org/10.1016/j.quascirev.2016.09.018
- 773 Arnold, K. (2001). Der wissenschaftliche Umgang mit Quellen. In Goertz, H.J. (Ed.), *Geschichte. Ein Grundkurs*, 2 (pp. 42–58).  
 774 Auflage, 2 Hamburg.
- 775 Atkinson, T.C., Lawson, T.J., Smart, P.L., Harmon, R.S., & Hess, J.W. (1986). New data on speleothem deposition and  
 776 palaeoclimate in Britain over the last forty thousand years. *Journal of Quaternary Science*, 1, 67–72,  
 777 10.1002/jqs.3390010108
- 778 Baker, V. R. (2008). Paleoflood hydrology: Origin, progress, prospects. *Geomorphology*, 101(1), 1–13,  
 779 doi:10.1016/j.geomorph.2008.05.016
- 780 Ballesteros-Cánovas, J.A., Stoffel, M., Bodoque, J.M., Bollschweiler, M., Hitz, O. & Díez-Herrero, A. (2010). Changes in wood  
 781 anatomy in tree rings of *Pinus pinaster* Ait. following wounding by flash floods. *Tree Ring Bulletin*, 66(2), 93–103,  
 782 doi.org/10.3959/2009-4.1
- 783 Ballesteros-Cánovas, J.A., Eguibar, M., Bodoque, J.M., Díez-Herrero, A., Stoffel, M., & Gutiérrez-Pérez, I. (2011a) Estimating  
 784 flash flood discharge in an ungauged mountain catchment with 2D hydraulic models and dendrogeomorphic  
 785 paleostage indicators. *Hydrological Processes* 25: 970–979, doi:10.1002/hyp.7888
- 786 Ballesteros-Cánovas, J.A., Bodoque, J.M., Díez-Herrero, A., Sanchez-Silva, M., & Stoffel, M. (2011b). Calibration of  
 787 floodplain roughness and estimation of palaeoflood discharge based on tree-ring evidence and hydraulic modelling.  
 788 *Journal of Hydrology*, 403, 103–115, doi: 10.1016/j.jhydrol.2011.03.045
- 789 Ballesteros-Cánovas, J.A., Márquez-Peñaranda, J.F., Sánchez-Silva, M., Díez-Herrero, A., Ruiz-Villanueva, V., Bodoque, J.M.,  
 790 & Stoffel, M. (2014). Can tilted trees be used for palaeoflood discharge estimation? *Journal of Hydrology*, 529(2),  
 791 480-489, <https://doi.org/10.1016/j.jhydrol.2014.10.026>
- 792 Ballesteros-Cánovas, J. A., Stoffel, M., St George, S., & Hirschboeck, K. (2015a). A review of flood records from tree rings.  
 793 *Progress in Physical Geography*, 39(6), 794–816, doi: 10.1177/0309133315608758
- 794 Ballesteros-Cánovas, J. A., Stoffel, M., & Guardiola-Albert, C. (2015b). XRCT images and variograms reveal 3D changes in  
 795 wood density of riparian trees affected by floods. *Trees*, 29(4), 1115–1126
- 796 Ballesteros-Cánovas, J. B., Trappmann, D., Shekhar, M., Bhattacharyya, A., & Stoffel, M. (2017). Regional flood-frequency  
 797 reconstruction for Kullu district, Western Indian Himalayas. *Journal of Hydrology*, 546, 140–149,  
 798 doi:10.1016/j.jhydro.2016.12.059
- 799 Barriandos, M., & Rodrigo, F.S. 2006. Study of historical flood events on Spanish rivers using documentary data.  
 800 *Hydrological Science Journal*, 51, 765–783, doi:10.1623/hysj.51.5.765
- 801 Barriandos, M., Cœur, D., Lang, M., Llasat, M. C., Naulet, R., Lemaitre, F., & Barrera, A. (2003). Stationarity analysis of  
 802 historical flood series in France and Spain (14th–20th centuries). *Natural Hazards and Earth System Sciences*, 3, 583–  
 803 592,
- 804 Bättig, G., & Wildberger, A. (2007). Comparison de la crue d’août 2005 dans le Hölloch avec les crues antérieures.  
 805 *Stalactite*, 57, 26–34.
- 806 Belli, R., Borsato, A., Frisia, S., Drysdale, R., Maas, R., & Greig, A. (2017). Investigating the hydrological significance of  
 807 stalagmite chemical (Mg, Sr) using Sr isotope and particulate element records across the Late Glacial-to-Holocene  
 808 transition. *Geochimica et Cosmochimica Acta*, 197, 247–263, doi:10.1016/j.gca.2016.10.024
- 809 Benito, G., Lang, M., Barriandos, M., Llasat, M. C., Francés, F., Ouarda, T., Thorndycraft, V.R., Enzel, Y., Bardossy, A., Coeur,  
 810 D. and Bobée, B. (2004). Use of systematic, palaeoflood and historical data for the improvement of flood risk  
 811 estimation. Review of scientific methods. *Natural Hazards*, 31(3), 623–643,

- 812 Benito, G., Ouarda, T.B.M.J. & Bárdossy, A. (2005). Applications of palaeoflood hydrology and historical data in flood risk  
813 analysis. *Journal of Hydrology*, 313, 1–2, doi:10.1016/j.jhydrol.2005.02.001
- 814 Benito, G., Rico, M., Sánchez-Moya, Y., Sopeña, A., Thorndycraft, V. R., & Barriendos, M. (2010). The impact of late  
815 Holocene climatic variability and land use change on the flood hydrology of the Guadalentín River, southeast  
816 Spain. *Global and Planetary Change*, 70(1), 53–63,
- 817 Benito, G., Botero, B.A., Thorndycraft, V.R, Rico, M.T, Sánchez-Moya, Y, Sopeña, A, Machado, M.J, & Dahan, O. (2011).  
818 Rainfall-runoff modelling and palaeoflood hydrology applied to reconstruct centennial scale records of flooding and  
819 aquifer recharge in ungauged ephemeral rivers. *Hydrology and Earth System Sciences*, 15, 1185–1196,
- 820 Benito, G., Brázdil, R., Herget, J., & Machado, M.J. (2015a). Quantitative historical hydrology in Europe. *Hydrology Earth  
821 System Sciences*, 19, 3517–3539, doi:10.5194/hess-19-3517–2015
- 822 Benito, G., Macklin, M.G., Panin, A., Rossato, S., Fontana, A., Jones, A.F., Machado, M.J., Matlakhova, E., Mozzi, P., &  
823 Zielhofer, C., (2015b). Recurring flood distribution patterns related to short-term Holocene climatic variability.  
824 *Scientific Reports*, 5, 16398, DOI: 10.1038/srep16398.
- 825 Blöschl, G., Nester, T., Komma, J., Parajka, J. & Perdigão, R.A.P. (2013). The June 2013 flood in the Upper Danube Basin, and  
826 comparisons with the 2002, 1954 and 1899 floods. *Hydrology and Earth System Sciences*, 17(12), 5197–5212,
- 827 Blöschl, G., Hall, J.L., Parajka, J., Perdigao, R.A.P., Merz, B., Arheimer, B., Aronica, G.T., Bilibashi, A., Bonacci, Q., Borga, M.,...  
828 & Živković N. (2017). Changing climate shifts timing of European floods. *Science* 2017, 357, 588–590, doi:  
829 10.1126/science.aan2506
- 830 Boch, R., & Spötl, C. (2011). Reconstructing palaeoprecipitation from an active cave flowstone. *Journal of Quaternary  
831 Science*, 26, 675–687,
- 832 Böhm, O., & Wetzel, K.-F. (2006). Flood history of the Danube tributaries Lech and Isar in the Alpine foreland of Germany.  
833 *Hydrological Science Journal*, 51, 784–798, doi:10.1623/hysj.51.5.784
- 834 Brázdil, R., Kundzewicz, Z.W., & Benito, G., (2006). Historical hydrology for studying flood risk in Europe. *Hydrological  
835 Science Journal*, 51, 739–764, doi:10.1623/hysj.51.5.739
- 836 Brázdil, R., Kundzewicz, Z.W., Benito, G., Demarée, G., Macdonald, N. & Roald, L.A. (2012). Historical floods in Europe in the  
837 past millennium. In *Changes in Flood Risk in Europe*. Wallingford (UK): Zbigniew W. Kundzewicz, 2012. s. 121–166,  
838 46 s. IAHS Special Publication 10. ISBN 978-1-907161-28-5
- 839 Brown, A.G., Cooper, L., Salisbury, C.R. & Smith, D.N. (2001). Late Holocene channel changes of the middle Trent: Channel  
840 response to a thousand year flood record. *Geomorphology*, 39, 69–82,
- 841 Brunck, H., Sirocko, F., Albert, J. (2016). The ELSA-Flood-Stack: A reconstruction from the laminated sediments of Eifel maar  
842 structures during the last 60000 years. *Global and Planetary Change*, 142, 136–146,
- 843 Campbell, C. (1998). Late Holocene lake sedimentology and climate change in southern Alberta, Canada. *Quaternary  
844 Research*, 49, 96–101,
- 845 Cohn, T.A., & Stedinger, J.R. (1987). Use of Historical Information in a Maximum Likelihood Framework. *Journal of  
846 Hydrology*, 96, 215–233,
- 847 Coles, S. (2001). *An Introduction to Statistical Modeling of Extreme Values*. Springer, London, 208 pp.
- 848 Corella, J.P., Benito, G., Rodríguez-Lloveras, X., Brauer, A., & Valero-Garcés, B.L. (2014). Annually-resolved lake record of  
849 extreme hydro-meteorological events since AD 1347 in NE Iberian Peninsula. *Quaternary Science Reviews*, 93, 77–  
850 90,
- 851 Corella, J., Valero-Garcés, B., Vicente-Serrano, S., Brauer, A., & Benito, G. (2016). Three millennia of heavy rainfalls in  
852 Western Mediterranean: frequency, seasonality and atmospheric drivers. *Scientific Reports* 6, 38206,
- 853 Corona, C., Lopez-Saez, J., Stoffel, M., Bonnefoy, M., Richard, D., Astrade, L., & Berger, F. (2012). How much of the real  
854 avalanche activity can be captured with tree rings? An evaluation of classic dendrogeomorphic approaches and  
855 comparison with historical archives. *Cold Regions Science and Technology*, 74, 31–42,
- 856 Costa, J. E. (1978). Holocene stratigraphy in flood frequency analysis. *Water Resources Research*, 14(4), 626–632,
- 857 Cox, D.R. & Lewis, P.A.W. (1966). *The Statistical Analysis of Series of Events*. Methuen, London, 285 pp.
- 858 CRED (UNISDR) (2015). The human cost of natural disasters: a global perspective. 58 p.,  
859 [http://cred.be/sites/default/files/The\\_Human\\_Cost\\_of\\_Natural\\_Disasters\\_CRED.pdf](http://cred.be/sites/default/files/The_Human_Cost_of_Natural_Disasters_CRED.pdf)
- 860 Czymzik, M., Dulski, P., Plessen, B., von Grafenstein, U., Naumann, R. & Brauer, A. (2010). A 450 year record of spring-  
861 summer flood layers in annually laminated sediments from Lake Ammersee (southern Germany). *Water Resources*

862 Research, 46, W11528,

863 Dasgupta, S., Saar, M.O., Edwards, R.L., Shen, C.-C., Cheng, H., & Alexander, E.C. (2010). Three thousand years of extreme  
864 rainfall events recorded in stalagmites from Spring Valley Caverns, Minnesota. *Earth and Planetary Science Letters*,  
865 300, 46–54,

866 Demarée, G.R. (2006). The catastrophic floods of February 1784 in and around Belgium—a Little Ice Age event of frost,  
867 snow, river ice and floods. *Hydrological Science Journal*, 51, 878–898, doi:10.1623/hysj.51.5.878

868 Denlinger, R.P., O'Connell, D.R.H., & House, P.K. (Eds.), 2002. Robust determination of stage and discharge: an example  
869 from an extreme flood on the Verde River, Arizona. *Ancient Floods, Modern Hazards: Principles and Applications of*  
870 *Paleoflood Hydrology*. Water Science and Application Series, Vol. 5. American Geophysical Union, Washington, DC,  
871 127–146 pp.

872 Denniston, R.F., Villarini, G., Gonzales, A.N., Wyrwoll, K.H., Polyak, V.J., Ummenhofer, C.C., Lachniet, M.S., Wanamaker Jr.,  
873 A.D., Humphreys, W.H., Woods, D., & Cugley, J. (2015). Extreme rainfall activity in the Australian tropics reflects  
874 changes in the El Niño/southern oscillation over the last two millennia. *Proceedings of the National Academy of*  
875 *Sciences*, 112, 4576–4581,

876 Denniston, R.F. & Luetscher, M. (2017). Speleothems as high-resolution paleoflood archives. *Quaternary Science Reviews*,  
877 170, 1–13,

878 Dorale, J.A., Edwards, R.L., Alexander, E.C., Shen, C.C., Richards, D.A., & Cheng, H. (2004). Uranium-Series Dating of  
879 Speleothems: Current Techniques, Limits, & Applications. In Sasowsky I.D., Mylroie J. (Eds) *Studies of Cave Sediments*  
880 (pp. 177–197). Springer, Boston, MA

881 Egginton, P.A., & Day, T.J. (1977). Dendrochronologic investigation of high water events along Hodgson Creek, District of  
882 Mackenzie. *Geological Survey of Canada*, 77(1A), 381–384,

883 Ely, L. L., Webb, R. H., & Enzel, Y. (1992). Accuracy of post-bomb 137Cs and 14C in dating fluvial deposits. *Quaternary*  
884 *Research*, 38(2), 196–204,

885 England, J.F.J., Salas, J.D., & Jarrett, R.D. (2003). Comparisons of two moments-based estimators that utilize historical and  
886 paleoflood data for the log-Pearson Type III distribution. *Water Resources Research*, 39(9), 5-1–5-16,

887 England, J.F., Jr., Klawon, J.E., Klinger, R.E., & Bauer, T.R. (2006). *Flood Hazard Study, Pueblo Dam, Colorado*, Bureau of  
888 Reclamation, Denver.

889 England, J., Godaire, J., Klinger, R., Bauer, T., & Julien, P. (2010). Paleohydrologic bounds and extreme flood frequency of  
890 the Upper Arkansas River, Colorado, USA. *Geomorphology*, 124(1), 1–16,

891 Etienne, D., Wilhelm, B., Sabatier, P., Reyss, J.L., & Arnaud, F. (2013). Influences of sampled environment and livestock  
892 number on *Sporormiella* abundances in modern lake sediments in French Alps. *Journal of Paleolimnology*, 49, 117–  
893 127,

894 Finne, M., Bar-Matthews, M., Holmgren, K., Sundqvist, H.S., Liakopoulos, I., & Zhang, Q. (2014). Speleothem evidence for  
895 late Holocene climate variability and floods in Southern Greece. *Quaternary Research*, 81, 213–227,

896 Forel, F.A. (1885). Les ravins sous-lacustres des fleuves glaciaires. *Comptes Rendus de l'Académie des Sciences de Paris*,  
897 101(16), 725–728.

898 Foulds, S.A., & Macklin, M.G. (2015). A hydrogeomorphic assessment of 21st Century floods in the UK. *Earth Surface*  
899 *Processes and Landforms*, 41(2), 256–270, doi: 10.1002/esp.3853

900 Frances, F. (2004). Flood frequency analysis using systematic and non-systematic information. In: Benito, G., &  
901 Thorndycraft, V.R. (Eds.), *Systematic, Paleoflood and Historical Data for the Improvement of Flood Risk Estimation:*  
902 *Methodological Guidelines* (pp. 55–70). Madrid, CSIC.

903 Frei, C., & Schär, C. (2001). Detection probability of trends in rare events: Theory and application to heavy precipitation in  
904 the Alpine region. *Journal of Climate*, 14, 1568–1584,

905 Friedman, J.M., Vincent, K.R., & Shafroth, P.B. (2005). Dating floodplain sediments using tree-ring response to burial. *Earth*  
906 *Surface Processes and Landforms*, 30(9), 1077–1091.

907 Gaál, L., Szolgay, J., Kohnová, S., Hlavčová, K., & Viglione, A. (2010). Inclusion of historical information in flood frequency  
908 analysis using a Bayesian MCMC technique: a case study for the power dam Orlik, Czech Republic. *Contributions to*  
909 *Geophysics and Geodesy*, 40 (2), 121–147.

910 Gaume, E., Gaál, L., Viglione, A., Szolgay, J., Kohnová, S., & Blöschl, G. (2010). Bayesian MCMC approach to regional flood  
911 frequency analyses involving extraordinary flood events at ungauged sites. *Journal of Hydrology*, 394 (1), 101–117,

- 912 Gázquez, F., Calaforra, J.M., Forti, P., Stoll, H., Ghaleb, B., & Delgado-Huertas, A. (2014). Paleoflood events recorded in  
913 speleothems in caves. *Earth Surface Processes and Landforms*, 39, 1345–1353,
- 914 Giguet-Covex, C., Pansu, J., Arnaud, F., Rey, P.J., Griggo, C., Gielly, L., Domaizon, I., Coissac, E., David, F., Choler, P.,  
915 Poulénard, J. & Taberlet, P. (2014). Long livestock farming history and human landscape shaping revealed by lake  
916 sediment DNA. *Nature communication*, 5, 3211, doi: 10.1038/ncomms4211
- 917 Gilli, A., Anselmetti, F.S., Glur, L. & Wirth, S.B. (2013). Lake sediments as archives of recurrence rates and intensities of past  
918 flood events. In: M. Schneuwly-Bollschweiler, M. Stoffel and F. Rudolf- Miklau (Eds.), *Dating Torrential Processes on*  
919 *Fans and Cones – Methods and Their Application for Hazard and Risk Assessment* (pp. 225–242). *Advances in Global*  
920 *Change Research*, 47.
- 921 Giovanoli, F. (1990). Horizontal transport and sedimentation by interflows and turbidity currents in Lake Geneva. In Tilzer,  
922 M.M., Serruya, C. (Eds.), *Large lakes: ecological structure and function* (pp. 175–195). Berlin, Springer.
- 923 Glaser, R., Riemann, D., Schönbein, J., Barriendos, M., Brázdil, R., Bertolin, C., Camuffo, D., Deutsch, M., Dobrovolný, P., van  
924 Engelen, A., Enzi, S., Halíčková, M., Koenig, S.J., Kotyza, O., Limanówka, D., Macková, J., Sghedoni, M., Martin, B., &  
925 Himmelsbach, I. (2010). The variability of European floods since AD 1500. *Climatic Change*, 101, 235–256,  
926 doi:10.1007/s10584-010-9816-7
- 927 Glur, L., Wirth, S. B., Buntgen, U., Gilli, A., Haug, G. H., Schär, C., Beer, J., & Anselmetti, F. S. (2013) Frequent floods in the  
928 European Alps coincide with cooler periods of the past 2500 years. *Science Report*, 3, 2770, doi:10.1038/srep02770
- 929 González-Lemos, S., Müller, W., Pisonero, J., Cheng, H., Edwards, R.L., & Stoll, H.M. (2015). Holocene flood frequency  
930 reconstruction from speleothems in northern Spain. *Quaternary Science Reviews*, 127, 129–140,
- 931 Gottesfeld, A.S. (1996). British Columbia flood scars: maximum flood-stage indicator. *Geomorphology*, 14, 319–325,
- 932 Gottesfeld, A.S., & Johnson Gottesfeld, L.M. (1990). Floodplain dynamics of a wandering river, dendrochronology of the  
933 Morice River, British Columbia, Canada. *Geomorphology*, 3, 159–179,
- 934 Gradzinski, M., Hercman, H., Nowak, M., & Bella, P. (2007). Age of black coloured laminae within speleothems from Domica  
935 cave and its significance for dating prehistoric human settlement. *Geochronometria*, 28, 39–45,
- 936 Greenbaum, N., Schwartz, U., Benito, G., Porat, N., Cloete, G.C., & Enzel, Y. (2014). Paleohydrology of extraordinary floods  
937 along the Swakop River, Namib Desert and paleoclimate implications. *Quaternary Science Reviews*, 103, 153–169,
- 938 Grodek, T., Benito G, Botero B.A, Jacoby Y, Porat N, Haviv I, Cloete, G., & Enzel, Y. (2013). The last millennium largest floods  
939 in the hyperarid Kuiseb River basin, Namib Desert. *Journal of Quaternary Science*, 28(3), 258–270,
- 940 Hall, J., Arheimer, B., Borga, M., Brázdil, R., Claps, P., Kiss, A., Kjeldsen, T. R., Kriauciunien, J., Kundzewicz, Z. W., Lang, M.,  
941 Llasat, M. C., Macdonald, N., McIntyre, N., Mediero, L., Merz, B., Merz, R., Molnar, P., Montanari, A., Neuhold, C.,  
942 Parajka, J., Perdigão, R. A. P., Plavcová, L., Rogger, M., Salinas, J. L., Sauquet, E., Schär, C., Szolgay, J., Viglione, A., &  
943 Blöschl, G. (2014) Understanding flood regime changes in Europe: a state-of-the-art assessment. *Hydrology Earth*  
944 *System Sciences*, 18, 2735–2772, doi:10.5194/hess-18-2735-2014
- 945 Harden, T.M., Macklin, M. G., & Baker, V. R. (2010). Holocene flood histories in south-western USA. *Earth Surface Processes*  
946 *and Landforms*, 35(6), 707–716,
- 947 Harden, T.M., O'Connor, J.E., & Driscoll, D.G. (2015). Late Holocene flood probabilities in the Black Hills, South Dakota with  
948 emphasis on the Medieval Climate Anomaly. *Catena*, 130, 62–68,
- 949 Harrison, S.S., & Reid, J.R. (1967). A flood-frequency graph based on tree-scar data. *Proceedings of the North Dakota*  
950 *Academy of Science*, 21, 23–33,
- 951 Helly, E.J., & LaMarche, V.C.Jr (1973). Historic flood information for northern California stream from geological and  
952 botanical evidence. *Geology Survey Professional Paper*, 485, 1–16,
- 953 Herget, J., & Meurs, H. (2010). Reconstructing peak discharges for historic flood levels in the city of Cologne, Germany.  
954 *Global Planetary Change*, 70, 108–116, doi:10.1016/j.gloplacha.2009.11.011
- 955 Himmelsbach, I., Glaser, R., Schoenbein, J., Riemann, D., & Martin, B. (2015). Reconstruction of flood events based on  
956 documentary data and transnational flood risk analysis of the Upper Rhine and its French and German tributaries  
957 since AD 1480. *Hydrology Earth System Sciences*, 19, 4149–4164, doi:10.5194/hess-19-4149-2015
- 958 Hosking, J.R.M., & Wallis, J.R. (1987). Parameter and Quantile Estimation for the Generalized Pareto Distribution.  
959 *Technometrics*, 29(3), 339-349
- 960 Jacobeit, J., Glaser, R., Luterbacher, J., & Wanner, H. (2003). Links between flood events in central Europe since AD 1500  
961 and large-scale atmospheric circulation modes. *Geophysical Research Letters*, 30, doi:10.1029/2002GL016433

- 962 Jahns, R.H. (1947). Geologic features of the Connecticut Valley, Massachusetts as related to recent floods. U.S. Geological  
963 Survey Water Supply Paper, vol. 996.
- 964 Jenny, J.P., Wilhelm, B., Arnaud, F., Sabatier, P., Giguët-Covex, C., Mélo, A., Fanget, B., Malet, E., Ployon, E., & Perga, M.E.  
965 (2014). A 4D sedimentological approach to reconstructing the flood frequency and intensity of the Rhône River (Lake  
966 Bourget, NW European Alps). *Journal of Paleolimnology*, 51(4), 469–483,
- 967 Jones, A.F., Macklin, M.G., & Lewin, J. (2010). Flood series data for the later Holocene: Available approaches, potential and  
968 limitations from UK alluvial sediments. *The Holocene*, 20(7), 1123–1135,
- 969 Jones, A. F., Macklin, M. G., & Brewer, P. A. (2012). A geochemical record of flooding on the upper River Severn, UK, during  
970 the last 3750 years. *Geomorphology*, 179, 89–105,
- 971 Kämpf, L., Mueller, P., Plessen, B., Naumann, R., Thoss, H., Güntner, A., Merz, B., & Brauer, A. (2015). Hydrological and  
972 sedimentological processes of flood layer formation in Lake Mondsee. *The Depositional Record*, doi: 10.1002/dep2.2
- 973 Kiss, A., & Laszlovszky, J. (2013). 14th-16th-Century Danube Floods and Long-Term Water-Level Changes in Archaeological  
974 and Sedimentary Evidence in The Western and Central Carpathian Basin: an Overview with Documentary  
975 Comparison. *Journal of Environmental Geography*, 6, 1–11, doi:10.2478/jengeo-2013-0001
- 976 Kjeldsen, T.R., Macdonald, N., Lang, M., Mediero, L., Albuquerque, T., Bogdanowicz, E., Brázdil, R., Castellarin, A., David, V.,  
977 Fleig, A., Gül, G.O., Kriaciuniene, J., Kohnová, S., Merz, B., Nicholson, O., Roald, L.A., Salinas, J.L., Sarauskienė, D.,  
978 Šraj, M., Strupczewski, W., Szolgay, J., Toumazis, A., Vanneville, W., Veijalainen, N., & Wilson, D. (2014).  
979 Documentary evidence of past floods in Europe and their utility in flood frequency estimation. *Journal of Hydrology*,  
980 517, 963–973, doi:10.1016/j.jhydrol.2014.06.038
- 981 Knox, J. C. (1993). Large increases in flood magnitude in response to modest changes in climate. *Nature*, 361(6411), 430–  
982 432.
- 983 Knox, J. C. (2000). Sensitivity of modern and Holocene floods to climate change. *Quaternary Science Reviews*, 19(1), 439–  
984 457,
- 985 Kochel, R.C., & Baker, V.C., (1982). Paleoflood hydrology. *Science*, 215, 353–361.
- 986 Kochel, R. C., & Baker, V. R. (1988). Paleoflood analysis using slackwater deposits. In Baker, V.R., Kochel, R.C., & Patton, P.C.  
987 (Eds.) *Flood Geomorphology* (pp. 169–187), New York, John Wiley & Sons.
- 988 Kogelnig, B., Stoffel, M., & Schneuwly-Bollschweiler, M. (2013). Four-dimensional growth response of mature *Larix decidua*  
989 to stem burial under natural conditions. *Trees – Structure and Function*, 27, 1217–1223,
- 990 Kozłowski, T.T. (1997). Responses of woody plants to flooding and salinity. *Tree Physiology – Monography*, 1, 1–29.
- 991 Kuczera, G. (1999). Comprehensive at-site flood frequency analysis using Monte Carlo Bayesian inference. *Water Resources*  
992 *Research*, 35, 1551–1557,
- 993 Kundzewicz, Z.W., Kanae, S., Seneviratne, S.I., Handmer, J., Nicholls, N., Peduzzi, P., Mechler, R., Bouwer, L.M., Arnell, N.,  
994 Mach, K., Muir-Wood, R., Brakenridge, G.R., Kron, W., Benito, G., Honda, Y., Takahashi, K., & Sherstyukov, B. (2014).  
995 Flood risk and climate change: global and regional perspectives. *Hydrological Sciences Journal*, 59(1), 1–28.
- 996 Kundzewicz, Z. W., Krysanova, V., Dankers, R., Hirabayashi, Y., Kanae, S., Hattermann, F.F., Huang, S., Milly, P. C. D., Stoffel,  
997 M., Driessen, P. P. J., Matczak, P., Quevauviller, P., & Schellnhuber, H.J. (2016). Differences in flood hazard  
998 projections in Europe - their causes and consequences for decision-making. *Hydrological Science Journal*, 1–  
999 14, doi.org/10.1080/02626667.2016.1241398
- 1000 Lam, D., Thompson, C., & Croke, J. (2016). Improving at-site flood frequency analysis with additional spatial information: a  
1001 probabilistic regional envelope curve approach. *Stochastic Environmental Research and Risk Assessment*, 1–21,  
1002 doi:10.1007/s00477-016-1303-x.
- 1003 Lamoureux, S.F. (1999). Spatial and interannual variations in sedimentation recorded in nonglacial varved sediments from  
1004 the Canadian High Arctic. *Journal of Paleolimnology*, 21, 73–84,
- 1005 Lang, M., Ouarda, T.B.M.J., & Bobée, B. (1999). Towards operational guidelines for over-threshold modeling. *Journal of*  
1006 *Hydrology*, 225, 103–117.
- 1007 Lapointe, F., Francus, P., Lamoureux, S.F., Said, M. & Cuvén, S. (2012). 1750 years of large rainfall events inferred from  
1008 particle size at East Lake, Cape Bounty, Melville Island, Canada. *Journal of Paleolimnology*, 48, 159–173,
- 1009 Leese, M.N. (1973). Use of censored data in the estimation of Gumbel distribution parameters for annual maximum flood  
1010 series. *Water Resources Research*, 9, 1534–1542, doi:10.1029/WR009i006p01534
- 1011 Levish, D., Ostenaar, D., & O’Connell, D. (1996). Paleohydrologic bounds and the frequency of extreme floods on the Santa

- 1012 Ynez River. California. California Weather Symposium A Prehistoric Look at California Rainfall and Floods, 19 pp.
- 1013 Levish, D.R. (2002). Paleohydrologic bounds-nonexceedance information for flood hazard assessment. In House, P.K.,  
1014 Webb, R.H., Baker, V.R. & Levish, D.R. (Eds.), *Ancient Floods, Modern Hazards: Principles and Applications of*  
1015 *Paleoflood Hydrology* (pp. 175–190). Water Science and Application, 5. American Geophysical Union, Washington,  
1016 D.C.
- 1017 Liu, T., Huang, C.C., Pang, J.L., Zhou, Y.L., Zhang, Y.Z., Ji, L., Shang, R.Q. (2014). Extraordinary hydro-climatic events during  
1018 1800–1600 yr BP in the Jin-Shaan Gorges along the middle Yellow River, China. *Palaeogeography, Palaeoclimatology,*  
1019 *Palaeoecology*, 410, 143–152.
- 1020 Lopez, J., & Frances, F. (2013). Non-stationary flood frequency analysis in continental Spanish rivers, using climate and  
1021 reservoir indices as external covariates. *Hydrology and Earth System Sciences*, 17(8), 3189–3203,
- 1022 Maas, G.S. & Macklin, M.G. (2002). The impact of recent climate change on flooding and sediment supply within a  
1023 Mediterranean mountain catchment, southwestern Crete, Greece. *Earth Surface Processes and Landforms*, 27,  
1024 1087–1105,
- 1025 Macdonald, N., Kjeldsen, T. R., Prosdocimi, I., & Sangster, H. (2014). Reassessing flood frequency for the Sussex Ouse,  
1026 Lewes: the inclusion of historical flood information since AD 1650, *Natural Hazards Earth System Sciences*, 14, 2817–  
1027 2828, doi:10.5194/nhess-14- 2817–2014
- 1028 Macdonald, N., & Sangster, H. (2017). High-magnitude flooding across Britain since AD 1750. *Hydrology Earth System*  
1029 *Sciences*, 21, 1631–1650, doi:10.5194/hess-21-1631-2017
- 1030 Machado, M.J. Botero, B. A., López, J., Francés, F., Díez-Herrero, A., & Benito, G. (2015). Flood frequency analysis of  
1031 historical flood data under stationary and non-stationary modelling. *Hydrology and Earth System Sciences*, 19, 2561–  
1032 2576,
- 1033 Macklin, M.G., Rumsby, B.T., & Heap, T. (1992a). Flood alluviation and entrenchment: Holocene valley floor development  
1034 and transformation in the British uplands. *Geological Society of America Bulletin*, 104, 631–643,
- 1035 Macklin, M.G., Rumsby, B.T. & Newson, M.D. (1992b). Historic overbank floods and vertical accretion of fine-grained  
1036 alluvium in the lower Tyne valley, north east England. In Billi P., Hey R., Tacconi P. and Thorne C. (Eds.), *Dynamics of*  
1037 *Gravel-bed Rivers* (pp. 564–580), Chichester, Wiley.
- 1038 Macklin, M.G., Benito, G., Gregory, K.J., Johnstone, E., Lewin, J., Michcynska, D.J., Soja, L., Starkel, L., & Thorndycraft, V.R.  
1039 (2006). Past hydrological events reflected in the Holocene fluvial record of Europe. *Catena*, 66, 145–154,
- 1040 Macklin, M.G., Toonen, W.H.J., Woodward, J.C., Williams, M.A.J., Flaux, C., Marriner, N., Nicoll, K., Verstraeten, G., Spencer,  
1041 N., & Welsby, D. (2015). A new model of river dynamics, hydroclimatic change and human settlement in the Nile  
1042 Valley derived from meta-analysis of the Holocene fluvial archive. *Quaternary Science Reviews*, 130, 109–123,  
1043 doi.org/10.1016/j.quascirev.2015.09.024.
- 1044 Macklin, M.G., & Rumsby, B.T. (2007). Changing climate and extreme floods in the British uplands. *Transactions of the*  
1045 *Institute of British Geographers*, 32(2), 168–186.
- 1046 Malik, I. (2006). Contribution to understanding the historical evolution of meandering rivers using dendrochronological  
1047 methods: example of the Mała Panew River in southern Poland. *Earth Surface Processes and Landform*, 31(10),  
1048 1227–1245,
- 1049 Mangili, C., Brauer, A., Moscariello, A., & Naumann, R. (2005). Microfacies of detrital event layers deposited in Quaternary  
1050 varved lake sediments of the Pianico-Sèllere Basin (northern Italy). *Sedimentology*, 52, 927–943,
- 1051 Maréchal, J.C., Ladouche, B., & Dörfliger, N. (2008). Karst flash flooding in a Mediterranean karst, the example of Fontaine  
1052 de Nîmes. *Engineering Geology*, 99, 138–146.
- 1053 Martinez-Pillado, V., Aranburu, A., Yusta, I., Stoll, H., & Arsuaga, J.L. (2010). Clima y ocupaciones en la Galería de Estatuas  
1054 (Atapuerca, Burgos) en los últimos 14000 años. *Relatos una estalagmita*. *Munibe*, 61, 89–102.
- 1055 McCord, V.A. (1996). Fluvial process dendrogeomorphology: reconstruction of flood events from the southwestern United  
1056 States using flood-scarred trees. In Dean, J.S., Meko, D.M., & Swetnam, T.W. (Eds.), *Tree-Ring, Environment and*  
1057 *Humanity* (pp 689–699). Radiocarbon Special Volume, Department of Geosciences, The University of Arizona Tucson.
- 1058 Medialdea, A., Thomsen, K.J, Murray, A.S, & Benito, G. (2014). Reliability of equivalent-dose determination and age-models  
1059 in the OSL dating of historical and modern palaeoflood sediments. *Quaternary Geochronology*, 22, 11–24,
- 1060 Merz, B., S. Vorogushyn, S., Uhlemann, J., Delgado, J. M. & Hundecha, Y. (2012). More efforts and scientific rigour are  
1061 needed to attribute trends in flood time series. *Hydrology Earth System Sciences*, 16, 1379–1387,
- 1062 Merz, B., Aerts, J., Arnbjerg-Nielsen, K., Baldi, M., Becker, A., Bichet, A., Blöschl, G., Bouwer, L. M., Brauer, A., Cioffi, F.,

- 1063 Delgado, J. M., Gocht, M., Guzzetti, F., Harrigan, S., Hirschboeck, K., Kilsby, C., Kron, W., Kwon, H.H., Lall, U., Merz, R.,  
 1064 Nissen, K., Salvatti, P., Swierczynski, T., Ulbrich, U., Viglione, A., Ward, P. J., Weiler, M., Wilhelm, B., & Nied, M.  
 1065 (2014). Floods and climate: emerging perspectives for flood risk assessment and management. *Natural Hazards and*  
 1066 *Earth System Sciences*, 14, 1921–1942,
- 1067 Meyer, M.C., Spötl, C., Mangini, A., & Tessadri, R. (2012). Speleothem deposition at the glaciation threshold and an attempt  
 1068 to constrain the age and paleoenvironmental significance of a detrital-rich flowstone sequence from Entrische Kirche  
 1069 Cave (Austria). *Paleogeography, Palaeoclimatology, Palaeoecology*, 319, 93–106,
- 1070 Mills, K., Schillereff, D., Saulnier-Talbot, E., Gell, P., Anderson, N.J., Arnaud, F., Dong, X., Jones, M., McGowan, S.,  
 1071 Massafiero, J., Moorhouse, H., Perez, L., & Ryves D.B. (2016). Deciphering long-term records of natural variability  
 1072 and human impact as recorded in lake sediments: a palaeolimnological puzzle. *Wiley Interdisciplinary Reviews:*  
 1073 *Water*, 4(2), doi: 10.1002/wat2.1195
- 1074 Milly, P.C.D., Betancourt, J., Falkenmark, M., Hirsch, R.M., Kundzewicz, Z.W., Lettenmaier, D.P., & Stouffer R.J. (2008).  
 1075 Climate change - Stationarity is dead: Whither water management? *Science*, 319(5863), 573–574,
- 1076 Minderhoud, P.S.J., Cohen, K.M., Toonen, W.H.J., Erkens, G., & Hoek, W.Z., (2016). Improving age-depth models of fluvio-  
 1077 lacustrine deposits using sedimentary proxies for accumulation rates. *Quaternary Geochronology*, 33, 35–45,
- 1078 Minouri, K., Imarura, F., Sugawara, D., Kono, Y., & Iwashita, T., & (2001). The 869 Jogan tsunami deposit and recurrence  
 1079 interval of large-scale tsunamis on the Pacific coast of northeast Japan. *Journal of Natural Disaster Science*, 23(2), 83–  
 1080 88,
- 1081 Mudelsee, M. (2014). *Climate Time Series Analysis: Classical Statistical and Bootstrap Methods*. Second edition. Springer,  
 1082 Cham, 454 pp.
- 1083 Mudelsee, M., Börngen, M., Tetzlaff, G., & Grünewald, U. (2003). No upward trends in the occurrence of extreme floods in  
 1084 central Europe. *Nature*, 425, 166–169,
- 1085 Mudelsee, M., Börngen, M., Tetzlaff, G., and Grünewald, U. (2004). Extreme floods in central Europe over the past 500  
 1086 years: Role of cyclone pathway “Zugstrasse Vb”. *Journal of Geophysical Research*, 109, D23101,  
 1087 doi:10.1029/2004JD005034
- 1088 Mulder, T., & Chapron, E. (2011). Flood deposits in continental and marine environments: character and significance. In  
 1089 R.M. Slatt and C. Zavalas (Eds.) *Sediment Transfer from Shelf to Deep Water—Revisiting the Delivery System*, AAPG  
 1090 Studies in Geology. 61, 1–30.
- 1091 Munoz, S.E., & Dee, S.G. (2017). El Niño increases the risk of lower Mississippi River flooding. *Scientific Reports*, 7, 1772,  
 1092 doi:10.1038/s41598-017-01919-6
- 1093 Munoz, S.E., Gruley, K.E., Massie, A., Fike, D.A., Schroeder, S., & Williams, J.W. (2015). Cahokia’s emergence and decline  
 1094 coincided with shifts of flood frequency on the Mississippi River. *Proceedings of the National Academy of*  
 1095 *Sciences*, 112(20), 6319–6324.
- 1096 Naulet, R. Lang, M., Ouarda, T.B.M.J., Coeur, D., Bobée, B., Recking, A., Moussay, D. (2005). Flood frequency analysis on the  
 1097 Ardeche river using French documentary sources from the last two centuries. *Journal of Hydrology*, 313(1-2), 58–78.
- 1098 Noren, A.J., Bierman, P.R., Steig, E.J., Lini, A. & Southon, J. (2002). Millennial-scale storminess variability in the northeastern  
 1099 United States during the Holocene epoch. *Nature* 419, 821–822,
- 1100 O’Connell, D.R.H. (2005). Nonparametric Bayesian flood frequency estimation. *Journal of Hydrology*, 313(1-2), 79–96,
- 1101 O’Connell, D.R.H., Ostenaar, D.A., Levish, D.R., & Klinger, R.E. (2002). Bayesian flood frequency analysis with paleohydrologic  
 1102 bound data. *Water Resources Research*, 38(5), 1–13, doi:10.1029/2000WR000028
- 1103 O’Connor, J.E. Ely, L.L., Wohl, E.E., Stevens, L.E., Melis, T.S., Kale, V.S., & Baker, V.R. (1994). A 4500-year record of large  
 1104 floods on the Colorado River in the Grand-Canyon, Arizona. *Journal of Geology*, 102(1), 1–9,
- 1105 Ouarda, T., Rasmussen, P., Bobée, B., & Bernier, J. (1998). Utilisation de l’information historique en analyse hydrologique  
 1106 fréquentielle. *Journal of Water Science*, 11, 41–49,
- 1107 Page, M.J., Trustrum, N.A., & DeRose, R.C. (1994). A high resolution record of storm-induced erosion from lake sediments,  
 1108 New Zealand. *Journal of Paleolimnology*, 11, 333–348,
- 1109 Parris, AS, Bierman, PR, Noren, AJ, Prins, M.A., & Lini, A. (2010). Holocene paleostorms identified by particle size signatures  
 1110 in lake sediments from the northeastern United States. *Journal of Paleolimnology*, 43, 29–49,
- 1111 Pfister, C., 2009. The “Disaster Gap” of the 20th Century and the Loss of Traditional Disaster Memory. *Gaia* 18, 239–246.
- 1112 Potter, H.R. (1964). Introduction to the history of the floods and droughts of the Trent basin (Unpublished manuscript).

- 1113 Loughborough.
- 1114 Pötzsch, C. G. (1784) *Chronologische Geschichte der grossen Wasserfluthen des Elbstroms seit tausend und mehr Jahren*  
1115 *[Nebst Nachtrag und Fortsetzung]*. In der Waltherischen Hofbuchhandlung, Dresden.
- 1116 Prosdoci, I., 2017. German tanks and historical records: the estimation of the time coverage of ungauged extreme  
1117 events. *Stochastic Environmental Research and Risk Assessment* 1–16. doi:10.1007/s00477-017-1418-8
- 1118 Railsback, B.L., Brook, G.A., & Webster, J.W. (1999). Petrology and paleoenvironmental significance of detrital sand and silt  
1119 in a stalagmite from Drotzky's cave, Botswana. *Physical Geography*, 20, 331–347,
- 1120 Redmond, K.T., Enzel, Y., House, P.K., & Biondi, F. (2002). Climate variability and flood frequency at decadal to millennial  
1121 time scales. In House, P.K., Webb, R.H., Baker, V.R., Levish, D.R. (Eds.), *Ancient Floods, Modern Hazards. Principles*  
1122 *and Applications of Paleoflood Hydrology* (pp. 21–45). American Geophysical Union, Washington, DC.
- 1123 Reis, D.S., & Stedinger, J.R. (2005). Bayesian MCMC flood frequency analysis with historical information. *Journal of*  
1124 *Hydrology*, 313(1-2), 97–116,
- 1125 Rigby, R.A., & Stasinopoulos, D.M. (2005). Generalized additive models for location, scale and shape. *Journal of the Royal*  
1126 *Statistical Society Series C-Applied Statistics*, 54, 507–544.
- 1127 Rodbell, D.T., Seltzer, G.O., Anderson, D.M., Abbott, M.B., Enfield, D.B., & Newman, J.H. (1999). An 15,000- year record of  
1128 El Nino-driven alluviation in southwestern Ecuador. *Science*, 283, 516–520.
- 1129 Rumsby, B. (2000). Vertical accretion rates in fluvial systems: a comparison of volumetric and depth-based estimates. *Earth*  
1130 *Surface Processes and Landforms*, 25, 617–631,
- 1131 Rumsby, B.T., & Macklin, M.G. (1994). Channel and floodplain response to recent abrupt climate change, The Tyne basin,  
1132 northern England. *Earth Surface Processes and Landforms* 19, 499–515,
- 1133 Sabatier, P., Wilhelm, B., Ficetola, G.F., Moiroux, F., Poulenard, J., Develle, A.L., Bichet, A., Chen, W., Pignol, C., Reyss, J.L.,  
1134 Gielly, L., Bajard, M., Perrette, Y., Malet, E., Taberlet, P., & Arnaud F. (2017). 6-kyr record of flood frequency and  
1135 intensity in the western Mediterranean Alps e Interplay of solar and temperature forcing. *Quaternary Science*  
1136 *Reviews*, 170, 121–135,
- 1137 Salinas, J.L., Kiss, A., Viglione, A., Viertl, R., & Blöschl, G. (2016). A fuzzy Bayesian approach to flood frequency estimation  
1138 with imprecise historical information. *Water Resources Research*, 52, 6730–6750, doi:10.1002/2016WR019177
- 1139 Sangster, H., Jones, C., & Macdonald N. (2018). The co-evolution of historical source materials in the geophysical,  
1140 hydrological and meteorological sciences: Learning from the past moving forward. *Progress in Physical Geography*,  
1141 42, 61-82
- 1142 Schiefer, E., Gilbert, R. & Hassan, M.A. (2011). A lake sediment-based proxy of floods in the Rocky Mountain Front Ranges,  
1143 Canada. *Journal of Paleolimnology*, 45, 137–149,
- 1144 Schillereff, D. N., Chiverrell, R. C., Macdonald, N., & Hooke, J. M. (2014). Flood stratigraphies in lake sediments: A review,  
1145 *Earth-Science Reviews*, 135, 17–37,
- 1146 Schulte, L., Veit, H., Burjachs, F., & Julià, R. (2009). Lütischine fan delta response to climate variability and land use in the  
1147 Bernese Alps during the last 2400 years. *Geomorphology*, 108, 107–121,
- 1148 Schulte, L., Peña, J.C., Carvalho, F., Schmidt, T., Julià, R., Llorca, J., & Veit, H. (2015). A 2600-year history of floods in the  
1149 Bernese Alps, Switzerland: frequencies, mechanisms and climate forcing. *Hydrology and Earth System Sciences*, 19,  
1150 3047–3072,
- 1151 Seidlmayer, S.J., (2001). *Historische und Moderne Nilstände: Untersuchungen zu den Pegelablesungen des Nils von der*  
1152 *Frühzeit bis in die Gegenwart*. Achet Verlag, Berlin.
- 1153 Seneviratne, S.I., Nicholls, D., Easterling, C.M. Goodess, S. Kanae, J. Kossin, Y. Luo, J. Marengo, K. McInnes, M. Rahimi, M.  
1154 Reichstein, A. Sorteberg, C. Vera, and X. Zhang, 2012: Changes in climate extremes and their impacts on the natural  
1155 physical environment. In: *Managing the Risks of Extreme Events and Disasters to Advance Climate Change*  
1156 *Adaptation*. In Field, C.B., Barros, V., Stocker, T.F., Qin, D., Dokken, D.J., Ebi, K.L., Mastrandrea, M.D., Mach, K.J.,  
1157 Plattner, G.-K., Allen, S.K., Tignor, M., & Midgley P.M. (Eds.). *A Special Report of Working Groups I and II of the*  
1158 *Intergovernmental Panel on Climate Change (IPCC)* (pp. 109–230). Cambridge University Press, Cambridge, UK, and  
1159 New York, NY, USA.
- 1160 Shroder, J.F. (1978). Dendrogeomorphological analysis of mass movement on Table Cliffs Plateau, Utah. *Quaternary*  
1161 *Research*, 9, 168–185,
- 1162 Sigafos, R.S. (1961). Vegetation in relation to flood frequency near Washington, D. C. U. S. Geological Survey Professional  
1163 Paper 424-C, 248–249.



- 1164 Sigafos, R.S. (1964). Botanical Evidence of Floods and Flood-Plain Deposition. Professional Paper, 485A. United States  
1165 Geological Survey. 35 pp
- 1166 Sivapalan, M., Takeuchi, K., Franks, S.W., Gupta, V.K., Karambiri, H., Lakshmi, V., Liang, X., McDonnell, J.J., Mendiondo,  
1167 E.M., O'Connell, P.E., Oki, T., Pomeroy, J.W., Schertzer, D., Uhlenbrook, S., & Zehe, E. (2003a). IAHS decade on  
1168 predictions in ungauged basins (PUB), 2003-2012: shaping an exciting future for the hydrological sciences.  
1169 Hydrological Sciences Journal 48(6): 857– 880
- 1170 Spötl, C., Boch, R., & Wolf, A. (2011). Eiszeitliche Klimadynamik im Spiegel eines Stalagmiten aus dem Hölloch  
1171 (Bayern/Vorarlberg). Die Höhle, 62, 1–4
- 1172 St. George, S., Nielsen, E., Conciatori, F?, & Tardif, J. (2002). Trends in Quercus macrocarpa vessel areas and their  
1173 implications for tree-ring paleoflood studies. Tree-Ring Bulletin, 58, 3–10,
- 1174 St. George, S., & Nielsen, E. (2003). Palaeoflood records for the Red River, Manitoba, Canada, derived from anatomical  
1175 tree-ring signatures. Holocene, 13(4), 547–555,
- 1176 Stedinger, J.R., & Cohn, T.A. (1986). Flood Frequency Analysis With Historical and Paleoflood Information. Water Resources  
1177 Research, 22, 785–793, doi:10.1029/WR022i005p00785
- 1178 Stoffel, M., & Corona, C., (2014). Dendroecological dating of geomorphic disturbance in trees. Tree-Ring Research, 70, 3–  
1179 20,
- 1180 Stokes, S., & Walling, D. (2003). Radiogenic and isotopic methods for the direct dating of fluvial sediments. Wiley, New  
1181 York, pp 231–267
- 1182 Støren, E. N., Olaf Dahl, S., Nesje, A., & Paasche Ø. (2010). Identifying the sedimentary imprint of high-frequency Holocene  
1183 river floods in lake sediments: development and application of a new method, Quaternary Sci. Rev., 29, 3021–3033,
- 1184 Sturm, M., & Matter, A. (1978). Turbidites and varves in Lake Brienz (Switzerland): deposition of clastic detritus by density  
1185 currents. Special Publications of International Association of Sedimentologists 2, 147–168.
- 1186 Swierczynski, T., Lauterbach, S., Dulski, P., Delgado, J., Merz, B. & Brauer, A. (2013). Mid- to late Holocene flood frequency  
1187 changes in the northeastern Alps as recorded in varved sediments of Lake Mondsee (Upper Austria). Quaternary  
1188 Science Reviews, 80, 78–90,
- 1189 Taleb, N. (2010). The black swan: The impact of the highly improbable. Random House, New York. 444 pp.
- 1190 Tardif, J., & Bergeron, Y. (1997). Ice-flood history reconstructed with tree rings from the southern boreal forest limit,  
1191 western Quebec. Holocene, 7(3), 291–300.
- 1192 Therrell, M. D., & Bialecki, M. B. (2015). A multi-century tree-ring record of spring flooding on the Mississippi River. Journal  
1193 of Hydrology, 529, 490–498.
- 1194 Thorndycraft, V.R., Benito, G., Rico, M., Sopeña, A., Sánchez-Moya, Y., & Casas, A. (2005). A long-term flood discharge  
1195 record derived from slackwater flood deposits of the Llobregat River, NE Spain. Journal of Hydrology, 313(1-2): 16–  
1196 31.
- 1197 Tichavský, R., Šilhán, K., & Stoffel, M. (2017). Age-dependent sensitivity of trees disturbed by debris flows—Implications for  
1198 dendrogeomorphic reconstructions. Quaternary Geochronology, 42, 63–75, doi.org/10.1016/j.quageo.2017.09.002
- 1199 Timell, T.E. (1986). Compression wood in gymnosperms. Spinger-Verlag, Berlin.
- 1200 Toonen, W.H.J., Winkels, T.G., Cohen, K.M., Prins, M.A., and Middelkoop, H. (2015). Lower Rhine historical flood  
1201 magnitudes of the last 450 years reproduced from grainsize measurements of flood deposits using End Member  
1202 Modelling. Catena 130, 69–81.
- 1203 Toonen, W.H.J., Foulds, S.A., Macklin, M.G., & Lewin, J. (2017). Events, episodes, and phases: Signal from noise in flood-  
1204 sediment archives. Geology, 45(4), 331-334.
- 1205 Villarini, G., Smith, J. A., Serinaldi, F., Bales, J., Bates, P. D., & Krajewski, W. F. (2009). Flood frequency analysis for  
1206 nonstationary annual peak records in an urban drainage basin. Advances in Water Resources, 32(8), 1255–1266
- 1207 Wang, Y., Cheng, H., Edwards, R.L., Kong, X., Shao, X., Chen, S., Wu, J., Jiang, X., Wang, X., & An, Z. (2008). Millennial- and  
1208 orbital-scale changes in the East Asian monsoon over the past 224,000 years. Nature, 451, 1090–1093.
- 1209 Werritty, A., Paine, J.L., Macdonald, N., Rowan, J.S., & McEwen, L.J. (2006). Use of multi-proxy flood records to improve  
1210 estimates of flood risk: Lower River Tay, Scotland. CATENA 66, 107–119. doi:10.1016/j.catena.2005.07.012
- 1211 Wertz, E., St. George, S., Zeleznik, J.D. (2013). Vessel anomalies in Quercus macrocarpa tree rings associated with recent  
1212 floods along the Red River of the North, United States. Water Resources Research, 49(1), 630–634.

- 1213 Wetter, O., Pfister, C., Weingartner, R., Luterbacher, J., Reist, T., & Trösch, J. (2011). The largest floods in the High Rhine  
1214 basin since 1268 assessed from documentary and instrumental evidence. *Hydrological sciences journal*, 56(5), 733–  
1215 758.
- 1216 Wetter, O. (2017). The potential of historical hydrology in Switzerland. *Hydrology and Earth System Sciences*, 21, 5781–  
1217 5803, doi:10.5194/hess-21-5781-2017
- 1218 White, W.B. (1976). Cave minerals and speleothems. In Ford, T.D., Cullingford, C.H.D. (Eds.), *The Science of Speleology* (pp.  
1219 267–328). Academic Press, London.
- 1220 Wilhelm, B., Arnaud, F., Sabatier, P., Crouzet, C., Brisset, E., Chaumillon, E., Disnar, J.R., Guiter, F., Malet, E., Reys, J.L.,  
1221 Tachikawa, K., Bard, E., & Delannoy, J.J. (2012a). 1400 years of extreme precipitation patterns over the  
1222 Mediterranean French Alps and possible forcing mechanisms. *Quaternary Research*, 78(1), 1–12
- 1223 Wilhelm, B., Sabatier, P., & Arnaud, F. (2015). Is a regional flood signal reproducible from lake  
1224 sediments? *Sedimentology*, 62(4), 1103–1117
- 1225 Wilhelm, B., Nomade, J., Crouzet, C., Litty, C., Sabatier, P., Belle, S., Rolland, Y., Revel, M., Courboulex, F., Arnaud, F., &  
1226 Anselmetti, F.S. (2016a). Quantified sensitivity of small lake sediments to record historic earthquakes: Implications  
1227 for paleoseismology. *Journal of Geophysical Research - Earth Surface*, 121, 2–16
- 1228 Wilhelm, B., Vogel, H., Crouzet, C., Etienne, D., & Anselmetti, F.S. (2016b). Frequency and intensity of palaeofloods at the  
1229 interface of Atlantic and Mediterranean climate domains. *Climate of the Past*, 12, 299–316
- 1230 Wilhelm, B., Vogel, H., & Anselmetti, F.S. (2017). A multi-centennial record of past floods and earthquakes in Valle d’Aosta,  
1231 Mediterranean Italian Alps. *Natural Hazards and Earth System Sciences*, 17, 613–625
- 1232 Wirth, S.B., Glur, L., Gilli, A. & Anselmetti, F.S. (2013). Holocene flood frequency across the Central Alps – solar forcing and  
1233 evidence for variations in North Atlantic atmospheric circulation. *Quaternary Science Reviews*, 80, 112–128
- 1234 Wong, C.I., & Brecker, D.O. (2015). Advancements in the use of speleothems as climate archives. *Quaternary Science  
1235 Reviews*, 127, 1–18
- 1236 Yanosky, T.M., & Jarrett, R.D. (2002). Dendrochronologic evidence for the frequency and magnitude of paleofloods. In  
1237 House, P.K., Webb, R.H., Baker, V.R., & Levish, D.R. (Eds). *Ancient Floods, Modern Hazards: Principles and  
1238 Applications of Paleoflood Hydrology* (pp. 77–89). Water Science and Application, vol. 5, American Geophysical  
1239 Union, Washington, DC.
- 1240 Zaginaev, V., Ballesteros-Cánovas, J. A., Erokhin, S., Matov, E., Petrakov, D., & Stoffel, M. (2016). Reconstruction of glacial  
1241 lake outburst floods in northern Tien Shan: Implications for hazard assessment. *Geomorphology*, 269, 75–84.
- 1242 Zielonka, T., Holeksa, J., & Ciapala, S. (2008). A reconstruction of flood events using scarred tree in the Tatra Mountains,  
1243 Poland. *Dendrochronologia*, 26, 173–183.

1244

## 1245 Further Reading

1246 For general information on the regional to global knowledge on flood evolution in the context of the  
1247 ongoing climate change, the reader is encouraged to have a look to the IPCC special report (2012) on  
1248 “Managing the Risks of Extreme Events and Disasters to Advance Climate Change Adaptation” freely  
1249 available here: [https://www.ipcc.ch/pdf/special-reports/srex/SREX\\_Full\\_Report.pdf](https://www.ipcc.ch/pdf/special-reports/srex/SREX_Full_Report.pdf)

1250 For more information related to the development and use of the paleoflood approaches in  
1251 mountainous areas, the reader is directed to the book ‘*Dating Torrential Processes on Fans and  
1252 Cones – Methods and Their Application for Hazard and Risk Assessment*’ published in a special issue  
1253 of *Advance in Global Change Research*. Please see:  
1254 <http://www.springer.com/us/book/9789400743359>

1255 To know more about the Paleoflood Hydrology historically based on fluvial sediments, the reader  
1256 can be interested by ‘House, P.K., Webb, R.H., Baker, V.R., Levish, D. (Eds.), 2002. *Ancient Floods*,

1257 Modern Hazards: Principles and Applications of Paleoflood Hydrology. Water Science and  
1258 Application, vol. 5. American Geophysical Union. 385 pp.’  
1259