

A Model for Human Islet Transplantation to Immunodeficient Streptozotocin-Induced Diabetic Mice

Cell Transplantation
2018, Vol. 27(11) 1684–1691
© The Author(s) 2018
Article reuse guidelines:
sagepub.com/journals-permissions
DOI: 10.1177/0963689718801006
journals.sagepub.com/home/cil


Elisabet Estil-les^{1,2} , Noèlia Téllez^{1,2,3},
Montserrat Nacher^{1,2,4}, and Eduard Montanya^{1,2,3,4}

Abstract

Streptozotocin (STZ) is a cytotoxic glucose analogue that causes beta cell death and is widely used to induce experimental diabetes in rodents. The sensitivity of beta cells to STZ is species-specific and human beta cells are resistant to STZ. In experimental islet transplantation to rodents, STZ-diabetes must be induced before transplantation to avoid destruction of grafted islets by STZ. In human islet transplantation, injection of STZ before transplantation is inconvenient and costly, since human islet availability depends on organ donation and frail STZ-diabetic mice must be kept for unpredictable lapses of time until a human islet preparation is available. Based on the high resistance of human beta cells to STZ, we have tested a new model for STZ-diabetes induction in which STZ is injected after human islet transplantation. Human and mouse islets were transplanted under the kidney capsule of athymic nude mice, and 10–14 days after transplantation mice were intraperitoneally injected with five consecutive daily doses of STZ or vehicle. Beta-cell death increased and beta-cell mass was reduced in mouse islet grafts after STZ injection. In contrast, in human islet grafts beta cell death and mass did not change after STZ injection. Mice transplanted with rodent islets developed hyperglycemia after STZ-injection. Mice transplanted with human islets remained normoglycemic and developed hyperglycemia when the graft was harvested. STZ had no detectable toxic effects on beta cell death, mass and function of human transplanted islets. We provide a new, more convenient and cost-saving model for human islet transplantation to STZ-diabetic recipients in which STZ is injected after islet transplantation.

Keywords

Streptozotocin, human islet transplantation, pancreatic beta cell, beta cell mass, beta cell death

Introduction

Streptozotocin (STZ, 2-deoxy-2-(3-(methyl-3-nitrosoureido)-D-glucopyranose) is a glucosamine-nitrosourea compound that selectively destroys pancreatic beta cells. The beta cell selectivity is conferred by the glucose moiety that allows the intracellular uptake in cells expressing the glucose transporter GLUT-2^{1–5}, and the toxicity is dependent upon the DNA-alkylating activity of its methylnitrosourea moiety^{6–8}. Thus, cells that do not express GLUT-2 are resistant to STZ^{5,9}. Rodent pancreatic beta cells have GLUT-2 as the main glucose transporter and are highly sensitive to STZ damage. However, GLUT-2 expression is very low in human beta cells, and GLUT-1, that has very low or no affinity for STZ, is the predominant glucose transporter^{5,10,11}. Thus, human beta cells are highly resistant to the toxic effects of STZ^{12–14}. The resistance, however, is not complete and STZ is used in oncology as a chemotherapeutic agent to treat metastatic insulinomas^{15–18}.

Reversal of diabetes after human islet transplantation to STZ-diabetic mice is considered the gold-standard method to assess the quality of human islet preparations, as it has shown the best correlation with graft function after islet transplantation to diabetic patients^{19,20}. The model has been also used to evaluate the degree of maturation and function

¹ Centro de Investigación Biomédica en Red de Diabetes y Enfermedades Metabólicas Asociadas (CIBERDEM), Barcelona, Spain

² Bellvitge Biomedical Research Institute (IDIBELL), Barcelona, Spain

³ University of Barcelona, Spain

⁴ Hospital Universitari de Bellvitge, Barcelona, Spain

Submitted: May 23, 2018. Revised: August 9, 2018. Accepted: August 23, 2018.

Corresponding Author:

Eduard Montanya, Endocrinology Department, Hospital Universitari Bellvitge, Feixa Llarga s/n, Hospitalet de Llobregat, 08907, Barcelona, Spain. Email: montanya@ub.edu



of insulin-producing cells differentiated from human stem cells^{21–23}. In experimental islet transplantation to rodents, STZ-diabetes must be induced before islet transplantation to avoid the concomitant destruction of grafted islets. Thus, STZ is first injected and once diabetes is confirmed several days later, islet transplantation is performed^{24–26}. The availability of rodent islet donors is at the discretion of the investigator, and islet isolation and transplantation can be planned well in advance and conveniently performed once diabetes has been confirmed in the recipient. In contrast, human islet isolation and transplantation can't be planned ahead of time since pancreas availability depends on organ donation. Thus, prospective STZ-diabetic recipients of human islet transplantation, usually frail immunodeficient mice requiring more intensive care, including daily treatment with insulin, must be kept in the animal facility for unpredictable lapses of time, until a human islet preparation is available. Based on the well-known resistance of human beta cells to STZ toxicity, we have investigated a new model for experimental human islet transplantation in which islets are transplanted to healthy recipients, and STZ is injected several days later, after the islets' engraftment. The model reduces the burden and cost of the procedure and increases the animal welfare.

Materials and Methods

Animals

Male athymic Nude-Foxn1^{nu} mice (Harlan Laboratories, Horst, The Netherlands) housed under specific pathogen-free conditions were used as recipients of human and mouse islet transplantation. Male inbred C57Bl/6 mice (Harlan France SARL, Gannat, France) were used as donors of mouse islets for transplantation. Mice were maintained in the animal facility of Institut d'Investigació Biomèdica de Bellvitge (IDIBELL) (Association for Assessment and Accreditation of Laboratory Animal Care International accreditation number 1155). Experimental procedures were approved by the Ethical Committee for Animal Experimentation of IDIBELL.

Experimental Design

Athymic Nude-Foxn1^{nu} mice were transplanted with 2000 ($n = 14$) or 800 ($n = 9$) human islets, or with 100–200 C57Bl/6 mouse islets ($n = 15$) and treated with STZ or vehicle 10–14 days later (Figure 1). Two thousand human islets are required to restore normoglycemia when transplanted to already diabetic, STZ-injected, mice²⁷, and 800 islets are a clearly insufficient beta cell mass in this model^{28,29}. The 2000 human islet and the mouse islet grafts were harvested 6 h after the last injection of STZ or vehicle. The 800 human islet grafts were not harvested after STZ injection, and blood glucose was monitored for an additional week to determine whether they could maintain normoglycemia. A group of non-transplanted mice treated with STZ ($n = 9$) was included in the study as controls for blood glucose.

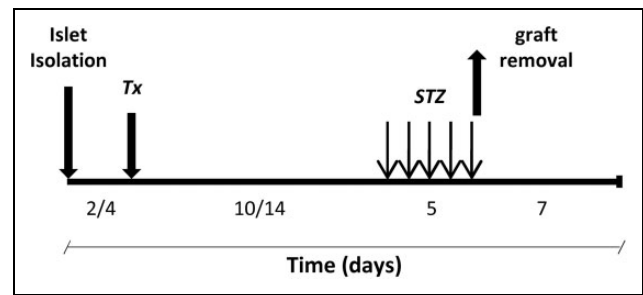


Figure 1. Experimental design. Human and mouse islets were transplanted under the kidney capsule of athymic nude mice (Tx). Ten to 14 days after transplantation, mice were intraperitoneally injected with five consecutive daily doses of either STZ (70 mg/kg body weight) or vehicle (citrate). Grafts were harvested on the last day of STZ injection to determine beta cell death, mass and vascular density or followed for seven additional days to assess the metabolic evolution.

Streptozotocin (Sigma Immunochemicals, St Louis, MO, USA), freshly dissolved in citrate buffer (pH = 4.5), was injected intraperitoneally in five consecutive daily doses (70 mg/kg body weight, total dose 350 mg/kg). Blood was obtained between 9:00 and 11:00 a.m., in non-fasting conditions from the snipped tail and glucose was measured with a portable meter (Glucocard Memory, A. Menarini Diagnostics, Barcelona, Spain). Body weight was simultaneously determined. Animals were considered hyperglycemic when blood glucose values were >11.1 mmol/l on two consecutive measurements.

Human and Mouse Islet Isolation and Transplantation

Human pancreatic islets were isolated from six adult cadaveric organ donors, age 58 ± 6.6 years, by collagenase digestion (Collagenase NB1 Premium Grade with Neutral Protease NB, Serva Electrophoresis GmbH, Heidelberg, Germany) using the Ricordi method, purified on a refrigerated COBE 2991 cell processor (COBE BCT, Laekwood, Colorado, USA), and transplanted, as previously described³⁰. Use of human islets was approved by the Ethics Committee of Hospital of Bellvitge, and written, signed consent was obtained from donor relatives. Mouse islets were isolated by collagenase (Collagenase P; Roche diagnostics, Mannheim, Germany) digestion of the pancreas²⁶.

Islets were transplanted under the kidney capsule. To harvest the graft, the kidney capsule surrounding the graft was incised and removed with the graft. Grafts were immediately immersed in 4% paraformaldehyde-PBS, and after the removal of any excess paraformaldehyde by capillary action, weighed and processed for paraffin embedding²⁶.

Immunohistochemical Studies

Beta cell death. Graft sections were double-stained for apoptotic nuclei using the TUNEL technique (In Situ Cell Death Detection Kit, ApopTag; Millipore, Temecula, CA, USA),

and for insulin with a rabbit polyclonal anti-insulin antibody (Santa Cruz Biotechnology Inc., Dallas, TX, USA) (final dilution 1:100). For insulin labeling, the secondary antibody was a donkey anti-rabbit IgG conjugated with Alexa Fluor 555 (Life Technologies, Eugene, OR, USA; final dilution 1:400). Nuclei were stained with 300 nM DAPI (Life Technologies). TUNEL-positive beta cells were assessed using a Leica DM4000B microscope connected to a digital camera (Leica DFC310 FX) (Wetzlar, Germany) with a color monitor. Necrotic areas were excluded. Beta cell death was expressed as percentage of TUNEL-positive beta cells. A minimum of 1200 cells per sample were counted.

Beta cell mass and endocrine non-beta cell mass. Beta cell and endocrine non-beta cell mass was measured by point-counting morphometry on sections double-stained for insulin with a chicken anti-human antibody (Abcam, Cambridge, UK) (final dilution 1:1000) and for the endocrine non-beta cell mass with a cocktail of antibodies including rabbit anti-human glucagon (Cell Signaling Technology, Inc, Beverly, MA, USA) (final dilution 1:100), rabbit anti-human somatostatin (Dako, Carpinteria, CA, USA) (final dilution 1:500) and rabbit anti-human pancreatic polypeptide (Chemicon International, Inc., Temecula, CA, USA) (final dilution 1:2000)³¹. Insulin and endocrine non-beta cells were visualized with Alexa Fluor 488 and 555 (final dilution 1:400) under a fluorescent microscope. Nuclei were stained with 300 nM DAPI (Life Technologies). Beta cell mass and endocrine non-beta cell mass was obtained by multiplying the weight of the graft by the relative beta or endocrine non-beta cell volume respectively³¹.

Beta cell vascular density. Graft sections were double-stained for endothelial cells with a CD31 antibody and for beta cells with an insulin antibody. CD31 staining was performed using a mouse monoclonal anti-human antibody (DAKO, Carpinteria, CA, USA) for human grafts, and a rabbit polyclonal anti-mouse antibody (Abcam, Cambridge, UK) for mouse grafts, and visualized with the EnVision+ System-HRP (DAKO, Carpinteria, CA, USA). For insulin double-staining, sections stained for CD31 were incubated with a rabbit polyclonal anti-insulin antibody (Santa Cruz Biotechnology, Inc., Dallas, TX, USA) and visualized with the EnVision+ System-HRP. Vascular density was determined by point counting morphometry, dividing the number of intercepts over CD31-positive endothelial cells located in the insulin-positive beta-cell area by the number of intercepts over the whole beta-cell area³².

Statistical Analysis

Results were expressed as means \pm SEM. Statistics were performed using SPSS 14.0 (Chicago, IL, USA) for Windows or GraphPad Prism 4 software (La Jolla, CA, USA), and differences between means were evaluated using the Student's *t*-test or the one-way analysis of variance

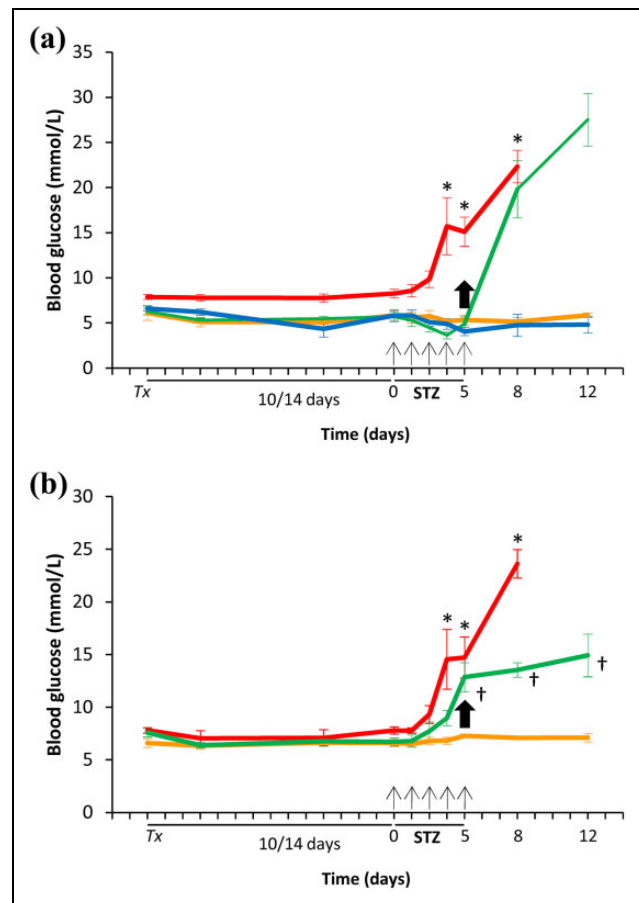


Figure 2. Metabolic evolution in mice transplanted with human and mouse islets, and treated with STZ. (a) Human islet transplantation. Green: Transplanted with 2000 islets, STZ treated ($n = 8$). Blue: Transplanted with 800 islets, STZ treated ($n = 9$). Red: Non-transplanted, STZ treated ($n = 9$). Orange: Transplanted with islets, vehicle treated ($n = 6$). Values are means \pm SEM. ANOVA, $p < 0.0001$, with post-hoc Tukey's test for multiple comparisons, $*p < 0.05$ v. STZ-treated and transplanted, and vehicle-treated and transplanted groups. (b) Mouse islet transplantation. Green: Transplanted, STZ treated ($n = 8$). Red: Non-transplanted, STZ treated ($n = 9$). Orange: Transplanted, vehicle treated ($n = 7$). Values are means \pm SEM. ANOVA, $p < 0.0001$, with post-hoc Tukey's test for multiple comparisons, $*p < 0.05$ v. STZ-treated and transplanted, and vehicle-treated and transplanted groups; $\dagger p < 0.001$ v. vehicle-treated and transplanted group. Tx: transplantation day; STZ: streptozotocin; Arrows: STZ injection. Bold arrow: removal of the graft in transplanted (2000 islets) and treated with either STZ (green) or vehicle (orange) groups.

(ANOVA) combined with Tukey's test for post-hoc analysis, as appropriate. A *p* value of less than 0.05 was considered significant.

Results

Metabolic Outcome

Human islets induced a mild reduction in blood glucose after transplantation into normoglycemic mice, in agreement with

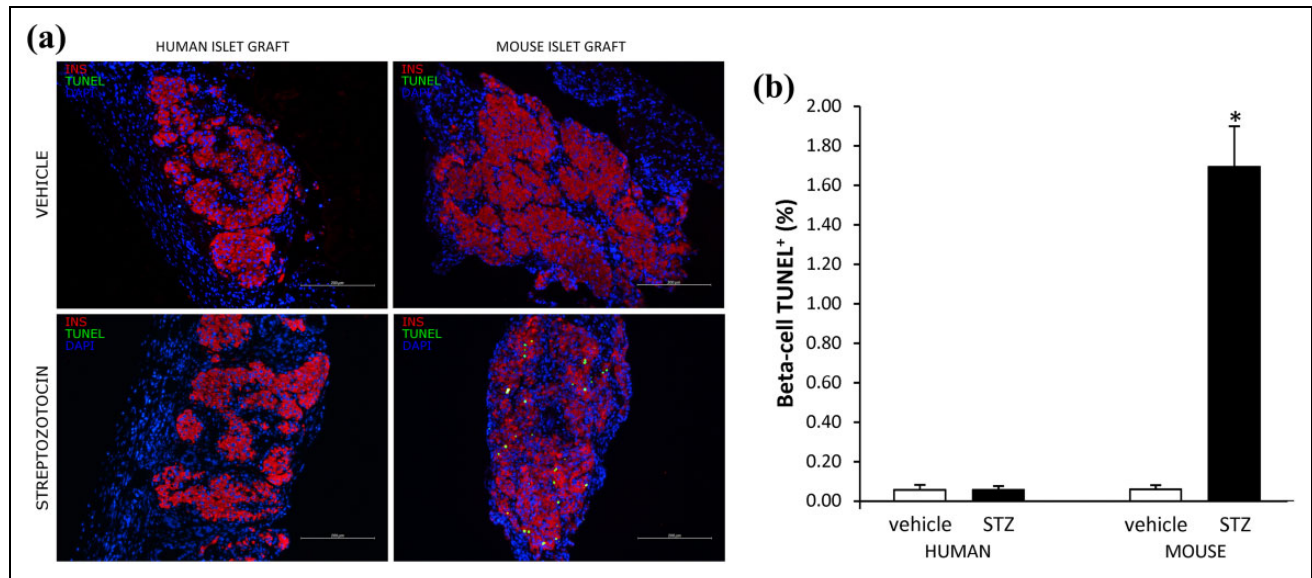


Figure 3. Beta cell death in human and mouse islet grafts. (a) Representative images of mouse and human islet grafts from vehicle- and STZ-treated groups double stained for insulin (red) and TUNEL (green). (b) Quantification of beta cell death in human and mouse islet grafts after vehicle ($n = 6$ and 8 respectively, white bars) or STZ ($n = 7$ in each group, black bars) injection. Values are means \pm SEM. Student's t-test * $p < 0.001$.

the different range of normal glucose values in humans and rodents³³. All animals transplanted with human islets remained normoglycemic after STZ injection, even when they were transplanted with only 800 human islets, and maintained blood glucose values similar to those of the vehicle-treated group (Figure 2(a)). When human islet grafts were harvested after last STZ injection, all animals developed acute and severe hyperglycemia, confirming that transplanted human islets were responsible for the maintenance of normoglycemia after STZ injection. Accordingly, the pancreases of transplanted and STZ-treated groups showed only a few insulin-positive beta cells at the end of follow up, consistent with STZ-induced death of most beta cells (supplementary Figure 1). All non-transplanted animals, and 87% of recipients transplanted with mouse islets, developed diabetes before graft removal (Figure 2(b)).

Beta Cell Death and Mass in Human and Mouse Islet Grafts

In transplanted mouse islets, beta cell death was increased (Figure 3) and beta cell mass was reduced (Figure 4(a)) after STZ injection. The 40% reduction in beta cell mass in mouse islet grafts after the fifth STZ injection is consistent with the previously reported islet loss in the endogenous pancreas in the multiple low-dose STZ model³⁴. In contrast, beta cell death and mass in transplanted human islets was similar after STZ or vehicle injection. Similar to differences in initially transplanted islet mass in human and mouse grafts, beta cell mass was 10 times higher in human grafts harvested from both STZ- and vehicle-injected mice

(0.91 ± 0.13 mg and 0.73 ± 0.081 mg respectively) than in mouse grafts transplanted to vehicle-injected recipients (0.080 ± 0.017 mg), suggesting a comparable survival of human and mouse beta cells after transplantation. In mouse and human islet grafts, the endocrine non-beta cell mass was similar in STZ- and vehicle-injected mice (mouse islet graft: 0.017 ± 0.0033 mg and 0.018 ± 0.0043 mg); (human islet graft: 0.43 ± 0.087 mg and 0.44 ± 0.105 mg) (Figure 4(b)), confirming the beta cell selectivity of STZ toxicity.

Beta Cell Vascular Density in Islet Grafts

Beta cell vascular density was determined in islet grafts harvested 6 h after the last STZ injection to ensure that they were revascularized when STZ was injected. Vascular density was similar in STZ- and vehicle-injected groups, both in human and mouse islet grafts (Figure 5). Vascular density was lower in human compared to mouse islet grafts.

Discussion

In this study, we describe a model for experimental human islet transplantation into STZ-diabetic mice in which, taking advantage of the well-known resistance of human beta cells to STZ damage^{12–14}, STZ injection was performed after transplantation when islets were already engrafted and vascularized. We found no detectable toxic effects of STZ on transplanted human islets, as indicated by the maintenance of normal fed blood glucose and the absence of changes in beta cell death and mass in islet grafts after STZ injection. The model is more convenient, cost-saving, and increases the welfare of the animals.

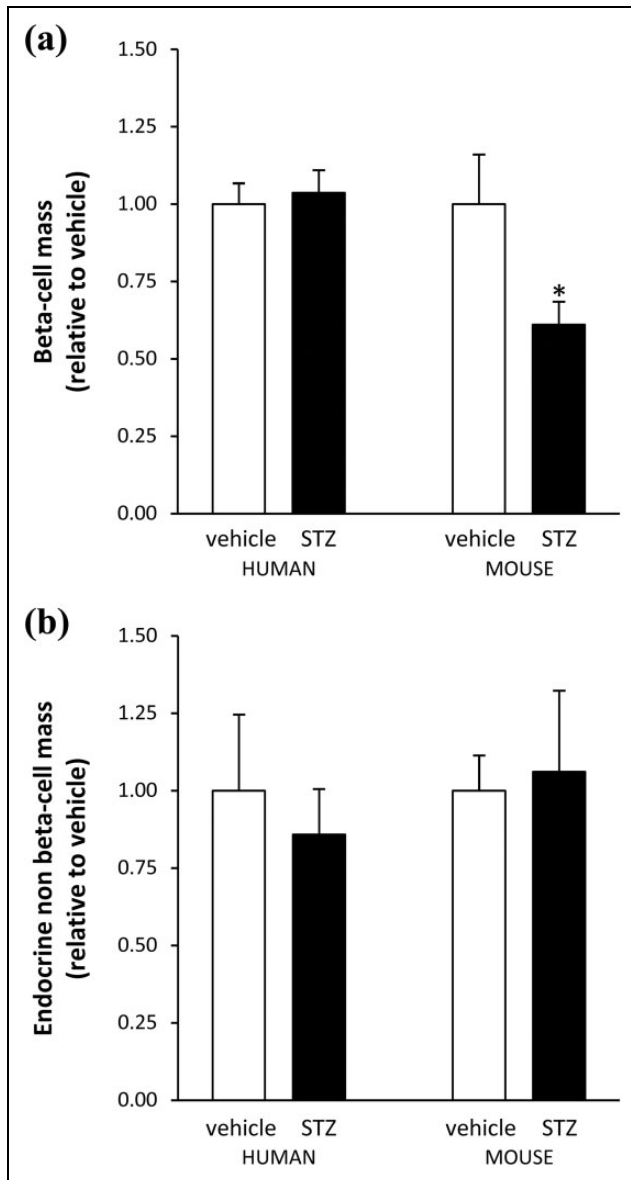


Figure 4. Beta cell mass and endocrine non-beta cell mass in human and mouse islet grafts. (a) Beta cell mass in human and mouse islet grafts after vehicle (white bar) or STZ (black bar) injection. (b) Endocrine non-beta cell mass in human and mouse islet grafts after vehicle (white bar) or STZ (black bar) injection. Values are means \pm SEM. Student's *t*-test * $p < 0.02$.

Differences in beta cell susceptibility to STZ damage between humans and rodents, as well as among different rodent strains, are well known^{13,14,35}. Rodent beta cells are very sensitive to the toxic effects on STZ, while human beta cells are highly resistant to STZ. The resistance of human transplanted islets to high doses of STZ was reported by Yang et al.¹⁴ that showed sustained normoglycemia and maintained beta granulation in islet grafts after STZ injection. However, they did not quantify beta cell death nor mass in the grafts, and recurrence of hyperglycemia after graft harvesting was not confirmed, an essential step to

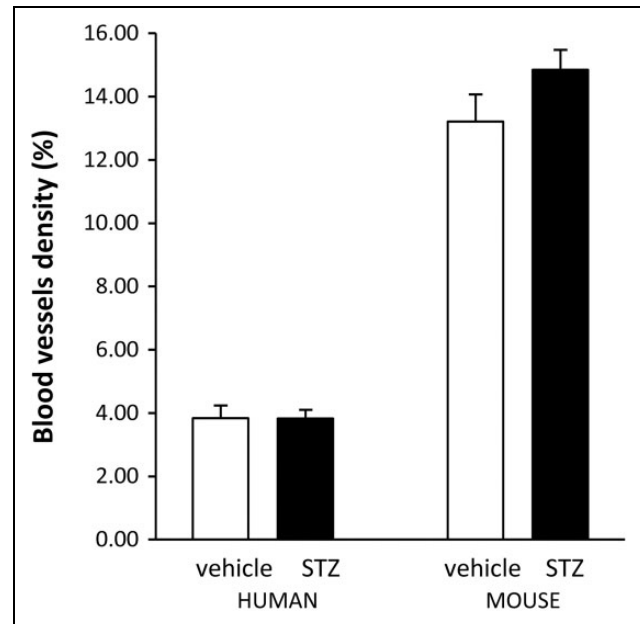


Figure 5. Beta cell vascular density in human and mouse islet grafts. Quantification of beta cell vascular density in human and mouse islet grafts after vehicle (white bar) or STZ (black bar) injection. Values are means \pm SEM.

prove that transplanted islets were responsible for the maintenance of normoglycemia after STZ injection. In experimental human islet transplantation this assessment is particularly important because it has been reported that insulin treatment prevents the diabetogenic action of STZ in rodents, probably by a combination of decreased cellular activity of beta cells and reduced expression of GLUT-2 in insulin treated animals³⁶. Thus, the insulin secreted by human transplanted islets, which induces a mild reduction in blood glucose, could provide some protection to the endogenous beta cells of recipient mice when STZ is injected. In our model, the development of hyperglycemia in all STZ-injected animals after graft harvesting confirmed that the endogenous pancreatic beta cells have been severely damaged by STZ injection, and that normoglycemia was maintained by the preserved beta cell function of transplanted human islets. Moreover, we show that transplanted beta cell death was not increased and beta cell mass was preserved after STZ injection. As expected, animals transplanted with mouse islets showed increased beta cell death and reduced beta cell mass in the graft, and developed severe hyperglycemia after STZ injection.

Graft vascularization was determined to confirm that injected STZ could reach the islet grafts, and that preservation of transplanted beta cell function and survival was not due to lack of exposure to STZ. We show that islet grafts were already vascularized when STZ was injected, and that vascular density was similar in STZ- and vehicle-treated animals in both mice and human grafts, indicating that STZ did not modify the islet-graft vasculature. Vascular density

was lower in human islet grafts, in agreement with known data about vascularization of human and mouse islets in the endogenous pancreas³⁷. The results provide additional indirect support to the concept that the absence of deleterious effects of STZ injection in islet grafts was due to the resistance of human beta cells to STZ toxicity.

The model that we describe has several advantages. First, it is not necessary to maintain a pool of chronically hyperglycemic immunodeficient recipients for undetermined periods of time, waiting for a human islet preparation to become available. These animals require additional care, including daily treatment with insulin, and they increase the burden and cost of the experiments. Second, the model reduces the number of human islets that must be transplanted. It is well established that restoration of normoglycemia in STZ-diabetic recipients requires the transplantation of a higher islet number than that needed to maintain normoglycemia^{38–40}. In our model normoglycemia was maintained with the transplantation of just 800 human islets, a clearly insufficient islet mass to restore normoglycemia when transplanted to STZ-diabetic recipients^{28,29}. Third, the model can also reduce the number of animals used in the experiments. The recipients of human islet transplantation are usually frail immunodeficient mice. After STZ injection, and despite insulin treatment, their condition often deteriorates, and mortality is increased⁴¹. Thus, the survival, and also the welfare, of the animals is increased in the current model. Moreover, the number of animals to be injected with STZ is precisely known, since they have already been transplanted, and this may additionally reduce the use of animals. Fourth, the model is closer to the usual practice in clinical islet transplantation, where normoglycemia is maintained before and after the procedure to avoid the deleterious effects of hyperglycemia on beta cells. In brief, the procedure is convenient, reduces the workload of animal caretakers and investigators, reduces the number of islets and of animals required for transplantation, and it increases the comfort of the animals.

In summary, we have shown that the administration of STZ after human islet transplantation does not damage the grafted beta cells and is a more convenient and affordable model for pre-clinical human islet transplantation. The model may also be valuable to assess the function of insulin-producing cells differentiated from human embryonic stem cells or other human cell types.

Acknowledgments

We thank Cristofer Garcia for skillful technical assistance.

Ethical Approval

The isolation and the usage of human islets were approved by the Ethics Committee of Hospital de Bellvitge. All procedures in the animal experiment described in the study were reviewed and approved by the Ethical Committee for Animal Experimentation of the Bellvitge Biomedical Research Institute (IDIBELL).

Statement of Human and Animal Rights

Human Rights: The procedures and the experiments we've performed with appropriate consent and ethical approval from Ethics Committee of Hospital de Bellvitge. Animal Rights: The experiments on animals were conducted in accordance with local Ethical Committee laws and regulations as regards care and use of laboratory animals.

Statement of Informed Consent

The human islets were obtained with written informed consent from donors' relatives.


Declaration of Conflicting Interests

The author(s) declared no potential conflicts of interest with respect to the research, authorship, and/or publication of this article.

Funding

The author(s) disclosed receipt of the following financial support for the research, authorship, and/or publication of this article: This work was supported by grants from Instituto de Salud Carlos III (ISCIII) (P1600462), ACCIÓ (Catalonia Trade & Investment; Generalitat de Catalunya) in the context of ADVANCE.CAT (EM), and the European Community under the ERDF operational program (European Regional Development Fund, FEDER) 'a way to build Europe'. CIBER of Diabetes and Associated Metabolic Diseases (CIBERDEM) is an initiative from ISCIII.

ORCID iD

Elisabet Estil-les  <http://orcid.org/0000-0002-3100-4325>

Supplemental Material

Supplemental material for this article is available online.

References

- Hosokawa M, Dolci W, Thorens B. Differential sensitivity of GLUT1- and GLUT2-expressing beta cells to streptozotocin. *Biochem Biophys Res Commun*. 2001;289(5):1114–1117.
- Szkudelski T. The mechanism of alloxan and streptozotocin action in B cells of the rat pancreas. *Physiol Res*. 2001;50(6):537–546.
- Lenzen S. The mechanisms of alloxan- and streptozotocin-induced diabetes. *Diabetologia*. 2008;51(2):216–226.
- Wang Z, Gleichmann H. GLUT2 in pancreatic islets: crucial target molecule in diabetes induced with multiple low doses of streptozotocin in mice. *Diabetes*. 1998;47(1):50–56.
- Elsner M, Guldbakke B, Tiedge M, Munday R, Lenzen S. Relative importance of transport and alkylation for pancreatic beta-cell toxicity of streptozotocin. *Diabetologia*. 2000;43(12):1528–1533.
- LeDoux SP, Woodley SE, Patton NJ, Wilson GL. Mechanisms of nitrosourea-induced beta-cell damage. Alterations in DNA. *Diabetes*. 1986;35(8):866–872.
- Wilson GL, Hartig PC, Patton NJ, LeDoux SP. Mechanisms of nitrosourea-induced beta-cell damage. Activation of poly (ADP-ribose) synthetase and cellular distribution. *Diabetes*. 1988;37(2):213–216.

8. Murata M, Takahashi A, Saito I, Kawanishi S. Site-specific DNA methylation and apoptosis: induction by diabetogenic streptozotocin. *Biochem Pharmacol.* 1999;57(8):881–887.
9. Schnedl WJ, Ferber S, Johnson JH, Newgard CB. STZ transport and cytotoxicity. Specific enhancement in GLUT2-expressing cells. *Diabetes.* 1994;43(11):1326–1333.
10. De Vos A, Heimberg H, Quartier E, Huypens P, Bouwens L, Pipeleers D, Schuit F. Human and rat beta cells differ in glucose transporter but not in glucokinase gene expression. *J Clin Invest.* 1995;96(5):2489–2495.
11. McCulloch LJ, van de Bunt M, Braun M, Frayn KN, Clark A, Gloyn AL. GLUT2 (SLC2A2) is not the principal glucose transporter in human pancreatic beta cells: implications for understanding genetic association signals at this locus. *Mol Genet Metab.* 2011;104(4):648–653.
12. Tuch BE, Turtle JR, Simeonovic CJ. Streptozotocin is not toxic to the human fetal B cell. *Diabetologia.* 1989;32(9):678–684.
13. Eizirik DL, Pipeleers DG, Ling Z, Welsh N, Hellerström C, Andersson A. Major species differences between humans and rodents in the susceptibility to pancreatic beta-cell injury. *Proc Natl Acad Sci USA.* 1994;91(20):9253–9256.
14. Yang H, Wright JR. Human beta cells are exceedingly resistant to streptozotocin in vivo. *Endocrinology.* 2002;143(7):2491–2495.
15. White FR. Streptozotocin. *Cancer Chemother Rep.* 1963;30:49–53.
16. Schein PS, Cooney DA, Vernon ML. The use of nicotinamide to modify the toxicity of streptozotocin diabetes without loss of antitumor activity. *Cancer Res.* 1967;27(12):2324–2332.
17. Schein PS, O'Connell MJ, Blom J, Hubbard S, Magrath IT, Bergevin P, Wiernik PH, Ziegler JL, DeVita VT. Clinical antitumor activity and toxicity of streptozotocin (NSC-85998). *Cancer.* 1974;34(4):993–1000.
18. Brentjens R, Saltz L. Islet cell tumors of the pancreas: the medical oncologist's perspective. *Surg Clin North Am.* 2001;81(3):527–542.
19. Davalli AM, Ogawa Y, Scaglia L, Wu YJ, Hollister J, Bonner-Weir S, Weir GC. Function, mass, and replication of porcine and rat islets transplanted into diabetic nude mice. *Diabetes.* 1995;44(1):104–111.
20. Davalli AM, Ogawa Y, Ricordi C, Scharp DW, Bonner-Weir S, Weir GC. A selective decrease in the beta cell mass of human islets transplanted into diabetic nude mice. *Transplantation.* 1995;59(6):817–820.
21. Zhao M, Amiel SA, Christie MR, Rela M, Heaton N, Huang GC. Insulin-producing cells derived from human pancreatic non-endocrine cell cultures reverse streptozotocin-induced hyperglycaemia in mice. *Diabetologia.* 2005;48(10):2051–2061.
22. Xin Y, Jiang X, Wang Y, Su X, Sun M, Zhang L, Tan Y, Wintergerst KA, Li Y. Insulin-producing cells differentiated from human bone marrow mesenchymal stem cells in vitro ameliorate streptozotocin-induced diabetic hyperglycemia. *Plos One.* 2016;11(1):e0145838.
23. Domouky AM, Hegab AS, Al-Shahat A, Raafat N. Mesenchymal stem cells and differentiated insulin producing cells are new horizons for pancreatic regeneration in type I diabetes mellitus. *Int J Biochem Cell Biol.* 2017;87:77–85.
24. Montolio M, Biarnés M, Téllez N, Escoriza J, Soler J, Montanya E. Interleukin-1beta and inducible form of nitric oxide synthase expression in early syngeneic islet transplantation. *J Endocrinol.* 2007;192(1):169–177.
25. Téllez N, Montolio M, Biarnés M, Castaño E, Soler J, Montanya E. Adenoviral overexpression of interleukin-1 receptor antagonist protein increases beta-cell replication in rat pancreatic islets. *Gene Ther.* 2005;12(2):120–128.
26. Estil les E, Téllez N, Escoriza J, Montanya E. Increased β -cell replication and β -cell mass regeneration in syngeneically transplanted rat islets overexpressing insulin-like growth factor II. *Cell Transplant.* 2012;21(10):2119–2129.
27. Ihm SH, Matsumoto I, Sawada T, Nakano M, Zhang HJ, Ansite JD, Sutherland DE, Hering BJ. Effect of donor age on function of isolated human islets. *Diabetes.* 2006;55(5):1361–1368.
28. Matsumoto I, Sawada T, Nakano M, Sakai T, Liu B, Ansite JD, Zhang HJ, Kandaswamy R, Sutherland DE, Hering BJ. Improvement in islet yield from obese donors for human islet transplants. *Transplantation.* 2004;78(6):880–885.
29. Toso C, McCall M, Emamaullee J, Merani S, Davis J, Edgar R, Pawlick R, Kin T, Knudsen LB, Shapiro AM. Liraglutide, a long-acting human glucagon-like peptide 1 analogue, improves human islet survival in culture. *Transpl Int.* 2010;23(3):259–265.
30. Nacher M, Estil Les E, Garcia A, Nadal B, Pairó M, Garcia C, Secanella L, Novials A, Montanya E. Human serum versus human serum albumin supplementation in human islet pre-transplantation culture: in vitro and in vivo assessment. *Cell Transplant.* 2016;25(2):343–352.
31. Montanya E, Téllez N. Pancreatic remodeling: beta-cell apoptosis, proliferation and neogenesis, and the measurement of beta-cell mass and of individual beta-cell size. *Methods Mol Biol.* 2009;560:137–158.
32. Olerud J, Johansson M, Lawler J, Welsh N, Carlsson PO. Improved vascular engraftment and graft function after inhibition of the angiostatic factor thrombospondin-1 in mouse pancreatic islets. *Diabetes.* 2008;57(7):1870–1877.
33. Rodriguez-Diaz R, Molano RD, Weitz JR, Abdulreda MH, Berman DM, Leibiger B, Leibiger IB, Kenyon NS, Ricordi C, Pileggi A, Caicedo A, Berggren PO. Paracrine Interactions within the Pancreatic Islet Determine the Glycemic Set Point. *Cell Metab.* 2018;27(3):549–558.e4.
34. O'Brien BA, Harmon BV, Cameron DP, Allan DJ. Beta-cell apoptosis is responsible for the development of IDDM in the multiple low-dose streptozotocin model. *J Pathol.* 1996;178(2):176–181.
35. Deeds MC, Anderson JM, Armstrong AS, Gastineau DA, Hiddinga HJ, Jahangir A, Eberhardt NL, Kudva YC. Single dose streptozotocin-induced diabetes: considerations for study

- design in islet transplantation models. *Lab Anim.* 2011;45(3):131–140.
36. Thulesen J, Orskov C, Holst JJ, Poulsen SS. Short-term insulin treatment prevents the diabetogenic action of streptozotocin in rats. *Endocrinology.* 1997;138(1):62–68.
37. Brissova M, Shostak A, Fligner CL, Revetta FL, Washington MK, Powers AC, Hull RL. Human islets have fewer blood vessels than mouse islets and the density of islet vascular structures is increased in type 2 diabetes. *J Histochem Cytochem.* 2015;63(8):637–645.
38. Merino J, Nacher V, Raurell M, Aranda O, Soler J, Montanya E. Improved outcome of islet transplantation in insulin-treated diabetic mice: effects on beta-cell mass and function. *Diabetologia.* 1997;40(9):1004–1010.
39. Merino J, Nacher V, Raurell M, Biarnés M, Soler J, Montanya E. Optimal insulin treatment in syngeneic islet transplantation. *Cell Transplant.* 2000;9(1):11–18.
40. Montaña E, Bonner-Weir S, Weir GC. Beta cell mass and growth after syngeneic islet cell transplantation in normal and streptozotocin diabetic C57BL/6 mice. *J Clin Invest.* 1993;91(3):780–787.
41. Graham ML, Janecek JL, Kittredge JA, Hering BJ, Schuurman HJ. The streptozotocin-induced diabetic nude mouse model: differences between animals from different sources. *Comp Med.* 2011;61(4):356–360.