

SCIENTIFIC DATA



OPEN

DATA DESCRIPTOR

DISPERSE, a trait database to assess the dispersal potential of European aquatic macroinvertebrates

Romain Sarremejane^{1,2,16}✉, Núria Cid^{3,4,16}, Rachel Stubbington¹, Thibault Datry³, Maria Alp³, Miguel Cañedo-Argüelles⁴, Adolfo Cordero-Rivera⁵, Zoltán Csabai^{6,7}, Cayetano Gutiérrez-Cánovas^{8,9}, Jani Heino¹⁰, Maxence Forcellini³, Andrés Millán¹¹, Amael Paillex^{12,13}, Petr Pařil⁷, Marek Poláček⁷, José Manuel Tierno de Figueroa¹⁴, Philippe Usseglio-Polatera¹⁵, Carmen Zamora-Muñoz¹⁴ & Núria Bonada⁴

Dispersal is an essential process in population and community dynamics, but is difficult to measure in the field. In freshwater ecosystems, information on biological traits related to organisms' morphology, life history and behaviour provides useful dispersal proxies, but information remains scattered or unpublished for many taxa. We compiled information on multiple dispersal-related biological traits of European aquatic macroinvertebrates in a unique resource, the DISPERSE database. DISPERSE includes nine dispersal-related traits subdivided into 39 trait categories for 480 taxa, including Annelida, Mollusca, Platyhelminthes, and Arthropoda such as Crustacea and Insecta, generally at the genus level. Information within DISPERSE can be used to address fundamental research questions in metapopulation ecology, metacommunity ecology, macroecology and evolutionary ecology. Information on dispersal proxies can be applied to improve predictions of ecological responses to global change, and to inform improvements to biomonitoring, conservation and management strategies. The diverse sources used in DISPERSE complement existing trait databases by providing new information on dispersal traits, most of which would not otherwise be accessible to the scientific community.

¹School of Science and Technology, Nottingham Trent University, Nottingham, NG11 8NS, UK. ²Department of Environmental Science, Policy, and Management, University of California, Berkeley, Berkeley, CA 94720, USA. ³INRAE, UR RiverLy, centre de Lyon-Villeurbanne, 5 rue de la Doua CS70077, 69626, Villeurbanne, Cedex, France. ⁴Grup de Recerca Freshwater Ecology, Hydrology and Management (FEHM), Departament de Biologia Evolutiva, Ecologia i Ciències Ambientals, Facultat de Biologia, Institut de Recerca de la Biodiversitat (IRBio), Universitat de Barcelona (UB), Diagonal 643, 08028, Barcelona, Catalonia, Spain. ⁵ECOEVO Lab, E.E. Forestal, Universidade de Vigo, Campus A Xunqueira, 36005, Pontevedra, Spain. ⁶Department of Hydrobiology, University of Pécs, Ifjúság útja 6, H7624, Pécs, Hungary. ⁷Department of Botany and Zoology, Faculty of Science, Masaryk University, Kotlářská 2, 61137, Brno, Czech Republic. ⁸Centre of Molecular and Environmental Biology (CBMA), Department of Biology, University of Minho, Braga, Portugal. ⁹Institute of Science and Innovation for Bio-Sustainability (IB-S), University of Minho, Braga, Portugal. ¹⁰Finnish Environment Institute, Freshwater Centre, Paavo Havaksen Tie 3, FI-90570, Oulu, Finland. ¹¹Department of Ecology and Hydrology, Biology Faculty, Murcia University, Campus de Espinardo, 30100, Murcia, Spain. ¹²Department of Aquatic Ecology, Eawag, Swiss Federal Institute of Aquatic Sciences, Überlandstrasse 133, CH-8600, Dübendorf, Switzerland. ¹³ECOTEC Environment SA, 1203, Geneva, Switzerland. ¹⁴Departamento de Zoología, Facultad de Ciencias, Universidad de Granada, Avenida Fuente Nueva, s/n, 18071, Granada, Spain. ¹⁵Université de Lorraine, CNRS, UMR 7360, LIEC, Laboratoire Interdisciplinaire des Environnements Continentaux, F-57070, Metz, France. ¹⁶These authors contributed equally: Romain Sarremejane, Núria Cid. ✉e-mail: romain.sarremejane@gmail.com

Background & Summary

Dispersal is a fundamental ecological process that affects the organization of biological diversity at multiple temporal and spatial scales^{1,2}. Dispersal strongly influences metapopulation and metacommunity dynamics through the movement of individuals and species, respectively³. A better understanding of dispersal processes can inform biodiversity management practices^{4,5}. However, dispersal is difficult to measure directly, particularly for small organisms, including most invertebrates⁶. Typically, dispersal is measured for single species^{7,8} or combinations of few species within one taxonomic group^{9–11} using methods based on mark and recapture, stable isotopes, or population genetics^{5,12}. Such methods can directly assess dispersal events but are expensive, time-consuming, and thus impractical for studies conducted at the community level or at large spatial scales. In this context, taxon-specific biological traits represent a cost-effective alternative that may serve as proxies for dispersal^{5,6,13,14}. These traits interact with landscape structure to determine patterns of effective dispersal^{15,16}.

Aquatic macroinvertebrates inhabiting freshwater ecosystems include taxa with diverse dispersal modes and abilities (Fig. 1). For species with complex life cycles, such as some insects, this diversity is enhanced by life stages with different dispersal strategies. For example, aquatic juveniles of many insects disperse actively and/or passively in water whereas adults fly over land¹⁷. In all cases, dispersal is affected by multiple traits relating to the morphology^{6,12}, life history and behaviour² of different life stages.

We compiled and the harmonized information on dispersal-related traits of freshwater macroinvertebrates from across Europe, including both aquatic and aerial (i.e. flying) stages. Although information on some dispersal-related traits such as body size, reproduction, locomotion and dispersal mode is available in online databases for European^{18–20} and North American taxa²¹, other relevant information is scattered across published literature and unpublished data. Informed by the input of 19 experts, we built a comprehensive database containing nine dispersal-related traits subdivided into 39 trait categories for 480 European taxa. Dispersal-related traits were selected and their trait categories fuzzy-coded²² following an approach comparable to that used to develop existing databases²³. Our aim was to provide a single resource facilitating the incorporation of dispersal into ecological research, and to create the basis for a global dispersal database.

Methods

Dispersal-related trait selection criteria. We defined dispersal as the unidirectional movement of individuals from one location to another¹, assuming that population-level dispersal rates depend on both the number of dispersing propagules and dispersers' ability to move across a landscape^{11,24}.

We selected nine dispersal-related morphological, behavioural and life-history traits (Online-only Table 1). Selected morphological traits were maximum body size, female wing length and wing pair type, the latter two relating only to flying adult insects. Maximum body size influences organisms' dispersal⁶, especially for active dispersers²⁵, with larger animals more capable of active dispersal over longer distances (e.g. flying adult dragonflies⁶, Fig. 1). Wing morphology, and in particular wing length, is related to the dispersal of flying adult insects^{6,26}. Female wing length was selected because females connect and sustain populations through oviposition, thus representing adult insects' colonization capacity²⁷. Females with larger wings are likely to oviposit farther from their source population^{6,10,28}. We also described insect wing morphology as wing pair types, i.e. one or two pairs of wings, and the presence of halteres, elytra or hemielytra, or small hind wings¹² (Fig. 1). Selected life-history traits were adult life span, life-cycle duration, annual number of reproductive cycles and lifelong fecundity. Adult life span and life-cycle duration respectively reflect the adult (i.e. reproductive) and total life duration, with longer-lived animals typically having more dispersal opportunities¹³. The annual number of reproductive cycles and lifelong fecundity assess dispersal capacity based on potential propagule production, with multiple reproductive cycles and abundant eggs typically increasing the number of dispersal events⁶. Dispersal behaviour was represented by a taxon's predominant dispersal mode (passive and/or active, aquatic and/or aerial), and by its propensity to drift, which indicates the frequency of flow-mediated passive downstream dispersal events.

Data acquisition and compilation. A taxa list was generated based on the taxonomies used in existing European aquatic invertebrate databases^{18,20}. Trait information was sourced primarily from the literature using Google Scholar searches of keywords including trait names, synonyms and taxon names (Supplementary File 1, Table S1), and by searching in existing databases^{18,21}. Altogether, >300 peer-reviewed articles and book chapters were consulted. When no European studies were available, we considered information from other continents only if experts considered traits as comparable across regions. When published information was lacking, traits were coded based on authors' expert knowledge and direct measurements. Specifically, for 139 species in 69 genera of Coleoptera and Heteroptera, female wing lengths were characterized using measurements of 538 individuals in experts' reference collections, comprising organisms sampled in Finland, Greece and Hungary. The number of species measured within a genus varied between 1 and 10 in relation to the number of European species within each genus. For example, for the most species-rich genera, both common and rare species from northern and southern latitudes were included.

Fuzzy-coding approach and taxonomic resolution. Traits were coded using a 'fuzzy' approach, in which a value given to each trait category indicates if the taxon has no (0), weak (1), moderate (2) or strong (3) affinity with the category²². Affinities were determined based on the proportion of observations (i.e. taxon-specific information from the literature or measurements) or expert opinions that fell within each category for each trait²⁹. Fuzzy coding can incorporate intra-taxon variability when trait profiles differ among e.g. species within a genus, early and late instars of one species, or individuals of one species in different environments²⁹. Most traits were coded at genus level, but some Diptera and Annelida were coded at family, sub-family or tribe level because of their complex taxonomy, identification difficulties and the scarcity of reliable information about their traits.

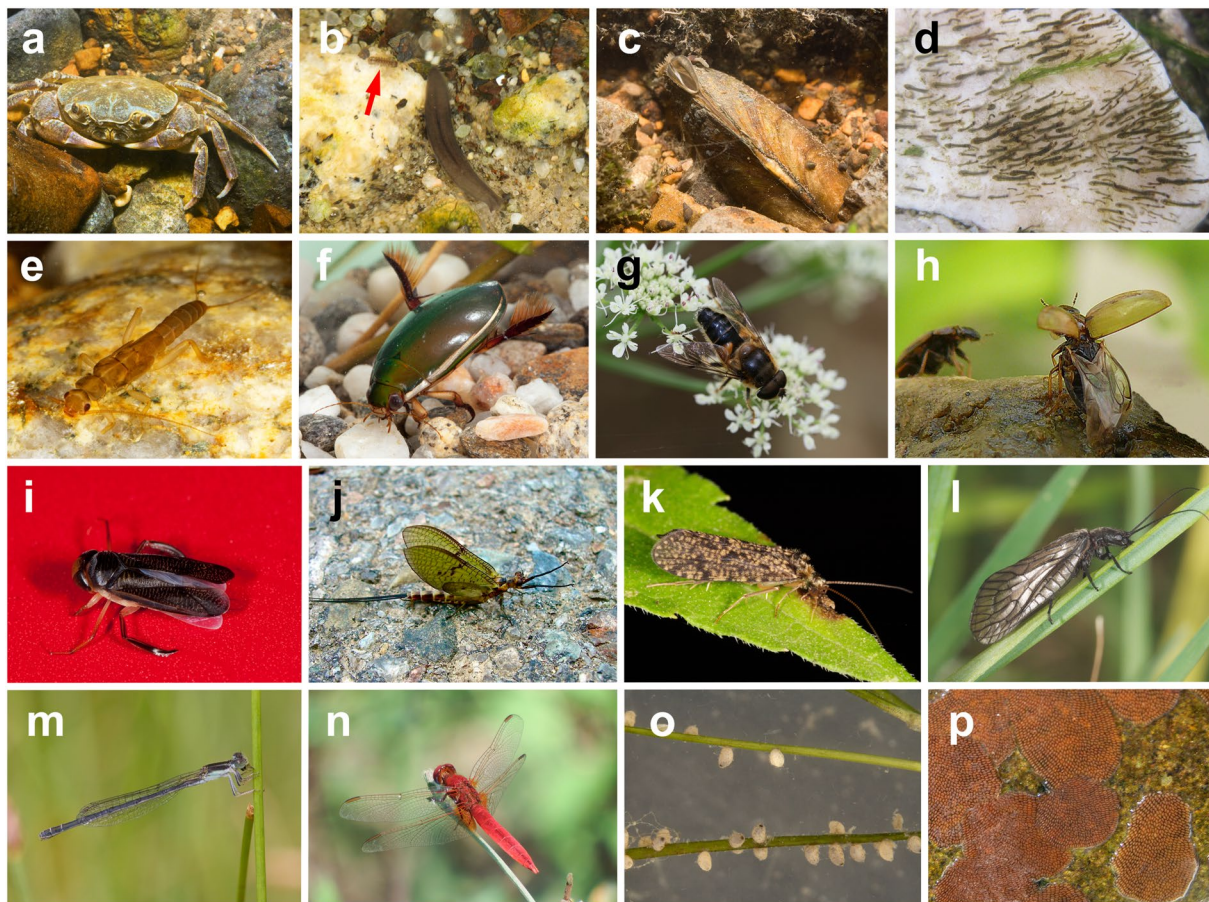


Fig. 1 The dispersal-related trait diversity of aquatic macroinvertebrates. Taxa that disperse in water include the crustacean genera *Potamon* (a) and *Asellus* (arrow in b), planarians (b), the bivalve mollusc genus *Unio* (c), insect larvae such as the Diptera genus *Simulium* (d) and Plecoptera genus *Leuctra* (e), and adult Coleoptera including the dytiscid genus *Cybister* (f). Such aquatic dispersers may move passively in the drift (c,d) and/or actively crawl or swim (a,b,e,f). Most adult insects have wings and can fly overland (f–n). Wings are morphologically diverse and include various types: one wing pair, as in Diptera such as the syrphid genus *Eristalis* (g); one pair of wings with elytra for Coleoptera including the genus *Enochrus* (h) or with hemelytra for Heteroptera such as the genus *Hesperocorixa* (i); two wing pairs including one pair of small hind wings for Ephemeroptera including the genus *Ephemera* (j); and two pairs of similar-sized wings for the Trichoptera genus *Polycentropus* (k), the Megaloptera genus *Sialis* (l) and the Odonata genera *Ischnura* (m) and *Crocothemis* (n). Wings range in size from a few mm in some Diptera (g) up to more than 3 cm (l–n), with the Odonata exemplifying the large morphologies. Taxa vary in the number of eggs produced per female, ranging from tens per reproductive cycle for most Coleoptera and Heteroptera such as the genus *Sigara* (o) to several hundreds in the egg masses of most Ephemeroptera and Trichoptera, such as those of the genus *Hydropsyche* (p). Credits: Adolfo Cordero-Rivera (a–g,i,k–n), Jesús Arribas (h), Pere Bonada (j), José Antonio Carbonell (o) and Maria Alp (p).

Data Records

DISPERSE can be downloaded as an Excel spreadsheet from the Intermittent River Biodiversity Analysis and Synthesis (IRBAS) webpage (irbas.inrae.fr) and the data repository Figshare³⁰.

The database comprises three sheets: DataKey, Data and Reference list. The “Datakey” sheet summarizes the content of each column in the “Data” sheet. The “Data” sheet includes the fuzzy-coded trait categories and cites the sources used to code each trait. The first six columns list the taxa and their taxonomy (group; family; tribe/sub-family or genus [depending on the level coded]; genus synonyms; lowest taxonomic resolution achieved) to allow users to sort and compile information. Sources are cited in chronological order by the surname of the first author and the year of publication. Expert evaluations are reported as “Unpublished” followed by the name of the expert providing the information. Direct measurements are reported as “Direct measurement from” followed by the expert’s name. The “Reference list” sheet contains the references cited in the “Data” sheet, organized in alphabetical order and then by date.

In total, the database contains nine dispersal-related traits divided into 39 trait categories for 480 taxa. Most (78%) taxa are insects, principally Coleoptera and Trichoptera, as these are, together with Diptera, the most diverse orders in freshwater ecosystems³¹. DISPERSE provides complete trait information for 61% of taxa, with

Trait	Categories
Maximum body size (cm)	<0.25
	≥0.25–0.5
	≥0.5–1
	≥1–2
	≥2–4
	≥4–8
	≥8
Female wing length (insects only) (mm)	<5
	≥5–10
	≥10–15
	≥15–20
	≥20–30
	≥30–40
	≥40–50
Wing pair type (insects only)	1 pair + halteres
	1 pair + elytra or hemelytra
	1 pair + small hind wings
	2 similar-sized pairs
Life-cycle duration	≤1 year
	>1 year
Adult life span	<1 week
	≥1 week–1 month
	≥1 month–1 year
	≥1 year
Lifelong fecundity (number of eggs per female)	<100
	≥100–1000
	≥1000–3000
	≥3000
Potential number of reproductive cycles per year	<1
	1
	>1
Dispersal strategy	Aquatic active
	Aquatic passive
	Aerial active
	Aerial passive
Propensity to drift	Rare/catastrophic
	Occasional
	Frequent

Table 1. Dispersal-related aquatic macroinvertebrate traits included in the DISPERSE database.

1–2 traits being incomplete for the 39% remaining taxa (Table 2, Fig. 2). The traits with the highest percentage of information across taxa were wing pair type and maximum body size, followed by dispersal strategy, life-cycle duration, potential number of reproductive cycles per year, and female wing length (Table 2). The percentage of completed information was lower for two life-history traits: adult life span and lifelong fecundity (Table 2).

Technical Validation

Most of the trait information (88%) originated from published literature (Supplementary File 1) and the remaining traits were coded based on expert knowledge (9%) and direct measurements (3%) (Table 2). The database states information sources for each trait and taxon, allowing users to evaluate data quality. Most traits were coded using multiple sources representing multiple species within a genus. When only one study was available, we supplemented this information with expert knowledge, to ensure that trait codes represented potential variability in the taxon.

Using insects as an example, we performed a fuzzy correspondence analysis (FCA)²² to visualize variability in trait composition among taxa (Fig. 3). Insect orders were clearly distinguished based on their dispersal-related traits, with 32% of the variation explained by the first two FCA axes. Wing pair type and lifelong fecundity had the highest correlation with axis A1 (coefficient 0.87 and 0.63, respectively). Female wing length (0.73) and maximum body size (0.55) were most strongly correlated with axis A2 (Fig. 3 and 4). For example, female Coleoptera typically produce few eggs and have intermediate maximum body sizes and wing lengths, Odonata produce an

Trait	Taxa completed (%)	Source of information (%)		
		Literature	Expert	Measured
Maximum body size	99	100		
Female wing length	95	57	12	31
Wing pair type	100	100		
Life-cycle duration	98	100		
Adult life span	79	65	35	
Lifelong fecundity	75	77	23	
Potential number of reproductive cycles per year	98	100		
Dispersal strategy	98	100		
Propensity to drift	80	90	10	
All traits	61	88	9	3

Table 2. Percentage of taxa completed and relative contribution of different sources of information (i.e. literature, expert knowledge, direct measurement) used to build the DISPERSE database.

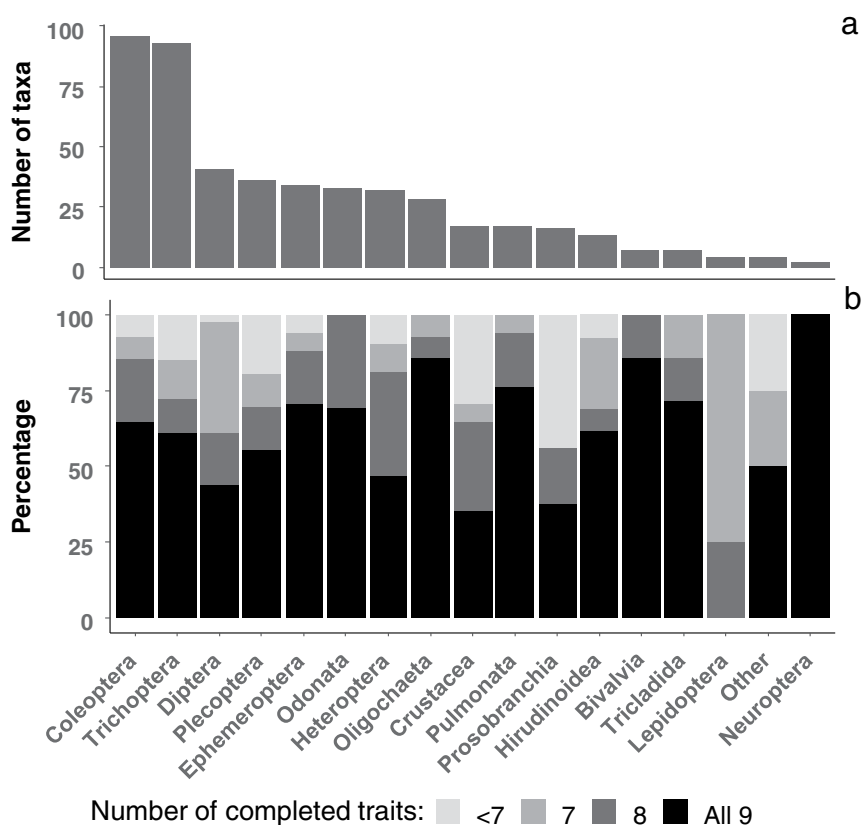


Fig. 2 Total number of taxa and percentage of the nine traits completed in each insect order and macroinvertebrate phylum, sub-phylum, class or sub-class. “Other” includes Hydrozoa, Hymenoptera, Megaloptera and Porifera, for which the database includes only one genus each.

intermediate number of eggs and have long wings, and Ephemeroptera produce many eggs and have short wings (Fig. 1 and 4).

The database currently represents a Europe-wide resource which can be updated and expanded as new information becomes available, to include more taxa and traits from across and beyond Europe. For example, additional information could be collected on other measures of wing morphology^{10,14} and functionality or descriptors of exogenous dispersal vectors such as wind and animals³². New data can be contributed by contacting the corresponding author or by completing the contact form on the IRBAS website (<http://irbas.inrae.fr/contact>), and the online database will be updated accordingly. DISPERSE lays the foundations for a global dispersal trait database, the lack of which is recognized as limiting research progress across multiple disciplines³³.

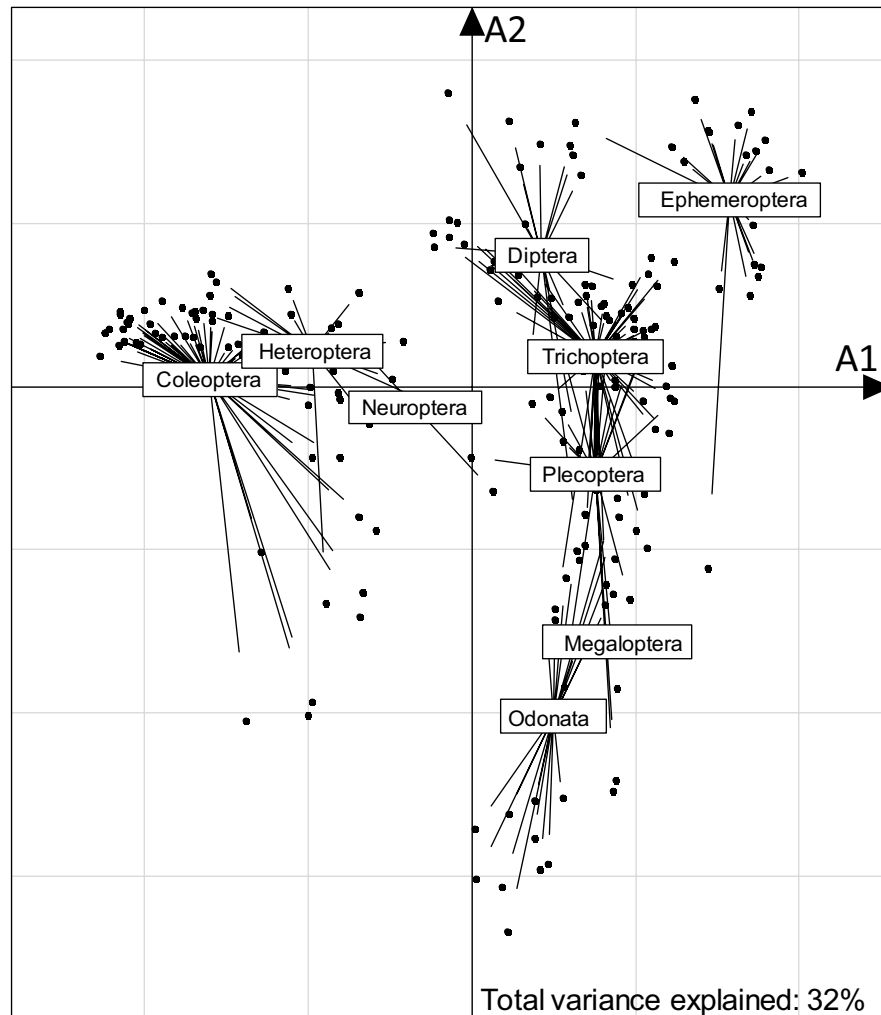


Fig. 3 Variability in the dispersal-related trait composition of all insect orders with complete trait profiles along fuzzy correspondence analysis axes A1 and A2. Dots indicate taxa and lines converge to the centroid of each order to depict within-group dispersion.

Usage Notes

DISPERSE is the first publicly available database describing the dispersal traits of aquatic macroinvertebrates and includes information on both aquatic and aerial (i.e. flying) life stages. It provides good coverage of macroinvertebrates at the genus level, which is generally considered as sufficient to capture biodiversity dynamics^{34–37}. It will promote incorporation of dispersal proxies into fundamental and applied population and community ecology in freshwater ecosystems⁵. In particular, metacommunity ecology may benefit from the use of dispersal traits^{15,38}, which enable classification of taxa according to their dispersal potential in greater detail. Such classification, used in combination with, for example, spatial distance measurements^{39,40}, could advance our understanding of the effects of regional dispersal processes on community assembly and biodiversity patterns. Improved knowledge of taxon-specific dispersal abilities may also inform the design of more effective management practices. For example, recognizing dispersal abilities in biomonitoring methods could inform enhancements to catchment-scale management strategies that support ecosystems adapting to global change^{41,42}. DISPERSE could also inform conservation strategies by establishing different priorities depending on organisms' dispersal capacities in relation to spatial connectivity⁴³.

DISPERSE could also improve species distribution models (SDMs), in which dispersal has rarely been considered due to insufficient data¹³, limiting the accuracy of model predictions^{44,45}. Recent trait-based approaches have begun to integrate dispersal into SDMs⁴⁵, and information from DISPERSE could increase model accuracy^{46,47}. Including dispersal in SDMs is especially relevant to assessments of biodiversity loss and species vulnerability to climate change^{46,48,49}. DISPERSE could also advance understanding of eco-evolutionary relationships and biogeographical phenomena. In an evolutionary context, groups with lower dispersal abilities should be genetically and taxonomically richer due to long-term isolation^{50,51}. From a biogeographical perspective, regions affected by glaciations should have species with greater dispersal abilities, enabling postglacial recolonization⁵².

By capturing different dispersal-related biological traits, DISPERSE provides information on organisms' potential ability to move between localities as well as on reproduction and recruitment¹⁵. Traits also facilitate

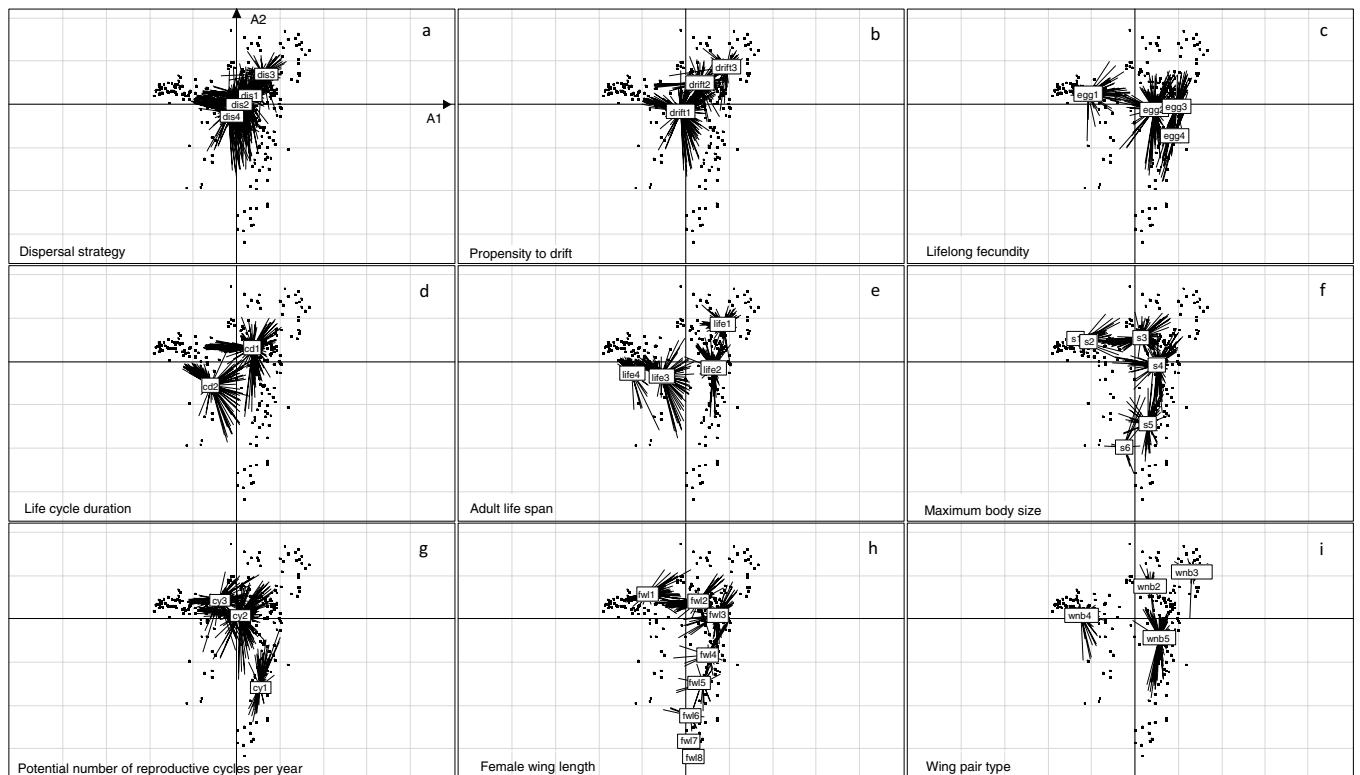


Fig. 4 Trait category locations in the fuzzy correspondence analysis ordination space for each trait of all insect orders with complete trait profiles: **(a)** Dispersal strategy = **dis1**: aquatic passive, **dis2**: aquatic active, **dis3**: aerial passive, **dis4**: aerial active; **(b)** Propensity to drift = **drift1**: rare/catastrophic, **drift2**: occasional, **drift3**: frequent; **(c)** Fecundity = **egg1**: < 100 eggs, **egg2**: ≥ 100–1000 eggs, **egg3**: 1000–3000 eggs, **egg4**: ≥ 3000 eggs; **(d)** Life-cycle duration = **cd1**: ≤ 1 year, **cd2**: > 1 year; **(e)** Adult life span = **life1**: < 1 week, **life2**: ≥ 1 week – 1 month, **life3**: ≥ 1 month – 1 year, **life4**: > 1 year; **(f)** Maximum body size (cm) = **s1**: < 0.25, **s2**: ≥ 0.25–0.5, **s3**: ≥ 0.5–1, **s4**: ≥ 1–2, **s5**: ≥ 2–4, **s6**: ≥ 4–8; **(g)** Potential number of reproductive cycles per year = **cy1**: < 1, **cy2**: 1, **cy3**: > 1; **(h)** Female wing length (mm) = **fw11**: < 5, **fw12**: ≥ 5–10, **fw13**: ≥ 10–15, **fw14**: ≥ 15–20, **fw15**: ≥ 20–30, **fw16**: ≥ 30–40, **fw17**: ≥ 40–50, **fw18**: ≥ 50; **(i)** Wing pair type = **wnb1**: 1 pair + halteres, **wnb2**: 1 pair + 1 pair of small hind wings, **wnb3**: 1 pair + 1 pair of elytra or hemelytra, **wnb4**: 1 pair + 1 pair of elytra or hemelytra, **wnb5**: 2 similar-sized pairs.

comparison of taxa with different dispersal strategies, which could inform studies conducted at large spatial scales, independent of taxonomy⁵³.

Users should note that the dispersal-related traits included in DISPERSE represent an indirect measure of dispersal, not effective dispersal. Therefore, the database is not intended to substitute population-level studies related to dispersal, but to act as a repository that collates and summarizes information from such studies. As freshwater biodiversity declines at unprecedented rates^{54,55}, collecting, harmonizing and sharing dispersal-related data on freshwater organisms will underpin evidence-informed initiatives that seek to support the resilience of ecosystems adapting to global change.

Code availability

Analyses were conducted and figures were produced using the R environment⁵⁶including the package ade4⁵⁷. Scripts are available at Figshare³⁰.

Received: 4 June 2020; Accepted: 21 October 2020;

Published online: 11 November 2020

References

- Bohonak, A. J. & Jenkins, D. G. Ecological and evolutionary significance of dispersal by freshwater invertebrates. *Ecol. Lett.* **6**, 783–796 (2003).
- Clobert, J., Baguette, M., Benton, T. G. & Bullock, J. M. *Dispersal Ecology and Evolution* (Oxford Univ. Press, 2012).
- Heino, J. *et al.* Metacommunity organisation, spatial extent and dispersal in aquatic systems: Patterns, processes and prospects. *Freshw. Biol.* **60**, 845–869 (2015).
- Barton, P. S. *et al.* Guidelines for using movement science to inform biodiversity policy. *Environ. Manage.* **56**, 791–801 (2015).
- Heino, J. *et al.* Integrating dispersal proxies in ecological and environmental research in the freshwater realm. *Environ. Rev.* **25**, 334–349 (2017).
- Rundle, S. D., Bilton, D. T. & Foggo, A. in *Body Size: The Structure and Function of Aquatic Ecosystems* (eds. Hildrew, A. G., Raffaelli, D. G. & Edmonds-Brown, R.) 186–209 (Cambridge Univ. Press, 2007).

7. Macneale, K. H., Peckarsky, B. L. & Likens, G. E. Stable isotopes identify dispersal patterns of stonefly populations living along stream corridors. *Freshw. Biol.* **50**, 1117–1130 (2005).
8. Troast, D., Suhling, F., Jinguji, H., Sahlén, G. & Ware, J. A global population genetic study of *Pantala flavescens*. *PLoS One* **11**, e0148949 (2016).
9. French, S. K. & McCauley, S. J. The movement responses of three libellulid dragonfly species to open and closed landscape cover. *Insect Conserv. Divers.* **12**, 437–447 (2019).
10. Arribas, P. *et al.* Dispersal ability rather than ecological tolerance drives differences in range size between lentic and lotic water beetles (Coleoptera: Hydrophilidae). *J. Biogeogr.* **39**, 984–994 (2012).
11. Lancaster, J. & Downes, B. J. Dispersal traits may reflect dispersal distances, but dispersers may not connect populations demographically. *Oecologia* **184**, 171–182 (2017).
12. Lancaster, J. & Downes, B. J. *Aquatic Entomology* (Oxford Univ. Press, 2013).
13. Stevens, V. M. *et al.* Dispersal syndromes and the use of life-histories to predict dispersal. *Evol. Appl.* **6**, 630–642 (2013).
14. Outomuro, D. & Johansson, F. Wing morphology and migration status, but not body size, habitat or Rapoport's rule predict range size in North-American dragonflies (Odonata: Libellulidae). *Ecography* **42**, 309–320 (2019).
15. Tonkin, J. D. *et al.* The role of dispersal in river network metacommunities: patterns, processes, and pathways. *Freshw. Biol.* **63**, 141–163 (2018).
16. Brown, B. L. & Swan, C. M. Dendritic network structure constrains metacommunity properties in riverine ecosystems. *J. Anim. Ecol.* **79**, 571–580 (2010).
17. Wikelski, M. *et al.* Simple rules guide dragonfly migration. *Biol. Lett.* **2**, 325–329 (2006).
18. Schmidt-Kloiber, A. & Hering, D. An online tool that unifies, standardises and codifies more than 20,000 European freshwater organisms and their ecological preferences. *Ecol. Indic.* **53**, 271–282, www.freshwaterecology.info (2015).
19. Serra, S. R. Q., Cobo, F., Graça, M. A. S., Dolédec, S. & Feio, M. J. Synthesising the trait information of European Chironomidae (Insecta: Diptera): towards a new database. *Ecol. Indic.* **61**, 282–292 (2016).
20. Tachet, H., Richoux, P., Bournaud, M. & Usseglio-Polatera, P. *Invertébrés d'Eau Douce: Systématique, Biologie, Écologie* (CNRS Éditions, 2010).
21. Vieira, N. K. M. *et al.* *A Database of Lotic Invertebrate Traits for North America* (U.S. Geological Survey Data Series 187, 2006).
22. Chevenet, F., Dolédec, S. & Chessel, D. A fuzzy coding approach for the analysis of long-term ecological data. *Freshw. Biol.* **31**, 295–309 (1994).
23. Schmera, D., Podani, J., Heino, J., Erös, T. & Poff, N. L. R. A proposed unified terminology of species traits in stream ecology. *Freshw. Sci.* **34**, 823–830 (2015).
24. Lancaster, J., Downes, B. J. & Arnold, A. Lasting effects of maternal behaviour on the distribution of a dispersive stream insect. *J. Anim. Ecol.* **80**, 1061–1069 (2011).
25. Jenkins, D. G. *et al.* Does size matter for dispersal distance? *Glob. Ecol. Biogeogr.* **16**, 415–425 (2007).
26. Harrison, R. G. Dispersal polymorphisms in insects. *Annu. Rev. Ecol. Syst.* **11**, 95–118 (1980).
27. Graham, E. S., Storey, R. & Smith, B. Dispersal distances of aquatic insects: upstream crawling by benthic EPT larvae and flight of adult Trichoptera along valley floors. *New Zeal. J. Mar. Freshw. Res.* **51**, 146–164 (2017).
28. Hoffsten, P. O. Site-occupancy in relation to flight-morphology in caddisflies. *Freshw. Biol.* **49**, 810–817 (2004).
29. Bonada, N. & Dolédec, S. Does the Tachet trait database report voltinism variability of aquatic insects between Mediterranean and Scandinavian regions? *Aquat. Sci.* **80**, 1–11 (2018).
30. Sarremejane, R. *et al.* DISPERSE, a trait database to assess the dispersal potential of aquatic macroinvertebrates. *figshare* <https://doi.org/10.6084/m9.figshare.c.5000633> (2020).
31. Lévêque, C., Balian, E. V. & Martens, K. An assessment of animal species diversity in continental waters. *Hydrobiologia* **542**, 39–67 (2005).
32. Green, A. J. & Figuerola, J. Recent advances in the study of long-distance dispersal of aquatic invertebrates via birds. *Divers. Distrib.* **11**, 149–156 (2005).
33. Maasri, A. A global and unified trait database for aquatic macroinvertebrates: the missing piece in a global approach. *Front. Environ. Sci.* **7**, 1–3 (2019).
34. Cañedo-Argüelles, M. *et al.* Dispersal strength determines meta-community structure in a dendritic riverine network. *J. Biogeogr.* **42**, 778–790 (2015).
35. Datry, T. *et al.* Metacommunity patterns across three Neotropical catchments with varying environmental harshness. *Freshw. Biol.* **61**, 277–292 (2016).
36. Swan, C. M. & Brown, B. L. Metacommunity theory meets restoration: isolation may mediate how ecological communities respond to stream restoration. *Ecol. Appl.* **27**, 2209–2219 (2017).
37. Sarremejane, R., Mykrä, H., Bonada, N., Aroviita, J. & Muotka, T. Habitat connectivity and dispersal ability drive the assembly mechanisms of macroinvertebrate communities in river networks. *Freshw. Biol.* **62**, 1073–1082 (2017).
38. Jacobson, B. & Peres-Neto, P. R. Quantifying and disentangling dispersal in metacommunities: How close have we come? How far is there to go? *Landsc. Ecol.* **25**, 495–507 (2010).
39. Sarremejane, R. *et al.* Do metacommunities vary through time? Intermittent rivers as model systems. *J. Biogeogr.* **44**, 2752–2763 (2017).
40. Datry, T., Moya, N., Zubieta, J. & Oberdorff, T. Determinants of local and regional communities in intermittent and perennial headwaters of the Bolivian Amazon. *Freshw. Biol.* **61**, 1335–1349 (2016).
41. Cid, N. *et al.* A metacommunity approach to improve biological assessments in highly dynamic freshwater ecosystems. *Bioscience* **70**, 427–438 (2020).
42. Datry, T., Bonada, N. & Heino, J. Towards understanding the organisation of metacommunities in highly dynamic ecological systems. *Oikos* **125**, 149–159 (2016).
43. Hermoso, V., Cattarino, L., Kennard, M. J., Watts, M. & Linke, S. Catchment zoning for freshwater conservation: refining plans to enhance action on the ground. *J. Appl. Ecol.* **52**, 940–949 (2015).
44. Thuiller, W. *et al.* A road map for integrating eco-evolutionary processes into biodiversity models. *Ecol. Lett.* **16**, 94–105 (2013).
45. Mendes, P., Velazco, S. J. E., de Andrade, A. F. A. & De Marco, P. Dealing with overprediction in species distribution models: How adding distance constraints can improve model accuracy. *Ecol. Model.* **431**, 109180 (2020).
46. Willis, S. G. *et al.* Integrating climate change vulnerability assessments from species distribution models and trait-based approaches. *Biol. Conserv.* **190**, 167–178 (2015).
47. Cooper, J. C. & Soberón, J. Creating individual accessible area hypotheses improves stacked species distribution model performance. *Glob. Ecol. Biogeogr.* **27**, 156–165 (2018).
48. Markovic, D. *et al.* Europe's freshwater biodiversity under climate change: distribution shifts and conservation needs. *Divers. Distrib.* **20**, 1097–1107 (2014).
49. Bush, A. & Hoskins, A. J. Does dispersal capacity matter for freshwater biodiversity under climate change? *Freshw. Biol.* **62**, 382–396 (2017).
50. Bohonak, A. J. Dispersal, gene flow, and population structure. *Q. Rev. Biol.* **74**, 21–45 (1999).
51. Dijkstra, K.-D. B., Monaghan, M. T. & Pauls, S. U. Freshwater biodiversity and aquatic insect diversification. *Annu. Rev. Entomol.* **59**, 143–163 (2014).

52. Múrria, C. *et al.* Local environment rather than past climate determines community composition of mountain stream macroinvertebrates across Europe. *Mol. Ecol.* **26**, 6085–6099 (2017).
53. Statzner, B. & Bêche, L. A. Can biological invertebrate traits resolve effects of multiple stressors on running water ecosystems? *Freshw. Biol.* **55**, 80–119 (2010).
54. Strayer, D. L. & Dudgeon, D. Freshwater biodiversity conservation: recent progress and future challenges. *J. North Am. Benthol. Soc.* **29**, 344–358 (2010).
55. Reid, A. J. *et al.* Emerging threats and persistent conservation challenges for freshwater biodiversity. *Biol. Rev.* **94**, 849–873 (2019).
56. R Core Team. R: A language and environment for statistical computing. <https://www.r-project.org/> (2020).
57. Dray, S. & Dufour, A.-B. The ade4 package: Implementing the duality diagram for ecologists. *J. Stat. Softw.* **1**, 1–20 (2007).

Acknowledgements

The study was supported by the COST Action CA15113 Science and Management of Intermittent Rivers and Ephemeral Streams (<http://www.smires.eu>), funded by COST (European Cooperation in Science and Technology). NC was supported by the French research program Make Our Planet Great Again. MC-A was supported by the MECODISPER project (CTM2017-89295-P) funded by the Spanish Ministerio de Economía, Industria y Competitividad (MINECO) - Agencia Estatal de Investigación (AEI) and cofunded by the European Regional Development Fund (ERDF). AC-R acknowledges funding by MINECO-AEI-ERDF (CGL2014-53140-P). CG-C was supported by the EDRF (COMPETE2020 and PT2020) and the Portuguese Foundation for Science and Technology, through the CBMA strategic program UID/BIA/04050/2019 (POCI-01-0145-FEDER-007569) and the STREAMECO project (Biodiversity and ecosystem functioning under climate change: from the gene to the stream, PTDC/CTA-AMB/31245/2017). JH was supported by the project 'Global taxonomic, functional and phylogenetic diversity of stream macroinvertebrate communities: unravelling spatial trends, ecological determinants and anthropogenic threats' funded by the Academy of Finland. PP and MP were supported by the Czech Science Foundation (P505-20-17305S). ZC was supported by the projects EFOP-3.6.1.-16-2016-00004, 20765-3/2018/FEKUTSTRAT and TUDFO/47138/2019-ITM. We thank two anonymous reviewers for insightful feedback that improved an earlier draft of this manuscript.

Author contributions

N.B., N.C. and R.Sa. developed the idea and data collection framework. R.Sa. compiled most of the dispersal-related trait data and structured the database. All authors contributed to the addition and checking of information included in the database, and Z.C. provided direct measurements of several taxa. A.C.-R. designed Fig. 1. M.A., M.C.-A., C.G.-C. and M.F. helped to finalize the database reference list. N.C. wrote the first draft of the manuscript, and all authors contributed to its finalization. R.St. proofread the manuscript.

Competing interests

The authors declare no competing interests.

Additional information

Supplementary information is available for this paper at <https://doi.org/10.1038/s41597-020-00732-7>.

Correspondence and requests for materials should be addressed to R.S.

Reprints and permissions information is available at www.nature.com/reprints.

Publisher's note Springer Nature remains neutral with regard to jurisdictional claims in published maps and institutional affiliations.



Open Access This article is licensed under a Creative Commons Attribution 4.0 International License, which permits use, sharing, adaptation, distribution and reproduction in any medium or format, as long as you give appropriate credit to the original author(s) and the source, provide a link to the Creative Commons license, and indicate if changes were made. The images or other third party material in this article are included in the article's Creative Commons license, unless indicated otherwise in a credit line to the material. If material is not included in the article's Creative Commons license and your intended use is not permitted by statutory regulation or exceeds the permitted use, you will need to obtain permission directly from the copyright holder. To view a copy of this license, visit <http://creativecommons.org/licenses/by/4.0/>.

The Creative Commons Public Domain Dedication waiver <http://creativecommons.org/publicdomain/zero/1.0/> applies to the metadata files associated with this article.

© The Author(s) 2020