

Mechanical force application to the nucleus regulates nucleocytoplasmic transport

Ion Andreu^{1,2}, Ignasi Granero-Moya^{1,3*}, Nimesh R. Chahare¹, Kessem Clein⁴, Marc Molina Jordàn^{1,3}, Amy E. M. Beedle^{1,5}, Alberto Elosegui-Artola^{1,5,6,7}, Juan F. Abenza¹, Leone Rossetti¹, Xavier Trepas^{1,3,8,9}, Barak Raveh⁴, Pere Roca-Cusachs^{1,3}.*

¹Institute for Bioengineering of Catalonia (IBEC), the Barcelona Institute of Technology (BIST), 08028 Barcelona, Spain

²Universidad de Navarra, TECNUN Escuela de Ingeniería, Manuel de Lardizabal 15, 20018, Donostia-San Sebastián, Spain

³Universitat de Barcelona, 08036 Barcelona, Spain

⁴School of Computer Science and Engineering, The Hebrew University of Jerusalem, 9190416, Jerusalem, Israel

⁵Department of Physics, King's College London, London, WC2R 2LS, UK

⁶Harvard John A. Paulson School of Engineering and Applied Sciences, Harvard University, Cambridge, MA, 02138, USA

⁷Cell and Tissue Mechanobiology Laboratory, The Francis Crick Institute, London, NW1 1AT UK

⁸Institució Catalana de Recerca i Estudis Avançats (ICREA), Passeig de Lluís Companys, 23, 08010 Barcelona

⁹Centro de Investigación Biomédica en Red en Bioingeniería, Biomateriales y Nanomedicina (CIBER-BBN), 08028 Barcelona, Spain

* Both authors contributed equally to this work

Correspondence to Ion Andreu (iandreu@ibecbarcelona.eu) or Pere Roca-Cusachs (proca@ibecbarcelona.eu)

Abstract

Mechanical force controls fundamental cellular processes in health and disease, and increasing evidence shows that the nucleus both experiences and senses applied forces. Such forces can lead to the nuclear translocation of proteins, but whether force controls nucleocytoplasmic transport, and how, remains unknown. Here we show that nuclear forces differentially control passive and facilitated nucleocytoplasmic transport, setting the rules for the mechanosensitivity of shuttling proteins. We demonstrate that nuclear force increases permeability across nuclear pore complexes, with a dependence on molecular weight that is stronger for passive than facilitated diffusion. Due to this differential effect, force leads to the translocation into or out of the nucleus of cargoes within a given range of molecular weight and affinity for nuclear transport receptors. Further, we show that the mechanosensitivity of several transcriptional regulators can be both explained by this mechanism, and engineered exogenously by introducing appropriate nuclear localization signals. Our work unveils a mechanism of mechanically induced signalling, likely operating in parallel to others, with potential applicability across signalling pathways.

MAIN TEXT

Introduction

Cells sense and respond to mechanical stimuli from their environment by a process known as mechanosensing, which drives important processes in health and disease¹⁻³. Growing evidence shows that the cell nucleus is directly submitted to force⁴⁻⁶, and can act as a mechanosensor⁷. Force applied to the nucleus (henceforth termed nuclear force for simplicity) can affect chromatin architecture⁸, the accessibility of the transcription machinery⁹, the conformation of nucleoskeletal proteins such as lamins¹⁰, or cell contractility^{11,12}. Further, forces transmitted to cells, and specifically nuclei, affect the nucleocytoplasmic localization of transcriptional regulators involved in different signalling pathways¹³. As proposed for MRTF-A^{14,15}, β -catenin^{16,17}, or YAP¹⁸⁻²⁰, this can be due to a retention mechanism, in which force controls the localization of proteins by regulating their affinity for binding partners in the nucleus or cytoplasm. Alternatively, the nuclear translocation of YAP²¹ and MyoD²² has been associated to a force-induced increase in passive diffusion across nuclear pore complexes (NPCs). From this evidence, it is tempting to hypothesize that nucleocytoplasmic transport could be mechanosensitive *per se*, independently of any specific signalling pathway. This would enable a general mechanism by which nuclear force could control the nuclear localization of proteins, and thereby transcription. However, mere changes in passive diffusion can provide neither directionality nor molecular specificity, so whether there is such a mechanism, and how it operates, remains unknown.

Nucleocytoplasmic transport takes place through NPCs in two main ways, passive and facilitated diffusion^{23,24}. Passive diffusion is rapid for small proteins, but is progressively impaired as the molecular weight (MW) of the protein increases²⁵⁻²⁷. This impairment is caused by a meshwork of disordered proteins within NPCs called phenylalanine-glycine (FG) Nups, commonly termed the NPC permeability barrier²⁸. Facilitated diffusion of larger proteins is mediated by nuclear transport receptors (NTRs)^{29,30}, which interact specifically with both the cargo molecules and FG Nups to overcome the NPC permeability barrier. They are divided between importins (mediating active nuclear import) and exportins (mediating active nuclear export)³¹. Both classes interact with cargoes by binding to specific sequences³² termed nuclear localisation signals (NLS) or nuclear export signals (NES) for proteins binding to importins or exportins, respectively^{33,34}. The directionality of facilitated transport in either the import or export direction is enabled by the coupling of binding/unbinding events to the phosphorylation status of the small GTPase Ran (either GTP, predominant in the nucleus, or GDP, predominant in the cytoplasm)³⁰. For example, in the canonical import, a complex is formed between importin β (which interacts with FG Nups), importin α (which binds importin β), and the cargo (which binds importin α through an NLS). The complex then diffuses through the NPC and finally dissociates in the nucleus in a RanGTP-dependent manner^{31,32}.

Results

Nucleocytoplasmic transport is mechanosensitive.

To assess if and how mechanical force affects nucleocytoplasmic transport, we studied different artificial constructs undergoing both passive and facilitated diffusion, transfected in mouse embryonic fibroblasts (MEFs). First, we used a light-inducible nuclear export construct (LEXY)³⁵ (Fig. 1a). The construct presents a mild NLS fused to mCherry, plus a stronger NES that is only functional upon light excitation. To control the mechanical environment, cells were seeded on soft or stiff fibronectin-coated polyacrylamide gels (Young's modulus of 1.5 and 30 kPa, respectively). Increasing substrate stiffness leads to the growth of focal adhesions, increasing the transmission of actomyosin-generated forces between cells and the substrate^{36,37}. In turn, these forces reach and deform the nucleus through the Linker of Nucleus and Cytoskeleton (LINC) complex^{21,38}, which connects actin fibres to the nuclear lamina. Before photoactivation ($t=0$), with only the NLS active, the nuclear to cytoplasmic ratio (N/C ratio) was higher for cells on stiff substrates (Fig. 1b,c). Upon excitation by light, the construct exited the nucleus to similar final N/C ratios in both conditions, although the rate of N/C change was higher for the stiff substrate (Fig. 1b-d). Once light excitation stopped, the reverse process occurred, with N/C ratios increasing faster for the stiff substrate, until restoring original values (Fig. 1e). We then co-transfected cells with DN-KASH, a dominant-negative domain of nesprin that disrupts the LINC complex⁴ and prevents force transmission to the nucleus⁶. DN-KASH overexpression led cells on stiff substrates to behave like those on soft substrates (Fig. 1b-e), demonstrating that the effect of stiffness was mediated by nuclear force.

Passive diffusion is mechanosensitive for small MWs.

Our results strongly suggest that nucleocytoplasmic transport is generally affected by nuclear force, but do not clarify the contributions of passive and facilitated diffusion (the ~45 kDa LEXY construct is likely sufficiently small to diffuse passively). To dissect the different contributions, we first used constructs undergoing only passive diffusion, and regulated their diffusivity through their MW. These constructs were composed of a Green Fluorescent Protein (GFP), attached through a short linker to between zero and six repeats of the 7 kDa bacterial Protein A (PrA) (Fig. 2a). PrA is inert and purely diffusive in eukaryotic cells, as shown previously²⁶ and also confirmed by the complete fluorescence recovery of the constructs after photobleaching (Extended Data Fig. 1e). When we transfected the constructs in cells, the N/C ratios of all proteins were ≈ 1 regardless of MW and substrate stiffness (Fig. 2 b,c).

This result shows that concentrations of passively diffusing proteins were not mechanosensitive (where mechanosensitivity is defined as the fold change in a given magnitude in stiff versus soft substrates). However, this does not provide information on diffusion kinetics. To quantify this, we adapted a previously described method and

model²⁰ based on Fluorescence Loss in Photobleaching (FLIP, Fig. 2d), which allowed us to measure nuclear influx and efflux rates (see methods and Extended Data Fig. 1). These rates quantify overall transport into and out of the nucleus, regardless of whether it is passive or mediated by active import/export. As expected, both influx and efflux rates decreased with MW (Fig. 2e,f). Interestingly, rates increased with substrate stiffness, and this effect decreased for increasing MW (Fig. 2e,f). Confirming that this was mediated by nuclear force, DN-KASH overexpression had the same effect as reducing substrate stiffness (Extended Data Fig. 2). Thus, nuclear force weakens the permeability barrier of NPCs (i.e., increases diffusion), and the effect is more pronounced for molecules with low MW (high diffusivity). Nevertheless, and because diffusion is non-directional, this does not affect the steady state nucleocytoplasmic distribution of molecules, which remains uniform.

Mechanosensitivity of facilitated vs passive diffusion.

Next, we assessed how substrate stiffness affected facilitated transport. We first assessed the protein directly interacting with FG Nups, importin β . As expected, transfected importin β -GFP localized at the nuclear membrane (Fig. 3a). Due to this localization and the diffraction limit, our FLIP measurements could not capture the likely very fast kinetics taking place in the immediate vicinity of the nuclear membrane. However, we did measure the kinetics of importin β molecules released in the bulk of either the nucleus or cytoplasm. Influx and efflux rates of importin β showed a high mechanosensitivity (Fig. 3b,c), similarly to that of highly diffusive passive molecules (Fig. 2e,f). Because importin β exhibits facilitated diffusion both in the influx and efflux direction, influx and efflux rates were largely symmetrical, leading to uniform concentrations inside and outside the nucleus regardless of substrate stiffness (Fig. 3d).

Then, we studied cargo proteins undergoing facilitated diffusion by adding NLS sequences to the GFP-PrA constructs (Fig. 3e). To regulate facilitated diffusion, we used NLS sequences with point mutations resulting in varying levels of affinity for importin α^{39} . We termed them H_NLS, M_NLS, and L_NLS, for high, medium, and low affinity, respectively (see Supplementary Table 2). The mechanosensitivity of such constructs can be predicted from the behaviour of passively diffusing molecules (Fig. 2e,f) and importin β (Fig. 3b,c). Indeed, a cargo molecule with an NLS should have a high mechanosensitivity in the influx direction (because it enters the nucleus with importin β), but a low mechanosensitivity in the efflux direction if its MW is above ~ 40 kDa (because it exits the nucleus through passive diffusion, which loses mechanosensitivity as MW increases).

By taking L_NLS-EGFP-2PrA (41 kDa) as a starting point, we confirmed this prediction: this molecule had a higher mechanosensitivity in influx than efflux rates, leading to an increase in N/C ratios with stiffness (Fig. 3f-i). We then carried out several controls to confirm that this was caused by nuclear force. First, we checked that the same effects

on rates were observed when comparing cells with and without DN-KASH overexpression (Extended Data Fig. 2). Second, we assessed stiffness-mediated changes in importin concentrations. Concentrations of importin β did not change with stiffness, but the two types of importin α binding to our NLS constructs (importin $\alpha 3$ and importin $\alpha 1$) respectively showed a $\sim 50\%$ increase or $\sim 40\%$ decrease with stiffness (Extended Data Fig. 3a-e). The N/C ratios of all importins remained close to 1 in all cases, with only a ~ 10 - 30% increase with stiffness that if anything should impair, rather than promote, nuclear import of cargo (Extended Data Fig. 3). Thus, changes in importin concentration may have an impact, but do not exhibit any consistent trend that could explain our results. Finally, we applied force to the nucleus of cells seeded on soft gels with an Atomic Force Microscope (AFM), and verified that this also led to an increase in N/C ratios only if the construct contained the L_NLS sequence (Fig. 3j-l). Applying force to cells co-transfected with L_NLS-EGFP-2PrA and purely diffusive BFP also led to a nuclear enrichment of GFP versus BFP (Extended Data Fig. 3). Response to AFM-applied force was also lost for cells overexpressing DN-KASH, showing that the effects of force require an intact LINC complex (Extended Data Fig. 3).

For L_NLS-EGFP-2PrA, nuclear accumulation with force is explained by a higher mechanosensitivity of facilitated versus passive diffusion. This differential behaviour may arise from the role of MW. Indeed, passive diffusion is strongly impaired as MW increases²⁶ whereas facilitated diffusion can transport large molecules⁴⁰⁻⁴². Thus, one could expect a scheme (summarized in Fig. 3m) in which passive diffusion decreases both in magnitude and in mechanosensitivity as MW increases (as measured in Fig. 2e,f) whereas facilitated transport is not affected (or only mildly affected) by MW. To verify this hypothesis, we measured influx and efflux rates of constructs containing the L_NLS sequence and different MW (Fig. 3n,o). Indeed, influx rates (dominated by active transport, Fig. 3m) had a much milder dependence on MW than efflux rates (dominated by diffusion and with very similar behaviour to that of purely diffusive constructs, Fig. 3o).

Molecular properties defining mechanosensitivity.

With these elements, we can generate an initial conceptual model of how nucleocytoplasmic transport should broadly depend on force, MW, and NLS affinity (see Supplementary Note). To this end, we assume that N/C ratios are given by the ratio of influx and efflux rates, where efflux rates are purely passive and influx rates have additive contributions of both passive and facilitated diffusion. Then, we assume as experimentally verified that **i)** passive influx and efflux rates (which are equal) decrease as MW increases, **ii)** passive influx and efflux rates increase when nuclear force is applied, but this effect disappears as MW increases, **iii)** facilitated influx rates increase with nuclear force and with NLS sequence affinity, but do not depend on MW. We also assume that there is a limit to the efficiency of active facilitated transport, and therefore **iv)** N/C ratios saturate and cannot increase above a given level. In such a saturation

regime, changes in influx and efflux rates can no longer behave differently and should be matched. The potential origin of this is discussed in the more detailed, kinetic model introduced later in the manuscript. With these assumptions, we can plot two simple diagrams showing how N/C ratios should depend on MW and NLS affinity before applying force to the nucleus (Fig. 4a), and their fold change with force, i.e., their mechanosensitivity (Fig. 4b). According to this framework, for low MW or a weak NLS, passive diffusion dominates over facilitated import, leading to N/C ratios close to 1 independently of nuclear force. For high MW or a strong NLS, facilitated import dominates over diffusion, leading to high, saturated N/C ratios, also independently of nuclear force. However, when passive and facilitated rates are comparable they depend differently on force, leading to mechanosensitive N/C ratios. As MW decreases (and passive diffusion increases) a progressively higher facilitated influx is required to match passive diffusion, and thus the “mechanosensitive zone” is placed along a diagonal in Fig. 4b.

We then verified the different predictions of the conceptual model by using the different constructs. First, for proteins with a fixed NLS sequence (L_NLS), N/C ratios increased with MW monotonically, but mechanosensitivity peaked at an intermediate MW between the high passive diffusion regime (low MW) and the saturated regime (high MW) (Fig. 4c,f,i). Of note, increasing N/C ratios also led to increased variability in measurements, due to the increased noise caused by the low cytoplasmic signal (Extended Data Fig. 4). Second, increasing MW in proteins with a fixed NLS sequence of higher affinity (M_NLS) moved the point of maximum mechanosensitivity to a lower MW (Fig. 4d,g,j). Finally, increasing NLS affinity in proteins with a fixed MW (41 kDa) also increased N/C ratios monotonically, but affected mechanosensitivity in a biphasic manner (Fig. 4e,h,k). For this last set of constructs, we also used the highly nuclear and not mechanosensitive H_NLS construct to verify that force application with AFM did not lead to the same response as in mechanosensitive constructs (Extended Data Fig. 3).

Our conceptual model thus provides a useful framework to interpret our results, but it does not consider important elements of nucleocytoplasmic transport, such as the Ran cycle, or the fact that facilitated transport is reversible and can operate in both directions⁴³. To address this, we developed a more elaborate kinetic mathematical model, which follows a canonical description of importin-mediated nucleocytoplasmic transport. This includes docking, undocking, and bidirectional translocation of importins in different intermediate forms, competitive binding of cargo and RanGTP to importins, the Ran cycle, and passive diffusion of unbound cargo molecules (see Supplementary Note)^{31,44–46}. To model the effect of force on passive diffusion, we used the experimentally measured passive diffusion rates as a function of force and MW from fig. 1e,f. For facilitated diffusion, we simply assumed that force reduces the mean time required for importin-cargo complexes to cross NPCs (in a MW-independent way), without changing any other parameter.

The kinetic model correctly predicted the increase of N/C ratios, and of their mechanosensitivity, with MW and NLS affinity (Fig. 4l-o). Interestingly, as NLS affinities increase, the model predicted an increase not only in influx rates but to a lesser degree also efflux rates, something which we confirmed experimentally (Extended Data Fig. 5). This occurs because as NLS affinity increases, cargo molecules can compete with Ran-GTP for binding importins, limiting the ability of Ran-GTP to disassemble the cargo-importin complex. This leads to the facilitated diffusion of importin-cargo complexes out of (and not only into) the nucleus. Eventually and for very high NLS affinities, the model predicted that N/C ratios would first saturate and then collapse, as cargo becomes so tightly bound to importins that it diffuses with it out of the nucleus regardless of Ran-GTP (Extended Data Fig. 5). This was not observed in experiments, and likely corresponds to non-physiological high affinities. The only experimental feature that the kinetic model did not capture was the fact that high MWs or NLS affinities decreased mechanosensitivity (Fig. 4i-k). Instead, the model predicted that mechanosensitivity should be maintained even in this regime (Fig. 4m,o). Potentially, this could be because the model underestimated the effect of NLS affinity on efflux rates (Extended Data Fig. 5). If efflux rates are mediated by facilitated rather than passive diffusion, then their dependency on force is the same as that of influx rates, and the overall effect on N/C ratios cancels out.

Mechanosensitivity of facilitated export.

Given the observed mechanosensitivity of active nuclear import, one might expect a similar (but reversed) behaviour for active export. To test this, we developed constructs by combining PrA repeats with different NES signals of different strength⁴⁷ (see Supplementary Table 2). N/C ratios changed as expected with MW and NES strength (by following the opposite trends than NLS constructs, Fig. 5a-i). The mechanosensitivity of the constructs also behaved in the opposite way, with constructs leaving (rather than entering) the nucleus with force (Fig. 5g-i). Consistently, influx and efflux rates of NES constructs also had opposite trends with MW than NLS constructs: efflux rates were largely independent of MW, whereas influx rates showed a strong dependence, mimicking diffusive constructs (Extended Data Fig. 5a,b). Confirming the effect of force, applying force to the nucleus with AFM to the most mechanosensitive NES construct (H_NES-EGFP-2PrA 41 KDa) led to a reduction of N/C ratios (Fig. 5j-l). Interestingly, mechanosensitivity of the NES constructs was systematically milder than that of the NLS constructs. This is consistent with the behaviour of the light inducible construct (Fig. 1b), which had a stiffness-dependent localization when controlled by active import (no light excitation) but not when controlled by active export (under light excitation). This lower mechanosensitivity of active export as compared to import may be related to the many differences between the transport cycles in both directions, and particularly the fact that NES-mediated export, unlike NLS-mediated import, is directly coupled to the hydrolysis of Ran-GTP^{31,44,48}. However, another potential intuitive explanation could be that a

concentration gradient is more easily generated by accumulating proteins in a small compartment (the nucleus) than a large one (the cytoplasm). In line with this hypothesis, model predictions obtained by inverting nuclear and cytoplasmic volumes led to lower N/C ratios and mechanosensitivity (Extended Data Fig. 6).

Mechanosensitivity of transcriptional regulators.

Finally, we evaluated whether nucleocytoplasmic transport can explain the reported mechanosensitivity of different transcriptional regulators. Different transcriptional regulators localize to the nucleus with force in different contexts, including YAP^{6,49}, twist1⁵⁰, snail⁵¹, SMAD3⁵², GATA2⁵³, and NFκβ⁵⁴. If their mechanosensitivity is explained by regulation of nucleocytoplasmic transport with nuclear force, then it should be abolished by preventing either force transmission to the nucleus (by overexpressing DN-KASH) or nucleocytoplasmic transport (by overexpressing either DN-Ran, a dominant-negative version of Ran⁵⁵, or by treatment with importazole, a drug which blocks active import by importin β⁵⁶). For the case of YAP, we previously showed that its mechanosensitivity is abrogated by both factors⁶. Regarding the rest, GATA2 and NFκβ exhibited a very low mechanosensitivity in our system (Extended Data Fig. 7), but SMAD3, Snail, and Twist1 showed a clear response (Extended Data Fig. 7 and Fig. 6a,b). In all cases, mechanosensitivity was abrogated by DN-KASH, DN-Ran, or importazole (Extended Data Fig. 7 and Fig. 6a,b). Interestingly and consistent with our finding that NLS constructs were more mechanosensitive than NES constructs, SMAD3 mechanosensitivity was higher for cells treated with TGFβ (which induces SMAD3 nuclear import) than with lapatinib (which induces SMAD3 nuclear export)⁵⁷.

Thus, the mechanosensitivity of several transcriptional regulators is controlled by force-induced effects in nucleocytoplasmic transport. Our proposed mechanism also has the stronger implication that mechanosensitivity can be engineered simply by selecting the appropriate levels of affinity to importins. To verify this, we took twist1 as a convenient model, since its NLS sequences are known, and their function can be abolished with point mutations⁵⁸. Further, its mechanosensitivity depends on its binding to G3BP2, which retains twist1 in the cytoplasm⁵⁰. We first overexpressed wild-type twist1 in cells, which retained the mechanosensitivity of endogenous twist1 (Fig. 6c-f). Of note, changes in twist1 caused by either stiffness or overexpression did not consistently increase the expression of twist1 target genes (Extended Data Fig. 7). Thus, twist1 serves as a model for protein localization but not transcription. Then, we overexpressed a G3BP2 binding deficient mutant, mutG3BP2. As expected, this led to high N/C ratios on both soft and stiff substrates, thereby losing mechanosensitivity. Confirming the role of nucleocytoplasmic transport, the NLS dead mutant (mutNLS, still under the control of G3BP2), lost the nuclear localization in both soft and stiff substrates, thereby also losing mechanosensitivity (although not completely, Fig. 6c-f). We then assessed whether we could restore twist1 mechanosensitivity by rescuing twist mutNLS not with its endogenous NLS, but by exogenously adding our different characterized NLS sequences

(plus an additional ultra-low affinity sequence, UL_NLS). Adding NLS sequences of different strength mimicked the effects seen in Fig. 4: as the NLS strength increased, nuclear localization progressively increased, and mechanosensitivity was highest at a low strength (L_NLS), where it was almost as high as in the endogenous case. Thus, simply substituting the endogenous twist1 NLS with an exogenous one of the appropriate strength, not regulated by any twist-1 related signalling mechanism, recapitulates its mechanosensitivity.

Discussion

Our work shows that force regulates nucleocytoplasmic transport by weakening the permeability barrier of NPCs, affecting both passive and facilitated diffusion. Because MW affects more passive than facilitated diffusion, this generates a differential effect on both types of transport that enables force-induced nuclear (or cytosolic) localization of cargo. The mechanical weakening of the permeability barrier is most likely the consequence of NPC deformation, and we previously reported increased apparent NPC diameters for cells on stiff versus soft substrates⁶. Further, recent structural evidence has confirmed the deformability of NPCs. In NPCs, the meshwork of FG Nup proteins that conforms the permeability barrier is supported by the NPC inner ring, which is formed by 8 symmetric spokes^{59,60}. Spokes have limited interactions with each other through flexible linker proteins⁶¹. This allows NPCs to dilate or constrict by changing the distance between spokes, as proposed a decade ago⁶² and as verified very recently^{63,64}. Such dilation and constriction indeed occur in response to energy depletion or to changes in osmotic pressure, likely in response to changes in nuclear membrane tension⁶³. This proposed direct regulation of NPC permeability with force is strongly supported by the immediate response observed in AFM experiments, the effects observed in passive diffusion, and the dependency on MW. On top of this mechanism, indirect effects mediated for instance by changes in importin α levels (Extended Data fig. 3) or by competition between cargoes for importin binding (as recently demonstrated between YAP and importin 7⁶⁵) may play a role in different contexts.

Three important open questions emerge from our findings. First, how mechanical deformation of NPCs weakens the permeability barrier of FG Nups in both passive and facilitated diffusion, remains to be understood. The LINC complex may play an important role, as suggested by the fact that responses to stiffness (in which cells apply force to the nucleus through the cytoskeleton and the LINC complex) are larger than responses to more unspecific force application with an AFM. This is further supported by the abrogation of AFM responses upon DN-KASH overexpression. Second, the exact set of properties that confer mechanosensitivity to transcriptional regulators or other proteins remains to be fully explored. The different transcriptional regulators discussed here range in size from over 20 kDa (for twist) to over 60 kDa (for YAP), thereby encompassing almost the full range of weights analyzed with our designed constructs. However, diffusivity through NPCs depends not only on MW but also on surface charges⁶⁶ and

protein mechanical properties⁶⁷, which could play major roles. Finally, why facilitated export is less affected than facilitated import may be related to the different volumes of nucleus and cytoplasm (as suggested by modelling in Extended Data Fig. 6), to the different interactions between importins and exportins with FG-nups⁶⁸ or to the asymmetric manner in which NPCs deform⁶⁹.

Our work demonstrates a general mechanism of mechanosensitivity, with incorporated specificity through molecular properties such as the NLS sequence and MW. Although other mechanisms (such as differential binding to nuclear or cytosolic proteins) can generate mechanosensitive nuclear translocation^{70,71}, our mechanism is consistent with the behaviour of several transcriptional regulators, and has potential general applicability. Our findings suggest that interfering with nucleocytoplasmic transport may be an avenue to regulate or abrogate mechanically-induced transcription in several pathological conditions. Perhaps even more excitingly, they open the door to design artificial mechanosensitive transcription factors, to enable mechanical control of transcriptional programs at will.

Acknowledgements

We thank S. Usieto for technical support, and G Ceada, S. Conti, M. González, S. Garcia-Manyes, M. Rout and the members of the Roca-Cusachs and Trepal lab for useful feedback and discussions. We acknowledge funding from the Spanish Ministry of Science and Innovation (PGC2018-099645-B-I00 to X.T., BFU2016-79916-P and PID2019-110298GB-I00 to P. R.-C.), the European Commission (H2020-FETPROACT-01-2016-731957 to X.T. and P.R.-C.), the European Research Council (Adv-883739 to X.T.), the Generalitat de Catalunya (2017-SGR-1602 to X.T. and P.R.-C.), The prize “ICREA Academia” for excellence in research to P.R.-C., Fundació la Marató de TV3 (201936-30-31 to P.R.-C.), and “la Caixa” Foundation (grant LCF/PR/HR20/52400004 to X.T. and P.R.-C. and fellowships LCF/BQ/DR19/11740009 to I.G.-M. and LCF/BQ/DR19/11740009 to M.M.J.). A.E.M.B. is recipient of a Sir Henry Wellcome fellowship (210887/Z/18/Z). IBEC is a recipient of a Severo Ochoa Award of Excellence from MINCIN.

Author contributions

I.A. and P.R.-C. conceived the study; I.A. and P.R.-C. designed the experiments; I.A., I.G.-M., M.M.J., A.E.M.B., A.E.-A. performed the experiments; I.A., I.G.-M., N.R.C., J.F.A., L.R, X.T., B.R. and P.R.-C. analyzed the experiments; I.G.-M. designed and cloned all constructs, N.R.C. implemented the FLIP analysis software, K.C. and B.R. implemented the kinetic model of transport, and I.A., I.G.-M., and P.R.-C. wrote the manuscript. All authors commented on the manuscript and contributed to it.

Competing interests: Authors declare they have no competing interests.

Figures:

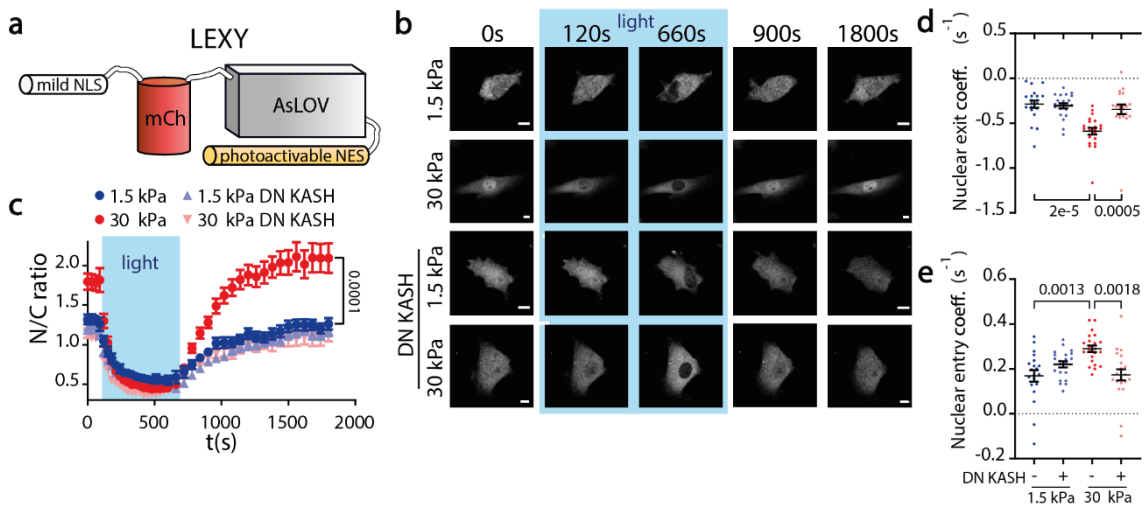


Figure 1. Nucleocytoplasmic transport is mechanosensitive. **a)** Cartoon of light-activated nucleocytoplasmic shuttling construct. Mild NLS is always active, NES is activated only upon light excitation. **b)** Time sequences of construct fluorescence before, during, and after excitation for cells seeded on 1.5/30 kPa substrates, with or without DN KASH overexpression. Scale bars, 20 μm . **c-e)** Corresponding quantifications of N/C ratios, and coefficients of exit and subsequent re-entry of constructs into the nucleus (in units of s^{-1} , obtained by fitting an exponential to the curves, see methods). (N=20, 22, 21, 21 cells per condition (1.5 kPa, 30 kPa, 1.5 kPa DN KASH, and 30 kPa DN KASH, respectively) from 3 independent experiments, data are presented as mean values \pm SEM. In c) the bar indicates the statistical significance between the last timepoint of 1.5kPa and 30kPa values. In d-e, p-values calculated with 2-way ANOVA Šídák's multiple comparisons test. Source numerical data are available in source data.

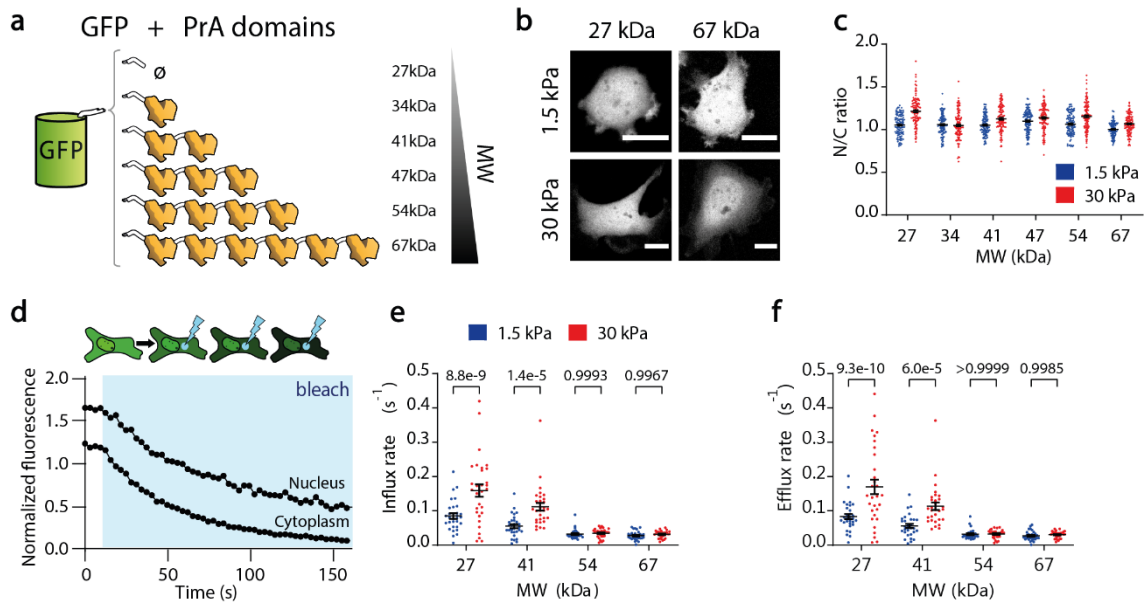


Figure 2. Passive diffusion through NPCs is mechanosensitive for small MWs. **a)** Cartoon of constructs with EGFP and different amount of repeats of PrA domains. **b)** Images showing fluorescence of indicated constructs on 1.5/30 kPa substrates. **c)** N/C ratios of constructs on 1.5/30 kPa substrates as a function of MW. N=120 cells from 3 independent experiments. Significant effects of stiffness and MW were observed ($p < 1e-15$ and $p < 1e-15$; computed via 2-way ANOVA). **d)** Example of a FLIP experiment: a laser photobleaches a region of the cell cytoplasm, and fluorescence intensities are recorded over time in nucleus and cytoplasm. Resulting curves are fitted to a kinetic model to obtain influx and efflux rates (see methods). **e,f)** Influx and efflux rates on 1.5 and 30 kPa substrates as a function of MW of the constructs. N=30 cells from 3 independent experiments. The effects of both substrate stiffness and MW were significant in both e,f). p-values e) $2.9e-8$, $<1e-15$, f) $4.0e-8$, $<1e-15$, computed via 2-way ANOVA. Scale bars, 20 μm . Data are mean \pm SEM. Source numerical data are available in source data.

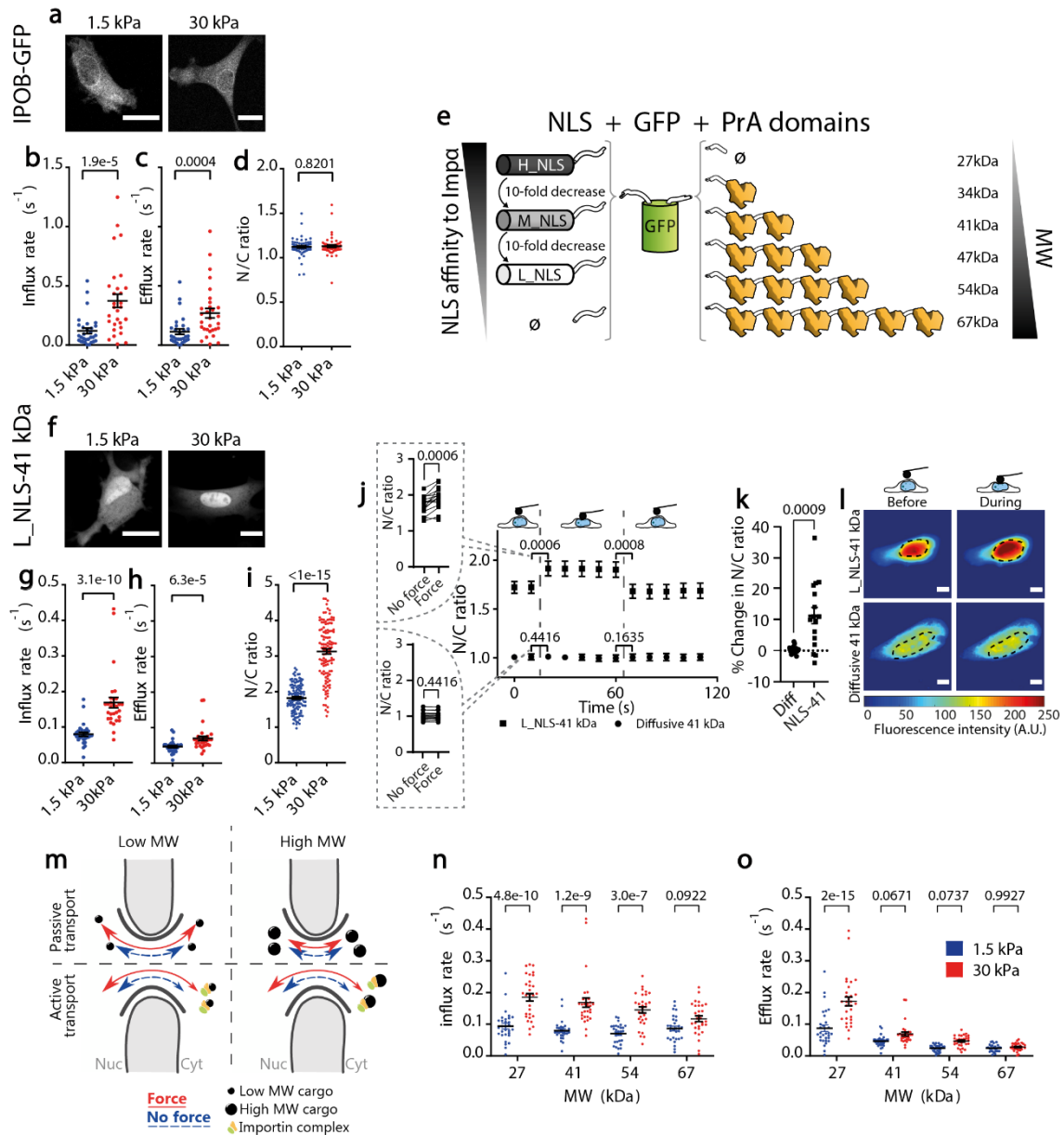


Figure 3. Differential mechanosensitivity of facilitated import versus passive diffusion explains force-induced nuclear translocation. **a)** Example importin β -GFP images for cells on 1.5/30 kPa substrates. **b-d)** Corresponding importin β -GFP influx rates (b), efflux rates (c), and resulting N/C ratios (d). N=30, 30, and 60 cells from 3 independent experiments. p-values calculated with two-tailed Mann-Whitney test. **e)** Cartoon of constructs with EGFP, different number of repeats of PrA domains, and NLS of different affinities to importin α . **f)** Example images of L_NLS-41 kDa construct for cells on 1.5 and 30 kPa substrates. **g-i)** Corresponding Influx rates (g), efflux rates (h), and resulting N/C ratios (i) of L_NLS-41 kDa construct. N=30, N=30, N=120 cells from 3 independent experiments respectively each. p-values calculated with two-tailed Mann-Whitney test. **j)** N/C ratios of L_NLS-41 kDa or diffusive 41 kDa constructs in cells seeded on 1.5 kPa gels before, during, and after nuclear deformation with AFM. Graphs on the left show paired dot plots of the time points right before and after force application. p-values were calculated with two-tailed paired t-test. **k)** Corresponding % change in N/C ratios right after force application for both constructs. p-value was calculated with a two-tailed unpaired t-test with Welch's correction. In j,k, N= 16 cells from 3 independent experiments, traces of all cells are shown in Extended Data Fig. 8. **l)** Corresponding images of constructs before and during force application, dotted line marks nucleus outline. Scale bars 20 μ m. **m)** Cartoon summarizing the effects of nuclear force and MW on active and passive transport. Passive transport decreases with MW, and depends on force only for low MW molecules. Active transport does not depend on MW, and depends on force regardless of MW. Note that

active transport arrows also show a small arrow in the export direction, as discussed in the text. **n)** Influx rates (mediated by facilitated transport) of L_NLS constructs with different molecular weights. The effect of substrate stiffness and MW tested $p < 1e-15$ and $p = 0.0004$. **o)** Efflux rates of L_NLS constructs (mediated by passive transport) with different molecular weights. The effect of substrate stiffness and MW tested $p = 3,5e-11$ and $p < 1e-15$. In n), o), $N = 30$ cells from 3 independent experiments. Two-way ANOVA, Šídák's multiple comparisons test was used to obtain p-values between conditions. Data are mean \pm SEM in all panels. Source numerical data are available in source data.

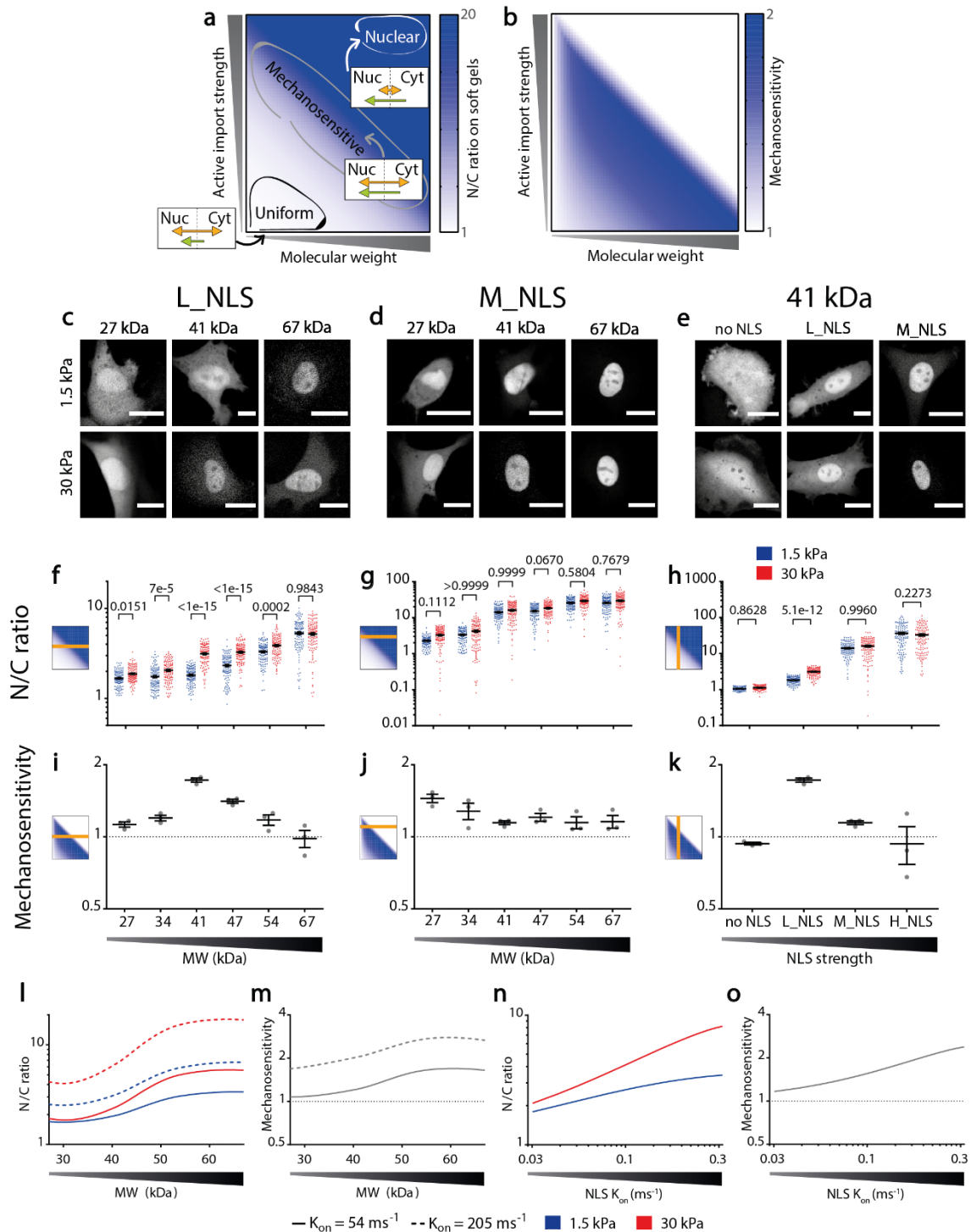


Figure 4. Balance between affinity to importins and MW defines the mechanosensitivity of nuclear localization. **a,b** Qualitative prediction from conceptual model of how MW and affinity to importins should affect N/C ratios (a) on soft substrates and their mechanosensitivity (b) (see methods). Mechanosensitivity is defined as $(N/C)_{stiff}/(N/C)_{soft}$. **c-e** Representative examples of construct distribution in cells seeded in substrates of 1.5kPa or 30kPa, for L-NLS constructs at different MW, M-NLS constructs at different MW, and 41kDa constructs at different NLS strengths. **f-h** N/C ratios corresponding to the same conditions as C-E. **i-k** Mechanosensitivity corresponding to the same conditions as C-E. **l-m** Kinetic model predictions of N/C ratios (l) and mechanosensitivities (m) for NLS of different affinities for importin

α (modelled through the binding rates k_{on} between the NLS and importin α , with values of 54 and 205 ms^{-1}) as a function of MW. **n-o**) Model predictions of N/C ratios (n) and mechanosensitivities (o) for 41kDa constructs, as a function of increasing NLS strength. Statistics: f) N= 120 cells from 3 independent experiments. Both MW ($p < 1e-15$) and Stiffness ($p < 1e-15$) effects tested significant. g) N= 120 cells from 3 independent experiments. Both MW ($p < 1e-15$) and Stiffness ($p = 0,0015$) effects tested significant. h) N= 120 cells from 3 independent experiments. Both NLS strength ($p < 1e-15$) and Stiffness ($p = 0,0012$) effects tested significant. Two-way ANOVA, Šídák's multiple comparisons test was used to obtain p-values between conditions. Scale bars: 20 μm . Data are mean \pm SEM. Source numerical data are available in source data.

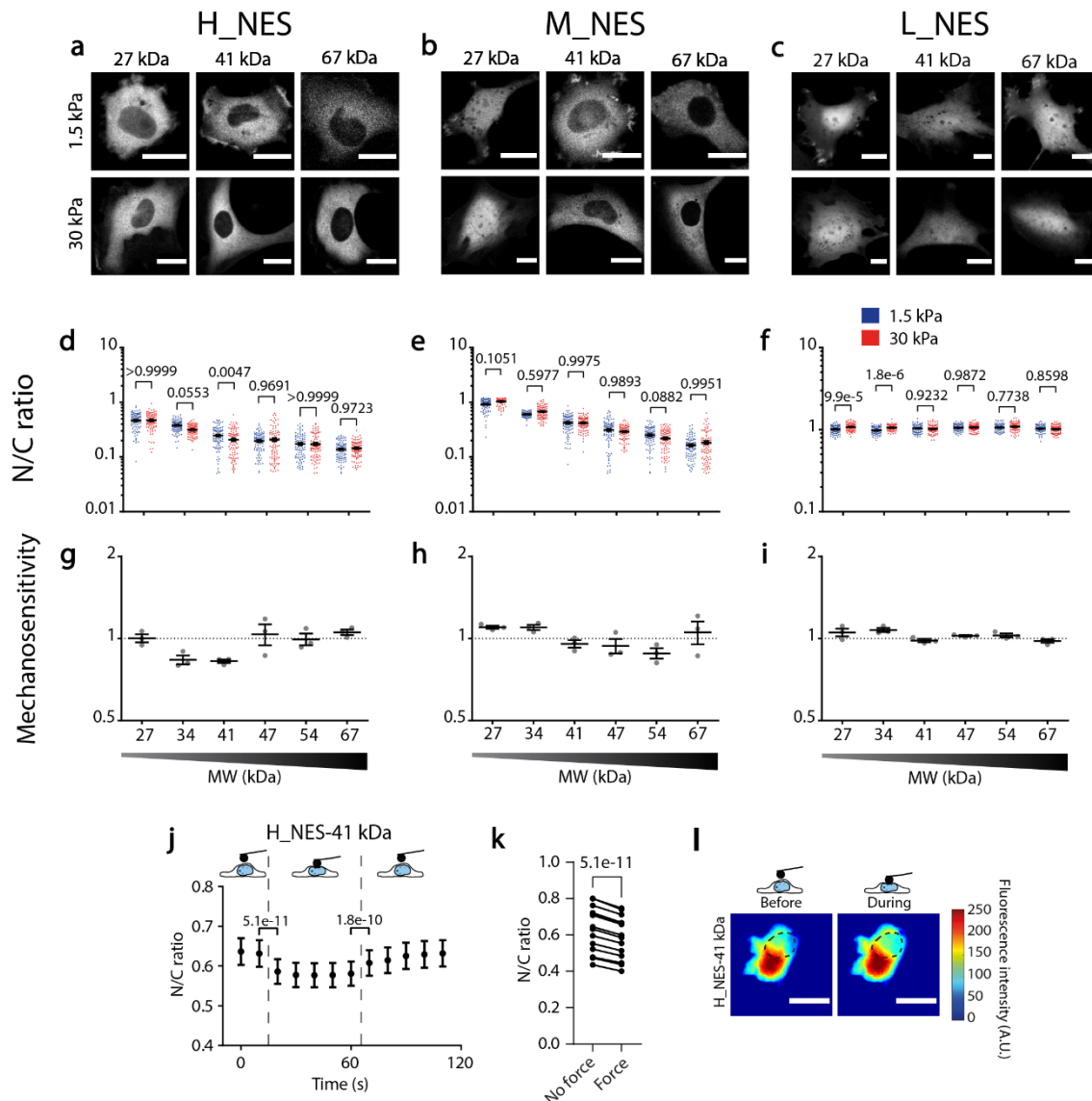


Figure 5. Balance between affinity to Exportin1 and MW defines the mechanosensitivity of nuclear localization in constructs containing NES signals. **a-c)** Representative examples of construct distribution in cells seeded in substrates of 1.5kPa or 30kPa, for H_NES constructs at different MW, M_NES constructs at different MW, and L_NES constructs at different MW. **d-f)** N/C ratios corresponding to the same conditions as A-C. **d)** N= 90 cells from 3 independent experiments. Both MW ($p < 1e-15$) and Stiffness ($p = 0.0162$) effects tested significant. **e)** N= 120 cells from 3 independent experiments. Only MW effects tested significant ($p < 1e-15$). **f)** N= 90 cells from 3 independent experiments. Both MW ($p < 1e-15$) and Stiffness ($p = 0.0001$) effects tested significant. Two-way ANOVA, Šídák's multiple comparisons test was used to obtain p-values between conditions. **g-i)** Mechanosensitivity corresponding to the same conditions as A-C. Mechanosensitivity is defined as $(N/C)_{stiff}/(N/C)_{soft}$ ($n = 3$ experiments). **j)** N/C ratios of H_NES 41 kDa construct in cells seeded on 1.5 kPa gels before, during, and after nuclear deformation with AFM. **k)** From data in j, paired dot plots of the time points right before and after force application. In j and k, N= 15 cells from 3 independent experiments. p-values were calculated with a two-tailed paired t-test, traces of all cells are shown in Extended Data Fig. 8. **l)** Corresponding images of constructs before and during force application, dotted line marks nucleus outline. Scale bars 20 μ m. Data are mean \pm SEM. Source numerical data are available in source data.

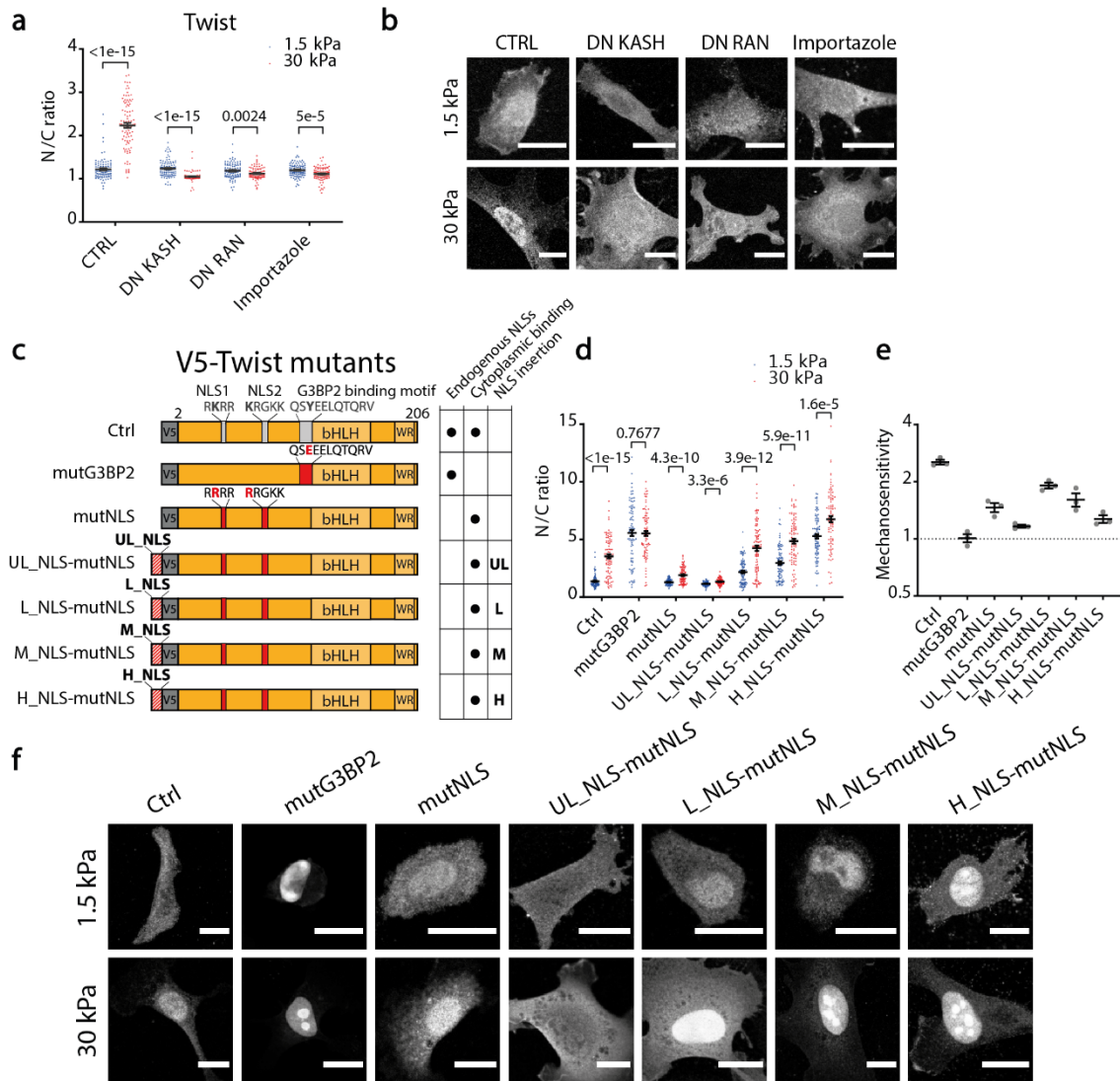
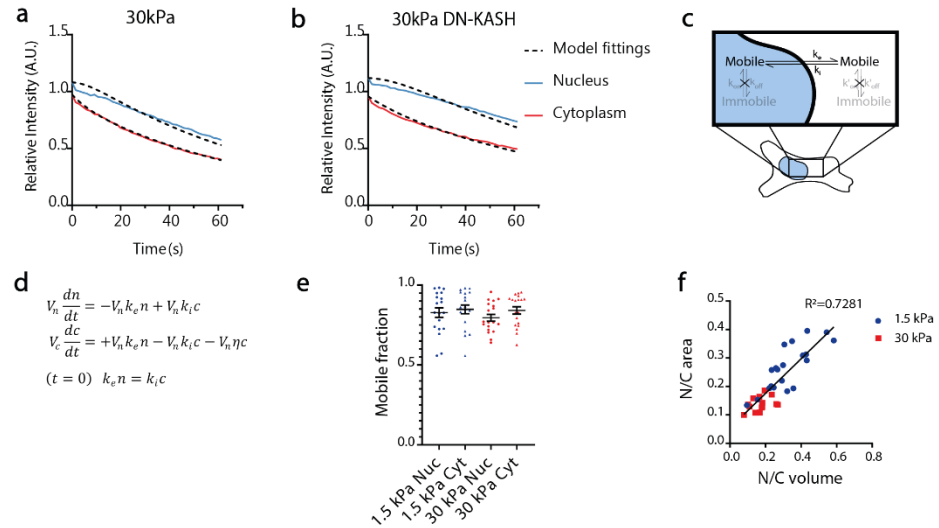
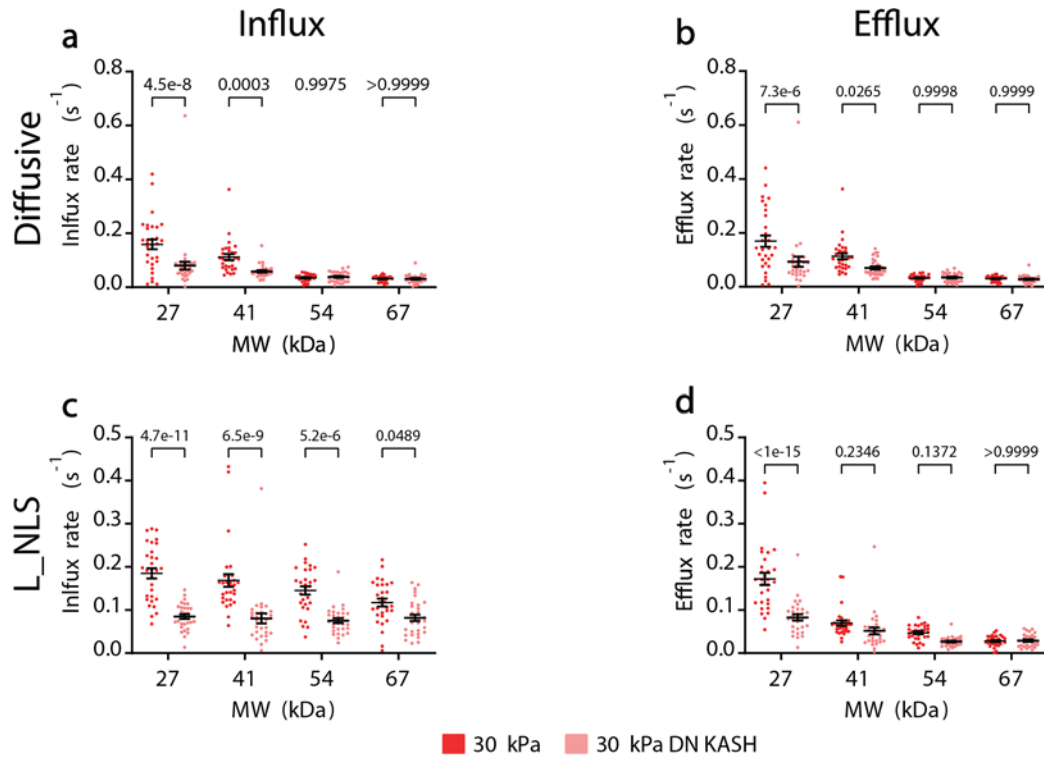


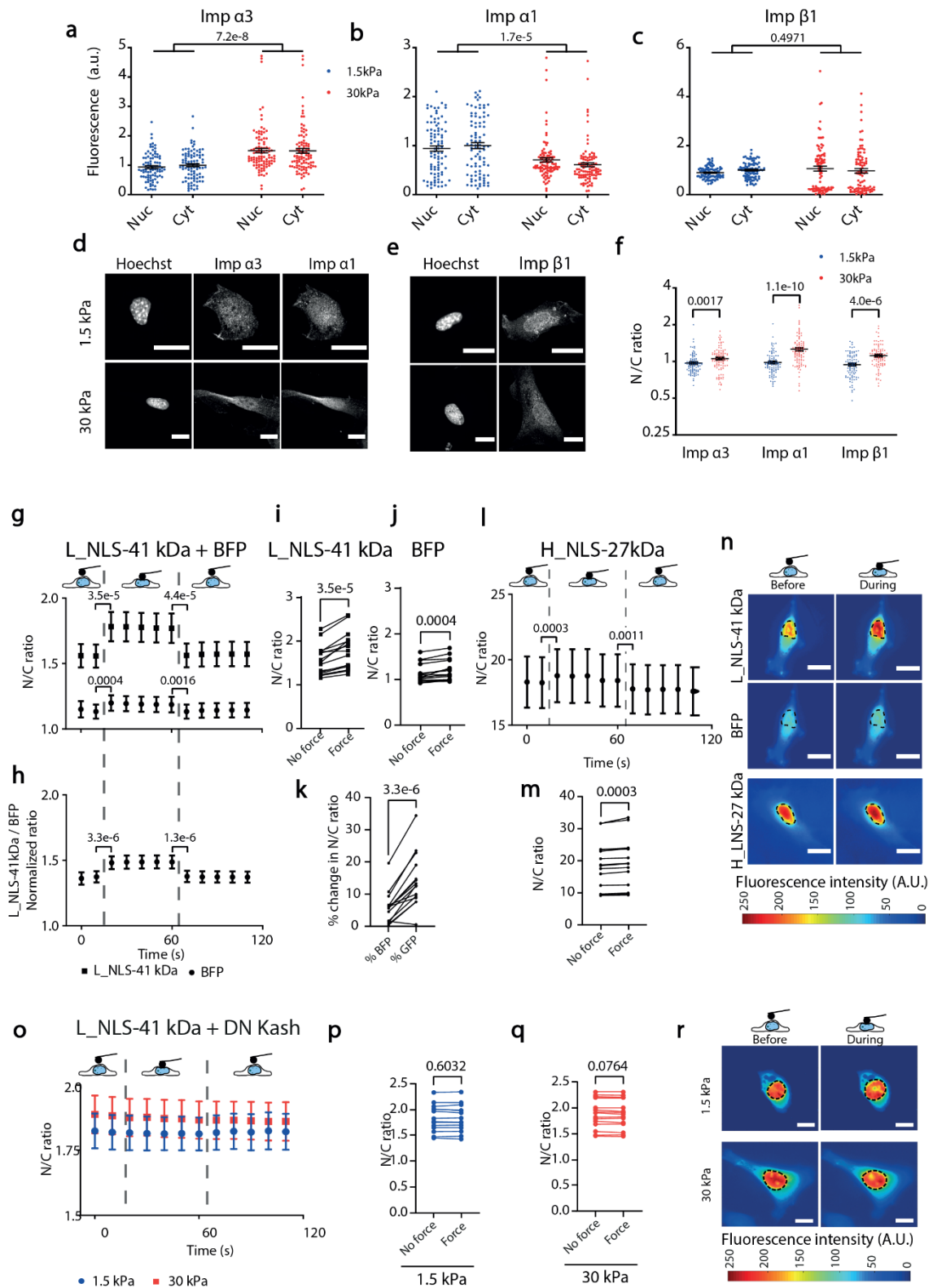
Figure 6. The mechanosensitivity of twist1 can be re-engineered with exogenous NLS sequences. **a)** N/C ratios of endogenous twist1 for cells on 1.5/30 kPa substrates, and under indicated treatments. N= 100 cells from 3 independent experiments. p-values from two-tailed Mann-Whitney tests, corrected for multiple tests in the intracondition comparisons with the two-stage step-up method of Benjamini, Krieger and Yekuteili. **b)** Corresponding images of twist1 distribution. **c)** Scheme of different twist1 mutants. Mutations inactivating both NLS sequences and the G3BP2 binding motif are indicated in red. **d)** N/C ratios of transfected twist1 mutants for cells on 1.5/30 kPa substrates. N= 90 cells from 3 independent experiments. p-values from two-tailed Mann-Whitney tests, corrected for multiple tests with the two-stage step-up method of Benjamini, Krieger and Yekuteili. **e)** Corresponding construct mechanosensitivities, defined as $(N/C)_{stiff}/(N/C)_{soft}$ (N= 3 experiments). **f)** Corresponding images showing the distribution of the different mutants. Scale bars, 20 μ m, data are mean \pm SEM. Source numerical data are available in source data.



Extended data figure 1. a,b) Examples of curves showing fluorescence intensity as a function of time in the nucleus and cytoplasm in FLIP experiments on two example cells transfected with the diffusive 41kDa construct and seeded on a) 30 kPa in control condition and b) 30kPa with DN-KASH overexpression. Data represent the mean fluorescence intensity of the compartments (nucleus/cytoplasm), normalized with the mean of the whole cell before the beginning of photobleaching, and corrected for background signal. Each curve depicts a representative experiment of one cell each. **c,d)** Cartoon and equations describing the model used for fitting curves as in A,B, and calculating influx and efflux rates. The model considers the molecules to freely diffuse inside the nuclear and cytoplasmic compartments (see methods). **e)** Mobile fraction of the L_NLS 41kDa construct in the nucleus (Nuc) and cytoplasm (Cyt) of cells seeded on 1.5/30 kPa gels. N=19 cells from 3 independent experiments, lines show mean \pm SEM **f)** For cells seeded on 1.5 and 30 kPa gels, correlation between nuclear to cytosolic ratios of volume, and of areas as measured in confocal slices used for FLIP measurements; regression equation $y = 0,6075 x + 0,05375$. N=20 (1.5kPa) and N=14 (30kPa) cells from 2 independent experiments. Black line shows the linear regression. Source numerical data are available in source data.

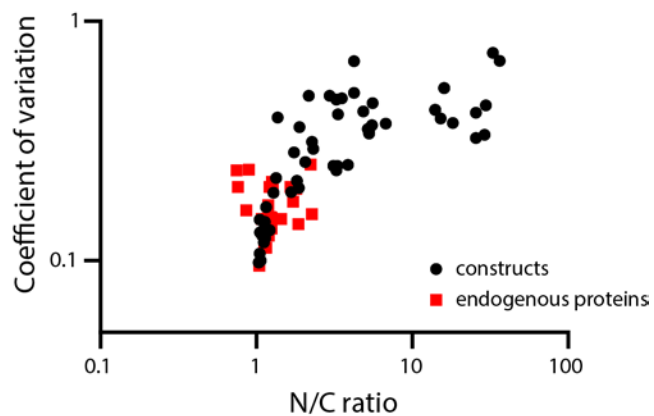


Extended data figure 2. a,b) Influx and efflux rates of diffusive constructs for cells seeded on 30 kPa gels, with or without DN-KASH overexpression. In a, both MW ($p < 1e-15$) and DN KASH ($p = 1e-6$) effects tested significant. In b, both MW ($p < 1e-15$) and DN KASH ($p = 0.0002$) effects tested significant. **c,d)** Influx and efflux rates of constructs containing L-NLS for cells seeded on 30 kPa gels, with or without DN-KASH overexpression. In c, both MW ($p = 0.0025$) and DN KASH ($p < 1e-15$) effects tested significant. In d, both MW ($p < 1e-15$) and DN KASH ($p = 3.4e-10$) effects tested significant. In all panels, $N = 30$ cells from 3 independent experiments. Two-way ANOVA, Šidák's multiple comparisons test was used to obtain p-values between conditions. Data are mean \pm SEM. Source numerical data are available in source data.

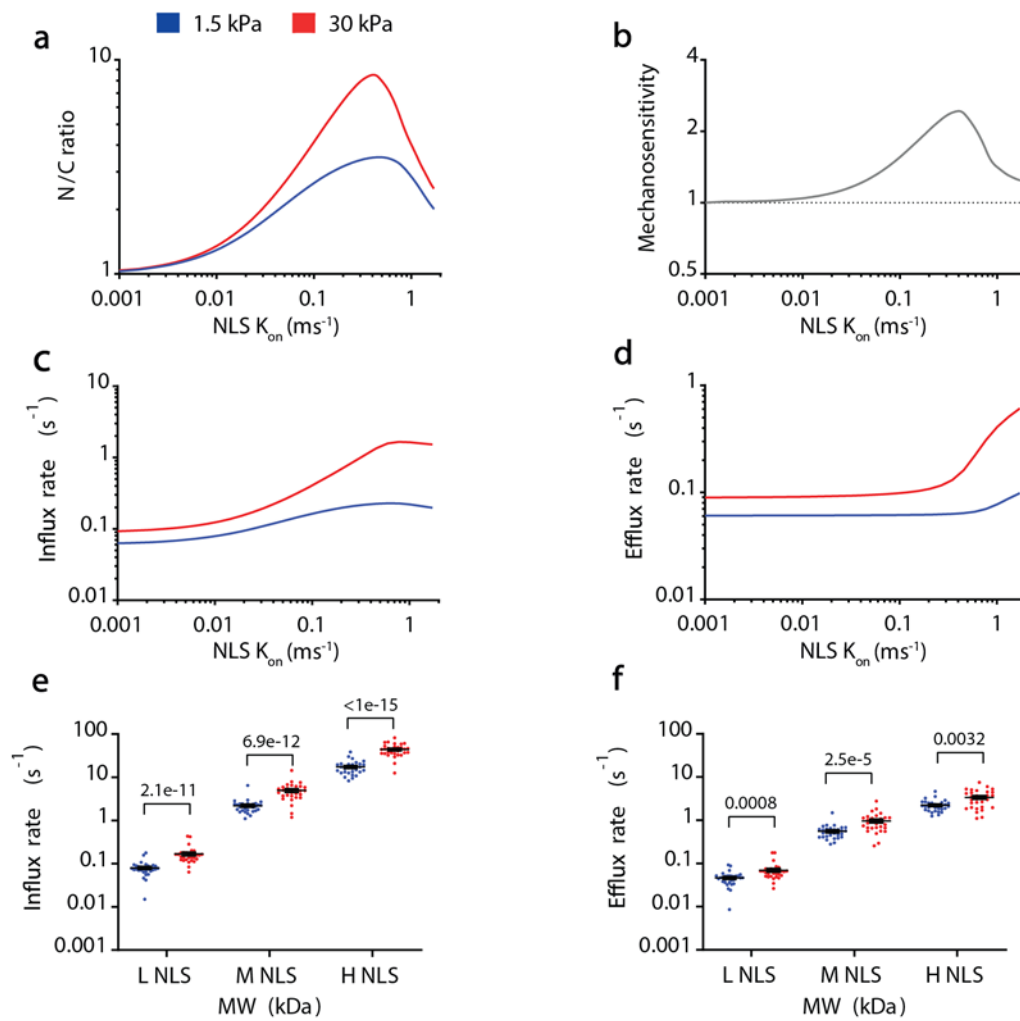


Extended data figure 3. a-c) Average fluorescence intensities of nuclear and cytoplasmic areas of cells seeded on substrates of 1.5 or 30 kPa stiffness and immunostained for importin $\alpha 3$ (imp $\alpha 3$) importin $\alpha 1$ (imp $\alpha 1$), and importin $\beta 1$ (imp $\beta 1$). N= 90 cells from 3 independent experiments. The effect of substrate stiffness tested significant for importin $\alpha 3$ ($p=7.2e-8$) and importin $\alpha 1$ ($p=1.7e-5$), but not for importin $\beta 1$ ($p=0.4971$). p -values from Two-way ANOVA **d-e)** Corresponding example images showing the nucleus (Hoechst) and the distribution of the different importins. **f)** Corresponding quantification of nuclear to cytoplasmic ratio of importin localization. N= 91,98, 91, 98, 90, 90 cells (from left to right) from 3

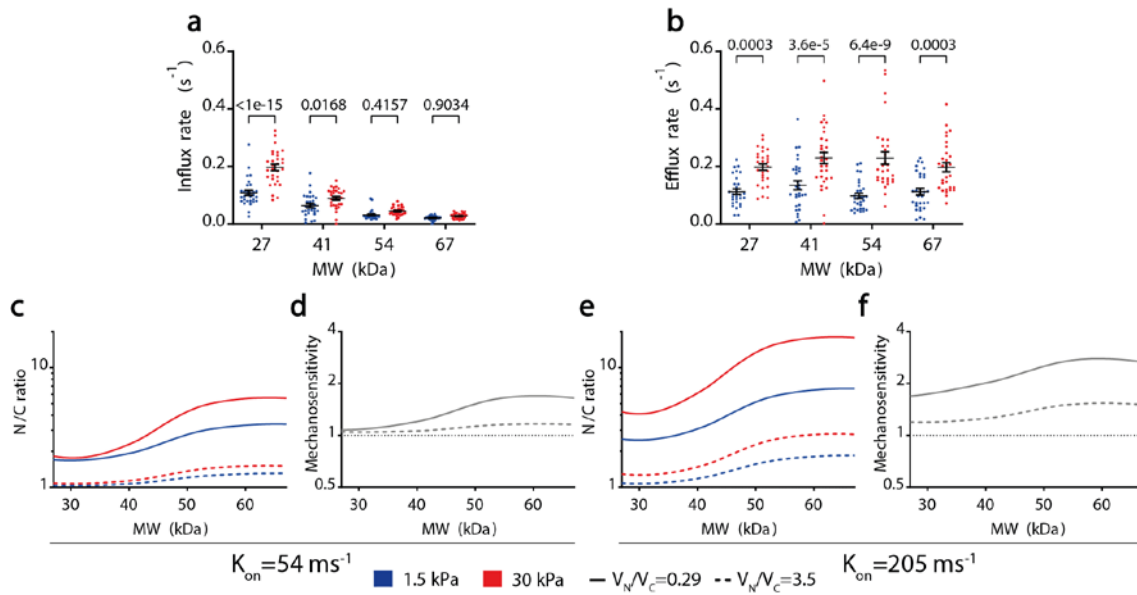
independent experiments. p-values from independent two-tailed Mann-Whitney tests. **g)** N/C ratios of L_NLS-41 kDa or BFP constructs in cells seeded on 1.5 kPa gels before, during, and after nuclear deformation with AFM. **h)** L_NLS-41 kDa ratios normalized by BFP ratios, from panel g) paired measures. **i,j)** from g, corresponding paired dot plots of the time points right before and after force application. **k)** from g, corresponding % change in N/C ratios right after force application for both constructs. In g,h,i,j,k N= 15 cells from 3 independent experiments, p-values were calculated with a two-tailed paired t-test. **l)** N/C ratios of H_NLS-27 kDa construct in cells seeded on 1.5 kPa gels before, during, and after nuclear deformation with AFM. **m)** from l, corresponding paired dot plots of the time points right before and after force application. In l, m, N= 15 cells from 3 independent experiments. p-values were calculated with a two-tailed paired t-test. **n)** Corresponding images of constructs before and during force application, dotted line marks nucleus outline. **o)** N/C ratios of the L_NLS-41 kDa construct in cells co-transfected with DN-KASH and seeded on 1.5 or 30 kPa gels before, during, and after nuclear deformation with AFM. Data are mean \pm SEM. **p,q)** from o, corresponding paired dot plots of the time points right before and after force application. In o,p,q, N= 15 cells from 3 independent experiments. p-values were calculated with a two-tailed paired t-test, traces of all cells are shown in Extended Data Fig. 8. **r)** Corresponding images of constructs before and during force application, dotted line marks nucleus outline. Scale bars, 20 μ m. Note: in AFM experiments, non-mechanosensitive constructs (BFP and H_NLS) still show a small increase with force, likely due to lensing effects caused by changes in cell shape during indentation. This increase (~6% for BFP, ~2% for H_NLS) is much smaller than that of the mechanosensitive construct (L_NLS 41 kDa, ~14%), see panel k. Panel h in fact shows the response of the L_NLS construct after factoring out the response of BFP. Data are mean \pm SEM in all panels. Source numerical data are available in source data.



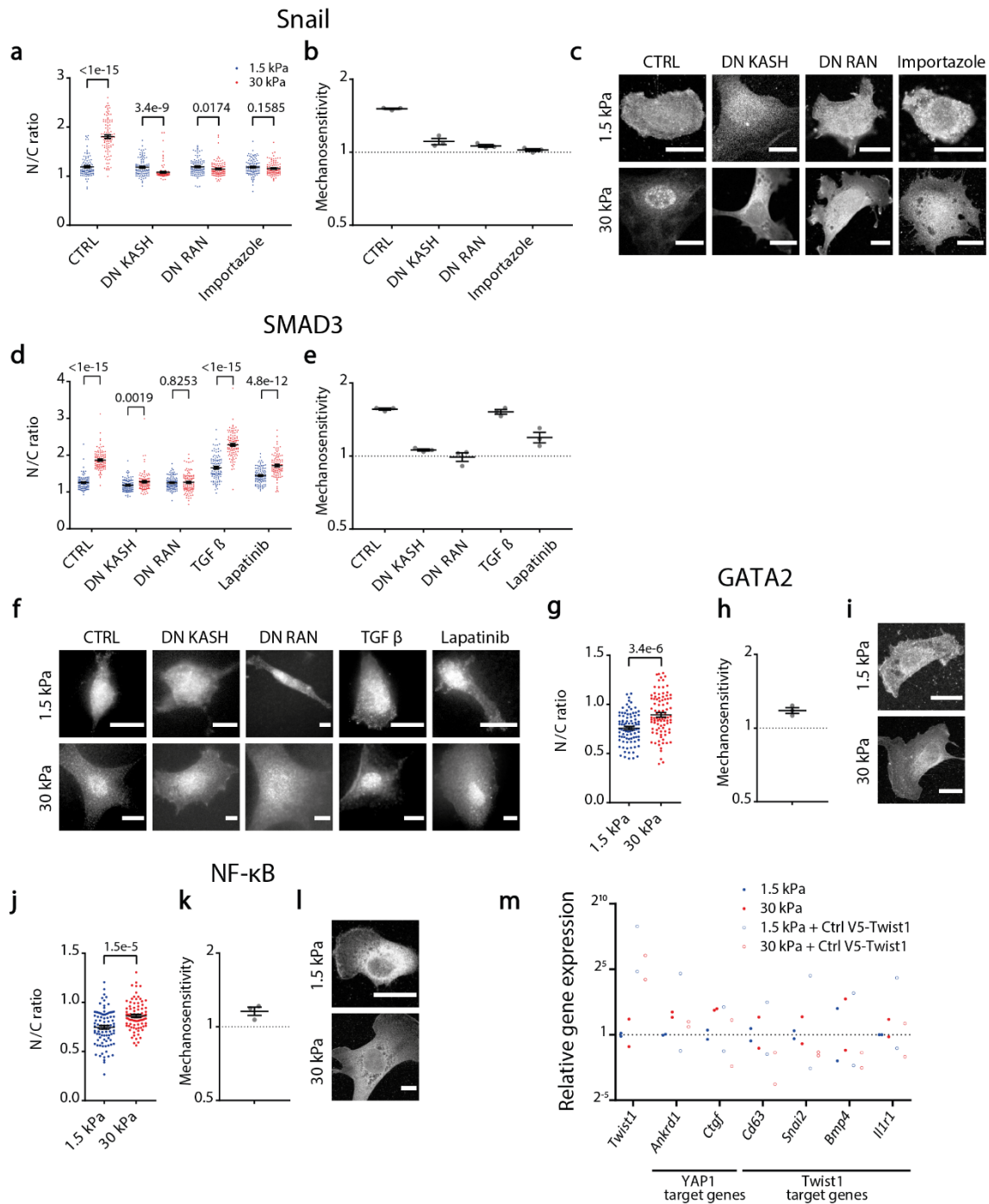
Extended data figure 4. Relationship between mean N/C ratio as reported in figures, and corresponding coefficient of variation (standard deviation divided by the mean). The different points show all different constructs and conditions reported in the manuscript. Black dots indicate values of overexpressed engineered constructs, red squares indicate values of stained endogenous proteins. Source numerical data are available in source data.



Extended data figure 5. (a-d) Model predictions for N/C ratios (a), mechanosensitivities (b), influx rates (c) and efflux rates (d) for 41kDa constructs as a function of NLS affinity (modelled by the binding rate K_{on} between the NLS and importin α). **e-f)** Experimental Influx and efflux rates of 41 kDa constructs containing NLS signals of different affinity for importin β . In both cases (e,f), NLS strength and substrate stiffness effects tested significant (respectively: e) $p < 1e-15$, $p < 1e-15$, f) $p < 1e-15$, $p = 2.4e-10$). $N = 30$ cells from 3 independent experiments. p -values from Two-way ANOVA. Data are mean \pm SEM. Source numerical data are available in source data.

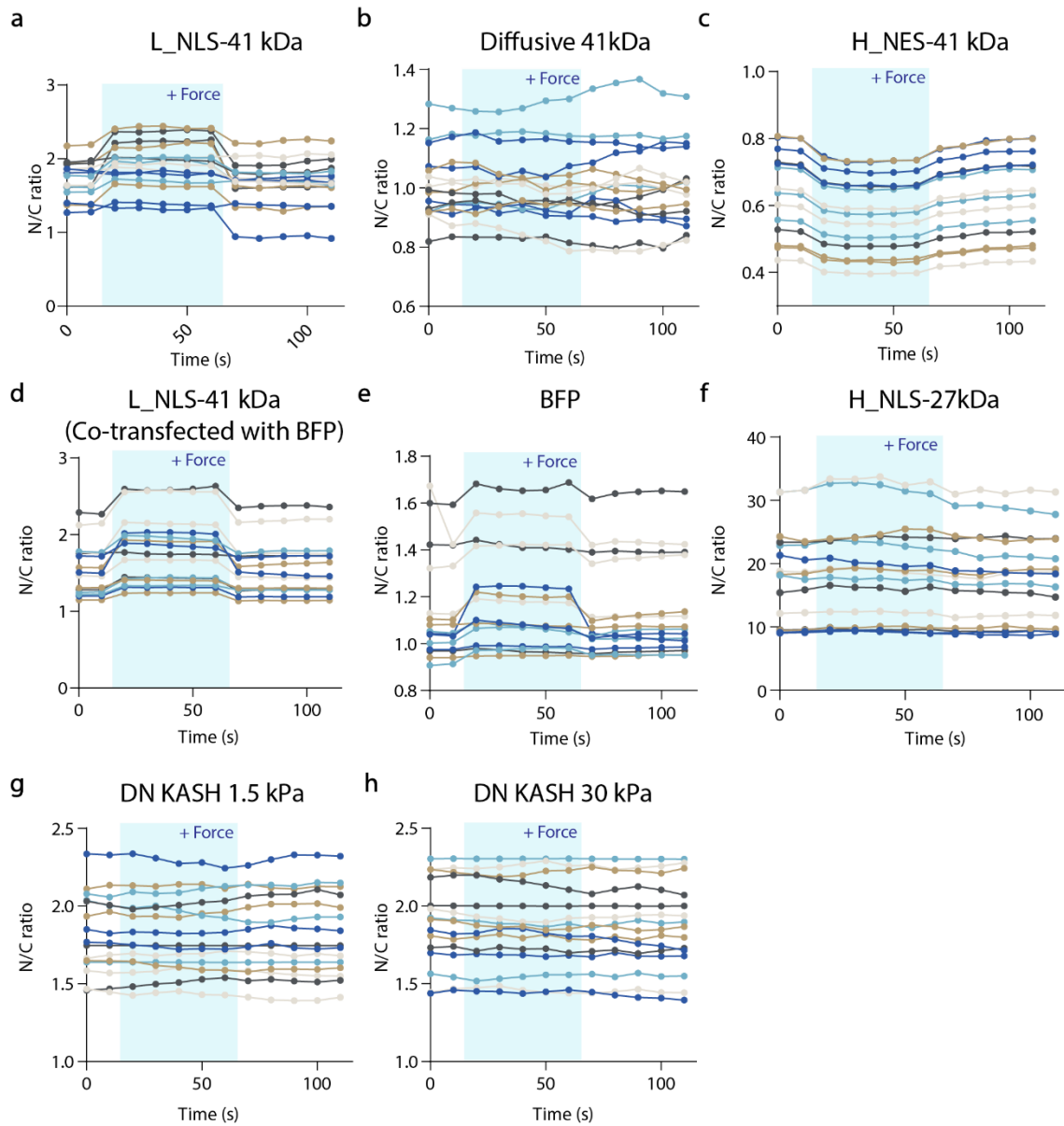


Extended data figure 6. For M_NES constructs, influx rates (mediated by passive transport) and efflux rates (mediated by facilitated transport) as a function of molecular weight. N= 30 cells from 3 independent experiments. Substrate stiffness effects tested significant in both cases (a) $p=5.1e-13$; b) $p<1e-15$; MW only tested significant for influx, a) $p<1e-15$; b) $p=0.2138$). Two-way ANOVA, Šídák's multiple comparisons test was used to obtain p-values between conditions. Data presented as mean \pm SEM. **c-d)** Model predictions of N/C ratios (c) and mechanosensitivities (d) for an NLS with a binding rate k_{on} of 54 ms^{-1} as a function of MW. Data are shown for experimentally measured N/C volume ratios (0.29) and for inverted volume ratios (3.5). **e-f)** Same predictions as in c,d for an NLS with a binding rate k_{on} of 205 ms^{-1} . Note that these predictions simply evaluate the role of N/C volumes on import, they do not explicitly model the export cycle (and hence mechanosensitivities are above and not below 1). Source numerical data are available in source data.



Extended data figure 7. a-c) For Snail stainings at different conditions, quantifications of N/C ratios on 1.5/30 kPa substrates (a, N= 100 cells from 3 independent repeats), corresponding mechanosensitivities for the 3 different repeats (b), and representative images (c). **d-f)** For SMAD3 stainings at different conditions, quantifications of N/C ratios on 1.5/30 kPa substrates (d, N= 100 cells from 3 different repeats), corresponding mechanosensitivities for the 3 different repeats (e), and representative images (f). **g-i)** For GATA2 stainings at different conditions, quantifications of N/C ratios on 1.5/30 kPa substrates (g, N= 90 cells from 3 independent repeats), Corresponding mechanosensitivities for the 3 different repeats (h), and representative images (i). **j-l)** For NF- κ B stainings at different conditions, quantifications of N/C ratios on 1.5/30 kPa substrates, (j, N= 90 cells from 3 independent repeats), corresponding mechanosensitivities for the 3 different repeats (k), and representative images (l). For a-l, data are presented as mean \pm SEM, scale bars correspond to 20 μ m, and p-values from corrected multiple two-tailed Mann-Whitney (a,d) and two-tailed Mann-Whitney (g,j) tests. **m)** Relative gene expression of

different genes as assessed with qPCR. Conditions are cells seeded on 1.5 or 30 kPa substrates, overexpressing or not a WT twist1 construct (Ctrl V5-twist1). Gene expression is shown relative to the 1.5 kPa condition without overexpression. n=2 independent experimental repeats. Source numerical data are available in source data.



Extended data figure 8. Plots showing the evolution with time of N/C ratios before, during and after force application to the cell nucleus for all cells measured. a-b) AFM experiments reported in Figure 3, c) Figure 5, and d-h) Extended Data Figure 3. Source numerical data are available in source data.

References:

1. Broders-Bondon, F., Ho-Boulidoires, T. H. N., Fernandez-Sanchez, M. E. & Farge, E. Mechanotransduction in tumor progression: The dark side of the force. *Journal of Cell Biology* vol. 217 1571–1587 (2018).
2. Hamant, O. & Saunders, T. E. Shaping Organs: Shared Structural Principles across Kingdoms. *Annual Review of Cell and Developmental Biology* **36**, 385–410 (2020).
3. Humphrey, J. D., Schwartz, M. A., Tellides, G. & Milewicz, D. M. Role of mechanotransduction in vascular biology: focus on thoracic aortic aneurysms and dissections. *Circ Res* **116**, 1448–1461 (2015).
4. Lombardi, M. L. *et al.* The interaction between nesprins and sun proteins at the nuclear envelope is critical for force transmission between the nucleus and cytoskeleton. *Journal of Biological Chemistry* **286**, 26743–26753 (2011).
5. Arsenovic, P. T. *et al.* Nesprin-2G, a Component of the Nuclear LINC Complex, Is Subject to Myosin-Dependent Tension. *Biophysical Journal* **110**, 34–43 (2016).
6. Elosegui-Artola, A. *et al.* Force Triggers YAP Nuclear Entry by Regulating Transport across Nuclear Pores. *Cell* **171**, 1397-1410 e14 (2017).
7. Kirby, T. J. & Lammerding, J. Emerging views of the nucleus as a cellular mechanosensor. *Nature Cell Biology* **20**, 373–381 (2018).
8. Nava, M. M. *et al.* Heterochromatin-Driven Nuclear Softening Protects the Genome against Mechanical Stress-Induced Damage. *Cell* **181**, 800-817.e22 (2020).
9. Tajik, A. *et al.* Transcription upregulation via force-induced direct stretching of chromatin. *Nat Mater* **15**, 1287–1296 (2016).
10. Swift, J. *et al.* Nuclear lamin-A scales with tissue stiffness and enhances matrix-directed differentiation. *Science (1979)* **341**, 1240104 (2013).
11. Lomakin, A. J. *et al.* The nucleus acts as a ruler tailoring cell responses to spatial constraints. *Science (1979)* **370**, eaba2894 (2020).
12. Venturini, V. *et al.* The nucleus measures shape changes for cellular proprioception to control dynamic cell behavior. *Science (1979)* **370**, eaba2644 (2020).
13. Kassianidou, E., Kalita, J. & Lim, R. Y. H. The role of nucleocytoplasmic transport in mechanotransduction. *Experimental Cell Research* **377**, 86–93 (2019).
14. Zhao, X. H. *et al.* Force activates smooth muscle alpha-actin promoter activity through the Rho signaling pathway. *Journal of Cell Science* **120**, 1801–1809 (2007).
15. Ho, C. Y., Jaalouk, D. E., Vartiainen, M. K. & Lammerding, J. Lamin A/C and emerin regulate MKL1–SRF activity by modulating actin dynamics. (2013) doi:10.1038/nature12105.

16. Fernandez-Sanchez, M. E. *et al.* Mechanical induction of the tumorigenic [bgr]-catenin pathway by tumour growth pressure. *Nature* **523**, 92–95 (2015).
17. Gayrard, C., Bernaudin, C., Dejardin, T., Seiler, C. & Borghi, N. Src- and confinement-dependent FAK activation causes E-cadherin relaxation and beta-catenin activity. *Journal of Cell Biology* (2018) doi:10.1083/jcb.201706013.
18. Aragona, M. *et al.* Mechanisms of stretch-mediated skin expansion at single-cell resolution. *Nature* **584**, 268–273 (2020).
19. Chang, L. *et al.* The SWI/SNF complex is a mechanoregulated inhibitor of YAP and TAZ. *Nature* **563**, 265–269 (2018).
20. Ege, N. *et al.* Quantitative Analysis Reveals that Actin and Src-Family Kinases Regulate Nuclear YAP1 and Its Export. *Cell Systems* **6**, 692-708.e13 (2018).
21. Elosegui-Artola, A. *et al.* Force Triggers YAP Nuclear Entry by Regulating Transport across Nuclear Pores. *Cell* **171**, 1397-1410 e14 (2017).
22. Jacchetti, E. *et al.* The nuclear import of the transcription factor MyoD is reduced in mesenchymal stem cells grown in a 3D micro-engineered niche. *Scientific Reports* 2021 11:1 **11**, 1–19 (2021).
23. SR, W. & MP, R. The nuclear pore complex and nuclear transport. *Cold Spring Harb Perspect Biol* **2**, (2010).
24. M, B. & E, H. The nuclear pore complex: understanding its function through structural insight. *Nat Rev Mol Cell Biol* **18**, 73–89 (2017).
25. Paine, P. L. & Feldherr, C. M. Nucleocytoplasmic exchange of macromolecules. *Experimental Cell Research* **74**, 81–98 (1972).
26. Timney, B. L. *et al.* Simple rules for passive diffusion through the nuclear pore complex. *Journal of Cell Biology* **215**, 57–76 (2016).
27. Mohr, D., Frey, S., Fischer, T., Güttler, T. & Görlich, D. Characterisation of the passive permeability barrier of nuclear pore complexes. *The EMBO Journal* **28**, 2541–2553 (2009).
28. Denning, D. P., Patel, S. S., Uversky, V., Fink, A. L. & Rexach, M. Disorder in the nuclear pore complex: The FG repeat regions of nucleoporins are natively unfolded. *Proceedings of the National Academy of Sciences* **100**, 2450–2455 (2003).
29. Yuh, M. C. & Blobel, G. Karyopherins and nuclear import. *Current Opinion in Structural Biology* **11**, 703–715 (2001).
30. Nachury, M. V. & Weis, K. The direction of transport through the nuclear pore can be inverted. *Proceedings of the National Academy of Sciences* **96**, 9622–9627 (1999).
31. Cautain, B., Hill, R., De Pedro, N. & Link, W. Components and regulation of nuclear transport processes. *FEBS Journal* vol. 282 445–462 (2015).

32. Kalderon, D., Roberts, B. L., Richardson, W. D. & Smith, A. E. A short amino acid sequence able to specify nuclear location. *Cell* **39**, 499–509 (1984).
33. Görlich, D. Transport into and out of the cell nucleus. *The EMBO Journal* **17**, 2721–2727 (1998).
34. Wenthe, S. R. & Rout, M. P. The Nuclear Pore Complex and Nuclear Transport. *Cold Spring Harbor Perspectives in Biology* **2**, a000562 (2010).
35. Niopek, D., Wehler, P., Roensch, J., Eils, R. & Di Ventura, B. Optogenetic control of nuclear protein export. *Nature Communications* **7**, 1–9 (2016).
36. Elosegui-Artola, A. *et al.* Mechanical regulation of a molecular clutch defines force transmission and transduction in response to matrix rigidity. *Nature Cell Biology* **18**, 540–548 (2016).
37. Schiller, H. B. *et al.* beta1- and alphaV-class integrins cooperate to regulate myosin II during rigidity sensing of fibronectin-based microenvironments. *Nature Cell Biology* **15**, 625–636 (2013).
38. Lombardi, M. L. *et al.* The interaction between nesprins and sun proteins at the nuclear envelope is critical for force transmission between the nucleus and cytoskeleton. *Journal of Biological Chemistry* **286**, 26743–26753 (2011).
39. Hodel, M. R., Corbett, A. H. & Hodel, A. E. Dissection of a nuclear localization signal. *Journal of Biological Chemistry* **276**, 1317–1325 (2001).
40. Lyman, S. K., Guan, T., Bednenko, J., Wodrich, H. & Gerace, L. Influence of cargo size on Ran and energy requirements for nuclear protein import. *Journal of Cell Biology* **159**, 55–67 (2002).
41. Ribbeck, K. & Görlich, D. The permeability barrier of nuclear pore complexes appears to operate via hydrophobic exclusion. *EMBO Journal* **21**, 2664–2671 (2002).
42. Lowe, A. R. *et al.* Selectivity mechanism of the nuclear pore complex characterized by single cargo tracking. *Nature* **467**, 600–603 (2010).
43. Kopito, R. B. & Elbaum, M. Nucleocytoplasmic transport: A thermodynamic mechanism. <http://dx.doi.org/10.2976/1.3080807> **3**, 130–141 (2010).
44. Kim, S. & Elbaum, M. A Simple Kinetic Model with Explicit Predictions for Nuclear Transport. *Biophysical Journal* **105**, 565–569 (2013).
45. Jovanovic-Talisman, T. & Zilman, A. Protein Transport by the Nuclear Pore Complex: Simple Biophysics of a Complex Biomachine. *Biophysical Journal* vol. 113 6–14 (2017).
46. Görlich, D., Seewald, M. J. & Ribbeck, K. Characterization of Ran-driven cargo transport and the RanGTPase system by kinetic measurements and computer simulation. *The EMBO Journal* **22**, 1088–1100 (2003).
47. Kanwal, C., Mu, S., Kern, S. E. & Lim, C. S. Bidirectional on/off switch for controlled targeting of proteins to subcellular compartments. *Journal of Controlled Release* **98**, 379–393 (2004).

48. Kim, S. & Elbaum, M. Enzymatically driven transport: a kinetic theory for nuclear export. *Biophys J* **105**, 1997–2005 (2013).
49. Dupont, S. *et al.* Role of YAP/TAZ in mechanotransduction. *Nature* **474**, 179–183 (2011).
50. Wei, S. C. *et al.* Matrix stiffness drives epithelial-mesenchymal transition and tumour metastasis through a TWIST1-G3BP2 mechanotransduction pathway. *Nature Cell Biology* **17**, 678–688 (2015).
51. Zhang, K. *et al.* Mechanical signals regulate and activate SNAIL1 protein to control the fibrogenic response of cancer-associated fibroblasts. *Journal of Cell Science* **129**, 1989–2002 (2016).
52. Furumatsu, T. *et al.* Mechanical stretch increases Smad3-dependent CCN2 expression in inner meniscus cells. *Journal of Orthopaedic Research* **30**, 1738–1745 (2012).
53. Mammoto, A. *et al.* A mechanosensitive transcriptional mechanism that controls angiogenesis. *Nature* **457**, 1103–1108 (2009).
54. Ishihara, S. *et al.* Substrate stiffness regulates temporary NF- κ B activation via actomyosin contractions. *Experimental Cell Research* **319**, 2916–2927 (2013).
55. Bischoff, F. R., Klebe, C., Kretschmer, J., Wittinghofer, A. & Ponstingl, H. RanGAP1 induces GTPase activity of nuclear Ras-related Ran. *Proc Natl Acad Sci U S A* **91**, 2587–2591 (1994).
56. Soderholm, J. F. *et al.* Importazole, a small molecule inhibitor of the transport receptor importin- β . *ACS Chemical Biology* **6**, 700–708 (2011).
57. F, H. *et al.* HER2/EGFR-AKT Signaling Switches TGF β from Inhibiting Cell Proliferation to Promoting Cell Migration in Breast Cancer. *Cancer Res* **78**, 6073–6085 (2018).
58. Singh, S. & Gramolini, A. O. Characterization of sequences in human TWIST required for nuclear localization. *BMC Cell Biology* **10**, 47 (2009).
59. Lin, D. H. *et al.* Architecture of the symmetric core of the nuclear pore. *Science* **352**, (2016).
60. Kosinski, J. *et al.* Molecular architecture of the inner ring scaffold of the human nuclear pore complex. *Science* **352**, 363–365 (2016).
61. Petrovic, S. *et al.* Architecture of the linker-scaffold in the nuclear pore. *bioRxiv* 2021.10.26.465796 (2021) doi:10.1101/2021.10.26.465796.
62. Hoelz, A., Debler, E. W. & Blobel, G. The structure of the nuclear pore complex. *Annu Rev Biochem* **80**, 613–643 (2011).
63. Zimmerli, C. E. *et al.* Nuclear pores dilate and constrict in cellulose. *Science* eabd9776 (2021) doi:10.1126/SCIENCE.ABD9776/SUPPL_FILE/SCIENCE.ABD9776_MOVIES_S1_TO_S7.ZIP.

64. Schuller, A. P. *et al.* The cellular environment shapes the nuclear pore complex architecture. *Nature* **2021** 1–5 (2021) doi:10.1038/s41586-021-03985-3.
65. García-García, M. *et al.* Mechanical control of nuclear import by Importin-7 is regulated by its dominant cargo YAP. *Nature Communications* **2022** *13*:1 **13**, 1–21 (2022).
66. Frey, S. *et al.* Surface Properties Determining Passage Rates of Proteins through Nuclear Pores. *Cell* **174**, 202–217.e9 (2018).
67. Infante, E. *et al.* The mechanical stability of proteins regulates their translocation rate into the cell nucleus. *Nature Physics* **2019** *15*:9 **15**, 973–981 (2019).
68. Aramburu, I. V. & Lemke, E. A. Floppy but not sloppy: Interaction mechanism of FG-nucleoporins and nuclear transport receptors. *Seminars in Cell and Developmental Biology* vol. 68 34–41 (2017).
69. Zimmerli, C. E. *et al.* Nuclear pores constrict upon energy depletion. *bioRxiv* 2020.07.30.228585 (2020) doi:10.1101/2020.07.30.228585.
70. Zhao, X. H. *et al.* Force activates smooth muscle alpha-actin promoter activity through the Rho signaling pathway. *Journal of Cell Science* **120**, 1801–1809 (2007).
71. Fernandez-Sanchez, M. E. *et al.* Mechanical induction of the tumorigenic [bgr]-catenin pathway by tumour growth pressure. *Nature* **523**, 92–95 (2015).

Methods

Cell culture and reagents

Mouse embryonic fibroblasts (MEFs) were cultured as previously described⁷², using Dulbecco's modified eagle medium (DMEM, Thermofischer Scientific, 41965-039) supplemented with 10% v/v FBS (Thermofischer Scientific, 10270-106), 1% v/v penicillin-streptomycin (Thermofischer Scientific, 10378-016), and 1.5% v/v HEPES 1M (Sigma Aldrich, H0887). Cell cultures were routinely checked for mycoplasma. CO₂-independent media was prepared by using CO₂-independent DMEM (Thermofischer Scientific, 18045-054) supplemented with 10% v/v FBS, 1% v/v penicillin-streptomycin, 1.5% v/v HEPES 1M, and 2% v/v L-Glutamine (Thermofischer Scientific, 25030-024). Media for AFM experiments was supplemented with Rutin (ThermoFischer Scientific, 132391000) 10 mg/l right before the experiment. Importazole (Sigma Aldrich) was used at 40 μM concentration for 1 h⁵⁶. Cells were transfected the day before the experiment using Neon transfection device (ThermoFischer Scientific) according to manufacturer's instructions. Cells were seeded ~4 h before the experiment.

Antibodies and compounds

For primary antibodies, we used Anti Twist antibody (Twist2C1A, Santa cruz, sc-81417, RRID:AB_1130910) 1:200, Mouse monoclonal antibody to SNAIL + SLUG - N-terminal

(clone number: CL3700; abcam, ab224731) 1:200, rabbit polyclonal anti SMAD3 (Cell Signaling, 9513, RRID:AB_2286450) 1:40, Rabbit polyclonal antibody to GATA2 (Abcam, ab153820) 1:200, rabbit polyclonal Anti-NF- κ B p65 antibody (abcam, ab16502, RRID:AB_443394) 1:200, KPNA4 / Importin alpha 3 (NBP1-31260 Novus Biologicals, RRID:AB_2133841) 1:200, KPNA2 / Importin alpha 1 (MAB6207 Bio-technie, Clone number: 682239) 1:200, KPNB1 / Importin Beta 1 (ab2811 Abcam, RRID:AB_2133989) 1:200. The secondary antibodies used were Alexa Fluor 488 anti-mouse (A-11029; Thermo Fischer Scientific, RRID:AB_2534088) and Alexa Fluor 555 anti-rabbit (A-21429; Thermo Fischer Scientific, RRID:AB_2535850) diluted 1:200. **Plasmids**

If not specified otherwise, plasmids were constructed via standard molecular biology methods. **LEXY plasmids:** NLS-mCherry-LEXY (pDN122) was a gift from Barbara Di Ventura & Roland Eils (Addgene plasmid # 72655 ; <http://n2t.net/addgene:72655> ; RRID:Addgene_72655)³⁵. **Nuclear transport plasmids:** NLS, NES, or nought combinations with different molecular weight modules were designed as following: Localization signal plus GGGGS linker, EGFP, and different repeats of Protein A (PrA) from *Staphylococcus aureus* modules. Nuclear Localization Signal sequences were extracted from Hodel *et al.* (2001)³⁹. Nuclear Export Signal sequences were extracted from Kanwal *et al.* (2004)⁴⁷. Protein A domain sequences were used originally in Timney *et al.* (2016)²⁶ and were kindly provided by M. Rout. NLS and NES insertions were performed following Liu and Naisith protocol⁷³. PrA insertions plasmid were constructed via Gibson Assembly protocol, as well as BFP plasmid from IG062. For more detailed information see tables S1 and S2. **DN-KASH DN-RAN:** DN (Dominant Negative)-KASH was described previously as EGFP-Nesprin1-KASH in Zhang *et al.*, (2001)⁷⁴. DN (Dominant Negative)-RAN (Addgene plasmid # 30309, described as pmCherry-C1-RanQ69L) was a gift from Jay Brenman⁷⁵. **Twist mutants:** pBABE-puro-mTwist was a gift from Bob Weinberg (Addgene plasmid # 1783 ; <http://n2t.net/addgene:1783> ; RRID:Addgene_1783)⁷⁶. mTwist was cloned into a pEGFP-C3 backbone and a V5 tag was included at the N-terminal. The different mutants were constructed by adding the corresponding NLS sequences and/or changing the indicated codons. For more detailed information see Supplementary Table 1.

Polyacrylamide gels

Polyacrylamide gels were prepared as previously described⁷⁷, and coated using a protocol adapted from the literature⁷⁸. Gels were prepared by mixing acrylamide (5.5% or 12% v/v for 1.5 or 30 kPa gels, respectively) and Bis-acrylamide (0.04% or 0.15% v/v for 1.5 or 30 kPa gels, respectively) with 2% v/v 200-nm-diameter dark red fluorescence carboxylate-modified beads (Fluospheres, ThermoFischer Scientific), 0.5% v/v ammonium persulphate (APS, Sigma Aldrich), and 0.05% tetramethylethylenediamine (TEMED, Sigma Aldrich), in PBS 1X. A drop of 22 μ l was placed on top of a glass bottom well and then sandwiched with an 18 mm diameter coverslip. Gels were then let for 45 min at room temperature to polymerize. Finally, gels were covered in PBS 1X and the

top coverslip was removed. To coat gels, we first prepared a mixture containing HEPES (0.5M, pH 6, 10% v/v), Acrylamide and Bis-Acrylamide (BioRad), N-hydroxysuccinimide (NHS, 0.3% v/v from an initial solution of 10 mg/ml in dimethyl sulfoxide, Sigma Aldrich), Irgacure 2959 (1% v/v, BASF), and Di(trimethylolpropane)tetra-acrylate (0.0012% v/v, Sigma Aldrich), in milliQ water. This mixture was placed on top of gels, and gels were then illuminated with UV light for 10 minutes. After exposure, gels were washed once with HEPES 25mM Ph 6 and once with PBS. Gels were then incubated with 10 µg/ml of fibronectin in PBS overnight at 4°C, UV treated in the hood for 10 minutes, washed once with PBS and immediately used. The rigidity (Young's modulus) of the gels was measured as previously described⁷⁹ using a Nanowizard 4 AFM (JPK). Silicon nitride pyramidal tips with an effective half angle θ of 20° and a nominal spring constant of $k=0.01$ N/m were used (MLCT, Bruker). The spring constant of the cantilevers was calibrated by thermal tuning using the simple harmonic oscillator model. Force-displacement curves with a peak-to-peak amplitude of 6 µm and a frequency of 1 Hz were acquired. 64 points near the gel centre were selected in each gel, separated 5 µm from each other. Eight gels produced in two batches were measured for each stiffness. To compute the Young's modulus (E), the Hertz model equation for pyramidal tips was fitted to the force-displacement curves, using the JPK software (JPK Data Processing Version 6.1.79). The equation was fitted for an effective indentation of 500 nm.

Immunostaining

Immunostainings were performed as previously described⁶. Cells were fixed with 4% v/v paraformaldehyde for 10 minutes, permeabilized with 0.1% v/v Triton X-100 for 40 minutes, blocked with 2% v/v Fish-Gelatin in PBS 1X for 40 minutes, incubated with primary antibody for 1 hour, washed 3 times with Fish-Gelatin-PBS for 5 minutes, incubated with secondary antibody for 1 hour, washed with Fish-Gelatin-PBS 3X for 5 minutes, and mounted using ProLong Gold Antifade Mountant (ThermoFischer Scientific).

Real-time PCR experiments

Real-time PCR experiments were performed according to the manufacturer's instructions (Applied Biosystems). Total mRNA was extracted from cells in the different conditions using the Qiagen RNeasy Micro Kit. Concentration of the obtained mRNA was measured with a Nanodrop ND-1000 Spectrophotometer. Equal amounts of RNA samples were reverse-transcribed into cDNA using the iScript™ cDNA Synthesis Kit. SYBR Green (Applied Biosystems 4385612) RT-qPCRs were performed in triplicates with a StepOnePlus System (Applied Biosystems) under standard conditions. The $2^{-\Delta\Delta Ct}$ method was used to calculate relative gene expression. All $\Delta\Delta Ct$ values were normalized to the housekeeping gene *GAPDH*. Primer sequences for the different measured genes are detailed in Supplementary Table 3.

Steady state image acquisition and analysis

Cells were imaged with a Nikon Eclipse Ti inverted confocal microscope with Micromanager (version 1.4.22), using a 60x water immersion objective 1.2 NA. Microscopy images were acquired by using Zeiss ZEN2.3 SP1 FP3 (black, version 14.0.24.201) or Micromanager (version 1.4.22). Nuclear to cytoplasmic (N/C) ratios were quantified manually by segmenting the nucleus using Hoechst (immunostaining) or taking advantage of the GFP tagged construct (live cells) by the following formula:

$$\frac{N}{C} = \frac{I_{nucleus} - I_{background}}{I_{cytoplasm} - I_{background}}$$

Where $I_{nucleus}$ and $I_{cytoplasm}$ are the mean fluorescence intensity of the nucleus and the cytoplasm respectively. ROIs in the nucleus and in the cytoplasm were selected manually next to each other, close to the nuclear membrane. $I_{background}$ is the mean intensity of the background far from the cell.

Mechanosensitivity was calculated once for each of the experimental repeats using the following formula:

$$mechanosensitivity = \frac{[N/C \text{ stiff substrate}]}{[N/C \text{ soft substrate}]}$$

Where $[N/C \text{ stiff substrate}]$ and $[N/C \text{ soft substrate}]$ are the average N/C ratios on stiff/soft substrates for all cells within the experimental repeat. These quantifications were done by using ImageJ software (version 1.53e).

Live cell AFM experiments

Live cell AFM experiments were carried out as previously described⁶. AFM experiments were carried out in a Nanowizard 4 AFM (JPK) mounted on top of a Nikon Ti Eclipse microscope, using the JPK software (JPK Data Processing Version 6.1.79). Polystyrene beads of 20 μm were attached using a non-fluorescent adhesive (NOA63, Norland Products) to the end of tipless MLCT cantilevers (Veeco). The spring constant of the cantilevers was calibrated by thermal tuning using the simple harmonic oscillator model. Experiments were carried out on cells previously transfected with the different constructs indicated in figures, incubated with Hoechst 33342 (Invitrogen), and seeded on 1.5 kPa gels. For each cell, the nucleus was identified by using the Hoechst fluorescence signal, and a force of 1.5 nN was applied to the nucleus. Once the maximum force was reached, the indentation was kept constant under force control, adjusting the z height by feedback control. An image was acquired every 10s by an Orca ER camera (Hamamatsu) and a 60X (NA = 1.2) objective.

Photoactivation experiment and quantification

Photoactivation experiments were done with a Zeiss LSM880 inverted confocal microscope using a 63X 1.46 NA oil immersion objective and using Zeiss ZEN2.3 SP1 FP3 (black, version 14.0.24.201). An argon laser was used with 561 nm wavelength for acquisition and 488 nm laser for stimulation. For experiments, 4 images were obtained before stimulation, followed by 19 images during stimulation, and 18 images during recovery. All images were acquired every 30 s. During the stimulation period, the

488 nm laser was irradiated to the whole field of view also every 30 s, during 1 s at 100% laser power.

To obtain the entry and exit coefficient a single exponential equation was fitted to the N/C ratio of each cell:

$$n/c(t) = (n/c)_0 e^{-kt}$$

Where $(n/c)_0$ is the initial ratio of the stimulation or recovery phase, t is time, and k is the entry or exit coefficient. The curve was fitted to the whole stimulation or recovery phase.

FRAP Data Acquisition and Analysis

Estimation of mobile fraction of proteins was done using fluorescence recovery after photobleaching (FRAP) experiments. FRAP involves bleaching a region of interest (ROI) and then tracing the recovery of fluorescence in that region with respect to time. Image acquisition was done with a Zeiss LSM880 inverted confocal microscope objective and using Zeiss ZEN2.3 SP1 FP3 (black, version 14.0.24.201), using a 63X 1.46 NA oil immersion objective and a 488nm wavelength argon laser at 100% laser power. We acquired images every 60 ms, before and after bleaching. We use two regions of interest (ROIs) for our experiments: first, the circular 14-pixel diameter ($\sim 6.9 \mu\text{m}^2$) region being bleached (ROIF). Second, the cell area segmented manually (ROIC). The data for ROIs consist of the fluorescence integrated density as a function of time from images acquired before and after photobleaching. For further analysis, we normalize the fluorescence intensities of ROIs using the double normalization method⁸⁰. Double normalization corrects for photobleaching during the post bleach imaging, and normalizes recovery fluorescence with a pre bleach signal. Double normalized intensity (I) for recovery signal can be calculated by using following formula.

$$I = \frac{F}{F_0} \times \frac{C_0}{C}$$

where F and C are the fluorescence integrated densities of ROIF and ROIC respectively for post bleach imaging, and F_0 and C_0 correspond to pre bleach imaging. The mobile fraction mf represents the fraction of molecules that are free to diffuse. It is estimated by using the first timepoint after bleaching (I_0) and the median of the last twenty timepoints (I_f) in the following expression:

$$mf = \frac{I_f - I_0}{1 - I_0}$$

FLIP Model

Fluorescence loss in photobleaching (FLIP) is used to assess influx and efflux rates of the different constructs. FLIP experiments involve continually bleaching of a region of interest (ROIb) and tracking signal loss from different regions. Quantification of these curves yields the transport dynamics between nucleus and cytoplasm. We set up experiments and analysis motivated from²⁰ for determining the rates of nuclear influx and efflux.

To model the FLIP data, we developed a system of Ordinary Differential Equations (ODEs) describing the change in protein concentration between two compartments i.e., the nucleus and the cytoplasm. These two compartments are linked with boundary fluxes going in (Q_i) and out (Q_e) of the nucleus (Fig S1).

We assume that the proteins remain in unbound and mobile state in each compartment. During steady state cells maintain a constant ratio (α) of protein concentration between nucleus (n) and cytoplasm (c), and the flux between both compartments is equal.

$$\alpha = \frac{n}{c}$$

$$Q_e = Q_i$$

During photobleaching the transport equations for the number of unbleached molecules in nucleus (N) and cytoplasm (C) can be described as follows, where (Q_b) is the number of molecules being bleached per unit time.

$$\frac{dN}{dt} = -Q_e + Q_i$$

$$\frac{dC}{dt} = +Q_e - Q_i - Q_b$$

The fluxes are proportional to the concentration of the compartment, times a rate coefficient. Here, k_e' , k_i' are efflux and influx rate coefficients respectively and η' is the bleaching rate:

$$Q_e = k_e'n \quad Q_i = k_i'c \quad Q_b = \eta'c$$

Because these rates (in units of volume per unit time) will depend on the size of the compartment, we define normalized rates as $k_e = k_e'/V_n$, $k_i = k_i'/V_n$, $\eta = \eta'/V_n$, where V_n is the volume of the nucleus. Note that we normalize both k_e and k_i by the same volume (that of the nucleus, V_n) so that the values remain comparable, and that equal k_e and k_i correspond to equal concentrations in nucleus and cytoplasm. Thus:

$$Q_e = V_n k_e n \quad Q_i = V_n k_i c \quad Q_b = V_n \eta c$$

This enables us to rewrite transport equations in terms of concentration.

During bleaching,

$$V_n \frac{dn}{dt} = -V_n k_e n + V_n k_i c$$

$$V_c \frac{dc}{dt} = +V_n k_e n - V_n k_i c - V_n \eta c$$

Where V_c is cytoplasm volume. During steady state,

$$V_n k_e n = V_n k_i c$$

$$k_e \frac{n}{c} = k_i$$

$$k_e = \frac{k_i}{\alpha}$$

One can further simplify these by using ratio of nuclear volume to cytoplasm volume
 $\beta = \frac{V_n}{V_c}$

$$\frac{dn}{dt} = -k_e n + k_i c$$

$$\frac{1}{\beta} \frac{dc}{dt} = +k_e n - k_i c - \eta c$$

By substituting k_i , we get following equations to solve ultimately:

$$\frac{dn}{dt} = -(\mathbf{k}_e)n + (\mathbf{k}_e\alpha)c \quad (\text{eq. 1})$$

$$\frac{dc}{dt} = +(\beta\mathbf{k}_e)n - (\beta\mathbf{k}_e\alpha + \beta\eta)c \quad (\text{eq. 2})$$

We then solve these equations numerically using MATLAB function ode15s, and fit them to the experimental data to get influx/efflux rates and bleaching rates. Variables in bold are the unknowns to be fitted with fminsearch function in MATLAB (R2020b).

FLIP Imaging and Analysis

For quantification of FLIP (Fluorescent Loss In Photobleaching) experiments, we followed the fluorescence intensities of three different regions, segmented manually: nucleus, cell, and background. Image acquisition was done with a Zeiss LSM880 inverted confocal microscope objective and using using Zeiss ZEN2.3 SP1 FP3 (black, version 14.0.24.201), using a 63X 1.46 NA oil immersion objective and a 488nm wavelength argon laser. We used a bleaching ROI of 17 x 17 (~12.9 μm^2) pixels. 10 baseline images were acquired every 3 seconds before photobleaching. Then, every 3 seconds (during a total of 120 seconds) the ROI was photobleached, and an image of 512 x 512 pixels was acquired. The power of the laser used to bleach was adjusted to result in the same bleaching rate η . Due to differences in cell morphology, this corresponded to 60% power for cells on 1.5 kPa substrates, and 100% power for cells on 30 kPa substrates. This difference occurred because cells were more rounded on soft gels and therefore thicker in the z axis, leading to a taller column of cytoplasm affected by photobleaching. Cells with bleaching rates above 0.12 were discarded. We note that differences in obtained rates between 1.5/30 kPa substrates were reproduced when comparing cells at 30 kPa with/without DN KASH overexpression, where cell morphologies and bleaching laser power was not altered. In the mathematical model, the transport between nucleus and cytoplasm is modelled as transport between two compartments, where the cytoplasm is continuously bleached. We assume that the concentration of protein is uniform in each compartment and that during steady state (before photobleaching) the ratio (α) between nucleus and cytoplasm's protein concentration is constant. The ROIs identified for nucleus and cytoplasm were narrow rings around the nucleus, either inside or outside of the nucleus. The average fluorescence intensity of these regions was used as a proxy for nuclear concentration (n) and cytoplasmic concentration (c). The intensities were corrected for background noise, and normalized by the total integrated cell intensity. Experimental data for n and c was used to solve equations 1 and 2, as explained above. The ratio of concentrations at steady state (α) was taken as n/c at the initial timepoint (before photobleaching). To calculate the ratio of nuclear to cytoplasmic volume (β), we first took confocal stacks of cells with a nuclear fluorescent

label (DAPI) and whole cell fluorescent label (GFP), seeded on both 1.5 kPa and 30 kPa gels. In those cells, we noted an excellent correlation between the nuclear/cytoplasmic ratio volume ratio β , and the nuclear/cytosolic area ratio, calculated with nuclear and cytosolic areas at a representative central slice of the cell (Extended Data Fig. 1). Thus, in FLIP experiments we measured area ratios from images, and converted this to volume ratios using the experimental correlation.

To solve for unknown variables, we used a curve fitting technique with a weighted least square method. The experimental data for concentrations (n, c) is fitted to a solution of the ODEs (n_f, c_f). The objective function f is then formulated as the sum of squares of residuals of model and experimental data as:

$$f = \sum_t w_n (n - n_f)^2 + w_c (c - c_f)^2$$

Where w_n and w_c are used to weigh the function by time and compartment concentration to avoid bias in the fitting:

$$w_n = \frac{1}{(t + \epsilon) \sum_t n} \quad w_c = \frac{1}{(t + \epsilon) \sum_t c}$$

Here, w_n, w_c, n, c , and n_f, c_f are all a function of time t and ϵ is an arbitrary scalar constant (set to 10) used simply to prevent the denominator of w_n and w_c from reaching zero. We use the `fminsearch` function of MATLAB to minimize f as a function of ODE parameters k_e and η (equations 1 and 2). For each iteration, n_f, c_f is calculated as a function of k_e and η using the Matlab `ode15s` solver. We note that resulting fitted rates showed more variability for conditions with fast rates (corresponding to small molecular weight constructs) than conditions with slow rates (see Fig. 2e,f). This is likely caused by a higher experimental error in measuring fast rates: in cells with faster rates, photobleaching occurs faster, and therefore the important part of the fluorescence intensity curves is compressed in a shorter interval (less frames). This makes the subsequent fitting more susceptible to noise.

Statistical and reproducibility

Statistical analysis was performed with GraphPad Prism 9.0.0. When testing data with a 2-way ANOVA, we transformed the data ($y = \log_{10}(y)$) which showed smaller residuals, and therefore better statistical power, when transformed.

All micrograph images shown in the figures are representative examples of results from 3 different experiments.

Data availability

Source data have been provided in Source Data. All other data supporting the findings of this study are available from the corresponding author on reasonable request

Code availability

All codes generated during the current study are available from the corresponding authors on reasonable request. The kinetic mathematical model of transport is available at https://github.com/ravehlab/npctransport_kinetic.

Methods-only references

72. Roca-Cusachs, P. *et al.* Integrin-dependent force transmission to the extracellular matrix by α -actinin triggers adhesion maturation. *Proc Natl Acad Sci U S A* **110**, E1361-70 (2013).
73. Liu, H. & Naismith, J. H. An efficient one-step site-directed deletion, insertion, single and multiple-site plasmid mutagenesis protocol. *BMC Biotechnol* **8**, 91 (2008).
74. Zhang, Q. *et al.* Nesprins: a novel family of spectrin-repeat-containing proteins that localize to the nuclear membrane in multiple tissues. (2001).
75. Kazgan, N., Williams, T., Forsberg, L. J. & Brenman, J. E. Identification of a Nuclear Export Signal in the Catalytic Subunit of AMP-activated Protein Kinase. *Molecular Biology of the Cell* **21**, 3433–3442 (2010).
76. Yang, J. *et al.* Twist, a master regulator of morphogenesis, plays an essential role in tumor metastasis. *Cell* **117**, 927–939 (2004).
77. Oria, R. *et al.* Force loading explains spatial sensing of ligands by cells. *Nature* **552**, 219–224 (2017).
78. Lakins, J. N., Chin, A. R. & Weaver, V. M. Exploring the link between human embryonic stem cell organization and fate using tension-calibrated extracellular matrix functionalized polyacrylamide gels. *Methods in Molecular Biology* **916**, 317–350 (2012).
79. Elosegui-Artola, A. *et al.* Rigidity sensing and adaptation through regulation of integrin types. *Nat Mater* **13**, 631–637 (2014).
80. Rapsomaniki, M. A. *et al.* EasyFRAP: An interactive, easy-to-use tool for qualitative and quantitative analysis of FRAP data. *Bioinformatics* **28**, 1800–1801 (2012).

Supplementary Note

Modelling of mechanosensitive nucleocytoplasmic transport

Initial conceptual model

To obtain a first understanding of how mechanical force should affect nucleocytoplasmic transport of constructs with NLS sequences, we developed a simple conceptual model. For this, we simply assumed that:

$$\frac{n}{c} = \frac{f_i}{f_e} = \frac{f_p + f_f}{f_p} \text{ if } \frac{n}{c} < \left(\frac{n}{c}\right)_{sat}$$
$$\frac{n}{c} = \left(\frac{n}{c}\right)_{sat} \text{ otherwise}$$

Where n/c is the nuclear to cytoplasmic concentration ratio of a given construct, f_i and f_e are the flow rates in and out of the nucleus respectively, f_p is a passive diffusive flow rate through NPCs which decreases with increasing MW (and is equal in the export and import direction), f_f is a facilitated diffusive flow rate which depends on the strength of the NLS sequence (and does not depend on MW) and $\left(\frac{n}{c}\right)_{sat}$ is a maximum value for n/c ratios, where saturation is reached. Such saturation would imply that any change in f_i is matched by an equivalent change in f_e , keeping the ratio constant. In this initial conceptual model, the underlying reason for this is not addressed. However, the detailed, kinetic model described below provides a justification for this, discussed in the text: as NLS affinities increase, cargo molecules can compete with Ran-GTP for binding importins, limiting the ability of Ran-GTP to disassemble the cargo-importin complex. This leads to the facilitated diffusion of importin-cargo complexes out of (and not only into) the nucleus. In this scenario, both influx and efflux are driven by facilitated diffusion, and respond in the same way.

Note that facilitated and passive diffusion are assumed to have additive contributions to total influx flow rates, and that for simplicity changes in nuclear/cytosolic volume compartments are not considered (unlike in the more detailed, kinetic model below). The effect of force applied to the nucleus is introduced by increasing f_p by two-fold at the lowest MW (arbitrarily set to have to have a value of $f_p=1$ in the absence of force) and by a progressively smaller amount as MW increases, until having a negligible effect at the highest MW (arbitrarily set to have a value of $f_p=0.015$ in the absence of force). Force also increases f_f by 2-fold, in this case independently of MW. After applying these effects of force, mechanosensitivity is calculated as:

$$mechanosensitivity = \frac{\left(\frac{n}{c}\right)_{stiff}}{\left(\frac{n}{c}\right)_{soft}}$$

Graphs in Fig. 4a,b were calculated by calculating n/c and mechanosensitivity for a range of values of f_p (1-0.015 before force application) and f_f (16-0.12 before force application). The choice of values is arbitrary, and merely intends to show the relative effects when either f_f or f_p dominate the overall n/c ratio. Accordingly, no specific numerical values are shown in the graphs.

Kinetic mathematical model of transport.

The kinetic model of nucleocytoplasmic transport (Model Figure 1, Model Tables 1-3) was constructed following a canonical description of the nucleocytoplasmic transport process¹⁻⁴. A system of ordinary differential equations (Model Table 1) is used to describe passive diffusion of unbound cargo molecules through NPCs; Ran-mediated facilitated diffusion of cargo:importin complexes through NPCs, and maintenance of the RanGTP gradient across the nuclear envelope through NTF2-mediated import of RanGDP^{5,6}, RanGAP-mediated hydrolysis of RanGTP to RanGDP in the cytoplasm⁷, and chromatin-bound RCC1 (RanGEF) mediated conversion of RanGDP to RanGTP in the nucleus⁸. During passive diffusion, unbound cargo molecules diffuse in either direction at a rate proportional to their concentrations, in accordance with Fick's law^{9,10}. During facilitated diffusion, cargo:importin complexes interact with docking sites on NPCs, diffuse across the nuclear envelope and release cargo by interacting with RanGTP. Docking rate to the NPC is proportional to the number of available docking sites. Cargo and importin molecules also associate and dissociate spontaneously in a non-Ran dependent manner. Of note, the model does not consider competition of cargo with other, endogenous cargo molecules already present in cells¹¹, due to the difficulty in estimating overall endogenous cargo concentrations or affinities. However, the main effect of this competition is to limit the availability of Ran, something which is already considered by modelling a finite Ran concentration.

Model parametrization: The kinetic model of transport provides a simplified minimal description of the transport process based on a set of canonical assumptions¹⁻⁴. It is not meant to reproduce precise empirical values, rather to characterize dependencies among key biophysical parameters that determine NPC transport kinetics on soft and stiff surfaces. Nonetheless, the model has been carefully parametrized to reproduce key features of transport, and it is remarkably robust to changes in its parameter values. Unless stated otherwise, all simulations were conducted using the mean measured nuclear and cytoplasmic volumes of 627 fL and 2194 fL in our dataset. Passive diffusion rates for different cargo molecules of different sizes were also obtained from measurements (Fig. 2e,f). The cargo concentration was estimated to be in the range 0.01-0.1 μM , based on comparison of GFP fluorescence values and reference fluorescence of purified GFP. This is much lower than the $\sim 10 \mu M$ physiological concentrations of importins such as Kap β ^{12,13}, and the estimated 5-20 μM concentration of RanGTP concentration in HeLa cells⁴, thus precise values of these parameters are expected to have limited effect. Indeed, doubling or halving Ran concentration had limited qualitative effect on our model results. The Ran cycle kinetic parameters were fitted to reproduce a robust nuclear:cytoplasmic RanGTP ratio of >500 ⁴, starting from a 1000:1 ratio. The number of dock sites per NPC was estimated from the thousands of FG binding sites per NPC and the large fraction of cargo and NTR molecules found in mass-spectrometry measurements in native NPCs¹⁴.

Simulation code. Our simulations were implemented in Python (version 3.6). They are fully reproducible; the source code and the run parameters can be found in https://github.com/ravehlab/npctransport_kinetic (run03 was used to produce model results in this manuscript).

Model Table 1. Ordinary differential equations (ODEs) of a kinetic model of transport. Subscripts N and C indicate nuclear and cytoplasmic localization. Subscript NPC indicates localization to the NPC, and subscripts NPC-C and NPC-N indicate sub-localization at the nuclear and cytoplasmic sides of the NPC, respectively. Bracketed variables are in units of concentration (for either the nucleus or the cytoplasm) and non-bracketed variables indicate actual numbers of molecules (for NPC-docked molecules) (Table S1). N_A is Avogadro's number.

ODEs	Processes described
$[\dot{C}_N] = -\pi_{passive}[C_C] \cdot \frac{V_C}{V_N}$ $[\dot{C}_C] = -\pi_{passive}[C_N] \cdot \frac{V_N}{V_C}$	Passive diffusion of unbound cargo through the NPC
$\dot{C}_{I_{NPC-N}} = \sigma_{on} \cdot (N_{dock} - C_{I_{NPC}}) \cdot [C_I_N]$ $- \sigma_{off} \cdot C_{I_{NPC-N}}$ $+ \varphi \cdot (C_{I_{NPC-C}} - C_{I_{NPC-N}})$ $- \alpha[GTP_N]C_{I_{NPC-N}}$ $\dot{C}_{I_{NPC-C}} = \sigma_{on} \cdot (N_{dock} - C_{I_{NPC}}) \cdot [C_I_C]$ $- \sigma_{off} \cdot C_{I_{NPC-C}}$ $+ \varphi \cdot (C_{I_{NPC-N}} - C_{I_{NPC-C}})$ $[\dot{C}_N] = [GTP_N] \cdot \left(\frac{\alpha C_{I_{NPC-N}}}{N_A \cdot V_N} + \beta[C_I_N] \right)$ $+ k_{off}[C_I_N]$ $[\dot{C}_I_N] = -\beta[GTP_N][C_I_N] - k_{off}[C_I_N]$ $- \sigma_{on} \cdot (N_{dock} - C_{I_{NPC}}) \cdot [C_I_N] / (N_A \cdot V_N)$ $+ \sigma_{off} \cdot C_{I_{NPC-N}} / (N_A \cdot V_N)$	Facilitated diffusion: - Docking and undocking of cargo:importin complexes to and from NPCs, resp. - NPC traversal of NPC-docked cargo:importin complexes between cytoplasmic and nuclear ends of the NPC - RanGTP-dependent and RanGTP-independent dissociation of cargo:importin complexes in the nucleus and NPC
$[\dot{C}_C] = k_{off}[C_I_C]$ $[\dot{C}_I_C] = -k_{off}[C_I_C]$ $- \sigma \cdot (N_{dock} - C_{I_{NPC}}) \cdot [C_I_C] / (N_A \cdot V_C)$ $+ \sigma_{off} \cdot C_{I_{NPC-C}} / (N_A \cdot V_C)$	Non-RanGTP dependent dissociation of cargo molecules from importin molecules in the cytoplasm
$[\dot{C}_I_N] = k_{on}[C_N]$ $[\dot{C}_I_C] = k_{on}[C_C]$ $[\dot{C}_N] = -k_{on}[C_N]$ $[\dot{C}_C] = -k_{on}[C_C]$	Association of cargo molecules to importin molecules. assuming $[I] \gg [C]$ (see Model parametrization)
$[\dot{GTP}_N] = \gamma[GDP_N] - (\delta + \epsilon)[GTP_N]$ $- [GTP_N] \cdot \left(\frac{\alpha C_{I_{NPC-N}}}{N_A \cdot V_N} + \beta[C_I_N] \right)$ $[\dot{GTP}_C] = \epsilon[GTP_N] \cdot \frac{V_N}{V_C} - \eta[GDP_C]$ $+ [GTP_N] \cdot \left(\frac{\alpha C_{I_{NPC-N}}}{N_A \cdot V_C} + \beta[C_I_N] \cdot \frac{V_N}{V_C} \right)$ $[\dot{GDP}_N] = \delta[GTP_N] + \zeta[GDP_C] \cdot \frac{V_C}{V_N}$ $[\dot{GDP}_C] = \eta[GTP_C] - \zeta[GDP_N] \cdot \frac{V_N}{V_C}$ $[\dot{GDP}_C] = -\zeta[GDP_N] \cdot \frac{V_N}{V_C}$	Ran cycle: - RCC1 (RanGEF) mediated exchange of RanGDP to RanGTP - RanGAP-mediated hydrolysis of RanGTP to RanGDP - Residual reverse conversion of nuclear RanGTP to RanGDP - NTF2-mediated transport of RanGDP (symmetric for export and import, results in net import due to concentration gradient) - export of importin-bound RanGTP following an import cycle (the exported importins are not modeled explicitly)

Model Table 2. Kinetic model variables.

Variable name	Description
C	cargo molecules (unbound)
CI	cargo:importin complex (bound)
GTP	RanGTP
GDP	RanGDP

Model Table 3. ODE model coefficients.

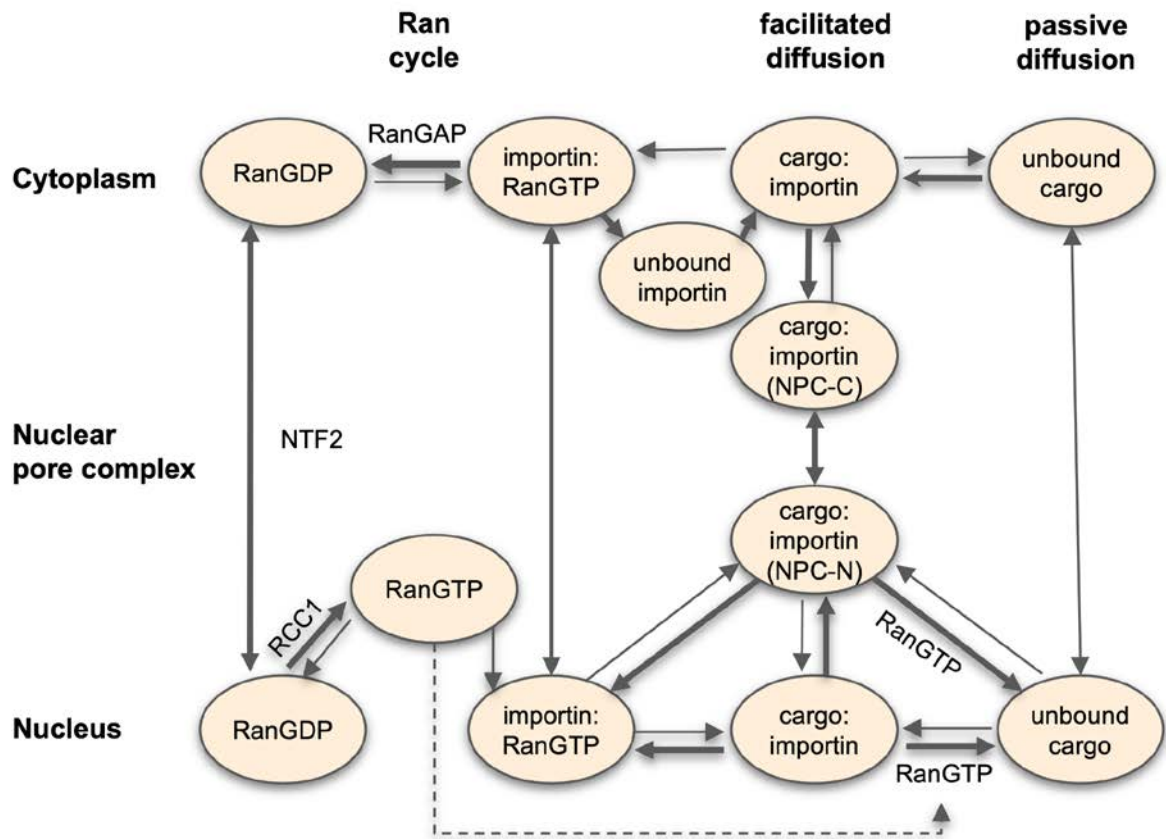
Model coefficient	Description	Value*	units
α	Rate of GTP-dependent conversion of NPC-docked cargo:importin complex to nuclear cargo	10^6	$M^{-1}sec^{-1}$
β	Rate of GTP-dependent conversion of nuclear cargo:importin complex to nuclear cargo	10^6	$M^{-1}sec^{-1}$
γ	Rate of exchange of GDP_N to GTP_N by RCC1	1000	sec^{-1}
δ	Rate of residual exchange of GTP_N to GDP_N by RCC1	0.2	sec^{-1}
ϵ	Rate of RanGTP passive export	0.5	sec^{-1}
ζ	Rate of NTF2-mediated RanGDP transport	1.0	sec^{-1}
η	Rate of RanGAP-mediated hydrolysis of RanGTP to RanGDP	500.0	sec^{-1}
k_{on}	Rate of cargo association to importin molecules	0.001-3.83**	sec^{-1}
k_{off}	Rate of dissociation of cargo:importin complexes	0.05	sec^{-1}
$\pi_{passive}$	Passive diffusion rate (permeability)	0.03-0.16***	sec^{-1}
σ_{on}	Rate of docking of cargo:importin complexes to NPC	50×10^6	$sec^{-1}M^{-1}$
σ_{off}	Rate of undocking of cargo:importin complexes from NPC	3000.0	sec^{-1}
φ	Traversal rate of cargo:importin complexes across the NPC	15.0 (soft) 150.0 (stiff)	sec^{-1}
N_{dock}	Number of docking sites on NPCs	500	-
N_{NPC}	Number of NPC molecules per cell	2000	-
$[Ran]_{cell}$	Total concentration of RanGTP and RanGDP in the entire cell	20	μM
$[C]_{cyto,t=0}$	Initial cytoplasmic concentration of cargo molecules****	0.1	μM
V_N	Nuclear volumen	627×10^{-15}	L
V_C	Cytoplasmic volume	2194×10^{-15}	L
Δt	Simulation timestep	0.001	sec
τ	Simulation time	100	sec

* unless stated otherwise for specific runs

** 0.054 sec^{-1} for weak NLS, 0.205 sec^{-1} for medium NLS

*** according to measurements of actual passive diffusion rates for different cargo molecules (Fig. 2e,f)

**** the initial nuclear concentration is zero in all runs



Model Figure 1. Kinetic model of import through the NPC. The concentration of importin molecules is not modeled explicitly (see Text), except to indicate whether cargo molecules are in the bound or unbound state, but they are shown here for completeness.

References

1. Kim, S. & Elbaum, M. A Simple Kinetic Model with Explicit Predictions for Nuclear Transport. *Biophysical Journal* **105**, 565–569 (2013).
2. Cautain, B., Hill, R., De Pedro, N. & Link, W. Components and regulation of nuclear transport processes. *FEBS Journal* vol. 282 445–462 (2015).
3. Jovanovic-Talisman, T. & Zilman, A. Protein Transport by the Nuclear Pore Complex: Simple Biophysics of a Complex Biomachine. *Biophysical Journal* vol. 113 6–14 (2017).
4. Görlich, D., Seewald, M. J. & Ribbeck, K. Characterization of Ran-driven cargo transport and the RanGTPase system by kinetic measurements and computer simulation. *The EMBO Journal* **22**, 1088–1100 (2003).
5. A, S., A, B. & IG, M. Nuclear import of Ran is mediated by the transport factor NTF2. *Current biology : CB* **8**, 1403–1406 (1998).
6. Ribbeck, K., Lipowsky, G., Kent, H. M., Stewart, M. & Görlich, D. NTF2 mediates nuclear import of Ran. *The EMBO Journal* **17**, 6587–6598 (1998).
7. Bischoff, F. R., Klebe, C., Kretschmer, J., Wittinghofer, A. & Ponstingl, H. RanGAP1 induces GTPase activity of nuclear Ras-related Ran. *Proc Natl Acad Sci U S A* **91**, 2587–2591 (1994).

8. L, R., J, K., A, H. & A, W. Structural basis for guanine nucleotide exchange on Ran by the regulator of chromosome condensation (RCC1). *Cell* **105**, 245–255 (2001).
9. Timney, B. L. *et al.* Simple rules for passive diffusion through the nuclear pore complex. *Journal of Cell Biology* **215**, 57–76 (2016).
10. Ribbeck, K. & Görlich, D. Kinetic analysis of translocation through nuclear pore complexes. *The EMBO Journal* **20**, 1320 (2001).
11. Kopito, R. B. & Elbaum, M. Nucleocytoplasmic transport: A thermodynamic mechanism. <http://dx.doi.org/10.2976/1.3080807> **3**, 130–141 (2010).
12. Kapinos, L. E., Huang, B., Rencurel, C. & Lim, R. Y. H. Karyopherins regulate nuclear pore complex barrier and transport function. *Journal of Cell Biology* **216**, 3609–3624 (2017).
13. Paradise, A., Levin, M. K., Korza, G. & Carson, J. H. Significant Proportions of Nuclear Transport Proteins with Reduced Intracellular Mobilities Resolved by Fluorescence Correlation Spectroscopy. *Journal of Molecular Biology* **365**, 50–65 (2007).
14. Kim, S. J. *et al.* Integrative structure and functional anatomy of a nuclear pore complex. *Nature* **2018 555:7697** **555**, 475–482 (2018).