

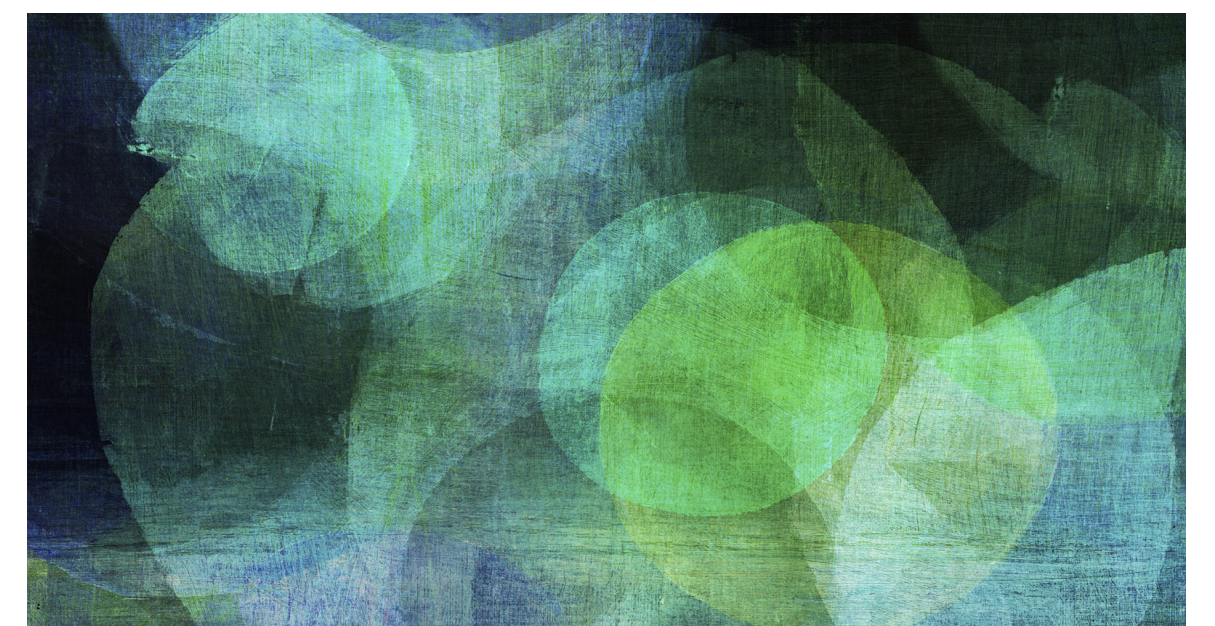
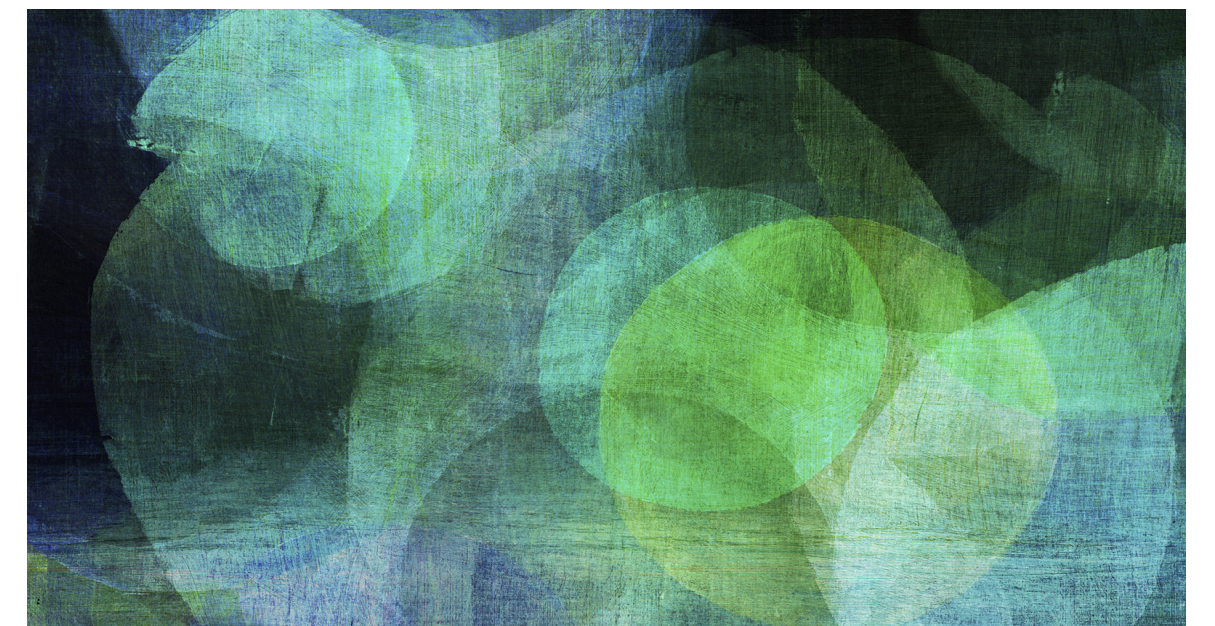
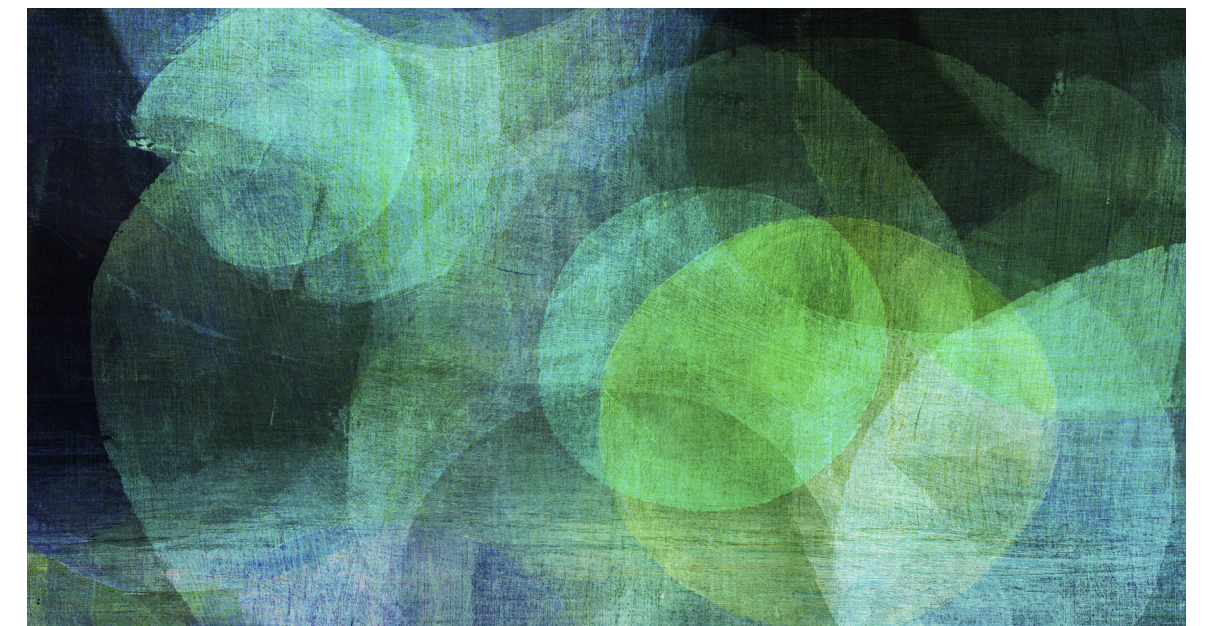
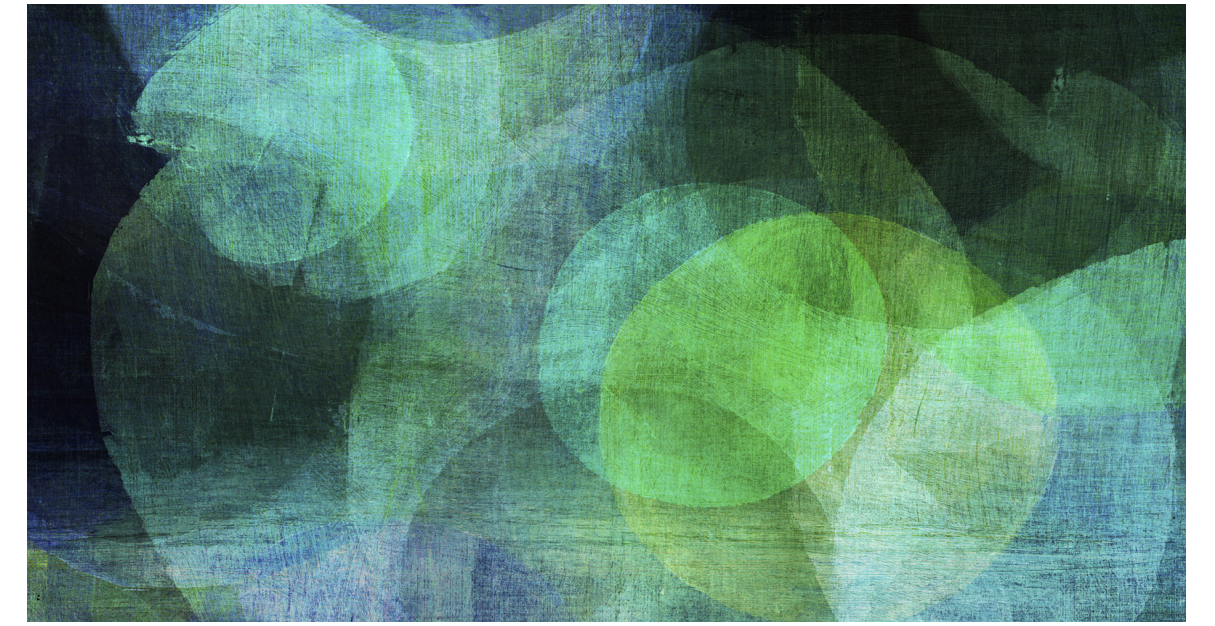
TUTORIA ENTRE IGUALS



Arantza Almenta
Curs 2021-2022
Grup 3B

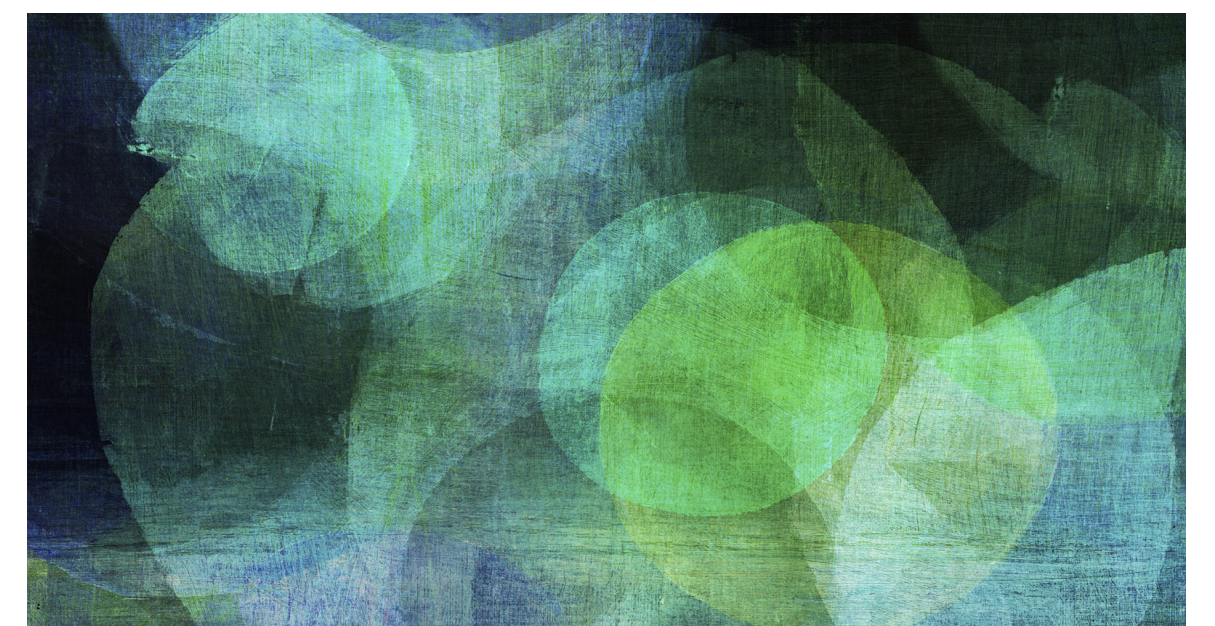
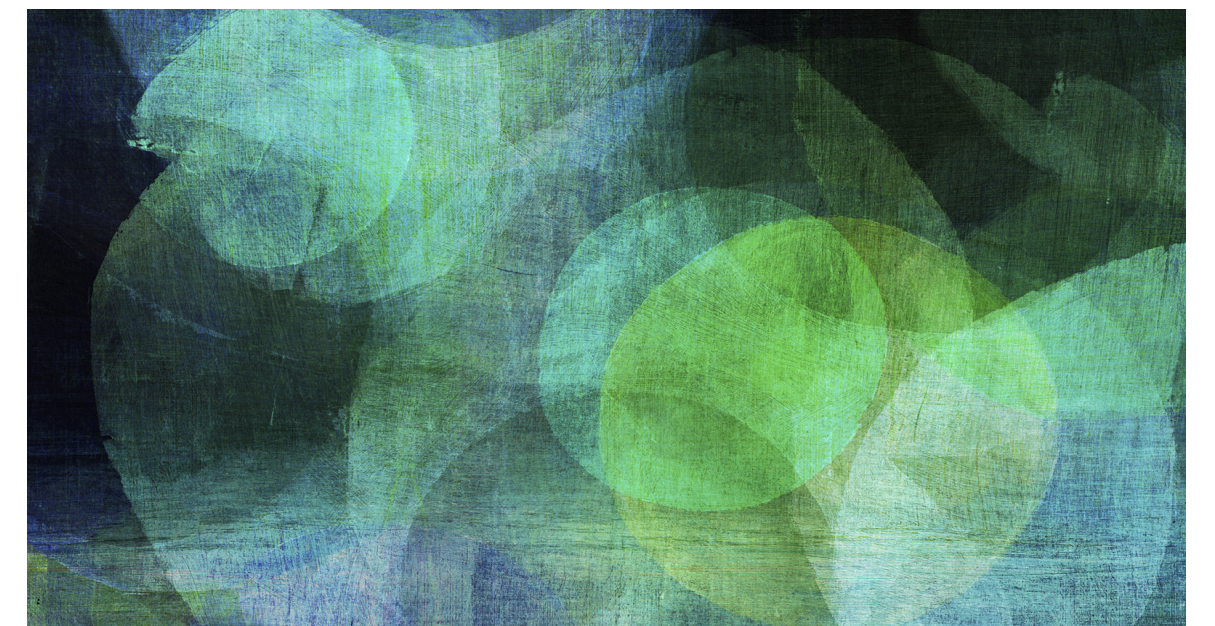
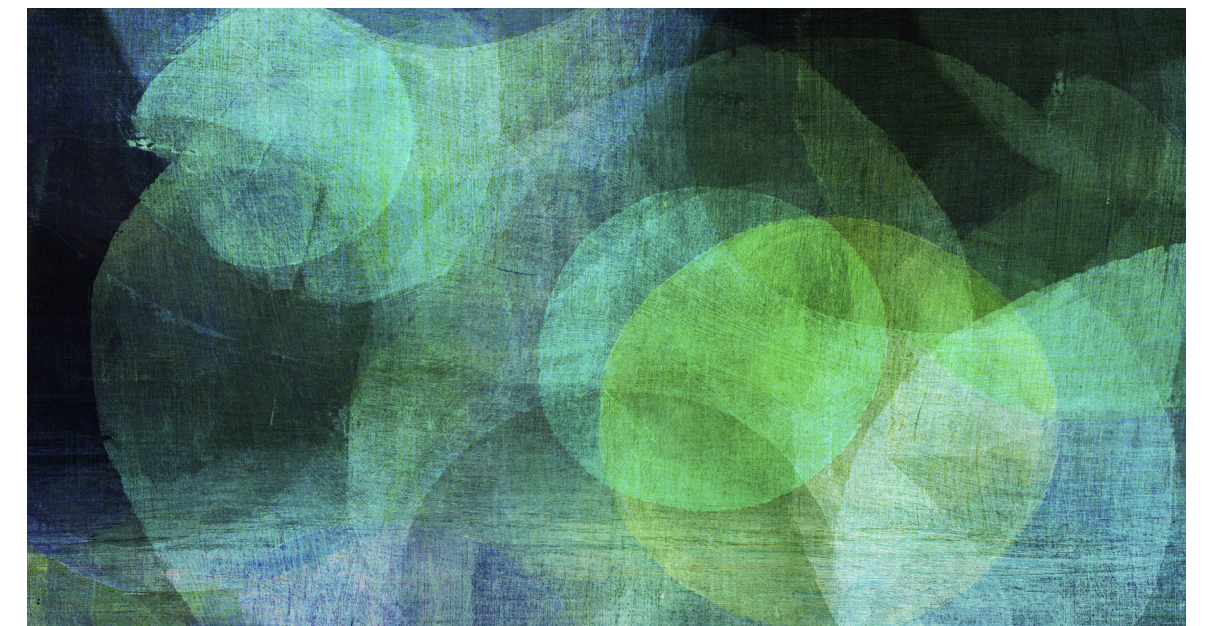
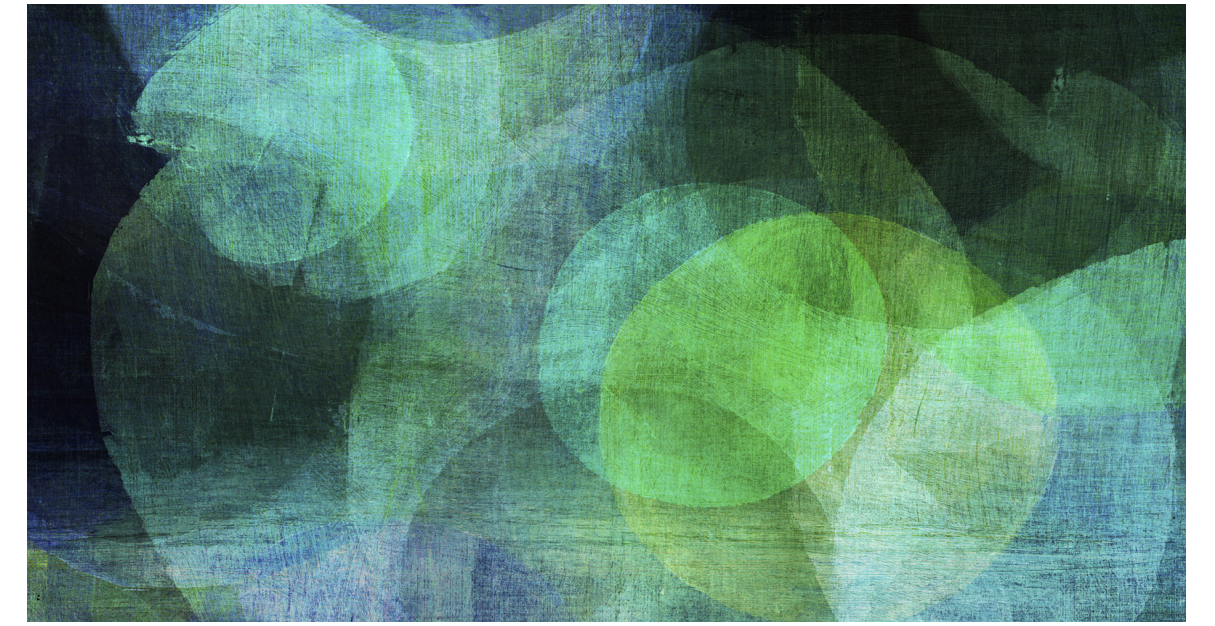
QUÈ VOL DIR TUTOR?

Tutor del llatí *tutor*,
deriva del verb *tueri*,
vol dir observar,
vigilar, protegir.



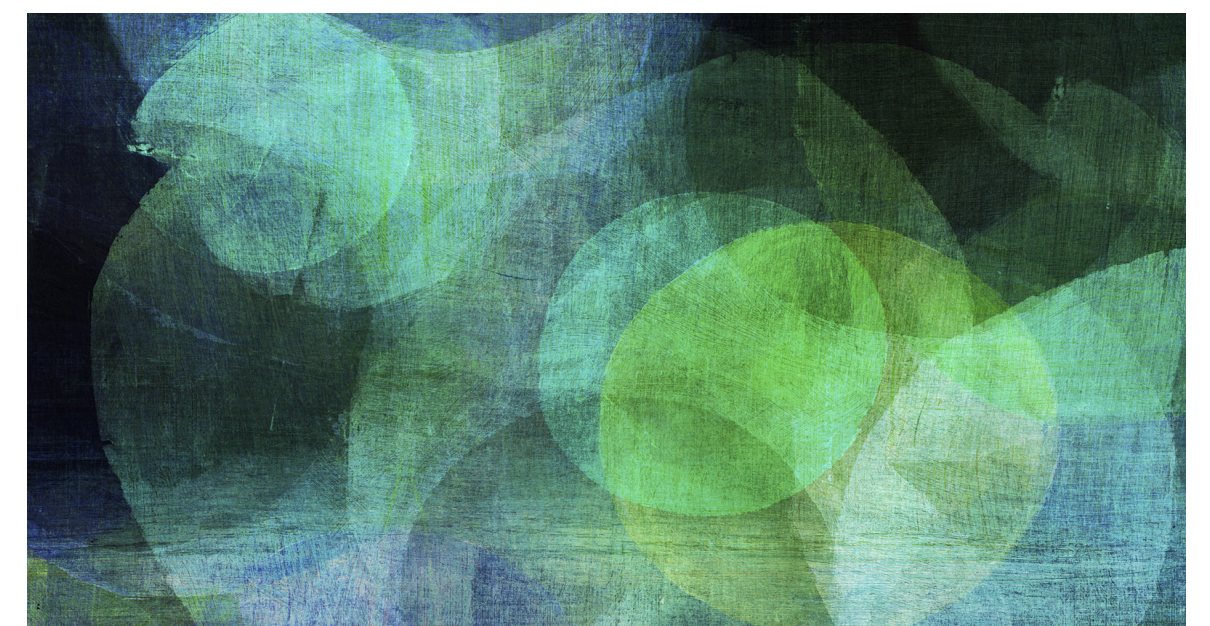
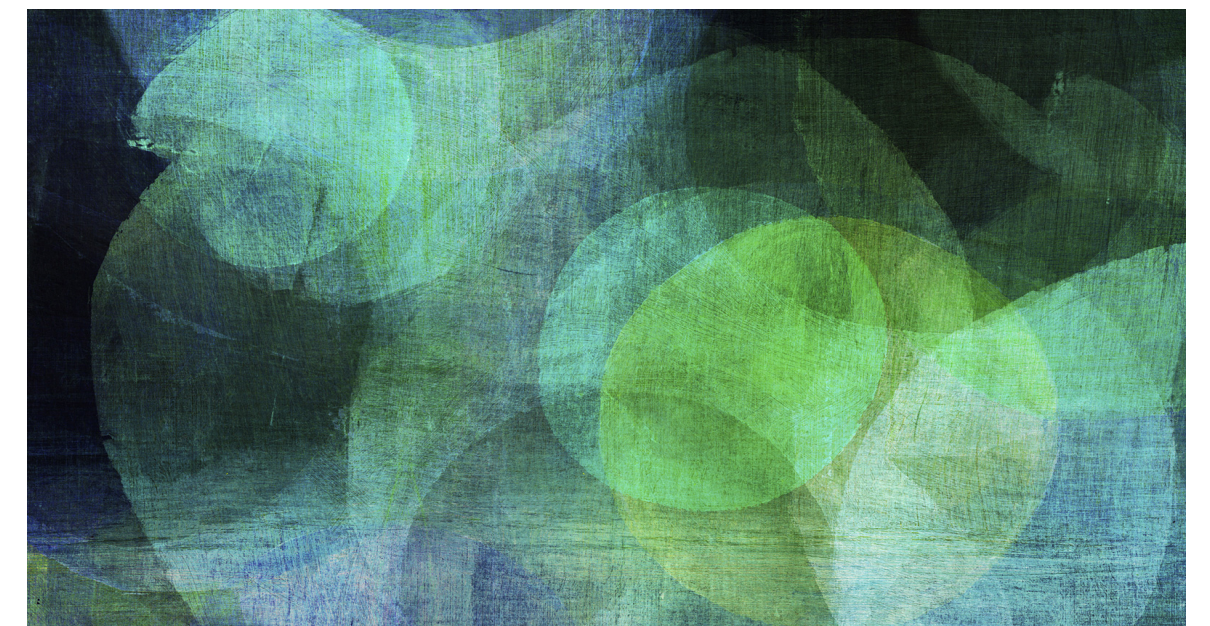
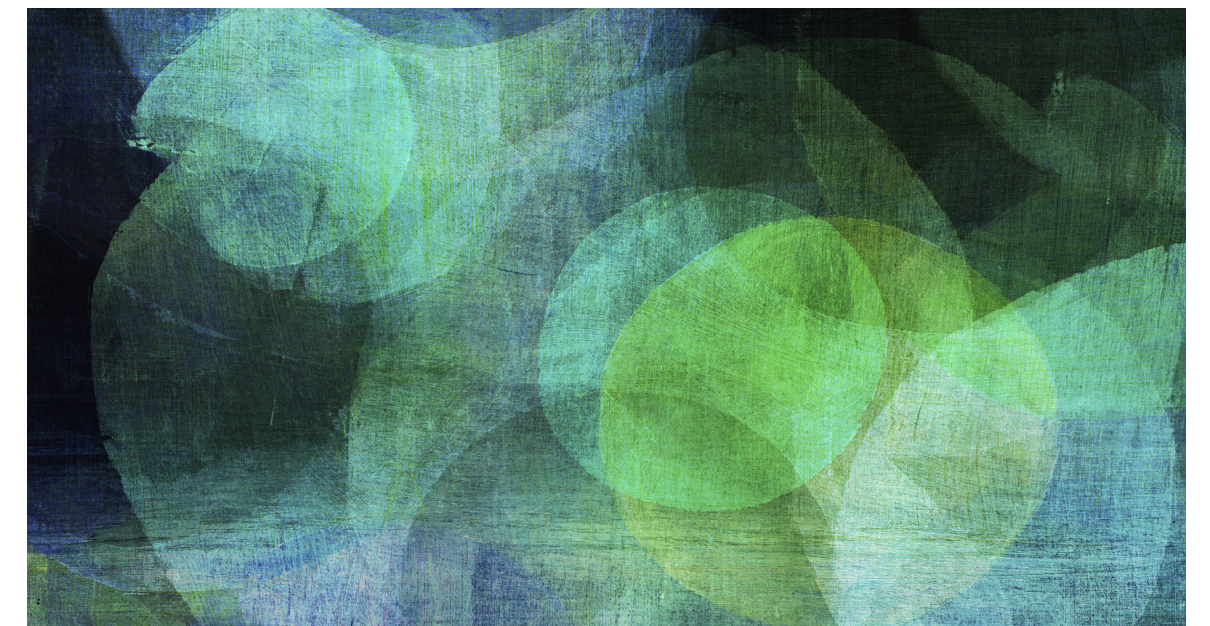
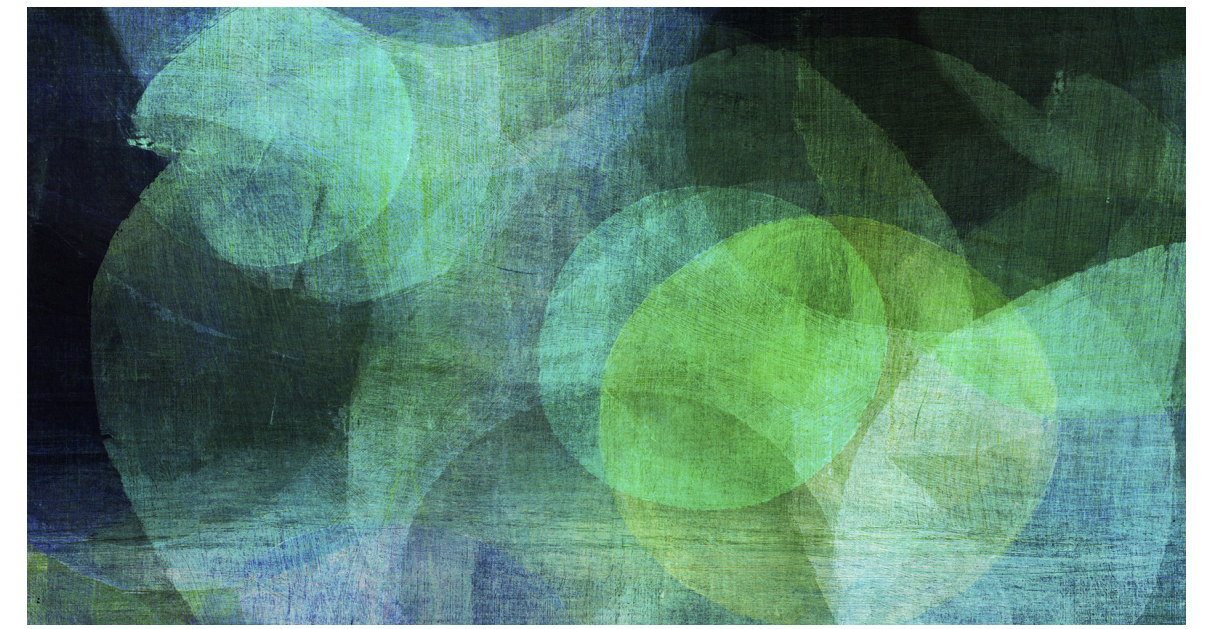
QUÈ ÉS UN TUTOR?

Persona que exerceix
una funció orientadora
en un àmbit o àmbits
concrets de la vida
d'algú.

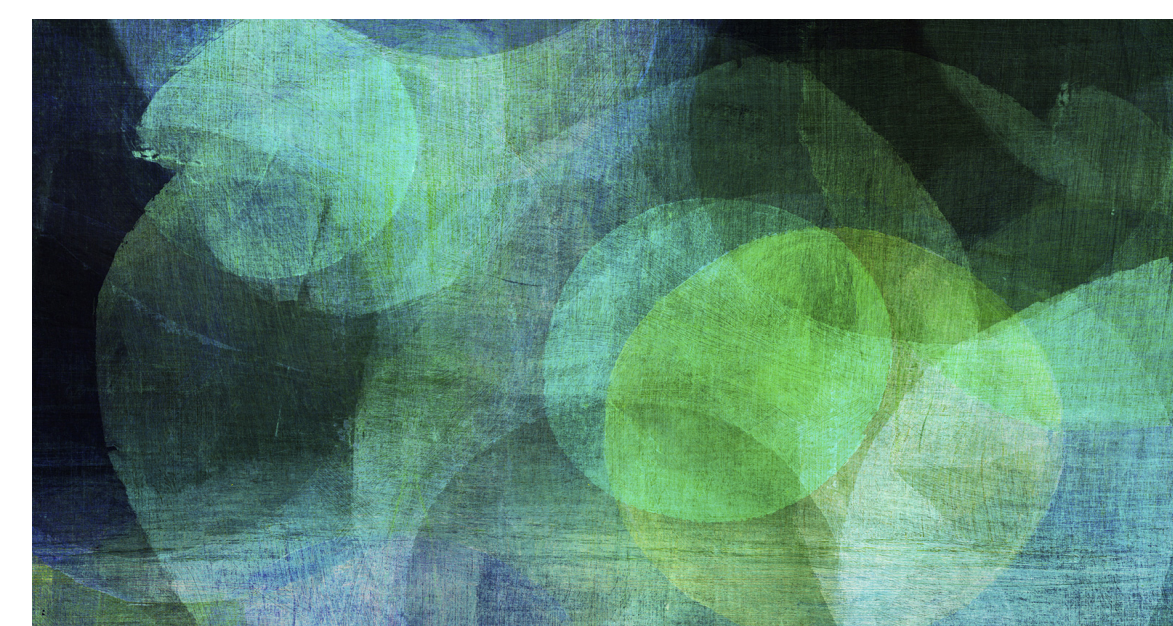
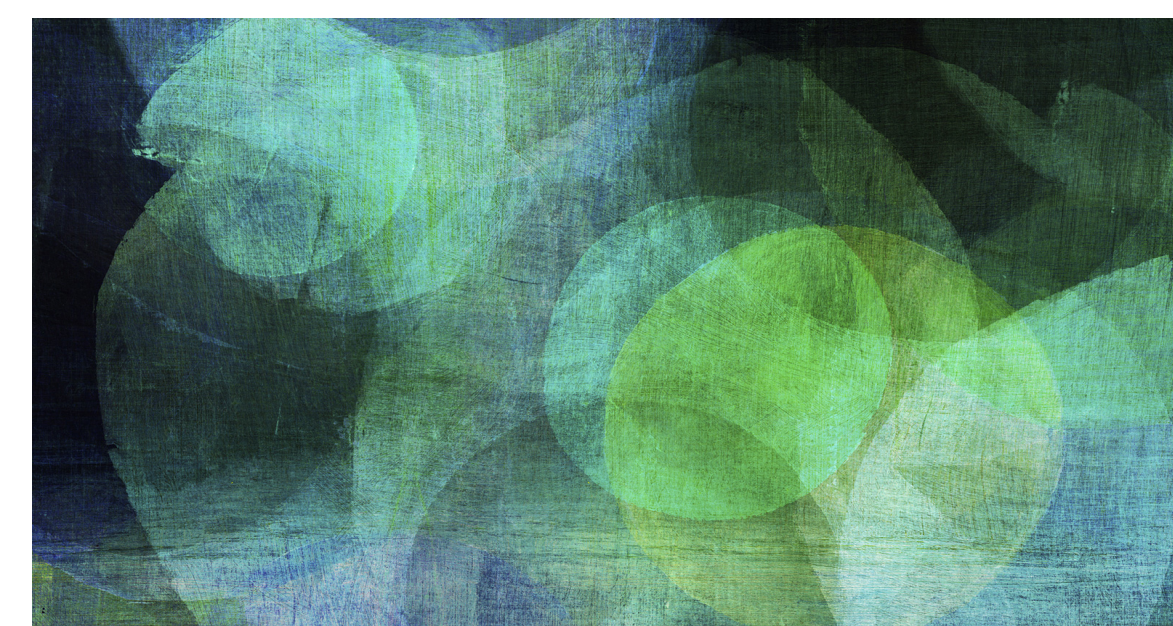
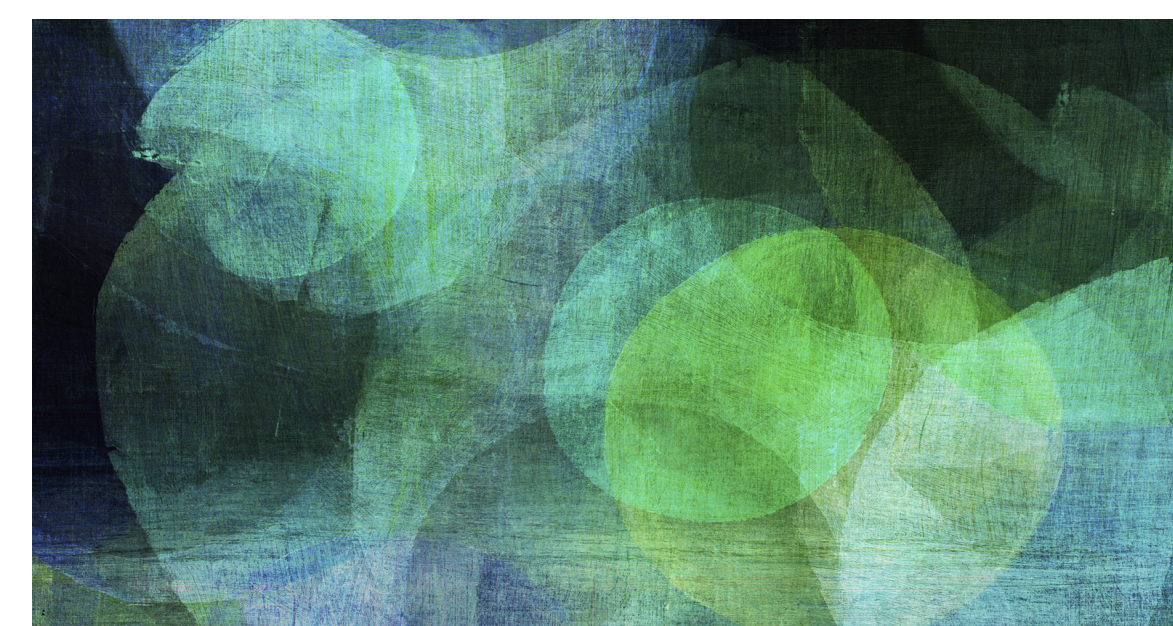
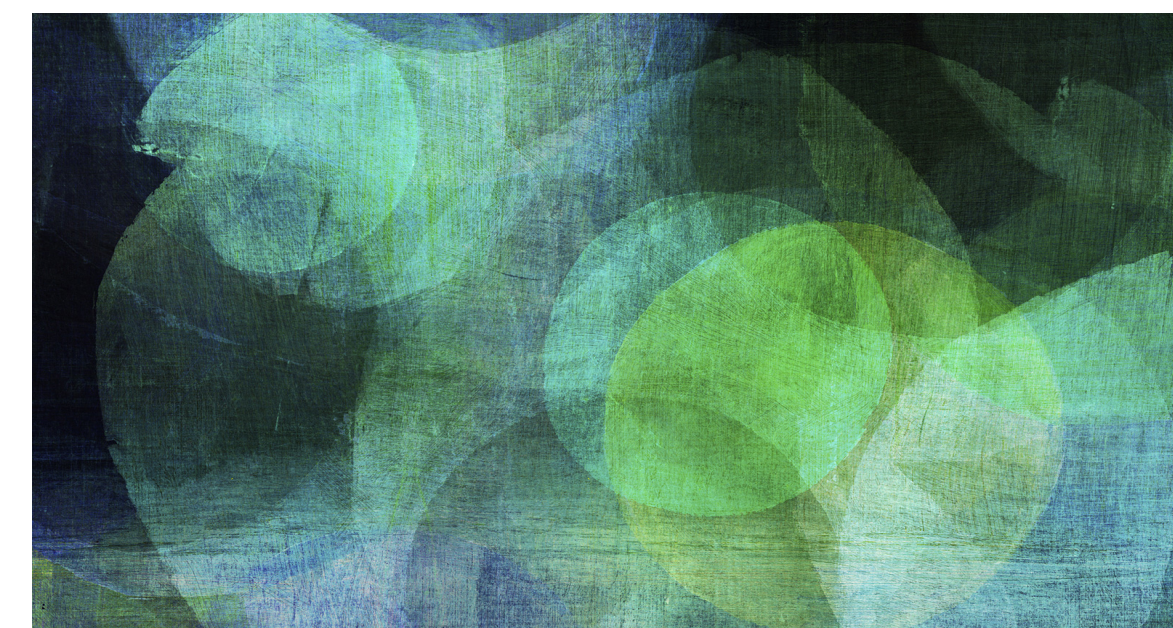


QUÈ VOL DIR TUTORTIZAR ENTRE IGUALS?

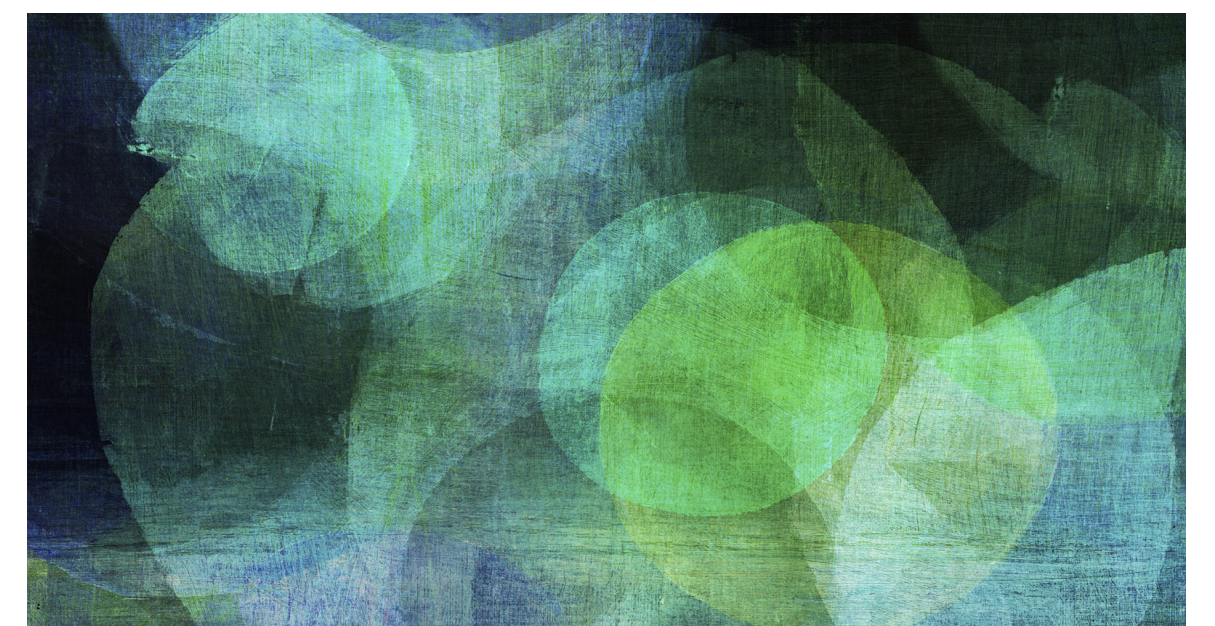
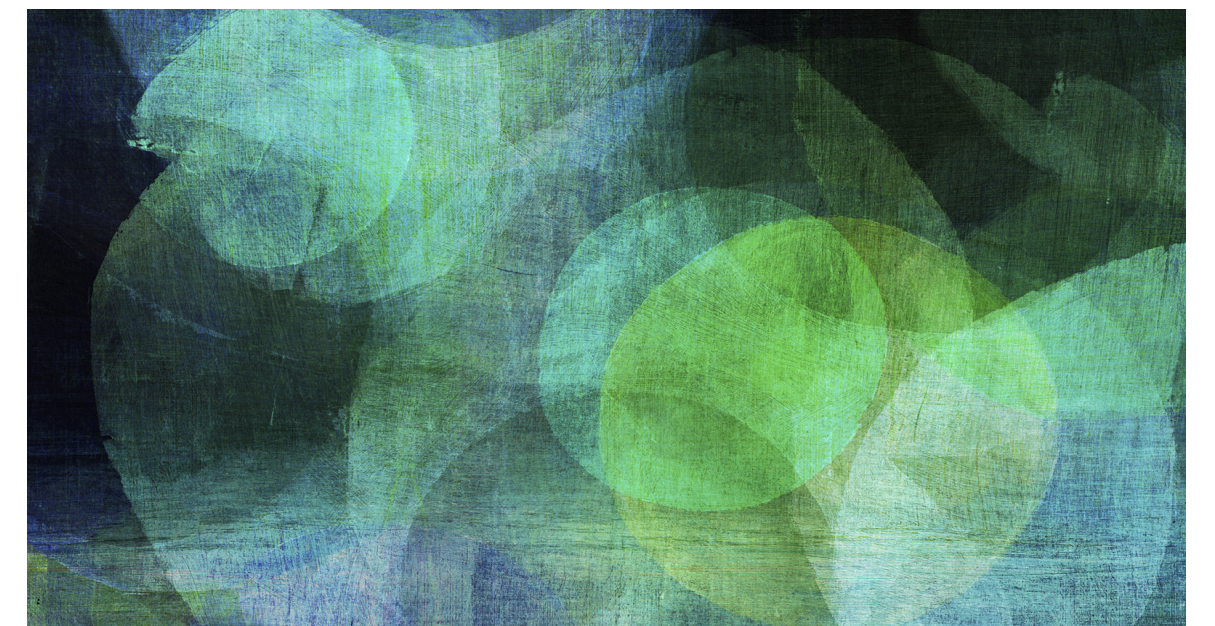
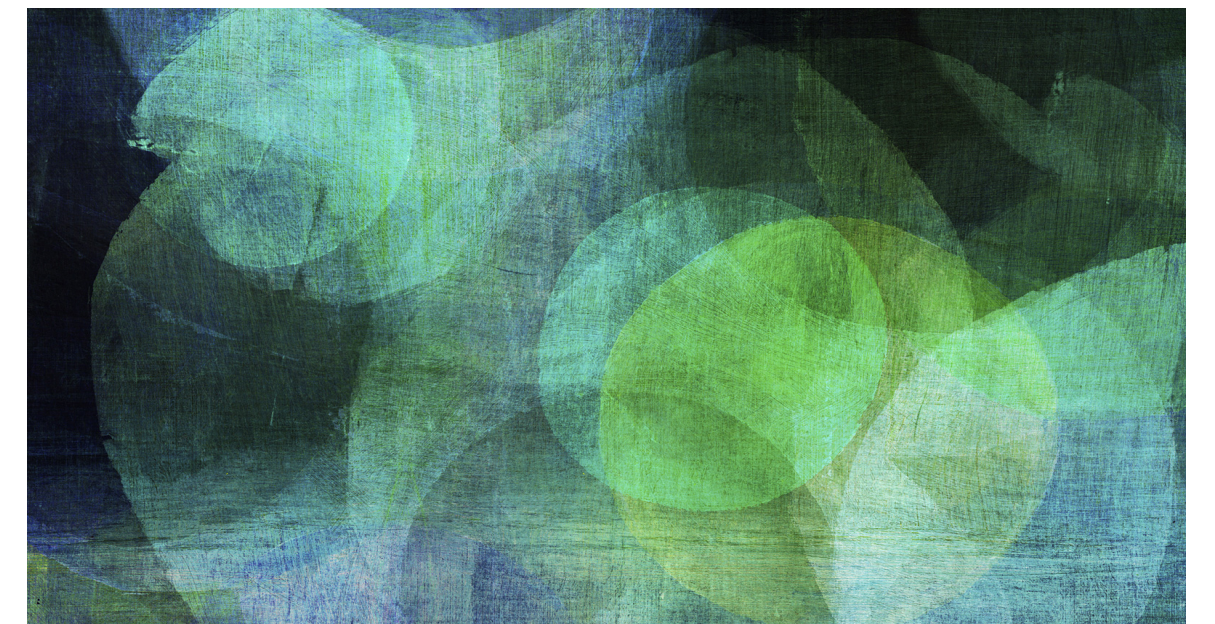
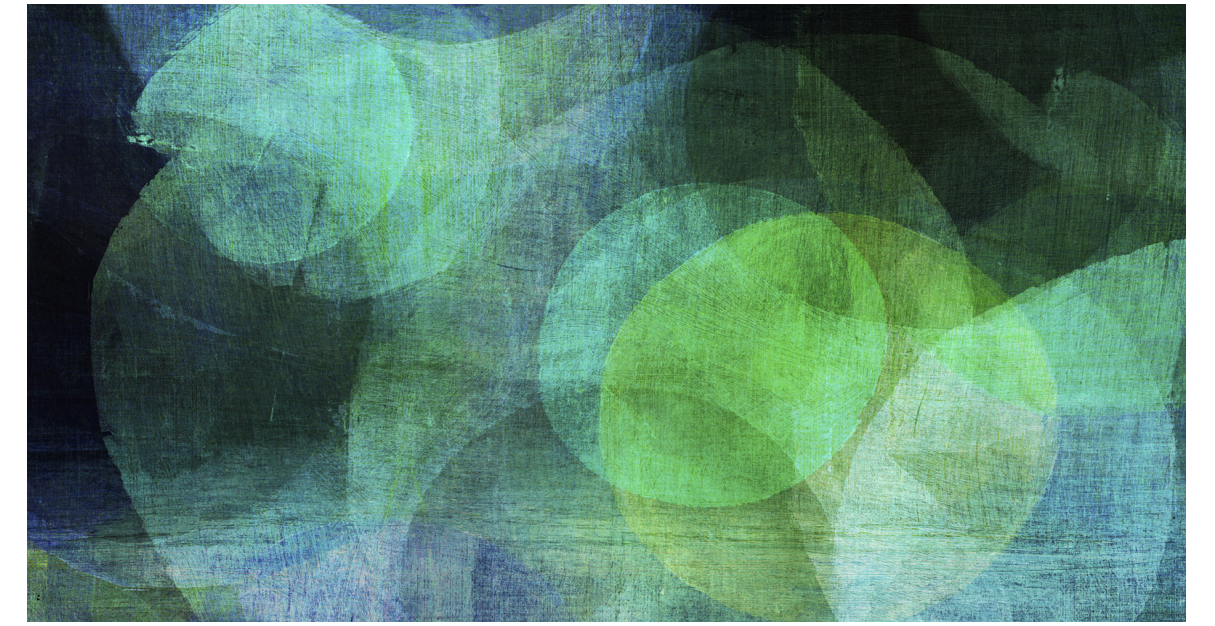
1. Permetre, donar
espai al coneixement
propri del grup.



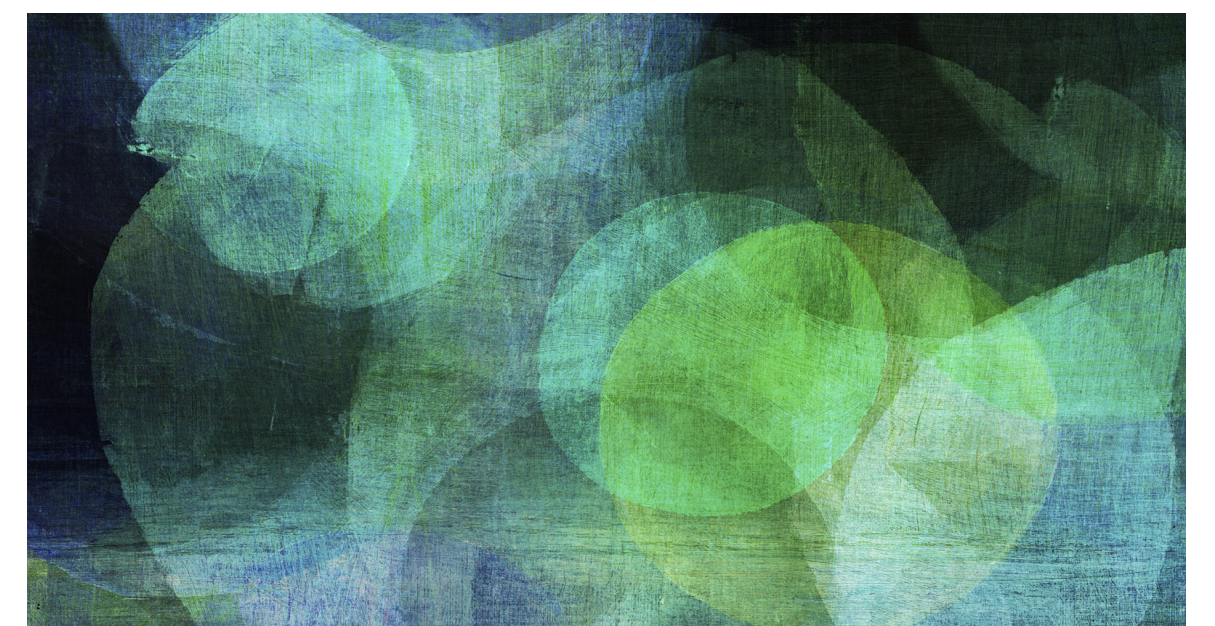
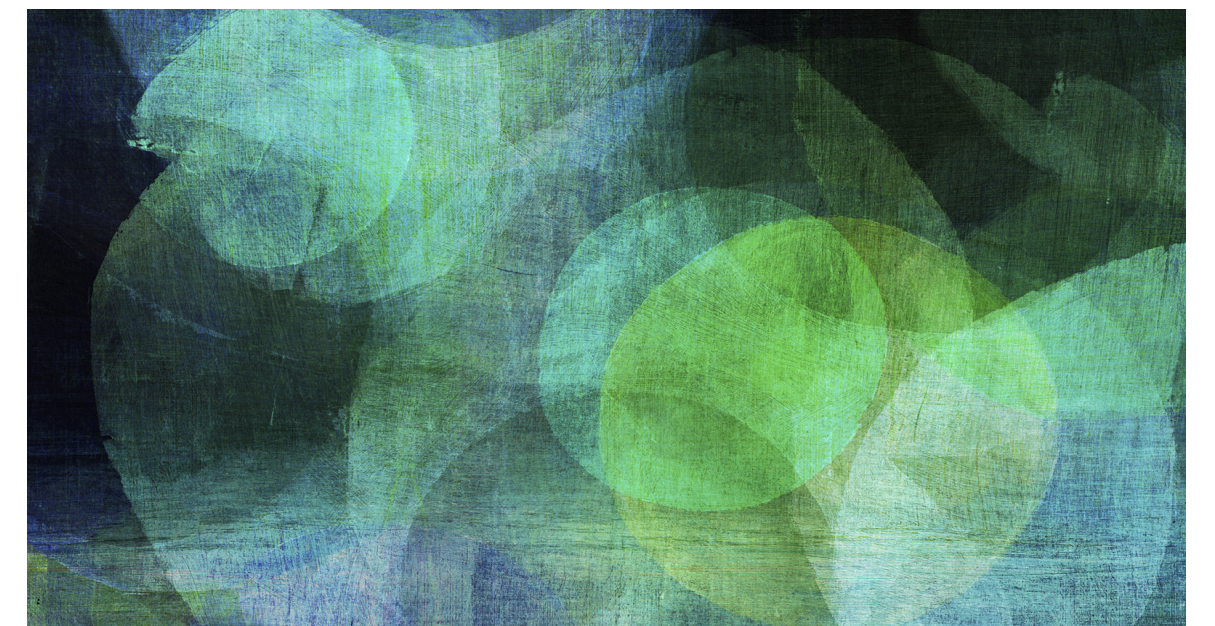
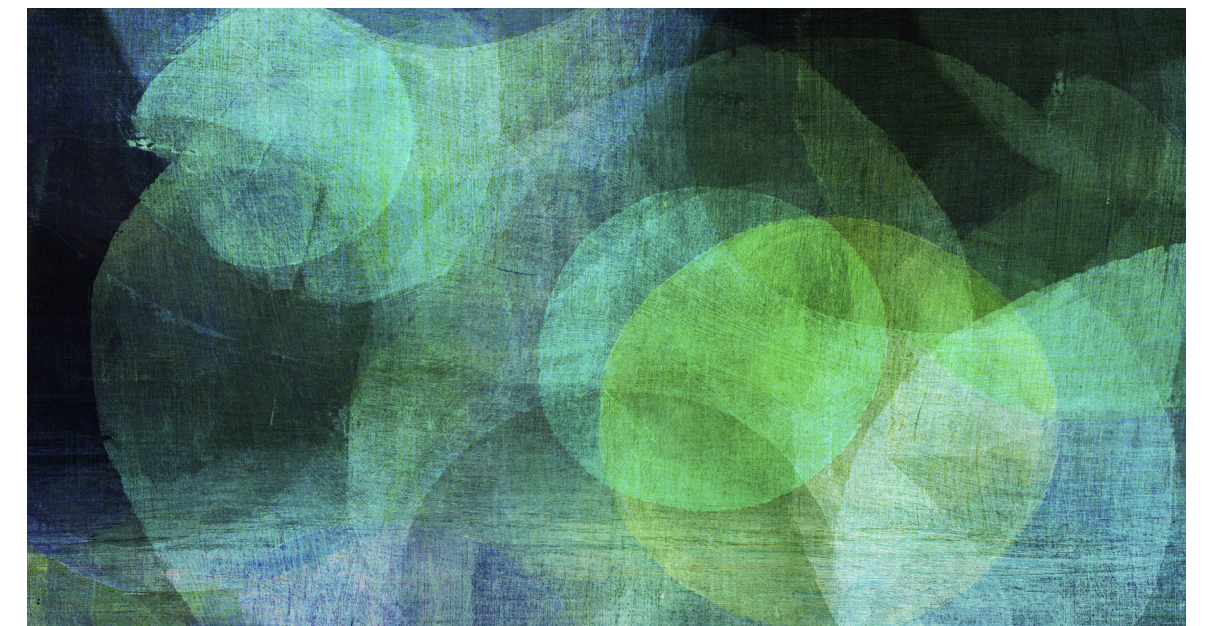
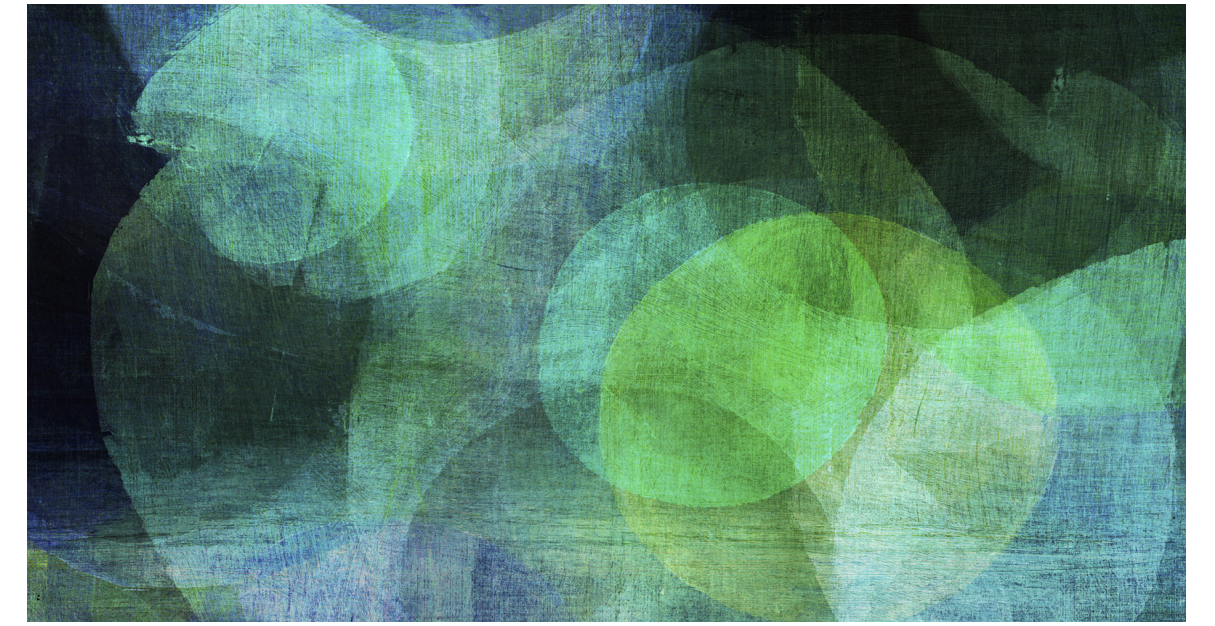
2. Reconèixer que el grup té habilitats pròpies que pot explotar en benefici individual i grupal.



3. L'adult NO
sempre és font de
guia.



4. Hi ha doble
aprenentatge.



ACTIVITAT A L'AULA