



UNIVERSITAT DE
BARCELONA

CRAI

Centre de Recursos per a
l'Aprenentatge i la Investigació

University of Barcelona CRAI Library



CRAI stand for...

Centre de **R**ecursos per a l'**A**prenentatge i la **I**nvestigació

Learning and Research
Resources Centre





So... What is a CRAI?

It's a space where you can access all of the University's services and resources for learning and research support.

The CRAI easy access to information and new technologies in a more dynamic and user-friendly environment adapted to each of its users' needs.

Image: Mundet Campus CRAI Library



The beginnings

The CRAI was created at the start of 2004 to adapt the UB's libraries to the requirements of the European Higher Education Area (EHEA) and the European Research Area (ERA), in which a new framework for university teaching – based on learning, research, development and innovation – is gradually taking shape.

Image: Clínic Campus CRAI Library





**The University of
Barcelona offers
users**

**General services
Teaching and innovation support
Research support**



**These services are
offered through**

Libraries (16)

- two of them heritage libraries

Technical Units (7)



The CRAI is a
member of

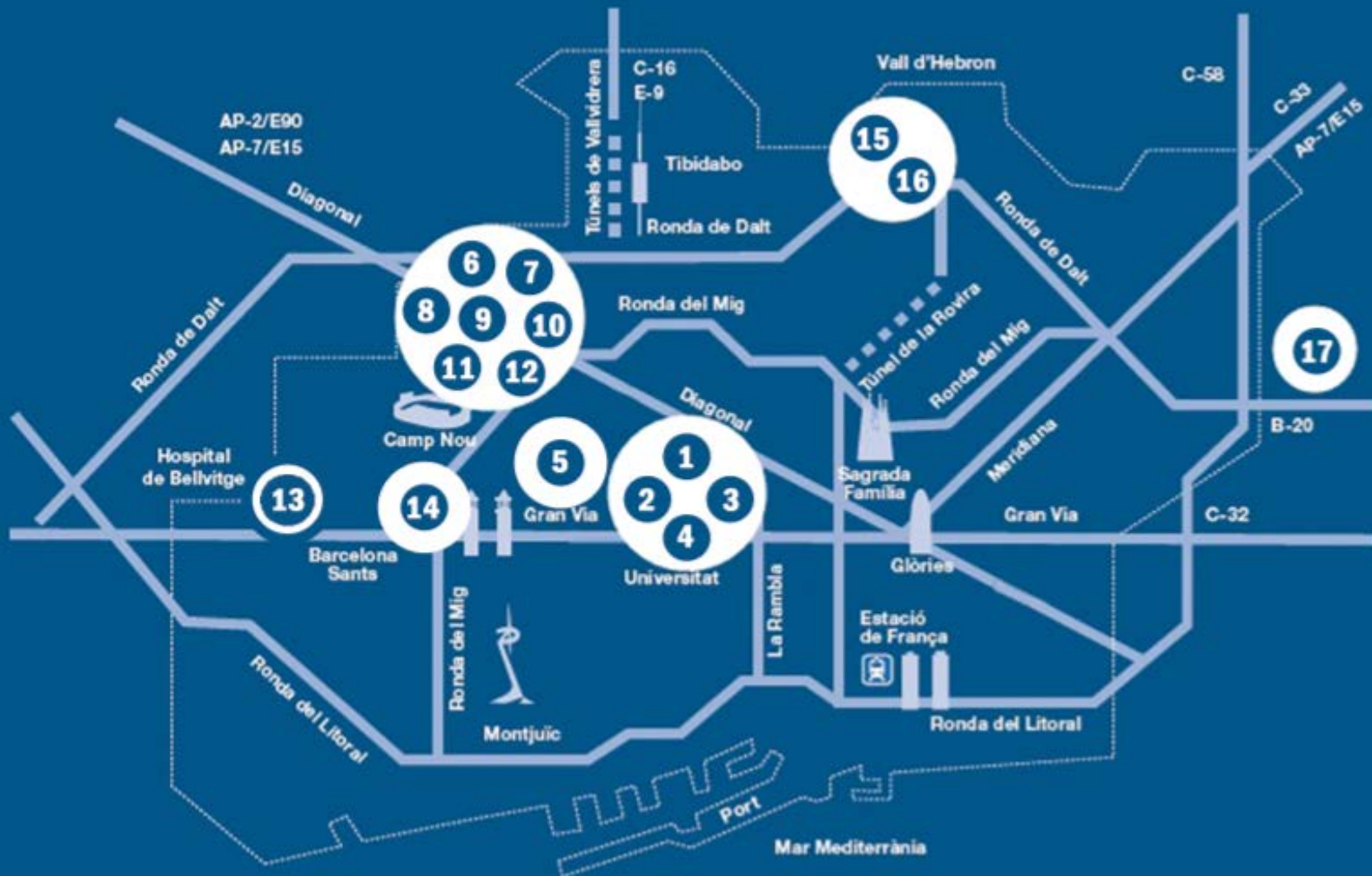
- the Consortium of University Services of Catalonia (CSUC)
- the Network of Spanish University Libraries (REBIUN)



Universidades
Españolas

Red de Bibliotecas
REBIUN

CRAI branch libraries





Heritage



Libraries



Rare Book and Manuscript CRAI Library





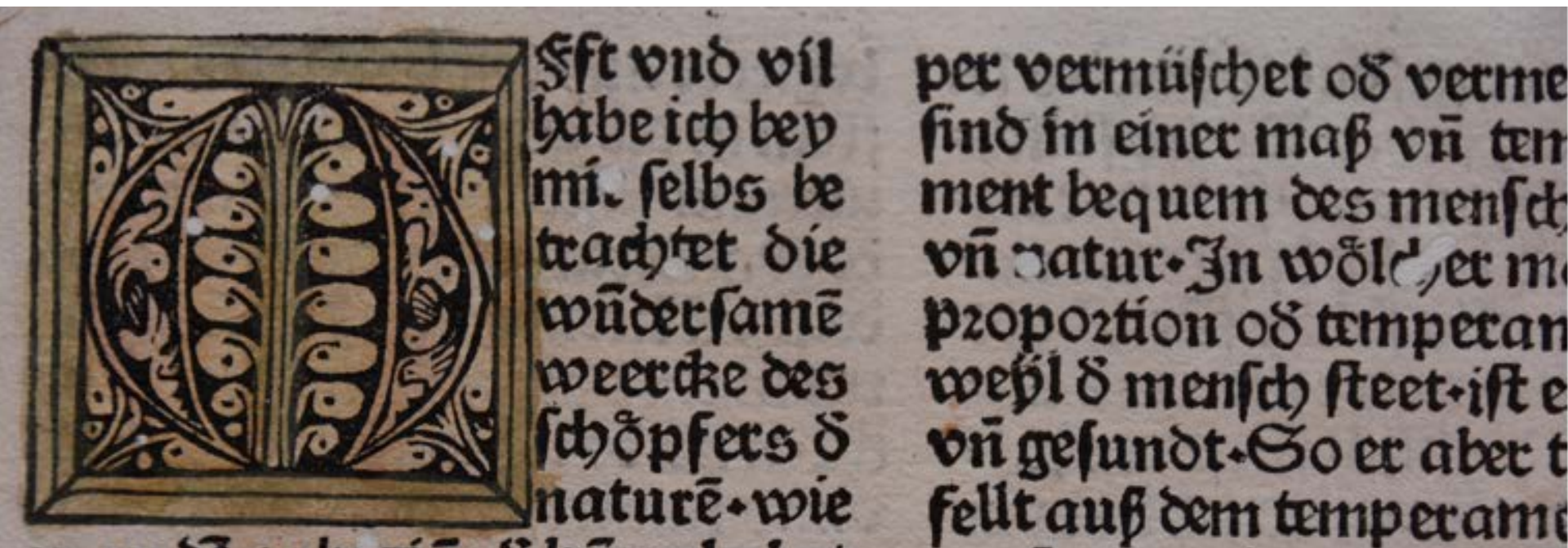
Rare Book and Manuscript CRAI Library

The importance of this library derives from the size and quality of the collection it houses. Following the passing of ecclesiastical confiscation laws in 1835, Barcelona's library collections from convents, which possessed numerous important manuscripts, incunabula and prints dating from 1501 to 1820, were brought together at the University to create a major public library.



Rare Book and Manuscript CRAI Library

- 2,150 manuscripts
- 1,240 incunabula
- 120,000 printed works (16th century to 1820)
- 8,158 engravings
- 890 parchments





The Pavelló de la República CRAI Library



It is considered one of the leading archive libraries in the world on the Second Spanish Republic, the Spanish Civil War and exile, the Franco regime and Spain's transition to democracy.



The Pavelló de la República CRAI Library

It also has an important collection on Sovietism and the international political history of the twentieth century, particularly the Second World War





Branch | Libraries

14 libraries

serving individual campus sites or faculties

Image: Pharmacy and Food Science CRAI Library





Figures

University of Barcelona

Image: UB Historic Building





16 faculties
9 affiliated centres
... and more than 662,000 sq m

Structure

Image: UB Historic Building





73 bachelor'degrees
153 master's degrees
48 doctoral programmes
235 postgraduate programs

Studies





more than €370m

Budget





+ €88m generated

R+D+I





- +5,900 teaching and research staff
- +2,200 administrative and service staff
- +6,300 alumni
- +42,000 undergraduate students
- +10,000 postgraduate students
- +38,000 UB-specific degree students

Collectives





- +11,000 international students
- 131 nationalities
- +1,700 international students at the UB on exchange programmes
- +1,300 UB students abroad on exchange programmes
- +3,400 agreements with universities and other foreign institutions

student mobility





- +5,700 scientific journals
- +1,100 doctoral theses read
 - +300 consolidated research groups
- +1,000 active research projects

More significant figures





Figures | CRAI



Figures

CRAI Staff

239

staff members

93

interns

Figures

Budget

annual investment in information resources
about €5m

Image: Philology CRAI Library



Figures | Facilities

37,000 sq m of facilities

+6,500 study desks

+2,300 connection points

72 study rooms for 500 users

16 computer labs for +300 users

Image: Biology CRAI Library



Figures

Services

+12,000

ILL requests

+1.9m

e-journal article downloads

+340,000

e-book downloads

5.3m

catalogue searches (Cercabib)

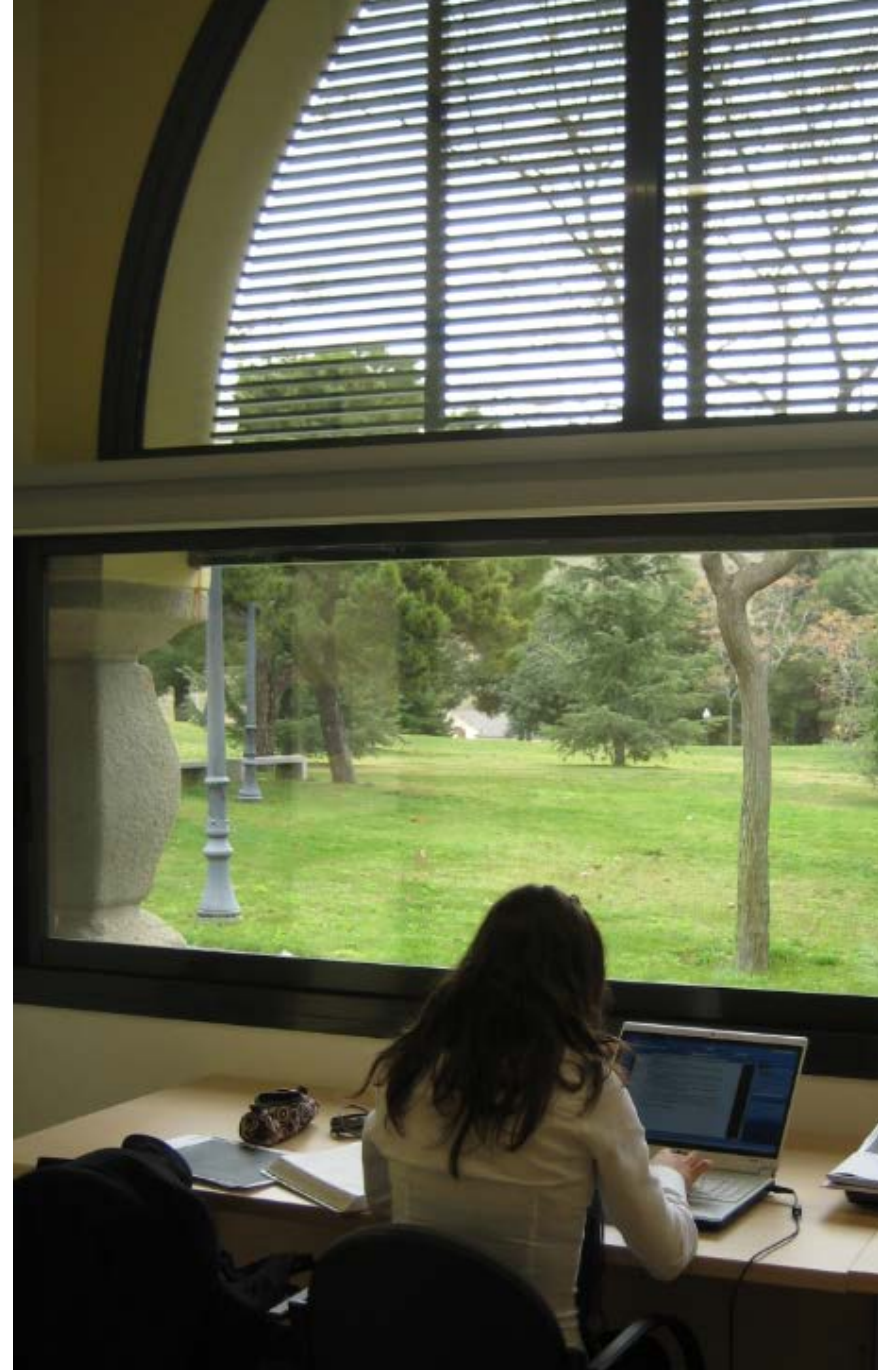


Image: Pharmacy and Food Sciences CRAI Library

Figures

Services

+11,000

training course attendances

+ 5,500

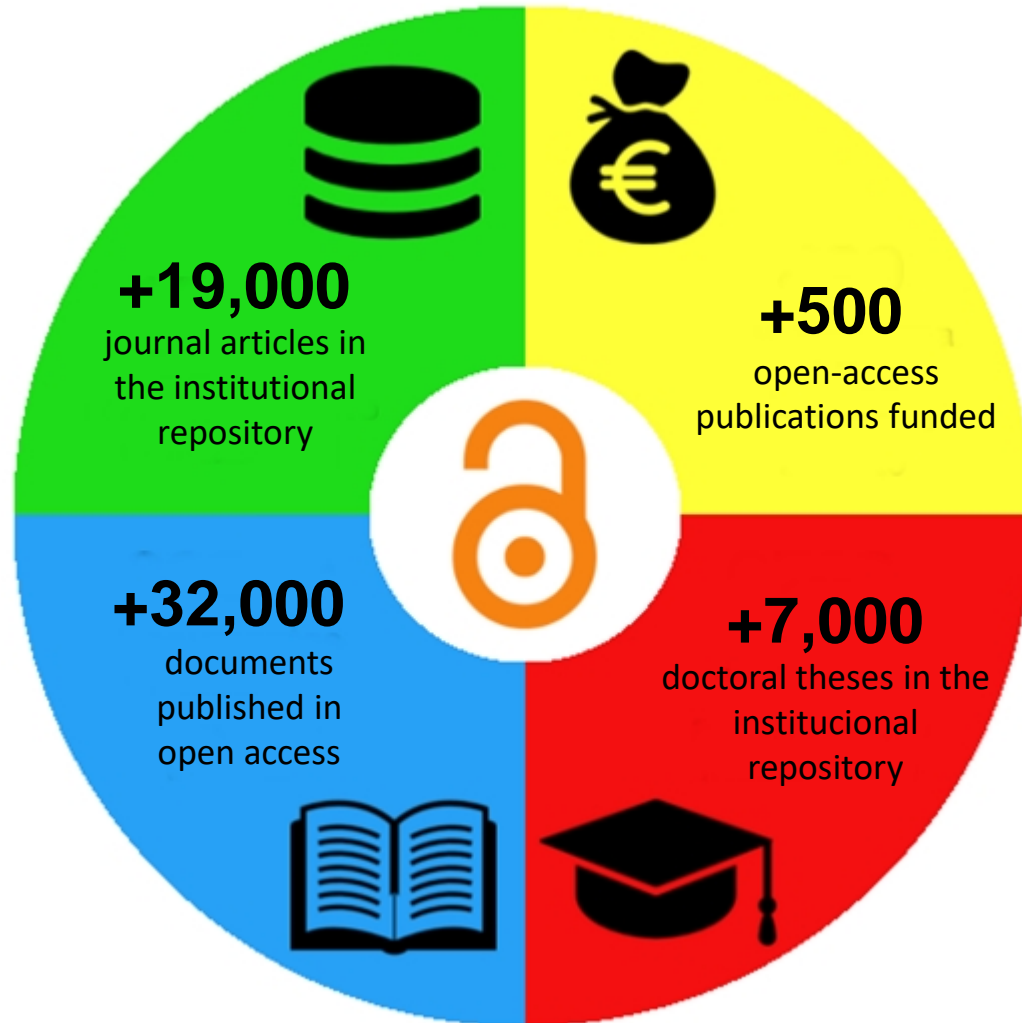
queries answered by the
User Support Service



Image: Philology CRAI Library

Figures

Open science





But



What do we do?



We are **drivers of open access and open science and disseminators of scientific knowledge generated at the UB**



Dipòsit de la Recerca
de Catalunya

PRC

Portal de la Recerca
de Catalunya



Revistes Catalanes
amb Accés Obert

RCUB

Revistes científiques
de la Universitat de Barcelona



we are | partners



Ligue des Bibliothèques
Européennes de Recherche
Association of European
Research Libraries



crue

Universidades
Españolas

Red de Bibliotecas
REBIUN



Consorti de
Serveis Universitaris
de Catalunya



we are | digital





we are | social



Tweets	Seguendo	Seguidores	Me gusta	Listas
11,8 mil	626	2.550	1.579	2

CRAI UniBarcelona

@crai_ub

Centre de Recursos per a l'Aprenentatge i la Investigació de la Universitat de Barcelona | University of Barcelona's Learning and Research Resources Centre

Barcelona

crai.ub.edu

Se unió en octubre de 2013

Tweets Tweets y respuestas Multimedia

CRAI UniBarcelona retwitteó



CRAI Campus Clínic @CRAIBibMed · 28 sept.

Finalitzem la setmana amb una imatge d'un dels visitants 'especials' que sovint visiten el nostre edifici 🦋 Recordeu que el cap de setmana trobareu oberts alguns CRAI Biblioteques del @crai_ub: crai.ub.edu/coneix-el-crai... Nosaltres us esperem dilluns a les 8.30 hores.





we are | advisors



ORCID

Connecting Research
and Researchers





we offer

information resources

- +80,000 e-books**
- +27,000 e-journals**
- +230 databases**
- +1.5M books**
- +40,000 journals**
- +50,000 items in repositories**

Image: Philosophy, Geography and History CRAI Library



we are | custodians

Digitization Centre



Restoration Workshop



The Herbarium



we are content creators



Dipòsit Digital de la Universitat de Barcelona / Recerca

Centre de Recursos per a l'Aprenentatge i la Investigació (CRAI-UB) Pàgina principal de la Comunidad

Envíos recientes [RSS 1.0](#) [RSS 2.0](#) [RSS](#)

Dels convents a l'acadèmia: els orígens de la biblioteca de la Universitat de Barcelona [Ver](#)

Listar

Fecha Publicación	Autor	Título	Materia
-------------------	-------	--------	---------

Colecciones en esta Comunidad

[Articles publicats en revistes \(CRAI-UB\)](#)

[Comunicacions a congressos / Presentacions \(CRAI-UB\)](#)

[Documents de treball / Informes \(CRAI-UB\)](#)

[Documents en revisió \(CRAI-UB\)](#)





we are

groundbreakers



ESPAI DEL
TÀCTIC



we are | supportive

#RECICLACULTURA WWW.RECICLACULTURA.ORG



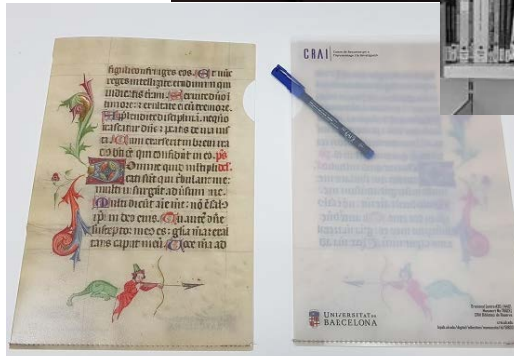
AQUEST SANT JORDI
2015
EL TEU LLIBRE POT CANVIAR VIDES
#RECICLACULTURA

COL-LABORA AMB LA INCLUSIÓ • DE PERSONES EN RISC • D'EXCLUSIÓ SOCIAL





we are marketing





we are | a team



V JORNADA
DE BONES
PRÀCTIQUES

Aula Capella Edifici Històric
20 de juny de 2018
de 9.30 a 13.30 h

INNOVA
CRAI



we guarantee | quality

The CRAI's policies, general strategy and quality structures are outlined in its strategic plan, which defines our **mission, vision and values**. It also describes the **process management system** employed across CRAI facilities and sets out a **regulatory framework** for general operations and CRAI services.

Image: Mathematics and Computer Science CRAI Library





...and we strive for **excellence**

We were the first Catalan university library structure to obtain **EFQM 500+ European Seal of Excellence**

We pursue **processes, strategic lines and areas of improvement**

We are finalizing a new **strategic plan for 2019–2022**



Road to excellence





2011

The CRAI carried out an EFQM self-assessment and did not reach 300 points, leading to improvements in internal management and the introduction of a management-by-processes approach.

2011-16

The management-by-processes approach was developed with the collaboration of the UB's Organization and Quality Service.

2016

The CRAI obtained the EFQM 400+ European Seal of Excellence.

2018

The CRAI obtained the EFQM 500+ European Seal of Excellence.





Put simply, **#WeAreCRAI**



Thanks!

